

ON 9AM 0219

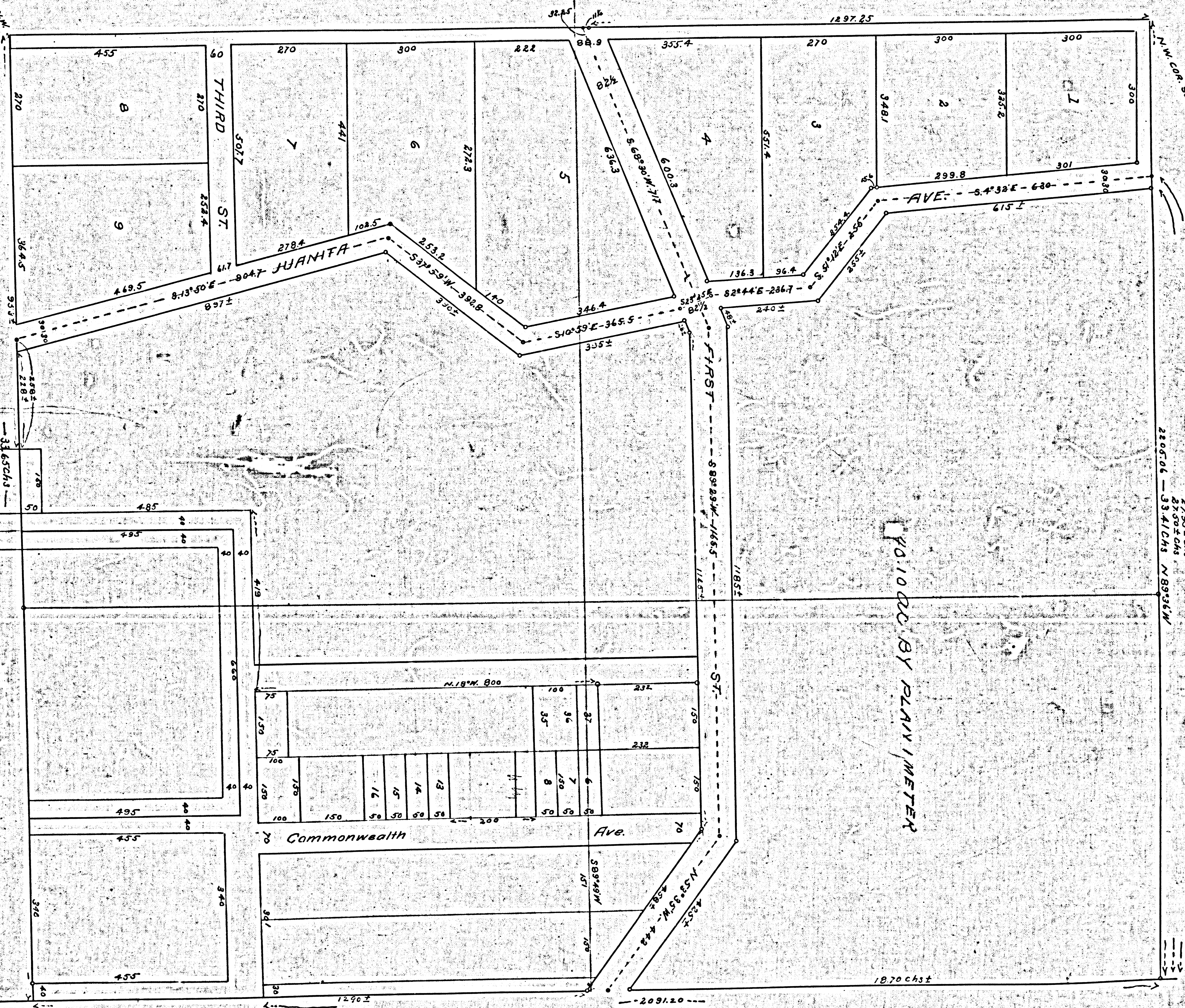
FILED MAP NO. 11026

PORTION OF NW 1/4 OF SEC. 19 T. 15 S. R. 13 W.
COPIED FROM T. 1 & T. CO'S. MAP G-147

SCALE 200' = 1"

SH. 5

For conditions, read to L.A. City for street purpose D. 31-08 O.R. 74-270
For plan of location of Sec. 19, T. 15 S. R. 13 W., see O.R. 1561-153 D. 35-44.
For NW 1/4 for Beverly Blvd. D. 40-138 O.R. 432-119
Por. of NW 1/4 for Council Street - D. 65-165, O.R. 7136-38, C.F. 1348.



F.M. 17056

ON 9AM 0219

FILED MAP NO. 11026