

MAP

showing proposed widening of VERNON AVENUE

from the East City Boundary to the West City Boundary

in the City of Los Angeles

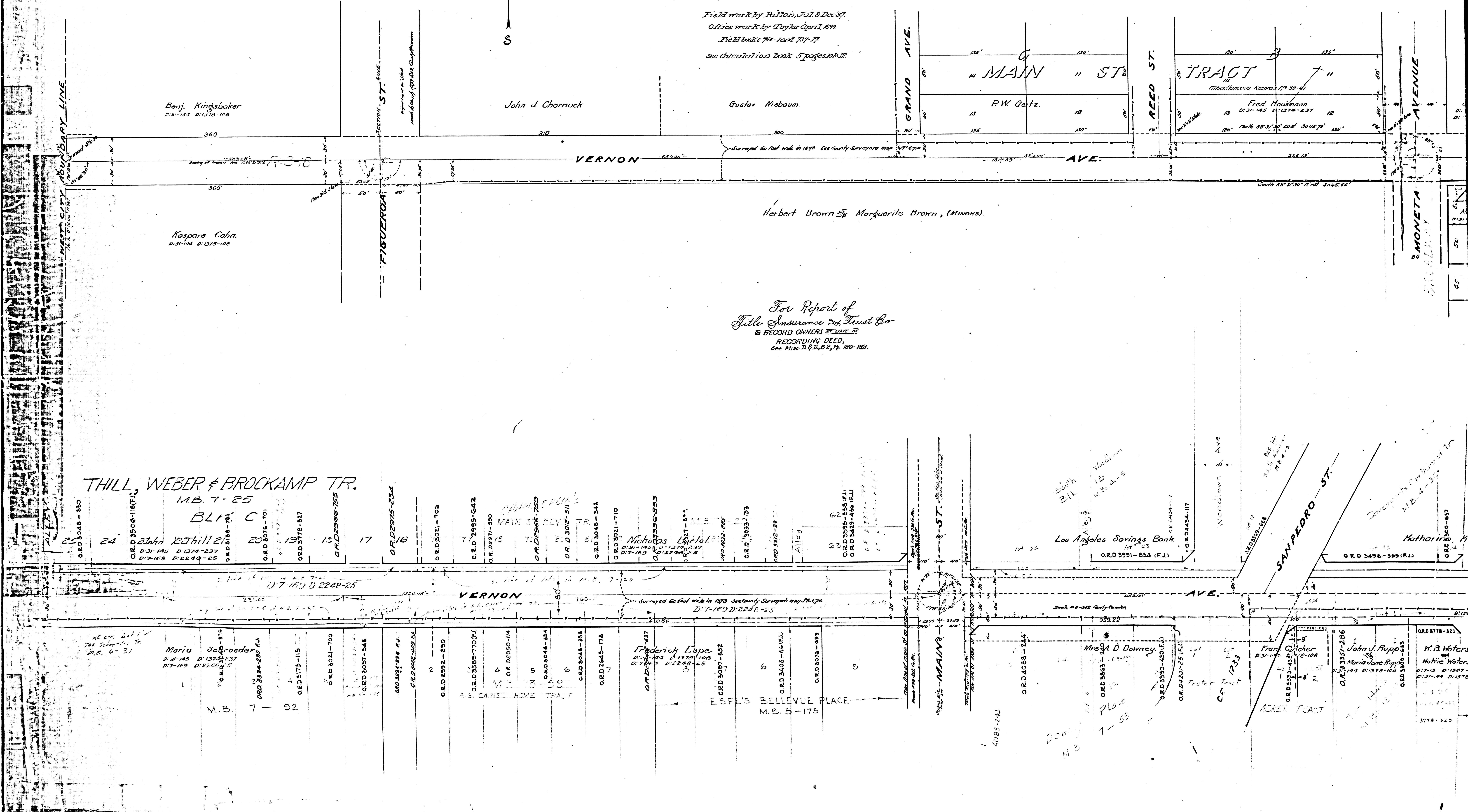
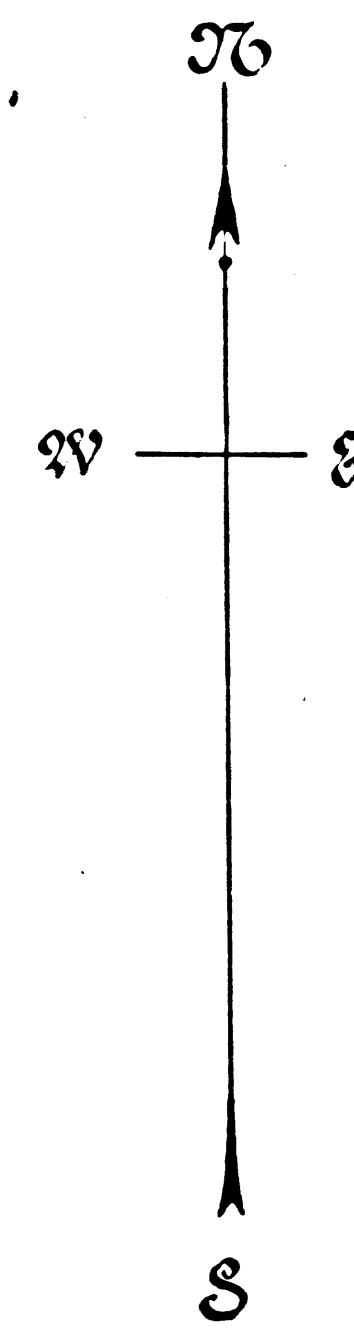
F.M. 17077
A1 OF A5

For deeds to Vernon Ave. See
D. 31-144 D. 1370-100
D. 31-143 D. 1374-237
D. 31-145 D. 1380-145
D. 31-146 D. 1384-3
D. 31-144 D. 1384-3

Sht. 7

Scale - 50 feet to 1 inch

Field work by Patton, Jul. & Dec. '11
Office work by Taylor April, 1899
Field books 784-1 and 787-11
See Calculation Book 5 pages 206-72



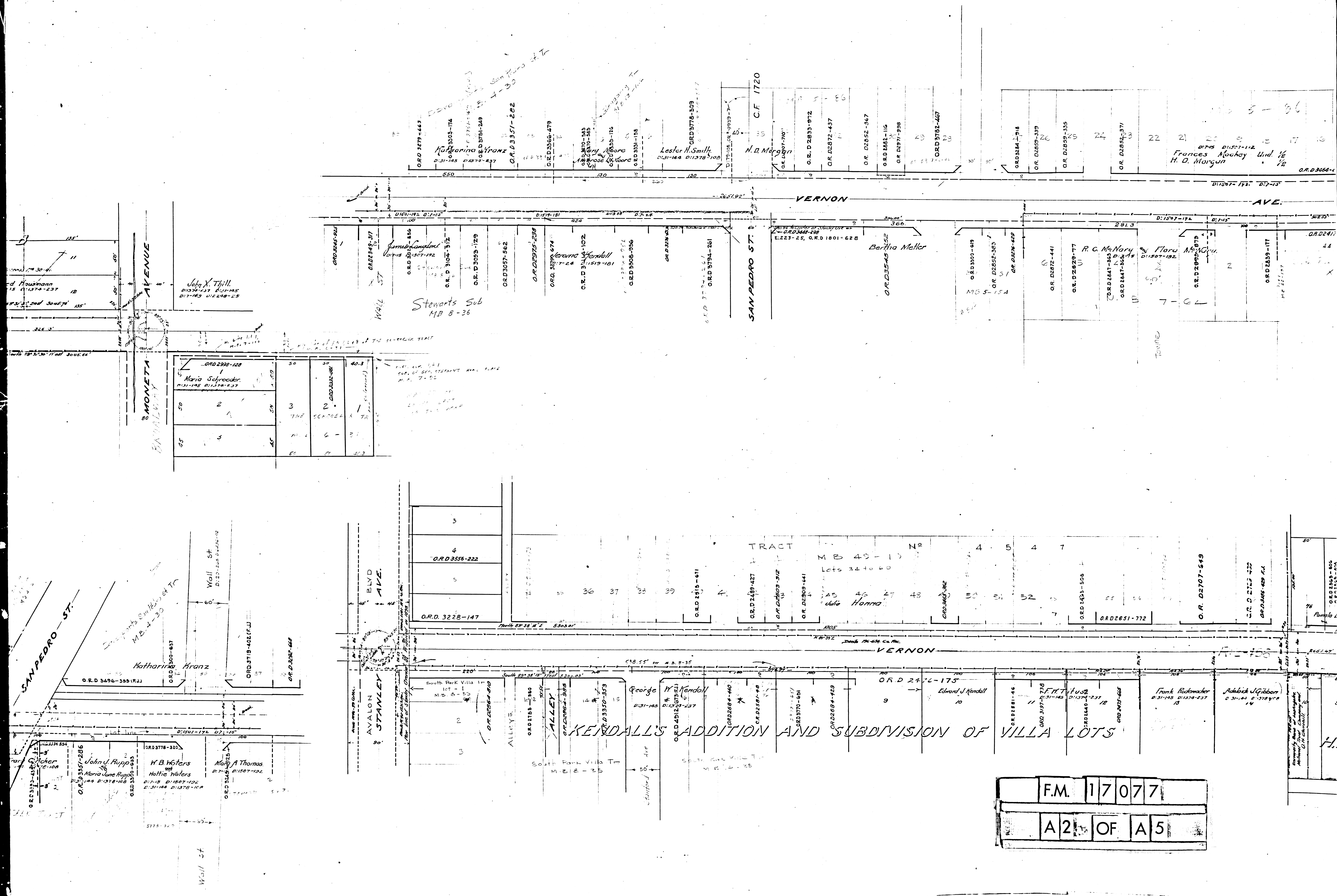
For Report of
Title Insurance Trust Co.
RECORD OWNERS BY DATE OF
RECORDING DEED,
See Misc. 2 & 3, B.P. 7, 107-122.

THILL, WEBER & BROCKAMP TR.
M.B. 7-25
BLK C

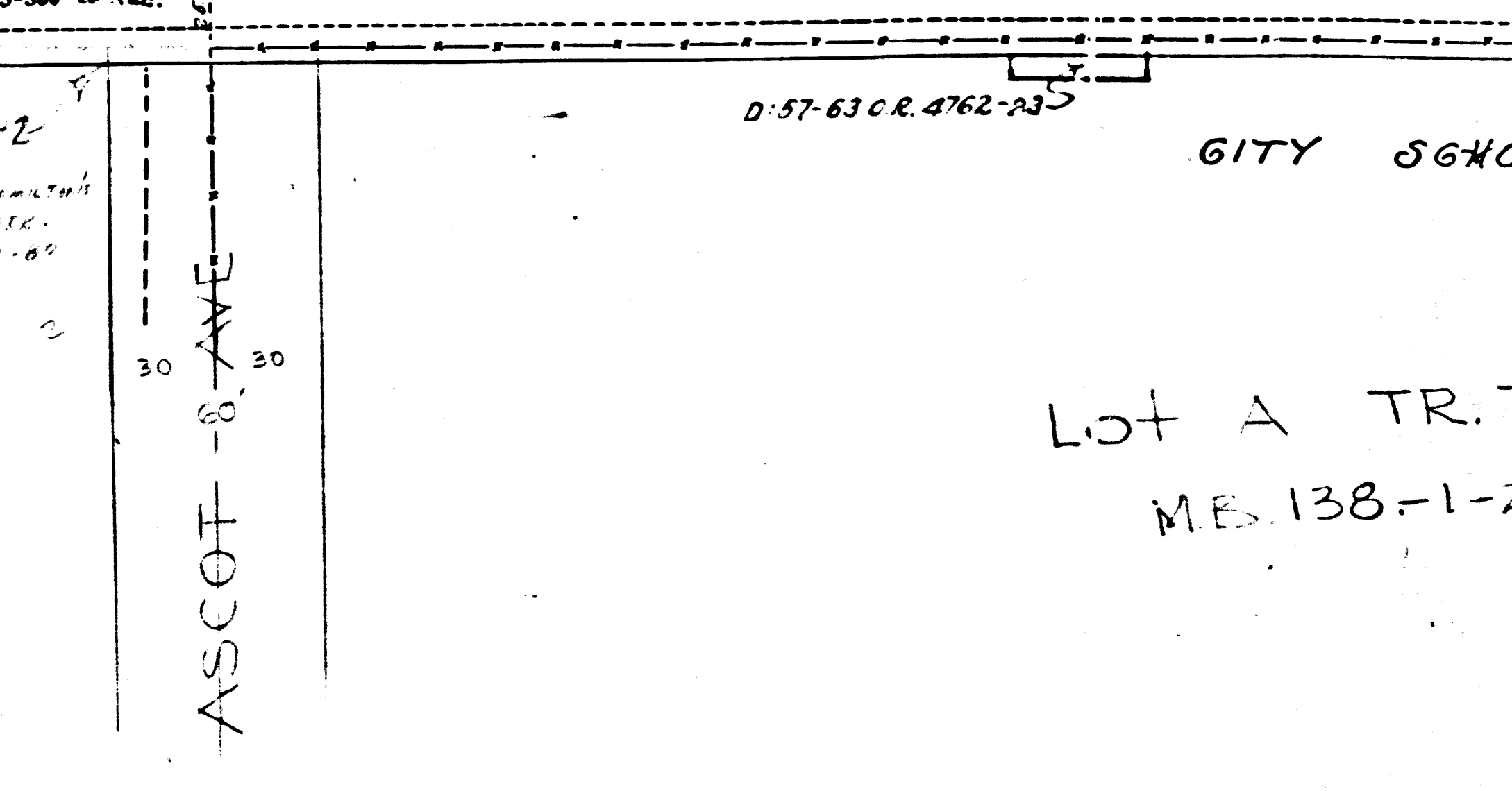
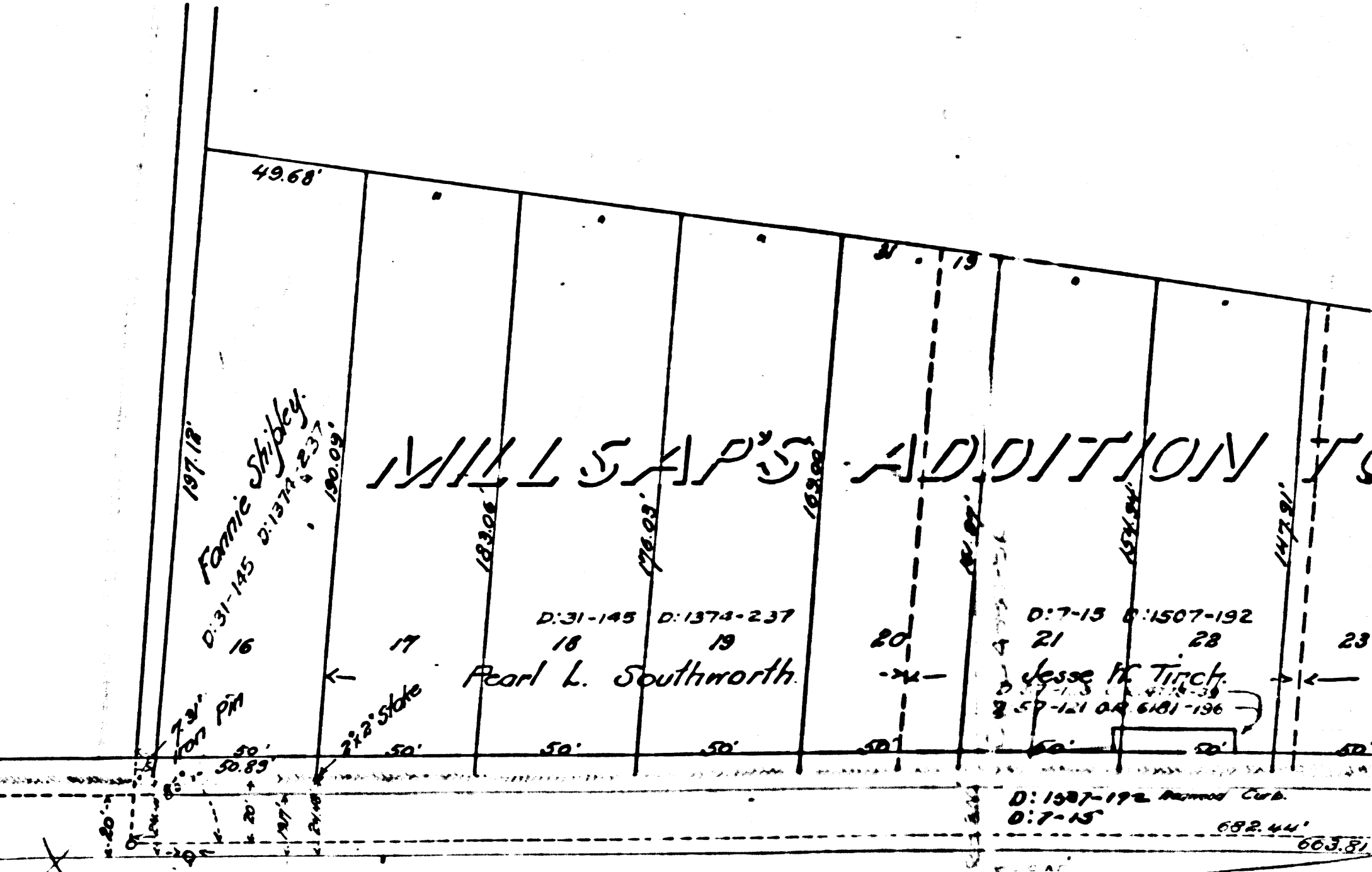
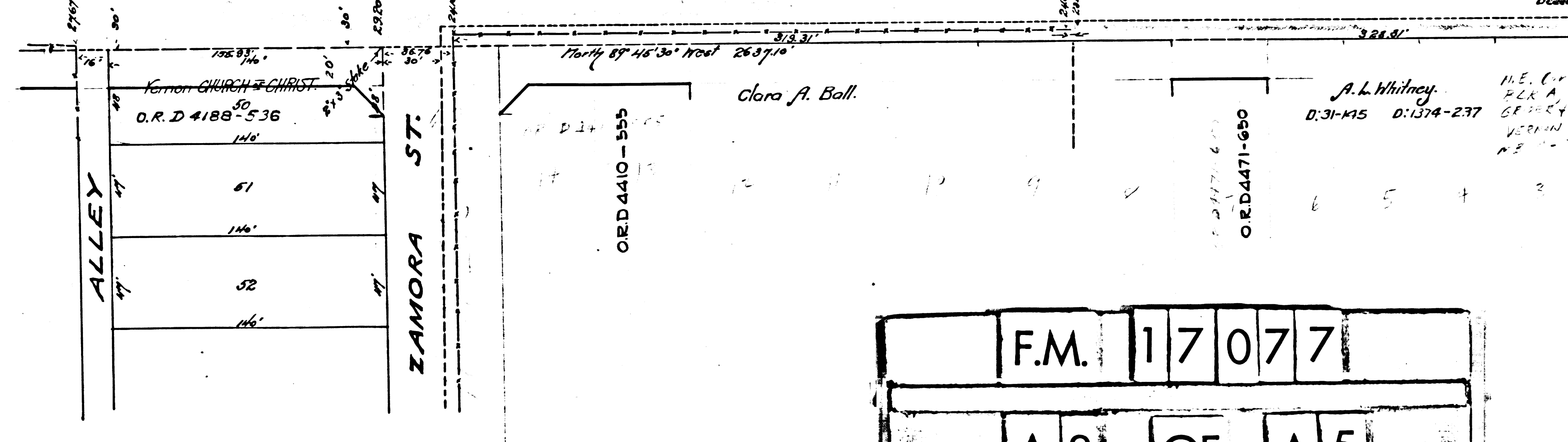
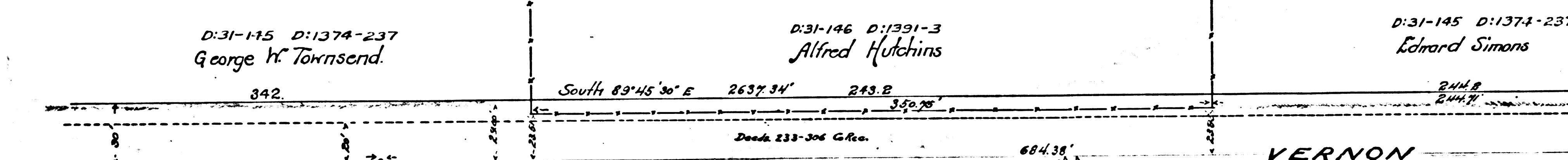
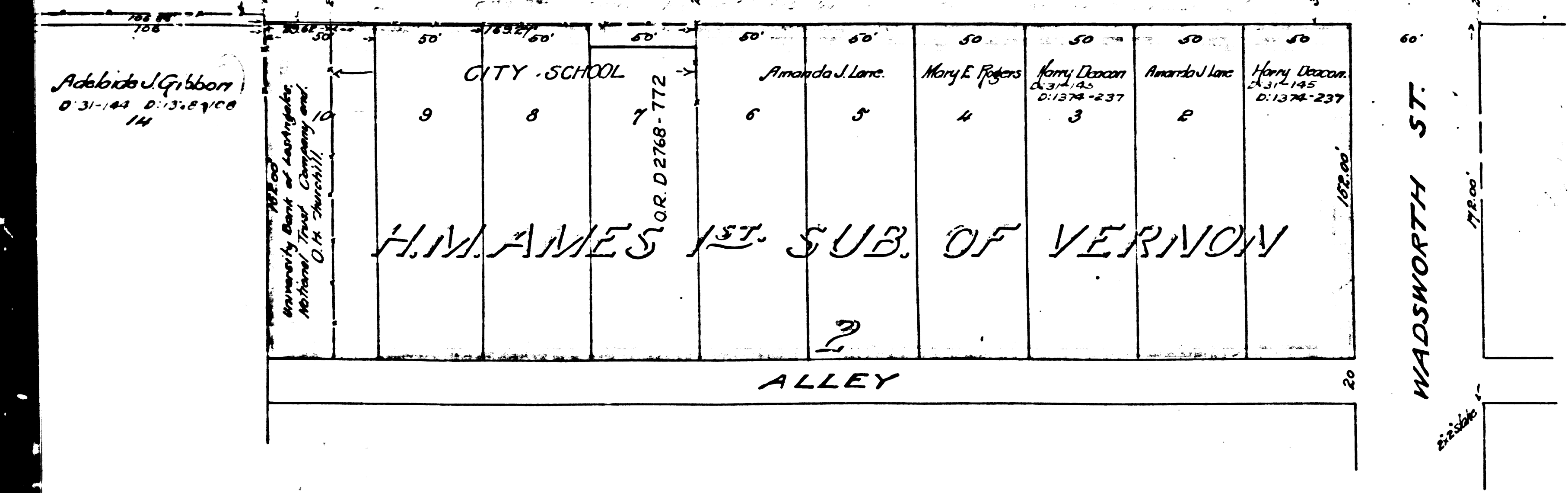
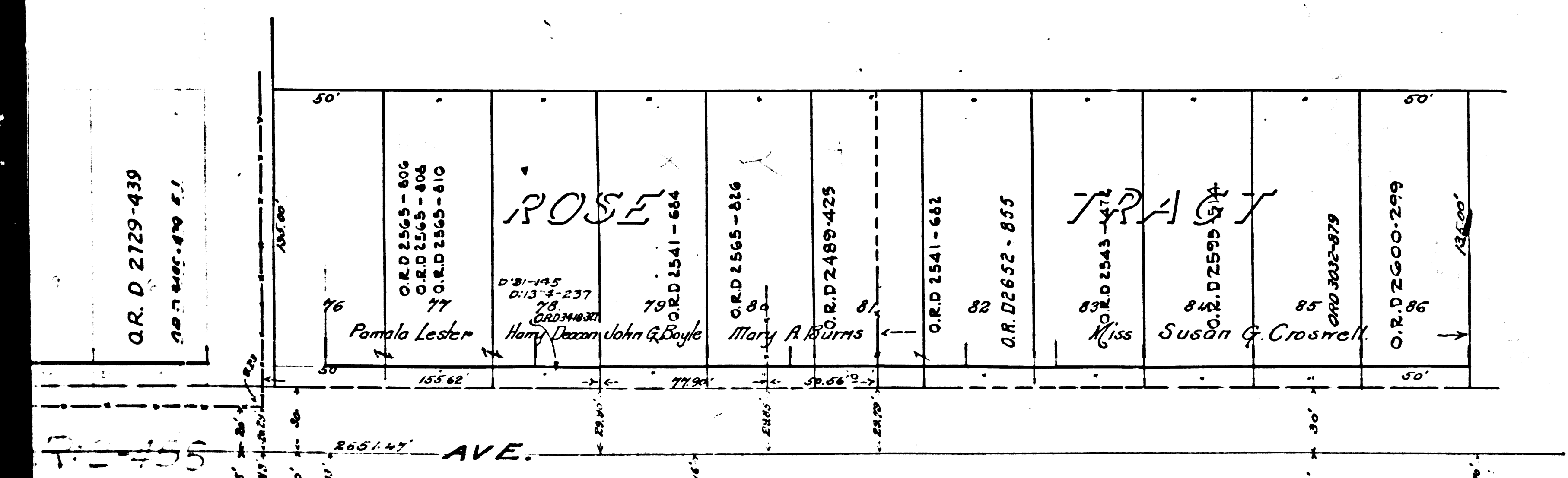
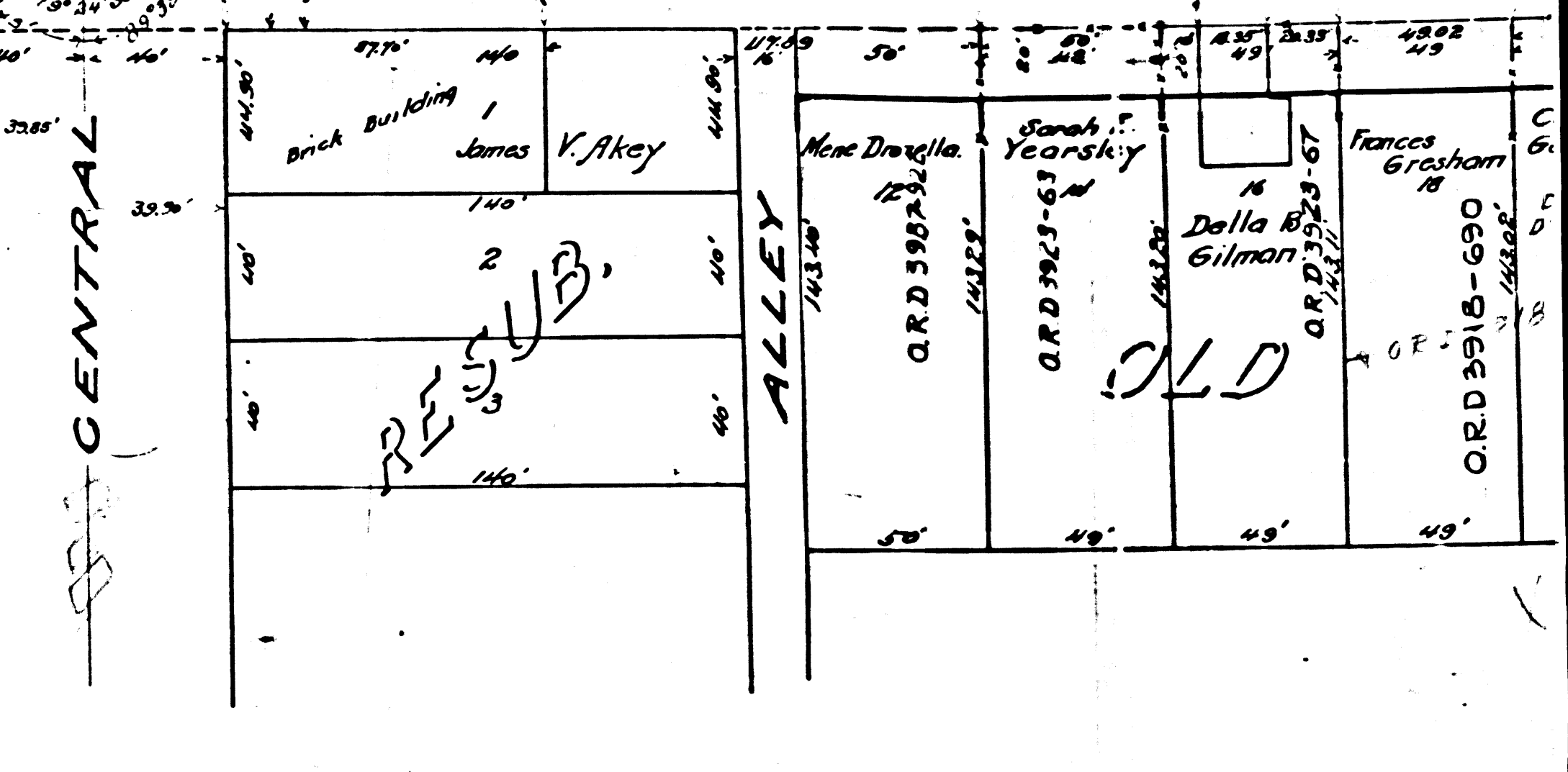
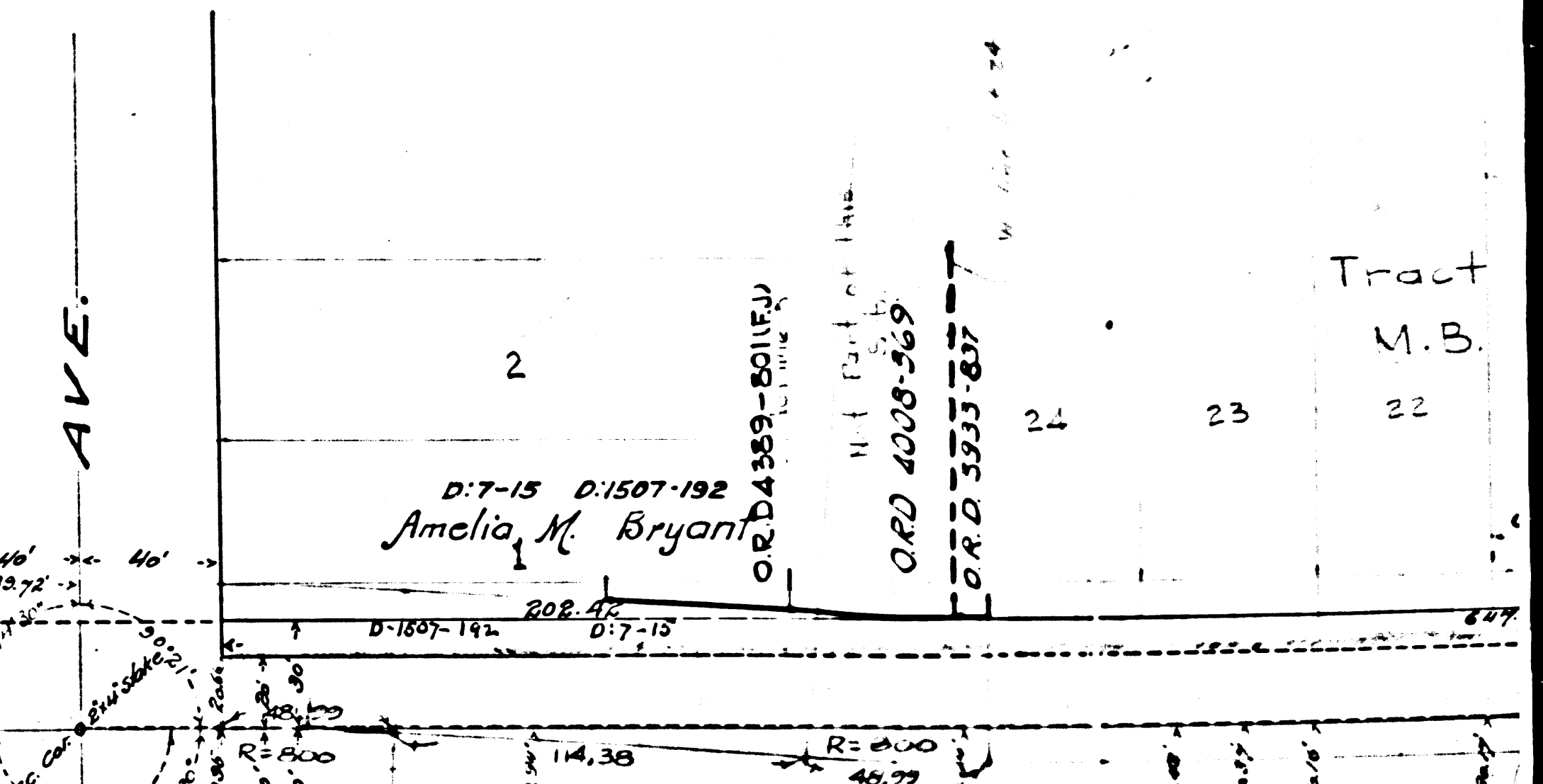
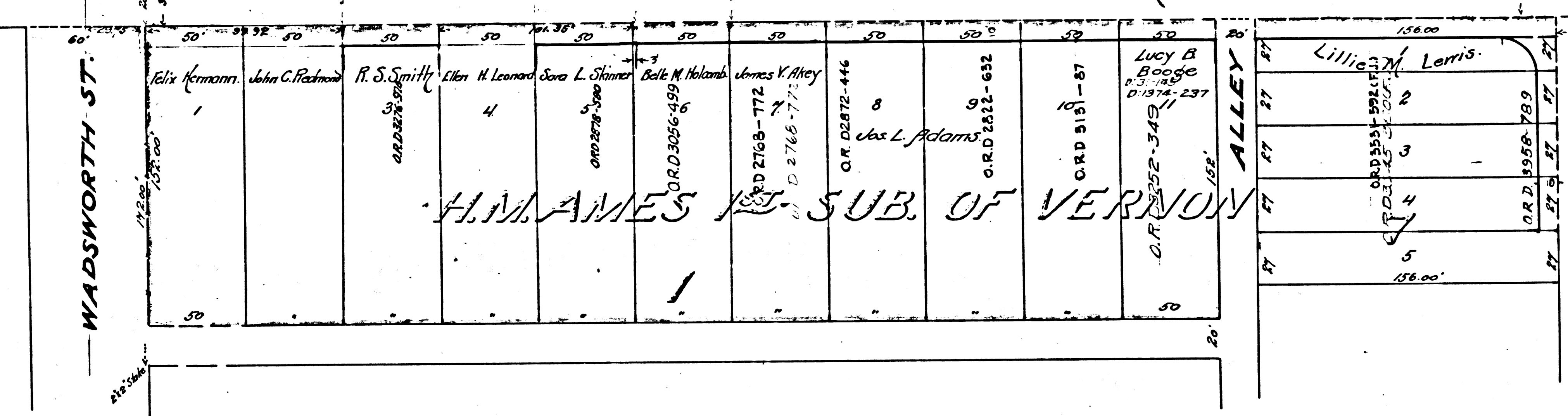
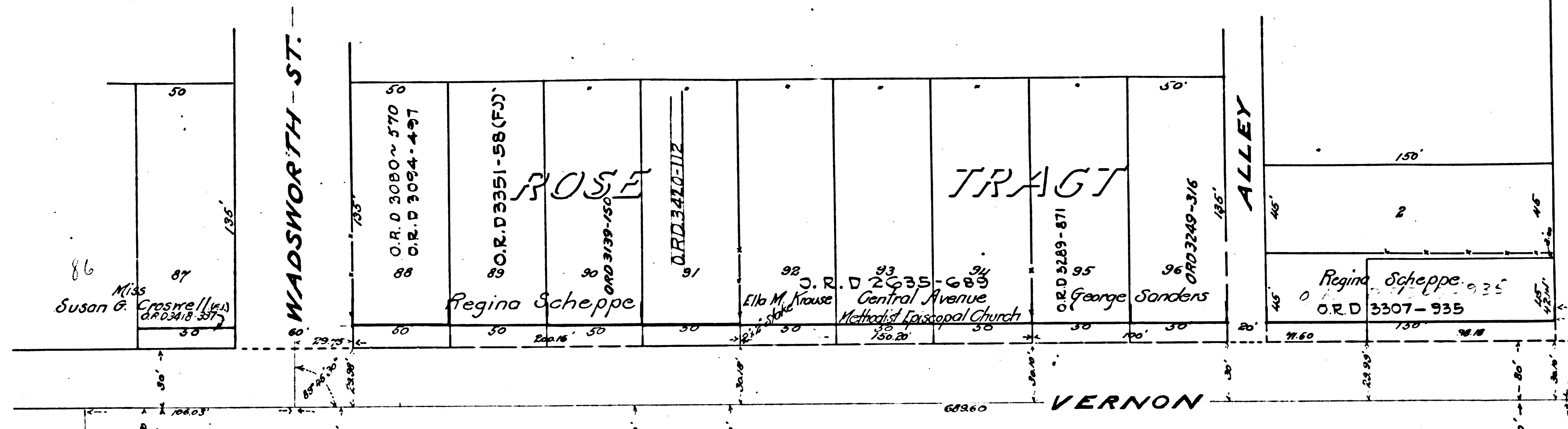
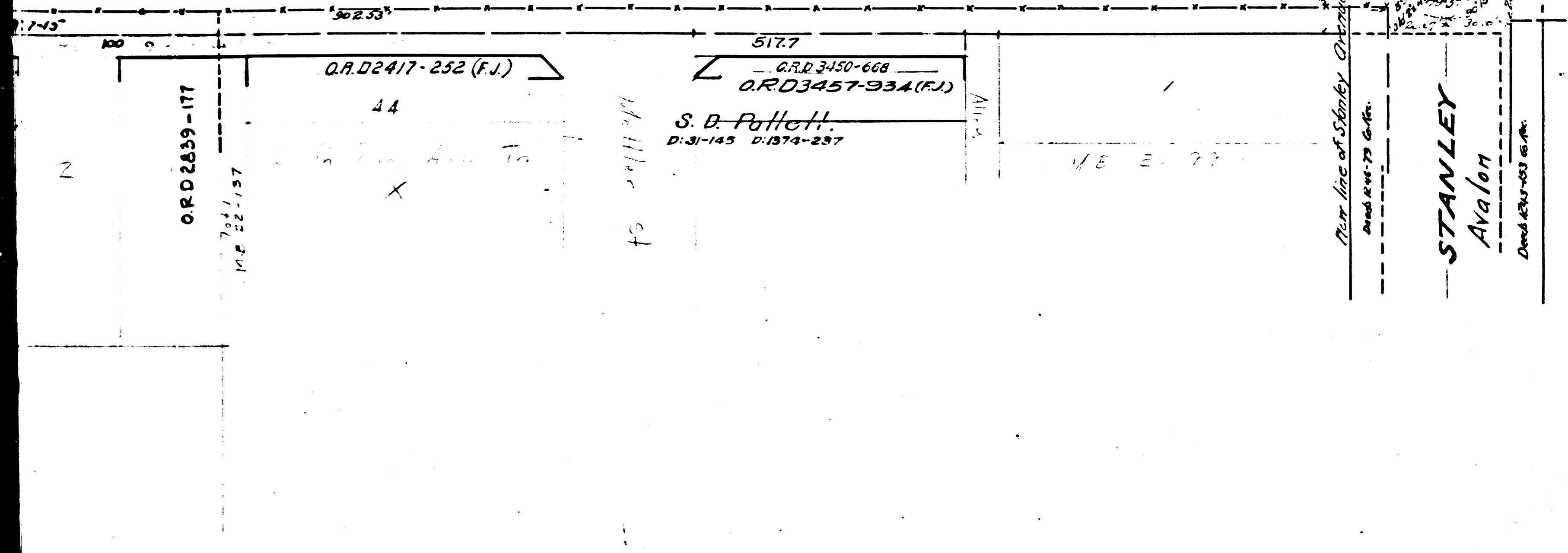
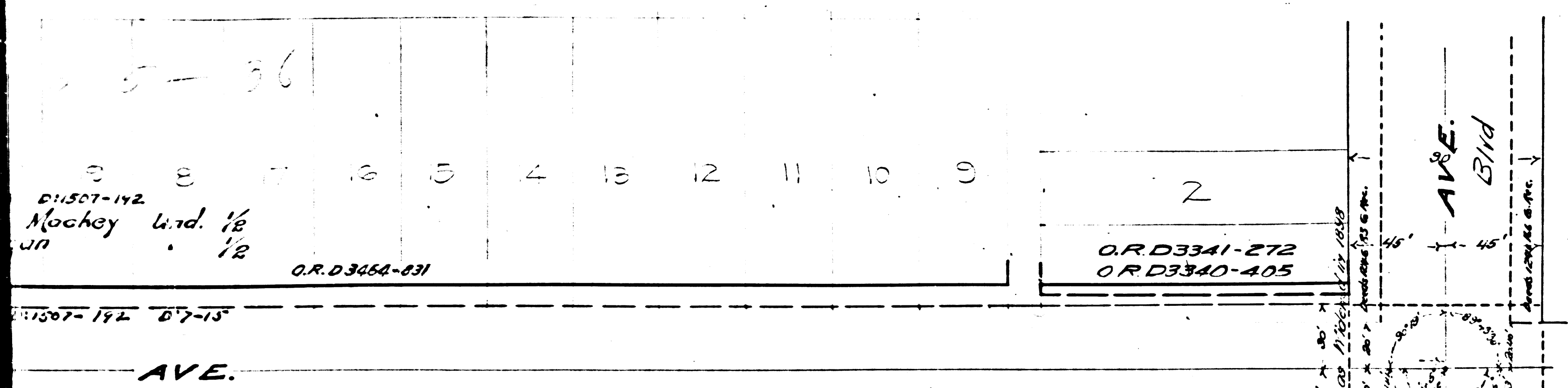
M.B. 7-92

ESPE'S BELLEVUE PLACE
M.B. 5-175

ACKER TRACT

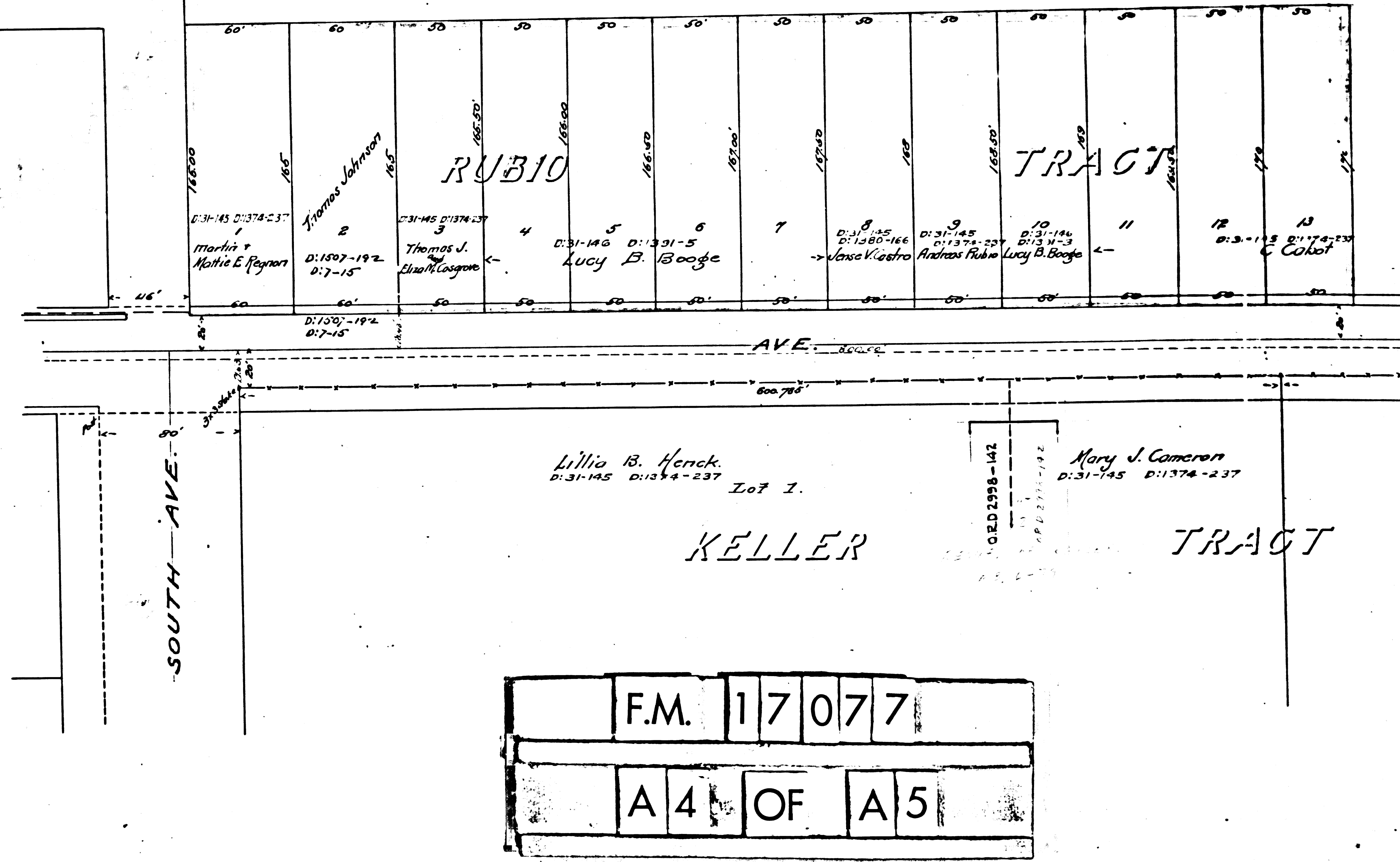
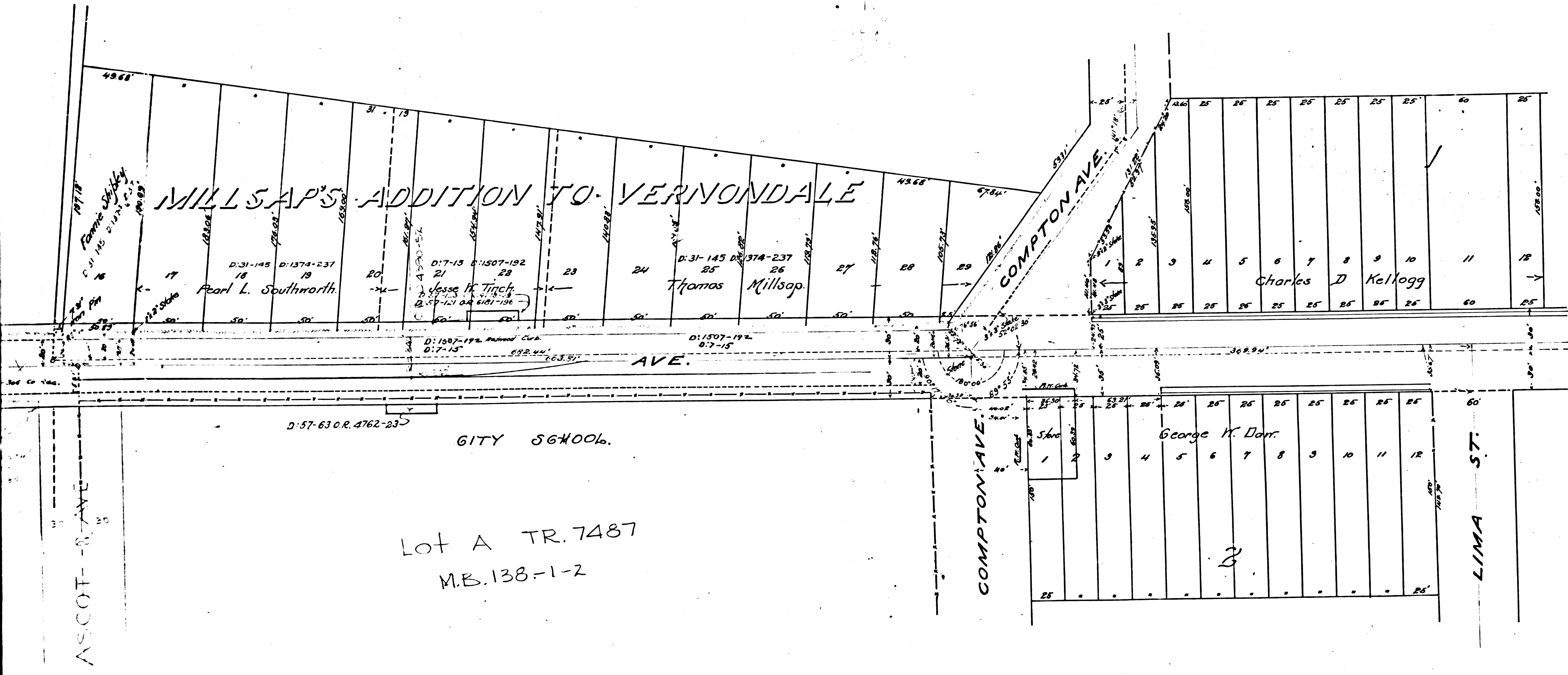
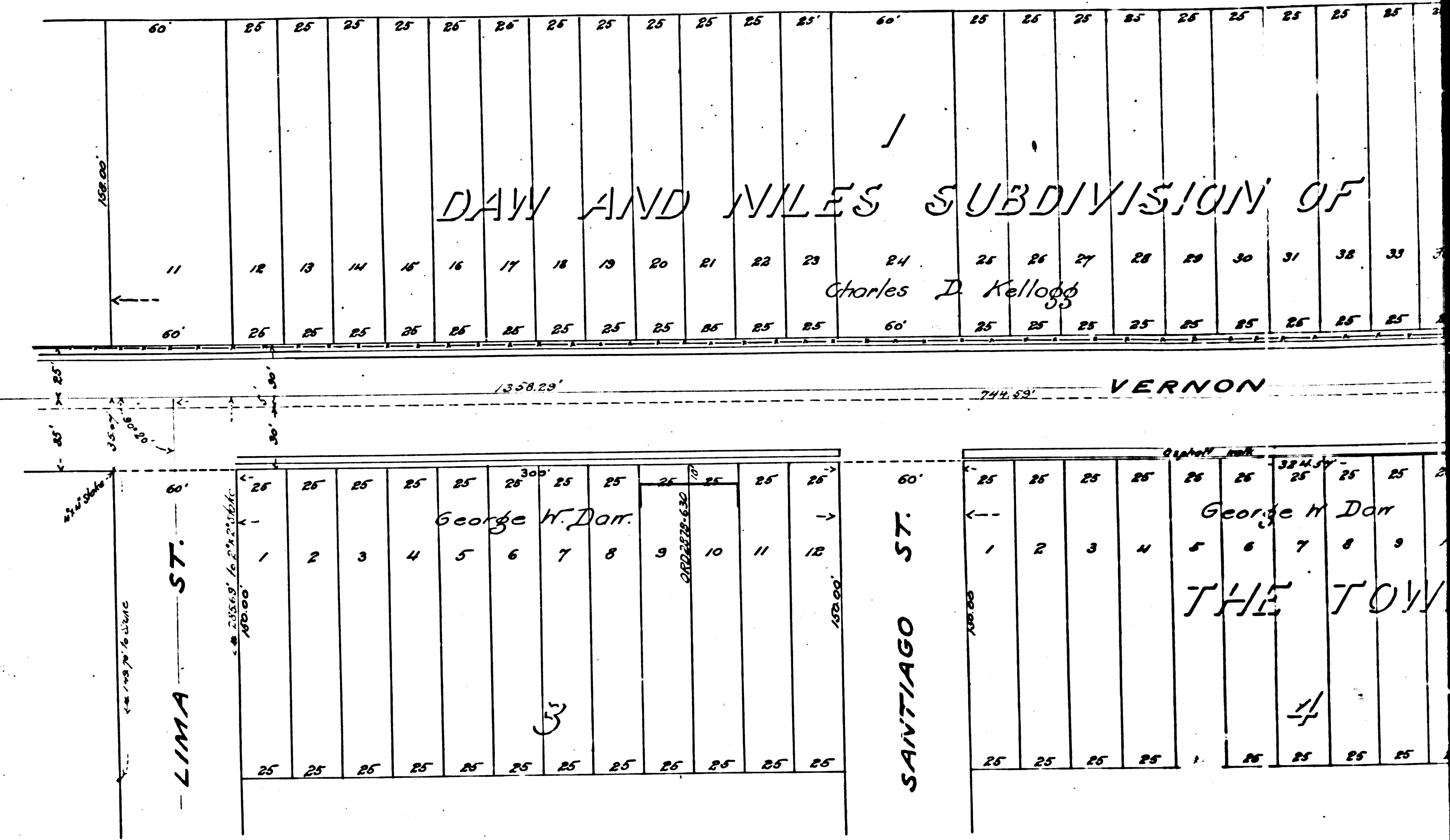
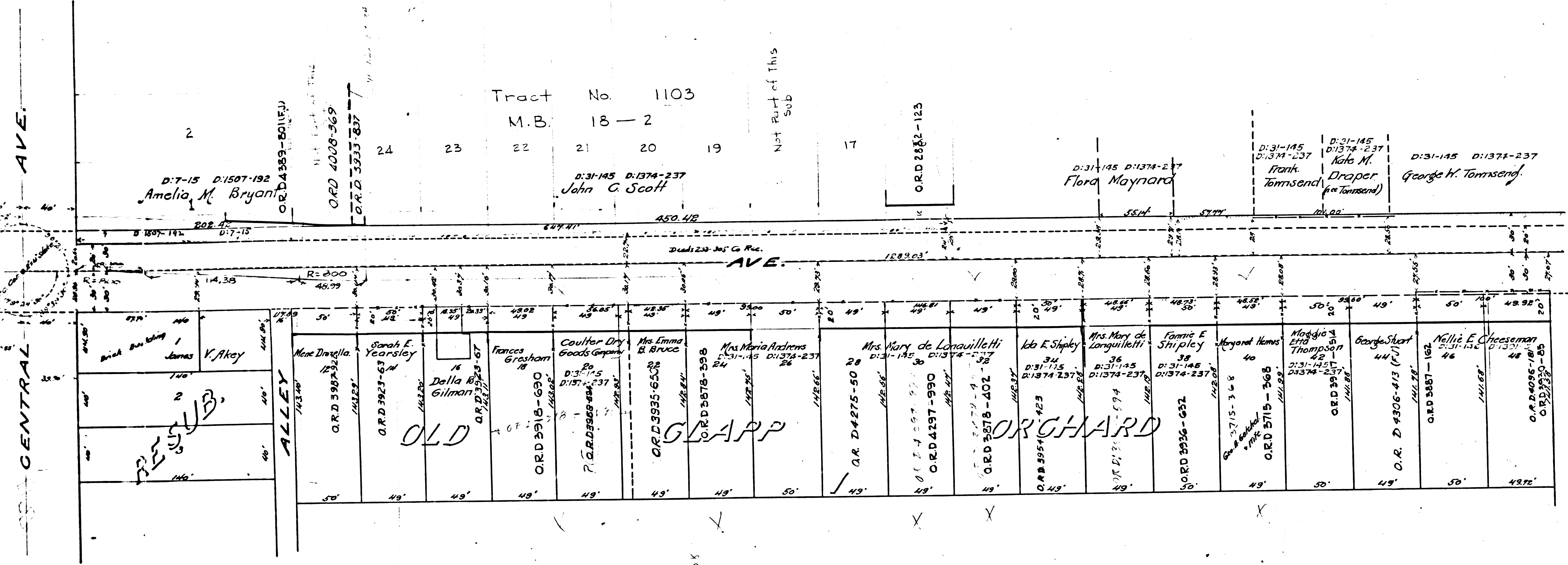


F.M. 17077
 A2 OF A5



F.M. 17077

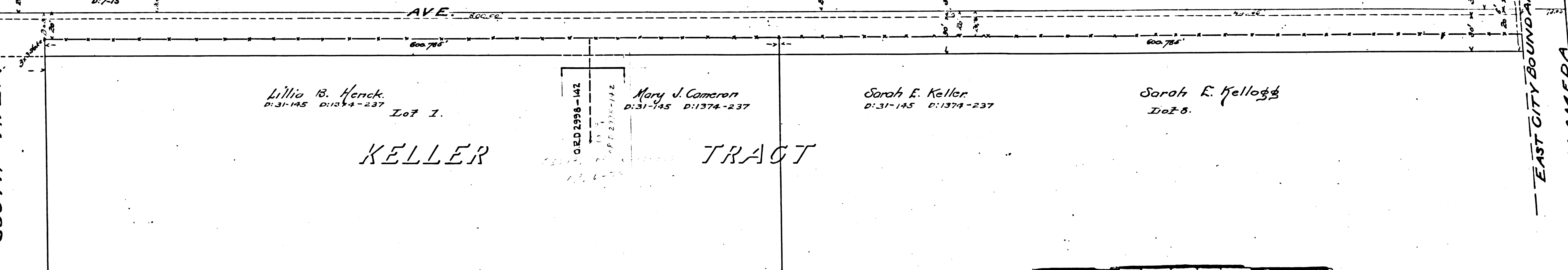
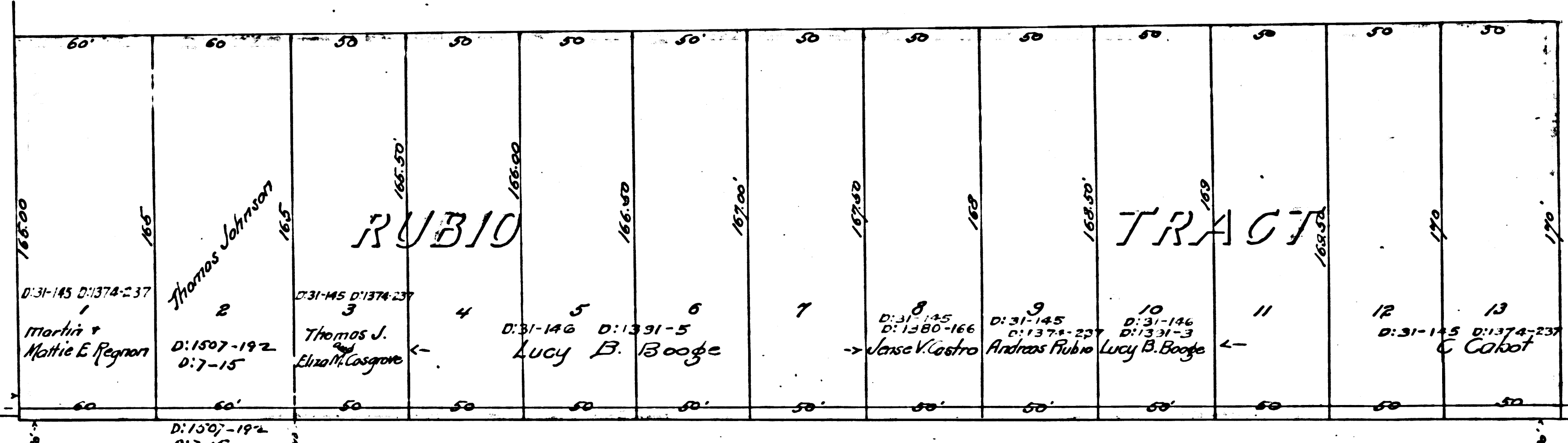
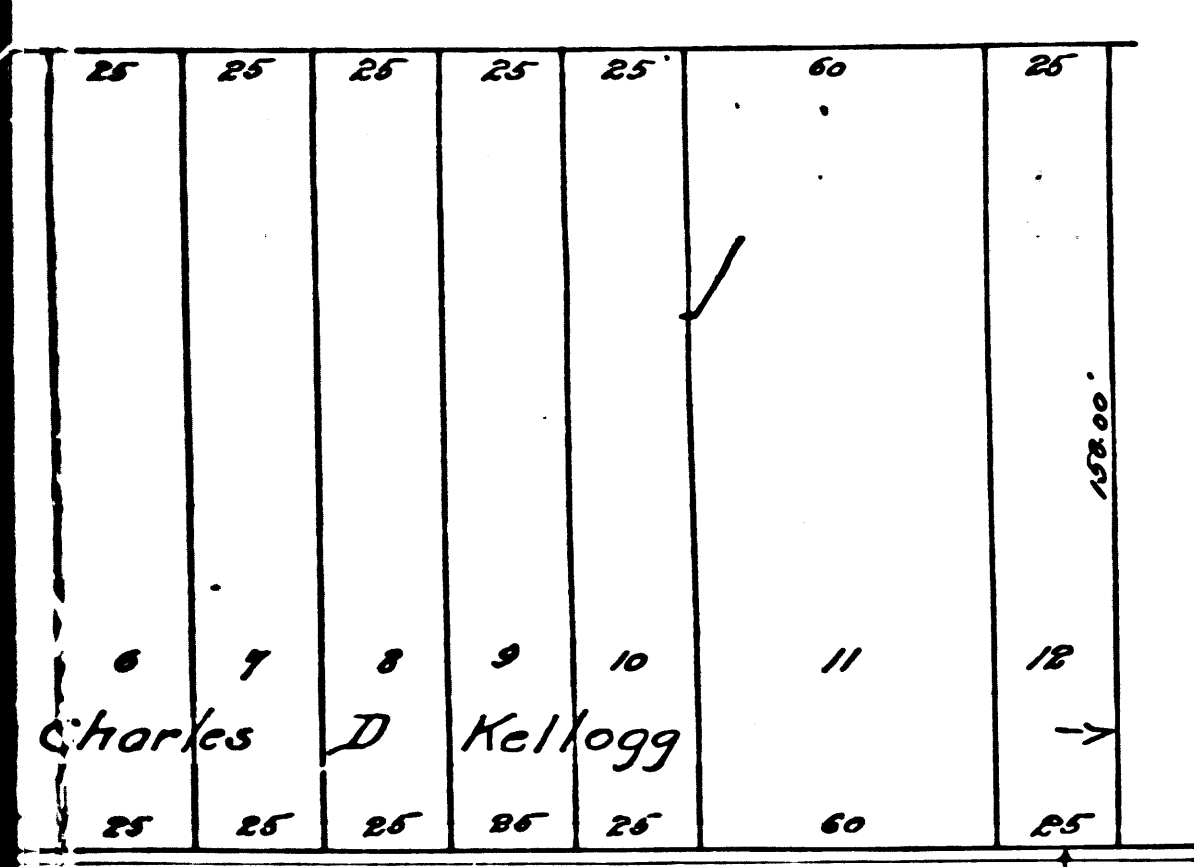
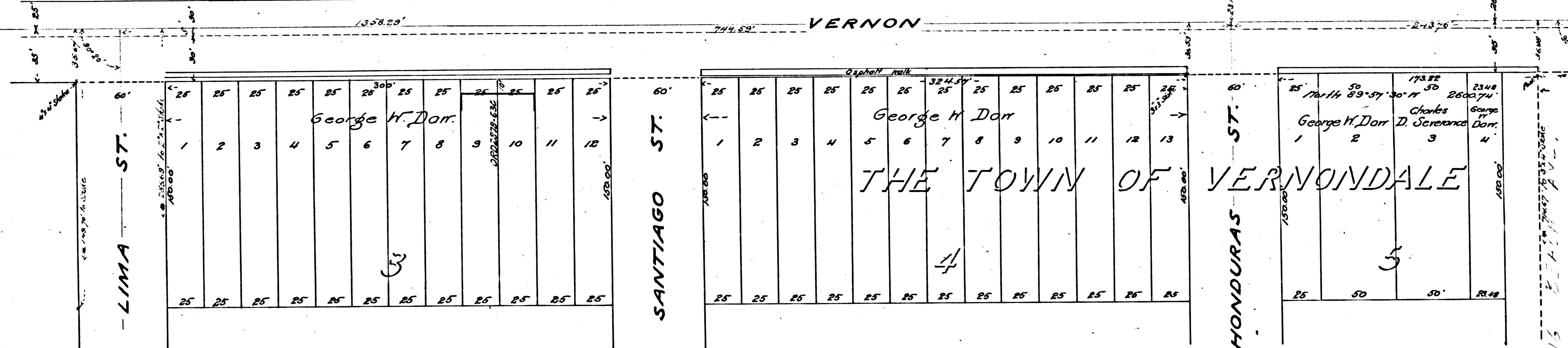
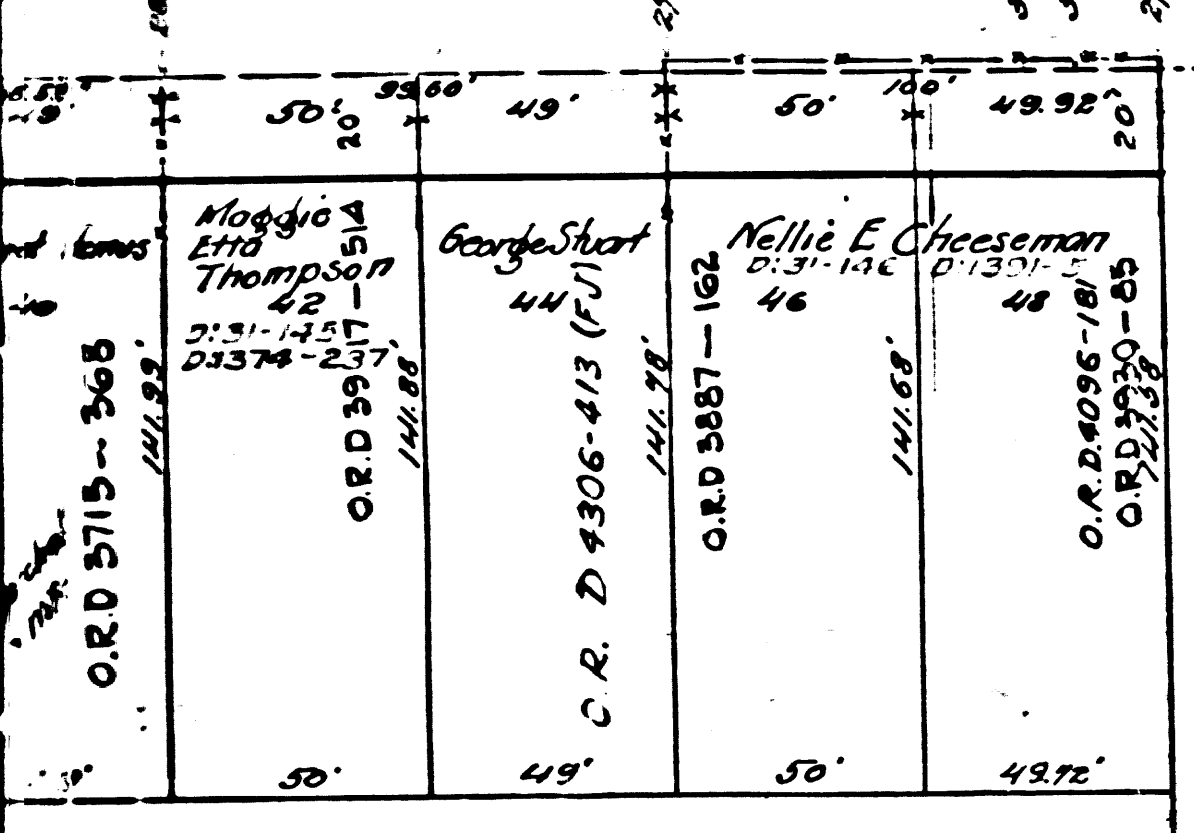
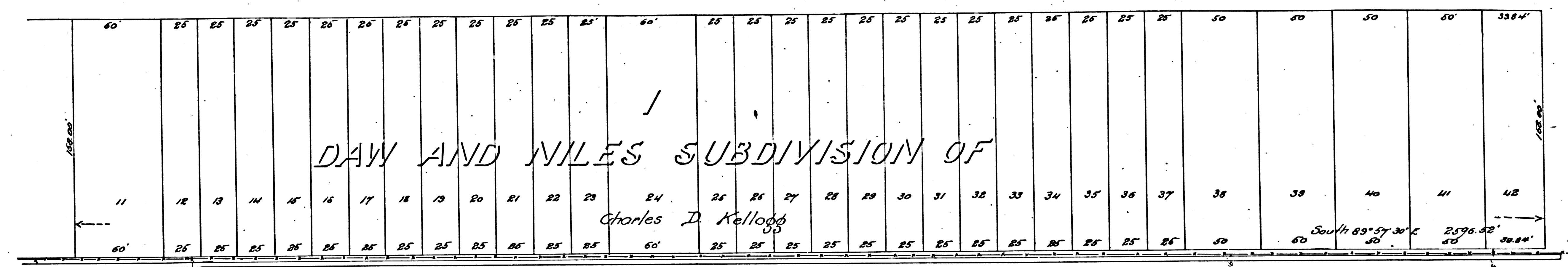
A 3 OF A 5



D.31-145
D.1374-237
Frank
Tomsond

D.31-145
D.1374-237
Kate M.
Droper
(M. Tomsond)

D.31-145
D.1374-237
George W. Tomsond



F.M. 17077
A 5 OF A 5