

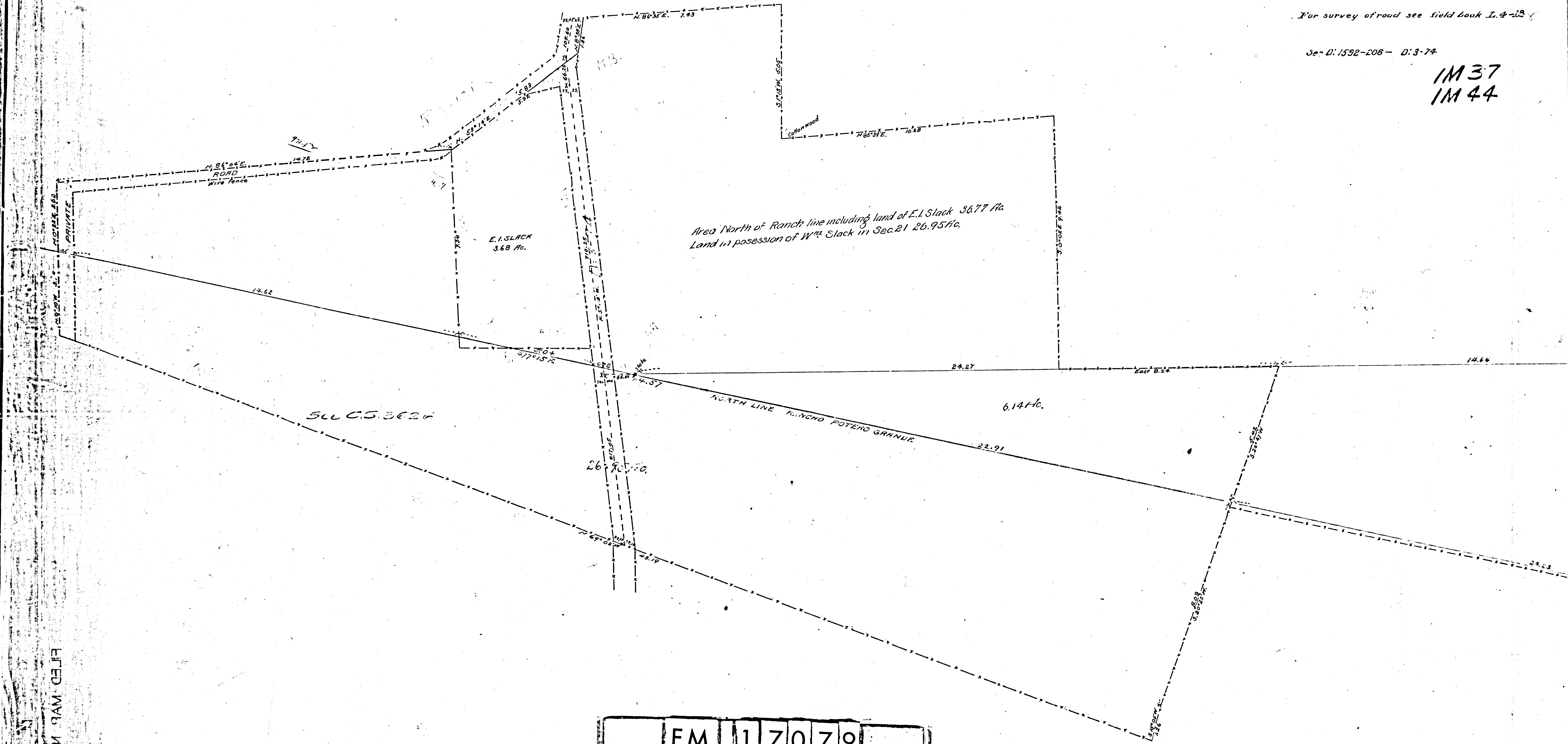
Lands owned by and in possession of
WILLIAM SLACK
 Being portions of Sections 21 & 28 T. 1 S. R. 11 W. S. B. M.
 and part of the Rancho Potrero Grande
 Los Angeles Co. Calif.

Scale 1 inch = 2 Chains
 Surveyed May 1899
 By *Ernest Fisher*

For survey of road see field book L. 4-23

See D: 1592-208 - D: 3-74

1M37
 1M44



F.M.	1	7079
A1	OF	A2

FILED MAR 10 1899

FILED MAR 10 1899

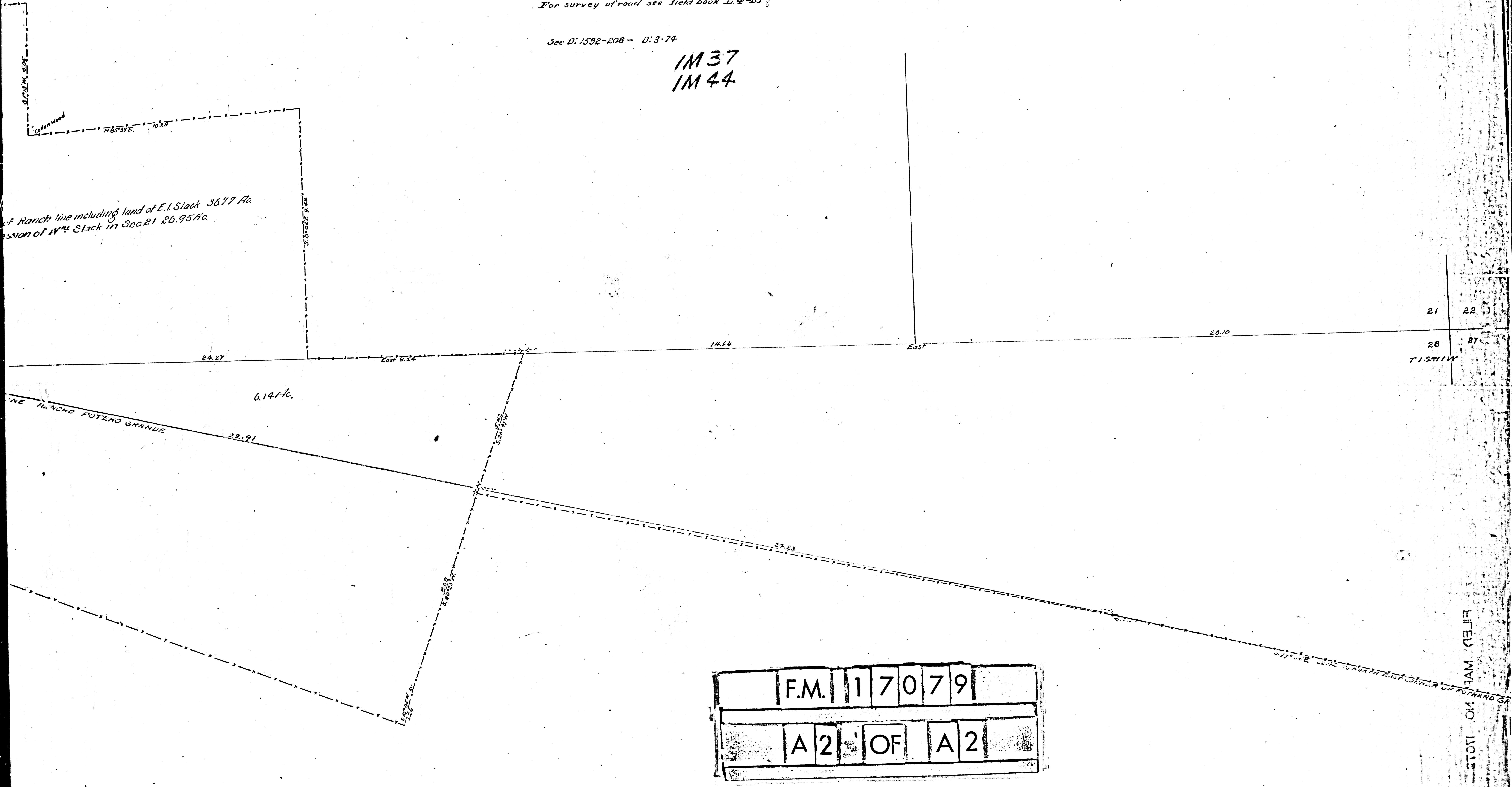
Lands owned by and in possession of
—WILLIAM SLACK—
Being portions of Sections 21 & 28 T. 1 S. R. 11 W. S. B. M.
and part of the Rancho Patrero Grande
Los Angeles Co Calif.

Scale 1 inch = 2 Chains
Surveyed May 1899
By *Smith Fisher*

For survey of road see field book L. 4-18

See D: 1592-208 - D: 3-74

1M37
1M44



Ranch line including land of E. I. Slack 36.77 Aa
cession of Wm Slack in Sec. 21 26.95 Aa.

21 22
28 27
T. 1 S. R. 11 W.

F.M. 17079
A 2 OF A 2

FILED MAY 10 1902