

FILED IN PAM. 1902

MAP

Showing property sought to be condemned
for the opening and widening of
STATE STREET

from
Brooklyn Avenue
to the intersection of
Mission Road and Griffin Avenue
in the
City of Los Angeles

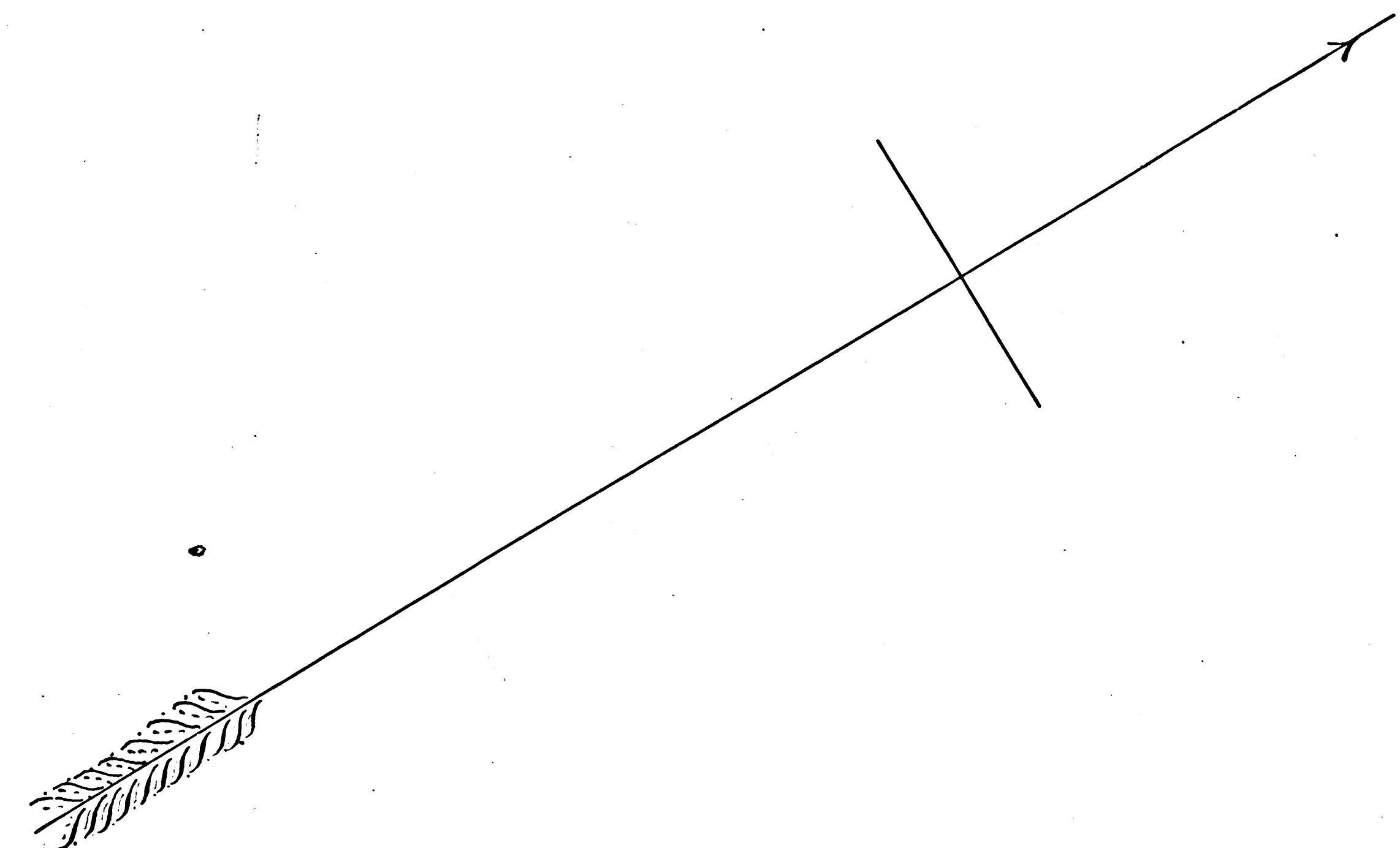
In accordance with Ordinance N^o 7078 (New Series)
Scale 100 feet to one Inch

April 1902

Harry F. Stafford
City Engineer

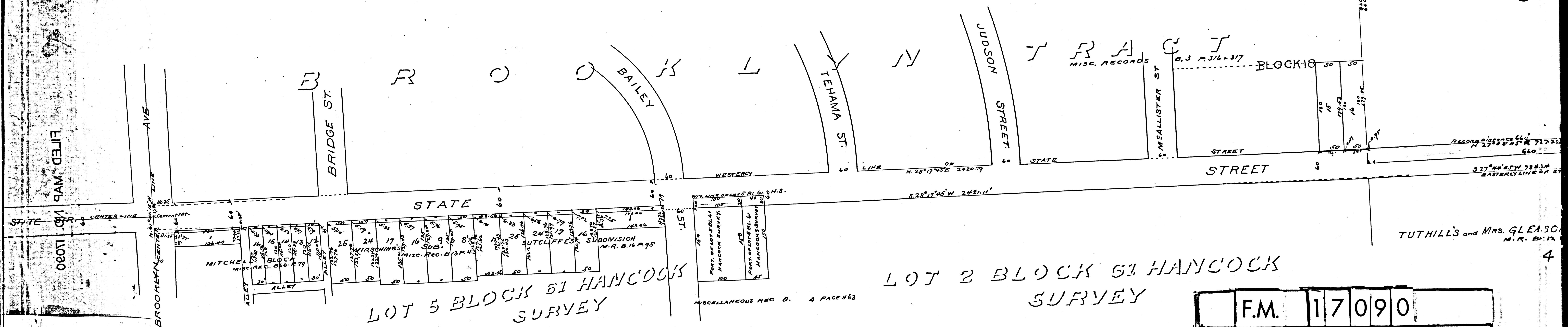
Traced from Map filed with District Atty.

IM 7
IM 8



Note Red Tint shows property
to be condemned.

DRAWN
3



TUTHILL'S and Mrs. GLEASON
M. R. B. 12

LOT 2 BLOCK 51 HANCOCK
SURVEY

F.M.	17090
A1	OF A2

4

