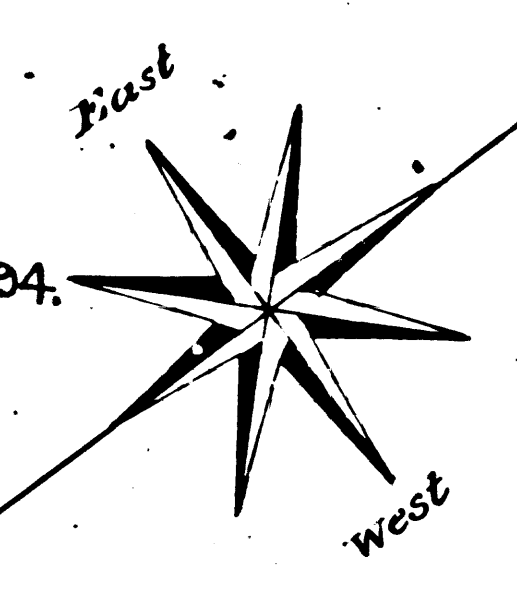
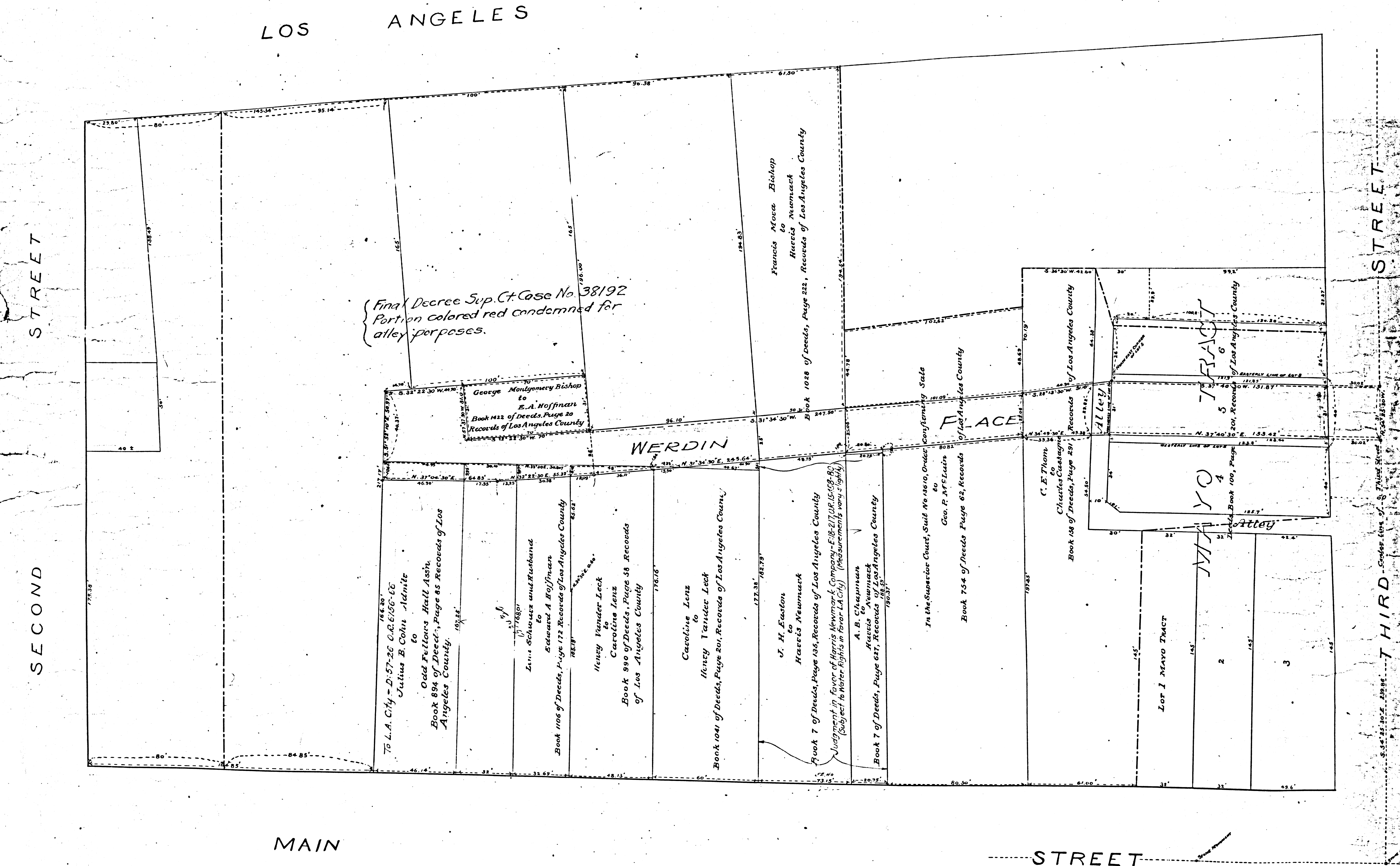


**MAP**  
 OF THE ASSESSMENT DISTRICT  
 for the opening of an  
**ALLEY IM 9**  
 in the Block bounded by  
 SECOND STREET, THIRD STREET, MAIN STREET & LOS ANGELES STREET,  
 in the  
**CITY of LOS ANGELES**  
 In accordance with Ordinance No 6882 (New Series)  
 Scale, 30 Feet to one inch.  
 Harry F. Stafford  
 January 1902. City Engineer.

Werdin Alley changed to Werdin Place, Ord. 25094.  
 Map Approved September 1902.  
 City Engineer



Note: The exterior boundaries of District of Assessment shown by green lines.



SECOND STREET

LOS ANGELES

STREET

THIRD STREET

MAIN STREET

STREET

A.21 5115

F.M. 117101