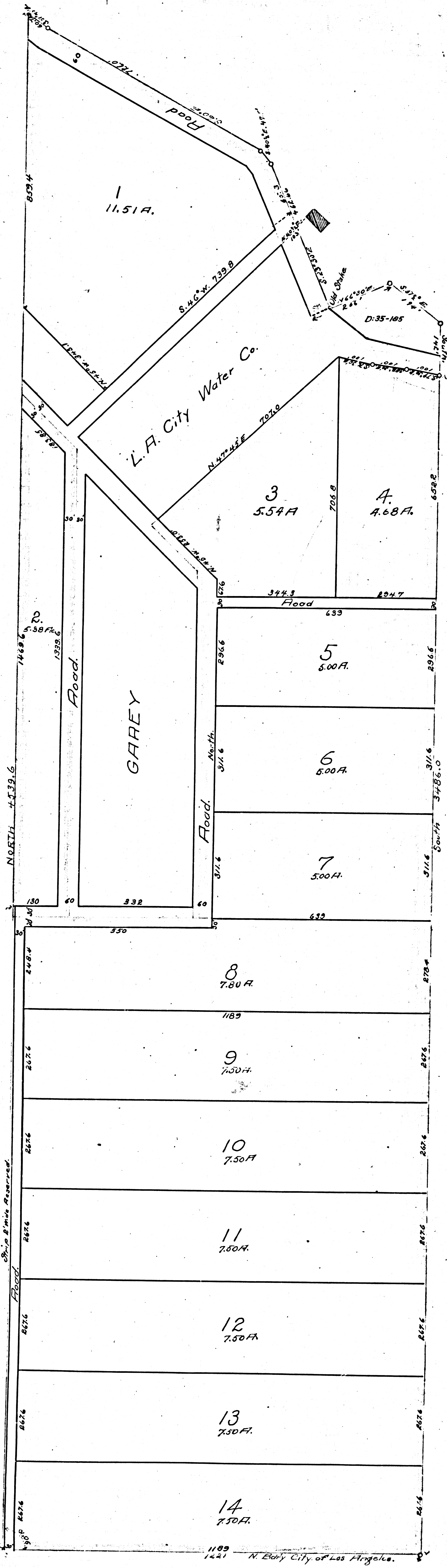


IVANHOE



F.M. 17107

MAP  
OF THE  
**MALTMAN VILLA TRACT**

*Being a Portion of Ro. Los Feliz  
In Los Angeles County, California.*

Scale 200'-1"  
Surveyed June 1894  
By  
Pillsbury & Skinner

*Copied From Map Loaned By Owner.*

Rowena St. named, ord 34497  
ord 34490

Stone Monument  
L.A. Co. Los Angeles  
City Reserve No. 51a.