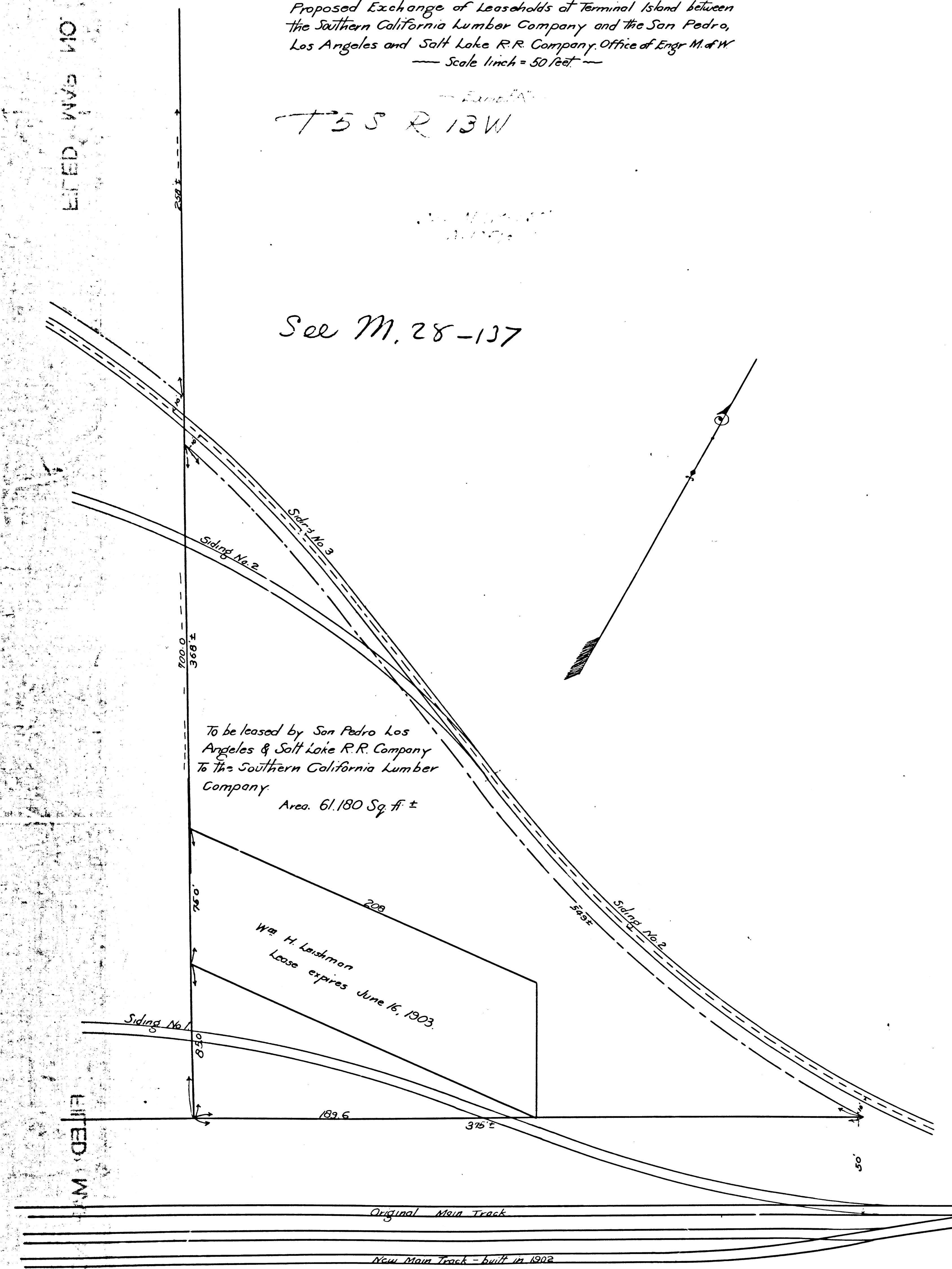


— Lease —
 San Pedro, Los Angeles & Salt Lake Railroad Company.
 — To —
 The Southern California Lumber Company.

— S.P.L.A. & S.L.R.R. —
 Proposed Exchange of Leaseholds at Terminal Island between
 the Southern California Lumber Company and the San Pedro,
 Los Angeles and Salt Lake R.R. Company, Office of Engr. M. & W.
 — Scale 1 inch = 50 feet —

T5S R13W

See M. 28-137

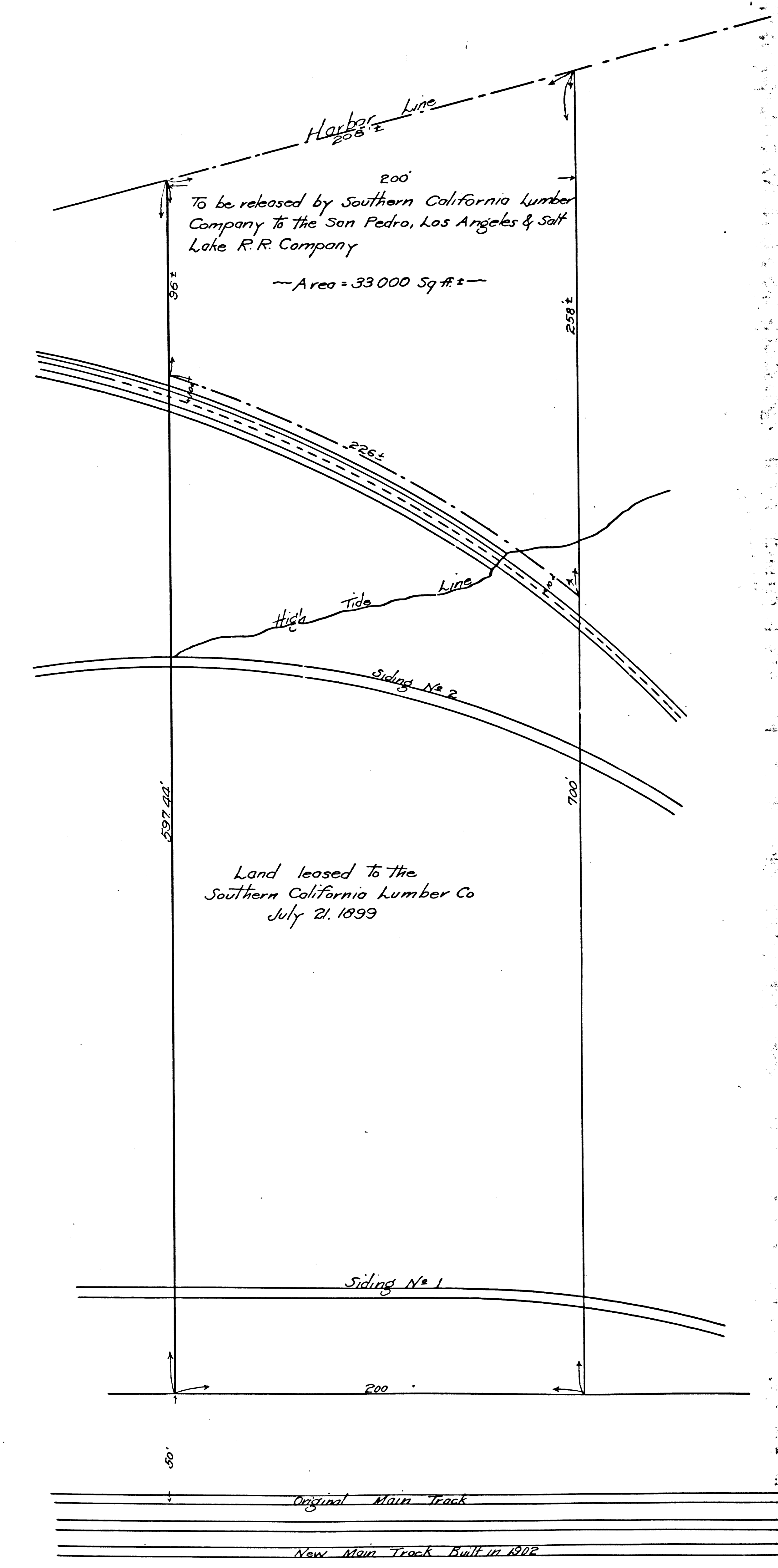


FILED MAP NO. 1152

FILED MAP NO. 1152

FILED MAP NO. 1152

F.M. 17125



FILED MAP NO. 1152

FILED MAP NO. 1152

FILED MAP NO. 1152

Recorded Nov. 3, 1903