

MAP
SHOWING THE
BOUNDARY LINE OF THE CITY OF LOS ANGELES

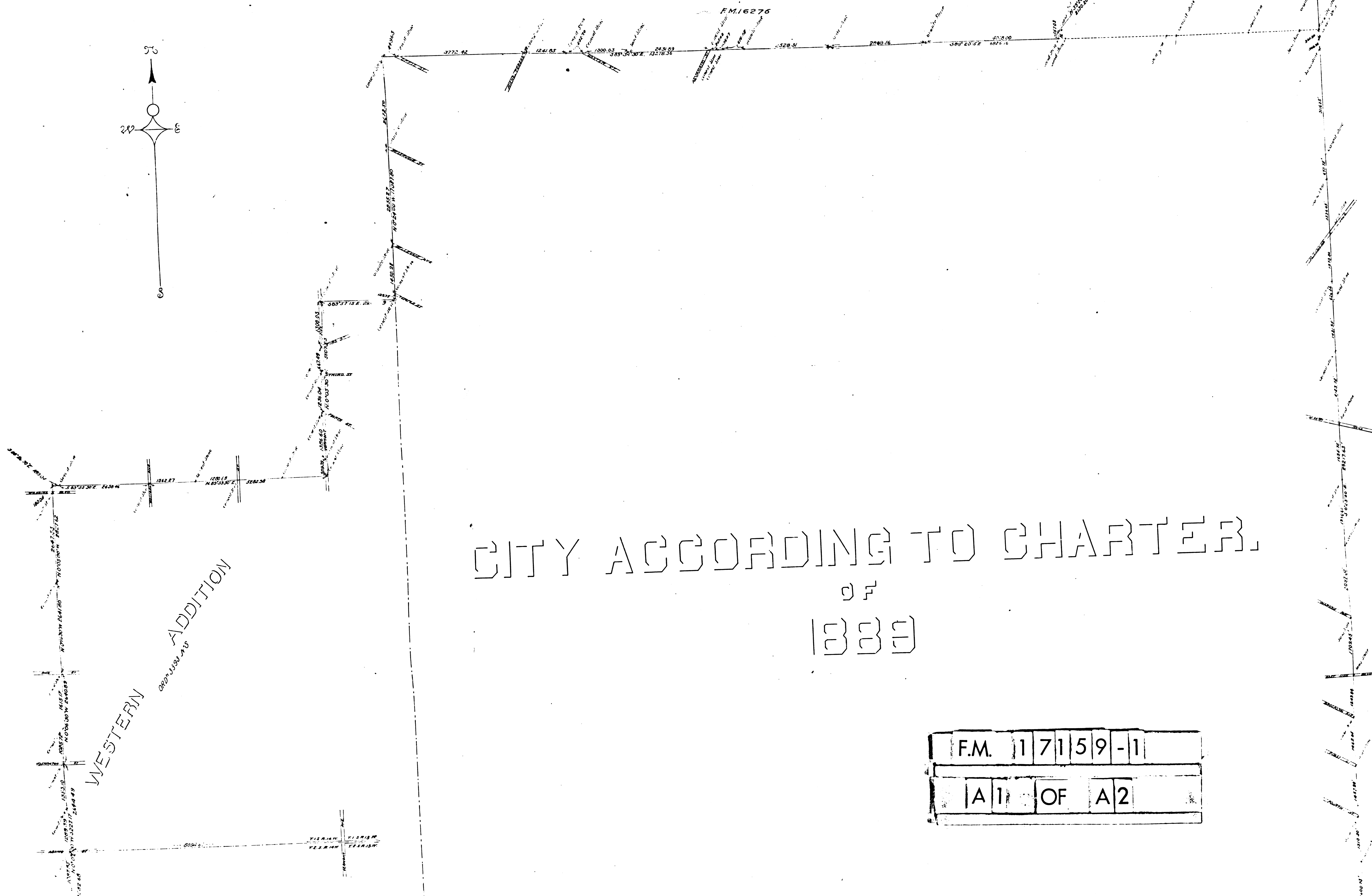
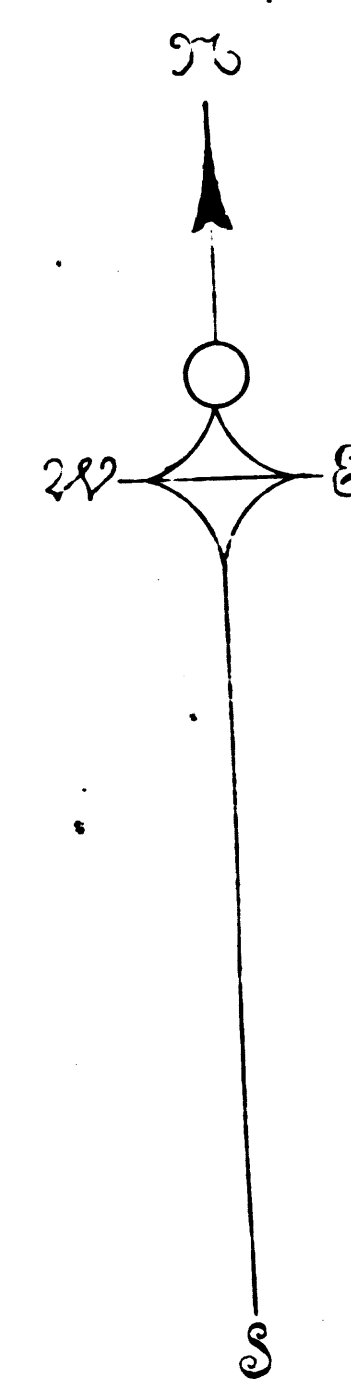
Comprising the City as described in the Charter of 1889
and also the Territory annexed under
Ordinances 112932 3393 5733 & 5734
Map begun 1900 F.H. Olmsted City Engineer
Map completed 1901, Harry T. Stafford City Engineer
Plotted by S. Workman & G. Symms

Scale, 20'-0" = 1" = 320'-0" = 1" inch

Field Books Nos. 611, 629, 640, 963 & 1030
Calculation Book Nos. 3, Pages 46 to 103

Index #8

Check
for former map of boundary line exclusive of University
and Garrison road. See Map # 4207



CITY ACCORDING TO CHARTER
OF
1889

| | | | | | | | |
|------|---|----|---|---|---|---|---|
| F.M. | 1 | 7 | 1 | 5 | 9 | - | 1 |
| A | 1 | OF | A | 2 | | | |

CITY ACCORDING TO CHARTER
OF
1889

WESTERN ADDITION
ORD. 3304 M.S.

UNIVERSITY ADDITION
ORD. 3734 M.S.

SOUTHERN ADDITION
ORD. 3393 M.S.

| | | | | | | | |
|------|---|----|---|---|---|---|---|
| F.M. | 1 | 7 | 1 | 5 | 9 | - | 1 |
| A | 2 | OF | A | 2 | | | |

Index #8

FILED MAP NO. 179
SHEET 1 OF 2

52-11-1889