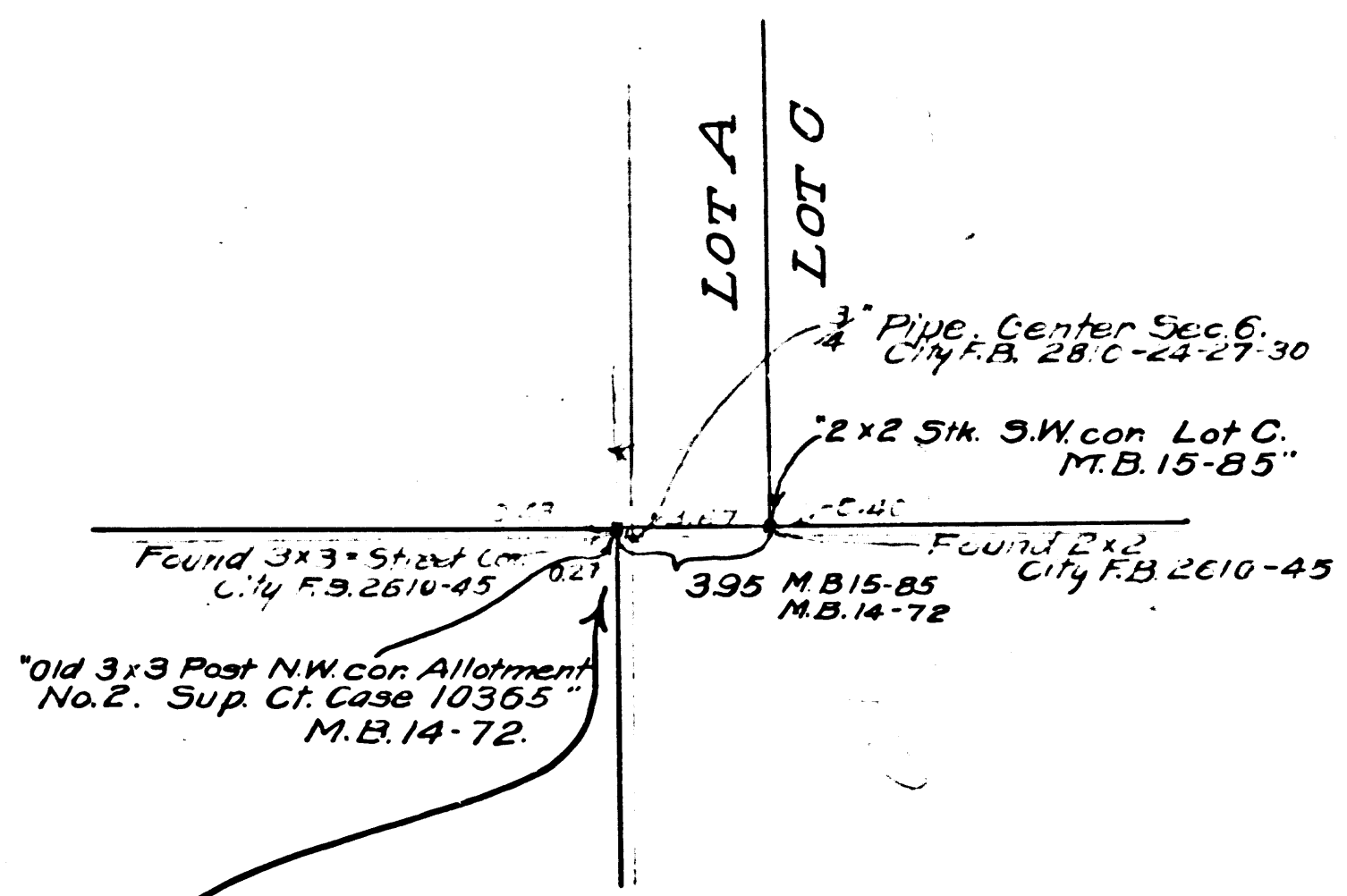
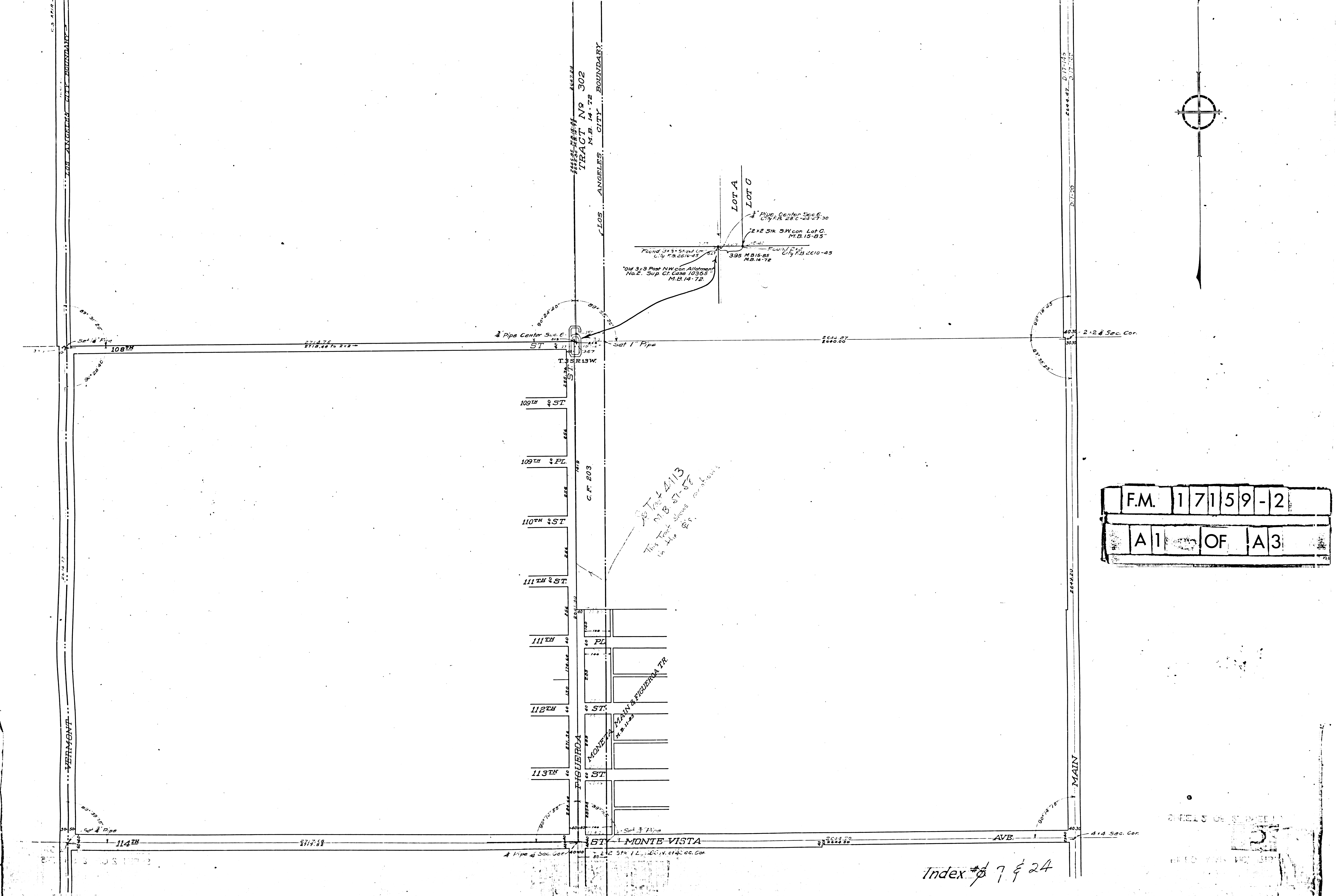


F.M. 17159-2
 A1 OF A3

TRACT NO 302
 M.B. 14-72
 LOS ANGELES CITY BOUNDARY

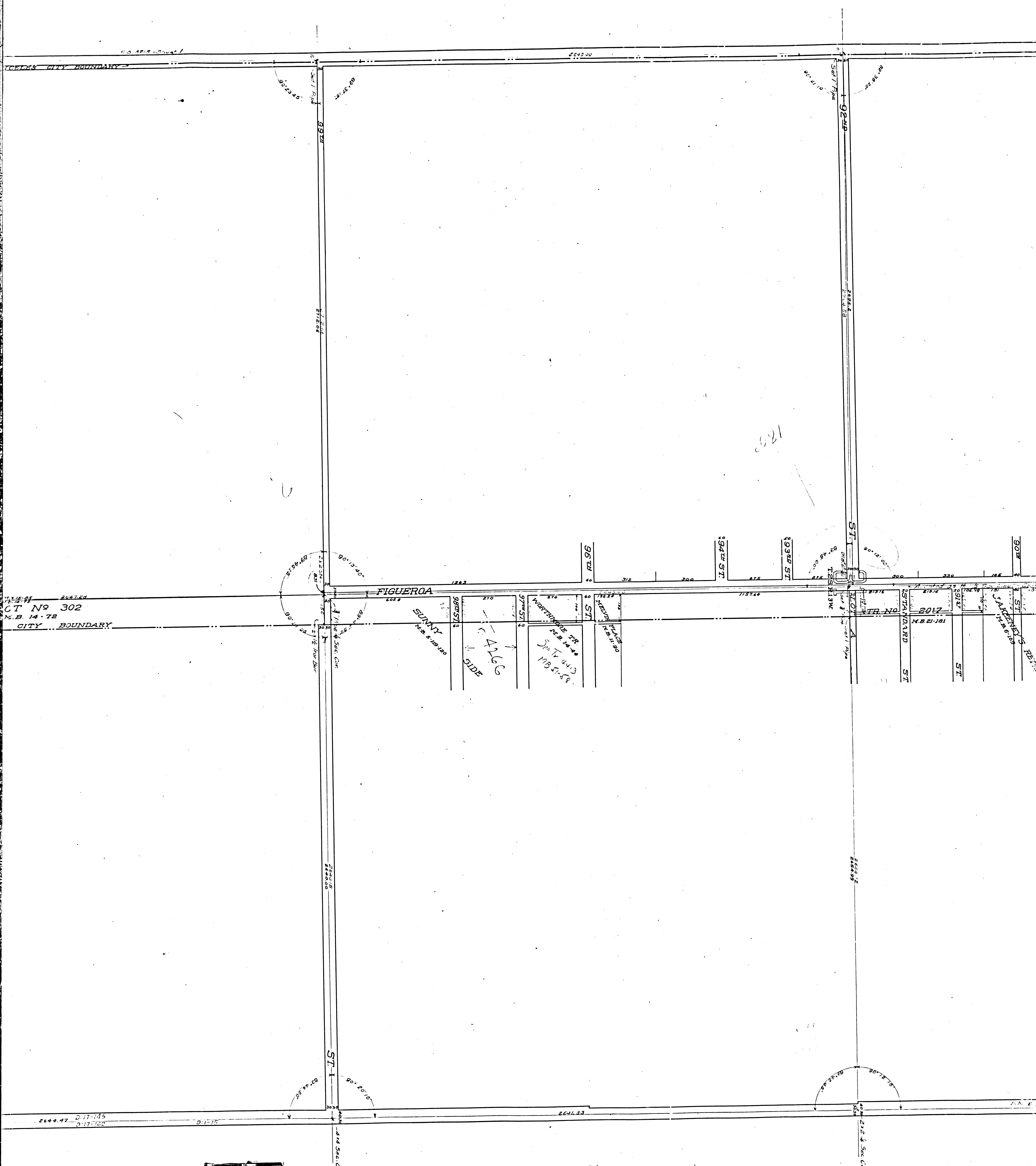


Tract 4113
 M.B. 51-52
 This Tract Shows
 in Title 1925



Index # 7 & 24

RECORDS OF SURVEY
 27
 FILED IN THE RECORDS



CT No 302
M.B. 14-72
CITY BOUNDARY

F.M. 1171159-2
A 2 OF A 3

MAP SHOWING LOS ANGELES CITY BOUNDARIES

BETWEEN MANCHESTER AVENUE & 114TH STREET

COMPILED FROM COUNTY RECORDS AND FROM THE FINAL BOUNDARY SURVEY OF SAN PEDRO ANNEX CITY FIELD BOOKS 2810 & 2810 September 1914 I.B. Noble County Surveyor SCALE 200 FEET TO 1 INCH

For Copy of City Field Notes from which this map was made see C.S. F.B. 60-1 to 17.

Index 7824

Note:-
County Record
City
Computed Dist



MAP SHOWING
CITY BOUNDARIES
 BETWEEN
 MANCHESTER AVENUE & 114TH STREET
 COMPILED FROM
 COUNTY RECORDS
 AND FROM THE
 BOUNDARY SURVEY OF SAN PEDRO ANNEX
 CITY FIELD BOOKS 2810 & 2610
 September 1914 I. B. Noble County Surveyor
 SCALE 200 FEET TO 1 INCH
 of City Field Notes from which this map was made see C.S.F.B. 60-1107.
 Index **7824**

Note:-
 County Record Data Shown in Black
 City " " " Vermillion
 Computed Distances " " Green

F.M. 17159-12
 A 3RD OF A 3

Index 7824