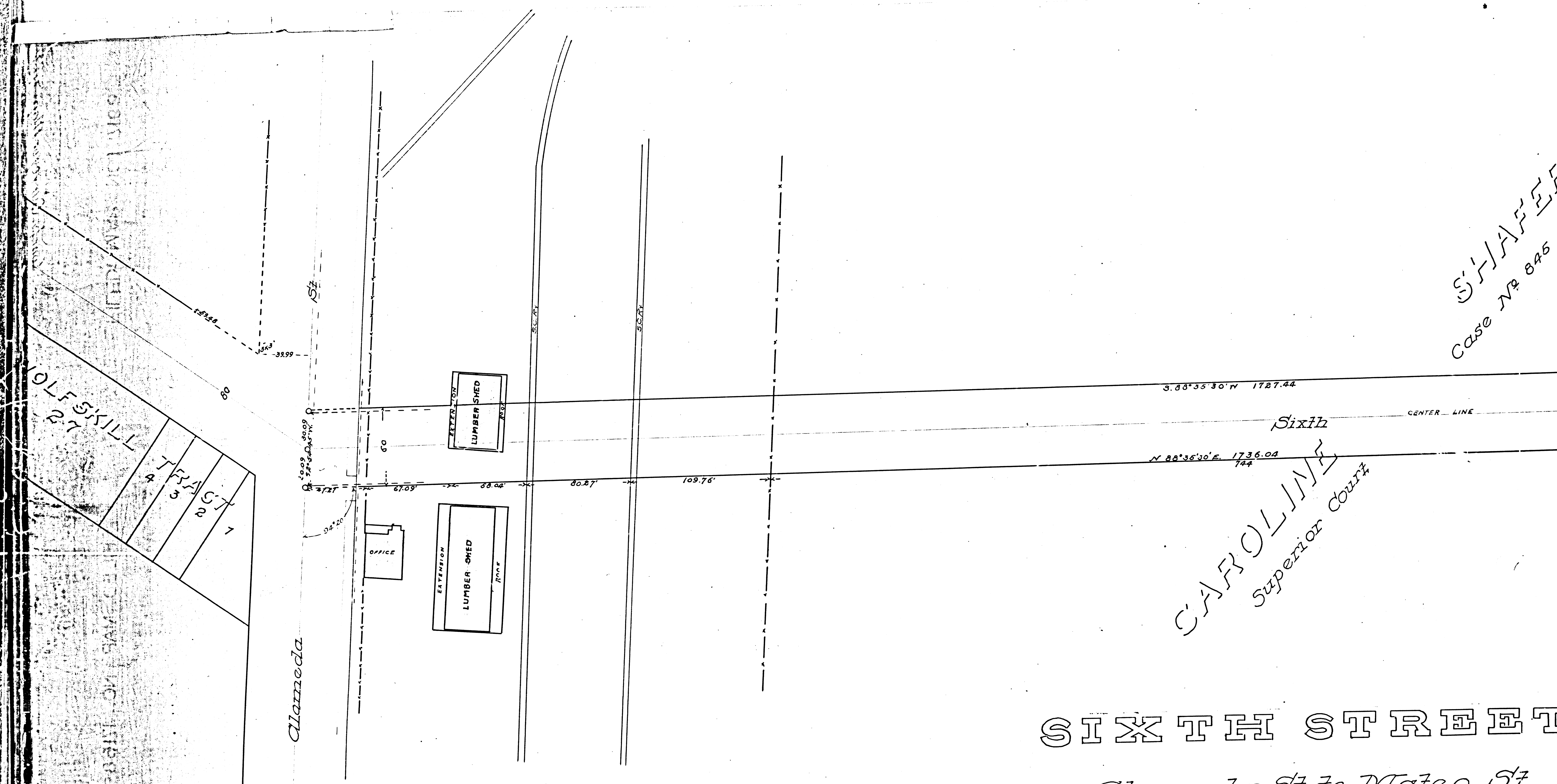


SHAFER
Case No. 845



CAROLINE
Superior Court

SIXTH STREET

Alameda St to Mateo St
IM 9

F.M.	1	7	1	6	8
A	1	OF	A	2	

SHAFER
Case No. 846

80°35'30"W 1727.84

Sixth

CENTER LINE

St

35°30'E 1736.04
144'

256.78

342.83

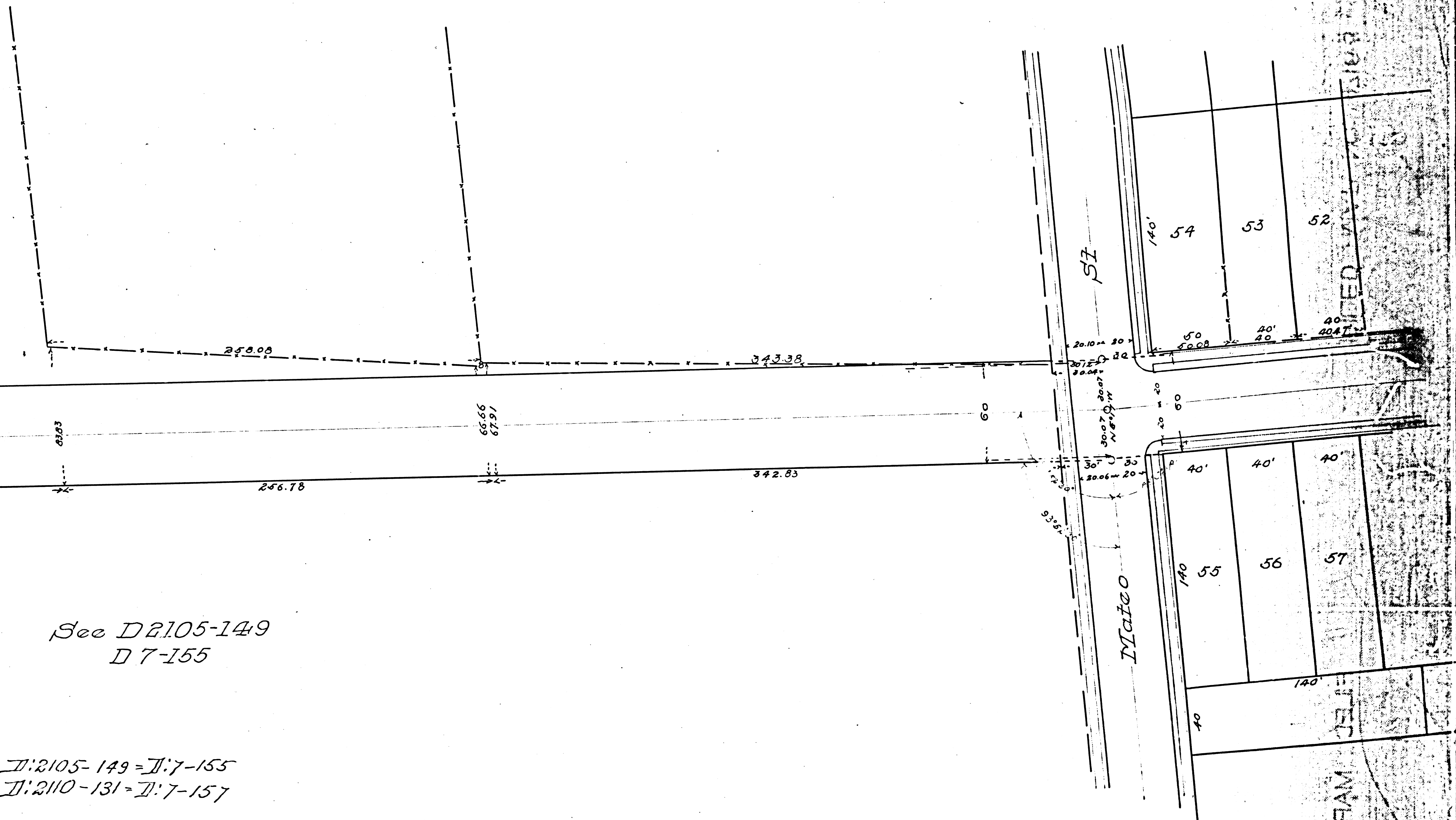
CAROLINE
Superior Court

See D2105-149
D 7-155

D:2105-149 = D:7-155
D:2110-131 = D:7-157

TH STREET

Meda St to Mateo St
IM 9



F.M.	1	7	1	6	8
A	2	OF	A	2	

PLAT NO. 1162
PLAT NO. 1163
PLAT NO. 1164