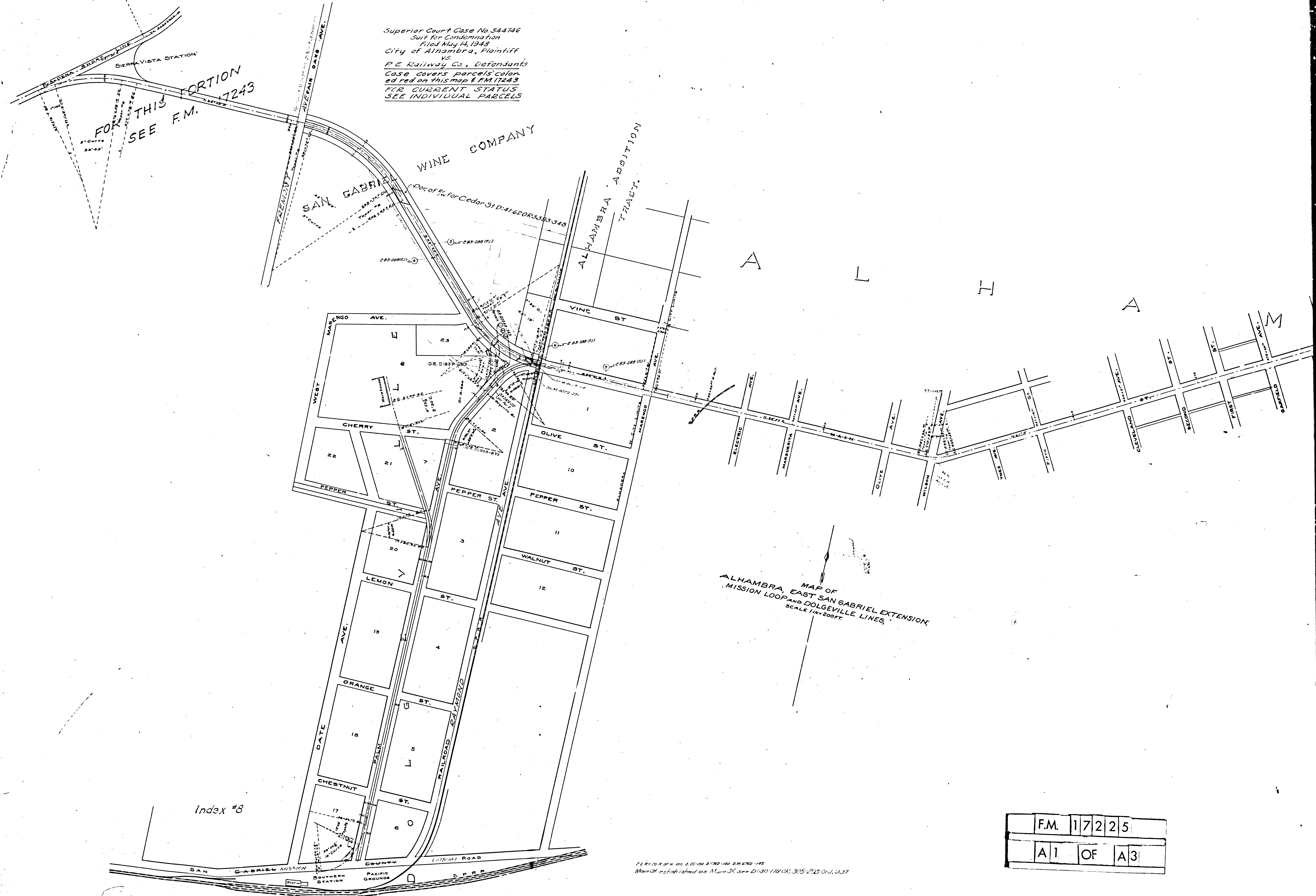


Superior Court Case No. 544746  
 Suit for Condemnation  
 Filed May 14, 1949  
 City of Alhambra, Plaintiff  
 vs.  
 P.E. Railway Co., Defendants  
 Case covers parcels color-  
 ed red on this map & F.M. 17243  
 FOR CURRENT STATUS  
 SEE INDIVIDUAL PARCELS

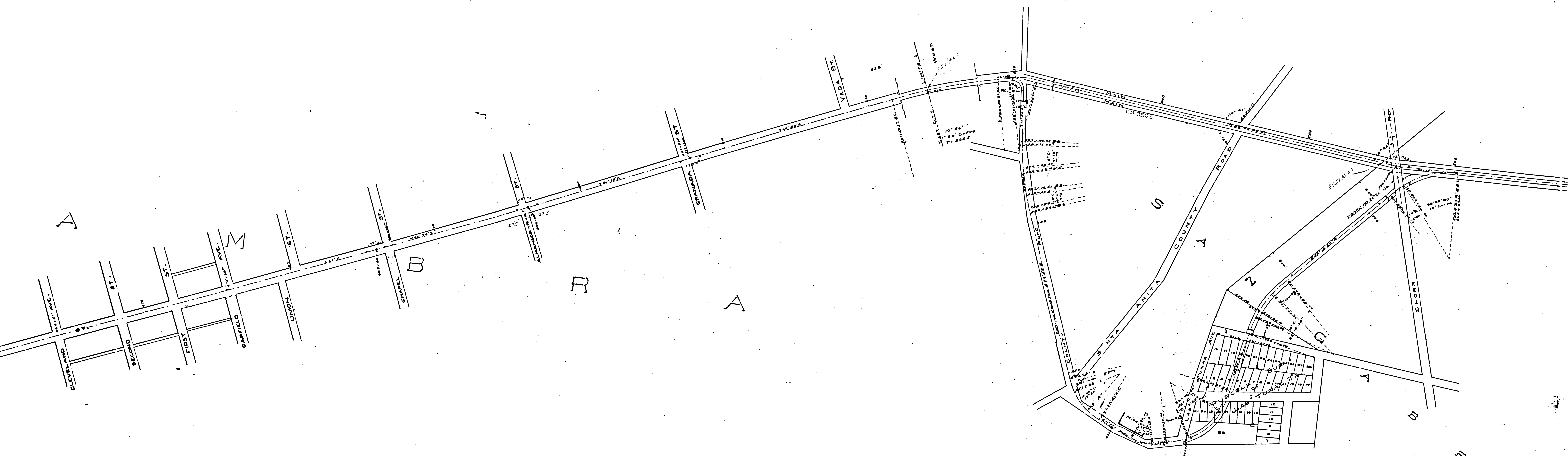


Index #8

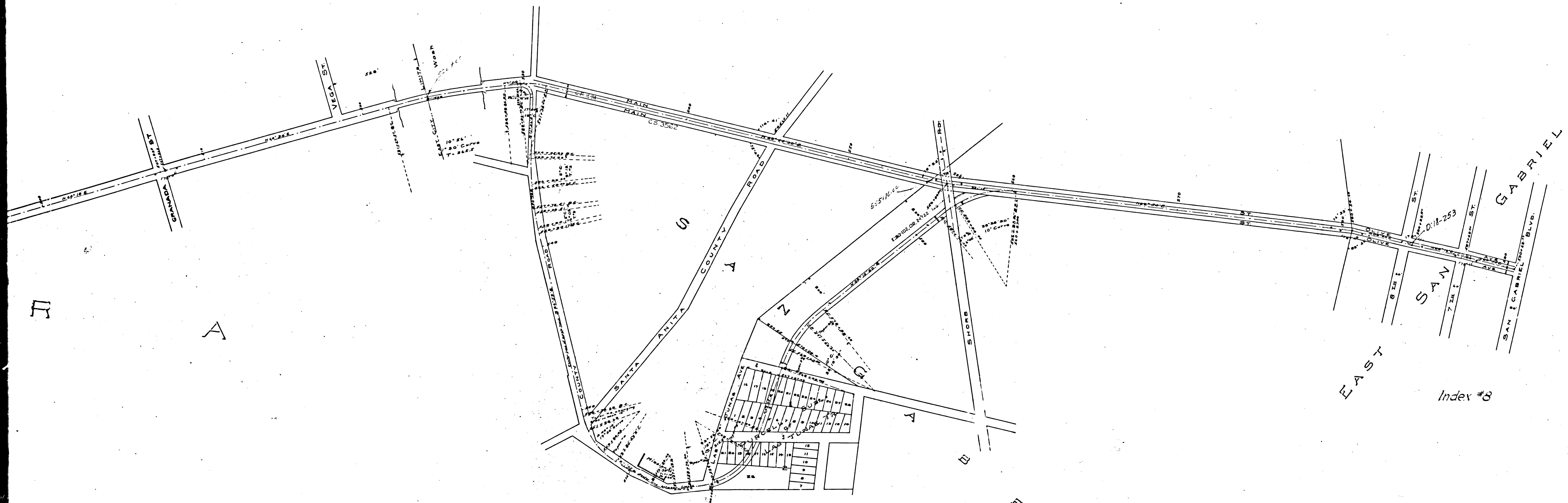
MAP OF  
 ALHAMBRA, EAST SAN GABRIEL EXTENSION,  
 MISSION LOOP AND DOLGEVILLE LINES,  
 SCALE 1" = 200 FT.

F.M.	17225
A1	OF A3

P.E. RY. CO. OF W. NO. 0-25-100 & 0-25-100 0-25-100  
 Map No. established as Map No. 1, see D:30 178 OR. 305-205 0-1, 0-37



F.M.	1	7	2	2	5
A	2	OF	A	3	



Index #8

F.M.	172	25
A3	OF	A3