

NO 11 AM 1906

# MAP SHOWING SURVEY OF PROPOSED HUNTINGTON DRIVE

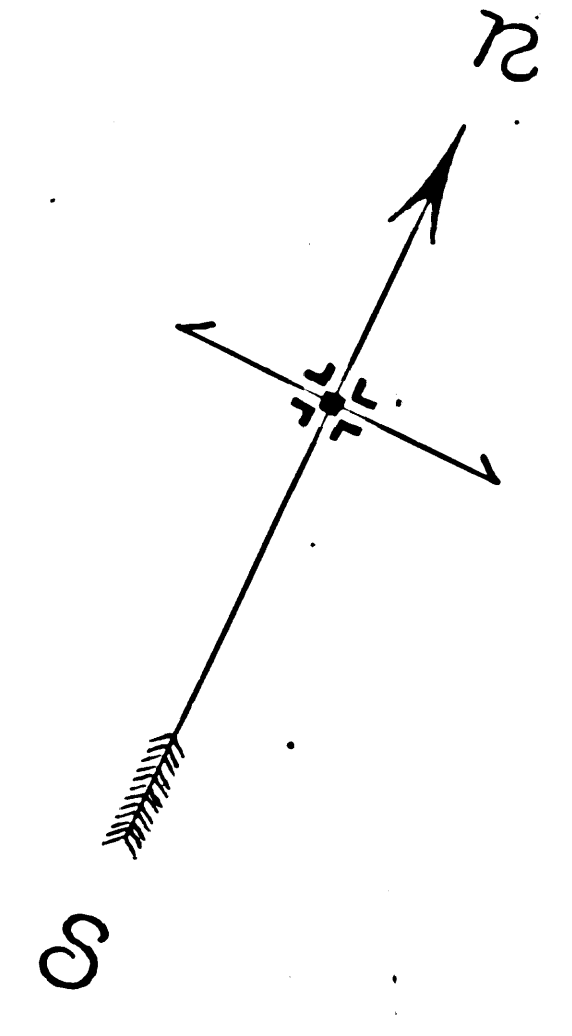
FROM ALHAMBRA ROAD  
FARMDALE AVE. TO FAIR OAKS AVE.  
Being Portions of  
Sections 8, 17 & 18 T. 1 S. R. 12 W. S. B. M.  
LOS ANGELES CO., CAL.  
Scale 1"=100 ft.

True Courses. May 17<sup>th</sup> 1906.  
Fremont Ackerman, C.E.

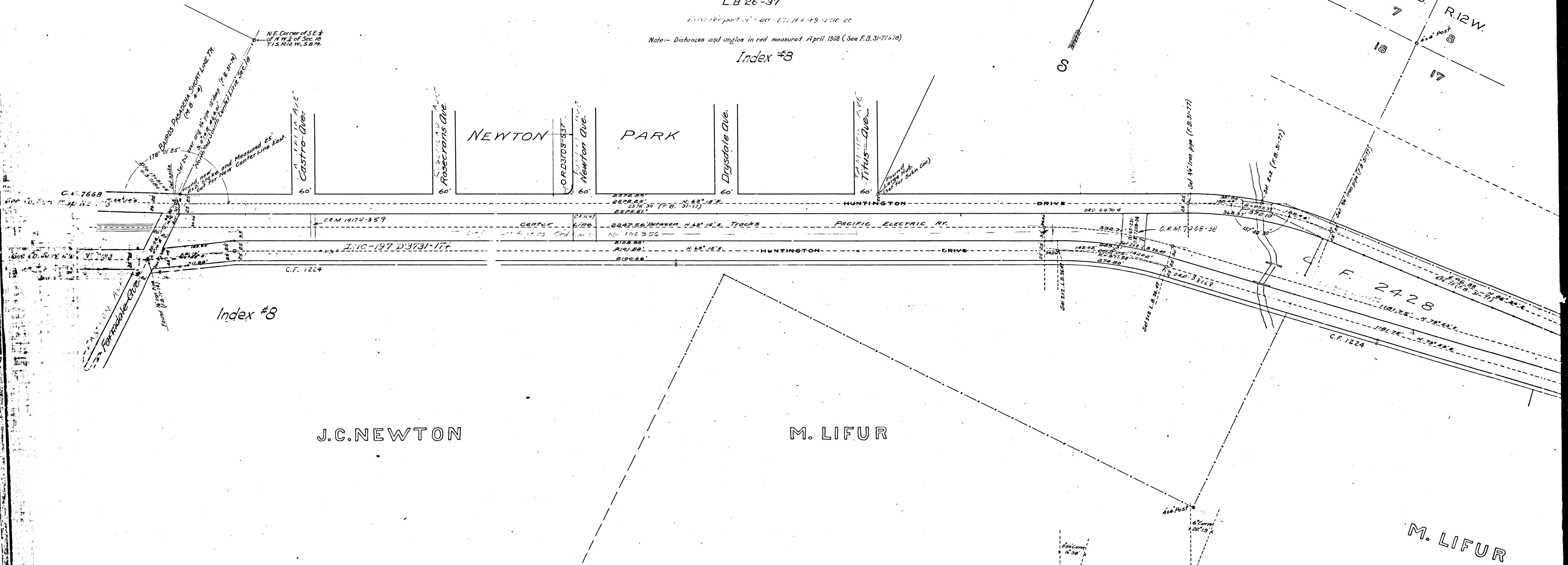
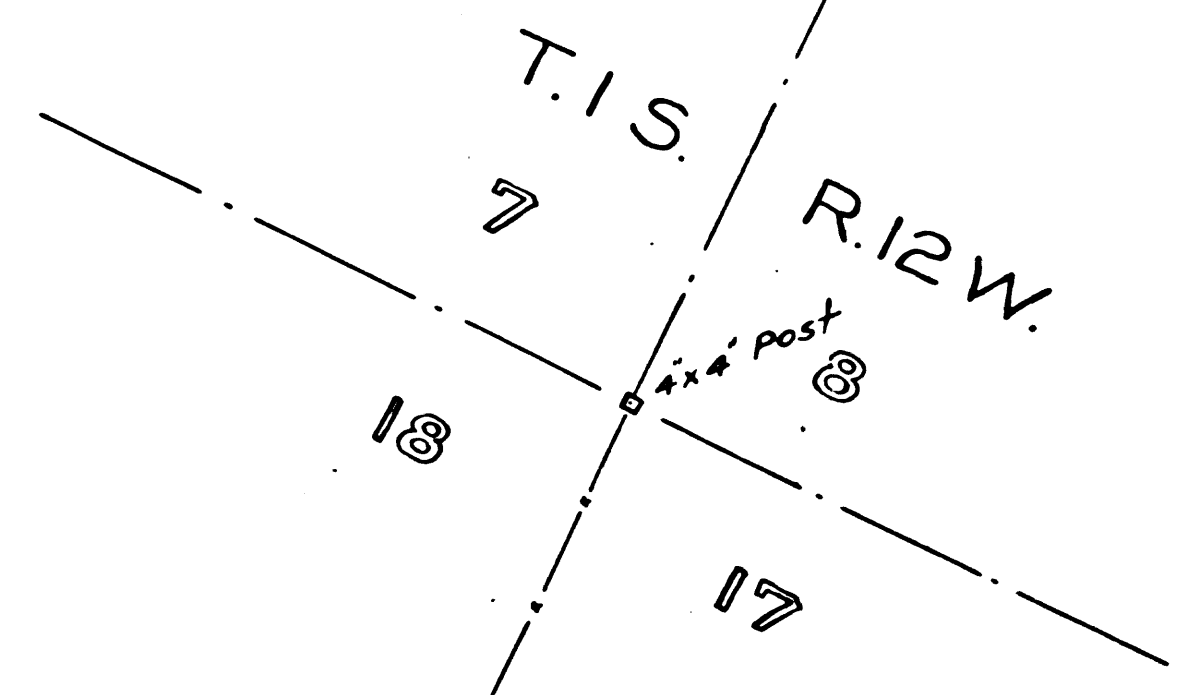
Note: Actual distances given on curves.  
L.B. 26-37

Note: Distances and angles in red measured April 1908 (See F.B. 31-77 & 78)

Index #3



J.C. NEWTON



Index #8

J.C. NEWTON

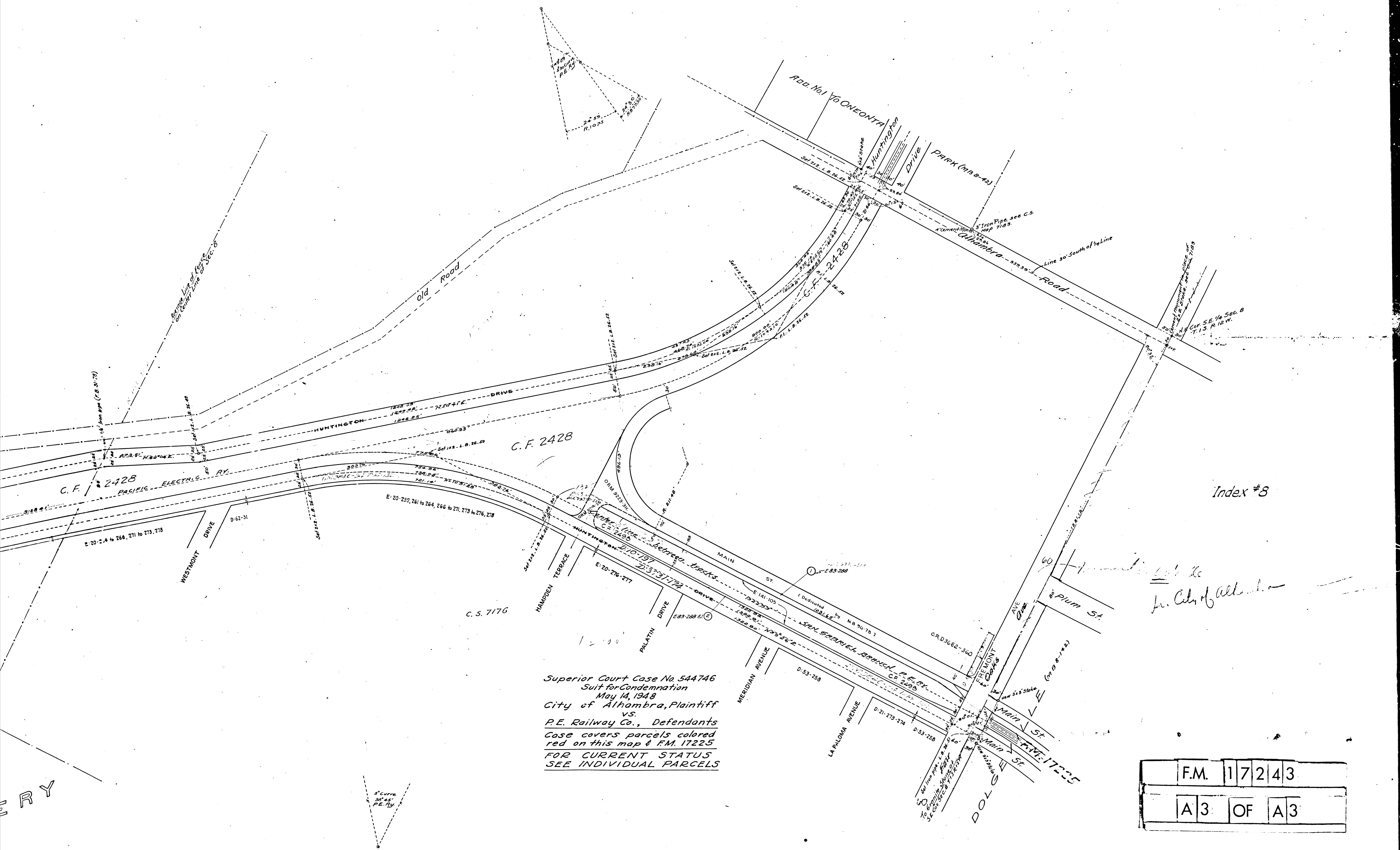
M. LIFUR

M. LIFUR

F.M. 17243  
A1 OF A3

FILED MAP NO. 11, 1906





Superior Court Case No. 544746  
 Suit for Condemnation  
 May 14, 1948  
 City of Alhambra, Plaintiff  
 vs.  
 P.E. Railway Co., Defendants  
 Case covers parcels colored  
 red on this map & FM. 17225  
 FOR CURRENT STATUS  
 SEE INDIVIDUAL PARCELS

F.M.	17243
A3	OF A3

RY

LN