

RANCH

SAN MARINO

RANCH

WINSTON

INDEX 44

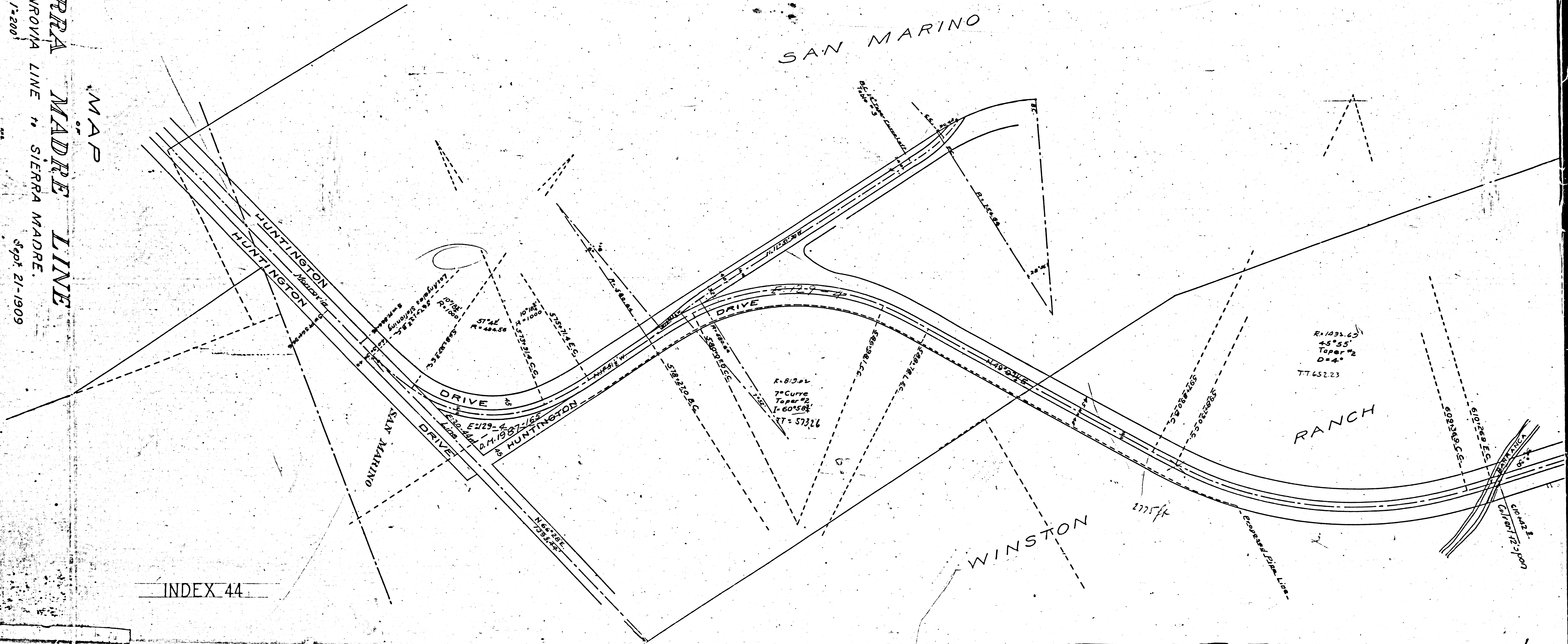
F.M.	1	7	2	7	1
A	1	OF	A	6	

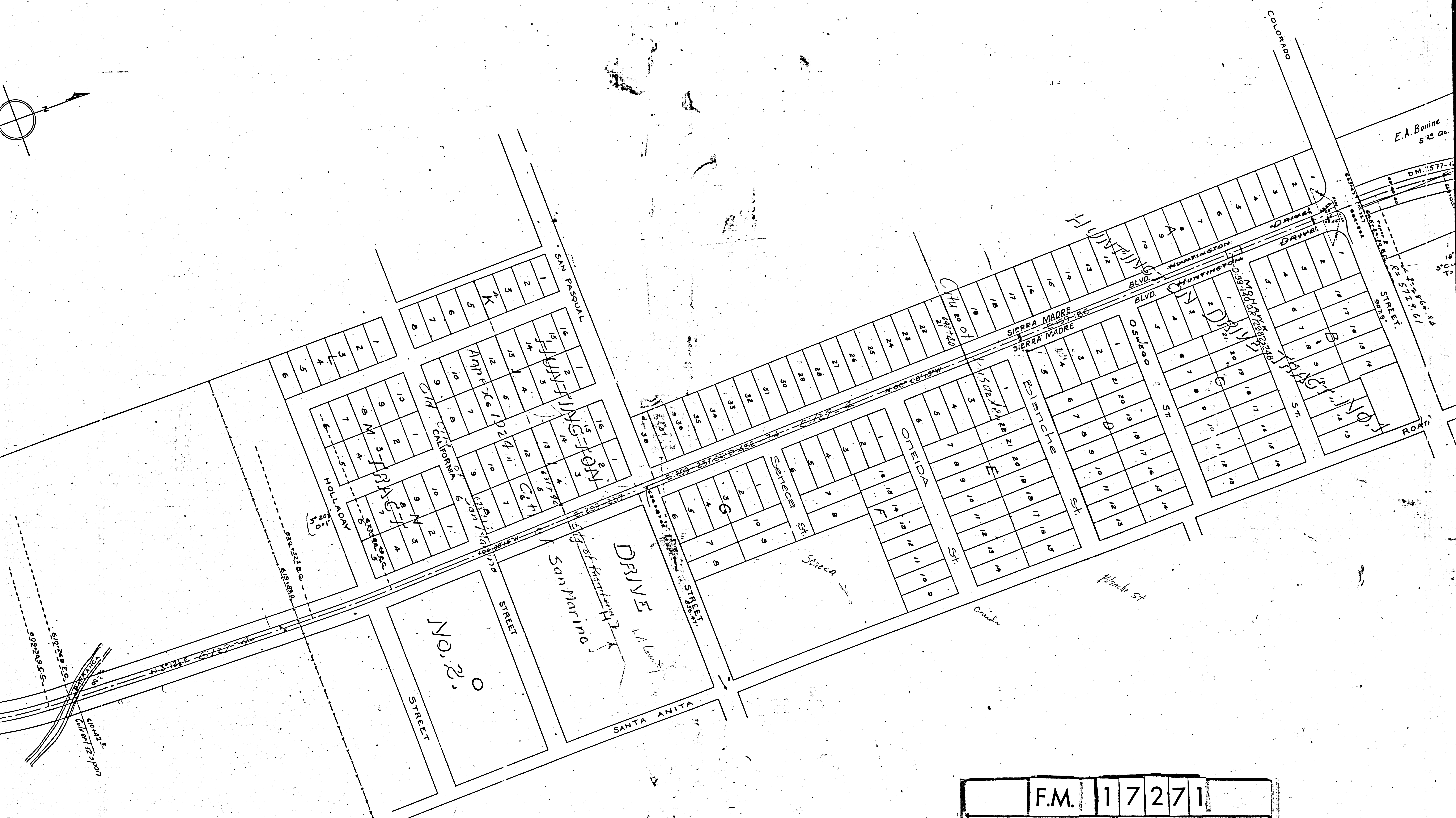
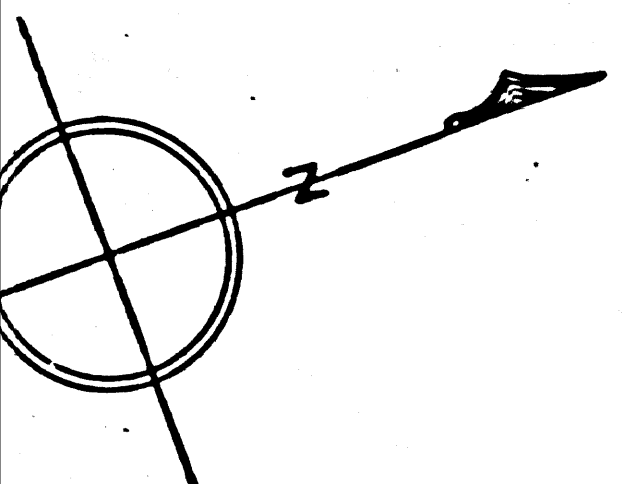
MAP

SIERRA MADRE LINE

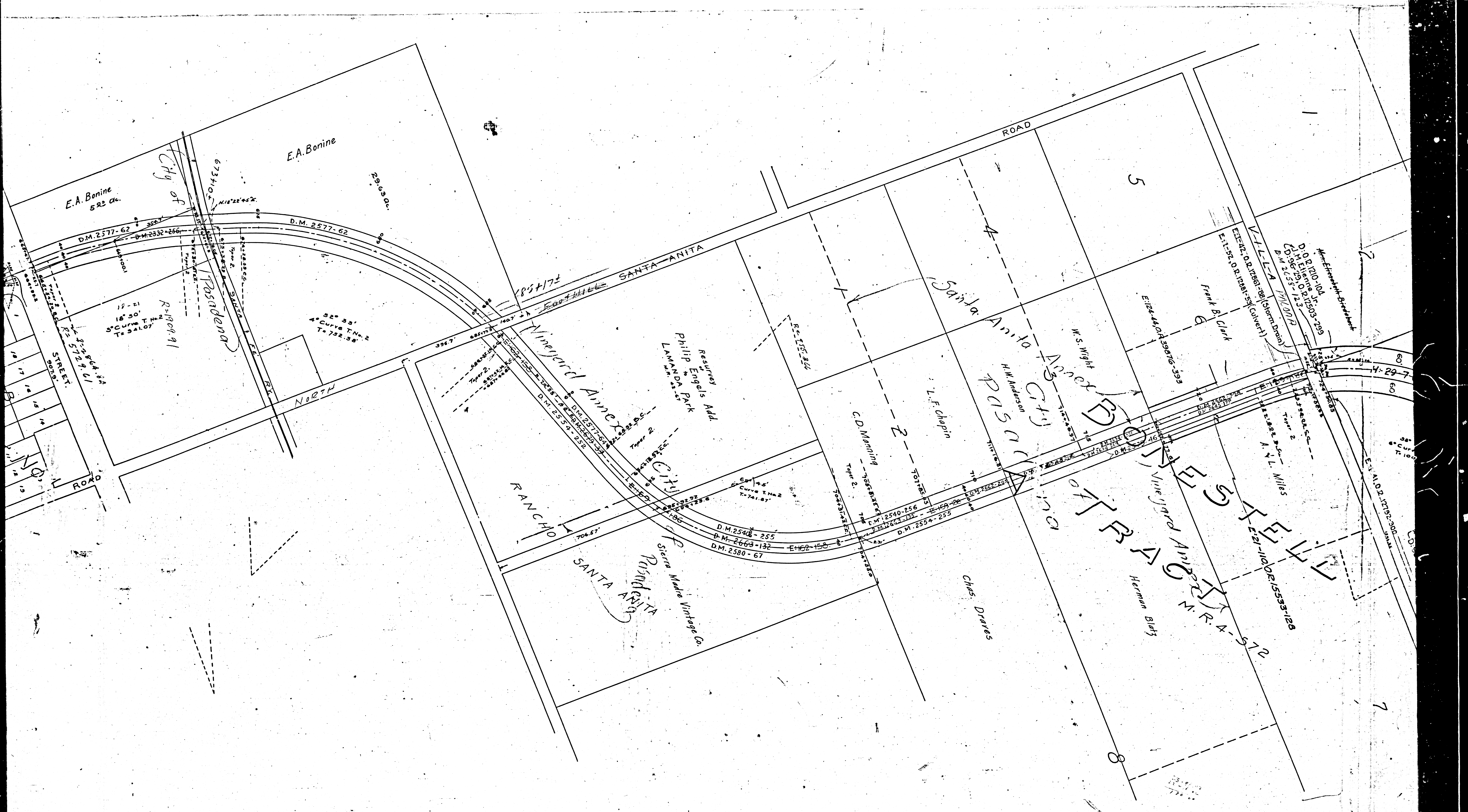
From MONROVIA LINE to SIERRA MADRE
Scale 1" = 200'

For Huntington Dr changed to Sierra Madre Blvd - E: 10-7-01-d-3262
Sept 21-1909

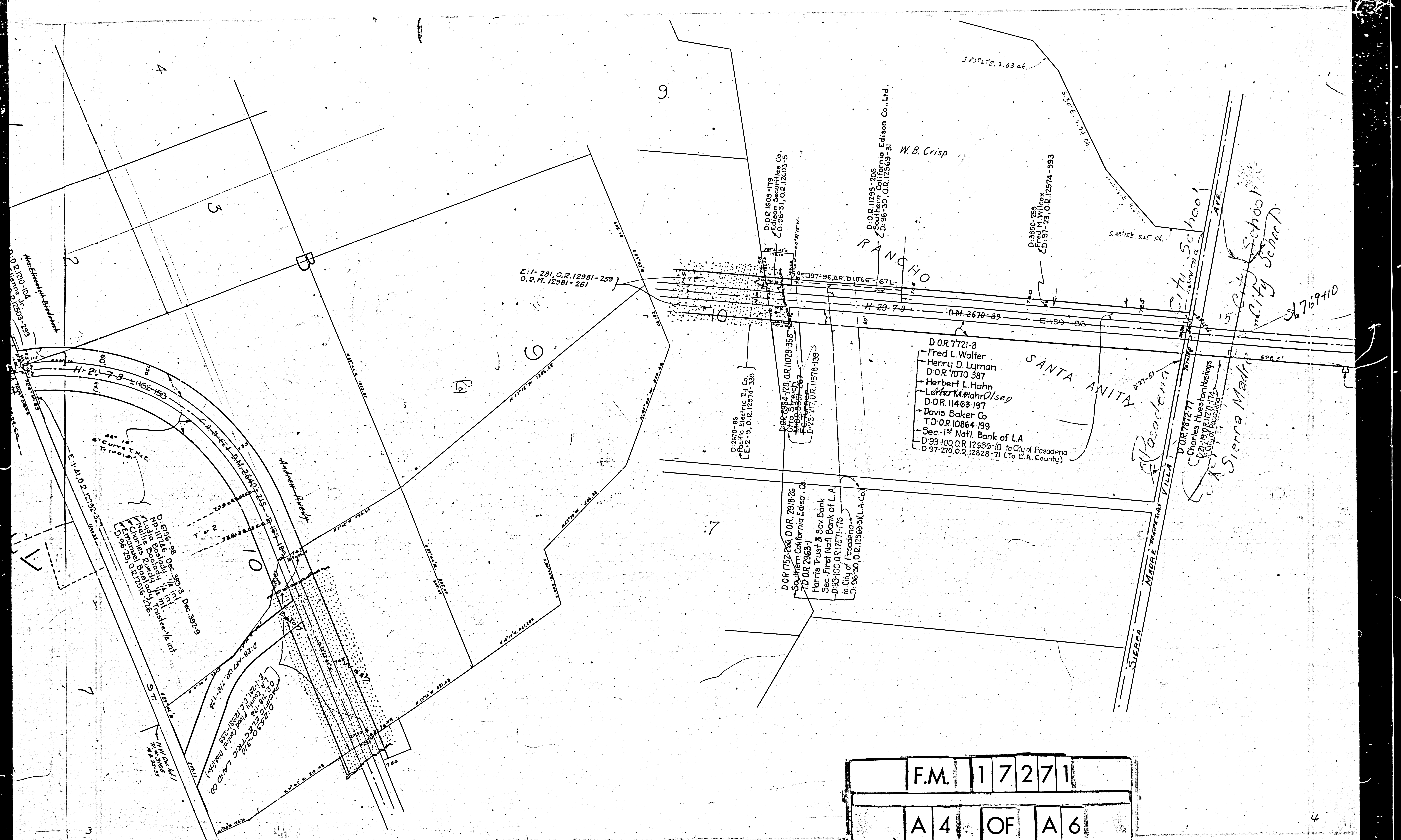




F.M.	1	7	2	7	1
A	2	OF	A	6	



F.M.	1	7	2	7	1
A	3	OF	A	6	



F.M. 17271

A 4 OF A 6

E: 1-281, O.R. 12981-259
O.R.M. 12981-261

W.B. Crisp

RANCHO

SANTA ANITA

Pasadena

Sierra Madre

- D.O.R. 7721-3
- Fred L. Walter
- Henry D. Lyman
- D.O.R. 7070-387
- Herbert L. Hahn
- L.A. Mahr/sep
- D.O.R. 11463-197
- Davis Baker Co
- T.D.O.R. 10864-199
- Sec. 1st Natl. Bank of L.A.
- D-93-100, O.R. 12636-10 to City of Pasadena
- D-97-270, O.R. 12828-71 (To L.A. County)

- D.O.R. 1752-266, D.O.R. 2918-26
- Southern California Edison Co.
- T.D.O.R. 2963-1
- Harris Trust & Sav. Bank
- Sec. First Natl. Bank of L.A.
- D-93-100, O.R. 12571-176
- to City of Pasadena
- D: 96-30, O.R. 12569-31 (L.A. Co.)

- D: 2670-86
- Pacific Electric Ry. Co.
- [E: 12-9, O.R. 12974-339]

- D.O.R. 9984-170, O.R. 1029-356
- Otto Streich
- [E: 12-9, O.R. 12974-339]
- D-23-27, O.R. 11378-139

- D.O.R. 1605-179
- Edison Securities Co.
- [E: 96-51, O.R. 12603-5]

- D.O.R. 11295-206
- Southern California Edison Co., Ltd.
- [E: 96-30, O.R. 12569-3]

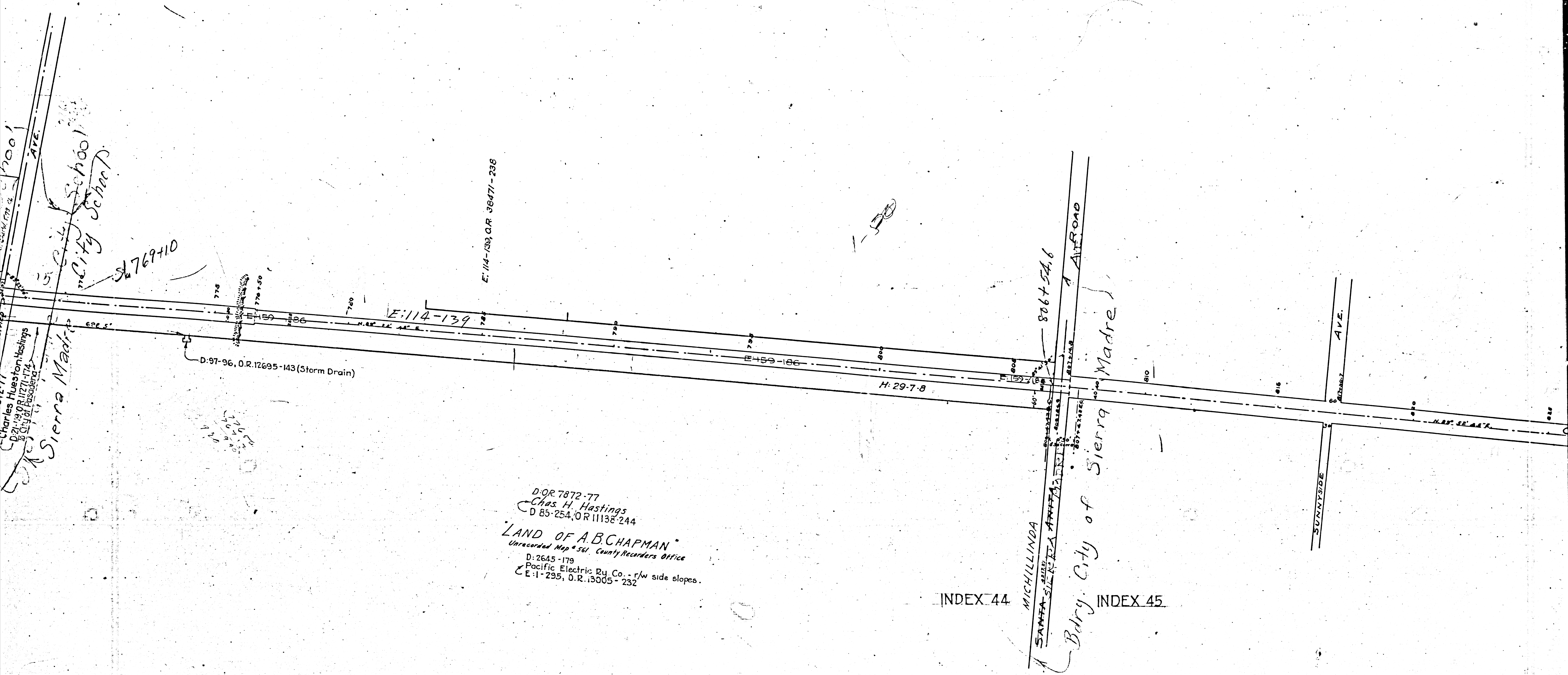
- D: 3850-289
- Fred M. Wilcox
- [D: 97-23, O.R. 12574-393]

- D: 6156-56
- Dec. 3-39-3
- Dec. 3-39-3
- Trust Sec. 1/4 Int.
- W. A. ...
- ...

- D: 228-1477-02
- 718-174
- ...

- D.O.R. 7872-71
- Charles Hueston Hastings
- [E: 99-11271-174]
- to City of Pasadena

St 7169+10



E: 114-139, O.R. 36471-238

D: 97-96, O.R. 12695-143 (Storm Drain)

E: 114-139

E: 159-186

H: 29-7-8

806454.6

D: 97-7872-77
 Chas. H. Hastings
 D: 85-254, O.R. 11138-244
LAND OF A.B. CHAPMAN
 Unrecorded Map # 561, County Records Office
 D: 2645-179
 Pacific Electric Ry. Co. - r/w side slopes.
 E: 1-295, O.R. 13005-232

INDEX 44

INDEX 45

F.M.	1	7	2	7	1
A	5	OF	A	6	