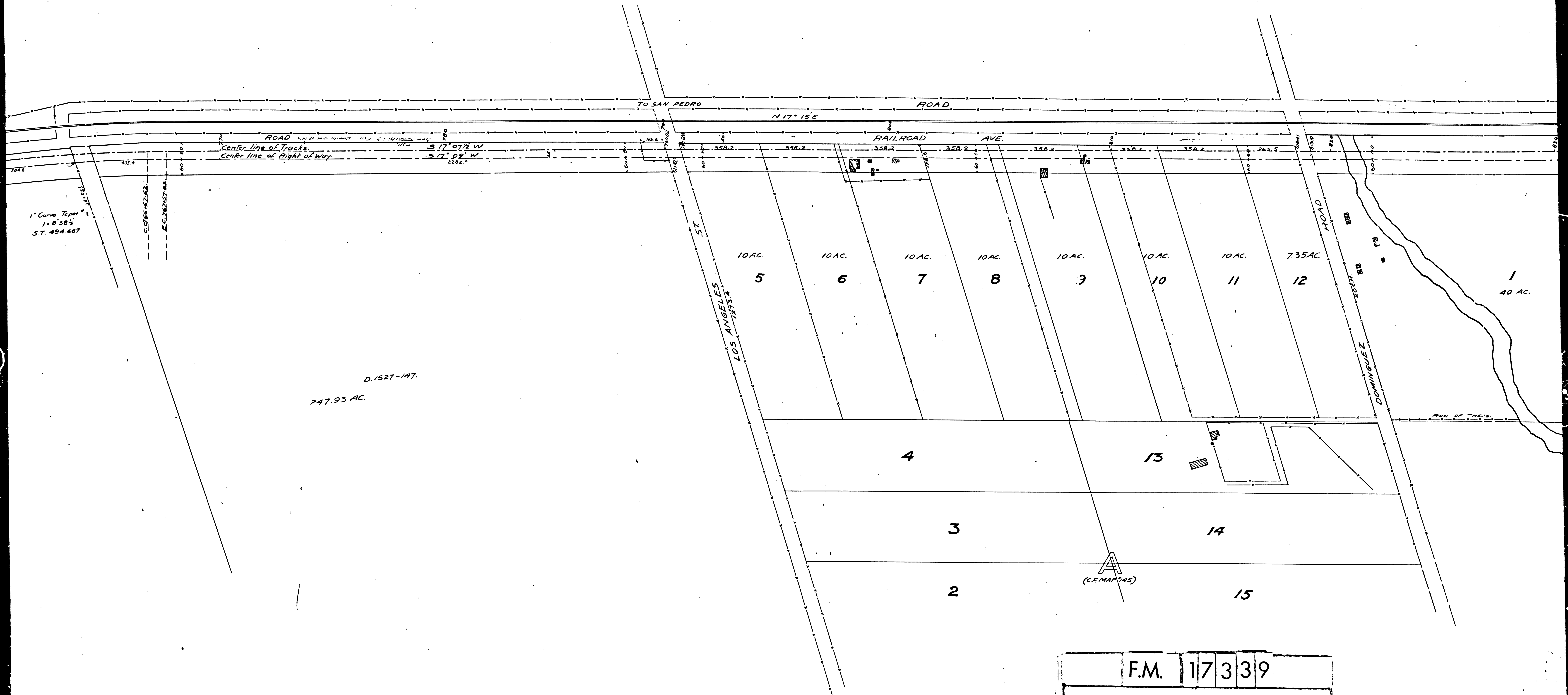


MAP  
OF  
**SAN PEDRO LINE**  
From Dominguez to San Pedro.  
Scale: 200 to One Inch.  
Sept. 21-1909

Los Angeles St. changed to Del Amo St. D: 10-33 R. B. 40-122

11/25  
11/29  
11/30

F.M.	1	7	3	3	9
A	1	OF	A	9	



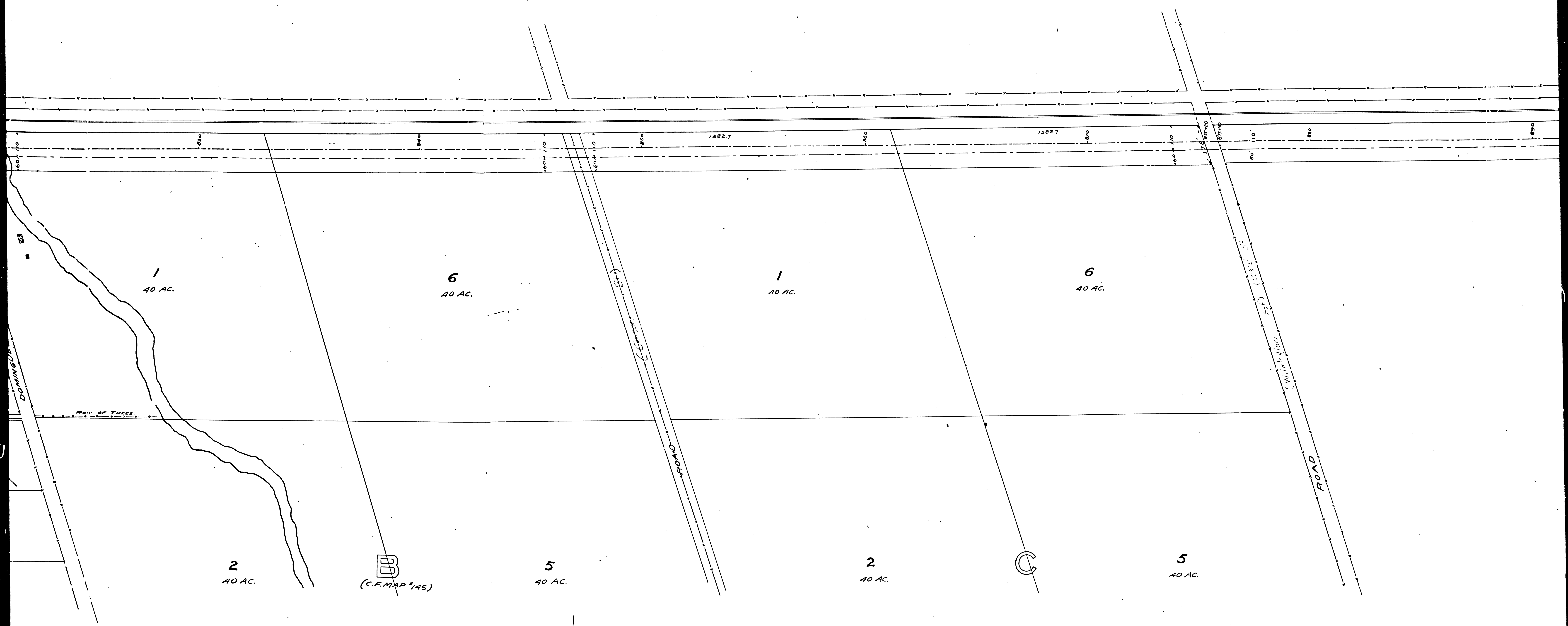
1" Curve 7e per  
 1 = 0' 58 1/2"  
 S.T. 494.667

ROAD  
 Center line of Tracts  
 Center line of Right of Way  
 S 17° 07 1/2' W  
 S 17° 09' W

D. 1527-147.  
 247.93 AC.

(C.F. MAP 145)

F.M.	17	339
A 2	OF	A 9

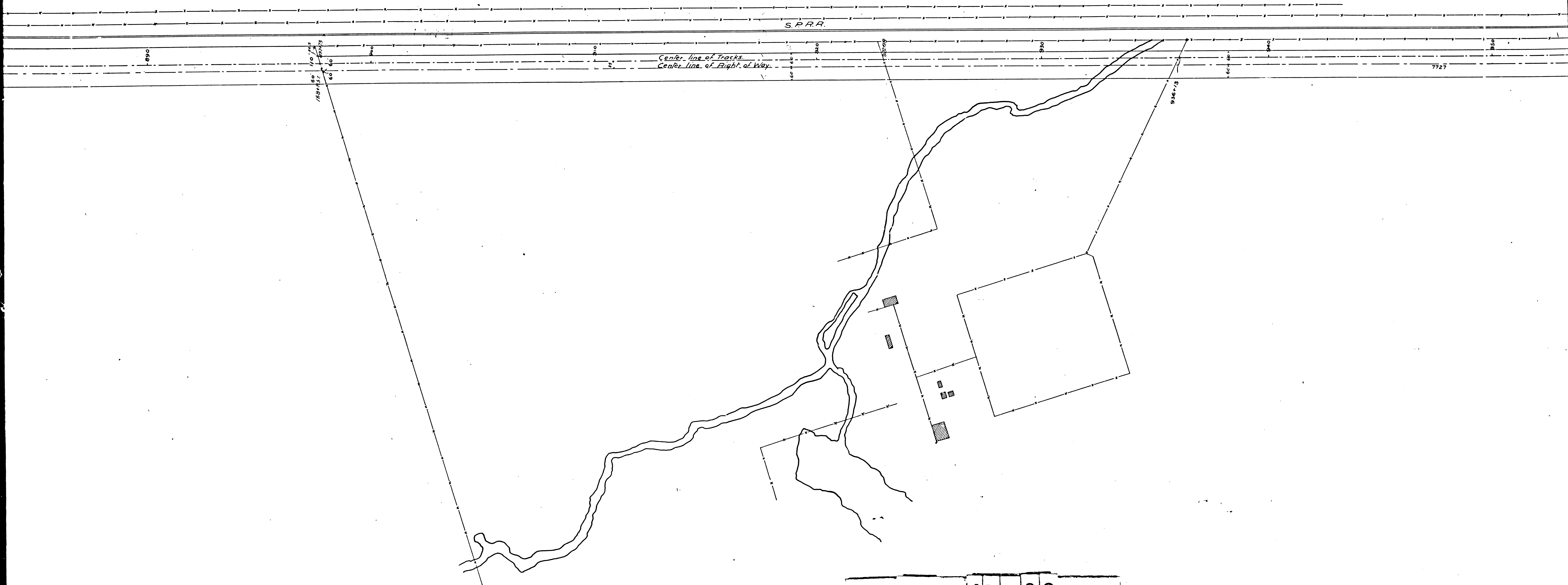


F.M.	17	339
A	3	OF A 9

2

3

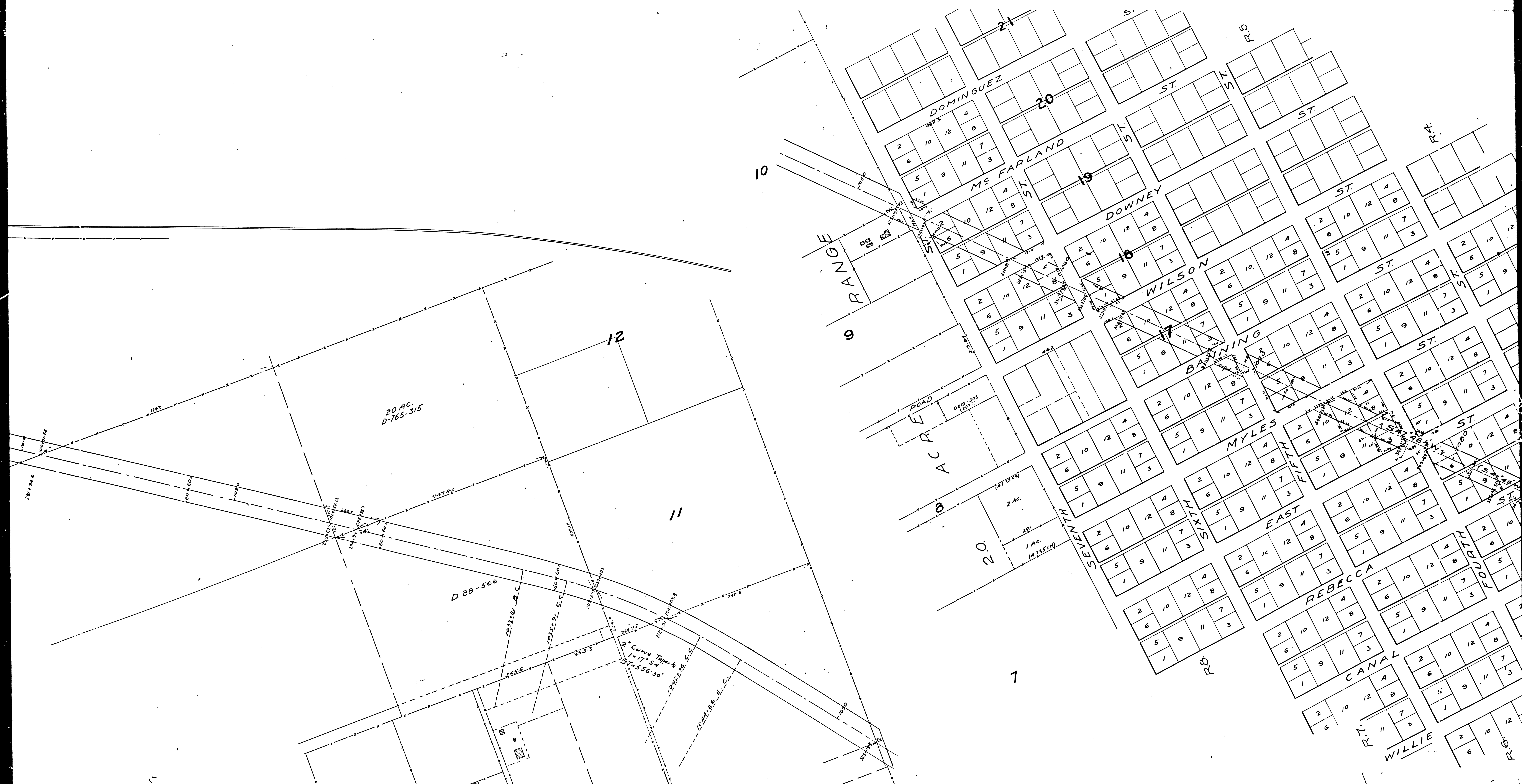




F.M.	1	7	3	3	9
A	4	OF	A	9	

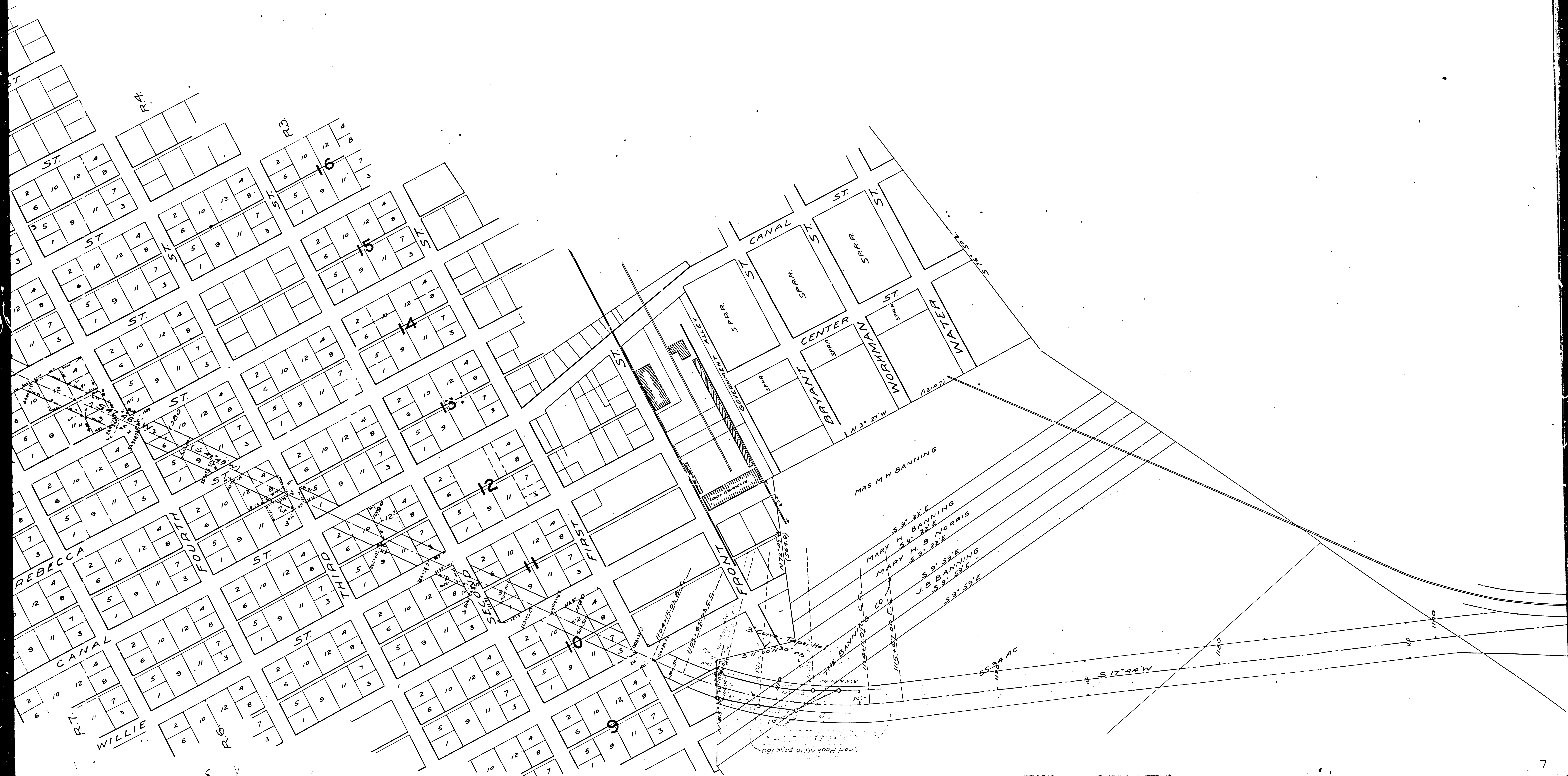




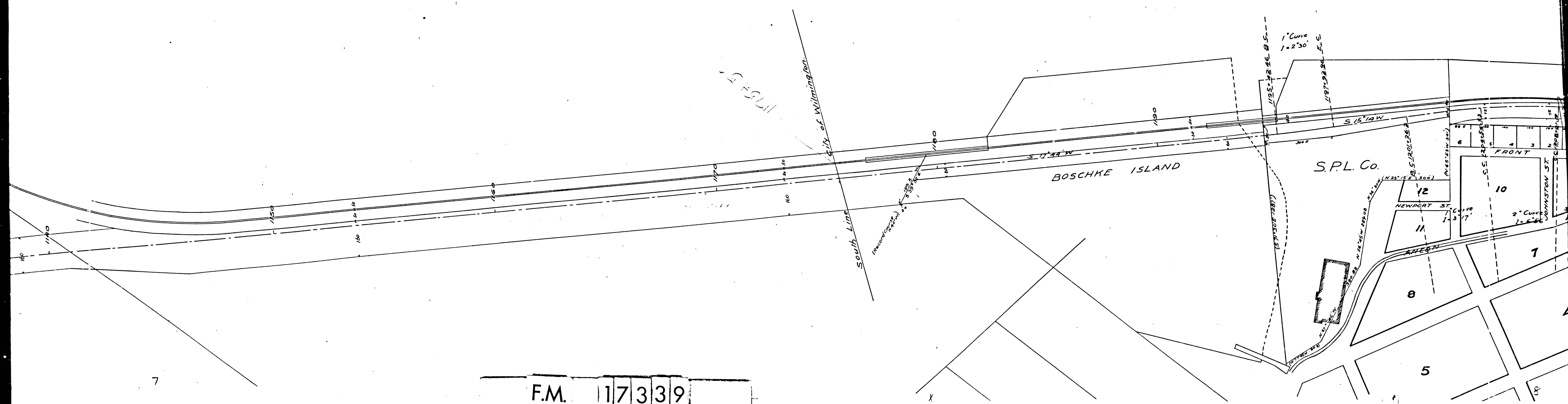


F.M.	1	7	3	3	9
A	6	OF	A	9	



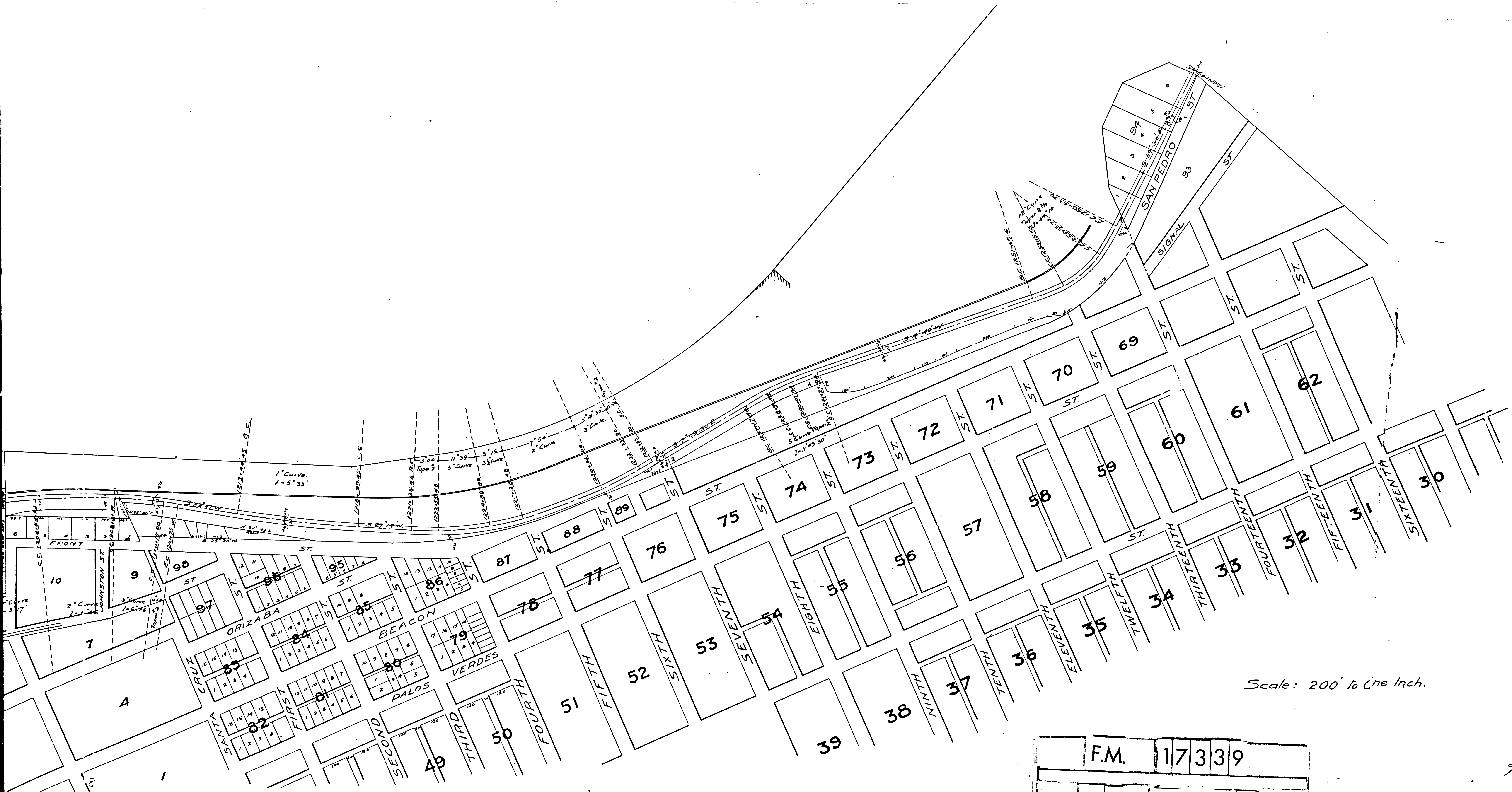


F.M.	17	33	9
A	7	OF	A 9



7





Scale: 200' to One Inch.

F.M.	17	339
A 9	OF	A 9