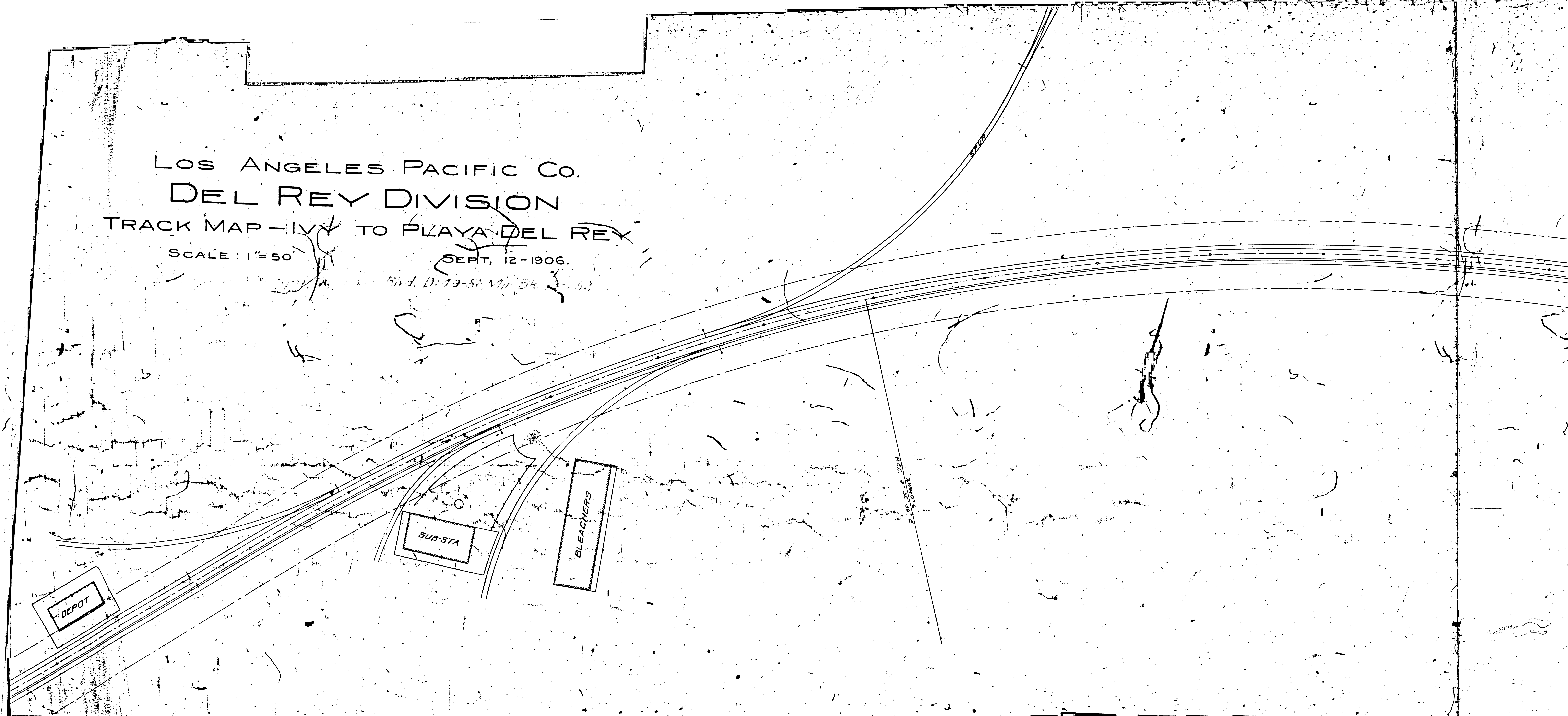


LOS ANGELES PACIFIC CO.
DEL REY DIVISION
TRACK MAP - IVY TO PLAYA DEL REY

SCALE: 1" = 50'

SEPT. 12-1906.

Shd. D: 19-54, 1/2, 5/4, 3/2, 1/2, 1/4



F/M 17510-12
A 11 OF A 15



F/M 17510 12
A 2 OF A 15

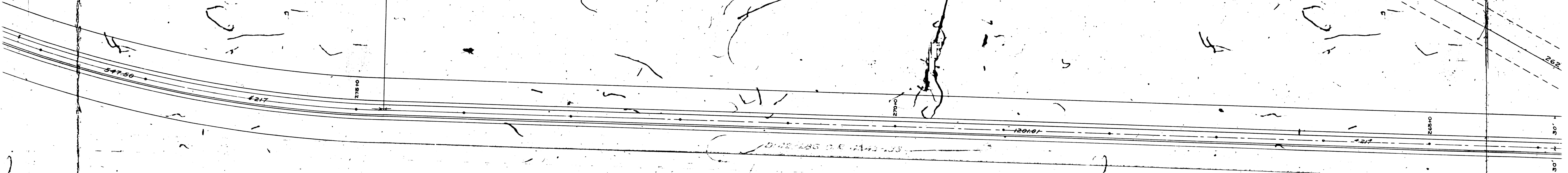
JOSEPH MESMERS EXECUTORS

2744747 BC 5° 00' R.

271945

PLAYA ST. VACATED - see M.F. BK 107 P. 40

262



JOSEPH MESMERS EXECUTORS

F/M 17510 12

A 3 OF A 15

HEIRS OF ANDREW J. W. KEATING

ARCADIA B. DE

AUTOMOBILE

HEIRS OF ANDREW J. W. KEATING

FM 17510 2

A 4 OF A 15

BK 107 P. 40

268+378

251+03 (cont)

783+64 to N.Y. - Line of Keating Estate

1633+143

+ 216

N 33° 32' 30" E

PLAYA ST. vacated - M.P. 107-40

210+375 Des. in M.P. 40+9+265

Line of Auto Blvd as per map in M.P. 107-40

PLAYA ST.

Playa St. changed to Jefferson Blvd. in 288 R.G. 33-2

ARCADIA B. DE BAKER

HEIRS OF ANDREW J. W. KEATING

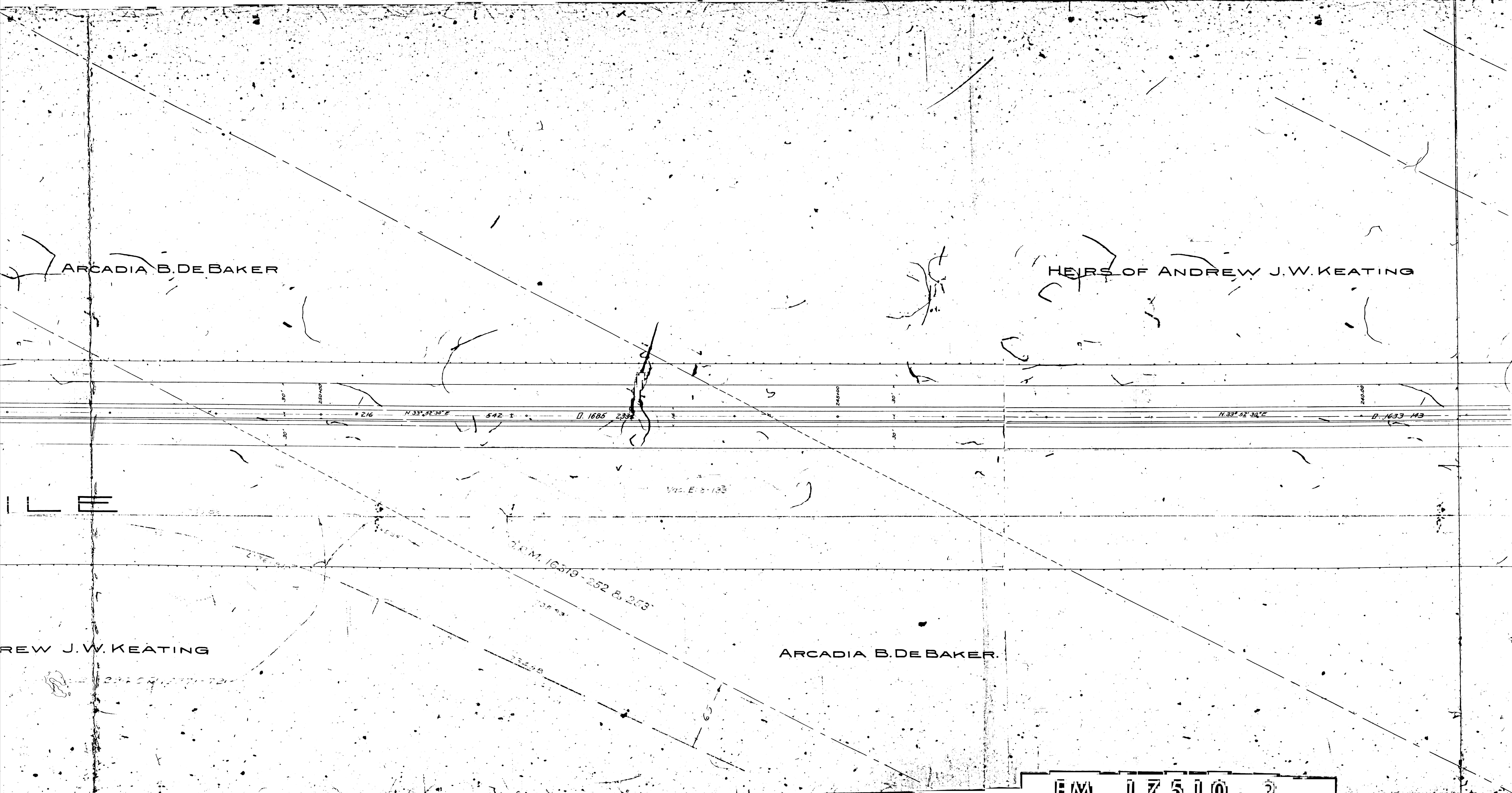
LE

REW J. W. KEATING

ARCADIA B. DE BAKER.

F/M 117510 2

A 5 OF A 15



KEATING

S. M. BERNARD

234-1889 (c66)

OR. M. 16319-72

D-1633-143

#216

#216

N39°52'30"E 270 ±

D-1829-135

B-1633-143

Trestle

Loc. E18-133

SPEED

HEIRS OF ANDREW J W KEATING

S. M. BERNARD

FAX 17510-2

A 6 OF A 15

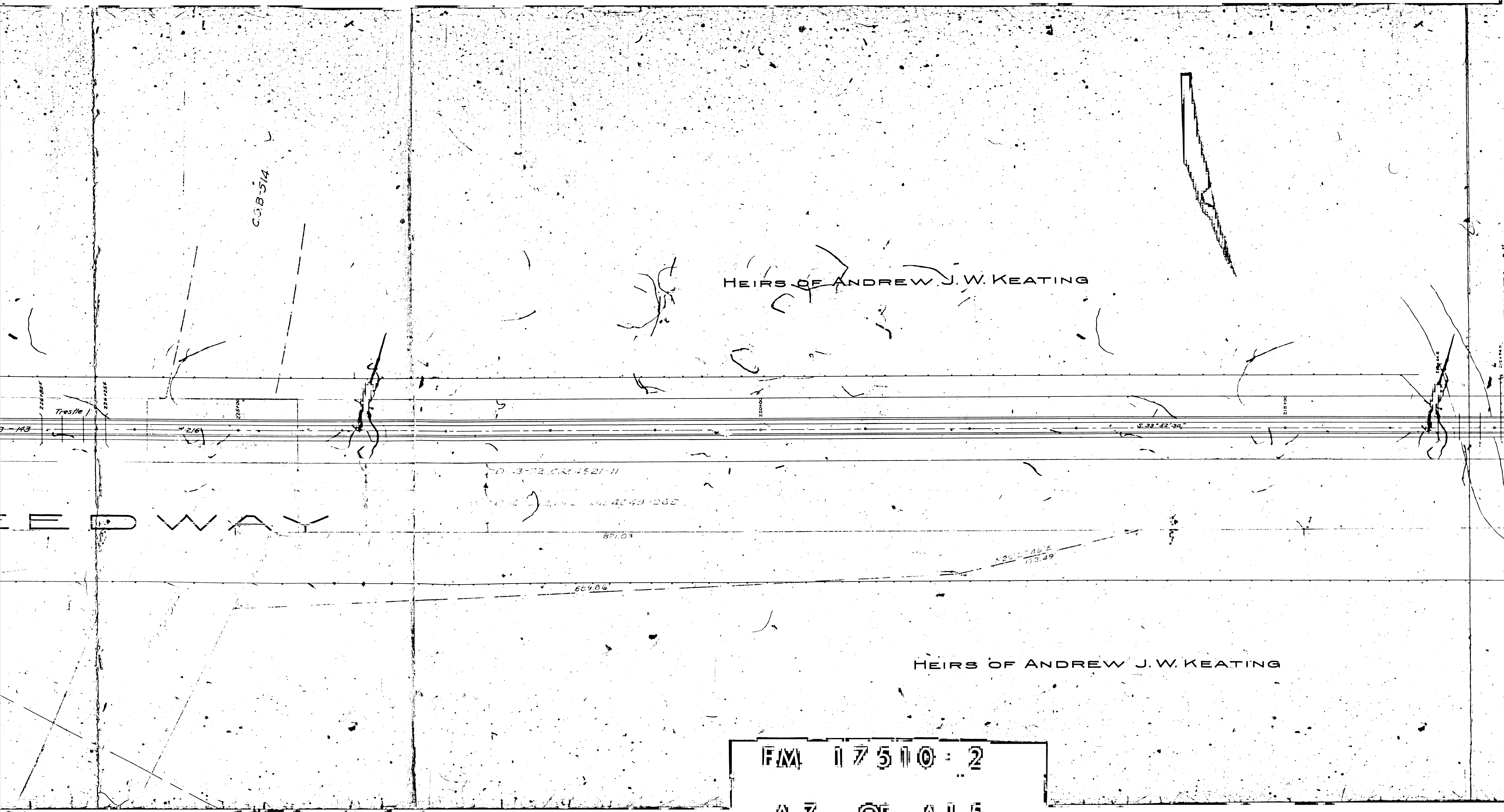
C.O.B. 514

HEIRS OF ANDREW J. W. KEATING

HEIRS OF ANDREW J. W. KEATING

FM 17510-2

A7 OF A15



CENTINELA

LAPCO INGLEWOOD

ALLA

INDISIDIV

SLOUGH

FM 17510-2

A8 OF A15

HE

215-784

216

20900

20986 MB

20976 MB

208100

D10-272, D-66d, BK 4043-265

275

D1633-M3

5.89' 10.32' N 46.57'

3x3 7/16

30'

46.57'

28.3

28.3

204485 MB

HEIRS OF ANDREW J. W. KEATING

PANAMA

AUTOMOBILE

HEIRS OF ANDREW J. W. KEATING

F/M 17510 = 2

A 9 OF A 15

D. 16 266 D. R. 3571-364 M. Chase also signs

D. 1633-143

M. 28 25 30 W

S 54° 32' W

209+454 HIB

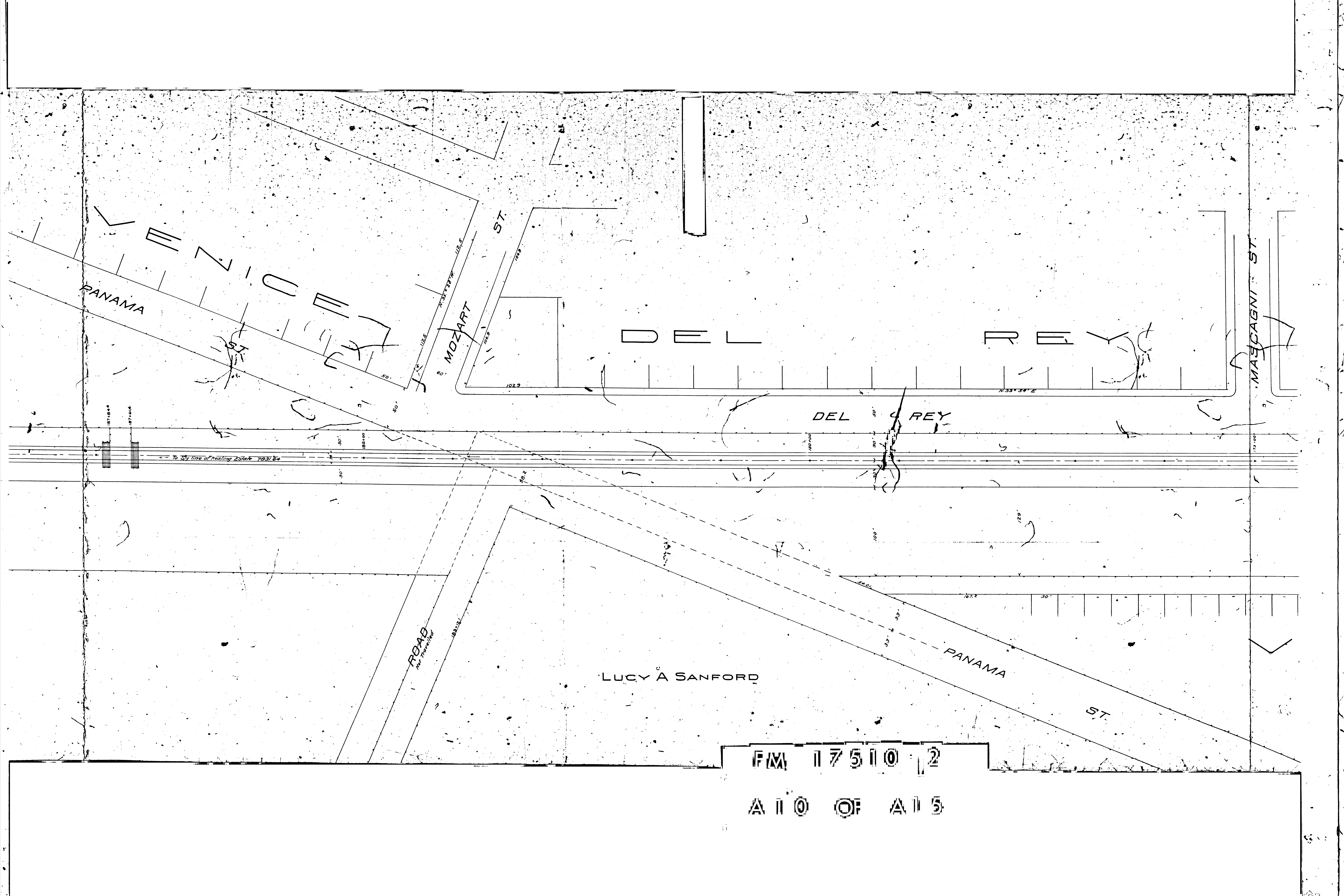
200000

195+000

190000

187+644

187+614



PANAMA

V E N I Z I O

MOZART

ST

D E L

R E Y

MASCAGNI ST

DEL REY

To Sky line of Healy Estate 7831 E.

ROAD

LUCY A SANFORD

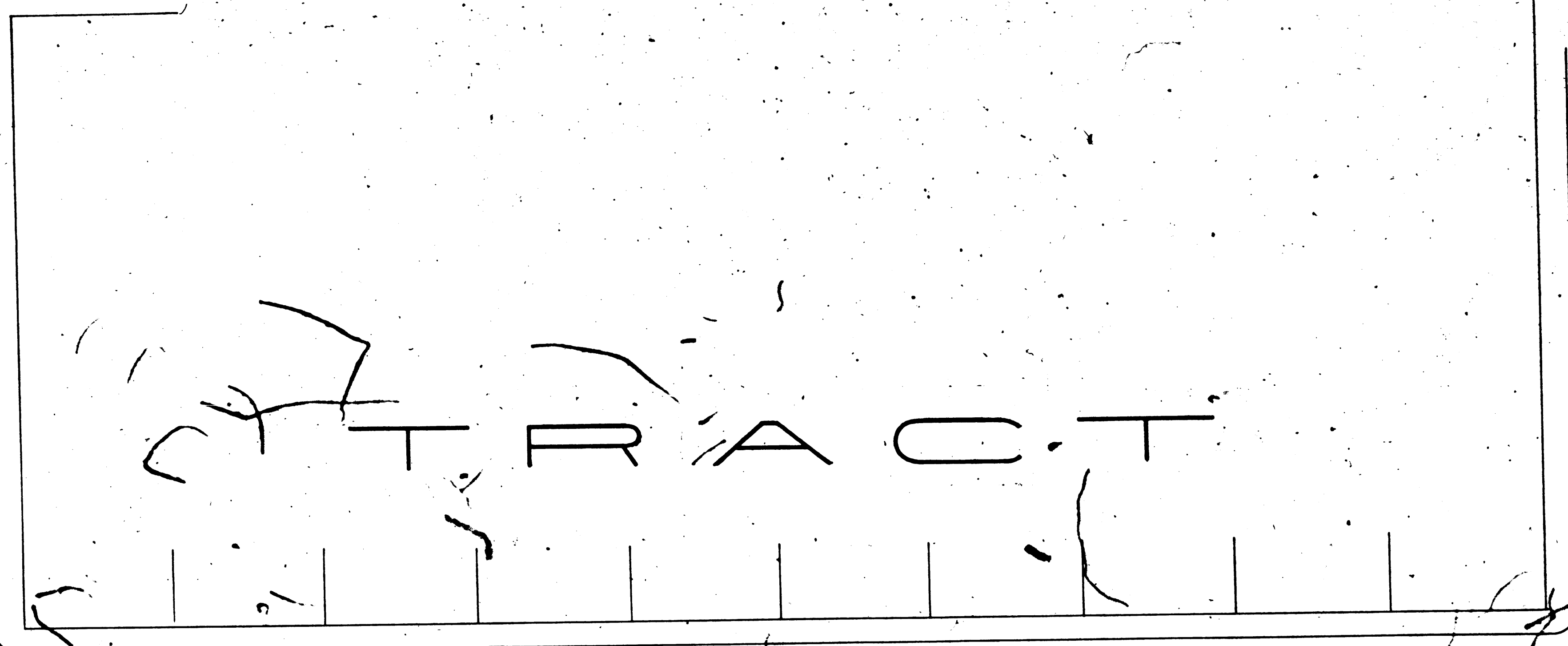
PANAMA

ST

FM 17510 2

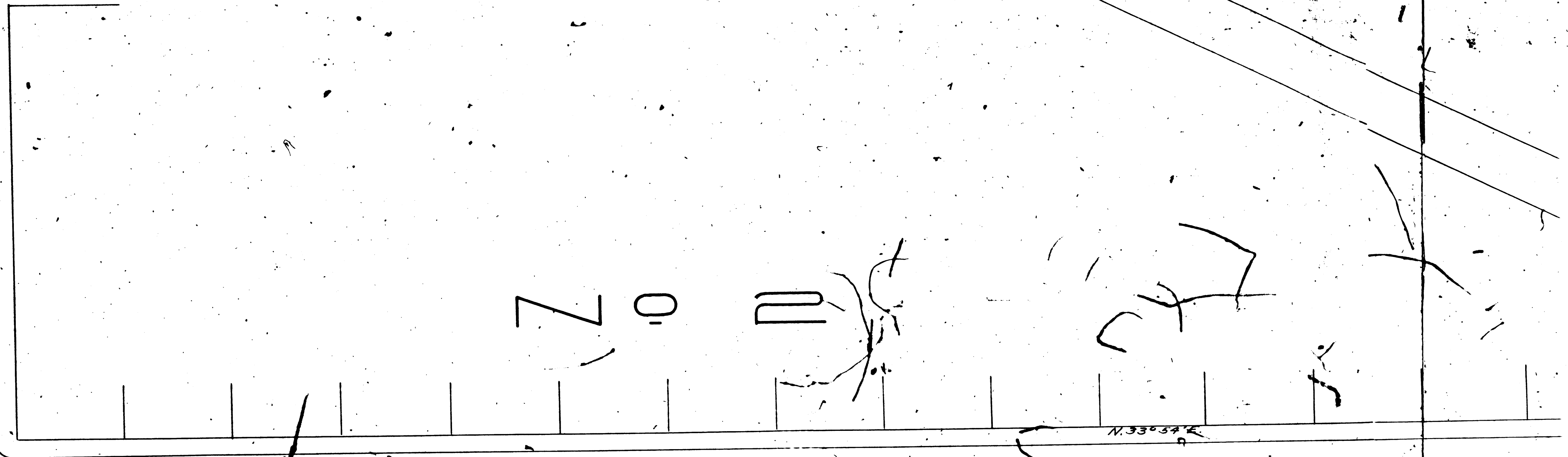
A 1 0 OF A 1 5

MASCAGNI ST.



VENICE DEL REY TRACT

PEDEREVSKI ST.



ZONING

BOULEVARD

D 2527-216 N34°07'E 2420.42

SPEEDWAY

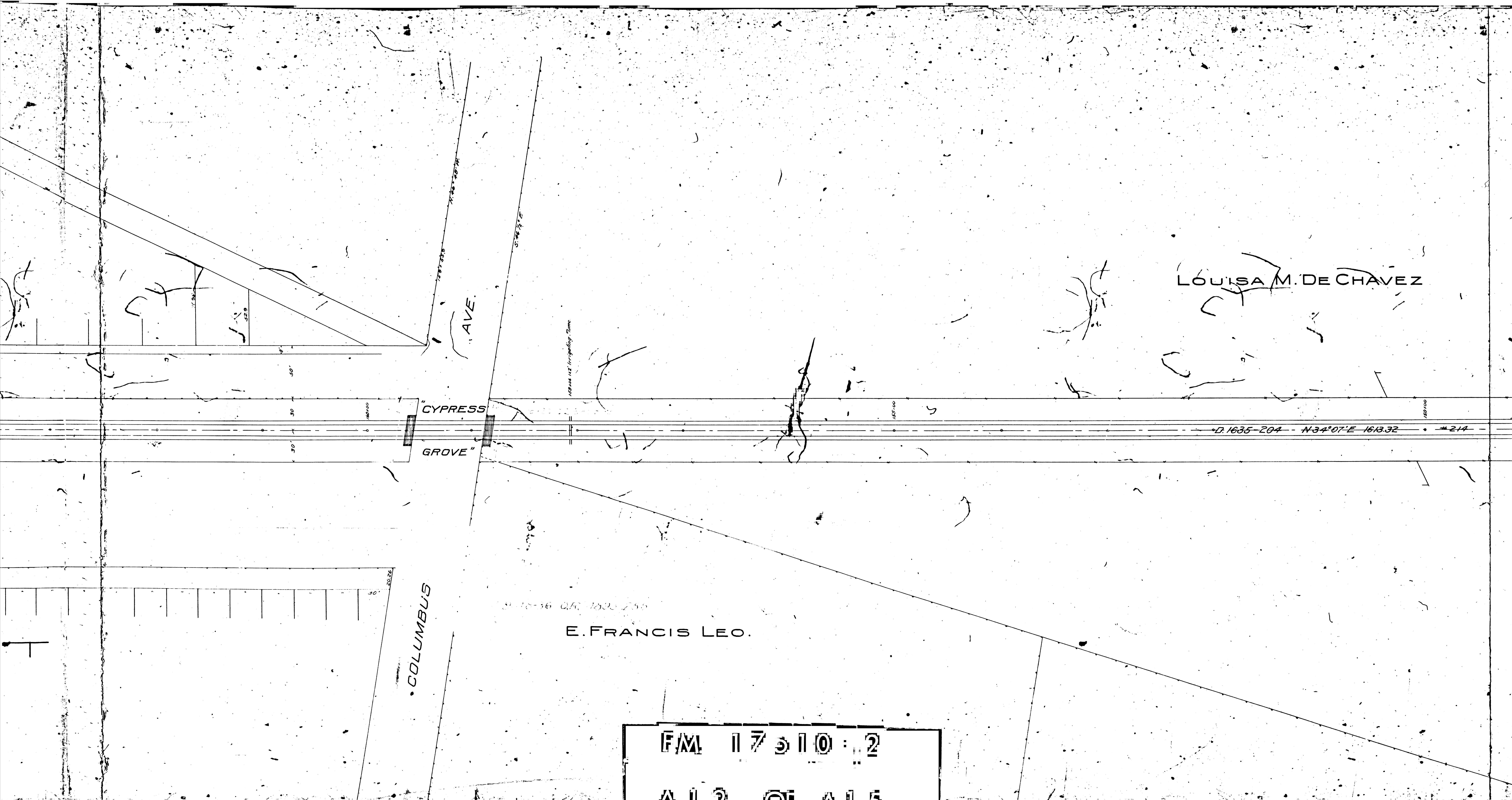
ORD 37-2-177

N.33°54'E 1990.5

VENICE DEL REY TRACT

FM 17510 2

A 111 OF A 15



LOUISA M. DE CHAVEZ

"AVE."

"CYPRESS GROVE"

"COLUMBUS"

E. FRANCIS LEO.

D. 1635-204 N34°07'E 1613.32' #214

F/M 117510:2
A 12 OF A 15

DE CHAVEZ

SANTA ANTONIA ROAD
CHAVEZ

COMPTON AND

74°07'E 1613.32

M 214

D 1035 206 N3

FM 17510 - 2

A 13 OF A 15

THEODORE F. HASS

HEIRS OF MARIA MACH

J. J. CHARNOCK

FM 17510:2

A 14 OF A 15

D-1635-206 N 34° 07' E 1109.07 #213

N 34° 07' E 553.21

D-1626-202 #213

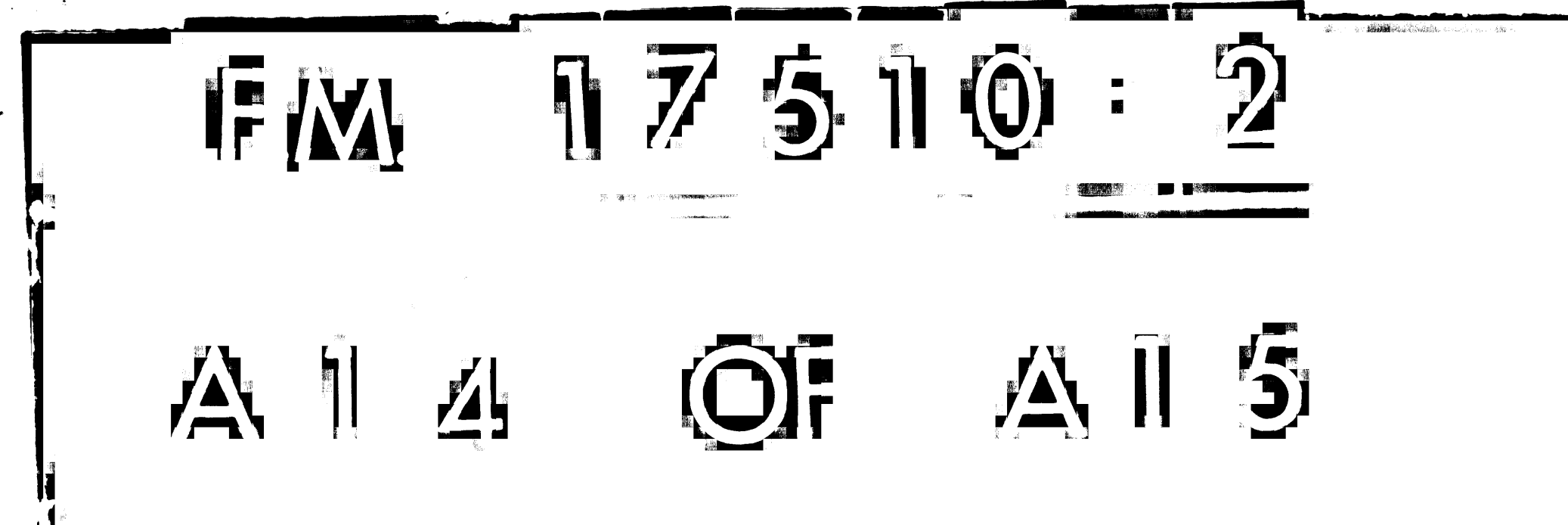
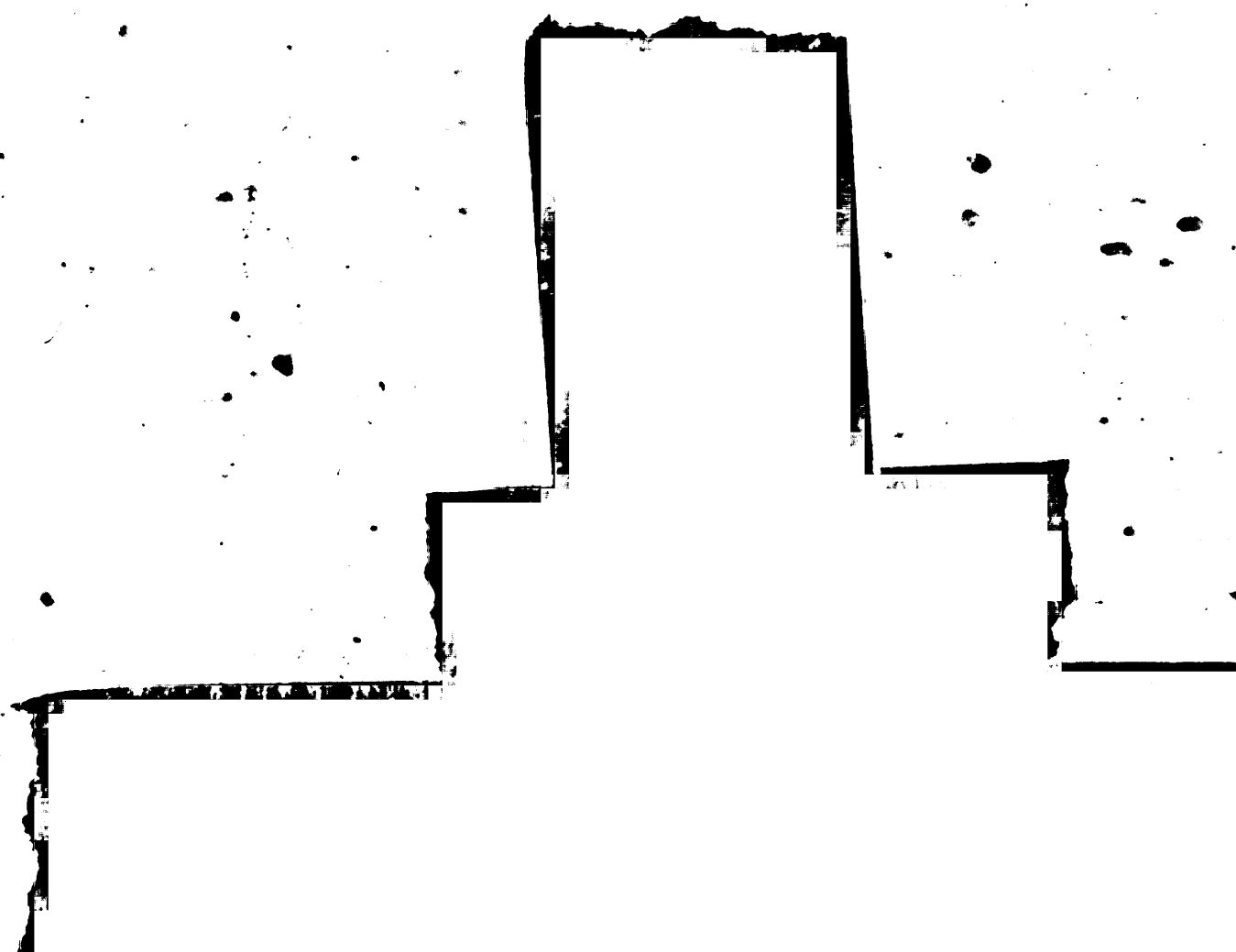
N 58° 45' W
128.87

N 58° 45' W

128.87
1/2 Original Plats

1/2 Original Plats

1/2 Original Plats



THEODORE F. HASS

HEIRS OF MARIA MACHADO

CARL G. PURSCHE

J. J. CHARNOCK

F/M 17510 = 2
A 15 OF A 15

D-1626-202 #213

D-1626-202 #213

D-2175-127 N-34°-07'-E 7262 #212

N 34° 07' E 553.21

N 58° 49' W

N 58° 49' W

N 36° 49' W

128.03 1/2 Irregular Plats

121.222

121.072

122 Irregular Plats 128-141

122 Irregular Plats 128-141