

LOS ANGELES RAILWAY CO.
GARVANZA DIV.

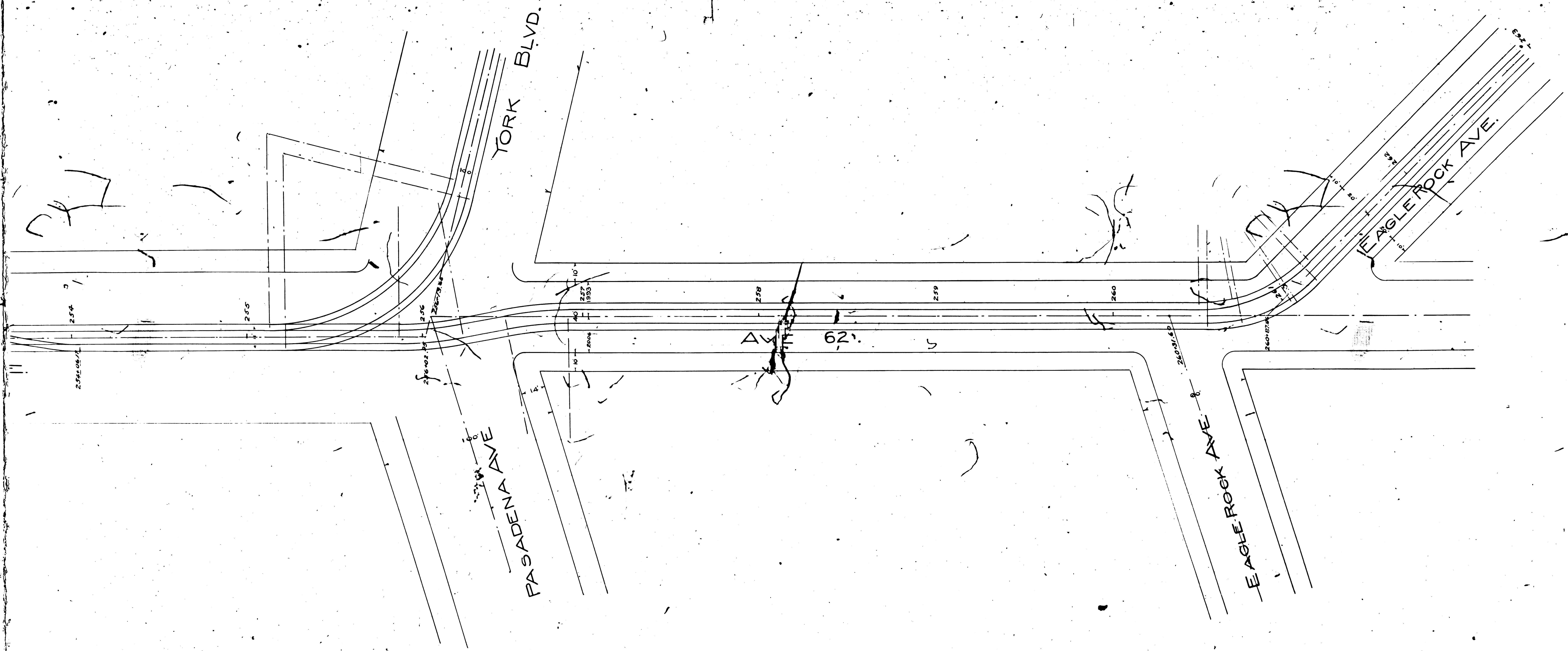
Scale 1"=30'

FB.130

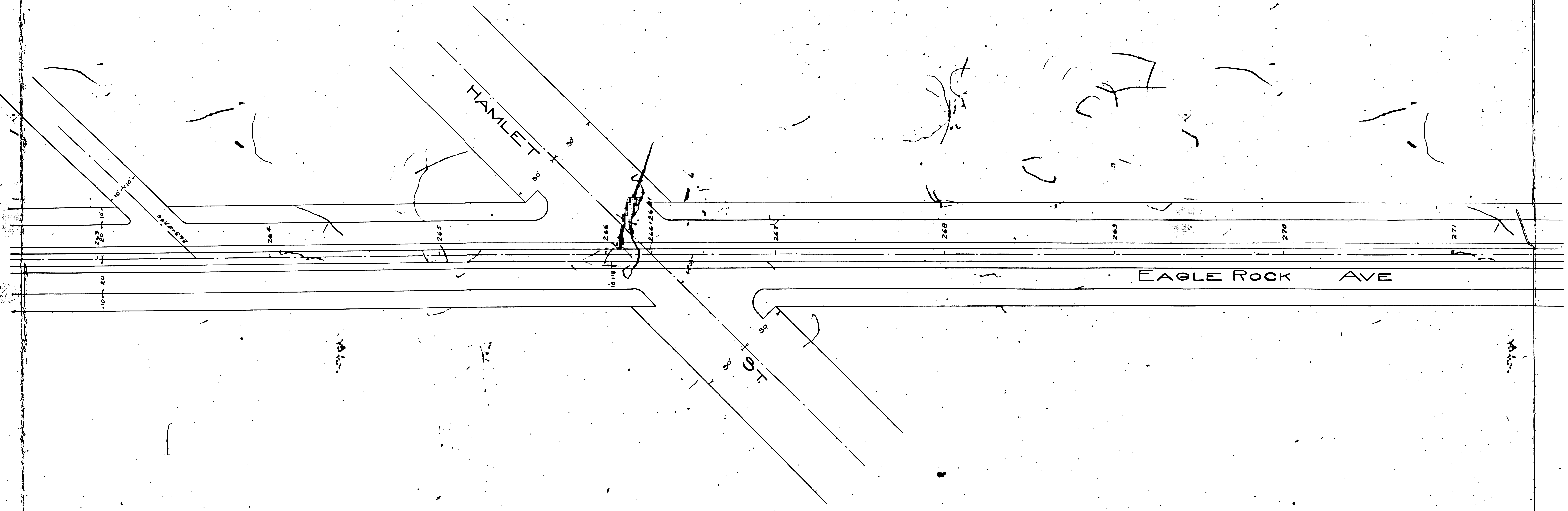
Dec 1907

Proposed grade at Eagle Rock Ave. Ord. 39,355
Eagle Rock Ave. Ord. 39,522

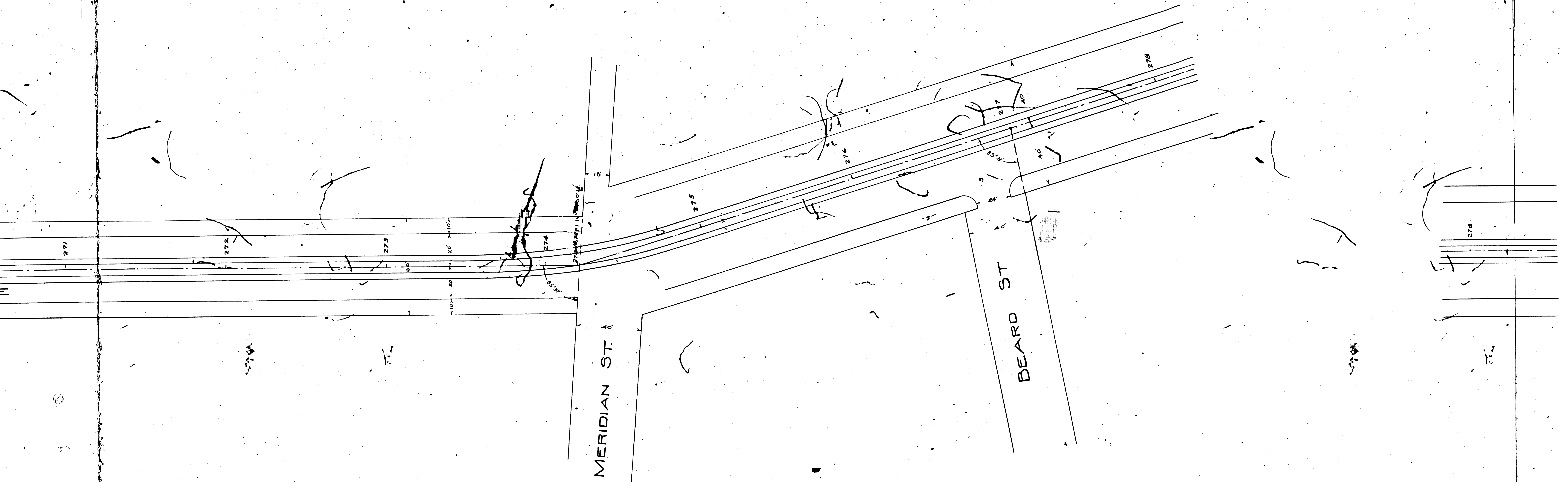
FM 17513
A1 OF A10



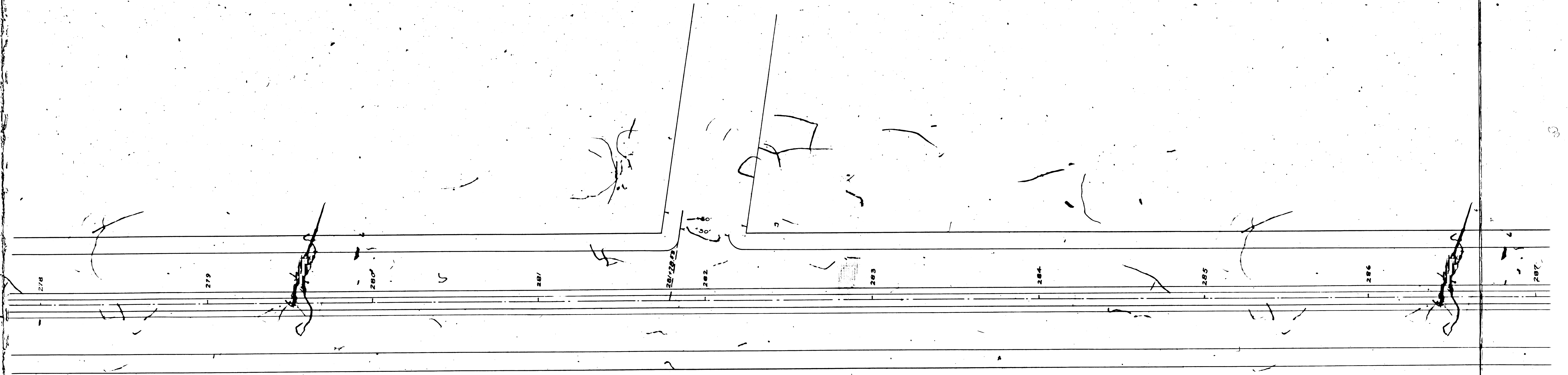
FM 17513
A 2 OF A10



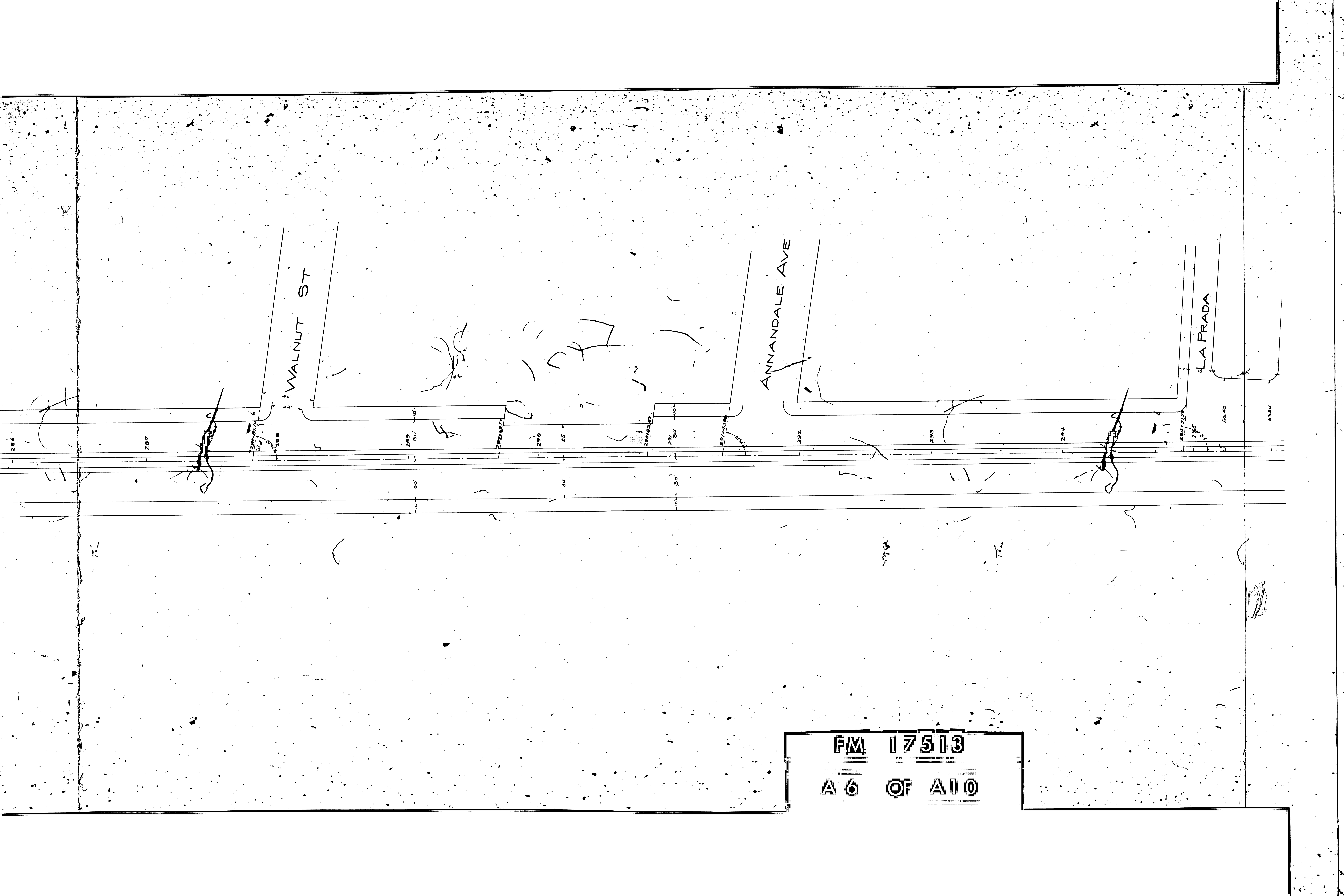
FM 17513
AS OF A10



PM 17513
A 4 OF A110



FM 17513
A 5 OF A 10



WALNUT ST

ANNANDALE AVE

LA PRADA

287

287/288

289

290

291

292

293

294

295

10'

30'

10'

5640

6380

FM 17513

A 6 OF A 10

LA PRADA

LA PRADA

REGINA LANE

FAIRMONT WAY

STRICKLAND ROAD

284-015 285 286 287 288 289 290 291 292 293 294 295 296 297 298 299 300 301 302 303 304

F.M. 17513

A 7 OF A 10

STRICKLAND ROAD

ANNAN WAY

GLENDALE AVE

304

305

306

307

308

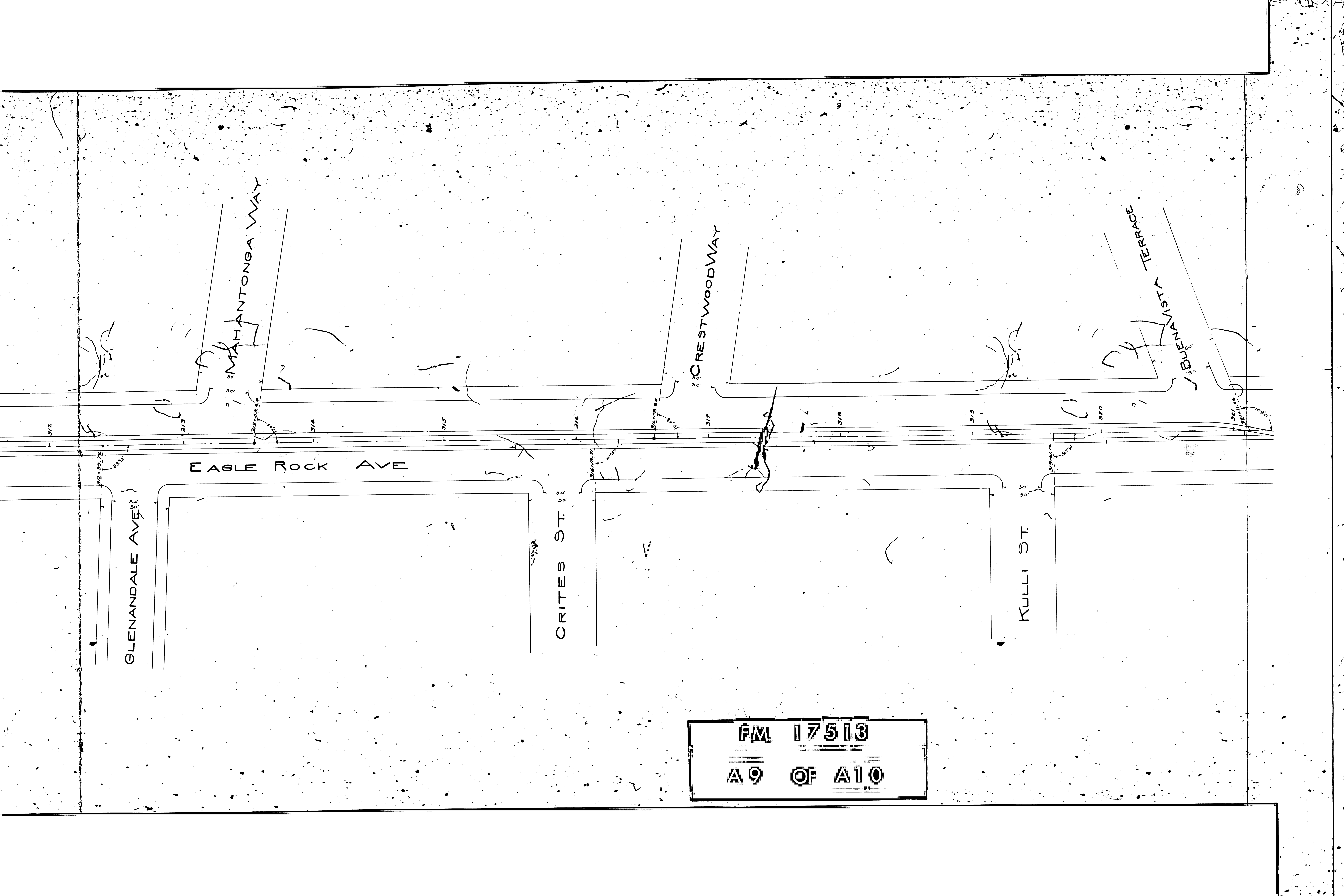
309

311

312

FM 17513

A8 OF A10



GLENDALE AVE

EAGLE ROCK AVE

MAHANTONGA WAY

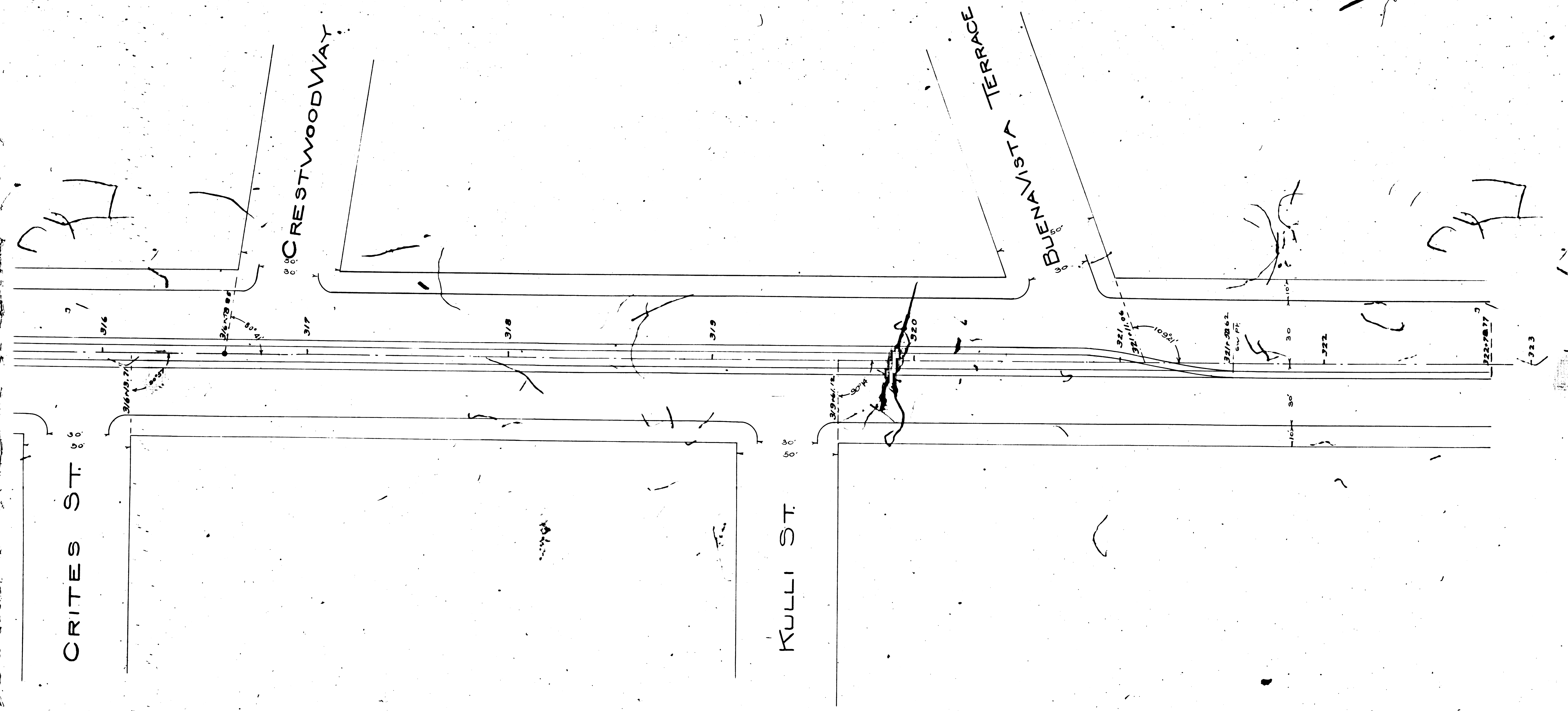
CRITES ST.

CRESTWOOD WAY

KULLI ST.

BUEMAN ST. TERRACE

FM 17513
A9 OF A10



FM 17513
A 10 OF A 10