

MELROSE AVE.

MELROSE

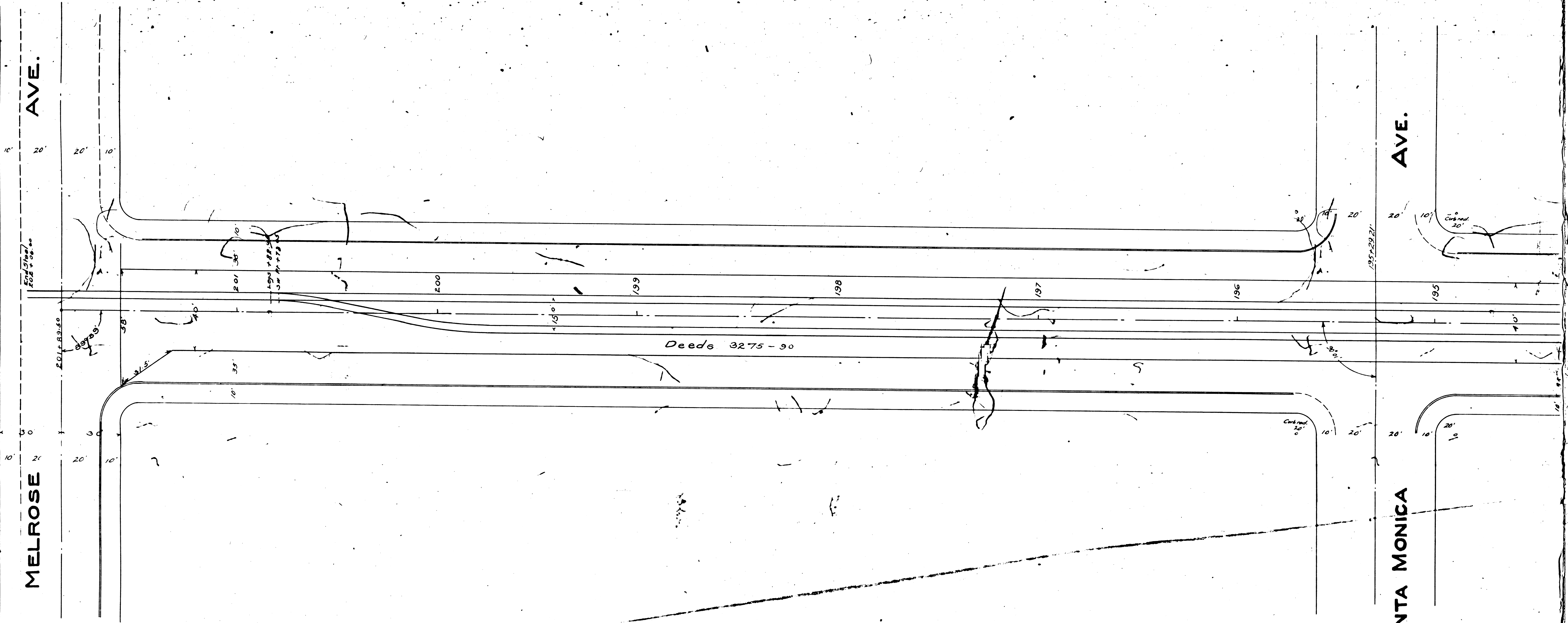
AVE.

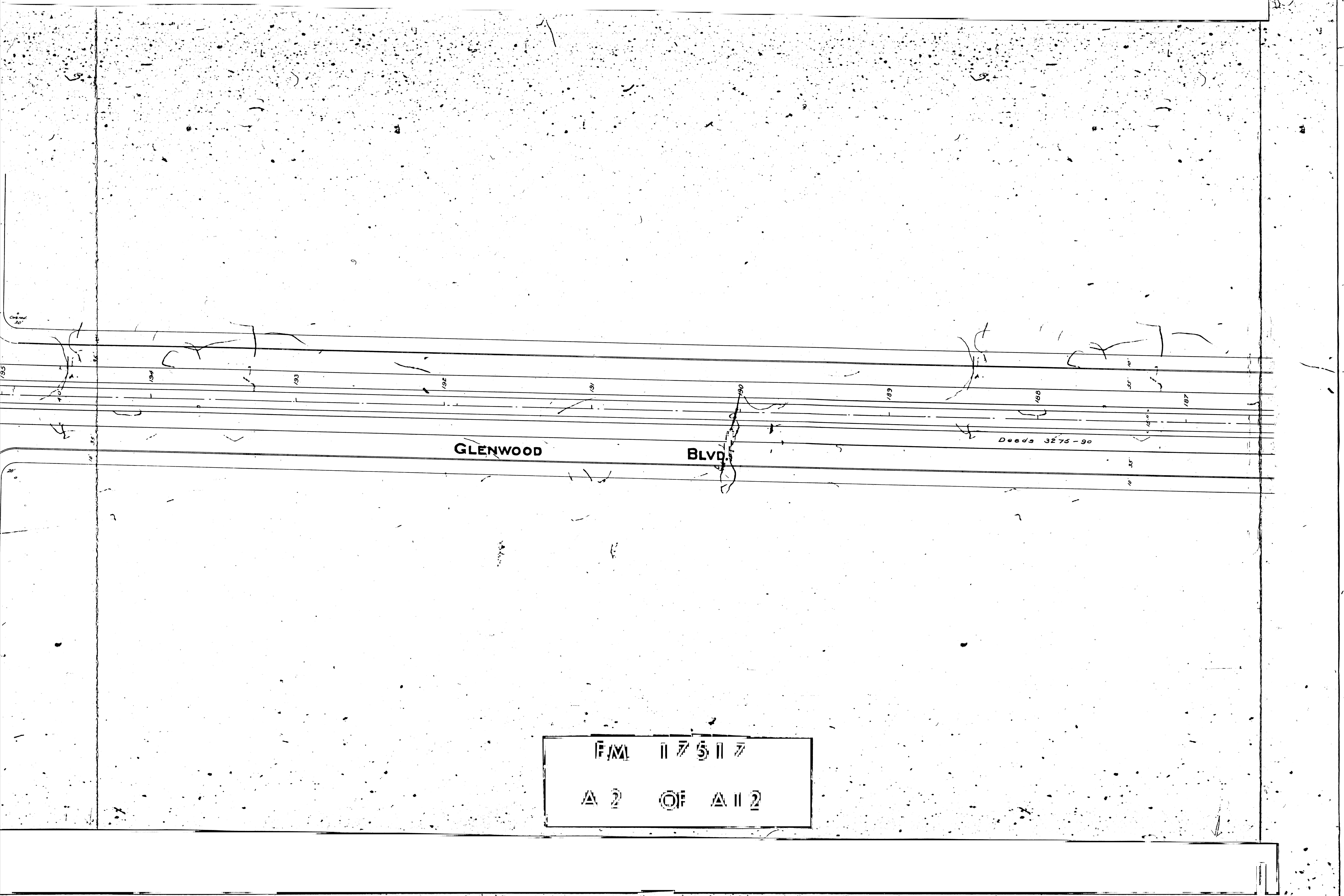
SANTA MONICA

Deeds 3275-90

F/M 117517

A 1 OF A 2



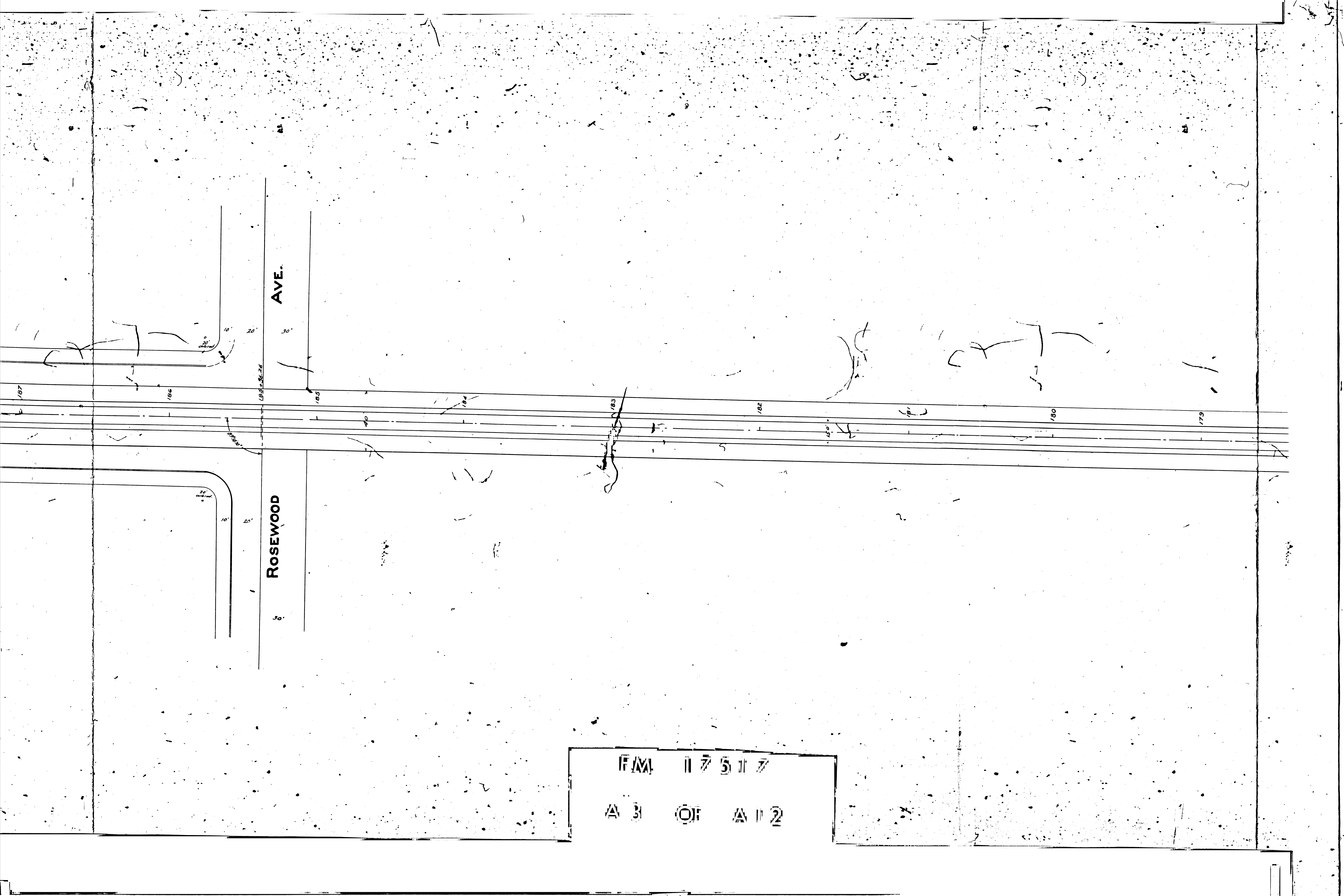


GLENWOOD

BLVD.

Deeds 3275-90

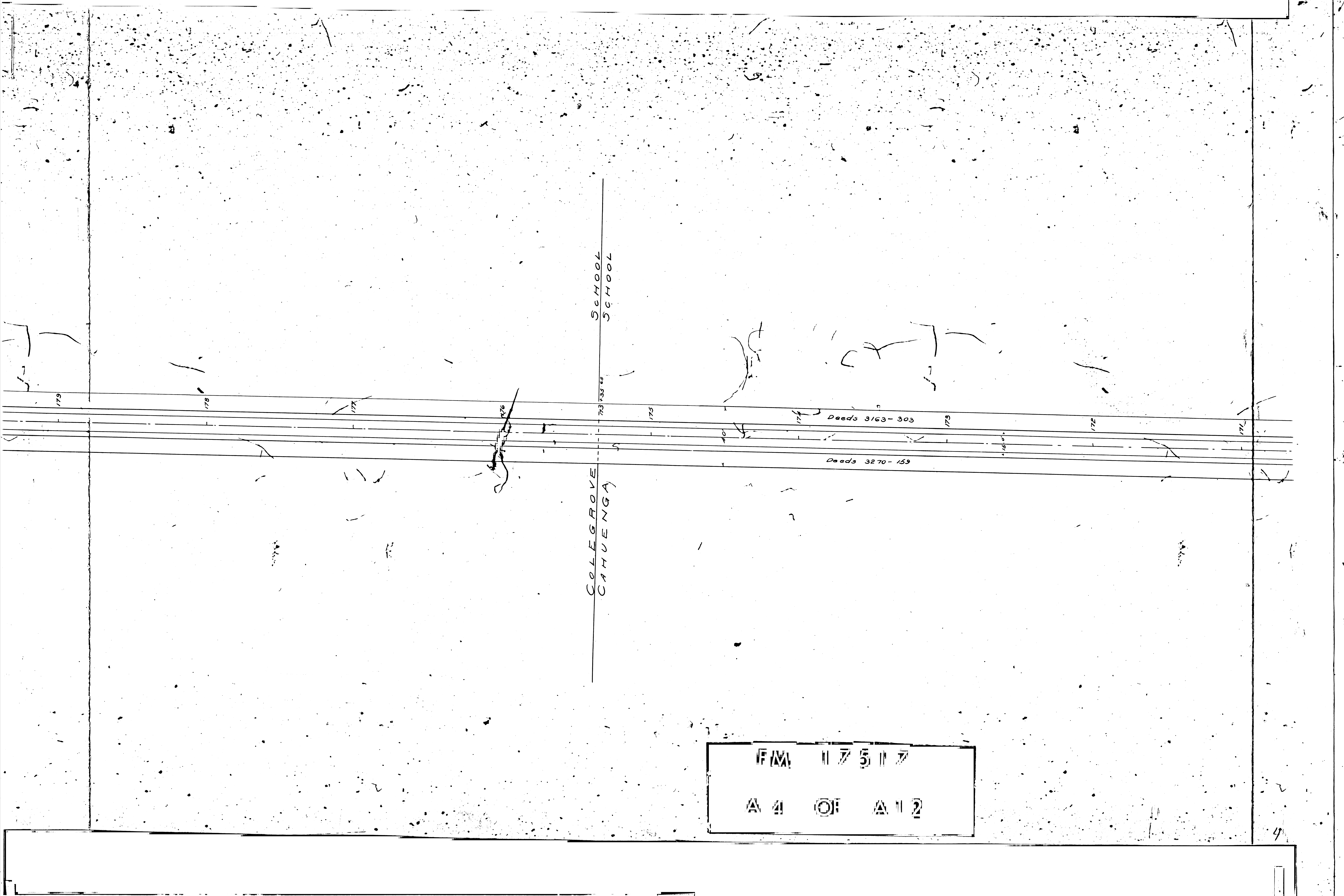
F/M 117517  
A 2 OF A 12



AVE.

ROSEWOOD

F.M. 117517  
A 3 OF A 12



SCHOOL  
SCHOOL

COLEGGROVE  
CAHUENGA

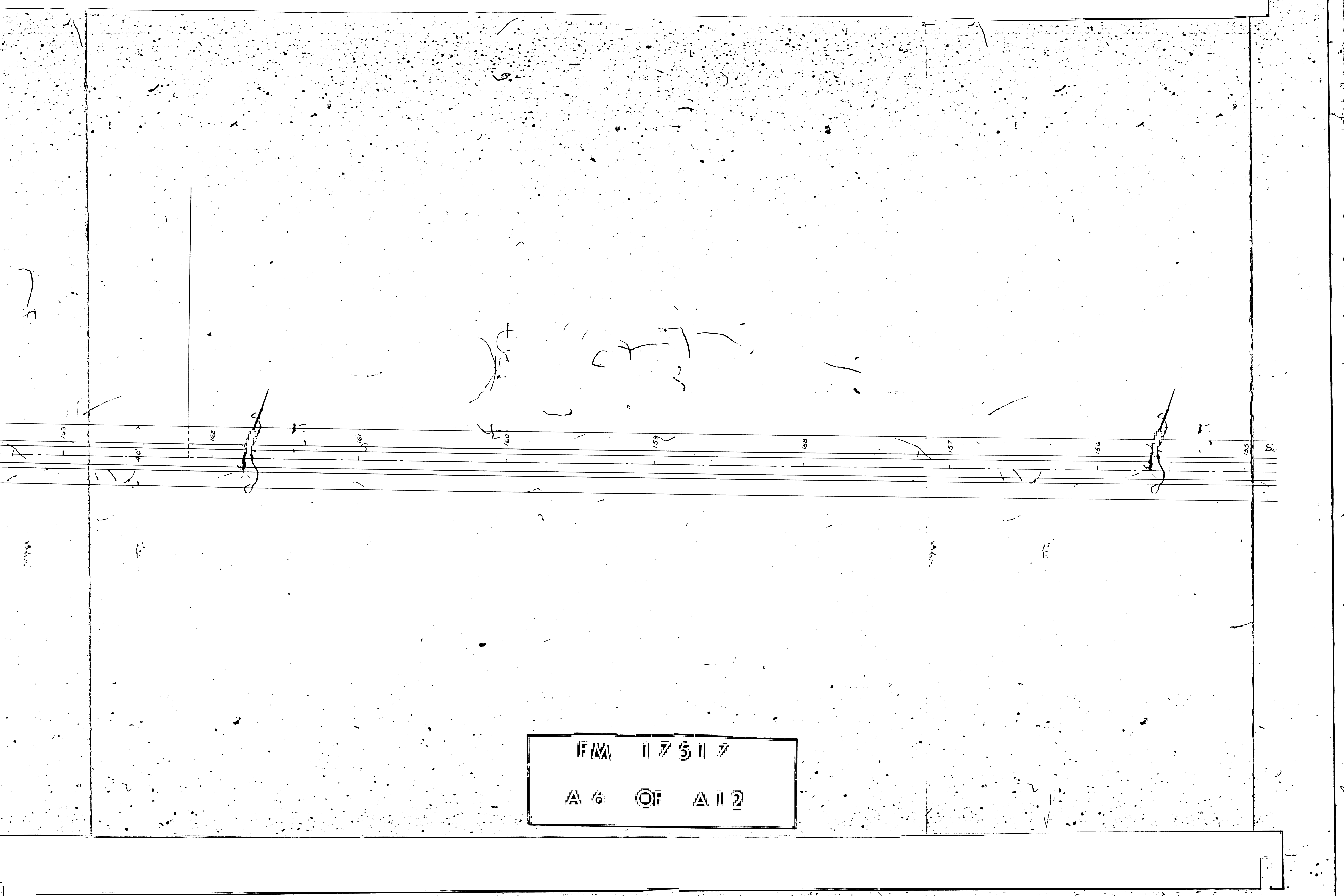
Deeds 3163-303

Deeds 3270-159

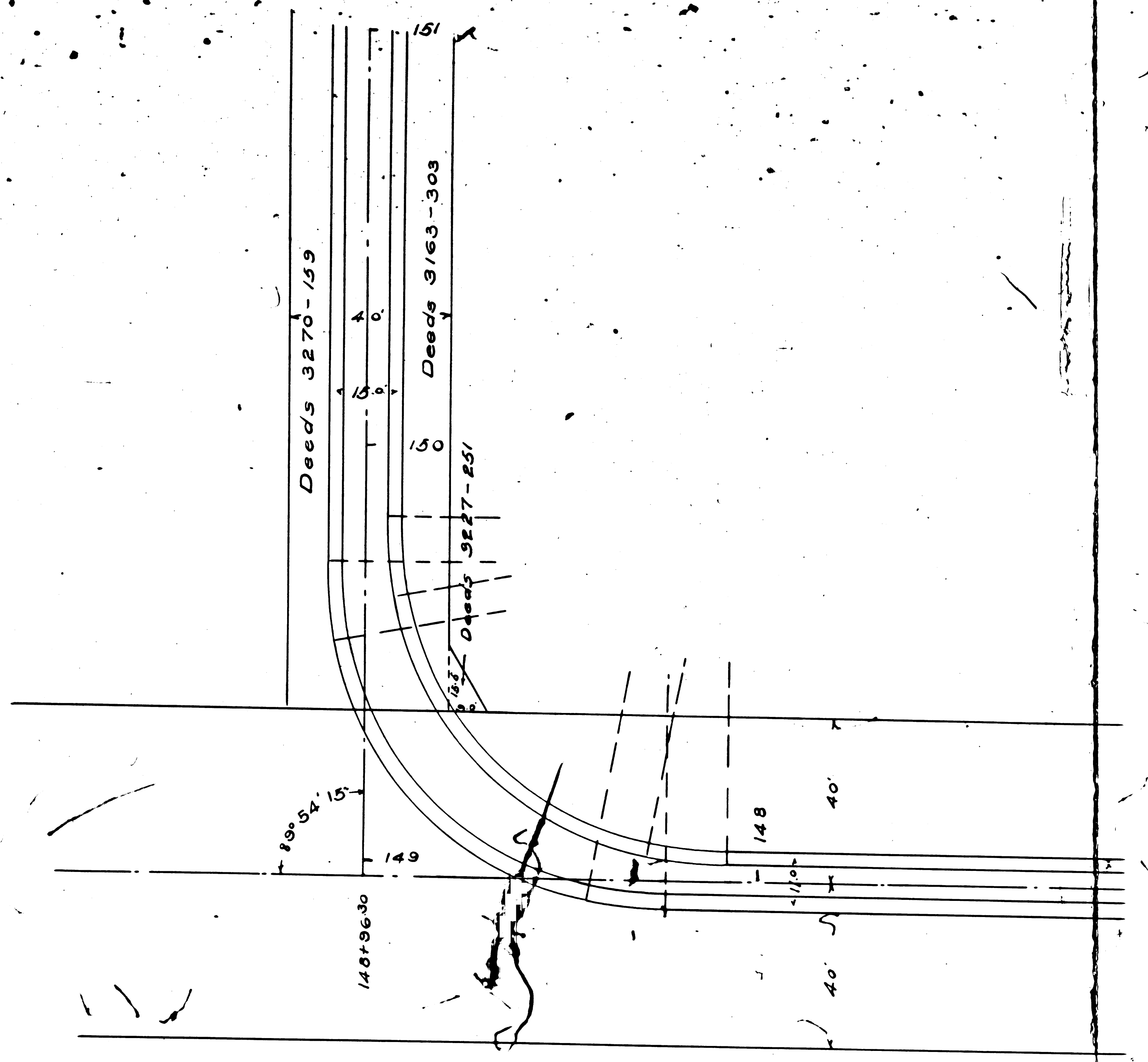
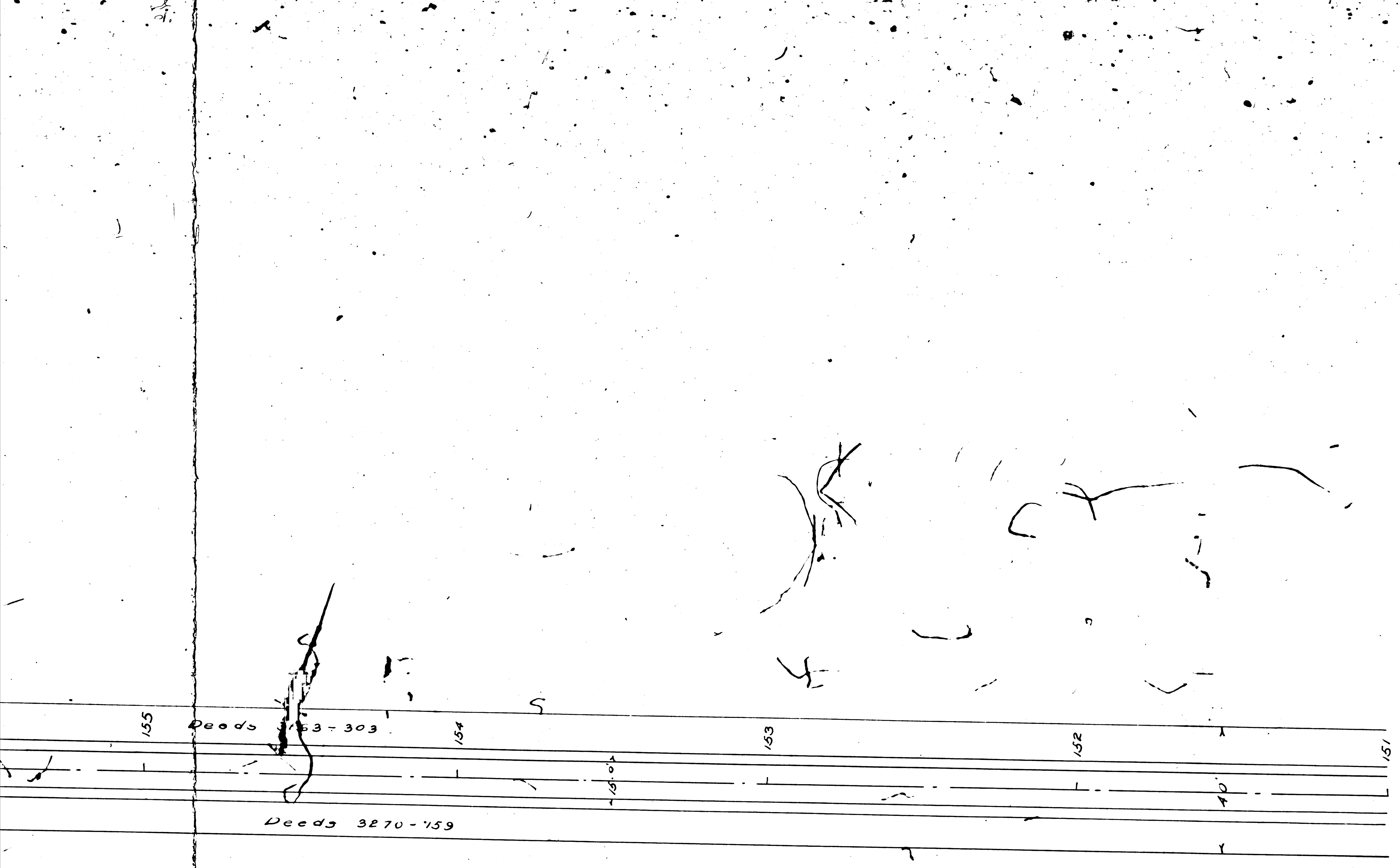
F/M 117517  
A 4 OI A 12

F/M 1 7 5 1 7

A 5 C F A 1 2



FVA 117517  
A 6 OF A 12



FAX 11 7 5 11 7  
 A 7 OF A 11 2

147

146

145

144

143

142

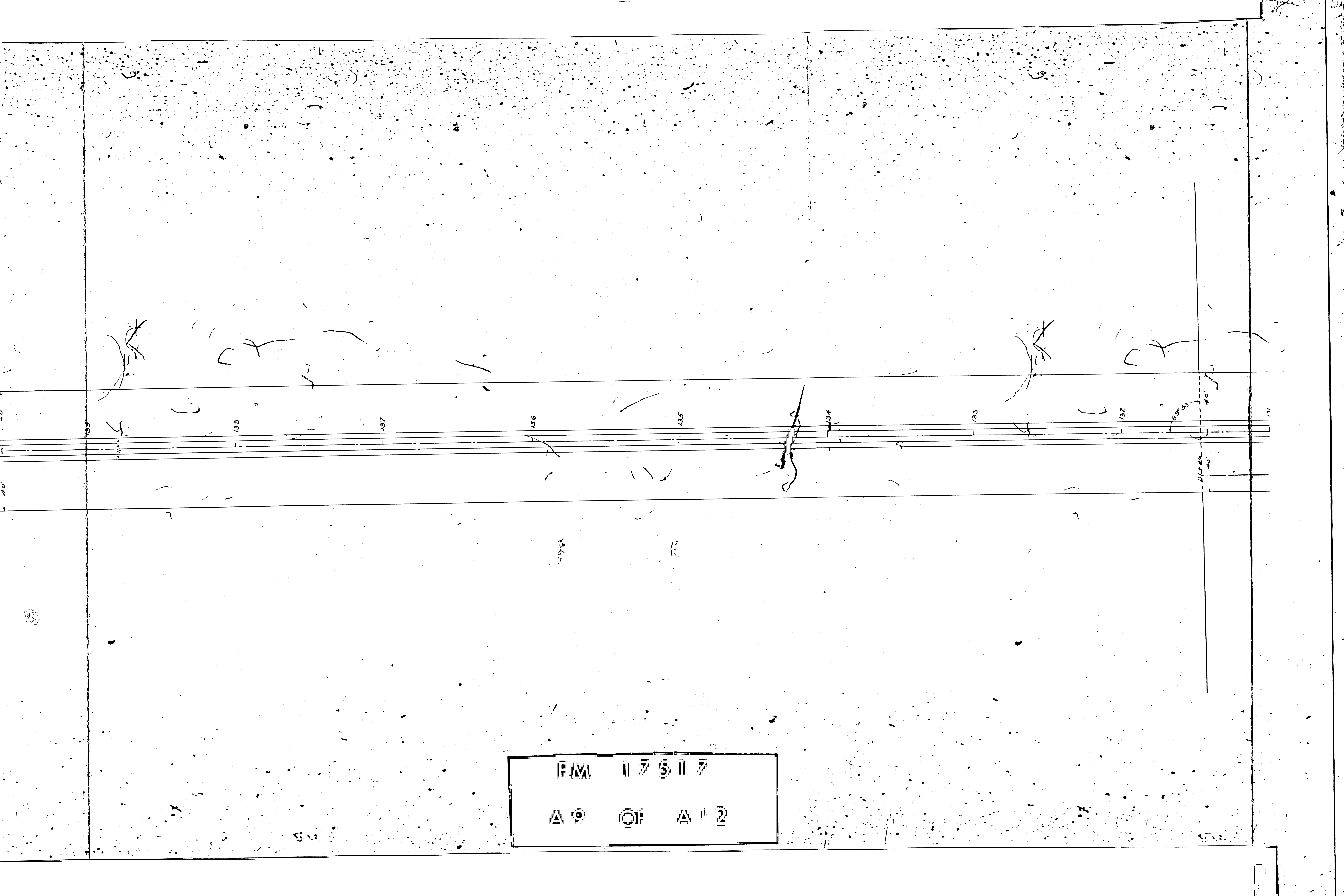
141

140

F/M 11 7 5 11 7

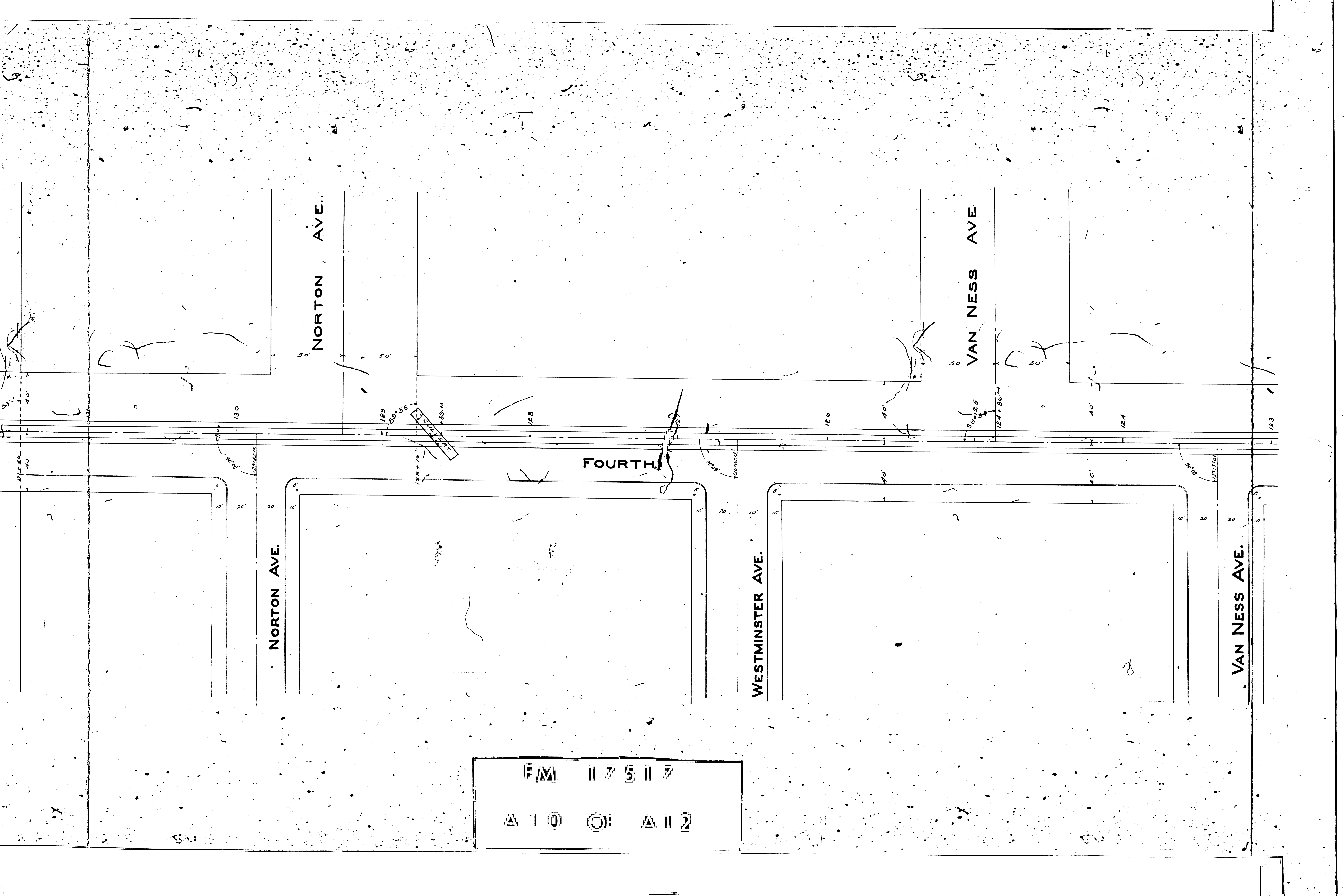
A 8 OF A 11 2





F.M.A. 11 7 5 11 7

△ 19 ○ F △ 11 2



NORTON AVE.

VAN NESS AVE.

FOURTH

NORTON AVE.

WESTMINSTER AVE.

VAN NESS AVE.

F.M. 117517  
A 10 O A 112

VAN NESS AVE

WILTON PL.

ST.

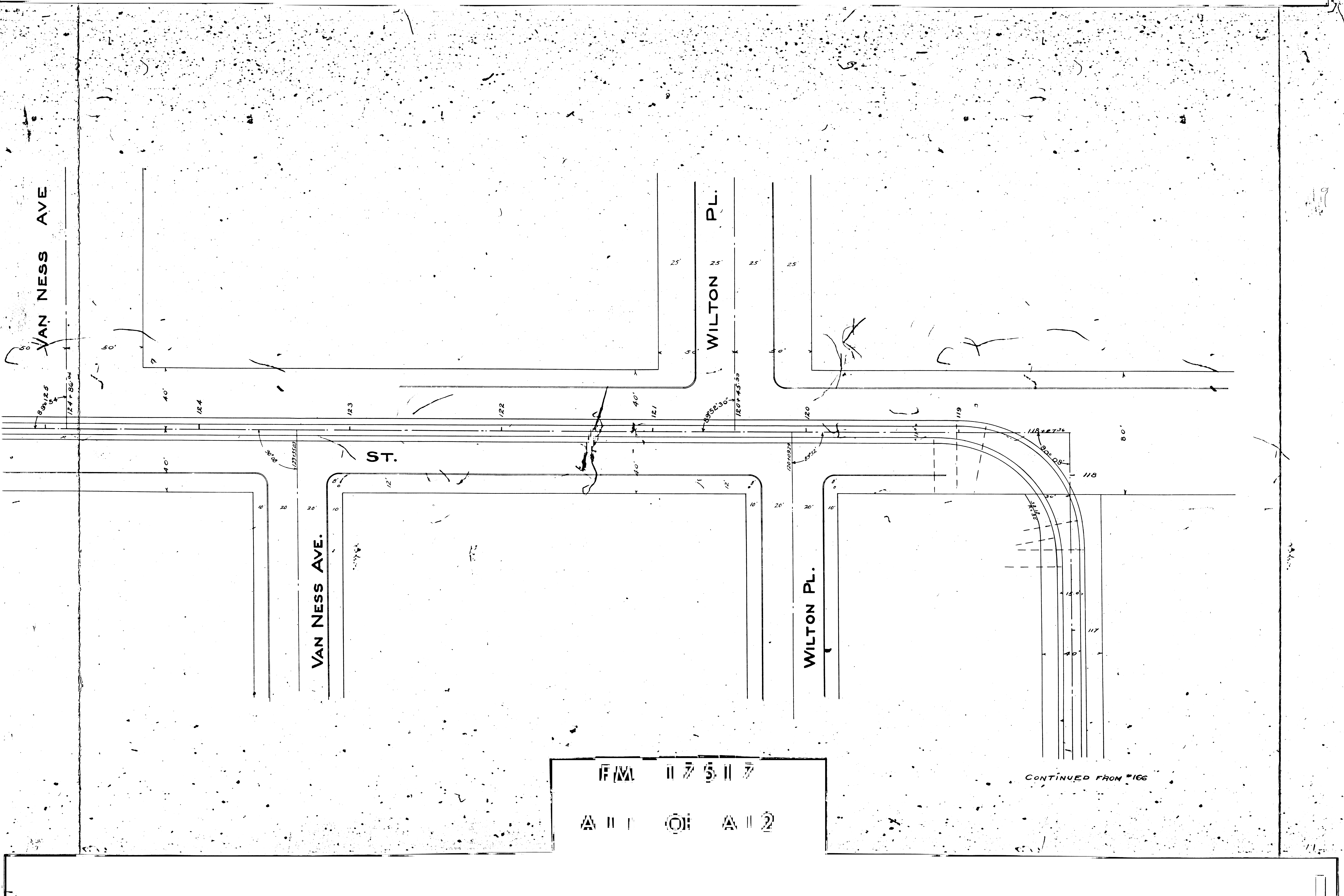
VAN NESS AVE.

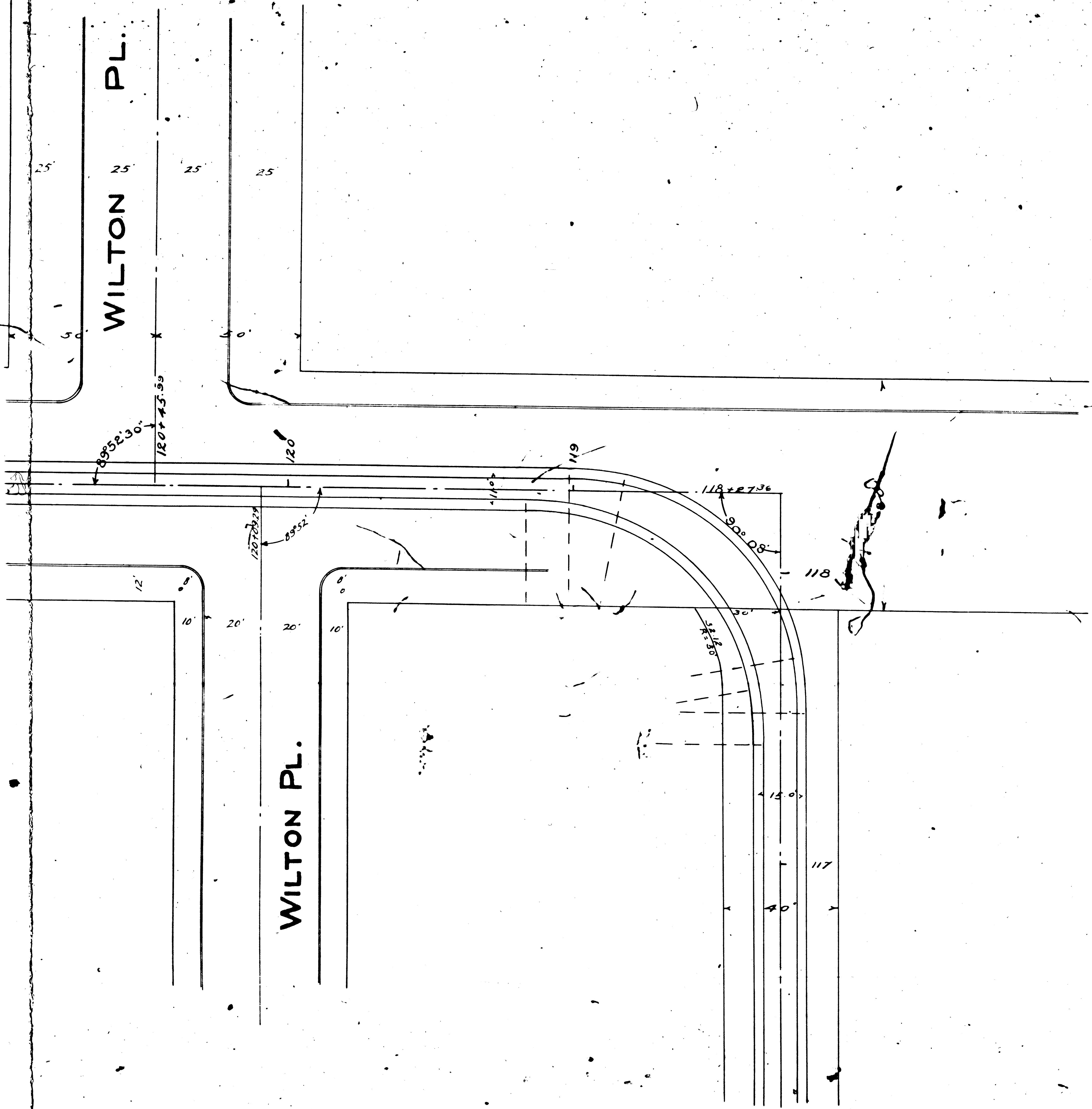
WILTON PL.

F/M 117517

A 11 O 1 A 12

CONTINUED FROM #166





LOS ANGELES RAILWAY CO.  
**W. 6<sup>TH</sup> ST. DIV.**  
 4<sup>TH</sup> ST. 1/4 R. OF W. SO. TO MELROSE AVE.  
 SCALE 30'=1" F.B. 120  
 Feb. 1908.

CONTINUED FROM #166

EXH 17517  
 A 11 2 O 11 2