

9+10 Curve  
119.36'

Taper #2  
3'00"

TRACK LAID  
AUG 23, 1906

BLUFF

TOP OF

PACIFIC OCEAN

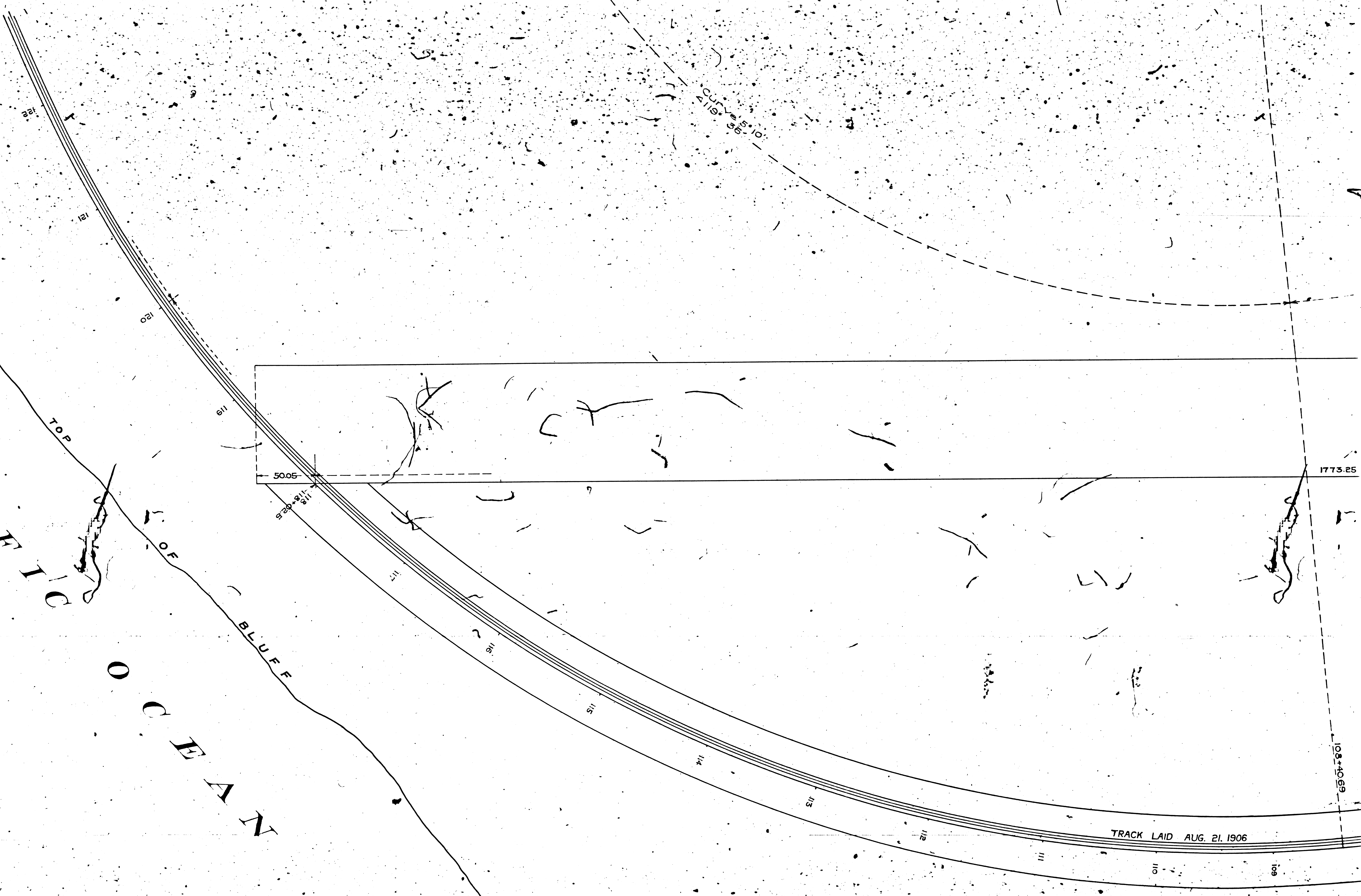
CITY LIMITS

S 131° 55.53'

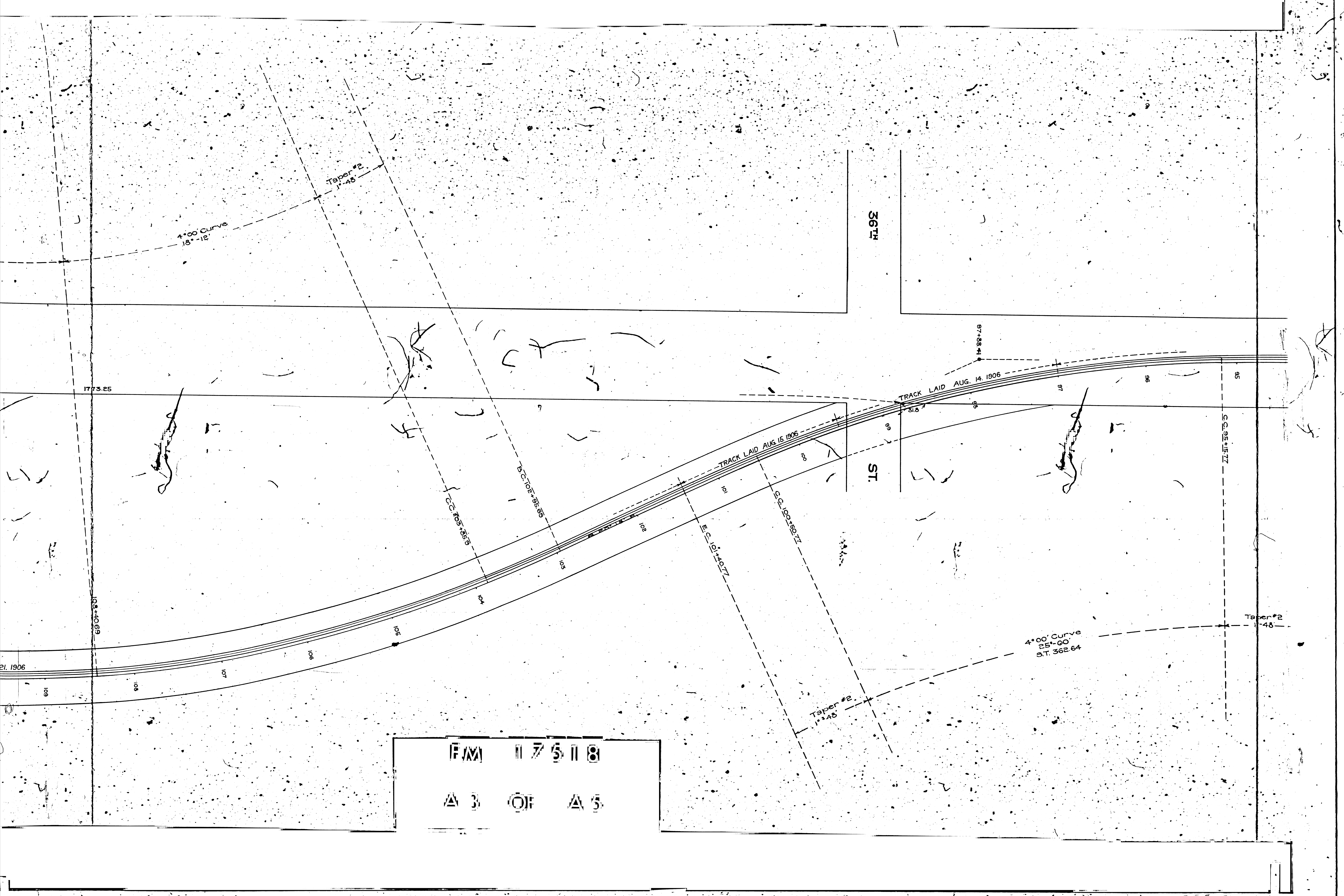
N 66° 48' W

FROM 117518  
AT OF A 5

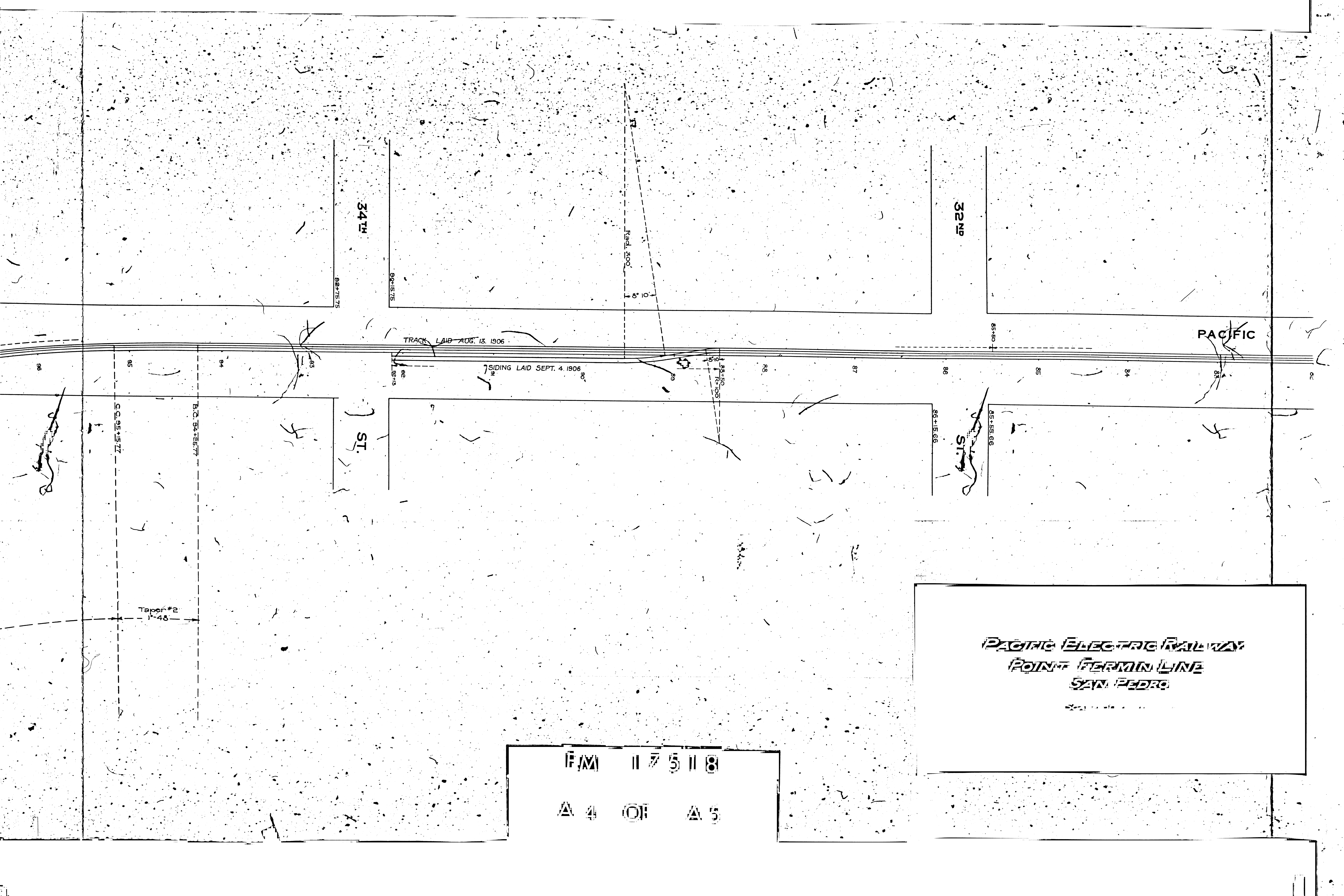
PACIFIC OCEAN  
BLUFF



P.M. 117518  
A 2 OF A 5

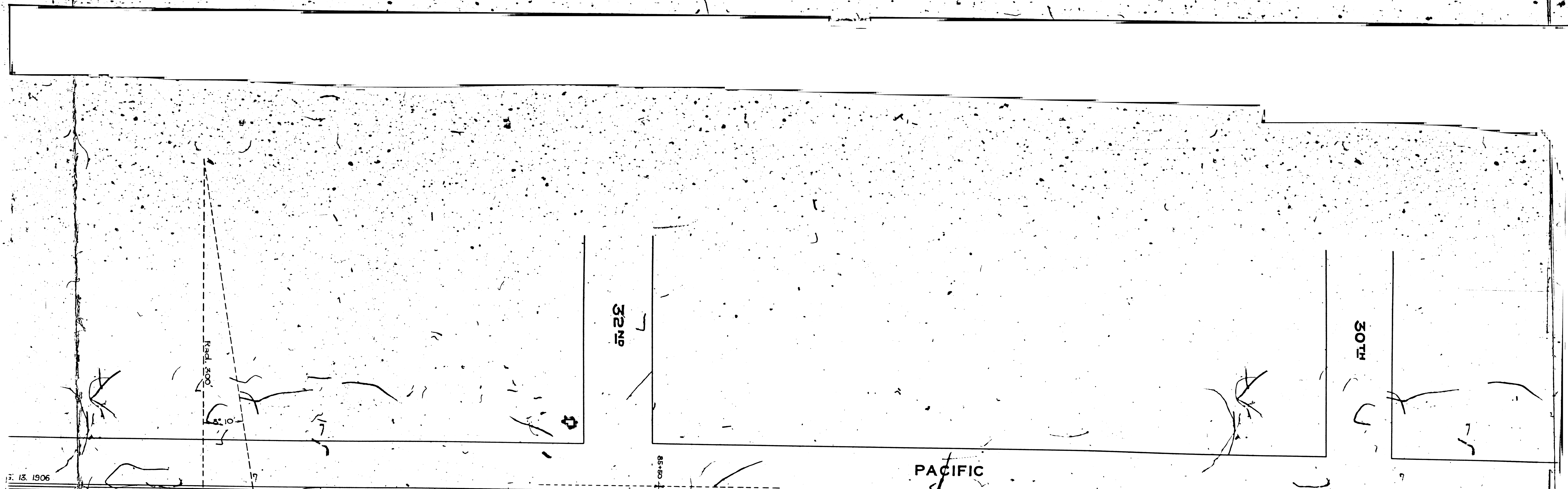


F/M 11 7 5 11 8  
 A 3 O F A 5



**PACIFIC ELECTRIC RAILWAY**  
**POINT FERMIN LINE**  
**SAN PEDRO**

F/M 11 7 5 11 8  
A 4 OF A 5



15. 1906  
 SIDING LAID SEPT. 4, 1906  
 TRACK LAID AUG 9, 1906

**PACIFIC ELECTRIC RAILWAY**  
**POINT FERMIN LINE**  
**SAN PEDRO**

F/M 117518  
 A 5 OF A 5