

DEPOT

UTAH AVE

OREGON AVE

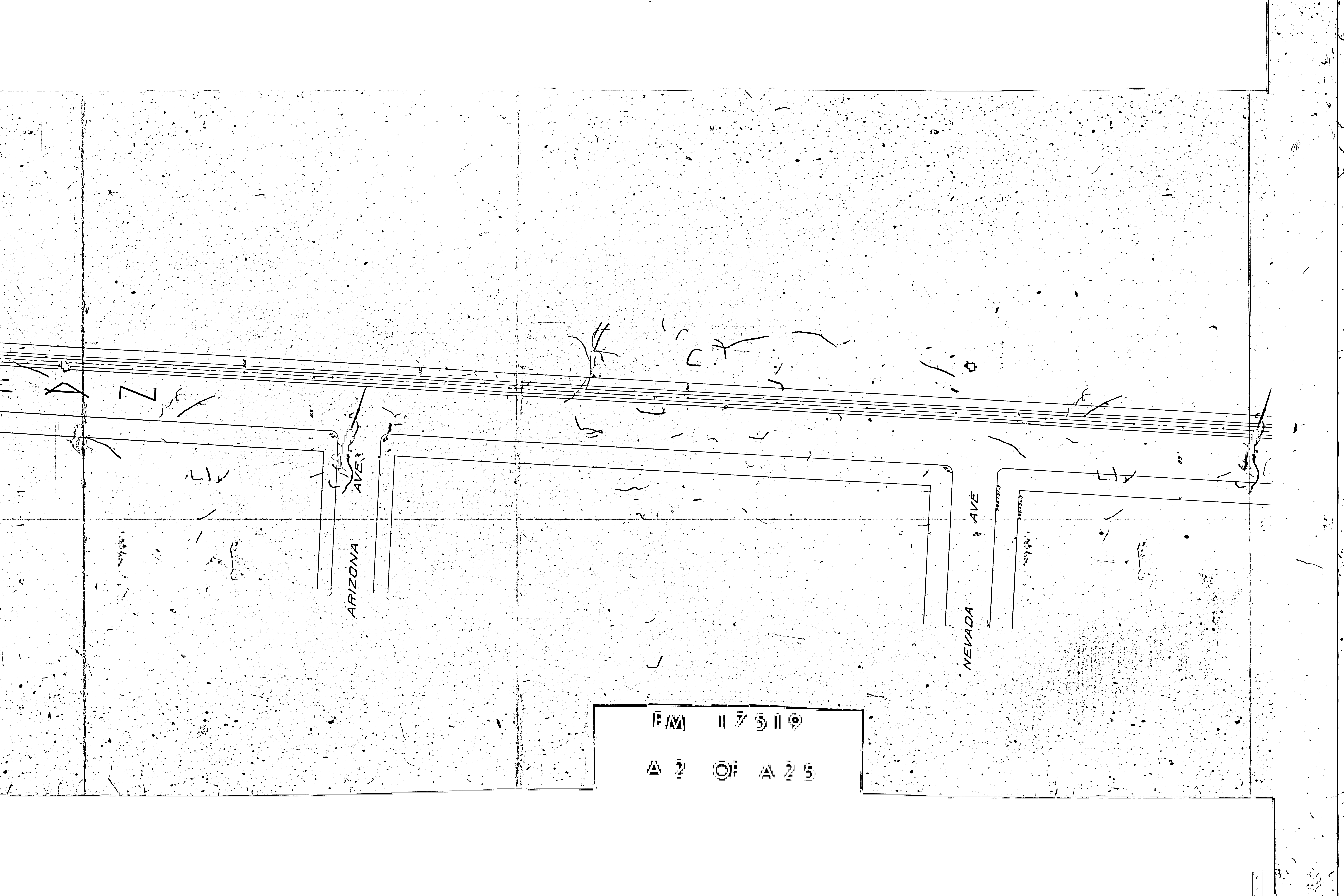
LOS ANGELES PACIFIC CO
WESTGATE DIVISION
SAWTELLE TO NORTH BEACH

SCALE: 50'-1"

SEPT. 8 - 1906.

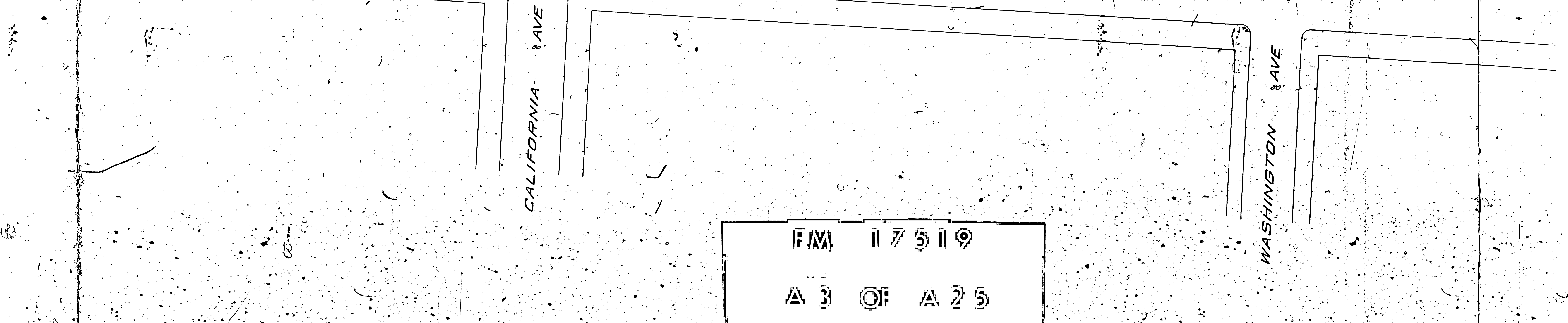
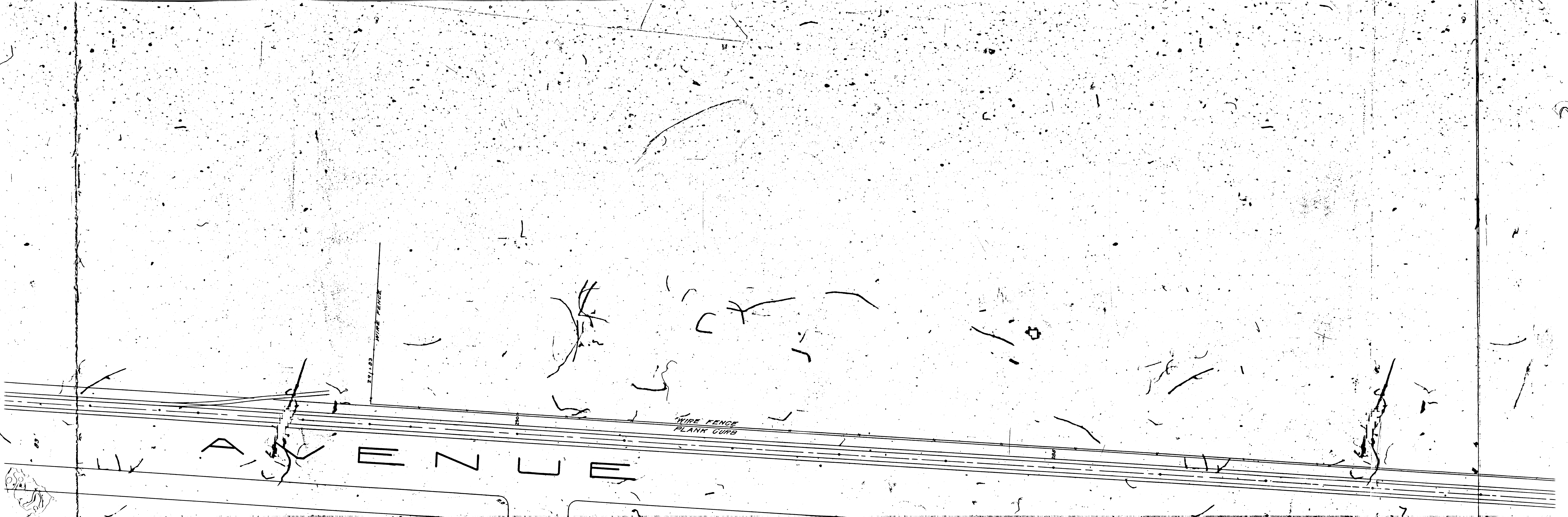
F/M 11 7 5 11 9

Δ 11 ○ 2 5

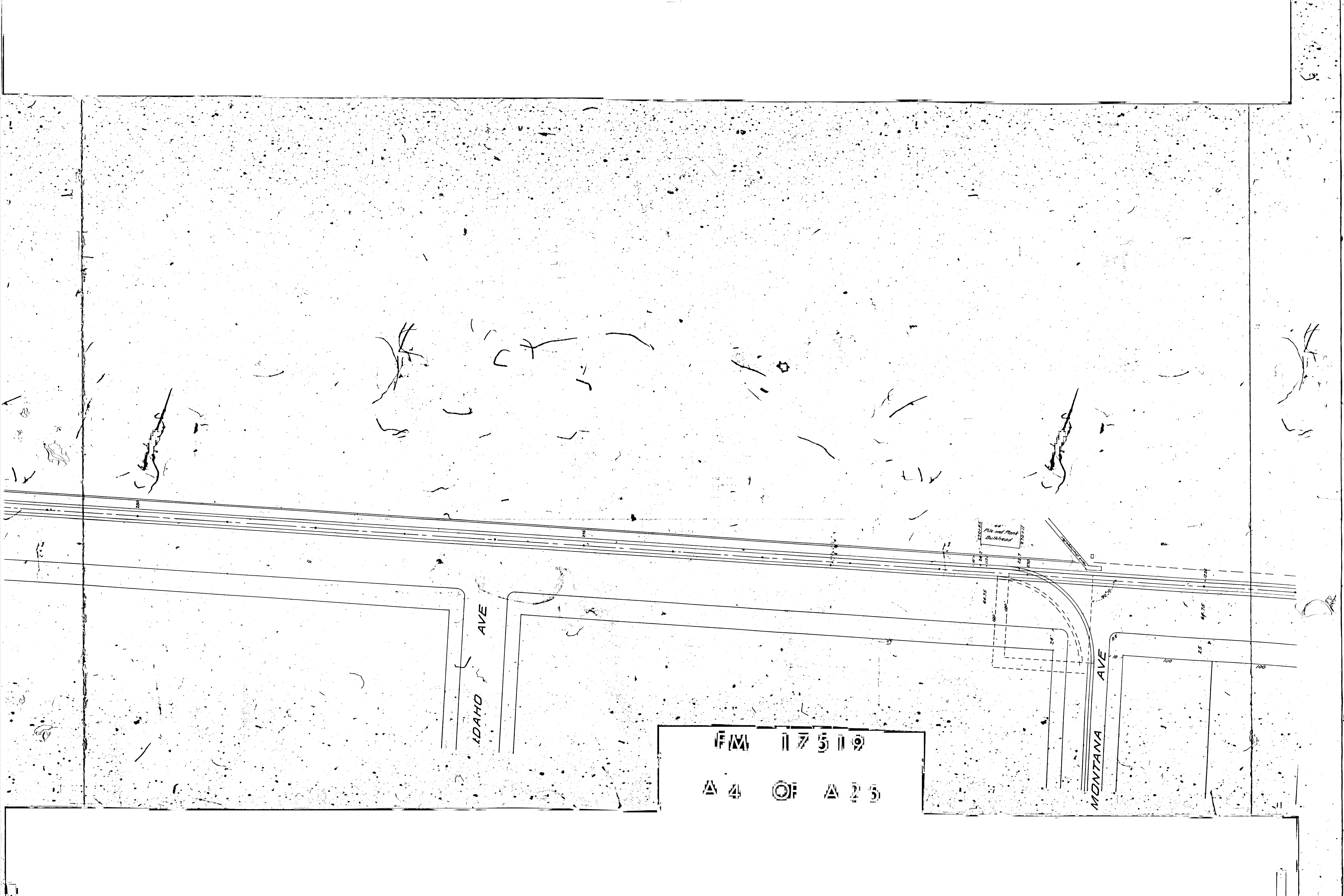


F/M 117519

A 2 OF A 25



F.M. 17519
A 3 OF A 25



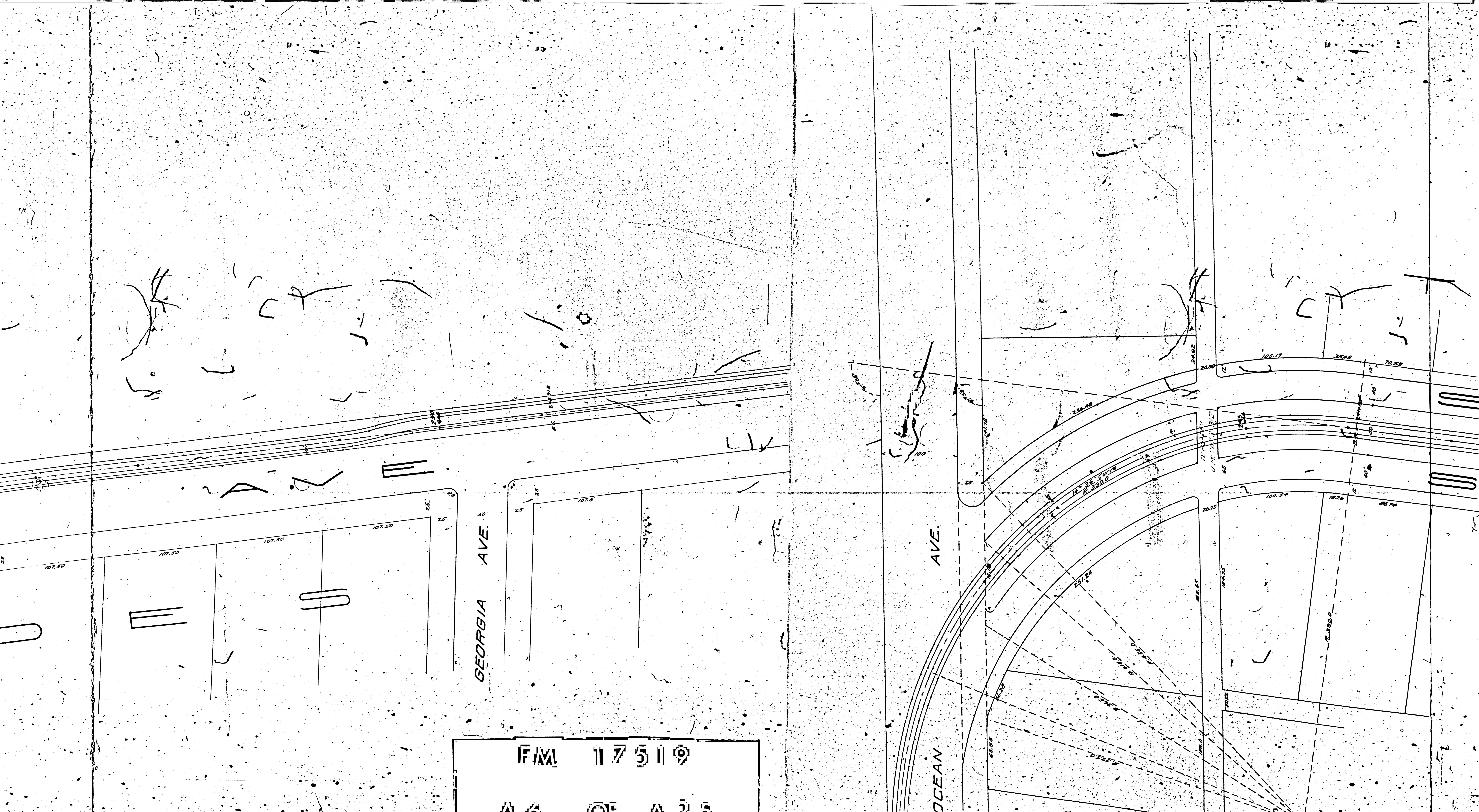
IDAHO AVE

MONTANA AVE

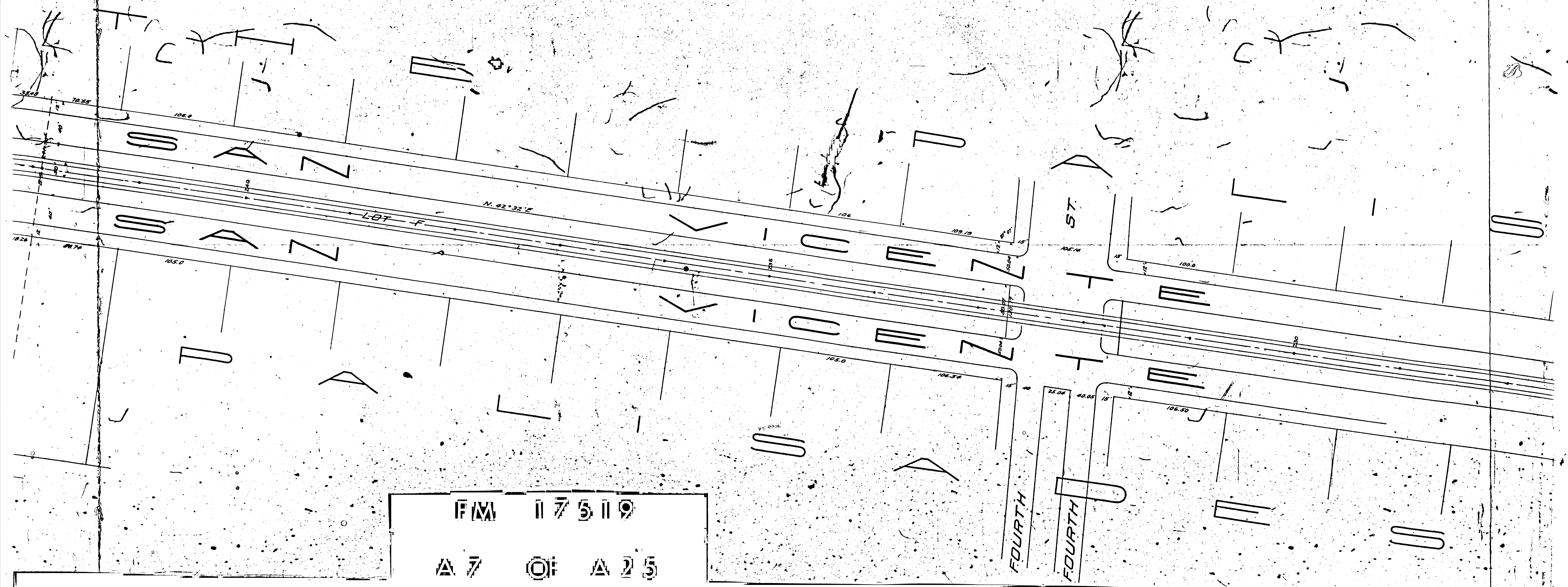
Pile and Plank Bulkhead

F/M 17519

△ 4 ○ F △ 25



F.M. 117519
A 6 OF A 25

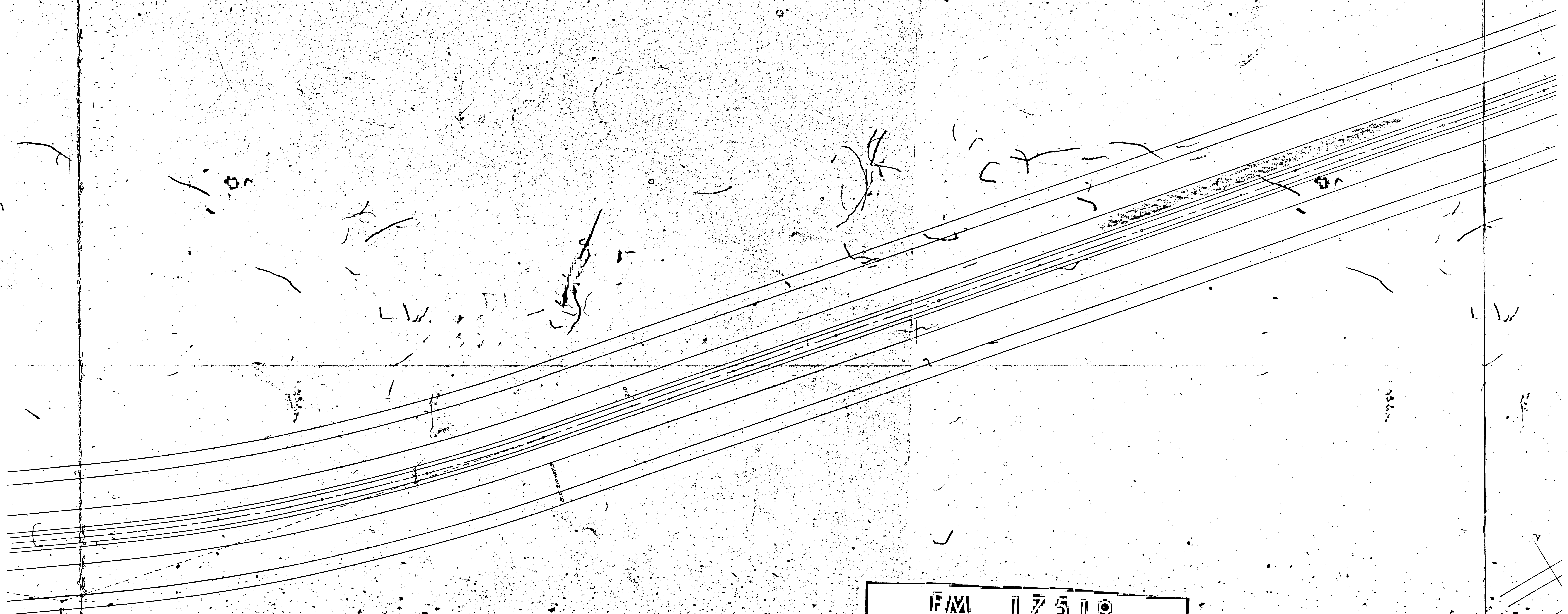


F/M 17519
A 7 OF A 25

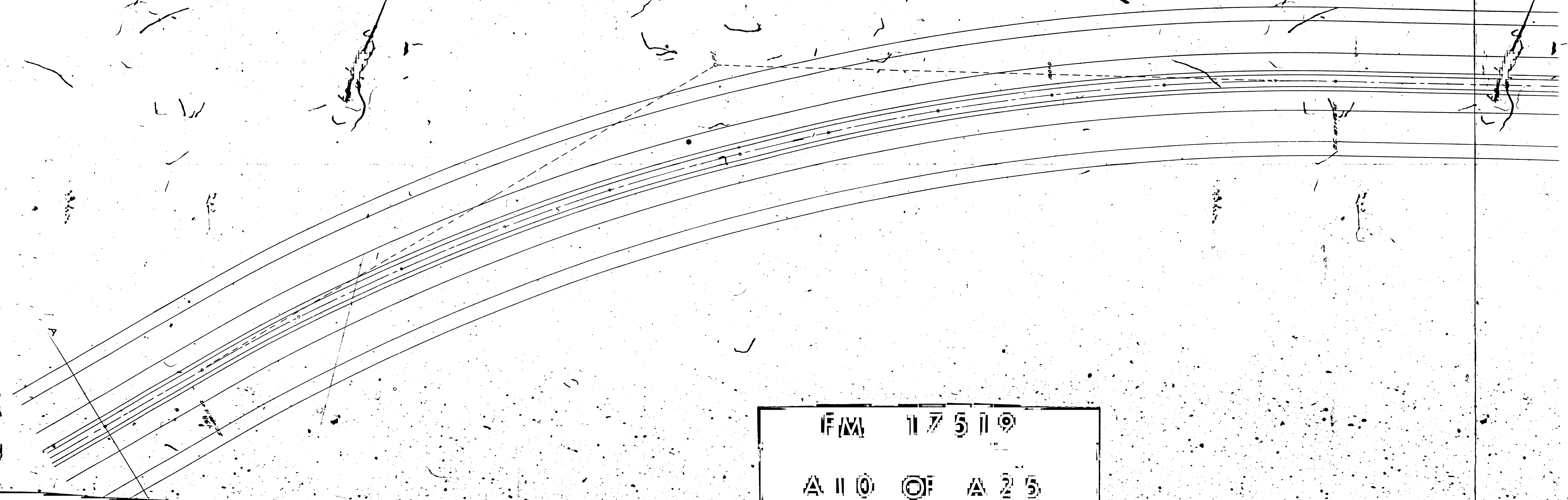
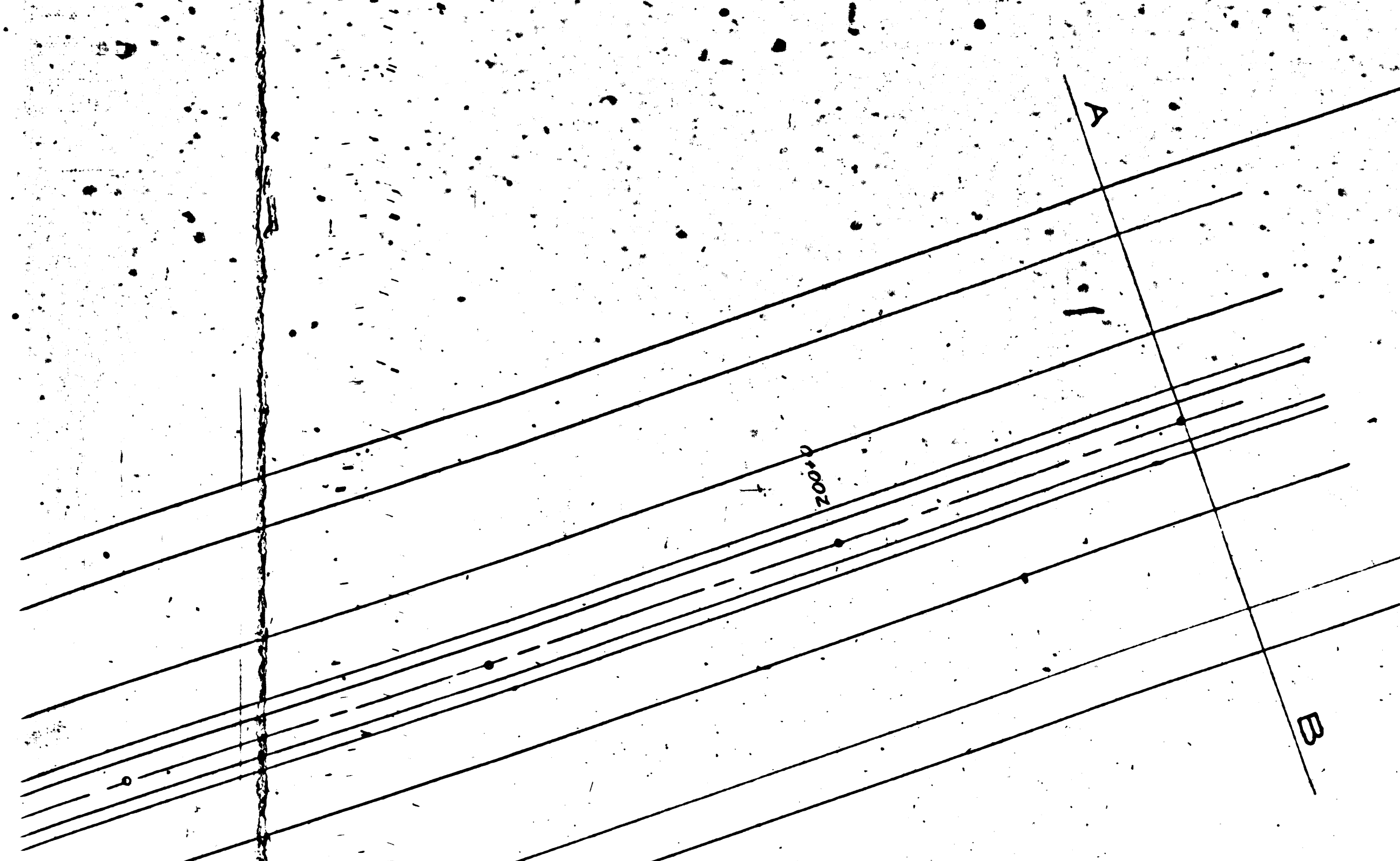


F/M 117519

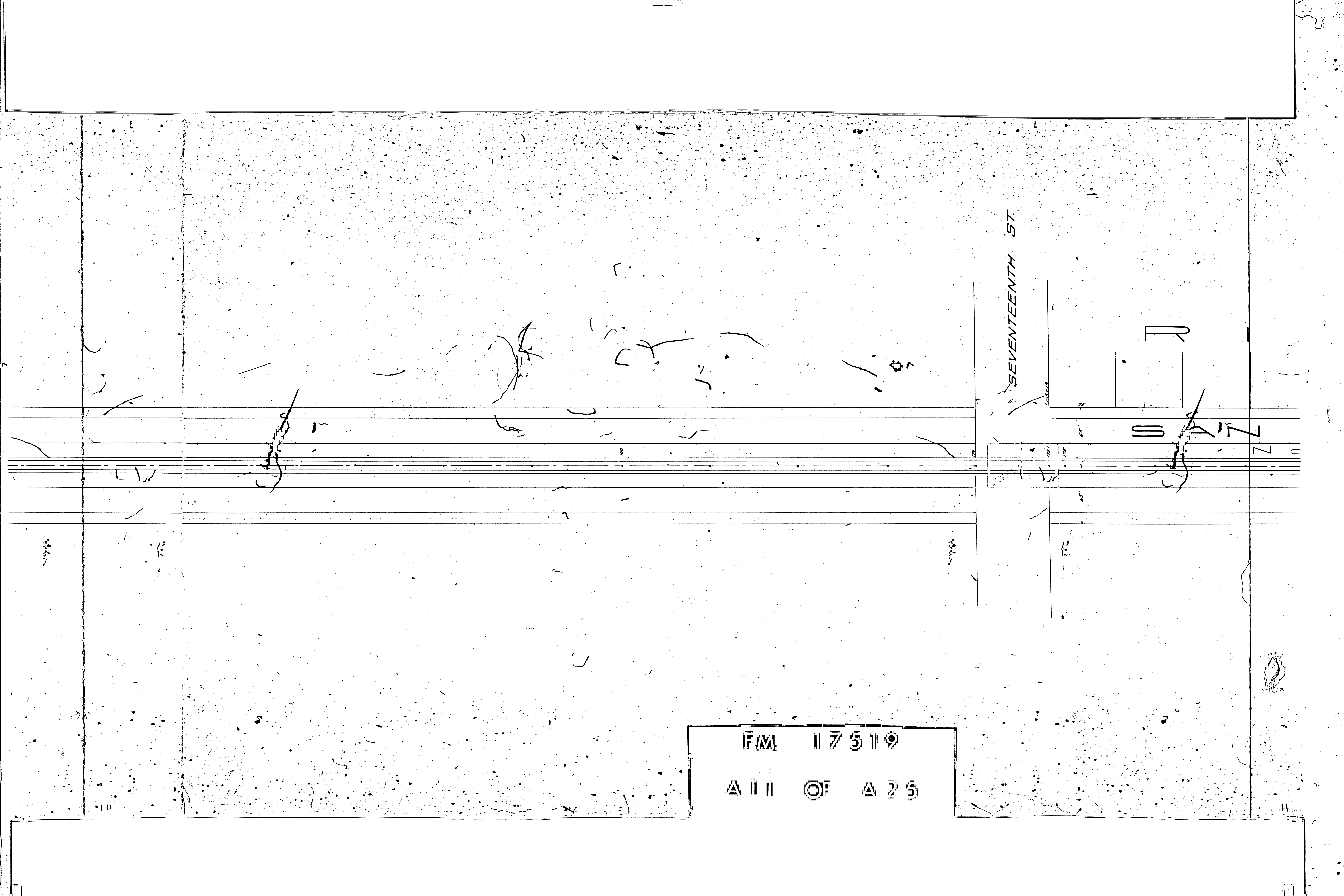
A 8 OF A 25



F/M 117519
A 9 OF A 2/5

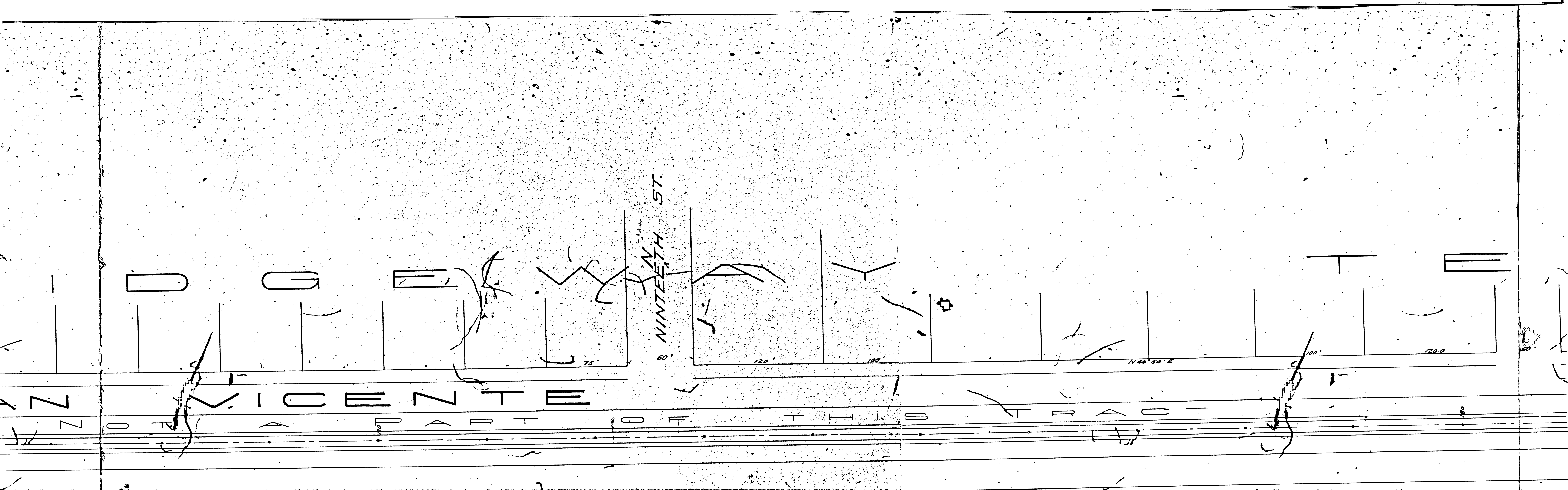


F/M 17519
A 10 OF A 25

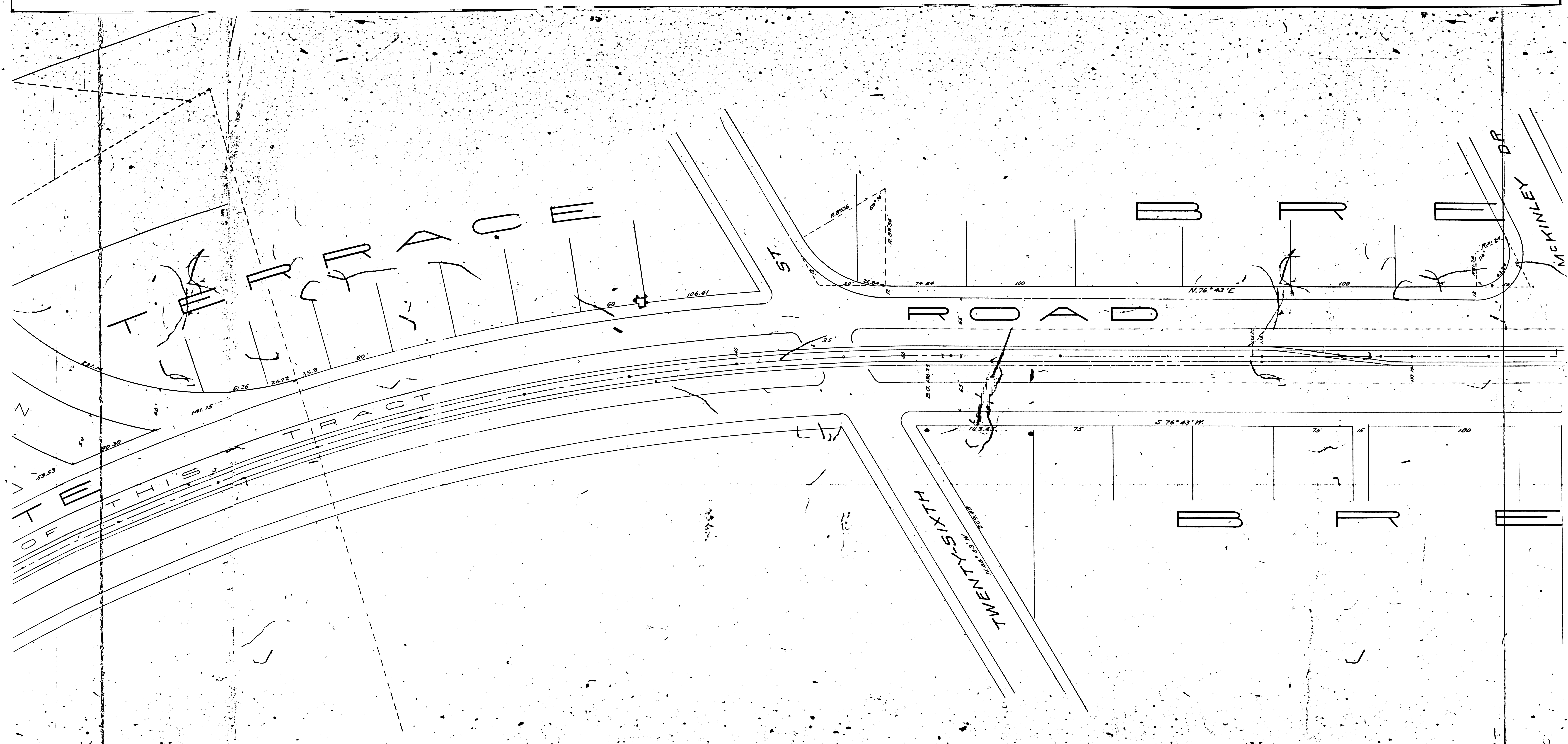


SEVENTEENTH ST.

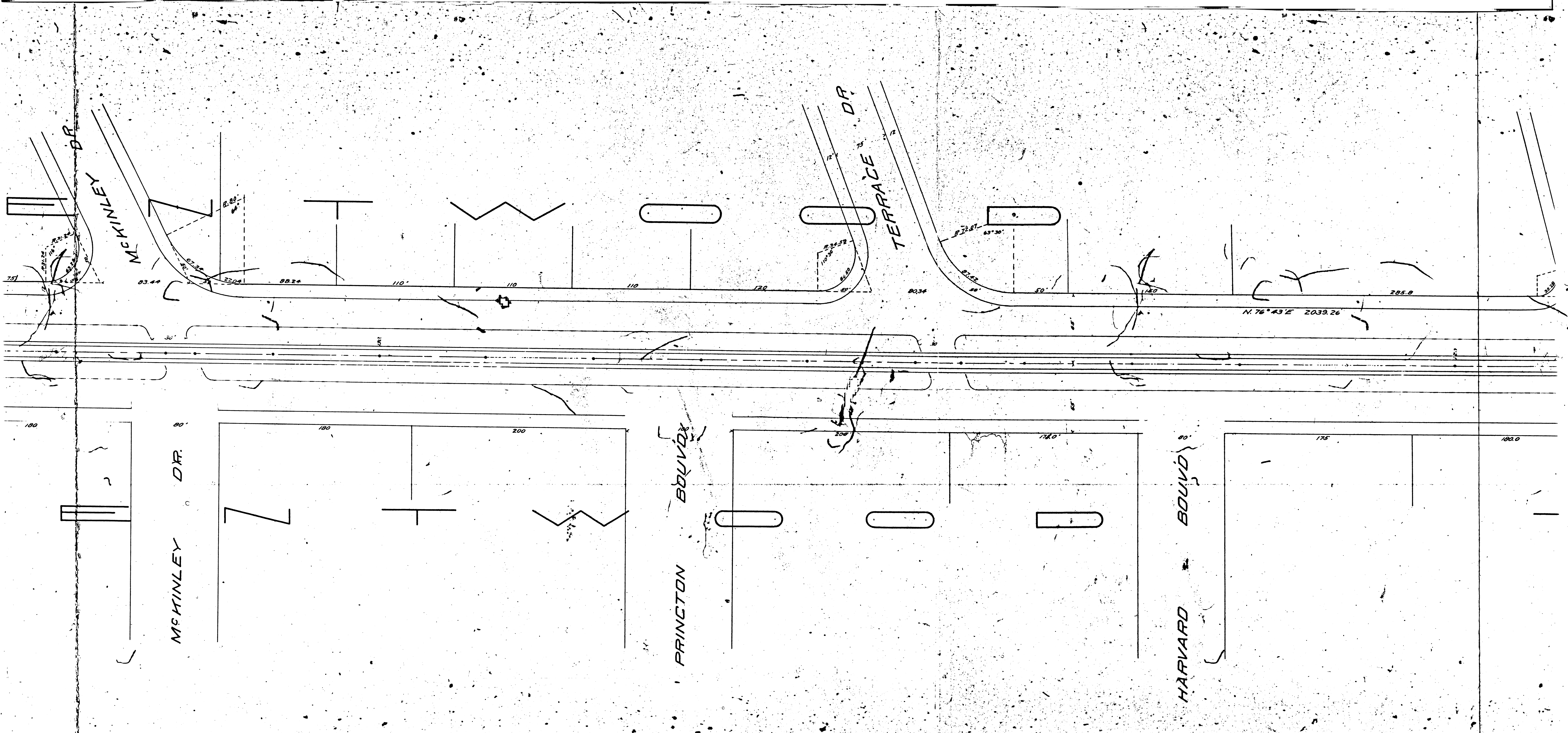
F.M. 117519
A 11 OF A 25



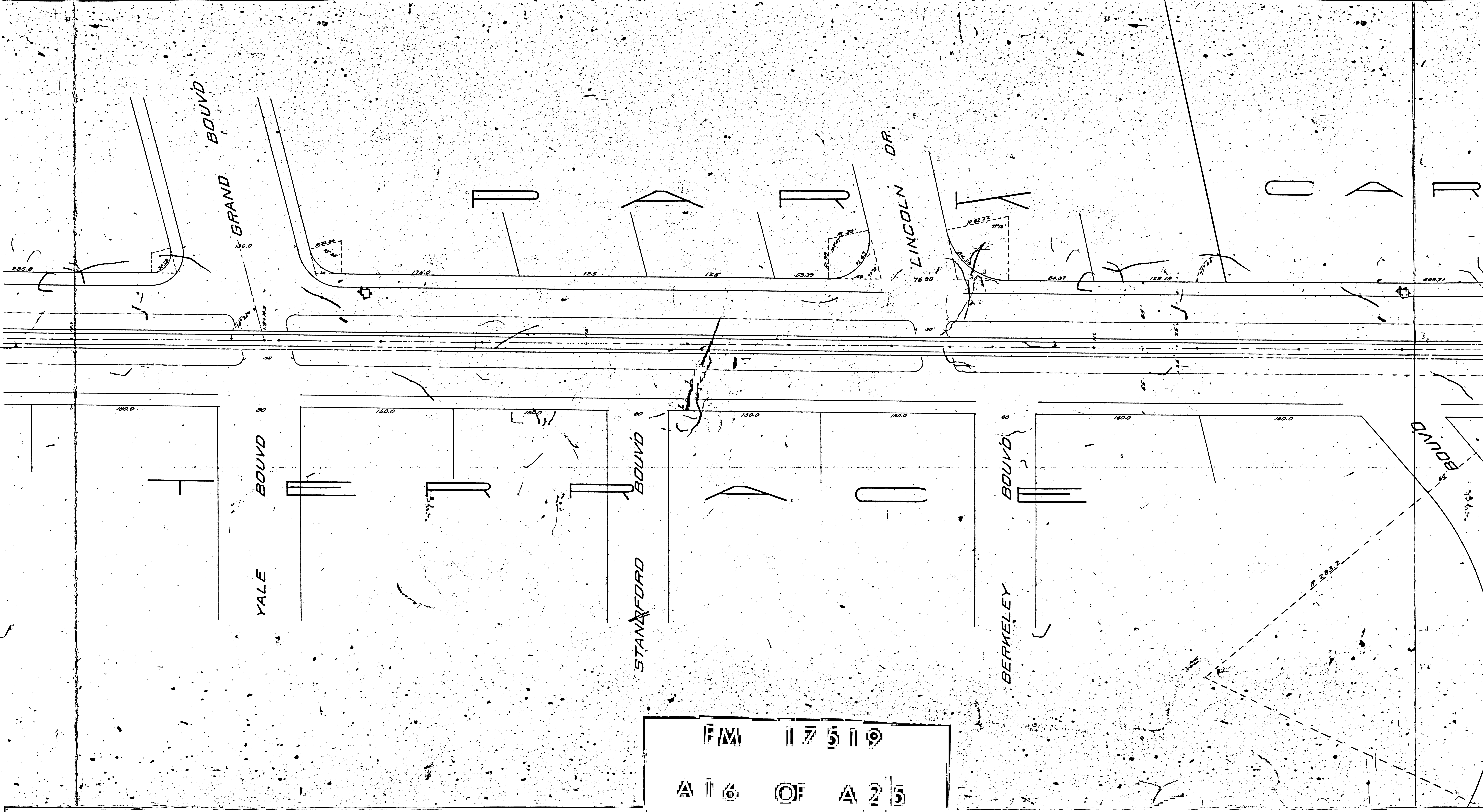
PM 17519
A 11 2 OF A 25



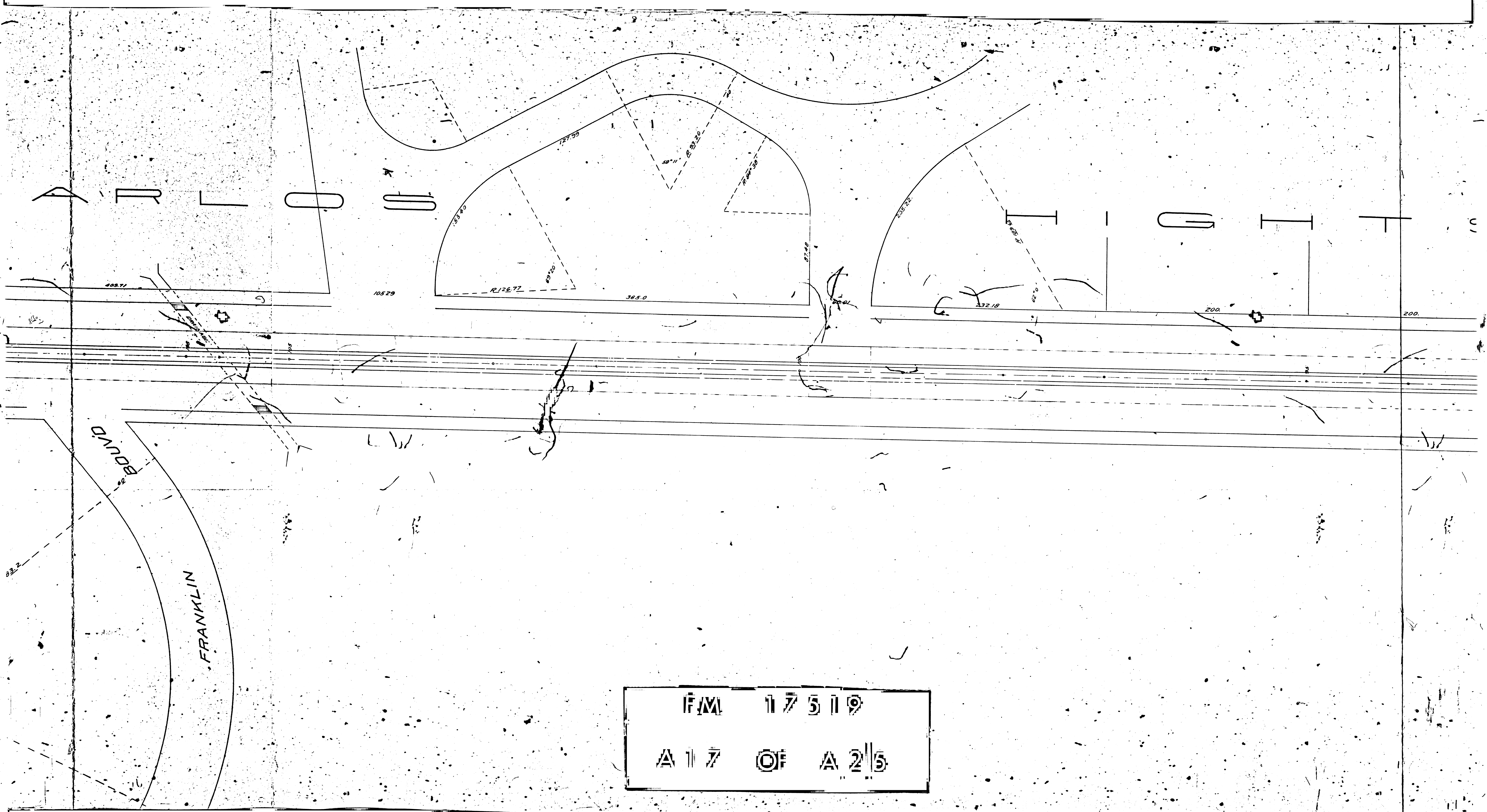
F.M. 17519
 A 14 OF A 25



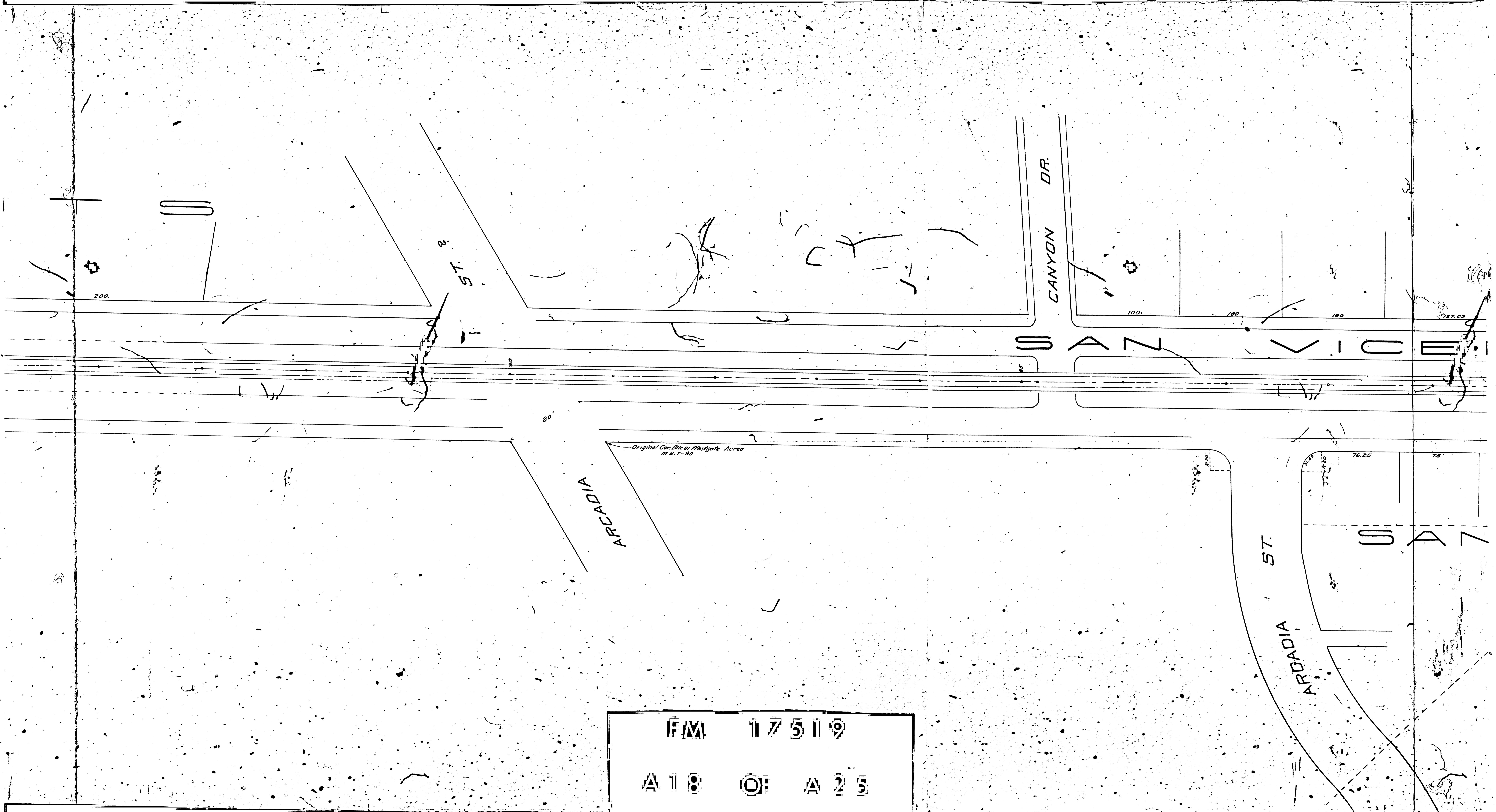
F.M. 117519
 A 15 OF A 25



F/M 117519
 A 16 OF A 25



F/M 17519
 A 17 OF A 215



F/M 17519
A 18 OF A 25

Original Cor. Plat. of Westgate Acres
M.B. 7-92

ARCADIA

CANYON DR.

ST.

ARCADIA

200.

100.

100.

100.

127.02

76.25

75

SALTAIR AVE

JEFFERSON AVE

AVE

MONTANA

SAN VICENTE PARK

F/M 117519

A 19 OF A 25

127.02

60'

100'

100'

69.80

78.10

N 76° 43' E 1106.74

275

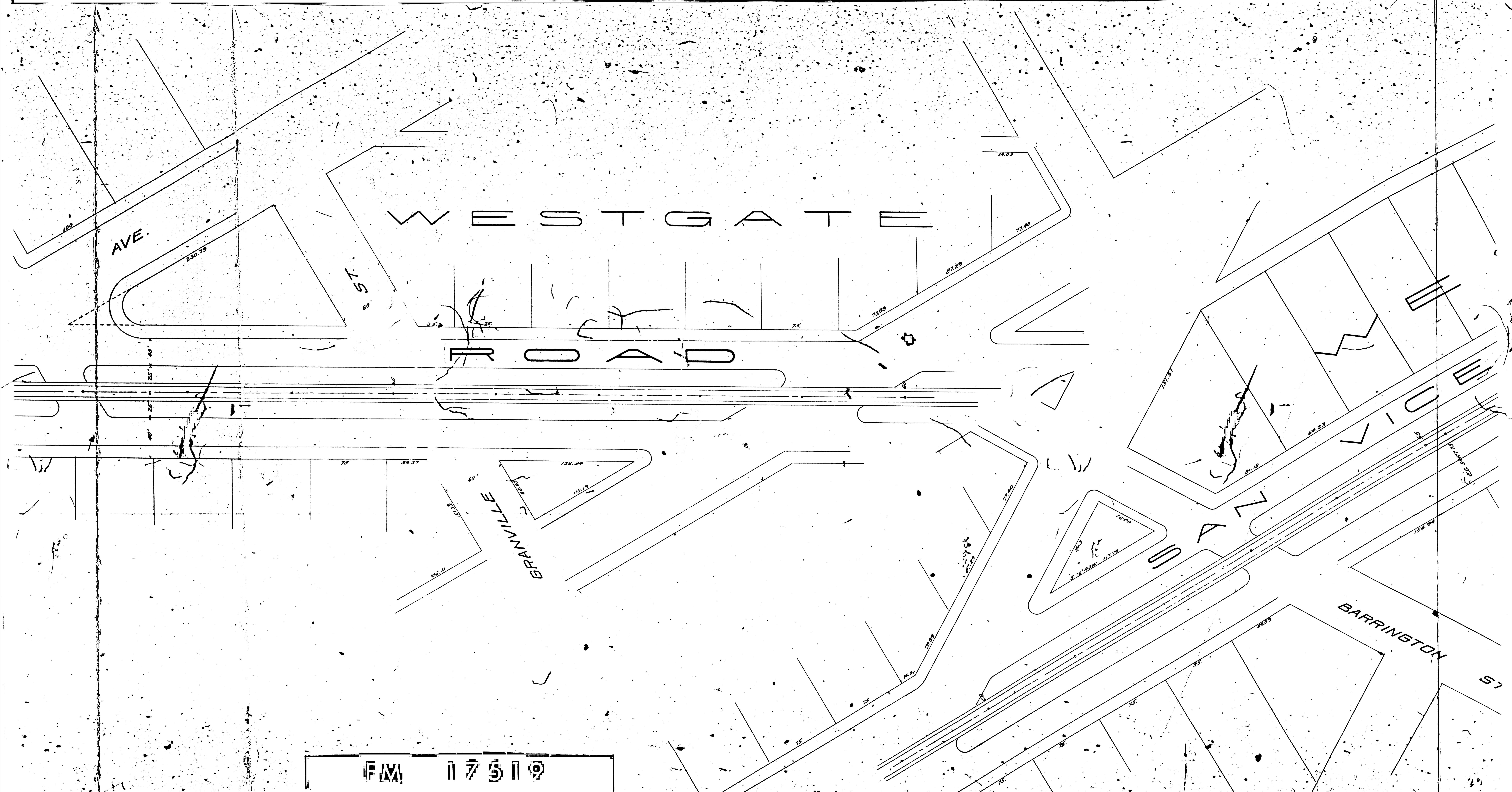
365.49

78.18

74.09

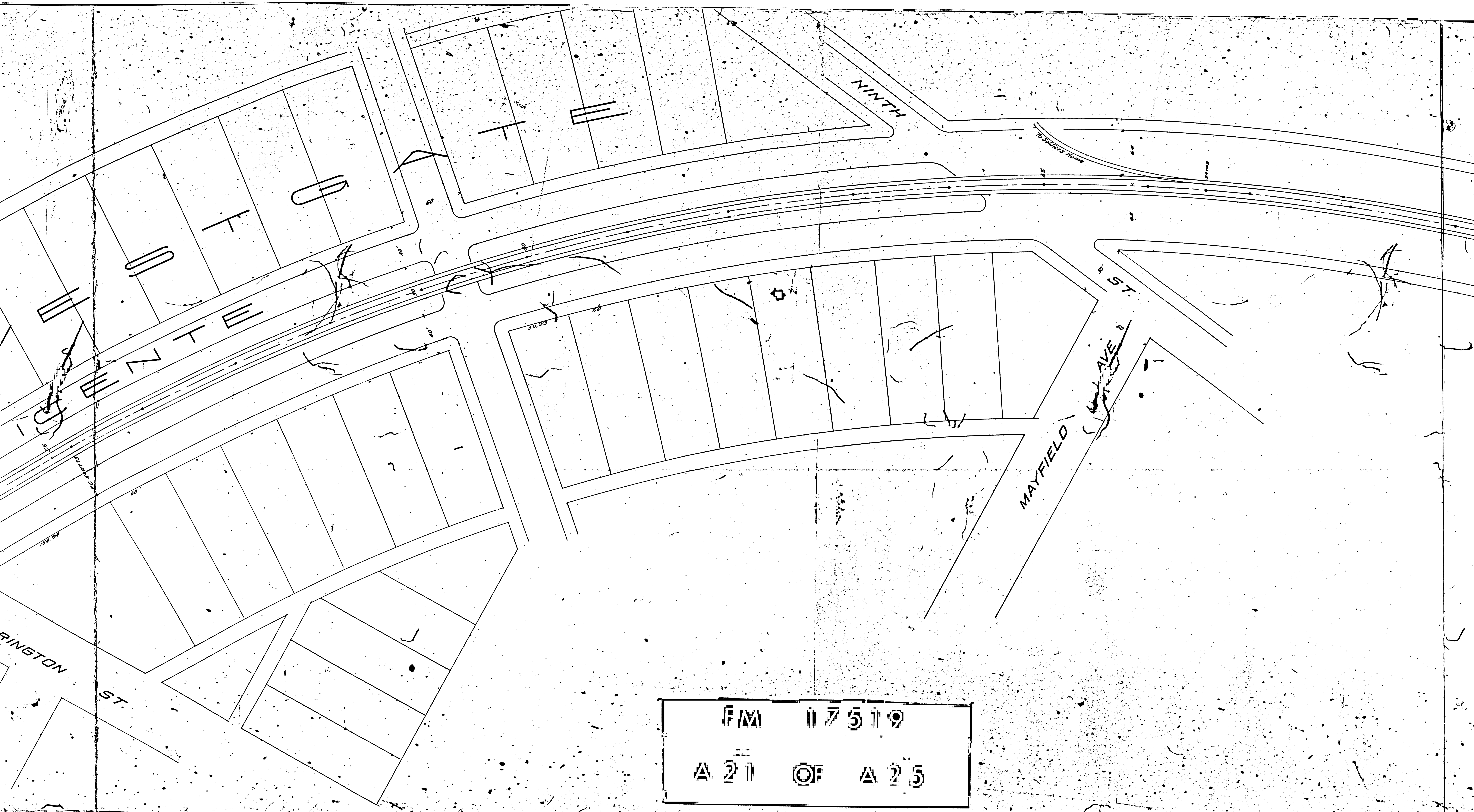
342.10

75



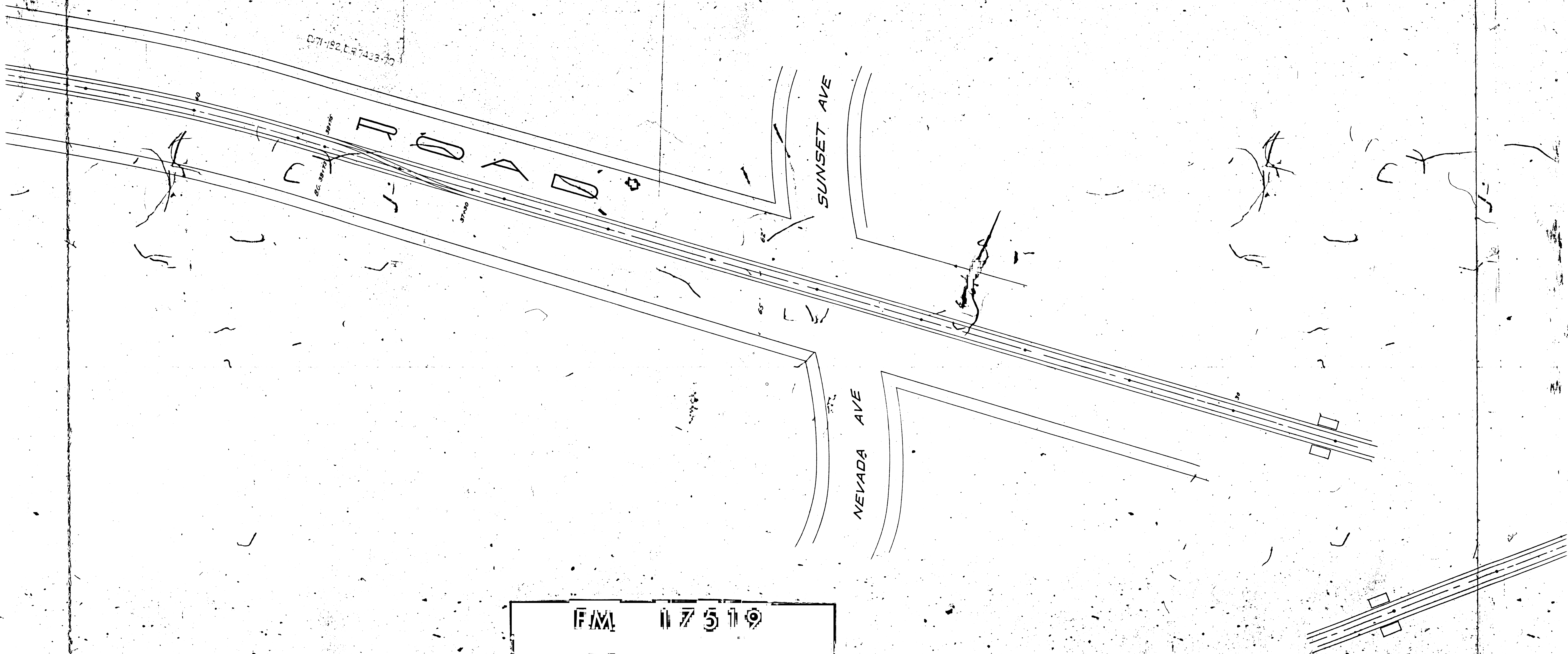
FAX 117519

A 20 OF A 25



F/M 117519
A 21 OF A 25

D71-192, CR 7433-10



F.M. 17519
A 22 OF A 25



ROCHESTER AVE

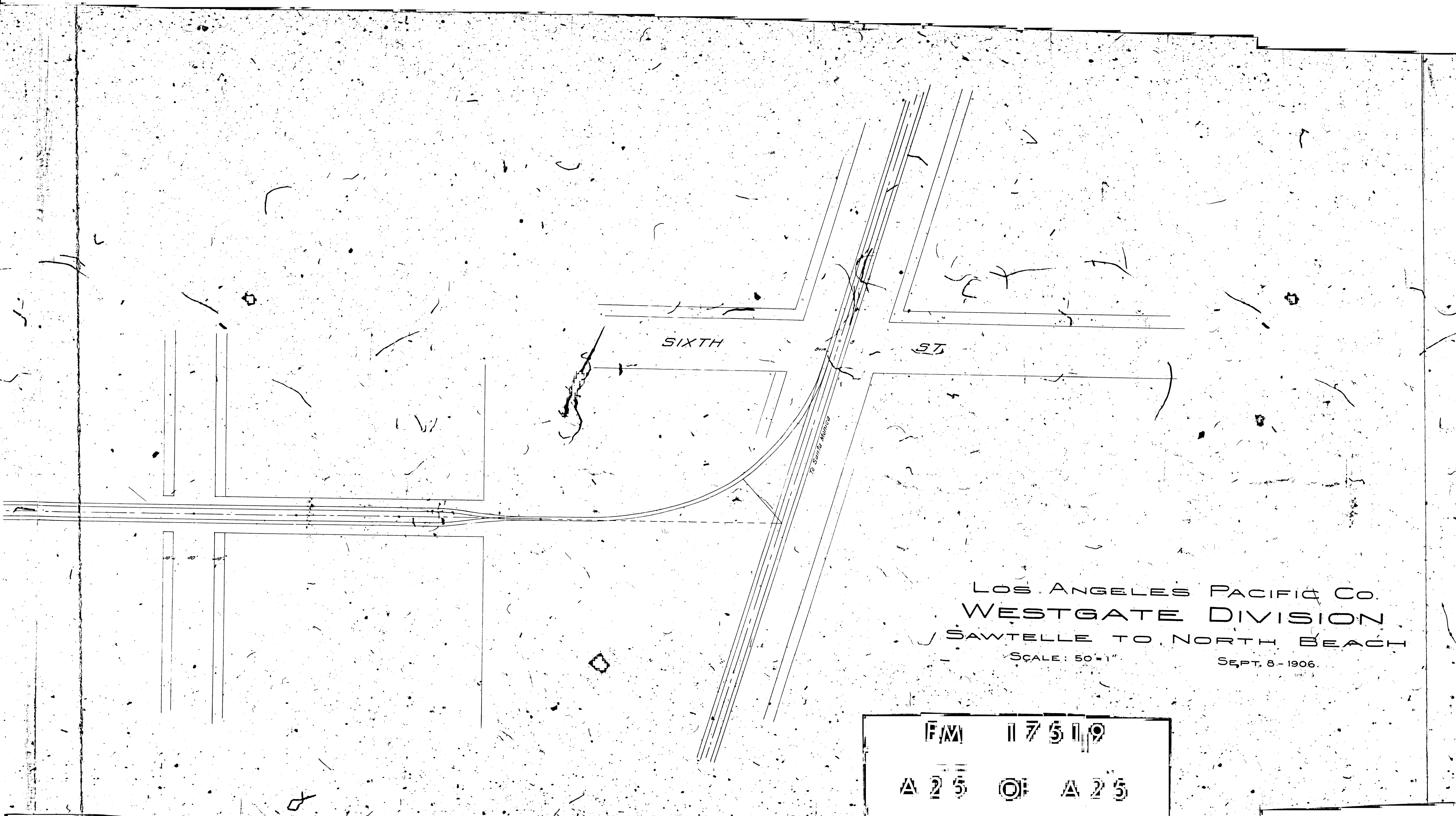
F/M 17519
A 23 OF A 25

ROCHESTER AVE

SIXTH

FAX 117519

A 24 OF A 25



LOS ANGELES PACIFIC CO.
WESTGATE DIVISION
SAWTELLE TO NORTH BEACH

SCALE: 50'-1"

SEPT. 8 - 1906.

F/M 17519
A 25 OF A 25