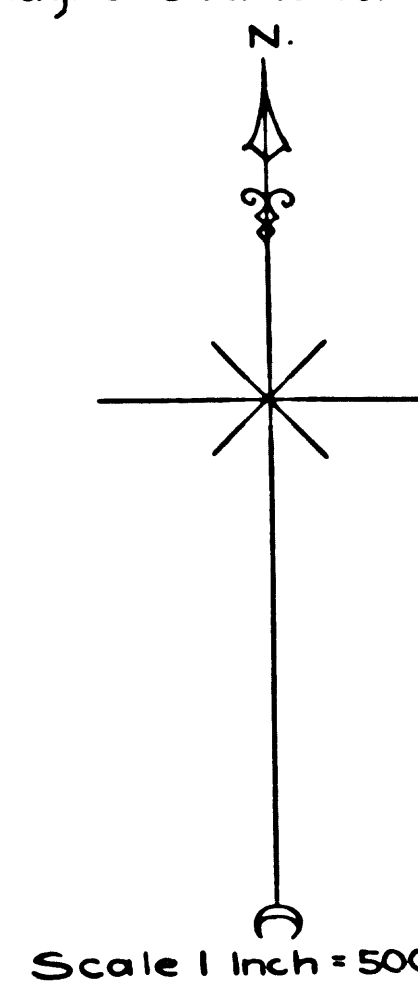


MAP  
SHOWING THE DEFINITE LOCATION OF THE  
PACIFIC ELECTRIC RAILWAY COMPANY'S  
RAILWAY LINE  
FROM RUBIO TO ALPINE TAVERN.

As described in the Act of Congress approved February 28<sup>th</sup> 1899 entitled  
"An Act to grant to the Pasadena and Mt. Wilson Railway Company the  
Right of Way and certain lands for Railroad purposes through the San  
Gabriel Forest Reserve" in Los Angeles County California.  
Survey commenced on the 11<sup>th</sup> day of October 1904 and  
ended the 3<sup>rd</sup> day of April 1905 by L. Friel  
Magnetic Variation 14° 12' E.



Owing to the many changes of direction of the alignment of the railroad, it was absolutely necessary to increase the scale to 500 feet to an inch to correctly show the beginning, ending and radius of all the curves.

Scale 1 inch = 500 Feet  
IM 88  
M 50

State of California } ss  
County of Los Angeles }

L. Friel being duly sworn, says he is the person employed to make the survey by the Pacific Electric Railway Company; that the survey of the said company's line of railroad described as follows: from the Initial Point in the N.W. 1/4 of section 2, T. 1 N., R. 12 W., S. B. B. and M., from which the center of section 3, T. 1 N., R. 12 W., S. B. B. and M., bears S. 57° 19' 28" W., 3307.23 feet, and the corner of sections 2, 3, 10 and 11, T. 1 N., R. 12 W., S. B. B. and M., bears S. 1° 49' 22" W., 4540.98 feet distant, and the corner of sections 3, 4, 33 and 34, T. 1 and 2 N., R. 12 W., S. B. B. and M., bears N. 81° 45' 38" W., 5600.09 feet distant, and a live oak 12 inches in diameter marked S.G.F.R. on N., R. 12 W., S. 3, W. C., on S.W. and T. 1 N., S. 2, on S.E. sides bears N. 55° 23' W., 1266.87 feet distant; thence in a northerly direction through surveyed land a length of 0.172 miles to a point in the north line of section 3, T. 1 N., R. 12 W., S. B. B. and M., from which the corner to sections 3, 4, 33 and 34, T. 1 and 2 N., R. 12 W., S. B. B. and M., bears due west 5116 feet distant; thence in a northerly and northeasterly direction through unsurveyed land a length of 3.84 miles to Terminal Point from which the corner to sections 3, 4, 33 and 34, T. 1 and 2 N., R. 12 W., S. B. B. and M., bears S. 47° 37' 17" W., 10358.76 feet distant, a total length of 4.014 miles, was made by him as surveyor employed by the Company and under its authority, commencing on the 11<sup>th</sup> day of October 1904 and ending on the 3<sup>rd</sup> day of April 1905; and that the survey of the said line is accurately represented on this map and by the accompanying field notes, and that said railroad has actually been constructed on the line of said survey and is being operated daily for the carriage of freight and passengers.

L. Friel (copy)

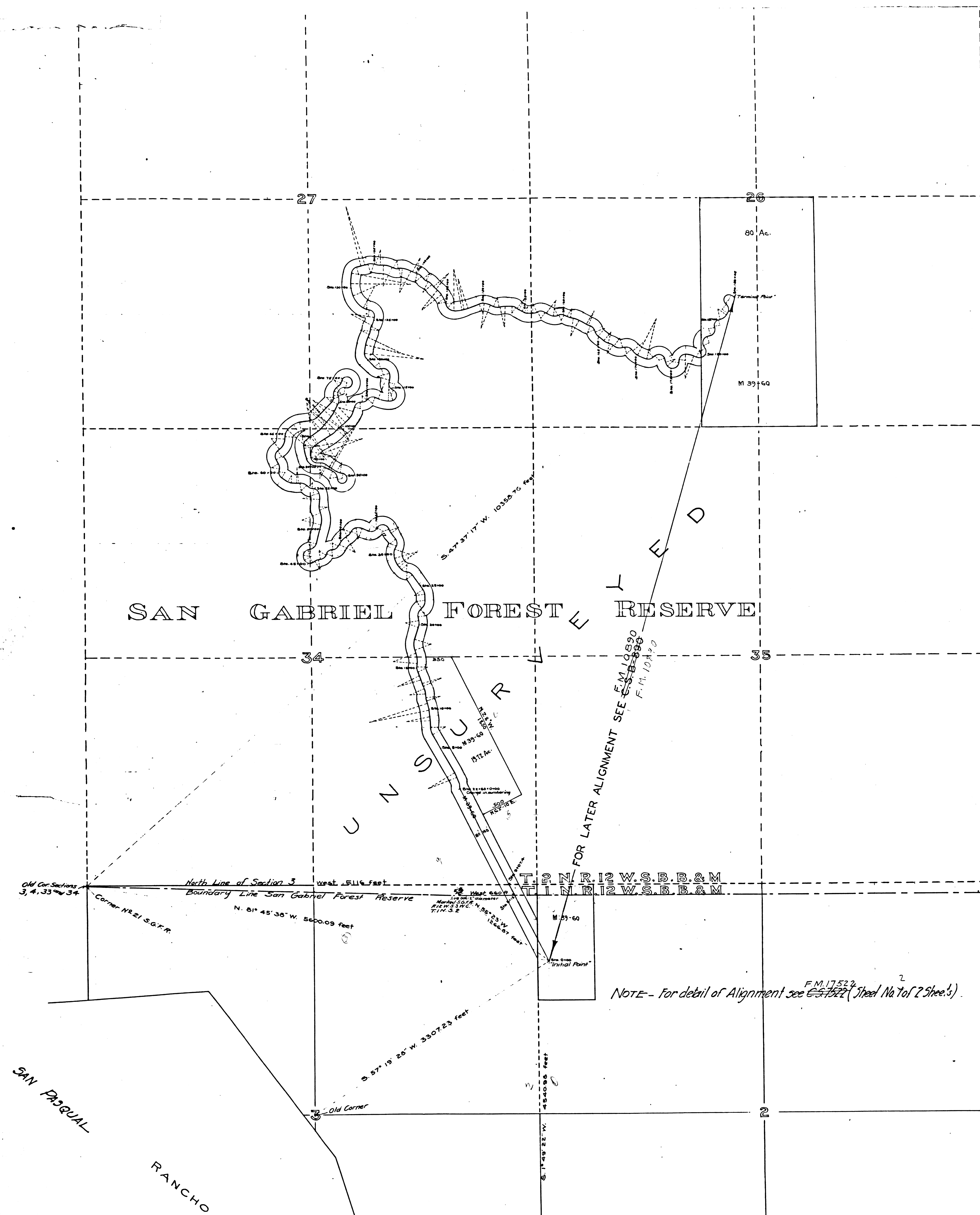
Sworn and subscribed to before me this 4<sup>th</sup> day of April 1905  
Mary A. Connor (copy)  
Notary Public.

I, H. E. Huntington do hereby certify that I am the President of the Pacific Electric Railway Company; that L. Friel, who subscribed the accompanying affidavit, was employed to make the survey by the said company; that the survey of the said railroad, as accurately represented on this map and by the accompanying field notes, was made under authority of the company; that the company is duly authorized by its articles of incorporation to construct the said railroad upon the location shown upon this map; that the said survey as represented on this map and by said field notes was adopted by resolution of its board of directors on the 19<sup>th</sup> day of June 1905, as the definite location of the said railroad, described as follows: from the Initial Point in the N. W. 1/4 of section 2, T. 1 N., R. 12 W., S. B. B. and M., from which the center of section 3, T. 1 N., R. 12 W., S. B. B. and M., bears S. 57° 19' 28" W., 3307.23 feet, and the corner of sections 2, 3, 10 and 11, T. 1 N., R. 12 W., S. B. B. and M., bears S. 1° 49' 22" W., 4540.98 feet distant, and the corner of sections 3, 4, 33 and 34, T. 1 and 2 N., R. 12 W., S. B. B. and M., bears N. 81° 45' 38" W., 5600.09 feet distant, and a live oak 12 inches in diameter marked S.G.F.R. on N., R. 12 W., S. 3, W. C., on S.W. and T. 1 N., S. 2, on S.E. sides bears N. 55° 23' W., 1266.87 feet distant; thence in a northerly direction through surveyed land a length of 0.172 miles to a point in the north line of section 3, T. 1 N., R. 12 W., S. B. B. and M., from which the corner to sections 3, 4, 33 and 34, T. 1 and 2 N., R. 12 W., S. B. B. and M., bears due west 5116 feet distant; thence in a northerly and northeasterly direction through unsurveyed land a length of 3.842 miles to Terminal Point, from which the corner to sections 3, 4, 33 and 34, T. 1 and 2 N., R. 12 W., S. B. B. and M., bears S. 47° 37' 17" W., 10358.76 feet distant, a total length of 4.014 miles; and that this map has been prepared to be filed in order to obtain the benefits of the act of Congress approved March 3<sup>rd</sup> 1875 entitled "An Act granting to railroads the Right of Way through the public lands of the United States" and the Act of Congress approved February 28<sup>th</sup> 1899 entitled "An Act to grant to the Pasadena and Mount Wilson Railway Company, Right of Way through the San Gabriel Forest Reserve." I further certify that the said railroad has heretofore been constructed on the line of said survey; and that said railroad is being and is to be operated as a common carrier of passengers and freight.

(Signed) H. E. Huntington President  
of the Pacific Electric Railway Company

(Signed) S. C. Baxter

Attest  
Seal



NOTE - For detail of Alignment see 657522 (Sheet No. 1 of 2 Sheets)

F.M. 117522-1