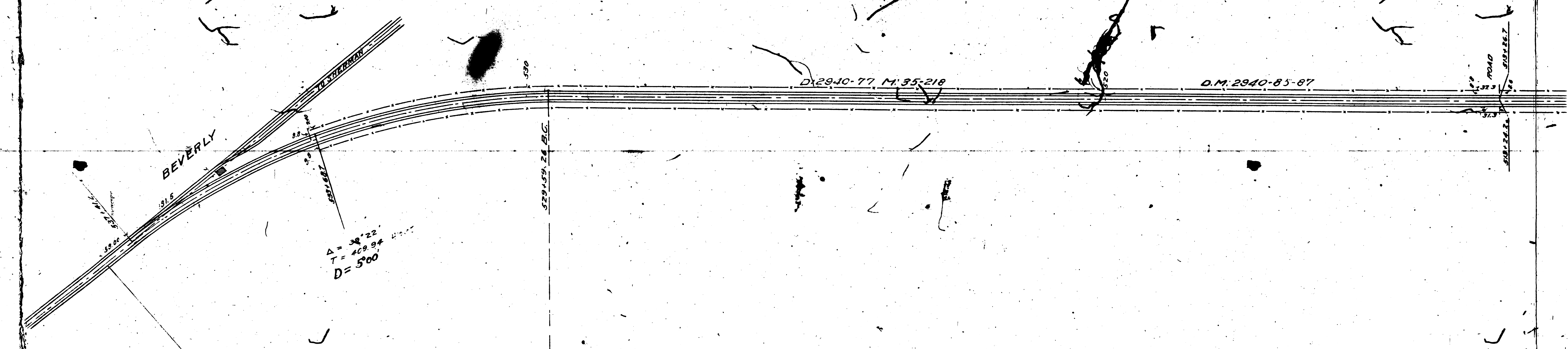


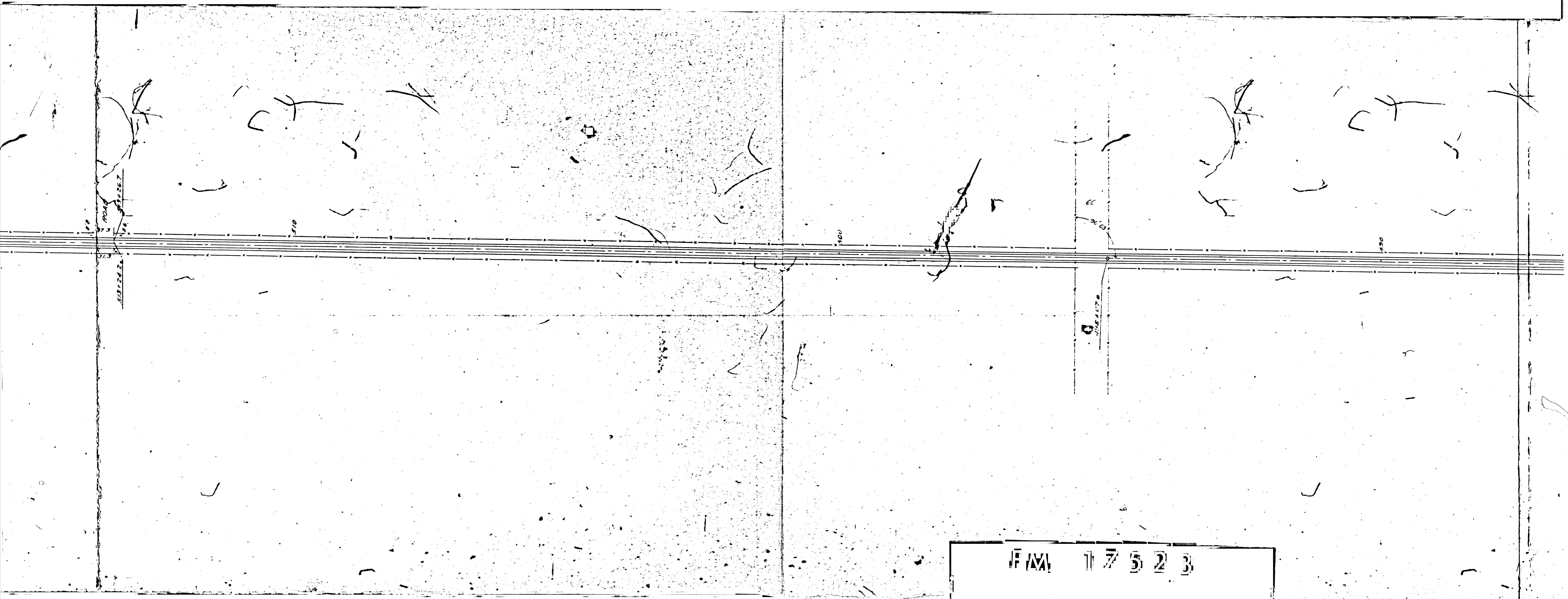
LOS ANGELES PACIFIC CO  
LINE FROM L.A. CITY LIMITS  
TO BEVERLY

Scale 1"=100'

PLATTED FROM LAPCOS FIELD BOOK.  
July, 1908.

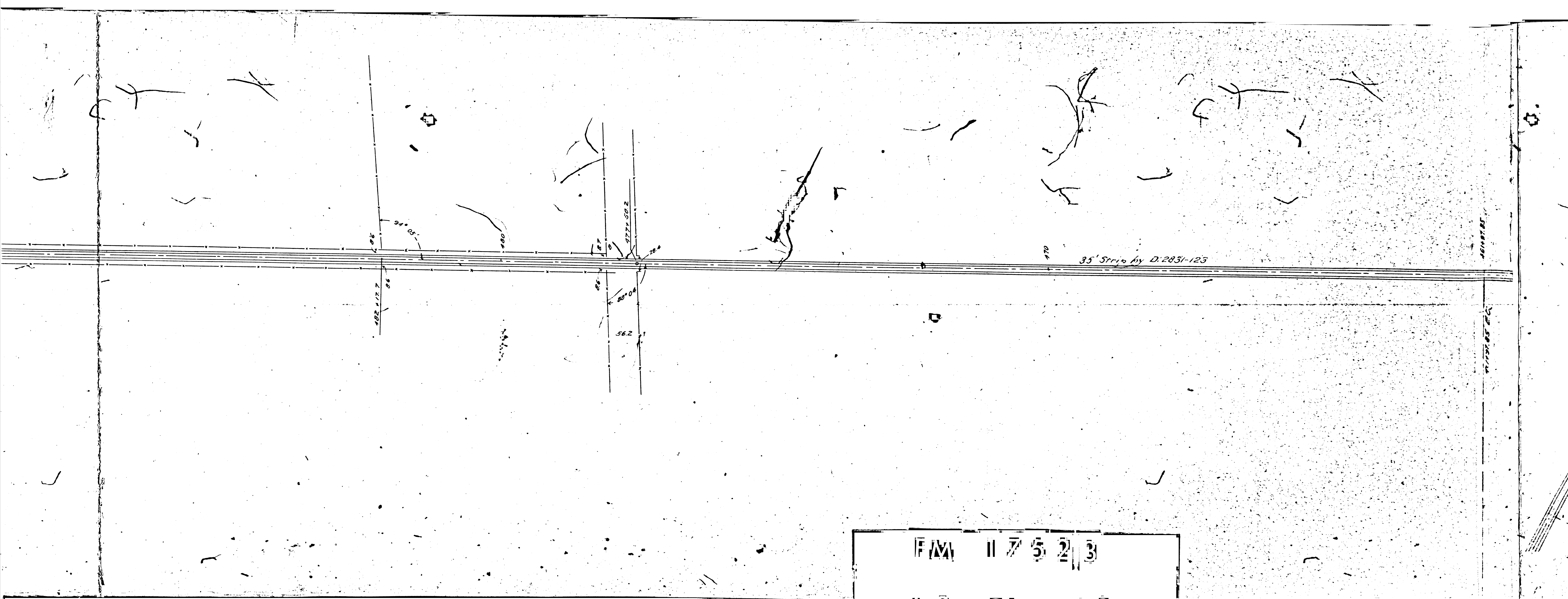


F.M. 17523  
A1 OF A12



F/A 17523

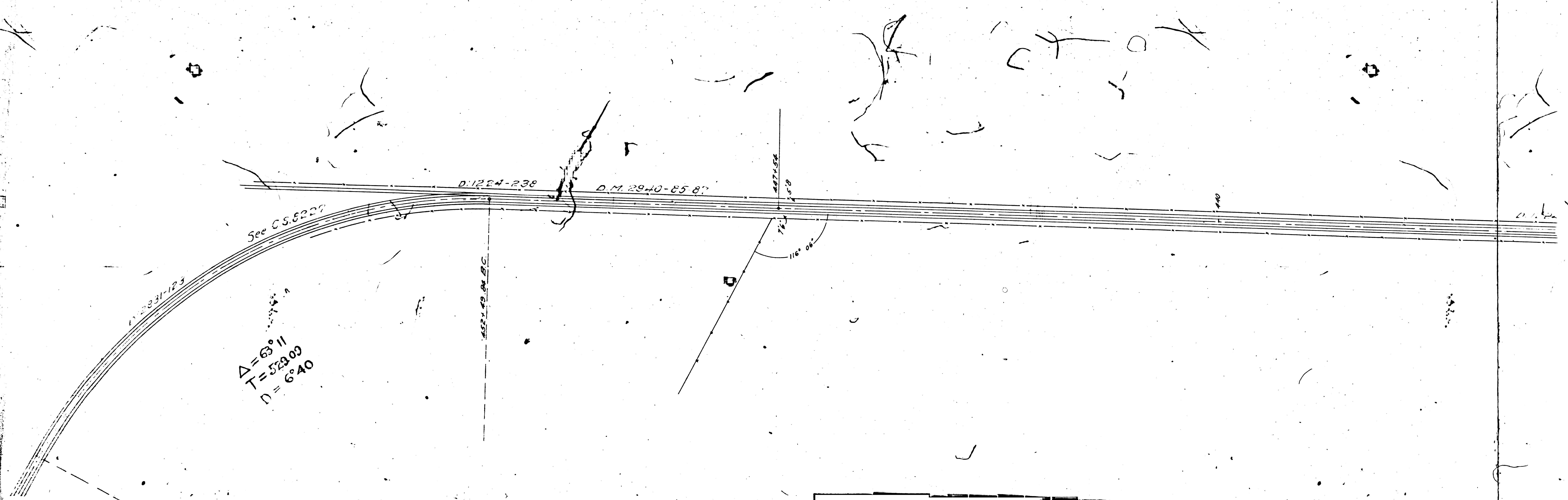
A 2 OF A 12



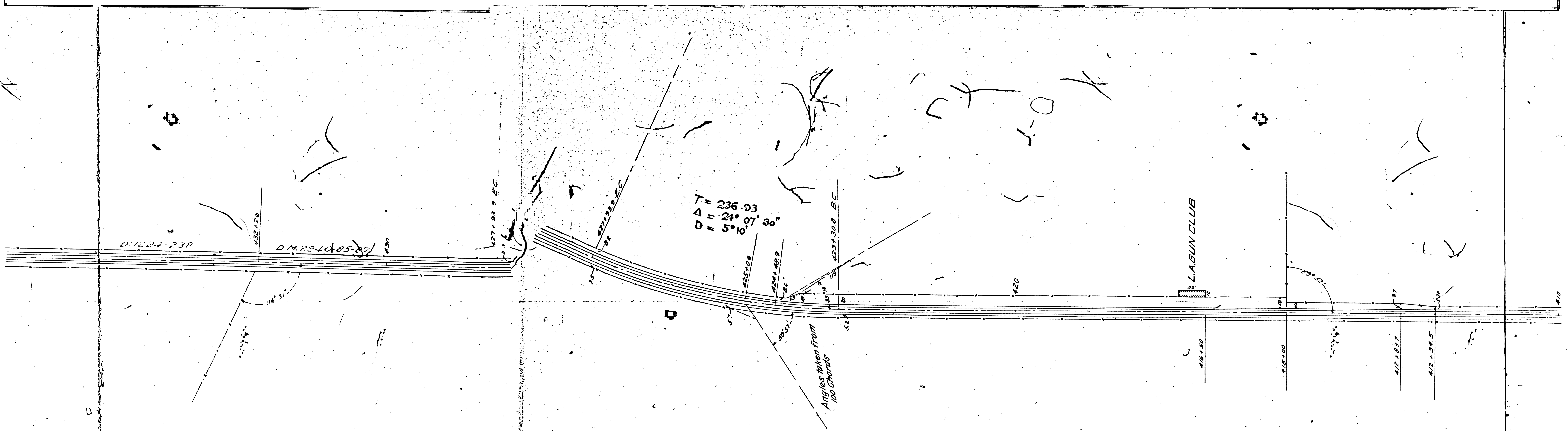
F/M 11 7 5 2 3

A 3 OF A 1 2

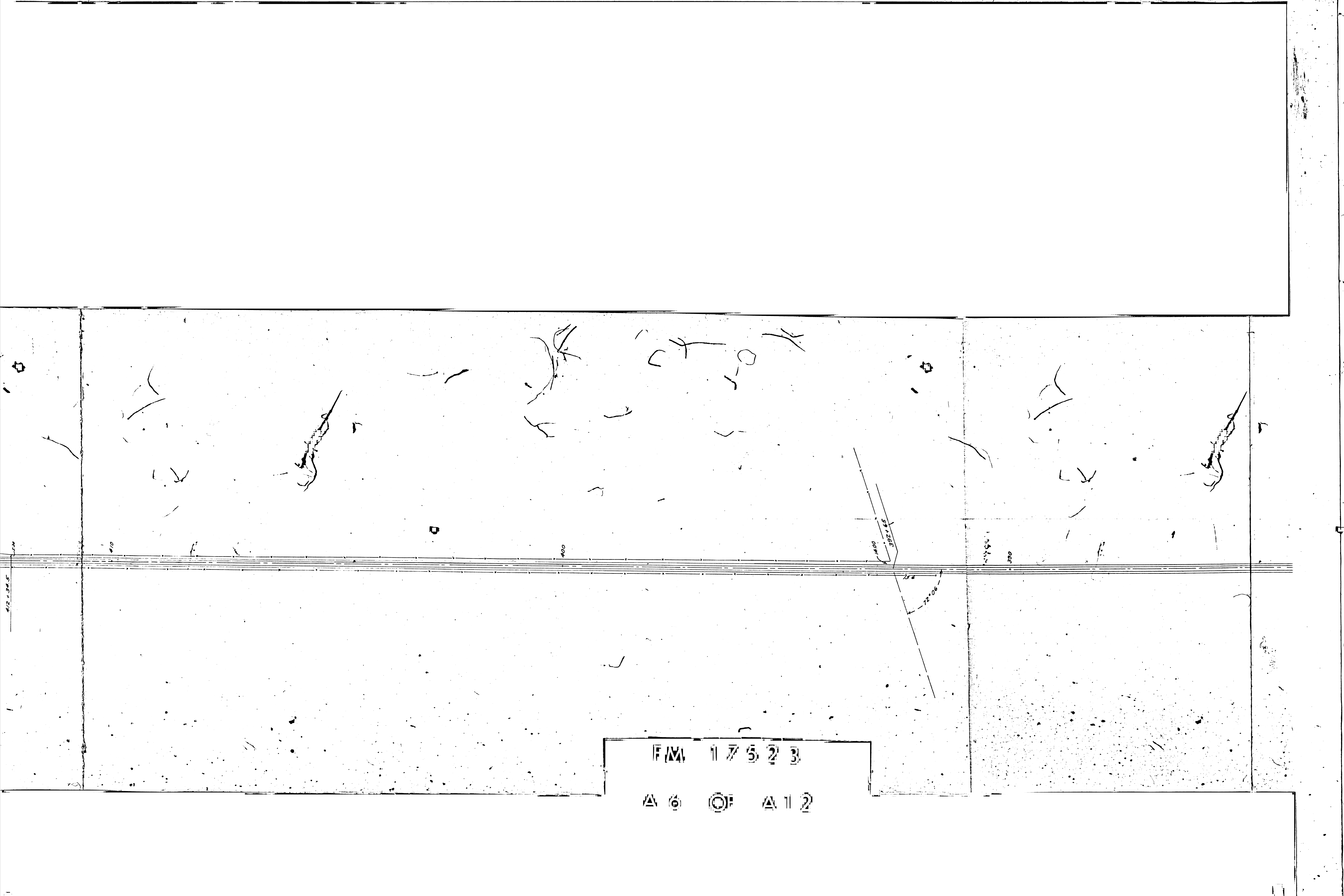
46147.85  
46147.85



F/W 11 7 5 2 3  
A 4 OF A 1 2



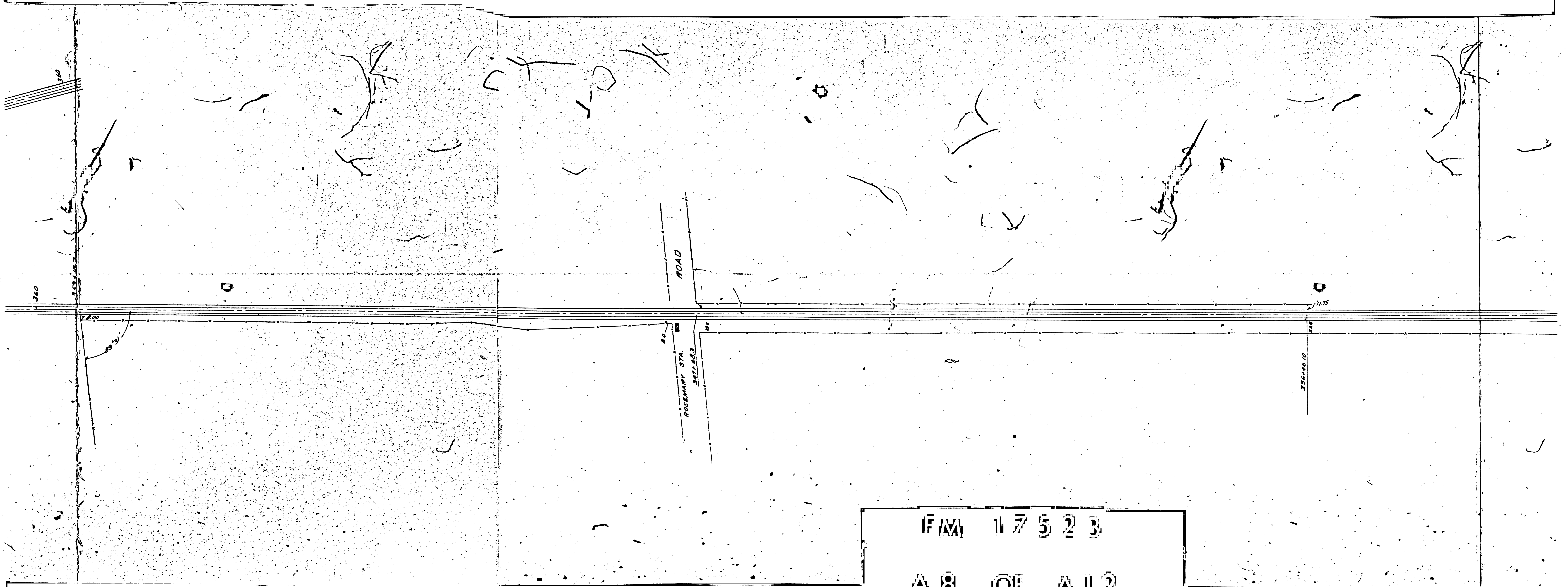
F/M 117523  
 A 3 OF A 12



F/M 17523

△ 6    ⊙ F    △ 12





F/M 1 7 5 2 3  
A 8 OF A 1 2





PICO ST.  
ST.

POWER HOUSE

BATTERY

STATION

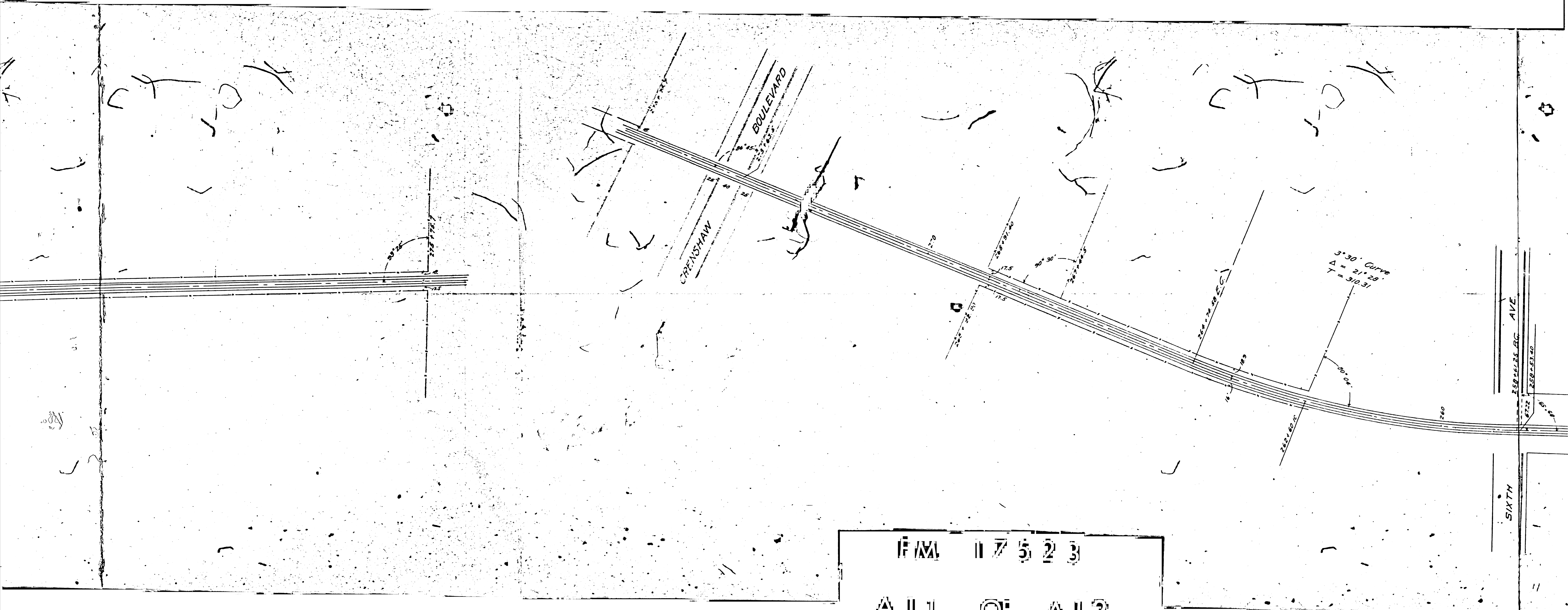
TO VENICE

293+01.5 P.S.  
P.I. 292+65.75 Δ 2°15'30"

292+66.0  
292+92.5 P.S.

F/M 11 7 5 2 3

Δ 11 0 ○ 11 2



IF/AL 117523

△ 11 ○ OF △ 11 2

SIXTH AVENUE

CRENSHAW BOULEVARD

3°30' Curve  
 $\Delta = 21^{\circ}29'$   
 $T = 310.31$

221+89.60

221+00.00

260

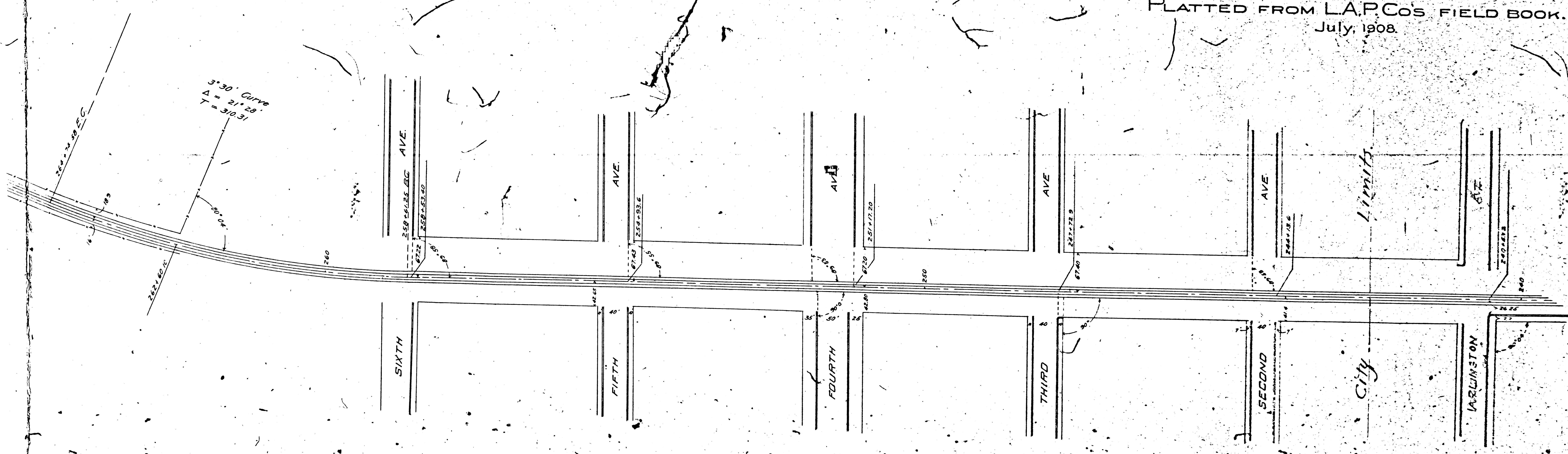
232+53.10

SIXTH

LOS ANGELES PACIFIC CO  
LINE FROM L.A. CITY LIMITS  
TO BEVERLY

Scale: 1"=100'

PLATTED FROM L.A.P.CO'S FIELD BOOK.  
July, 1908.



PLAN 17523

A 12 OF A 12