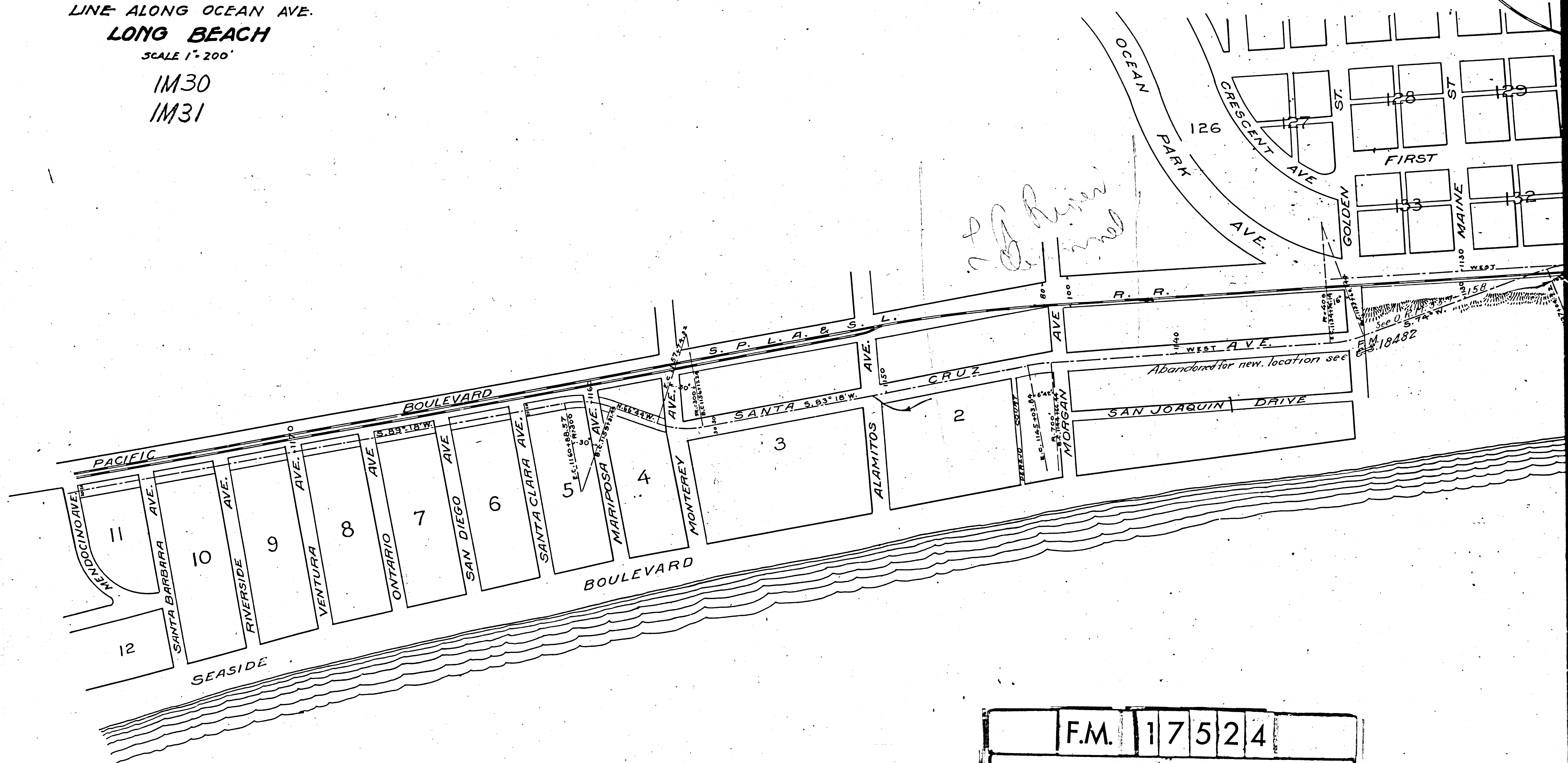


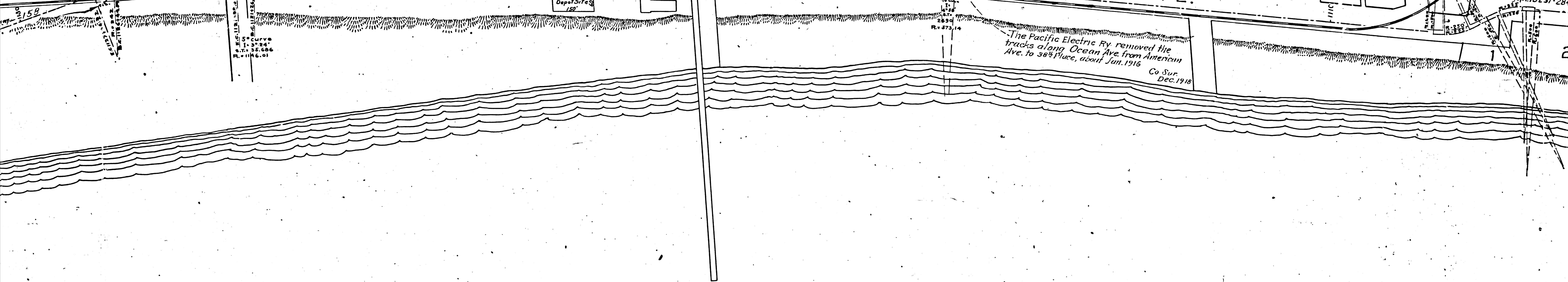
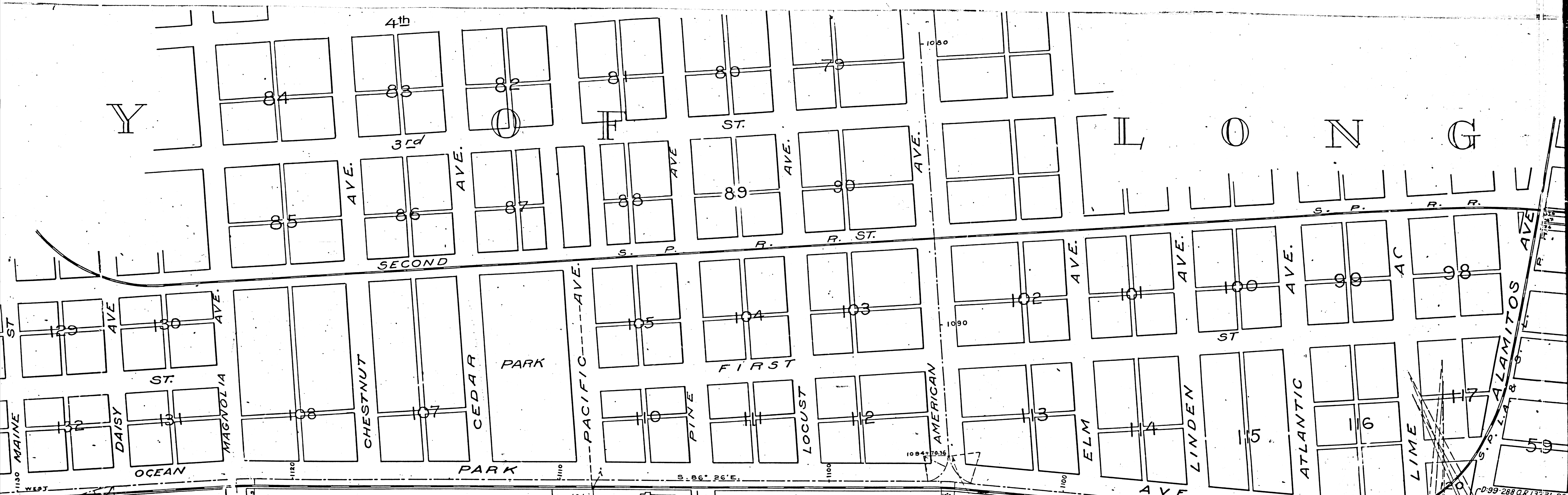
C I T

PACIFIC ELECTRIC RAILWAY
LINE ALONG OCEAN AVE.
LONG BEACH
SCALE 1" = 200'

1M30
1M31



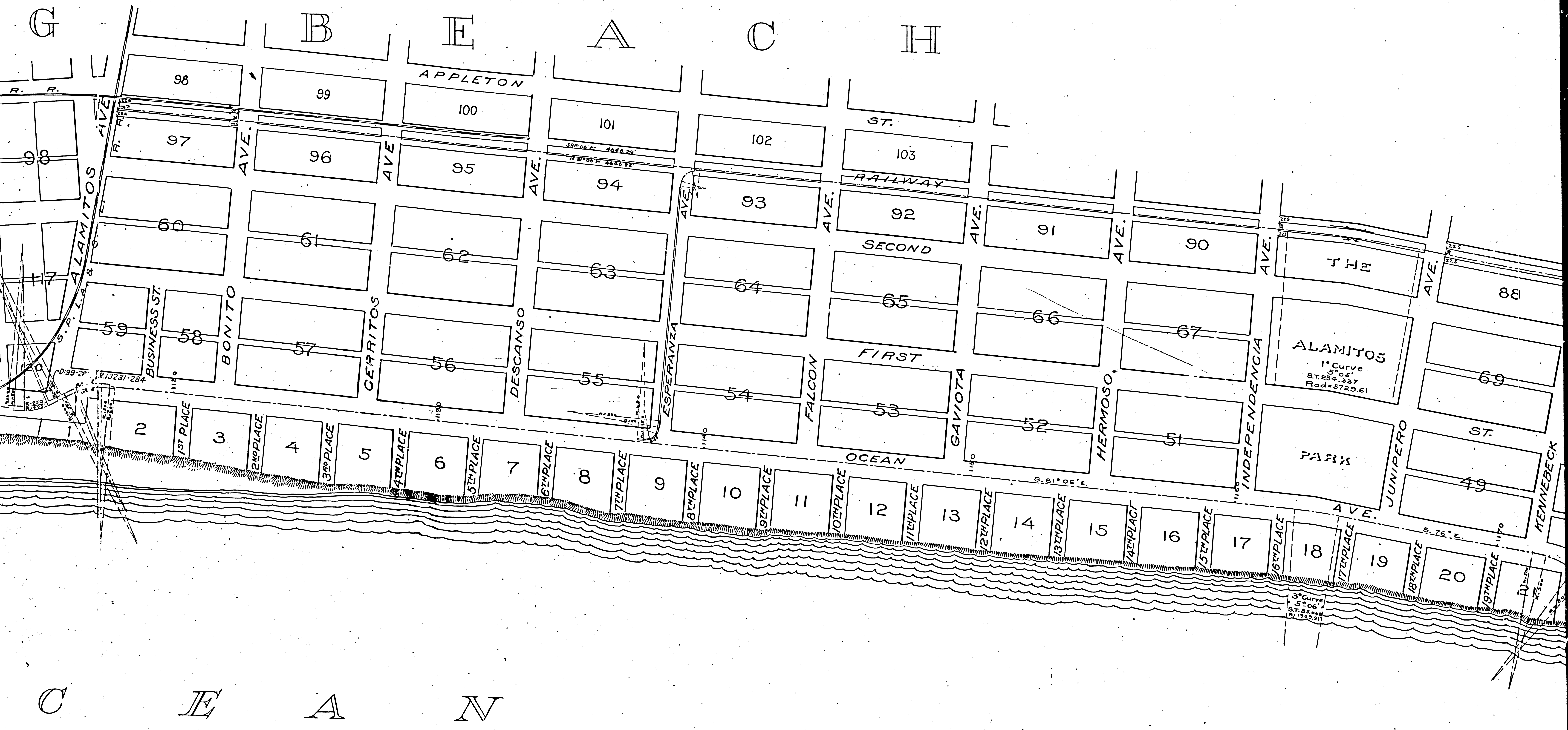
F.M.	1	7	5	2	4
A	1	OF	A	7	



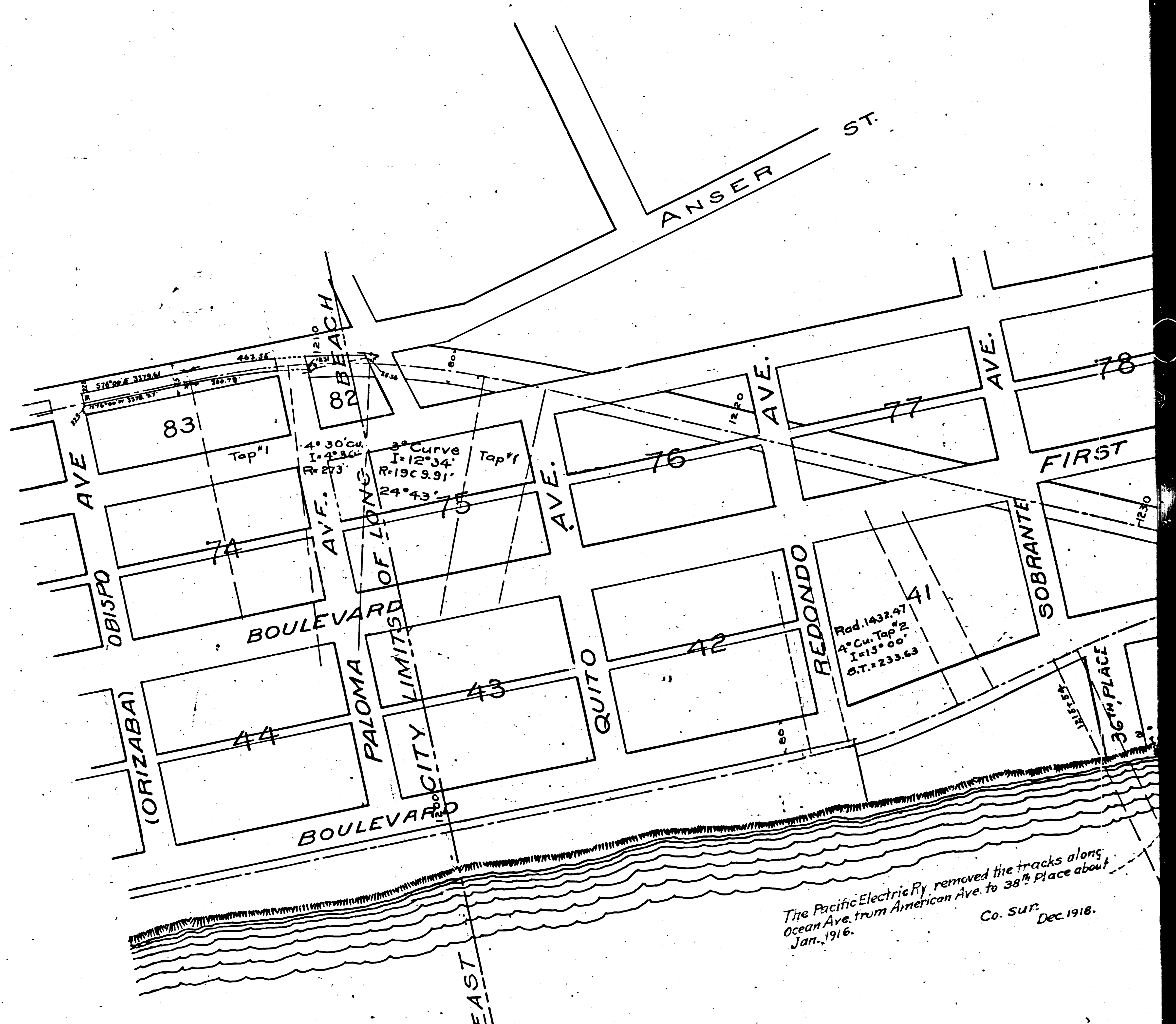
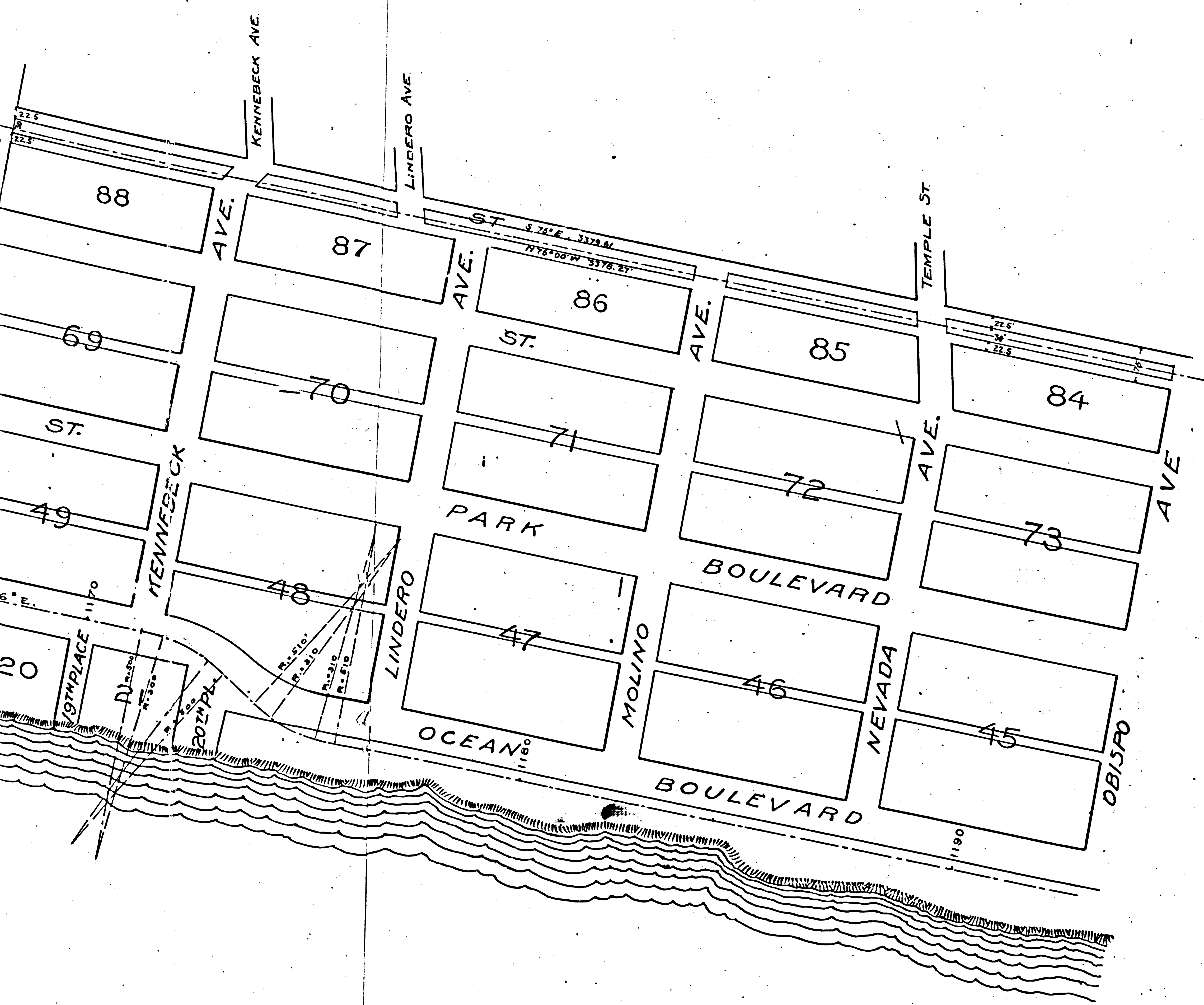
P A C I F I C O C

F.M.	1	7	5	2	4
A	2	OF	A	7	

A-10

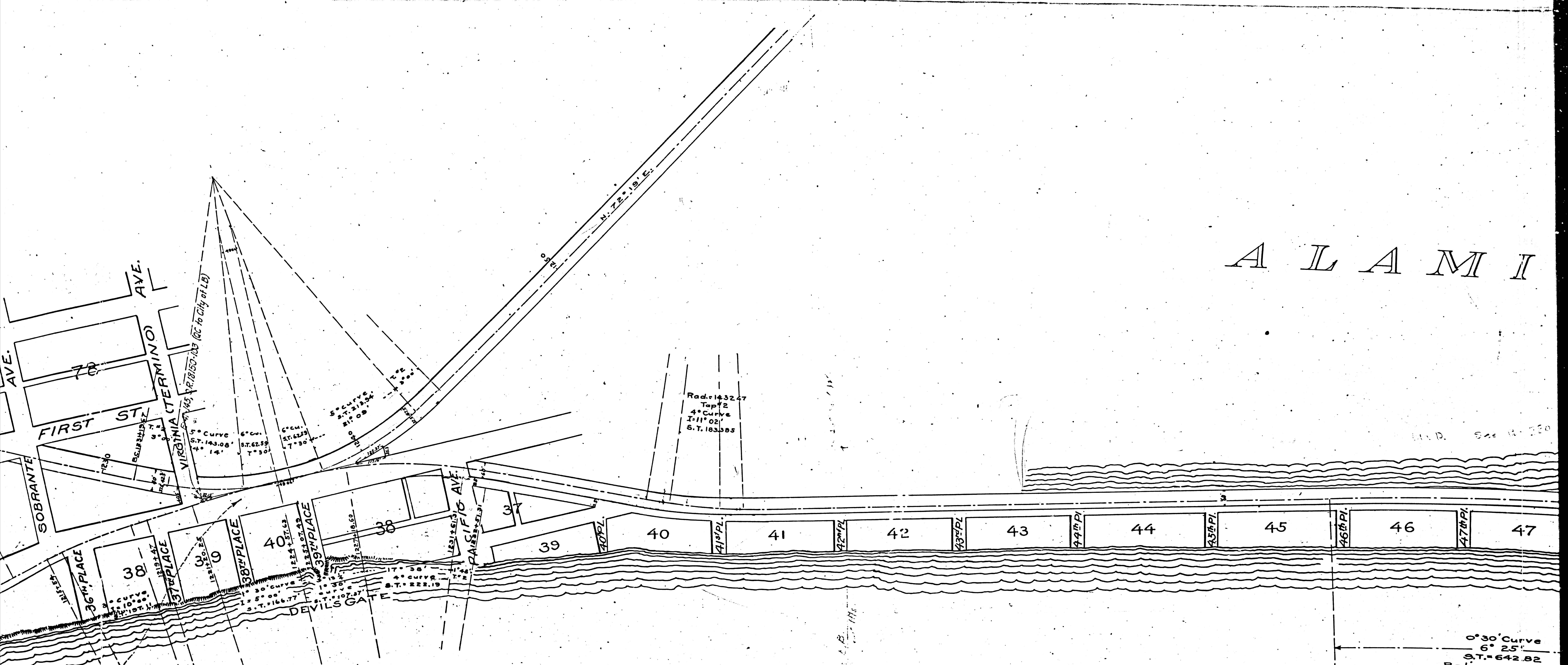


F.M.	1	7	5	2	4
A	3	OF	A	7	



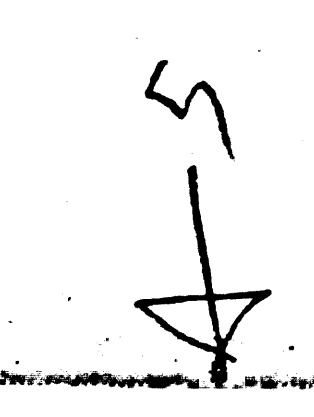
F.M.	1	7	5	2	4
A	4	OF	A	7	

A L A M I



P A C I F I C

F.M.	1	7	5	2	4
A	5	OF	A	7	



moved the tracks along
 ... to 38th Place about
 Co. Sur.
 Dec. 1918.

0°30' Curve
 6°25'
 S.T. = 642.82
 Radius = 11459.17

Rad. = 1432.47
 Top = 2
 4° Curve
 I = 11° 02'
 S.T. = 183385

5° Curve
 S.T. = 143.08
 4°
 7°30'

30° Curve
 S.T. = 112.24
 11°24' S.T. = 53.53
 33° S.T. = 51.43
 5° Curve
 S.T. = 166.77
 5° S.T. = 107.27
 S.T. = 222.19

VIRGINIA (TERMINO) AVE
 18150-183 (Cc. to City of L.B.)

SOBRANTE AVE
 FIRST ST
 78

PACIFIC AVE

DEVILS GATE

36th PLACE

37th PLACE

38th PLACE

39th PLACE

39

40

41

42

43

44

45

46

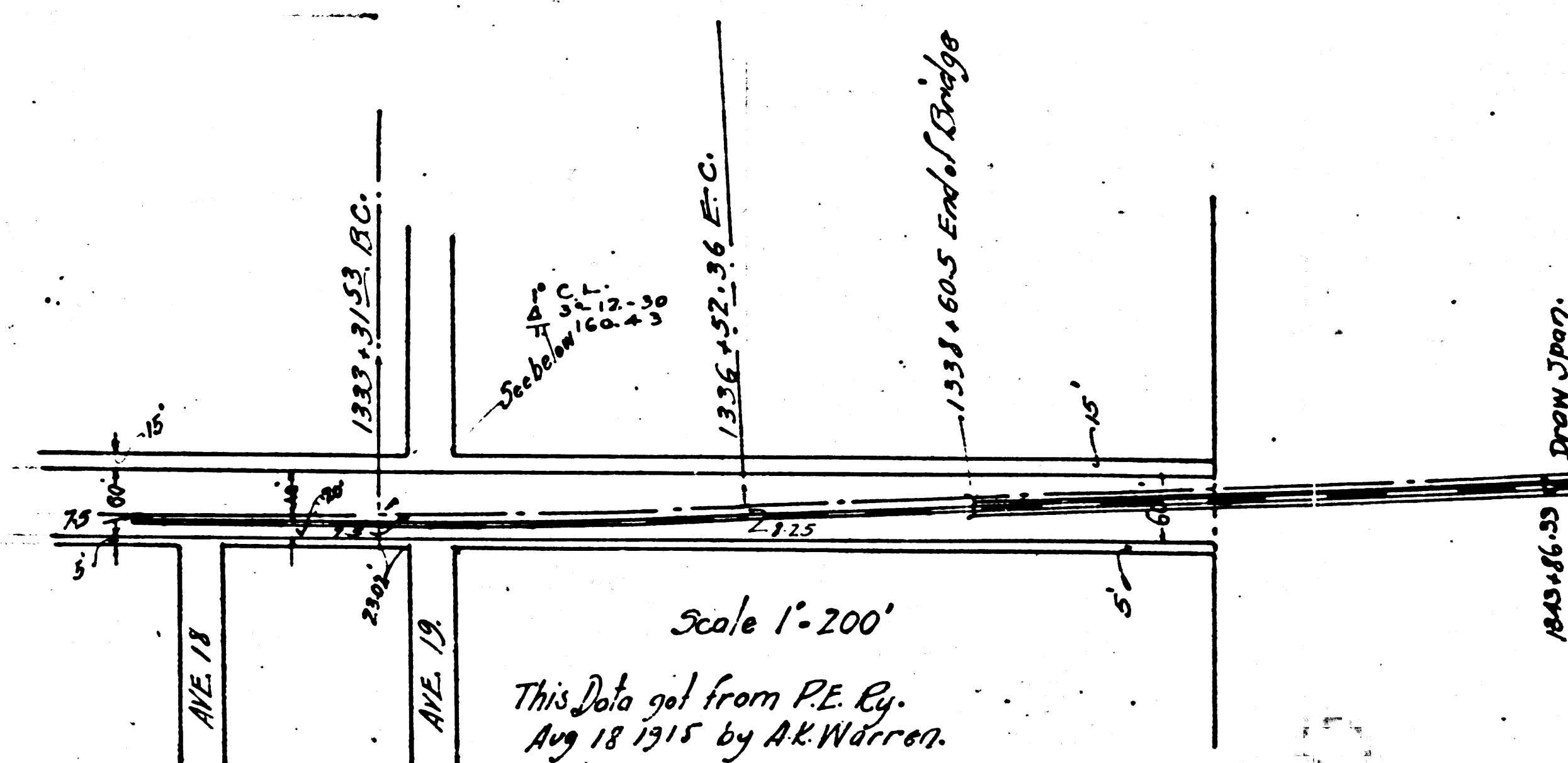
47

4

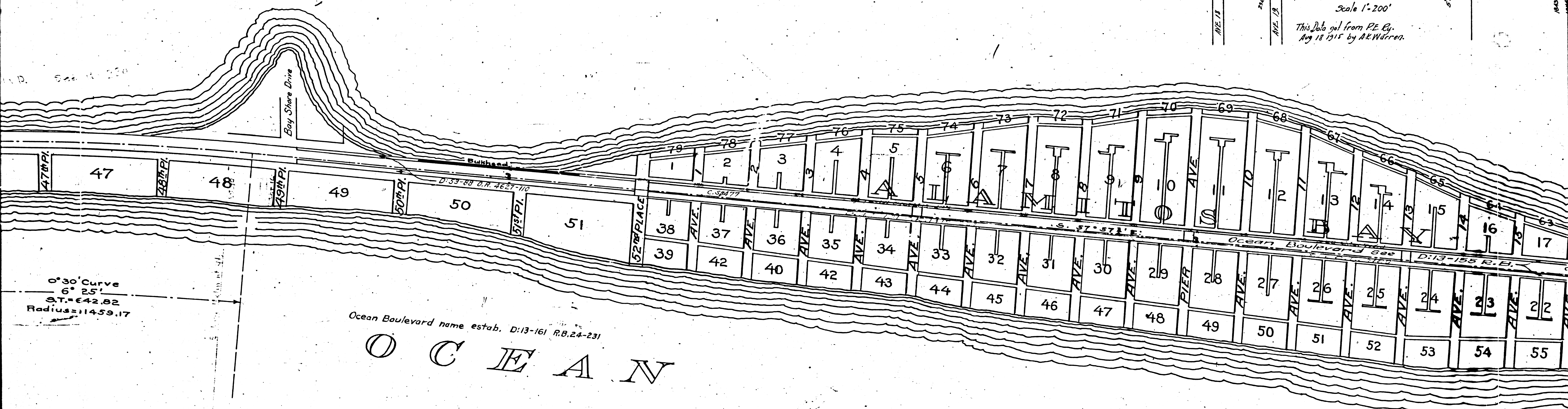
5

M I T O S

B A Y



Scale 1"=200'
 This Data got from P.E. Ry.
 Aug 18 1915 by A.R. Warren.



0°30' Curve
 6° 25'
 S.T.=642.82
 Radius=11459.17

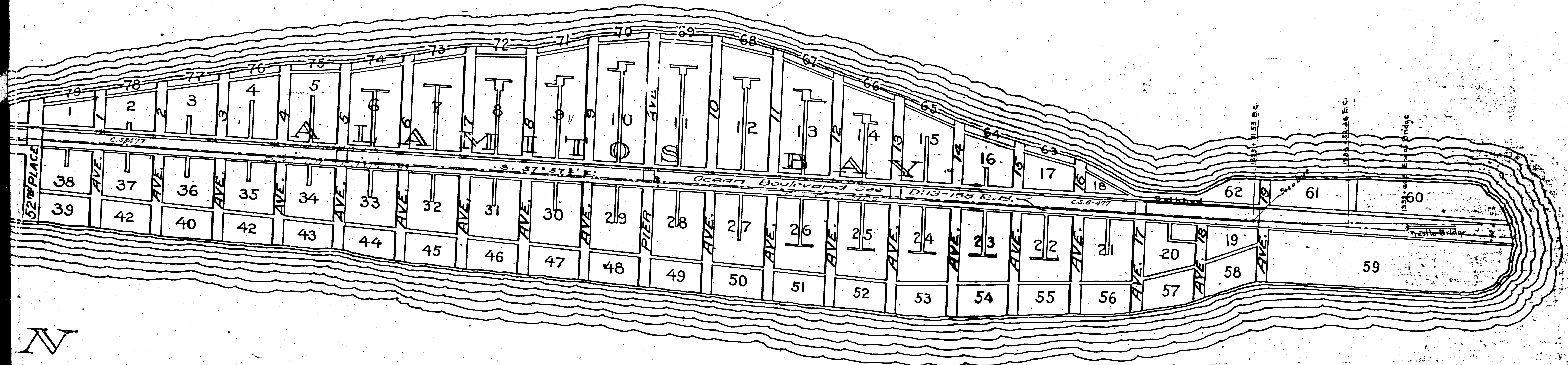
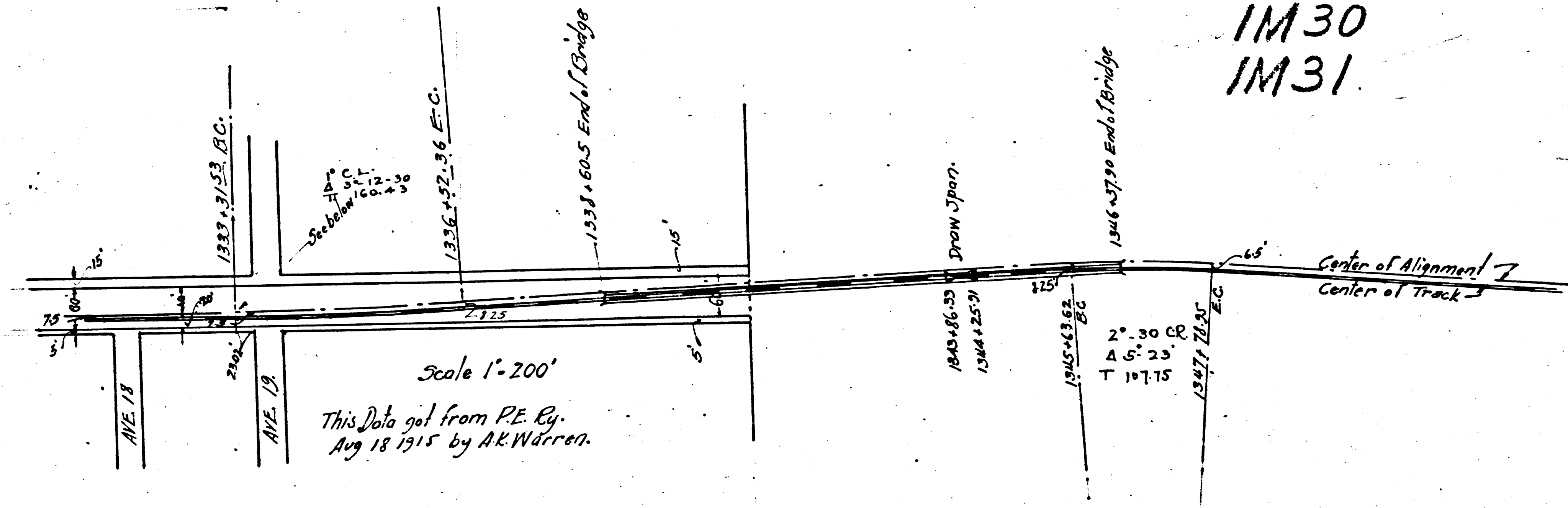
Ocean Boulevard name estab. D:13-161 R.B.24-231

O C E A N

F.M.	1	7	5	2	4
A	6	OF	A	7	

PACIFIC ELECTRIC RAILWAY
 LINE ALONG OCEAN AVE.
LONG BEACH
 SCALE 1" = 200'
 IM 30
 IM 31

B A Y



F.M. 17524
 A 7 OF A 7