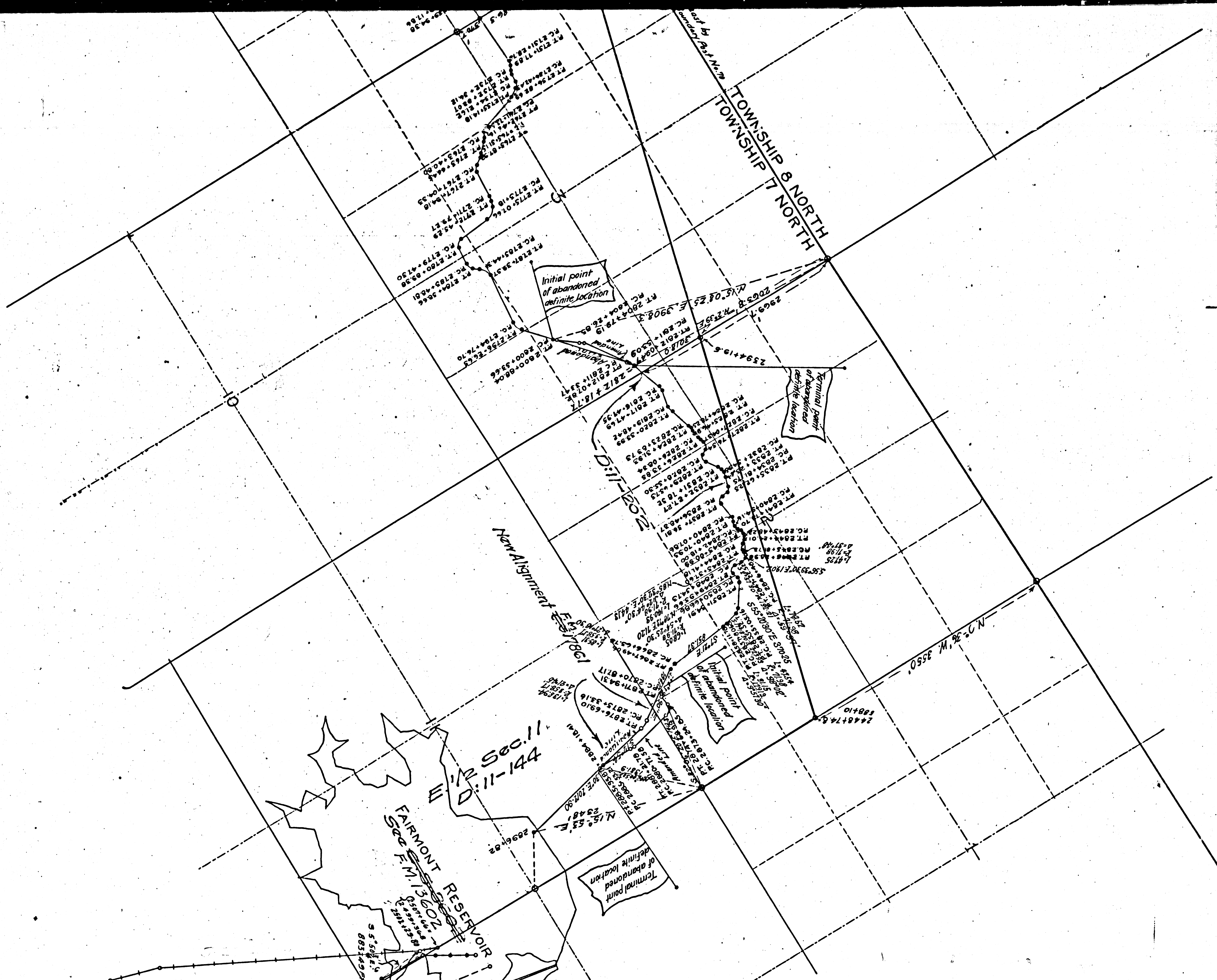


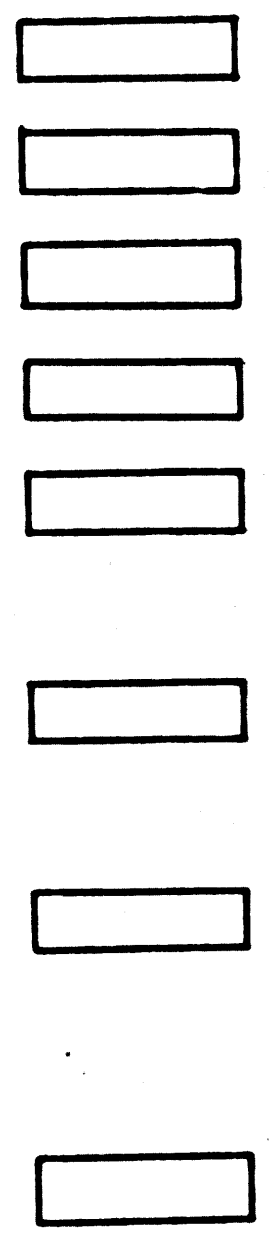
F.M.	1	7	5	5	2
A	2	OF	A	8	





**LEGEND**

- Patented Unsold
- Unsurveyed Primary Unsold
- Unpatented Unselected Primary Unsold
- Unpatented Selected Primary Unsold
- Unpatented Unselected Indemnity Unsold
- Patented Unsold, Main Branch and A. & P. Indemnity - Branch Indemnity Patent - Branch Line Indemnity Patent subject to cancellation in pending suit \*1196
- Patented Contracted (Under defaulted contract 4540)
- Unpatented Unselected Indemnity Unsold - Main Branch and A. & P. Indemnity and P. E. Co. would have right of selection as Main Line Indemnity - though no right of selection now during pendency of Private Entry.
- Lands wanted for Permanent Rights of Way
- Lands wanted on Five (5) Year Lease



F.M. 17552  
 A 3 OF A 8

# MAP

Showing Certain Amendments of the Definite Location of that Portion of the **PART**  
**LOS ANGELES AQUEDUCT**

Lying within the Los Angeles, California, Land District, extending from T. 12 N., R. 12 W., S. B. M., to T. 7 N., R. 15 W., S. B. M.; and the Definite Location of a Certain

## TELEPHONE LINE BEING A PORTION OF THE SYSTEM OF THE LOS ANGELES AQUEDUCT

As Established by the Amended Definite Location thereof, Lying within the Los Angeles, California, Land District. Filed by the City of Los Angeles, California, under the Provisions of the Act of Congress approved June 30, 1906, granting rights of way to said City.

SCALE: 1 INCH--1000 FEET.

Aqueduct right of way to have uniform width of 250 feet throughout entire length.  
 Telephone right of way to have uniform width of 100 feet throughout entire length.

I.M. 72  
 I.M. 73

STATE OF CALIFORNIA,  
 COUNTY OF LOS ANGELES, ss.

WILLIAM MULHOLLAND, being duly sworn, says he is the Chief Engineer of the Bureau of the Los Angeles Aqueduct, in the Department of Public Works of the City of Los Angeles; that the survey of said amendments of said City's main conduit, and the survey of a portion of said City's telephone lines, in the Los Angeles, California, Land District, described as follows:

FIRST: An amendment of said main conduit commencing at a point in the amended definite location thereof (the map of which portion of said amended definite location was approved by the Secretary of the Interior on August 15th, 1908), in the N. W. ¼ of Sec. 21, T. 8 N., R. 16 W., S. B. M., which is marked Station 2269+81.22, from whence bears N. 50° 12' 37" W., distant 1337.4 ft., the N. W. corner of said Sec. 21, T. 8 N., R. 16 W., S. B. M., and running thence from said initial point along the courses marked "Amended Line" on this map, which map consists of four parts, marked respectively, Part Nine, Part Ten, Part Eleven and Part Eleven-A and southwesterly of the previous amended location of said main conduit, a distance of 3069.73 feet to Station 2300+50.95, which is also Station 2300+64.21 of the previous amended location of said main conduit, the same being a point in the N. E. ¼ of said Sec. 21, T. 8 N., R. 16 W., S. B. M., from whence bears N. 36° 07' 25" E., distant 3244.5 feet, the N. E. corner of said Sec. 21, T. 8 N., R. 16 W., S. B. M.;

SECOND: An amendment of said main conduit commencing at a point in the amended definite location thereof (the map of which portion of said amended definite location was approved by the Secretary of the Interior on August 15th, 1908), in the N. E. ¼ of Sec. 4, T. 7 N., R. 15 W., S. B. M., which is marked Station 2716+93.44, from whence bears N. 73° 52' E., distant 1603.3 feet, the N. E. corner of said Sec. 4, T. 7 N., R. 15 W., S. B. M.; and running thence from said initial point along the courses marked "Amended Line" on this map, and northeasterly of the previous amended location of said main conduit, a distance of 575.98 feet to Station 2722+69.42, which is also Station 2721+70.65 of the previous amended location of said main conduit, the same being a point in the N. E. ¼ of said Sec. 4, T. 7 N., R. 15 W., S. B. M., from whence bears N. 58° 31' 40" E., distant 1592.8 feet, the N. E. corner of said Sec. 4, T. 7 N., R. 15 W., S. B. M.;

THIRD: An amendment of said main conduit commencing at a point in the amended definite location thereof (the map of which portion of said amended definite location was approved by the Secretary of the Interior on August 15th, 1908), in the S. E. ¼ of Sec. 3, T. 7 N., R. 15 W., S. B. M., which is marked Station 2800+53.66, from whence bears N. 15° 08' 25" E., distant 3008.3 feet, the N. E. corner of said Sec. 3, T. 7 N., R. 15 W., S. B. M., and running thence from said initial point along the courses marked "Amended Line" on this map, and northwesterly of the previous amended location of said main conduit, a distance of 1155.81 feet to Station 2812+09.47, which is also Station 2812+18.77, of the previous amended location of said main conduit, the same being a point in the S. E. ¼ of said Sec. 3, T. 7 N., R. 15 W., S. B. M.; from whence bears N. 2° 39' E., distant 3018.0 feet the N. E. corner of said Sec. 3, T. 7 N., R. 15 W., S. B. M.;

FOURTH: An amendment of said main conduit commencing at a point in the amended definite location thereof (the map of which portion of said amended definite location was approved by the Secretary of the Interior on August 15th, 1908), in the S. E. ¼ of Sec. 2, T. 7 N., R. 15 W., S. B. M., which is marked Station 2870+87.17, from whence bears S. 82° 06' 20" E., distant 1414.8 feet, the S. E. corner of said Sec. 2, T. 7 N., R. 15 W., S. B. M., and running thence from said initial point along the courses marked "Amended Line" on this map, and easterly of the previous amended location of said main conduit, a distance of 1508.70 feet to Station 2885+95.87, which is also Station 2284+18.41 of the previous amended location of said main conduit, the same being a point in the N. E. ¼ of Sec. 11, T. 7 N., R. 15 W., S. B. M., from whence bears N. 42° 00' 50" E., distant 1381.9 feet the N. E. corner of said Sec. 11, T. 7 N., R. 15 W., S. B. M.;

Said amended portions being a total length of conduit of 1.2 miles.  
 FIFTH: A telephone line beginning at a point on the N. line of Sec. 32, T. 12 N., R. 12 W., S. B. M., which is marked Station 0+00, from whence bears W. distant 5345 feet the S. W. corner of Sec. 35, T. 32 S., R. 35 E., M. D. M.; and running thence from said point of beginning along the courses shown on this map, which map consists of four parts marked respectively, Part Nine, Part Ten, Part Eleven and Part Eleven-A a distance of 251,059.7 feet to Station 2502+29.80, the same being a point in the S. E. ¼ of Sec. 11, T. 7 N., R. 15 W., S. B. M.; from whence bears S. 5° 50' 43" E., distant 883.49 feet the S. E. corner of said Sec. 11, T. 7 N., R. 15 W., S. B. M.;



Main Line Indemnity - though no right of selection now during pendency of Private Entry.  
Lands wanted for Permanent Rights of Way  
Lands wanted on Five(5) Year Lease

# MAP

Showing Certain Amendments of the Definite Location of that Portion of the  
**LOS ANGELES AQUEDUCT**

**PART**

Lying within the Los Angeles, California, Land District, extending from T. 12 N., R. 12 W., S. B. M., to T. 7 N., R. 15 W., S. B. M.; and the Definite Location of a Certain  
**TELEPHONE LINE**

BEING A PORTION OF THE SYSTEM OF THE

## LOS ANGELES AQUEDUCT

As Established by the Amended Definite Location thereof, Lying within the Los Angeles, California, Land District. Filed by the City of Los Angeles, California, under the Provisions of the Act of Congress approved June 30, 1906, granting rights of way to said City.

SCALE: 1 INCH--1000 FEET.

Aqueduct right of way to have uniform width of 250 feet throughout entire length.  
Telephone right of way to have uniform width of 100 feet throughout entire length.

1M.72

1M.73

STATE OF CALIFORNIA,  
COUNTY OF LOS ANGELES, } 888.

WILLIAM MULHOLLAND, being duly sworn, says he is the Chief Engineer of the Bureau of the Los Angeles Aqueduct, in the Department of Public Works of the City of Los Angeles; that the survey of said amendments of said City's main conduit, and the survey of a portion of said City's telephone lines, in the Los Angeles, California, Land District, described as follows:

**FIRST:** An amendment of said main conduit commencing at a point in the amended definite location thereof (the map of which portion of said amended definite location was approved by the Secretary of the Interior on August 15th, 1908), in the N. W. 1/4 of Sec. 21, T. 8 N., R. 16 W., S. B. M., which is marked Station 2269+81.22, from whence bears N. 59° 12' 37" W., distant 1337.4 ft., the N. W. corner of said Sec. 21, T. 8 N., R. 16 W., S. B. M., and running thence from said initial point along the courses marked "Amended Line" on this map, which map consists of four parts, marked respectively, Part Nine, Part Ten, Part Eleven and Part Eleven-A and southwesterly of the previous amended location of said main conduit, a distance of 3069.73 feet to Station 2300+50.95, which is also Station 2300+64.21 of the previous amended location of said main conduit, the same being a point in the N. E. 1/4 of said Sec. 21, T. 8 N., R. 16 W., S. B. M., from whence bears N. 36° 07' 25" E., distant 3244.5 feet, the N. E. corner of said Sec. 21, T. 8 N., R. 16 W., S. B. M.;

**SECOND:** An amendment of said main conduit commencing at a point in the amended definite location thereof (the map of which portion of said amended definite location was approved by the Secretary of the Interior on August 15th, 1908), in the N. E. 1/4 of Sec. 4, T. 7 N., R. 15 W., S. B. M., which is marked Station 2716+93.44, from whence bears N. 73° 06' 20" E., distant 1603.3 feet, the N. E. corner of said Sec. 4, T. 7 N., R. 15 W., S. B. M.; and running thence from said initial point along the courses marked "Amended Line" on this map, and northeasterly of the previous amended location of said main conduit a distance of 575.98 feet to Station 2722+69.42, which is also Station 2721+70.65 of the previous amended location of said main conduit, the same being a point in the N. E. 1/4 of said Sec. 4, T. 7 N., R. 15 W., S. B. M., from whence bears N. 58° 31' 40" E., distant 1592.8 feet, the N. E. corner of said Sec. 4, T. 7 N., R. 15 W., S. B. M.;

**THIRD:** An amendment of said main conduit commencing at a point in the amended definite location thereof (the map of which portion of said amended definite location was approved by the Secretary of the Interior on August 15th, 1908), in the S. E. 1/4 of Sec. 3, T. 7 N., R. 15 W., S. B. M., which is marked Station 270+53.66, from whence bears N. 15° 08' 25" E., distant 3908.3 feet, the N. E. corner of said Sec. 3, T. 7 N., R. 15 W., S. B. M., and running thence from said initial point along the courses marked "Amended Line" on this map, and northwesterly of the previous amended location of said main conduit, a distance of 1155.81 feet to Station 2812+09.47 which is also Station 2812+18.77, of the previous amended location of said main conduit, the same being a point in the S. E. 1/4 of said Sec. 3, T. 7 N., R. 15 W., S. B. M.; from whence bears N. 2° 39' E., distant 3018.0 feet the N. E. corner of said Sec. 3, T. 7 N., R. 15 W., S. B. M.;

**FOURTH:** An amendment of said main conduit commencing at a point in the amended definite location thereof (the map of which portion of said amended definite location was approved by the Secretary of the Interior on August 15th, 1908), in the S. E. 1/4 of Sec. 2, T. 7 N., R. 15 W., S. B. M., which is marked Station 2870+87.17, from whence bears S. 82° 06' 20" E., distant 1413.8 feet, the S. E. corner of said Sec. 2, T. 7 N., R. 15 W., S. B. M., and running thence from said initial point along the courses marked "Amended Line" on this map, and easterly of the previous amended location of said main conduit, a distance of 1508.70 feet to Station 2885+95.87, which is also Station 2284+18.41 of the previous amended location of said main conduit, the same being a point in the N. E. 1/4 of Sec. 11, T. 7 N., R. 15 W., S. B. M., from whence bears N. 42° 00' 50" E., distant 1381.9 feet the N. E. corner of said Sec. 11, T. 7 N., R. 15 W., S. B. M.;

Said amended portions being a total length of conduit of 1.2 miles.

**FIFTH:** A telephone line beginning at a point on the N. line of Sec. 32, T. 12 N., R. 12 W., S. B. M., which is marked Station 0+00, from whence bears W. distant 5345 feet the S. W. corner of Sec. 35, T. 32 S., R. 35 E., M. D. M.; and running thence from said point of beginning along the courses shown on this map, which map consists of four parts marked respectively, Part Nine, Part Ten, Part Eleven and Part Eleven-A a distance of 251,059.7 feet to Station 2502+29.80, the same being a point in the S. E. 1/4 of Sec. 11, T. 7 N., R. 15 W., S. B. M.; from whence bears S. 5° 50' 45" E., distant 883.49 feet the S. E. corner of said Sec. 11, T. 7 N., R. 15 W., S. B. M.;

**SIXTH:** A telephone line beginning at a point in Sec. 12, T. 9 N., R. 15 W., S. B. M., which is marked Station 0+00, and which is also Station 1206+28 of the survey of the telephone line described in the preceding paragraph; from whence bears N. 27° 50' 20" E., distant 10357.4 feet, the N. E. corner of Sec. 1, T. 9 N., R. 15 W., S. B. M.; and running thence from said point of beginning along the course shown on this map a distance of 58,810 feet to Station 588+10, which is also Station 2448+74.8 of the survey of the telephone line described in the preceding paragraph, the same being a point on the W. line of Sec. 1, T. 7 N., R. 15 W., S. B. M.; from whence bears N. 00° 36' 10" W., distant 3500 feet the N. W. corner of said Sec. 1, T. 7 N., R. 15 W., S. B. M.;

Being a total length of telephone line of 58.71 miles;

was made under his direction as Chief Engineer of said Bureau, and under the authority of the said City of Los Angeles, commenced on the 14th day of April, 1908, and ending on the 16th day of October, 1908; and that the survey of the said amendments of said main conduit accurately represents a proper grade line for the flow of water; and that the survey of said amendments of said main conduit, and of said telephone line is accurately represented upon this map, and by the accompanying field notes; and that no lake or lake bed, stream or stream bed is used for the said amendments of said main conduit, except as shown on this map.

Subscribed and sworn to before me this ..... day of January, 1909.

Chief Engineer of the Bureau of the Los Angeles Aqueduct  
in the Department of Public Works of the City of Los Angeles.

Notary Public in and for the County of Los Angeles, State of California

We, the undersigned, A. C. HARPER, H. J. LELANDE, A. A. HUBBARD and HORACE B. FERRIS, do hereby certify that we are, respectively, the Mayor, the City Clerk, the President of the Board of Public Works and the Secretary of the Board of Public Works of the City of Los Angeles; that William Mulholland, who subscribed the accompanying affidavit, is the Chief Engineer of the Bureau of the Los Angeles Aqueduct, in the Department of Public Works of the said City of Los Angeles; that the survey of the said amendments of said main conduit and of said telephone line in the Los Angeles, California, Land District, as accurately represented on this map, and by the accompanying field notes, was made under the authority of the said City of Los Angeles; that the said City is duly authorized by its Charter to construct the said main conduit and telephone line upon the location shown upon this map; that the said amendments of said main conduit and telephone line, as represented on this map, and by said field notes, were adopted by the said City by resolution of its Board of Public Works on the ..... day of January, 1909, and by resolution of its Council on the ..... day of January, 1909, as the definite location of the said amendments of said main conduit and telephone line, described as follows:

**FIRST:** An amendment of said main conduit commencing at a point in the amended definite location thereof (the map of which portion of said amended definite location was approved by the Secretary of the Interior on August 15th, 1908), in the N. W. 1/4 of Sec. 21, T. 8 N., R. 16 W., S. B. M., which is marked Station 2269+81.22, from whence bears N. 59° 12' 37" W., distant 1337.4 ft., the N. W. corner of said Sec. 21, T. 8 N., R. 16 W., S. B. M., and running thence from said initial point along the courses marked "Amended Line" on this map, which map consists of four parts, marked respectively, Part Nine, Part Ten, Part Eleven and Part Eleven-A and southwesterly of the previous amended location of said main conduit, a distance of 3069.73 feet to Station 2300+50.95, which is also Station 2300+64.21 of the previous amended location of said main conduit, the same being a point in the N. E. 1/4 of said Sec. 21, T. 8 N., R. 16 W., S. B. M., from whence bears N. 36° 07' 25" E., distant 3244.5 feet, the N. E. corner of said Sec. 21, T. 8 N., R. 16 W., S. B. M.;

**SECOND:** An amendment of said main conduit commencing at a point in the amended definite location thereof (the map of which portion of said amended definite location was approved by the Secretary of the Interior on August 15th, 1908), in the N. E. 1/4 of Sec. 4, T. 7 N., R. 15 W., S. B. M., which is marked Station 2716+93.44, from whence bears N. 73° 06' 20" E., distant 1603.3 feet, the N. E. corner of said Sec. 4, T. 7 N., R. 15 W., S. B. M.; and running thence from said initial point along the courses marked "Amended Line" on this map, and northeasterly of the previous amended location of said main conduit a distance of 575.98 feet to Station 2722+69.42, which is also Station 2721+70.65 of the previous amended location of said main conduit, the same being a point in the N. E. 1/4 of said Sec. 4, T. 7 N., R. 15 W., S. B. M., from whence bears N. 58° 31' 40" E., distant 1592.8 feet, the N. E. corner of said Sec. 4, T. 7 N., R. 15 W., S. B. M.;

**THIRD:** An amendment of said main conduit commencing at a point in the amended definite location thereof (the map of which portion of said amended definite location was approved by the Secretary of the Interior on August 15th, 1908), in the S. E. 1/4 of Sec. 3, T. 7 N., R. 15 W., S. B. M., which is marked Station 2800+53.66, from whence bears N. 15° 08' 25" E., distant 3908.3 feet, the N. E. corner of said Sec. 3, T. 7 N., R. 15 W., S. B. M., and running thence from said initial point along the courses marked "Amended Line" on this map, and northwesterly of the previous amended location of said main conduit, a distance of 1155.81 feet to Station 2812+09.47 which is also Station 2812+18.77, of the previous amended location of said main conduit, the same being a point in the S. E. 1/4 of said Sec. 3, T. 7 N., R. 15 W., S. B. M.; from whence bears N. 2° 39' E., distant 3018.0 feet the N. E. corner of said Sec. 3, T. 7 N., R. 15 W., S. B. M.;

**FOURTH:** An amendment of said main conduit commencing at a point in the amended definite location thereof (the map of which portion of said amended definite location was approved by the Secretary of the Interior on August 15th, 1908), in the S. E. 1/4 of Sec. 2, T. 7 N., R. 15 W., S. B. M., which is marked Station 2870+87.17, from whence bears S. 82° 06' 20" E., distant 1413.8 feet, the S. E. corner of said Sec. 2, T. 7 N., R. 15 W., S. B. M., and running thence from said initial point along the courses marked "Amended Line" on this map, and easterly of the previous amended location of said main conduit, a distance of 1508.70 feet to Station 2885+95.87, which is also Station 2284+18.41 of the previous amended location of said main conduit, the same being a point in the N. E. 1/4 of Sec. 11, T. 7 N., R. 15 W., S. B. M.; from whence bears N. 42° 00' 50" E., distant 1381.9 feet the N. E. corner of said Sec. 11, T. 7 N., R. 15 W., S. B. M.;

Said amended portions being a total length of conduit of 1.2 miles.

**FIFTH:** A telephone line beginning at a point on the N. line of Sec. 32, T. 12 N., R. 12 W., S. B. M., which is marked Station 0+00, from whence bears W. distant 5345 feet the S. W. corner of Sec. 35, T. 32 S., R. 35 E., M. D. M.; and running thence from said point of beginning along the courses shown on this map, which map consists of four parts marked respectively, Part Nine, Part Ten, Part Eleven and Part Eleven-A a distance of 251,059.7 feet to Station 2502+29.80, the same being a point in the S. E. 1/4 of Sec. 11, T. 7 N., R. 15 W., S. B. M.; from whence bears S. 5° 50' 45" E., distant 883.49 feet the S. E. corner of said Sec. 11, T. 7 N., R. 15 W., S. B. M.;

**SIXTH:** A telephone line beginning at a point in Sec. 12, T. 9 N., R. 15 W., S. B. M., which is marked Station 0+00, and which is also Station 1206+28 of the survey of the telephone line described in the preceding paragraph; from whence bears N. 27° 50' 20" E., distant 10357.4 feet, the N. E. corner of Sec. 1, T. 9 N., R. 15 W., S. B. M.; and running thence from said point of beginning along the course shown on this map a distance of 58,810 feet to Station 588+10, which is also Station 2448+74.8 of the survey of the telephone line described in the preceding paragraph, the same being a point on the W. line of Sec. 1, T. 7 N., R. 15 W., S. B. M.; from whence bears N. 00° 36' 10" W., distant 3500 feet the N. W. corner of said Sec. 1, T. 7 N., R. 15 W., S. B. M.;

Being a total length of telephone line of 58.71 miles;

and that no lake or lake bed, stream or stream bed, is used for the said amendments of said main conduit, except as shown on this map; and that this map has been prepared to be filed for the approval of the Secretary of the Interior in order that the said City of Los Angeles may obtain the benefits of the Act of Congress, approved June 30, 1906, entitled: "An Act authorizing and directing the Secretary of the Interior to sell to the city of Los Angeles, California, certain public lands in California; and granting rights in, over, and through the Sierra Forest Reserve, the Santa Barbara Forest Reserve, and the San Gabriel Timber Land Reserve, California, to the city of Los Angeles, California."

And we further certify, that the right of way herein described is desired for the purpose of constructing, operating and maintaining canals, ditches, pipes and pipe lines, flumes, tunnels and conduits for conveying water to the city of Los Angeles, and for the purpose of constructing, operating and maintaining power and electric plants, poles and lines, for the generation and distribution of electric energy, and for the purpose of constructing, operating and maintaining telephone lines for use in connection with the construction, operation and maintenance of said water and power works.

Mayor of the City of Los Angeles.

City Clerk of the City of Los Angeles.

President of the Board of Public Works of the City of Los Angeles.

Secretary of the Board of Public Works of the City of Los Angeles.

F.M. 17552  
A 4 OF A 8



# ALIGNMENT LOS ANGELES AQUEDUCT

ROLL WITH F.M. 17552  
~~ROLL WITH C.S. 7552~~

Note: True courses from stellar observations

Sta	Dist	Course	Rad. of Curve	A		Sta	Dist	Course	Rad. of Curve	A
2050+59.33					End of conduit and beginning of ribbed steel siphon 16 ft. diameter.	2335+54.32	89.58		716.23	7°10' E.
	21458.33	S. 1°-10' E.				2345+16.04	961.72	S. 84°-26 1/2' E.		
2265+17.66	207.60		179.19	66°26' L.	End of siphon and beginning of conduit. From Sta. 2260+92.55 Sec. Cor. common to Sec. 16-17-20-21 T. 8 N. R. 16 W. bears west 793.35 ft.	2346+83.54	167.50		358.17	26°48' R.
2267+25.26	266.37	S. 67°-36' E.				2350+05.06	321.52	S. 67°-38 1/2' E.		
2269+91.65	132.50		716.23	10°36' R.		2351+42.56	137.50		179.19	44°00' R.
2271+24.15	1476.28	S. 57°-00' E.				2356+10.82	468.26	S. 13°-38 1/2' E.		
2286+00.43	110.83		358.17	17°44' R.		2357+96.76	185.94		179.19	59°30' E.
2287+11.26	1217.12	S. 39°-16' E.				2363+85.52	588.76	S. 73°-08 1/2' E.		
2299+28.38	135.83		358.17	21°44' E.		2364+90.65	105.13		179.19	33°38 1/2' R.
2300+64.21	714.79	S. 61°-00' E.				2370+84.78	594.13	S. 39°-30' E.		
2307+79.00	68.85		358.17	14°13' R.		2372+39.16	154.39		358.17	24°42' E.
2308+67.85	1200.25	S. 46°-47' E.				2378+82.45	643.29	S. 64°-12' E.		
2320+68.10	95.29		179.19	30°28 1/2' E.		2378+82.45	96.30		179.19	30°49' E.
2321+63.39	1301.35	S. 77°-16 1/2' E.			From Sta. 2324+27.85 Sec. Cor. common to Sec. 15-16-21-22 T. 8 N. R. 16 W. bears north 3943.80 ft.	2379+79.75	151.18	N. 84°-59' E.		
2334+64.74						2381+29.93	85.16		179.19	27°15' R.
						2382+15.09	424.14	S. 67°-46' E.		
						2386+39.23	110.83		358.17	17°44' E.
						2387+50.06	108.85	S. 85°-30' E.		
						2388+58.91	71.20		179.19	22°47' R.
						2389+30.11	343.29	S. 62°-43' E.		
						2392+73.40	161.41		182.56	90°24' E.
						2394+34.81	122.30	N. 26°-53' E.		
						2395+57.11	151.19		102.56	84°40' R.
						2397+08.30				

F.M. 17552  
A 5 OF A 8



Sta.	Dist.	Course	Rad. of Curve	Δ	Sta.	Dist.	Course	Rad. of Curve	Δ	Sta.	Dist.	Course	Rad. of Curve	Δ
2402+33.49	525.19	S. 68°-27'E.			2445+28.34	72.54		71.98	58°02½' R.	2486+31.93	83.60		71.98	66°52½' R.
2403+31.04	97.55		179.19	31°13' R.	2446+98.46	170.12	N. 57°-26'E.			2490+34.54	402.61	S. 60°-17½'E.		
2408+47.40	516.36	S. 37°-14'E.			2447+79.14	80.68		102.56	45°11' R.	2490+84.96	50.42		71.98	40°20½' R.
2410+21.25	173.85		353.17	27°49' R.	2450+45.59	266.45	S. 82°-23'E.			2491+10.02	25.06	N. 79°-22'E.		
2413+96.33	375.08	S. 9°-25'E.			2451+71.54	125.95		102.56	70°32' R.	2491+74.31	64.29		102.56	36°00' R.
2415+89.51	193.18		179.19	61°49' R.	2453+83.26	211.72	N. 26°-05'E.			2492+70.66	96.35	S. 64°-38'E.		
2423+94.29	804.78	S. 71°-14'E.			2454+84.82	101.56		179.19	32°30' R.	2492+99.30	28.64		179.19	9°10' R.
2425+11.67	117.38		102.56	65°44' R.	2456+74.75	189.93	N. 58°-35'E.			2495+26.78	227.48	S. 55°-28'E.		
2426+21.69	110.02	N. 43°-02'E.			2458+33.66	158.91		179.19	50°51' R.	2495+62.20	35.42		358.17	5°39' R.
2427+06.17	84.48		102.56	47°18½' R.	2462+69.28	435.62	S. 70°-34'E.			2502+22.52	660.32	S. 49°-49'E.		
2427+97.90	91.73	S. 89°-39½'E.			2464+02.30	133.02		179.19	42°34' R.	2502+97.78	75.26		358.17	12°01' R.
2429+05.42	107.52		71.98	86°01½' R.	2475+35.40	1133.10	S. 28°-00'E.			2507+57.46	459.68	S. 37°-48'E.		
2430+72.69	167.27	N. 4°-19'E.			2476+35.61	100.21		179.19	32°04' R.	2508+38.45	80.99		358.17	12°57½' R.
2432+34.83	162.14		179.19	51°53' R.	2477+07.79	72.18	S. 60°-04'E.			2509+94.73	158.28	S. 24°-50½'E.		
2434+44.35	209.52	N. 56°-12'E.			2477+94.75	86.96		71.98	69°35' R.	2511+10.96	116.23		102.56	65°06½' R.
2435+23.93	79.58		179.19	25°28' R.	2478+35.65	40.30	N. 50°-21'E.			2512+27.55	116.59	S. 89°-57'E.		
2435+47.23	23.30	N. 81°-40'E.			2478+83.80	48.75		179.19	15°36' R.	2513+47.19	119.64		102.56	66°51' R.
2436+52.33	105.10		179.19	33°38' R.	2479+07.65	23.85	N. 65°-57'E.			2515+74.05	48.21		102.56	27°01½' R.
2438+31.74	179.41	S. 64°-42'E.			2480+33.72	126.07		102.56	70°35½' R.	2516+22.26	29.00	S. 50°-00½'E.		
2439+14.70	82.96		71.98	66°22' R.	2482+48.68	214.96	S. 43°-27½'E.			2516+51.26	108.65		71.98	86°55½' R.
2439+40.07	25.37	S. 1°-40'W.			2482+82.53	33.85		179.19	10°49½' R.	2517+59.91	54.60	N. 43°-04'E.		
2440+02.74	62.67		71.98	50°08½' R.	2483+31.95	49.42	S. 32°-38'E.			2518+14.51	64.91		71.98	51°54' R.
2441+32.91	130.17	S. 48°-28½'E.			2483+82.90	50.95		102.56	28°32' R.	2518+79.42	395.00	S. 85°-02'E.		
2442+20.71	87.80		102.56	49°10' R.	2484+55.80	72.90	S. 4°-06'E.			2522+74.42	62.11		102.56	34°47' R.
2443+21.92	101.21	S. 0°-41½'W.			2484+89.13	33.33		179.19	10°41' R.	2523+56.53	55.12	N. 60°-11'E.		
2444+10.94	89.02		71.98	71°13' R.	2485+48.33	59.20	S. 6°-35'W.			2523+91.65	80.00		102.56	44°49' R.
2444+55.80	44.86	S. 70°-31½'E.								2524+71.65				

From Sta. 2455+71.87 Granite Rock  
 witnessed on Mt. by Stone marked  
 d.c. Gov. common to Sec. 23-24-25-26, T. 8 N.,  
 R. 16 W. bears north 1720.61 ft.

F.M. 17552  
 A 6 OF A 8



Station	Dist.	Course	Rad. of Curve	Δ
2524+71.65	115.17	S. 75°-00' E.		
2525+86.84	108.11		102.56	60°32' R.
2526+94.95	109.95	S. 14°-27 1/2' E.		
2528+04.90	145.76		102.56	81°37 1/2' E.
2529+50.66	96.62	N. 83°-55' E.		
2530+47.20	61.51		179.19	19°41' R.
2531+01.79	279.96	S. 76°-24' E.		
2533+51.75	93.41		179.19	29°53 1/2' E.
2534+82.16	560.65	N. 73°-42 1/2' E.		
2540+42.81	84.32		179.19	26°59' R.
2541+27.10	372.87	S. 79°-18 1/2' E.		
2545+00.00	74.69		358.17	11°57' R.
2545+74.69	252.85	S. 67°-21 1/2' E.		
2548+27.55	165.52		358.17	26°29' R.
2549+93.07	409.78	S. 40°-52 1/2' E.		
2554+02.85	263.07		179.19	14°11' E.
2556+65.92	1347.46	N. 54°-56 1/2' E.		
2570+33.38	79.38		716.23	6°21' R.
2571+12.76	297.64	N. 61°-17 1/2' E.		
2574+10.40	189.95		358.17	30°23 1/2' R.
2576+00.35	1055.82	S. 88°-19' E.		
2586+56.17	152.08		716.23	12°10' R.
2588+01.25	886.95	S. 76°-09' E.		
2596+95.20	115.21		358.17	19°26' R.
2598+10.41	772.54	S. 57°-43' E.		
2605+82.95	80.00		358.17	12°48' R.
2606+82.95				

From Sta. 2528+53.82 Stone witness on west of Stone Monument marking of S. E. Co. Dec. 25, T. 8 N. R. 15 W. bears east 122.63 ft.

From Sta. 2570+34.20 - 4x4 Redwood Post marking Sec. Co. Common to Sec. 29-30-31-32, T. 8 N. R. 15 W. bears east 179.10 ft.

From Sta. 2588+75.20 - 4x4 Redwood Post marking Sec. Co. Common to Sec. 29-30-31-32, T. 8 N. R. 15 W. bears south 138.6 ft.

Sta.	Dist.	Course	Rad. of Curve	Δ
2606+82.95	644.12	S. 44°-65' E.		
2613+07.07	158.75		358.17	25°24' R.
2614+65.82	584.80	S. 19°-31' E.		
2620+50.62	94.17		716.23	7°32' R.
2621+44.79	650.80	S. 11°-59' E.		
2627+95.59	137.92		358.17	22°04' E.
2629+33.51	893.75	S. 34°-03' E.		
2638+27.26	71.25		716.23	5°42' E.
2638+98.51	1121.11	S. 39°-45' E.		
2650+19.62	113.33		716.23	9°04' E.
2651+32.95	886.76	S. 48°-49' E.		
2660+19.71	175.42		358.17	28°04' R.
2661+95.13	1233.17	S. 20°-46' E.		
2674+29.30	240.89		179.19	77°05' E.
2676+69.19	899.15	N. 82°-10' E.		
2685+68.34	44.69		179.19	14°17 1/2' R.
2686+13.03	341.91	S. 83°-32 1/2' E.		
2689+54.94	71.48		179.19	22°53' E.
2690+26.42	1310.49	N. 73°-34 1/2' E.		
2703+36.91	39.46		102.56	22°06 1/2' E.
2703+76.37	392.20	N. 51°-28' E.		
2707+68.67	112.11		179.19	35°52' R.
2708+80.68	87.08	N. 87°-20' E.		
2709+67.76	65.96		179.19	21°06 1/2' R.
2710+33.92	344.82	S. 71°-33 1/2' E.		
2713+78.54	53.18		179.19	17°01' E.
2714+31.72	281.35	S. 88°-34 1/2' E.		
2717+13.07				

From Sta. 2664+23.95 - Stone witness on east of West Line by Post #69 marking S. E. Co. Sec. 32, T. 8 N. R. 15 W. bears east 610.20 ft.

From Sta. 2677+37.10 S. E. Co. Sec. 32, T. 8 N. R. 15 W. bears north 1049.5 ft.

Sta.	Dist.	Course	Rad. of Curve	Δ
2717+13.07	137.56		102.56	77°02' R.
2718+50.63	1028.12	S. 11°-32 1/2' E.		
2728+78.75	117.27		179.19	37°31 1/2' E.
2729+96.02	92.14	S. 49°-04' E.		
2739+17.86	76.52		102.56	42°61' E.
2739+94.30	1134.37	N. 88°-05' E.		
2751+28.75	49.14		102.56	27°31' R.
2751+77.89	78.23	S. 64°-24' E.		
2752+56.12	32.95		102.56	18°27' E.
2752+89.07	132.55	S. 82°-51' E.		
2754+21.62	92.56		102.56	51°50' R.
2755+14.18	128.25	S. 31°-01' E.		
2756+42.43	40.26		179.19	12°53' R.
2756+82.69	490.90	S. 18°-08' E.		
2761+73.59	68.57		102.56	38°24' E.
2762+42.16	98.64	S. 56°-32' E.		
2763+40.80	25.65		179.19	8°12 1/2' R.
2763+66.45	184.70	S. 48°-19 1/2' E.		
2765+51.15	36.77		179.19	11°46' R.
2765+87.92	116.41	S. 36°-33 1/2' E.		
2767+04.33	89.85		102.56	50°19' E.
2767+94.18	385.09	S. 86°-52 1/2' E.		
2771+79.27	66.02		179.19	21°07' R.
2772+45.29	72.71	S. 65°-45 1/2' E.		
2773+18.00	189.66		179.19	60°41' R.
2775+07.66	439.64	S. 5°-04 1/2' E.		
2779+47.30	142.00		102.56	78°34 1/2' E.
2780+89.38				

From Sta. 2743+86.30 Stone marking 1/4 Sec. Co. common to Sec. 3-4, T. 7 N. R. 15 W. bears south 370.7 ft.

F.M. 117552  
A 7 OF A 8



Sta.	Dist.	Course	Rad. of Curve	Δ	Station	Distance	Bearing	Radius of Curve	Direction of Curve	Remarks	Station	Distance	Bearing	Radius of Curve	Direction of Curve	Remarks
2780 + 89.38					2820 + 33.99						2844 + 24.01					
2783 + 48.81	259.43	S. 84° - 39' E.			2823 + 83.73	349.74	N. 78° - 41' E				2844 + 41.18	17.17	S. 17° - 19 1/2' E			
2784 + 58.66	109.85		102.56	61° 31' R.	2824 + 31.98	48.20		102.56	26° 57 1/2' R		2845 + 37.60	96.42		71.98	77° 08' L	
2785 + 44.31	85.65	N. 33° - 50' E.			2824 + 78.25	46.22	S. 79° - 19 1/2' E				2845 + 81.73	44.13	N. 85° - 22 1/2' E			
2787 + 39.57	195.26		179.19	62° 29' R.	2825 + 46.91	68.66		102.56	38° 27' L		2846 + 28.98	47.25		71.98	37° 48' R	
2794 + 76.70	737.13	S. 83° - 41' E.			2826 + 08.34	61.43	N. 62° - 13 1/2' E				2846 + 48.00	19.02	S. 56° - 39 1/2' E			
2796 + 26.65	149.95		179.19	47° 59' L	2826 + 58.85	45.51		102.56	26° 29' R		2847 + 22.52	74.52		71.98	59° 37' R	
2796 + 26.65	1506.82	N. 48° - 20' E.			2827 + 54.87	50.52	N. 87° - 42 1/2' E				2848 + 54.73	132.21	S. 2° - 57 1/2' W			
2811 + 33.47	74.35		179.19	23° 47 1/2' R	2827 + 76.54	72.17		71.98	57° 41 1/2' R		2849 + 95.66	140.93		71.98	112° 44 1/2' L	
2812 + 07.82	449.43	N. 72° - 07 1/2' E.			2828 + 55.30	78.76	S. 34° - 36' E				2850 + 66.86	71.20	N. 70° - 13' E			
2816 + 57.25	90.44		179.19	21° 56 1/2' R	2829 + 65.73	110.43		71.98	88° 22 1/2' L		2851 + 34.91	68.05		71.98	54° 20 1/2' R	
2817 + 47.69	200.73	S. 78° - 56' E.			2831 + 78.52	212.79	N. 57° - 02' E				2855 + 05.16	370.25	S. 55° - 20 1/2' E			
2819 + 44.42	85.57		179.19	27° 23' L	2832 + 27.27	48.75		102.56	27° 17' R		2855 + 52.70	47.54		71.98	58° 02' R	
2820 + 33.99					2832 + 64.95	27.68	N. 84° - 19' E				2857 + 80.63	227.93	S. 17° - 18 1/2' E			
					2833 + 83.44	68.49		179.19	21° 54 1/2' R		2858 + 11.78	31.15		179.19	9° 57 1/2' R	
					2834 + 81.75	158.31	S. 73° - 46 1/2' E				2866 + 63.75	851.97	S. 7° - 21' E			
					2835 + 62.25	80.50		71.98	64° 23 1/2' R		2867 + 49.06	85.31		358.17	27° 18 1/2' L	
					2836 + 48.37	86.12	S. 9° - 23' E				2875 + 33.16	784.10	S. 34° - 39 1/2' E			
					2837 + 56.81	108.44		71.98	86° 45' L		2876 + 64.10	135.94		358.17	21° 45' R	
					2840 + 07.86	251.05	N. 83° - 52' E				2896 + 82.00	2012.90	S. 12° - 54 1/2' E			
					2840 + 70.95	63.09		102.56	35° 20' W							
					2840 + 94.16	23.21	S. 60° - 48' E									
					2841 + 73.70	79.54		71.98	63° 38' L							
					2842 + 18.00	44.20	N. 55° - 34' E									
					2843 + 00.99	82.99		102.56	46° 28 1/2' R							
					2843 + 48.22	47.23	S. 77° - 57 1/2' E									
					2844 + 24.01	75.79		71.98	60° 38' R							

From Sta. 2813 + 65.40, N.W. Co. Sec. 2, T. 7 N. R. 15 W. line north 2969.70 ft.

From Sta. 2896 + 82.00 the Sec. Co. Corner to Sec. 1, T. 7 N. R. 15 W. bears N. 5° 53' E. 2386 ft. At Sta. 2896 + 82 the conduit crosses into Fairmont Township.

F.M. 17552  
A 8 OF A 8