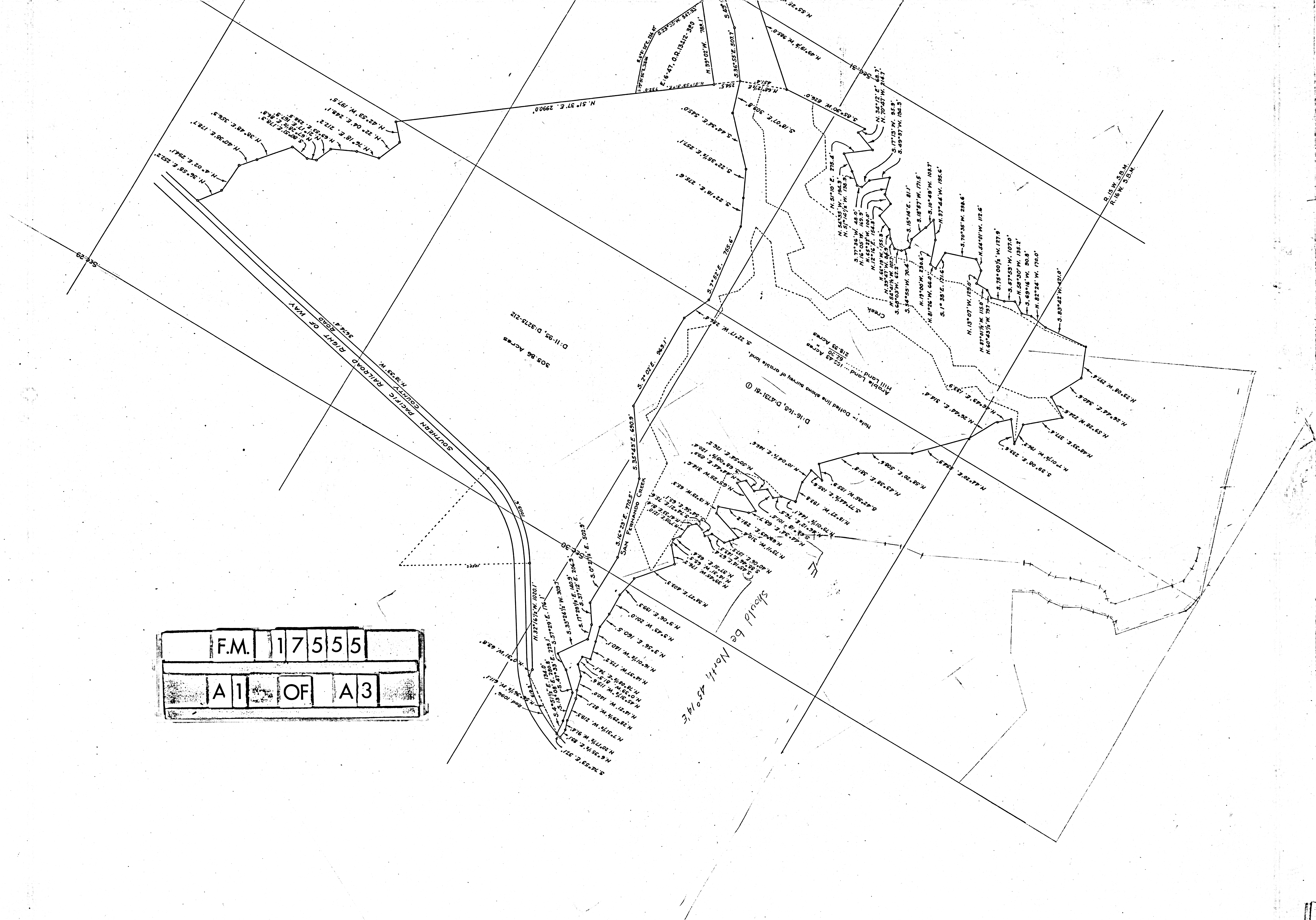
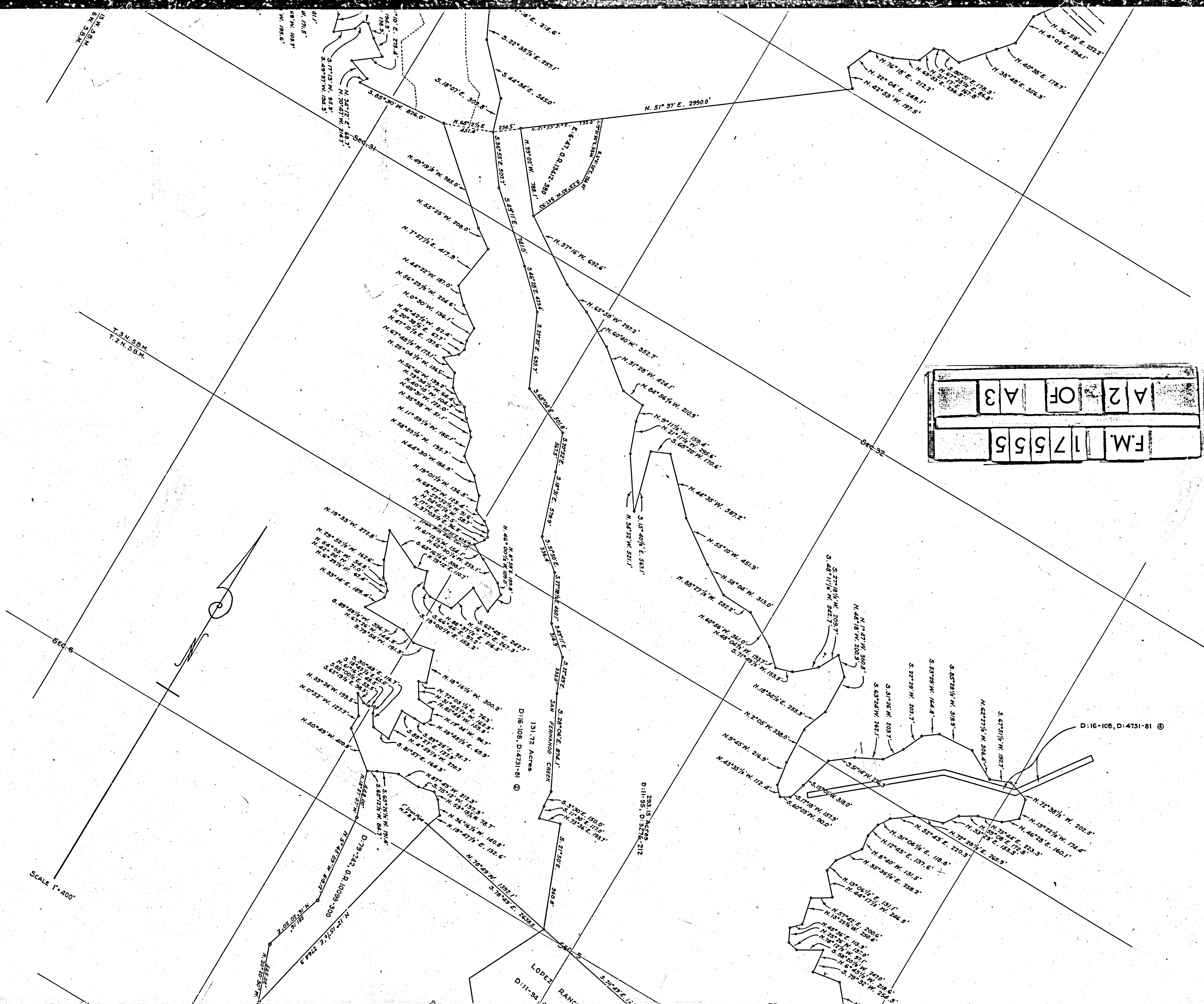


F.M. 17555
 A 1 OF A 3





F.M. 17555
A 2 OF A 3

SCALE 1"=400'

SEC-6

LOPEZ RANG

T.3N.58M
6 W. 35M
W. 185.6'

T.3N.58M
T.2N.58M

U.1'
W. 171.5'
N. 103.7'
W. 185.6'

N. 30° 45' W. 116.7'
S. 18° 00' E. 43.0'
S. 67° 10' E. 58.7'
N. 54° 50' W. 54.1'
N. 7° 21' W. 71.0'
N. 0° 52' W. 121.7'
N. 50° 45' W. 428.0'

D:79-242, D.R. 10089-300
N. 72° 15' 1/2" E. 2764.9'

N. 53° 25' W. 68.2'

N. 12° 15' 1/2" E. 2764.9'

N. 50° 45' W. 428.0'

N. 12° 15' 1/2" E. 2764.9'

N. 50° 45' W. 428.0'

N. 12° 15' 1/2" E. 2764.9'

N. 50° 45' W. 428.0'

N. 12° 15' 1/2" E. 2764.9'

N. 50° 45' W. 428.0'

N. 12° 15' 1/2" E. 2764.9'

N. 50° 45' W. 428.0'

N. 12° 15' 1/2" E. 2764.9'

N. 50° 45' W. 428.0'

N. 12° 15' 1/2" E. 2764.9'

N. 50° 45' W. 428.0'

N. 12° 15' 1/2" E. 2764.9'

N. 50° 45' W. 428.0'

N. 12° 15' 1/2" E. 2764.9'

N. 50° 45' W. 428.0'

N. 12° 15' 1/2" E. 2764.9'

N. 50° 45' W. 428.0'

N. 12° 15' 1/2" E. 2764.9'

N. 50° 45' W. 428.0'

D:16-108, D:4731-81

D:11-94

D:16-108, D:4731-81

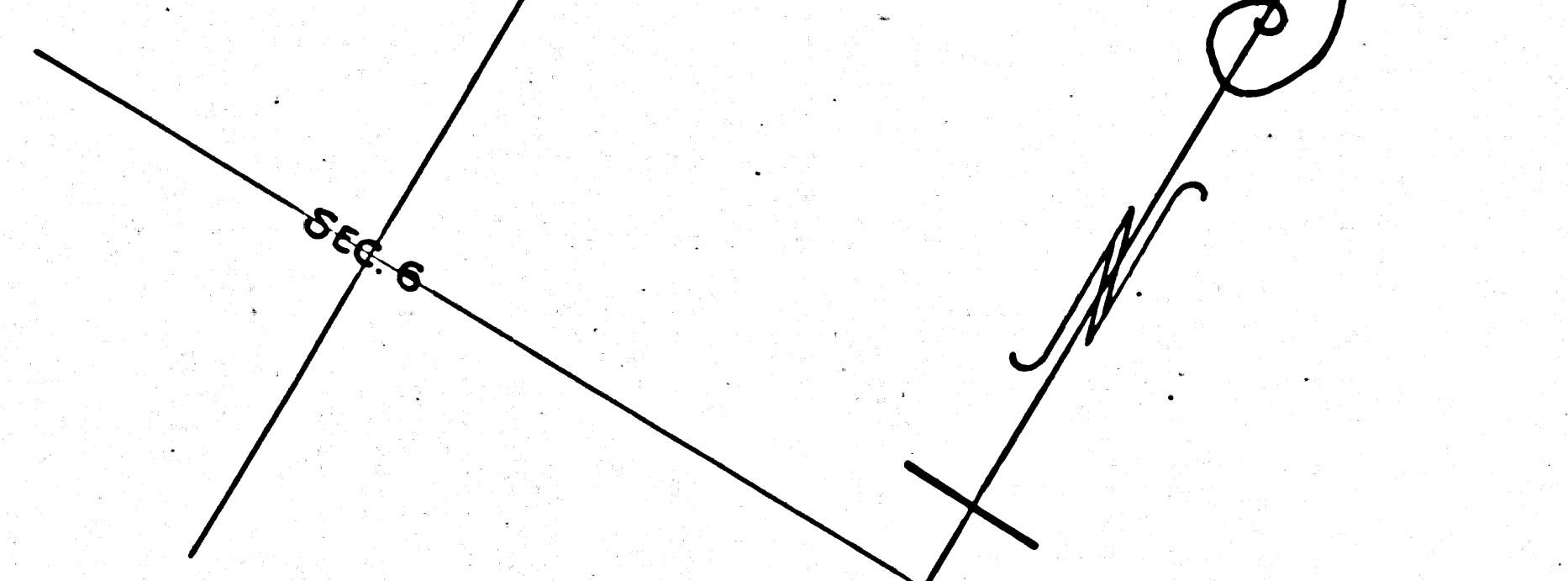
D:11-94, D:3278-212

D:11-94, D:3278-212

D:11-94, D:3278-212

D:11-94, D:3278-212

D:11-94, D:3278-212



MAP
SHOWING
PROPERTY SURVEYS
OF THE
SAN FERNANDO RESERVOIRS
OF THE
LOS ANGELES AQUEDUCT

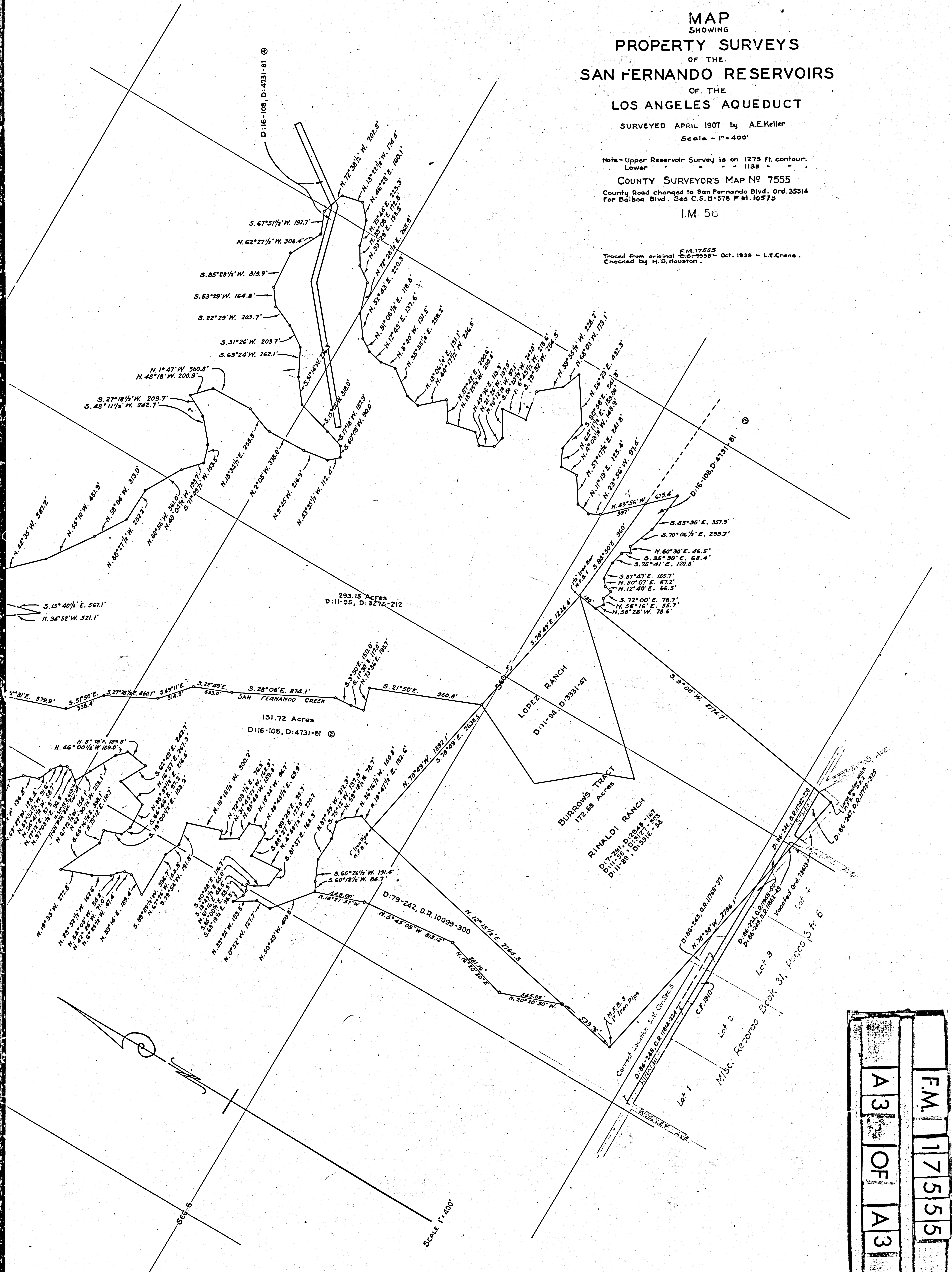
SURVEYED APRIL 1907 by A.E.Keller
Scale - 1" = 400'

Note - Upper Reservoir Survey is on 1275 ft. contour.
Lower " " " " " 1185 " " " "

COUNTY SURVEYOR'S MAP NO 7555
County Road changed to San Fernando Blvd. Ord. 35314
For Balboa Blvd. See C.S.B-578 F.M. 10572

I.M. 56

Traced from original F.M. 17555
C.S.B-555 - Oct. 1939 - L.T. Crane.
Checked by H.D. Houston.



F.M.	17555
A 3	OF
A 3	