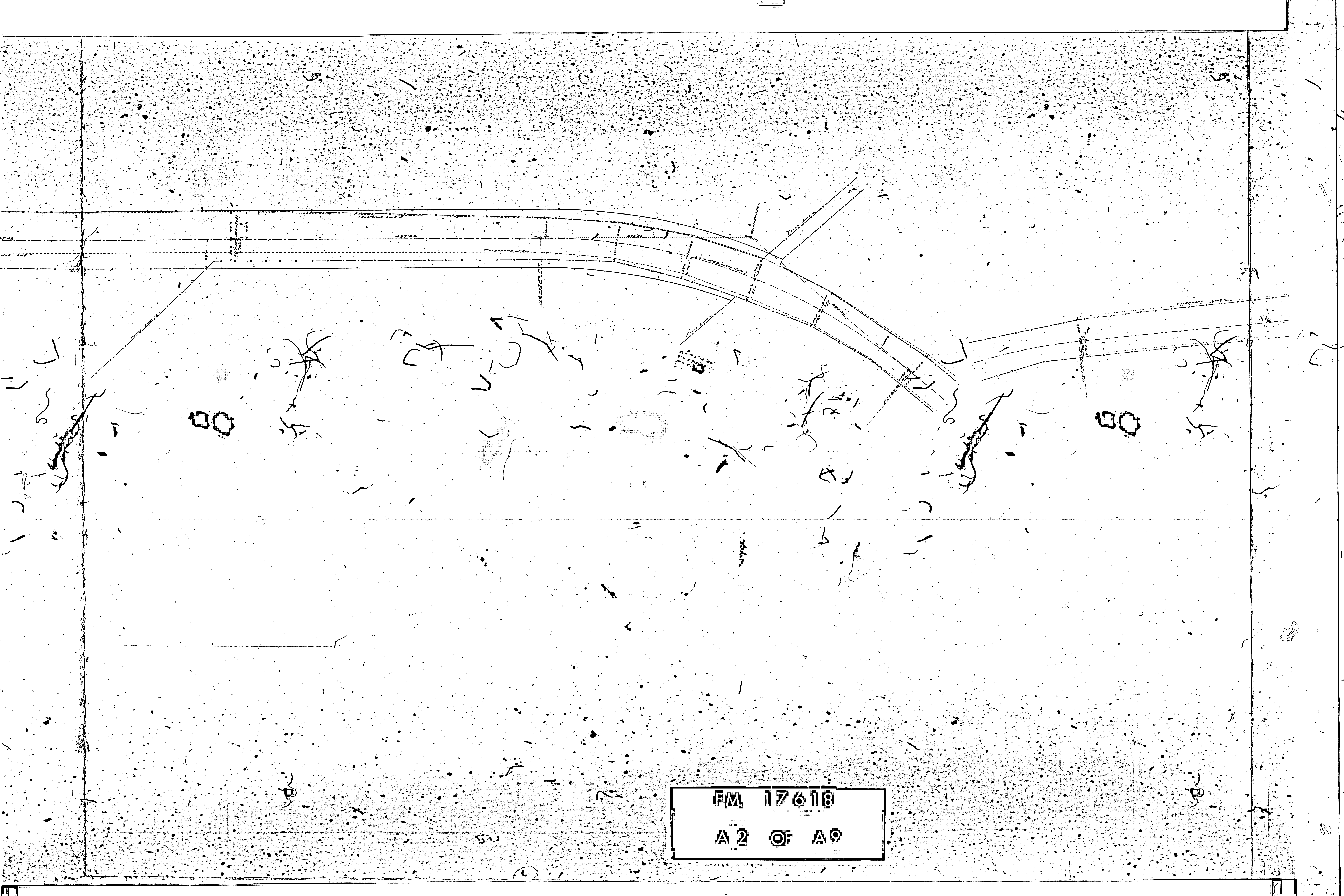


WASHINGTON STREET

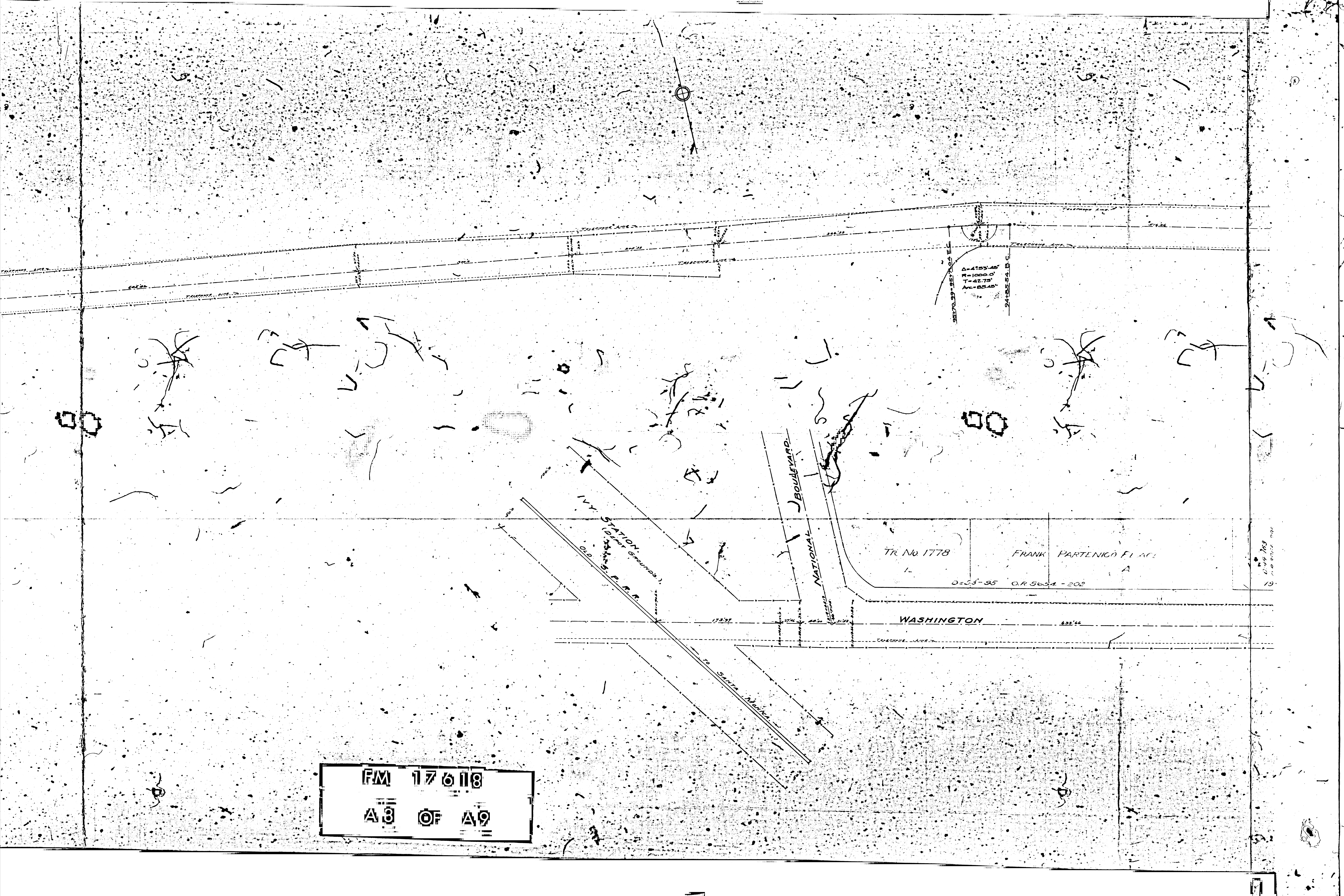
FM 17618

A1 OF A9



FM 17618

A 2 OF A 9



FM 17618  
A3 OF A9

0.44 103  
0.49 3205 285  
ALLEY  
720  
E. 23-720  
0.44 103  
0.49 3205 285

TRACT No. 3465

M.B. 44-24

STREET.

$\Delta = 18^{\circ} 05'$   
 $R = 800.0'$   
 $T = 127.31'$   
 $ARC = 252.49'$

210+33.21

200+43.98 S.C.

200+43.98 S.C.

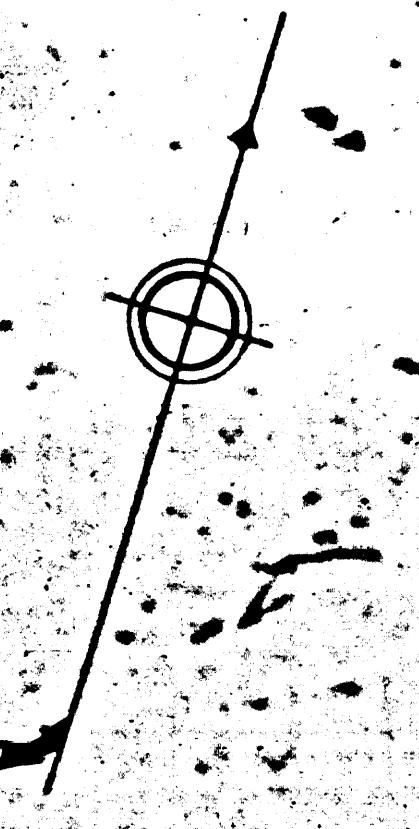
200+43.98 S.C.

$\Delta = 135^{\circ} 46' 30''$   
 $R = 625.85'$   
 $T = 75.0'$   
 $ARC = 149.27'$

WASHINGTON ST.

BEGINNING OF SECTION No. 2

FM 17618  
A 4 OF A 9



LOS ANGELES COUNTY HIGHWAY COMMISSION  
Div. 6 Sec. 2

# WASHINGTON STREET

FROM STA. 76+72.60 TO STA. 177+00

FB 81

Surveyed by C.A.S. July 1908. Approved March 25, 1910.  
Plotted by C.P.L. Traced by C.P.L. Graded by Mc C.  
*W.P. Baker*  
Chief Engineer

Scale: 1" = 50'

FILE No. A-253 b

RINPAU AVE.

ST.

ENDING OF SECTION No. 2  
END OF SECTION No. 1  
AT STA. 76+72.60

FM 17618  
A 5 OF A 9

Name of Washington St. Section

D. 2278, D. 3515 - 74, LOT A, L. 11, 12, 13, 14, 15, 16, 17, 18, 19, 20, 21, 22, 23, 24, 25, 26, 27, 28, 29, 30, 31, 32, 33, 34, 35, 36, 37, 38, 39, 40, 41, 42, 43, 44, 45, 46, 47, 48, 49, 50, 51, 52, 53, 54, 55, 56, 57, 58, 59, 60, 61, 62, 63, 64, 65, 66, 67, 68, 69, 70, 71, 72, 73, 74, 75, 76, 77, 78, 79, 80, 81, 82, 83, 84, 85, 86, 87, 88, 89, 90, 91, 92, 93, 94, 95, 96, 97, 98, 99, 100

LOS ANGELES COUNTY HIGHWAY COMMISSION  
Div. 6 SEC. 3 (Portion Of)  
**WASHINGTON STREET**  
FROM STA. 177+00 TO STA. 221+90.62  
FB. 81.

Surveyed by C.A.S. July 1903. Approved March 25, 1910.  
Plotted by C.P.L. *A.F. Loder*  
Traced by C.P.L. Chief Engineer  
Graded by Mc C.

Scale: 1" = 50'  
FILE No. A-253c

FM 17618  
A 6 OF A 9

Beginning of Section 3 End of Section 2

ADAMS ST

$\Delta = 607.30'$   
 $R = 1000.0'$   
 $T = 70.65'$   
 $Angle = 141.52'$

WATER TULE

1842220 = 1842238 E.C.

1024000 = 1024000 D.C.

177+00

177+00

177+00

177+00

177+00

177+00

177+00

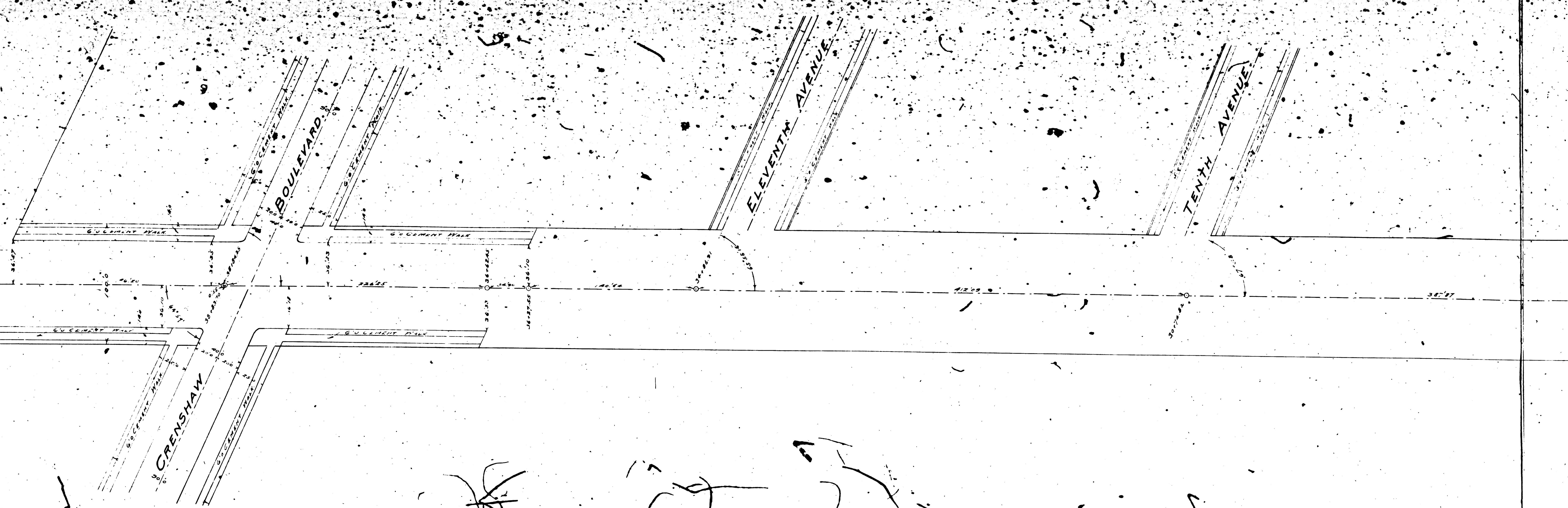
177+00

177+00

177+00

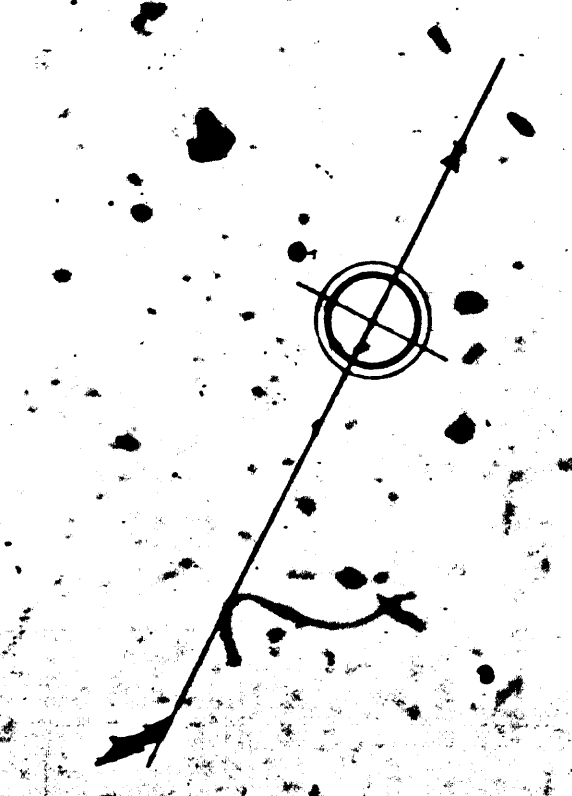
177+00

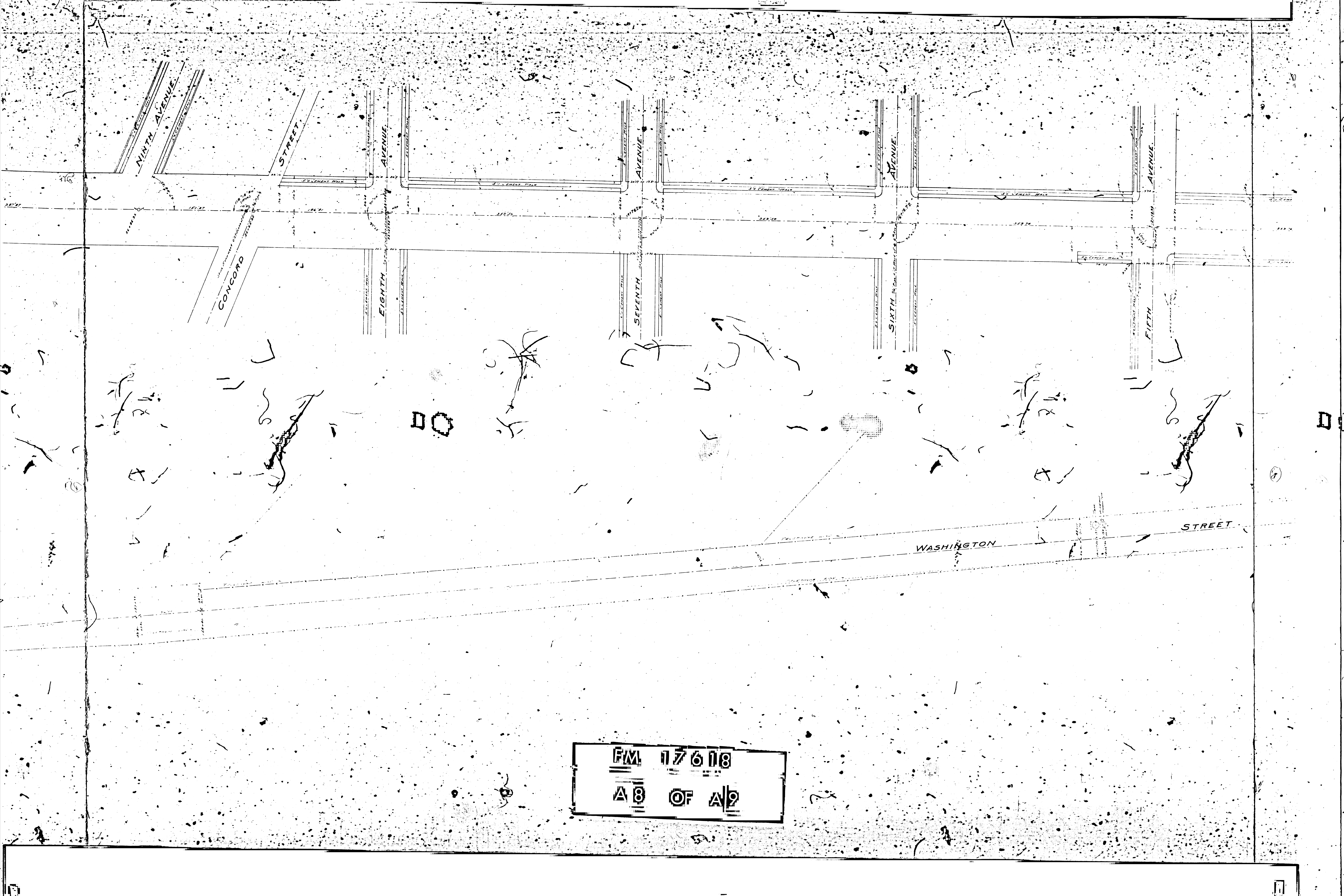
DO



157120-09 BC  
A-454615  
R-10000  
T-2166  
A-8327

FM 17618  
A17 OF A9

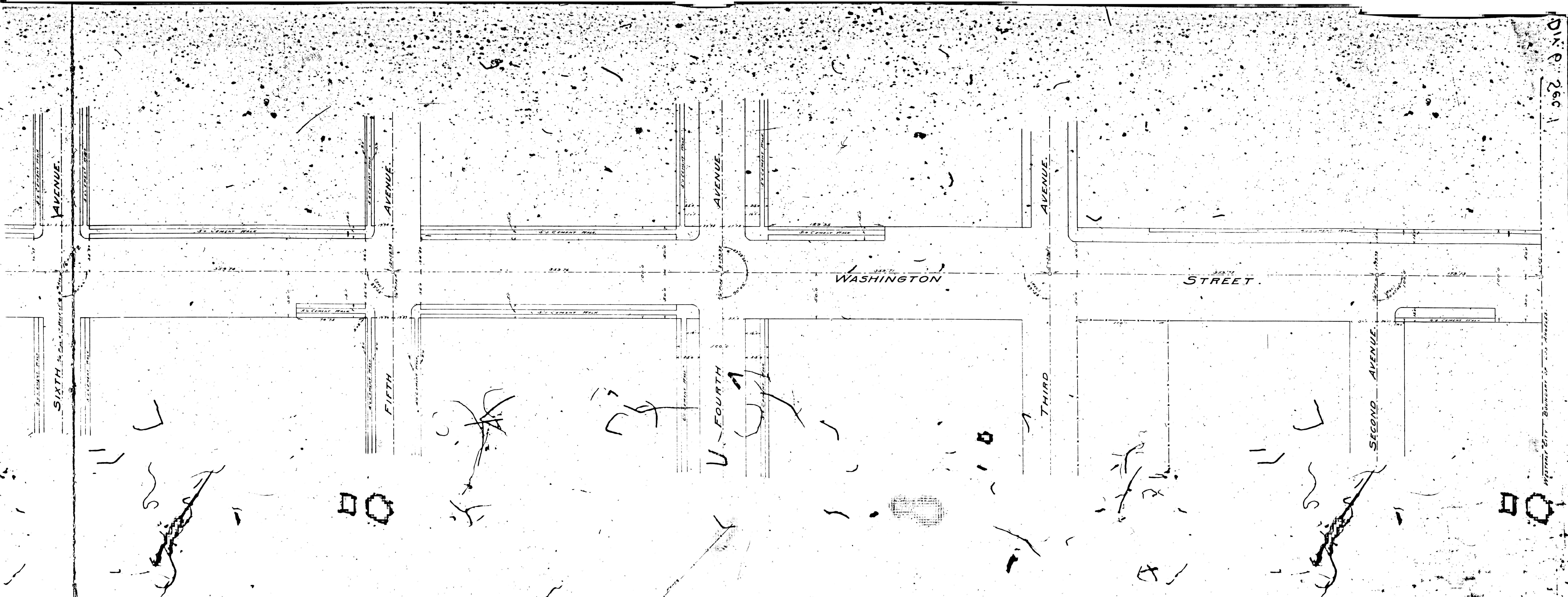




F.M. 17618  
A 8 OF A 9



DIV. 6. 260 1



LOS ANGELES COUNTY HIGHWAY COMMISSION  
 DIV. 6. SECTION 1.  
**WASHINGTON STREET.**

FROM STA. 0+00 WESTERLY BOUNDARY CITY OF LOS ANGELES TO STA. 221+90.62

SURVEYED. JULY, 1909.

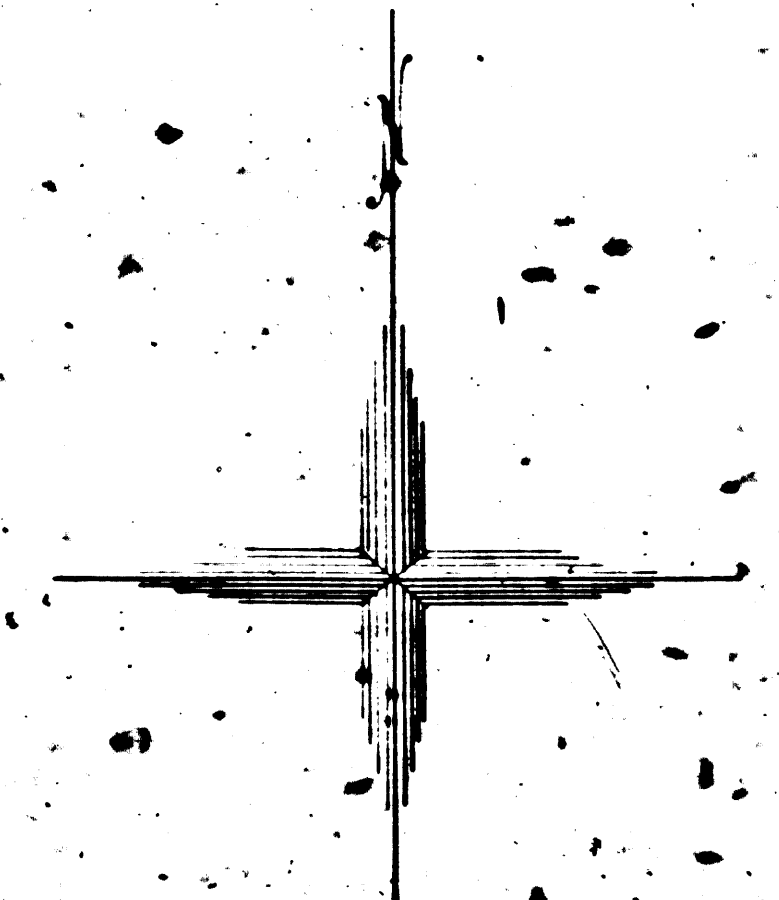
Scale 1, Inch = 50 Ft

Field Work by C.A.S.  
 Office Work by C.P.L.

A.E. Loder, Chief Engineer

F.B. 81.  
 L.B. 207 & 208

FM 17618  
 19 OF 19



DIV. 6. 260 1