

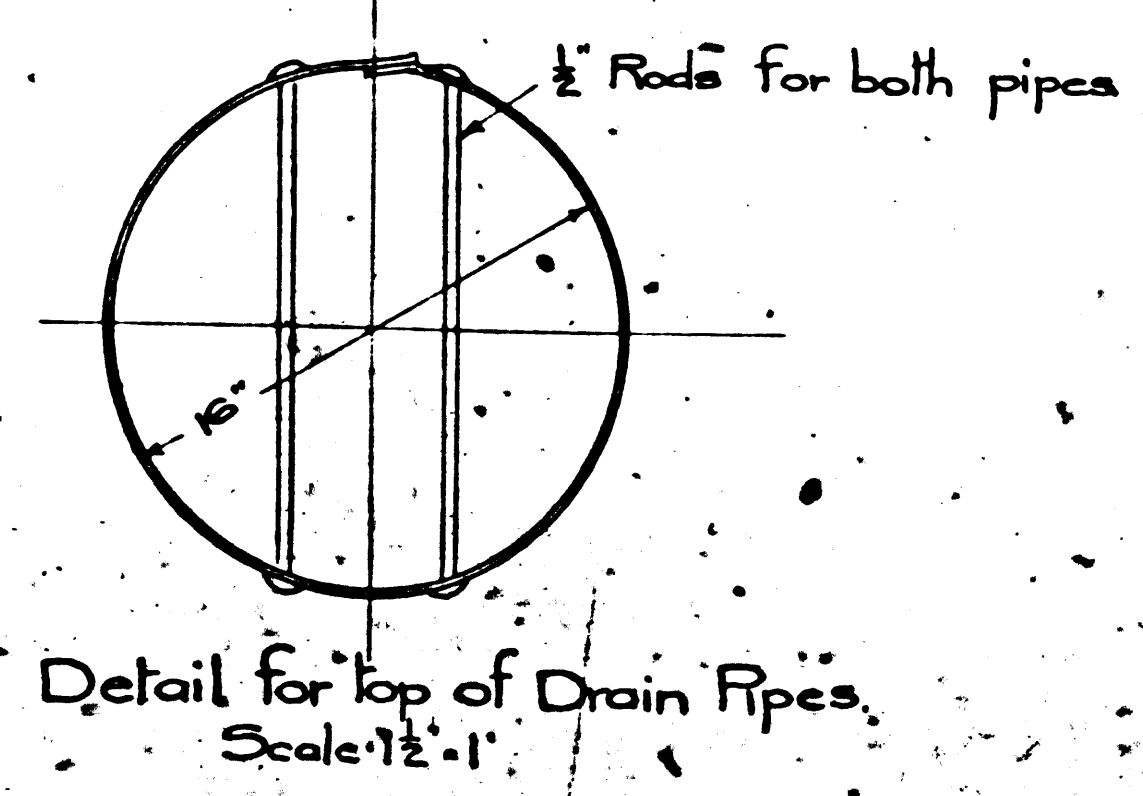
Note: Position and length of drain pipe for North Portal to be the same as for South Portal.

This line to remain the same for both Concrete and Brick masonry

No paving required in this contract.

Depth of Gutters to be determined by the Engineer

Note: Besides a combination of brick and concrete, as shown on these plans, figures will be submitted for an all concrete lining with the arch ring above the spring line 18" thick instead of 21" as shown for brick.



LOS ANGELES COUNTY HIGHWAY COMMISSION
Div. No. 2

SAN FERNANDO ROAD
DETAILS FOR TUNNEL AT NEWHALL GRADE

Field Book 45
Level 68
Scale 3/8" = 1' Nov. 16-1909
A.E. Loder Chief Engineer
W.D.A.

EX-1176318-41

C-610