

F.M. 17647-1-1  
 A11 OF A2

# GLENDORA

## MOUNTAIN ROAD

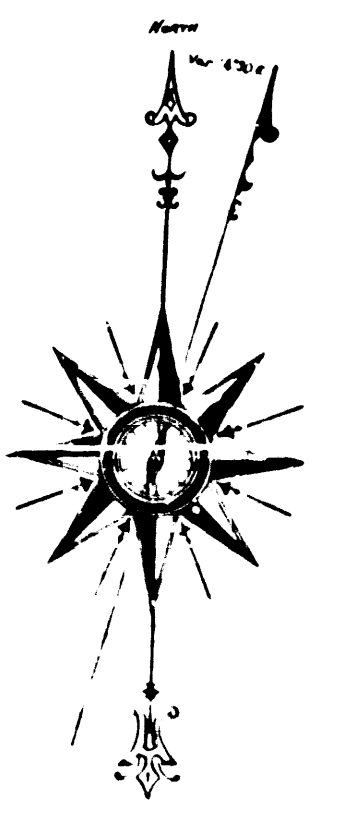
Scale, 1 in. = 20 ch.

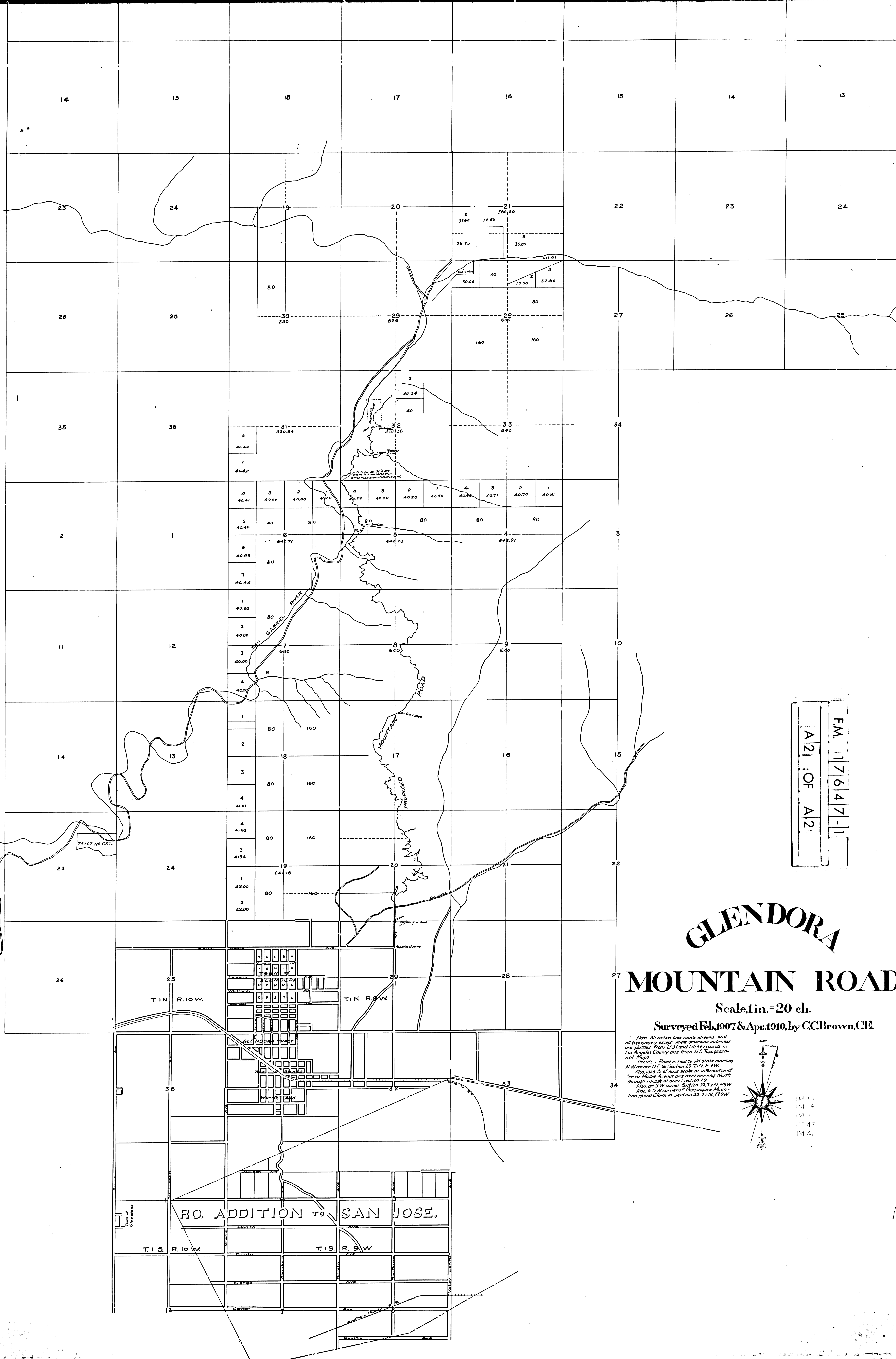
Surveyed Feb. 1907 & Apr. 1910, by C.C. Brown, C.E.

*Note* - All section lines, roads, streams and all topography except where otherwise indicated are plotted from U.S. Land Office records in Lead Project County and from U.S. Topographical Maps.

*Results* - Road is laid to old state marking N.W. corner NE 1/4 Section 29 T.10N. R.9W. Also 1/2 S. of said state of intersection of S. 24th Avenue and road running North through middle of said Section 29.

Also of S.W. corner Section 32 T.11N. R.9W. Also of S.W. corner of Arkansas Mountain Home Chm in Section 32, T.11N. R.9W.





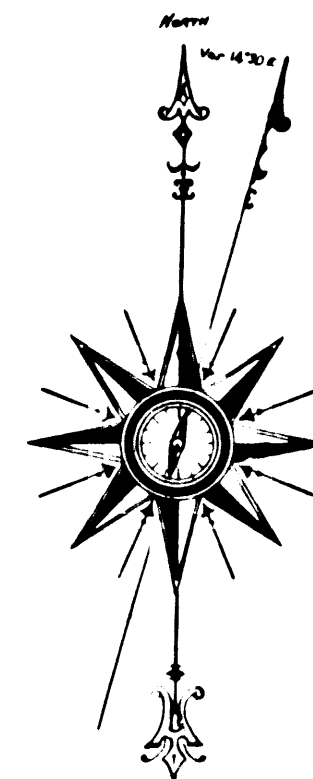
FM. 17647-11  
A21 OF A2

# GLENDORA MOUNTAIN ROAD

Scale, 1 in. = 20 ch.

Surveyed Feb. 1907 & Apr. 1910, by C.C. Brown, C.E.

*Note* - All section lines, roads, streams, and all topography, except where otherwise indicated are plotted from U.S. Land Office records in Los Angeles County and from U.S. Topographical Maps.  
*Results* - Road is tied to old state marking N.W. corner N.E. 1/4 Section 29, T.1N., R.9W. Also, 1328.5' of said state at intersection of Serra Avenue and road running North through middle of said Section 29. Also, at S.W. corner Section 32, T.1N., R.9W. Also, to S.W. corner of Bergingers Mountain Home Claim in Section 32, T.1N., R.9W.



1911  
1914  
1917  
1947  
1948