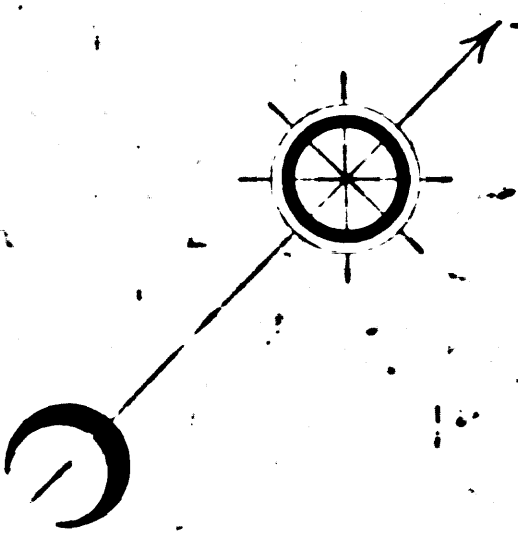


No. 9774
M.B. 180 64 66

LOS ANGELES
PRESSED BRICK CO.

SOLD FILE 10453

G. P. COMPANY
M. R. 55-13, 56



NEG 588-18 INDEX 21

18

LOS ANGELES PACIFIC CO.
S. P. DIVISION:

Station 236+00 To Station 300+70
SCALE 1"=200' F.B. 46. DEC. 1909.

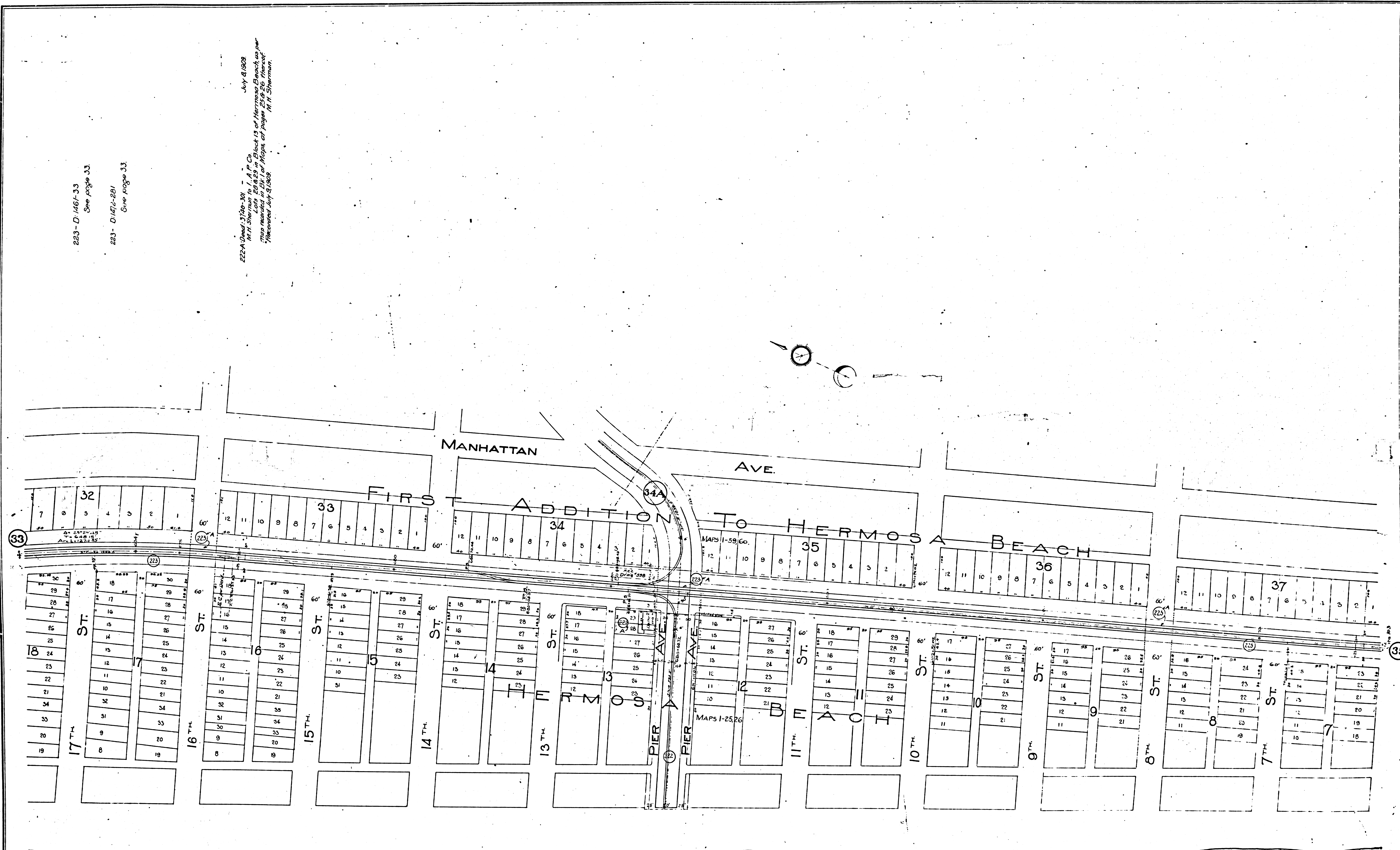
F.M. 17656-2

A 11 OF A 7

223-D-1467-33
See page 33

223-D-1472-281
See page 33

July 8 1909
M.H. Sherman to J. A. P. Co.
Lots 28 & 29 in Block 13 of Hermosa Beach as per
map recorded in Maps of Los Angeles
Recorded July 31 1909

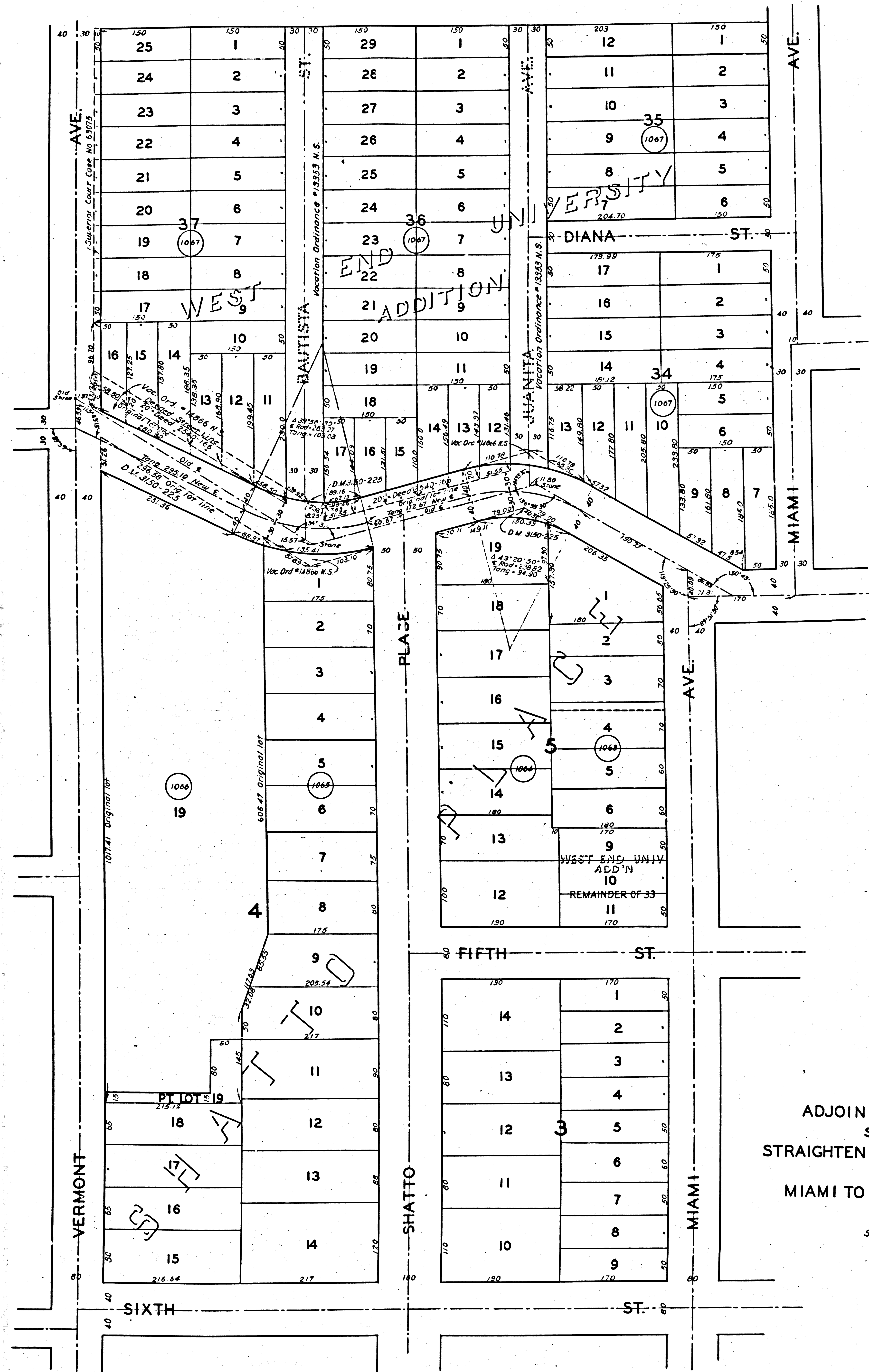


NOTE: For Sheet 19 see Part 1

F.M.	17	656	-2
A	2	OF	A7

LOS ANGELES PACIFIC CO.
 REDONDO DIVISION
 Station 674+ to Station 703+ C
 Scale 1"=100' F.B.64 Feb 1909
 C.F. 1500
 NEG. 588-22 INDEX 25

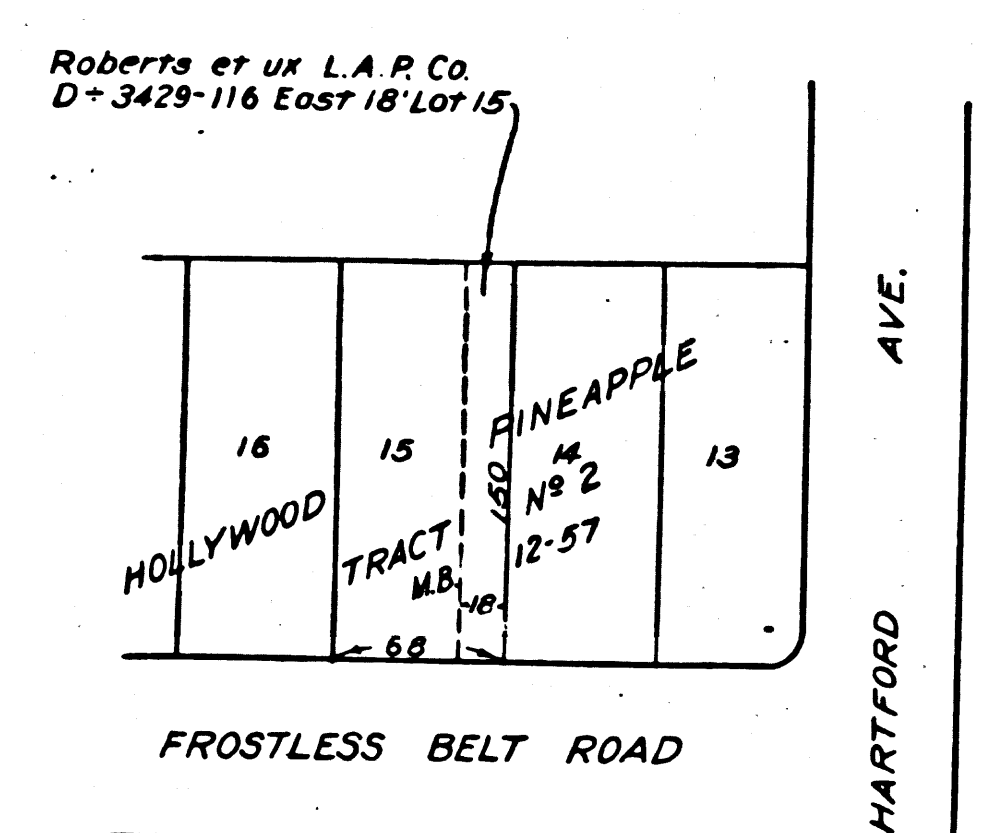
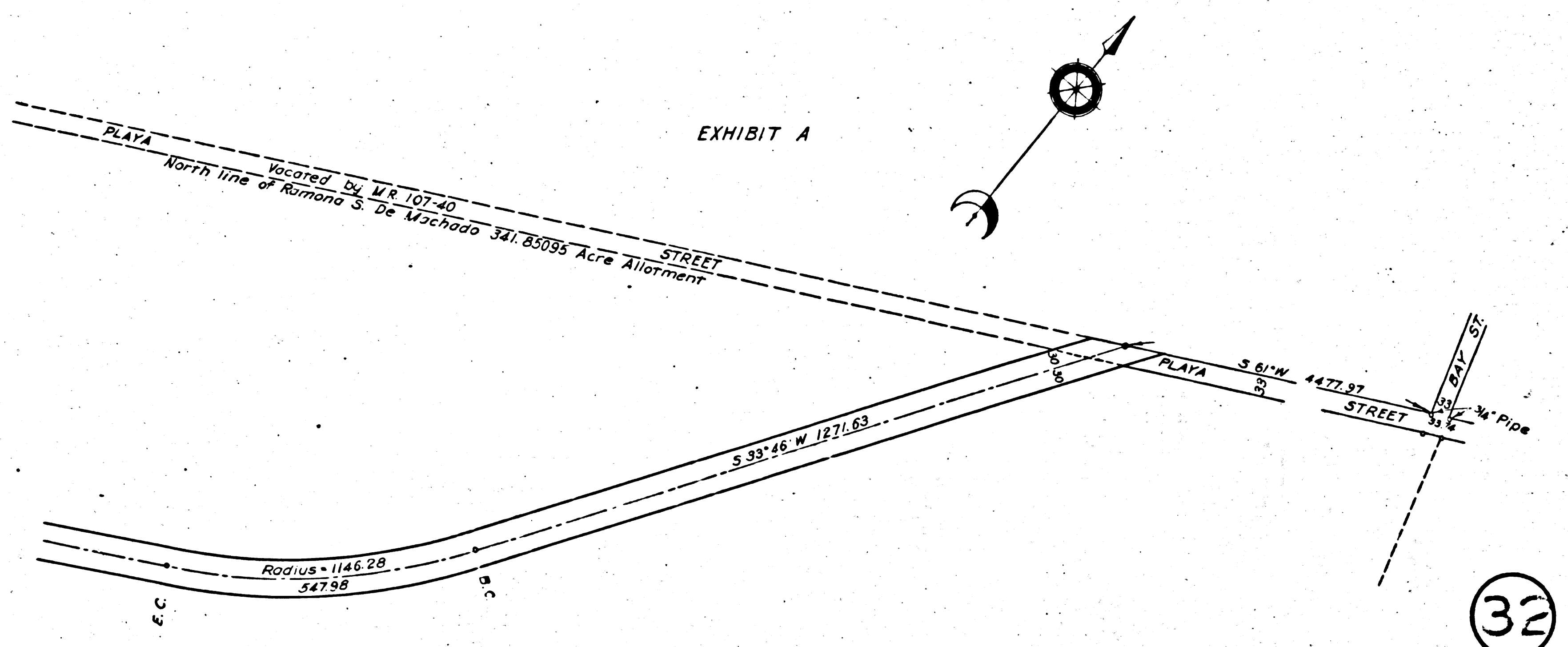
22



PLAT
OF
ADJOINING PROPERTY
SHOWING
STRAIGHTENING OF FOURTH ST.
FROM
MIAMI TO VERMONT AVES.

Scale 1" = 100'
I.M. 9

Reference +
 Vacated of Bautista St - Vac. Ord. No. 13353 Adopted 6-19-05
 Juanita Ave. - 13353 6-19-05
 Triangular Pt. at 4th & Juanita Vac. Ord. No. 14866 Adopted 1-7-07
 adj. Lot 1, Blk. 4 S.P. 14866 1-7-07
 Being the S 1/4 pt. & pc. adj. Blk. 37 W.E. Un. Add. 1-7-07
 W 1/4 of Blk. 37, W.E. Un. Add. Superior Court Case No. 63075
 Decided for Sr. purposes - N 1/4 pt. Lot 19 & N.W. 1/4 cor. Lot 1, Blk. 4, Shatto Pl. D.M. 3150-225 Dated 8-17-07
 - N.E. cor. Lot 19 & N.W. cor. Lot 1, Blk. 5 3150-225 8-17-07
 - Pt. Lot 17, Blk. 36, W.E. Un. Add. & pt. of vac. Bautista St. 3150-225 8-17-07
 Vermont Ave. widening D: 35-66, O.R. 1600-328



F.M. 17656-2
A 6 OF A 7

I.M. 40

NEG. 588-30-31-32

32
30 31

