

Beginning of Contract, Sec. 3.  
Specifications No J02

See Map A-208

MAIN STREET  
COMPTON  
367+34

L. N. Letteau

L. N. Letteau

LOS ANGELES COUNTY HIGHWAY COMMISSION

Div. 15 - Secs. 3-4 & 5

# LONG BEACH BOULEVARD

FROM MAIN ST., COMPTON, TO CUDAHY RANCH.

Scale 1 in. = 50 ft.

Field Work by C.A.S. Feb., 1909.

Platted " T.V.H. "

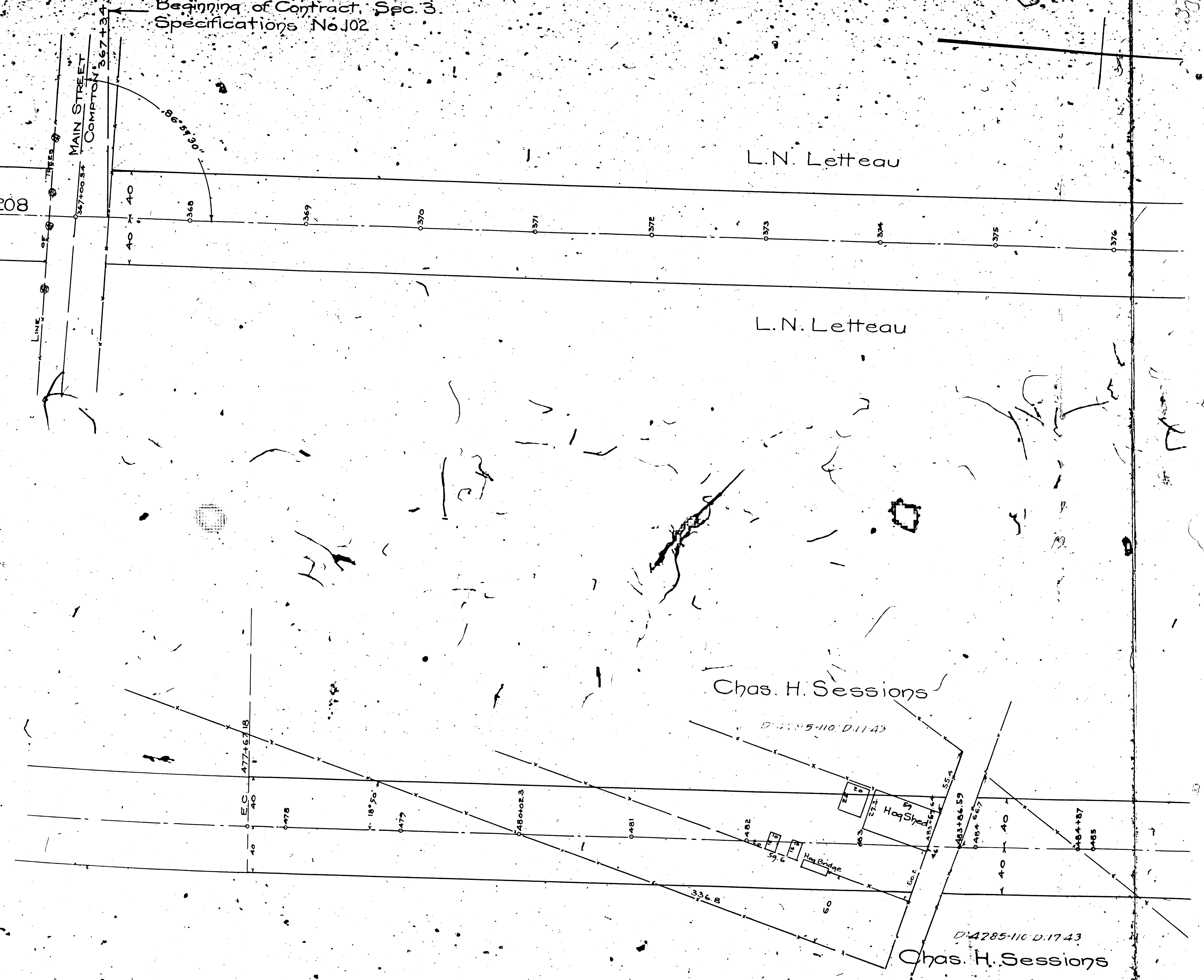
Traced " C.N.W. Dec. 1910.

F.B. - 25

Approved Jan. 7 - 1911.

*A.E. Roden*  
Chief Engineer.

FILE No. A-354



FM 17681-12  
A 1 OF A 8

Lula M. Letteau

Lula M. Letteau

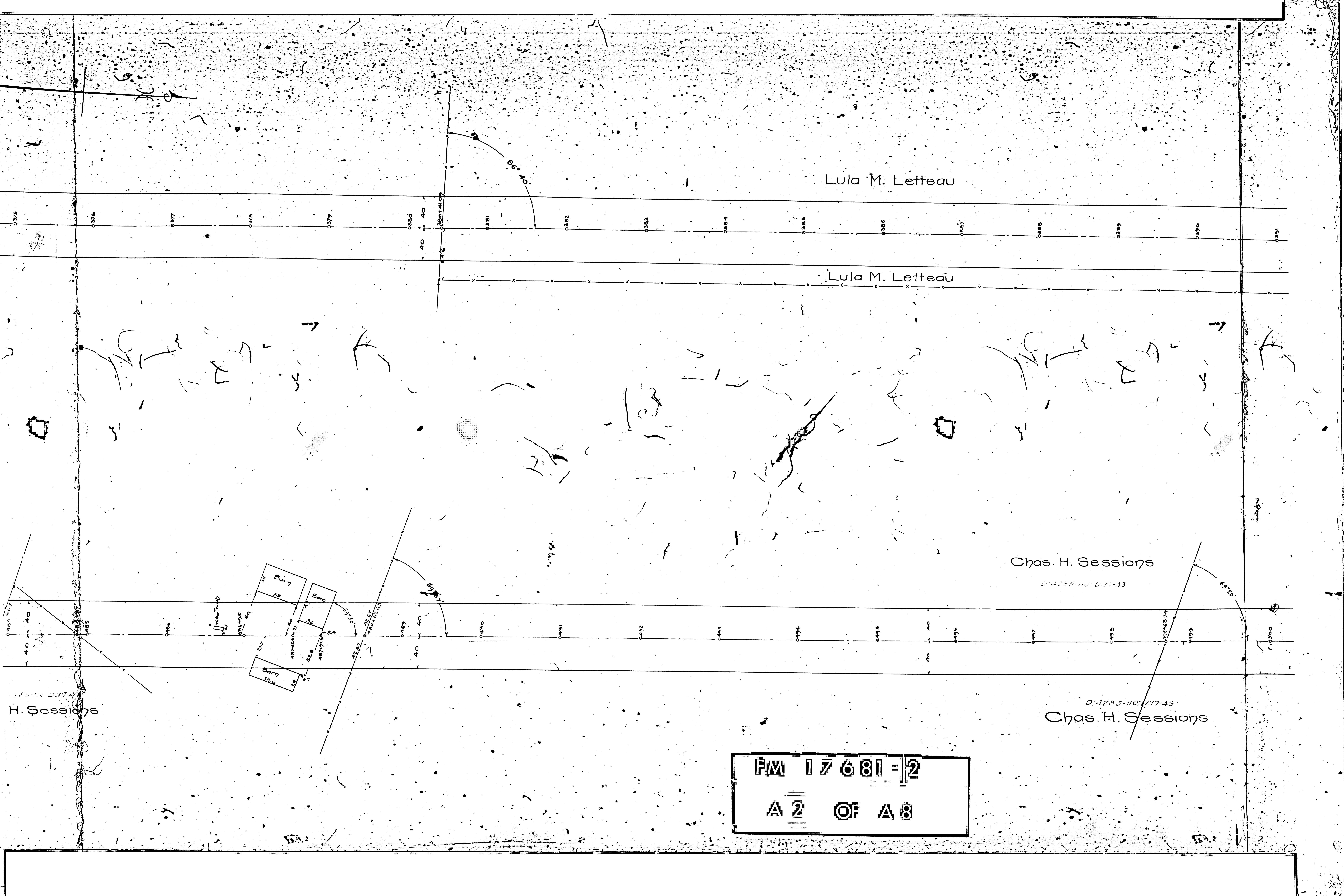
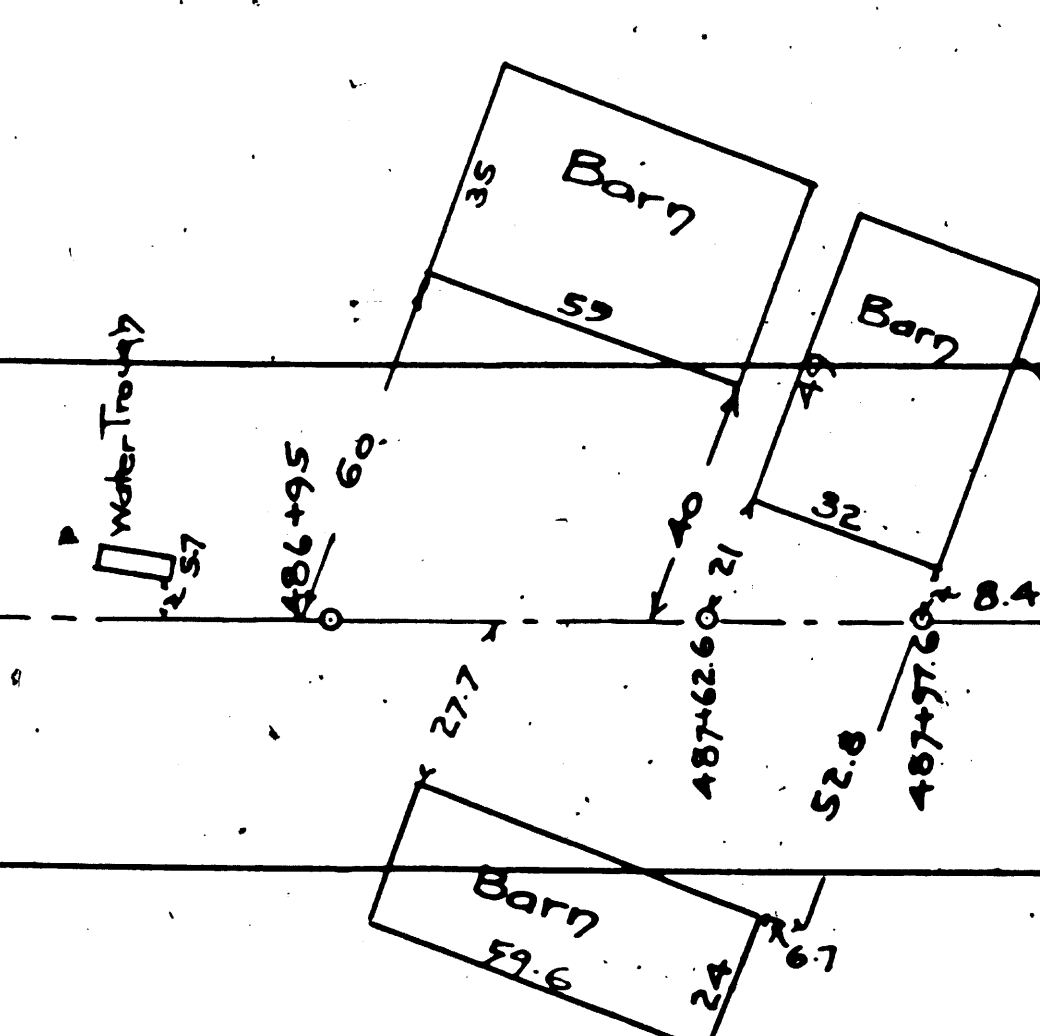
Chas. H. Sessions

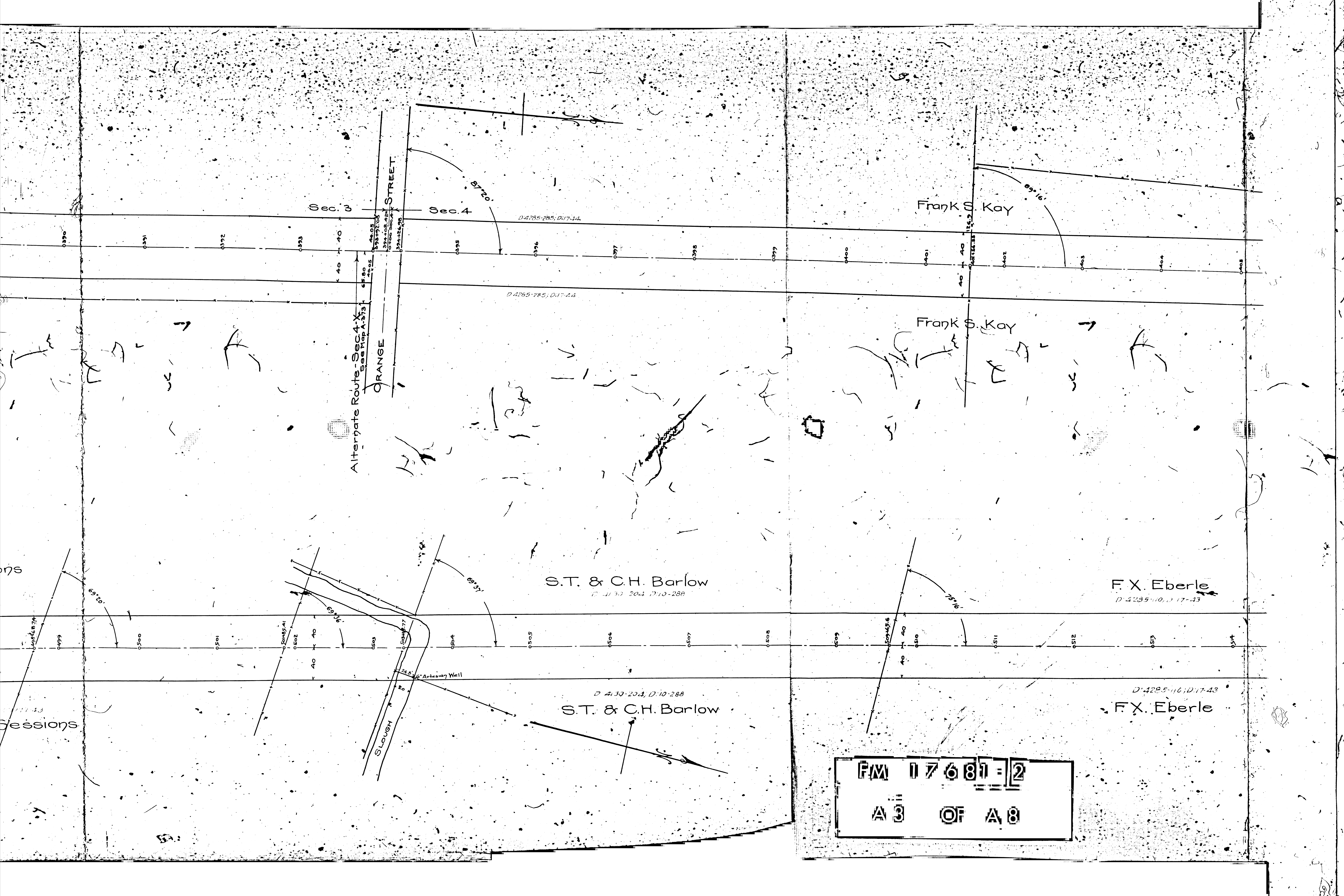
D:4225-110; D:17-43

D:4225-110; D:17-43  
Chas. H. Sessions

PM 17681-2  
A 2 OF A 8

H. Sessions





Sec. 3

Sec. 4

Frank S. Kay

Frank S. Kay

S.T. & C.H. Barlow

F.X. Eberle

S.T. & C.H. Barlow

F.X. Eberle

Alterdate Route - Sec. 4 - X  
See Map A-373

ORANGE STREET

SLOUGH

Artesian Well

D:4285-285; D:17-14

D:4285-285; D:17-24

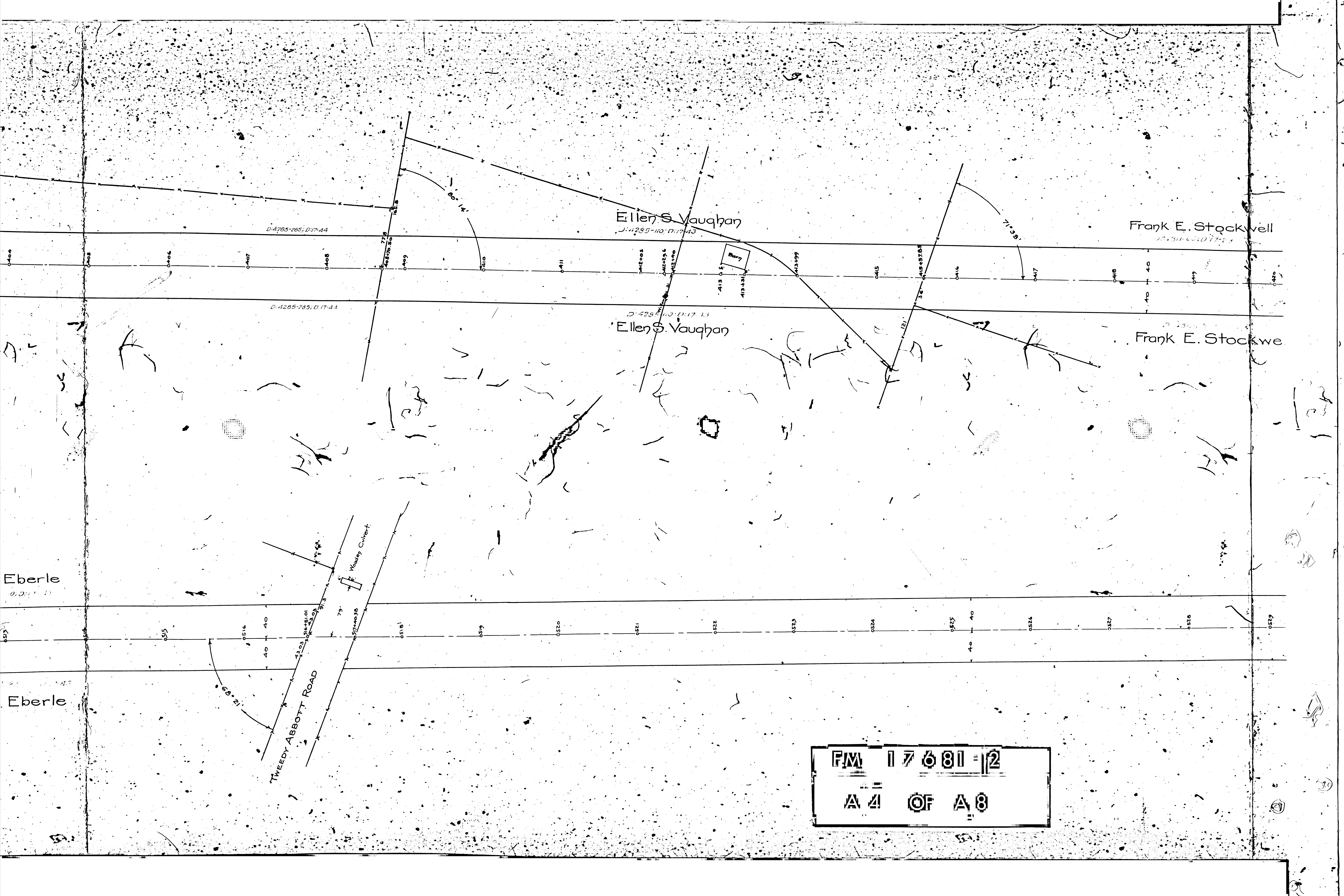
D:4130-204; D:10-288

D:4285-10; D:17-13

D:4130-204; D:10-288

D:4285-10; D:17-43

FM 17681-2  
A 3 OF A 8



Ellen S. Vaughan  
D: 4285-110, D: 17-43

Frank E. Stockwell  
D: 4311-65, D: 17-24

Ellen S. Vaughan  
D: 4285-110, D: 17-13

Frank E. Stockwell  
D: 4311-65, D: 17-24

Eberle  
D: 4211-13

Eberle

TWEEDY ABBOTT ROAD

Wesley Colliery

Bury

FM 17681-12  
A 4 OF A 8

E. Stockwell  
31-63; D:17-23

John T. Daetweiler  
D-286-10; D:17-47

E. Stockwell  
331-63-D:17-23

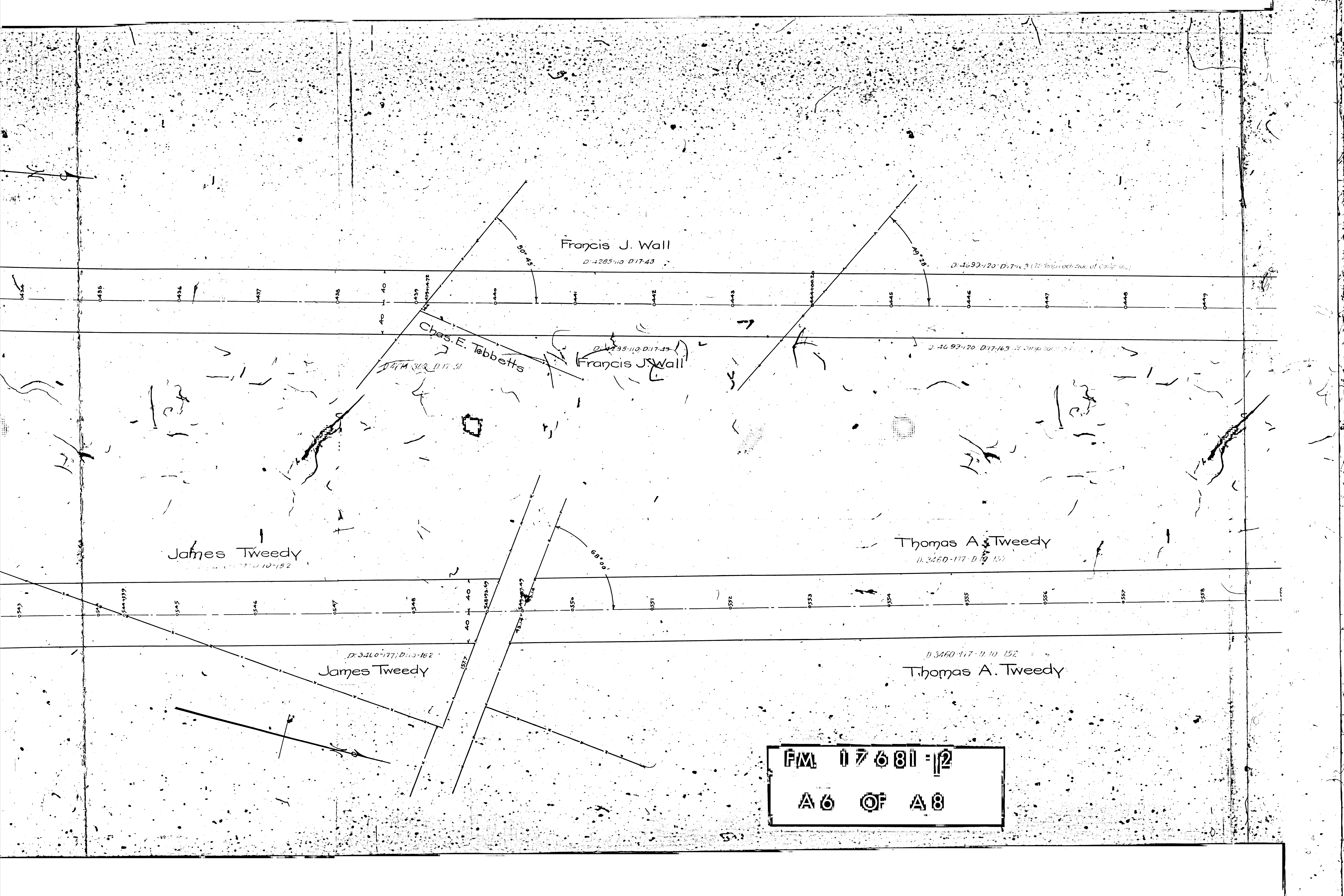
John T. Daetweiler  
D-286-10-D:17-47

J. L. Fleming  
D-286-10-D:17-47

J. L. Fleming  
D-286-10-D:17-47

FM 17681-2

A 5 OF A 8



Francis J. Wall

D-4285-110 D-17-43

D-4693-120 D-17-43 (1/2 Strip each Side of Center Line)

Chas. E. Tabbetts

D-4114-302 D-17-51

Francis J. Wall

D-4285-110 D-17-43

Thomas A. Tweedy

D-3460-177 D-10-152

James Tweedy

D-3410-177 D-10-152

James Tweedy

D-3410-177 D-10-152

Thomas A. Tweedy

D-3460-177 D-10-152

FM 17681-12  
A6 OF A8

Edward W. Lewis

Edward W. Lewis

Thomas A. Tweedy

Thomas A. Tweedy

Fred Württenberger  
D. 428-101; D. 17-47

Mrs. Clara Oeller  
D. 270-14

D. AC 99-120; D. 17-163

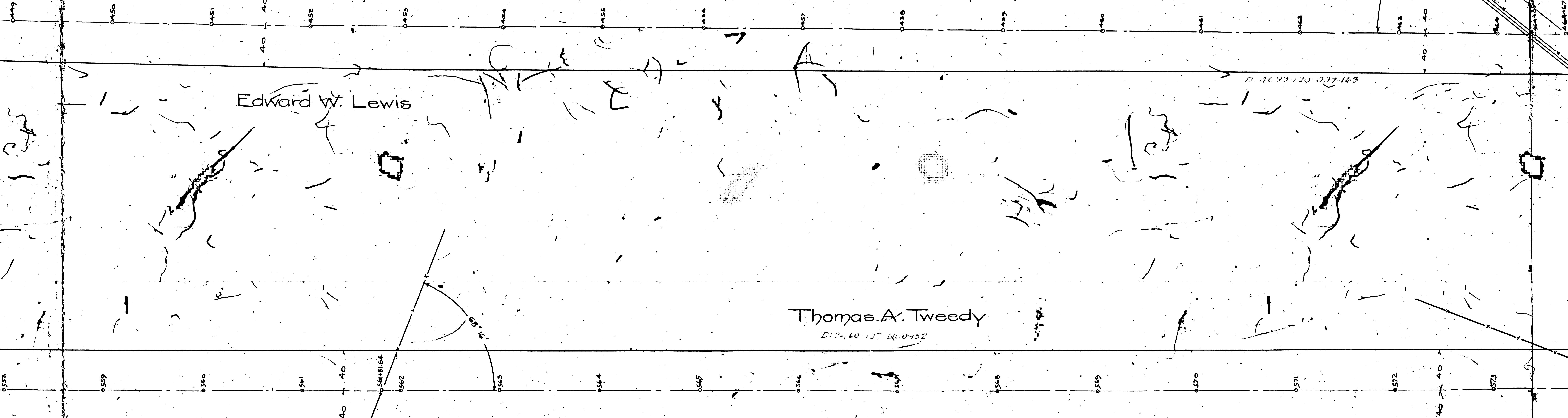
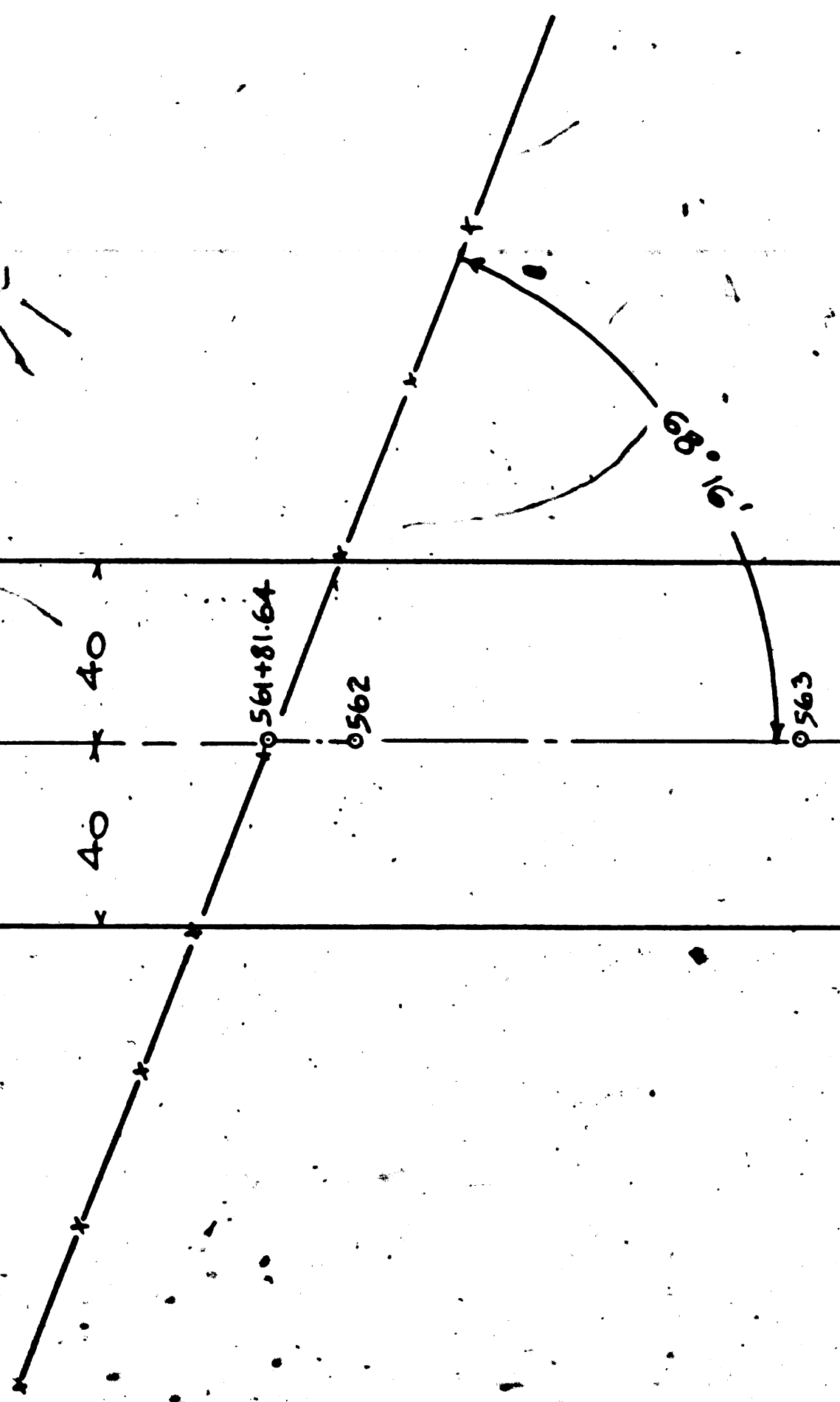
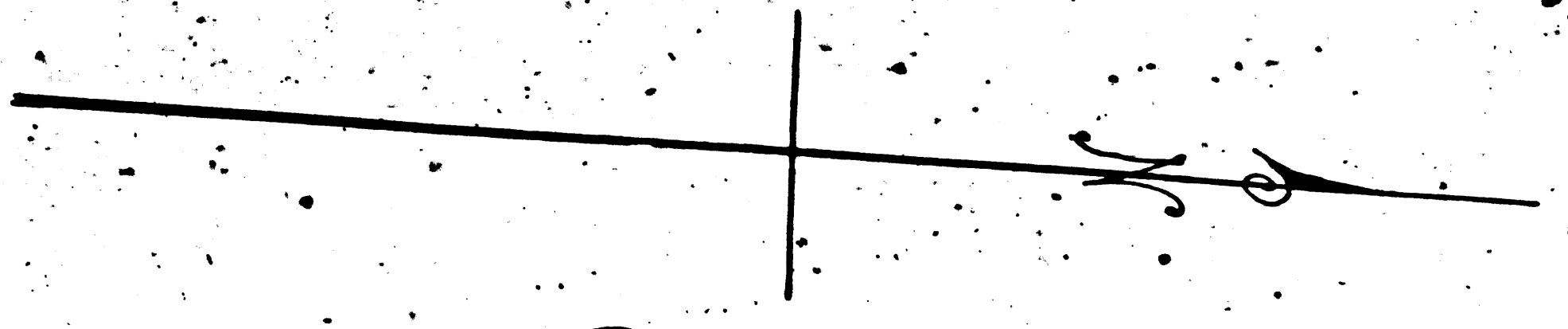
D. AC 99-120; D. 17-163

D. 24-60 17; D. 10-152

D. 24-60 17; D. 10-152

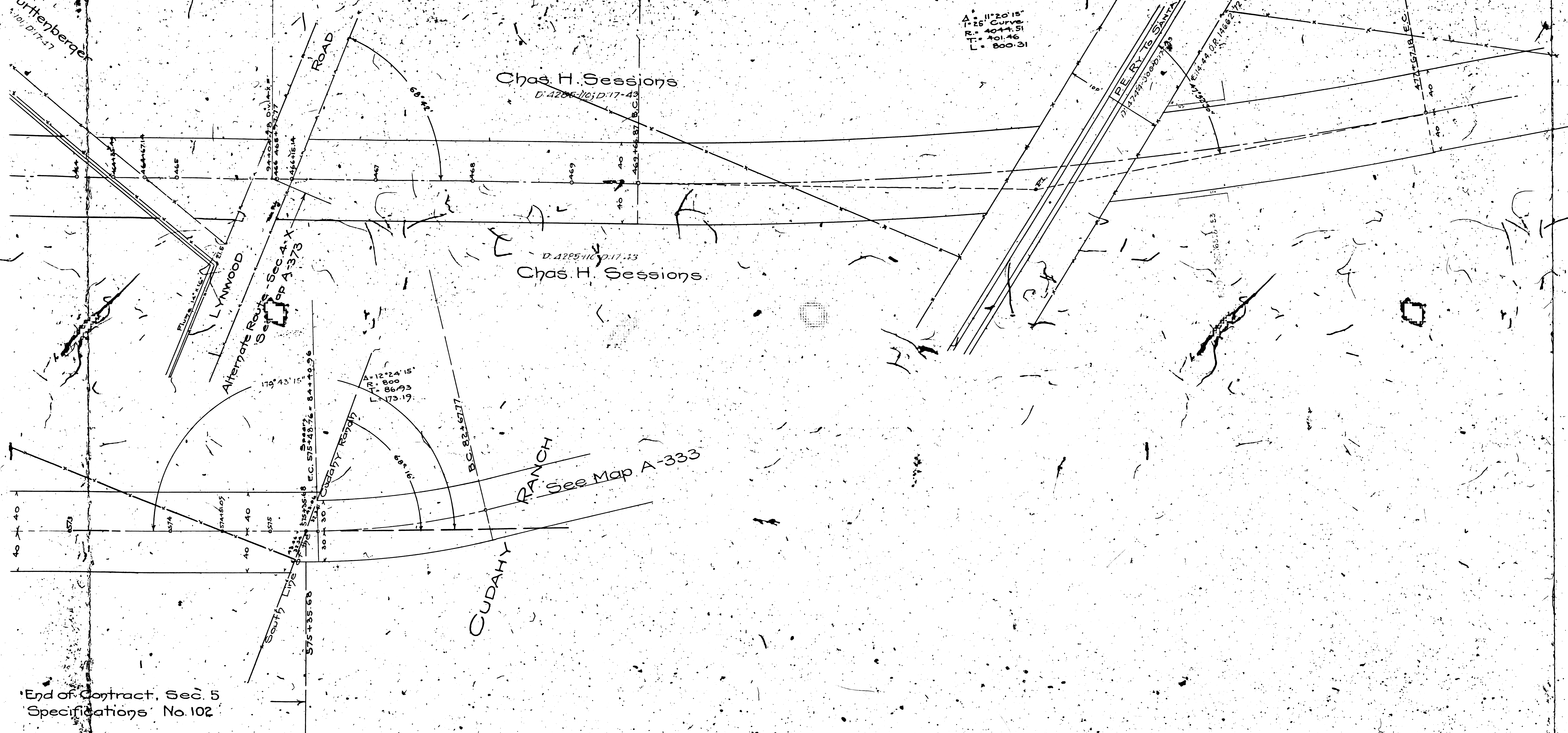
End of Contract  
Specifications

FM 17681-2  
A7 OF A8



Wurtenberger  
101, 017-27

Sec. 4      Sec. 5



End of Contract, Sec. 5  
Specifications No. 102

F/M 17681-2  
 A 8 OF A 8