

Note: The survey for deeds in Escrow was made by E. H. Wright

P.M. 17681 - 4

A 1 OF A 3

MAP OF
LONG BEACH BOULEVARD

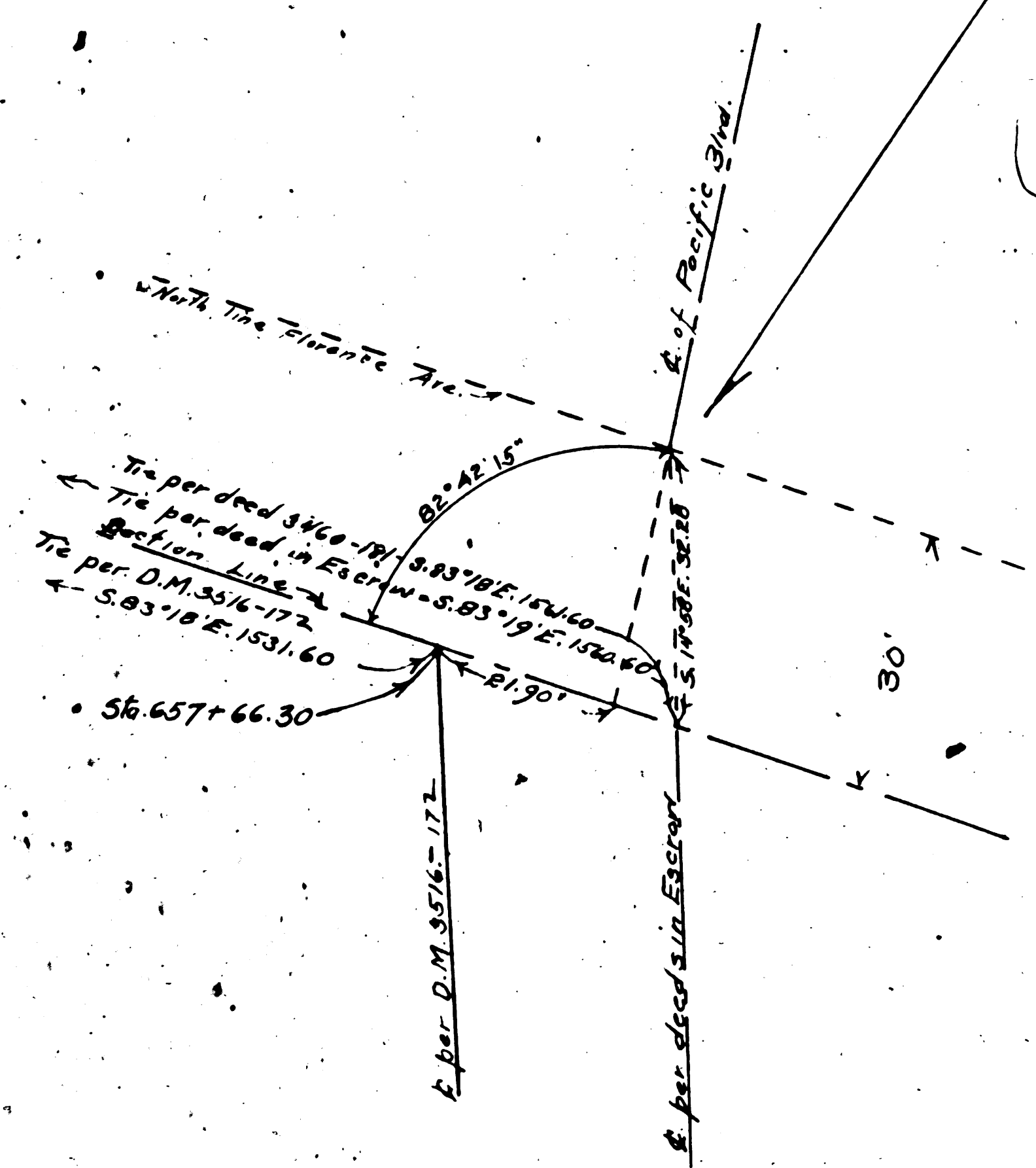
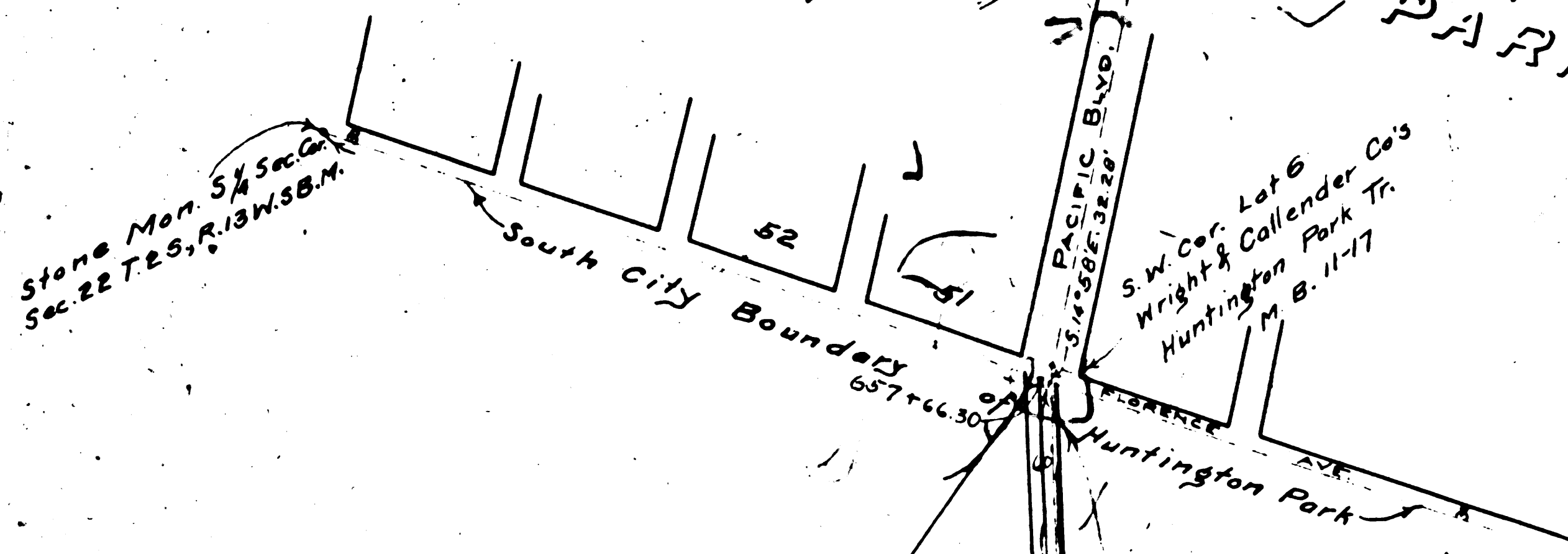
DIV. 15

FROM
South City Boundary of Huntington Park
to North City Boundary of Compton

Scale 1 inch = 500 Ft.

Co. 504 Map No 7681

CITY OF HUNTINGTON PARK



N 15° 09' 30\"/>

N 15° 09' 30\"/>

4409-157D17-77

F.M. 17681-4

A 3 OF A 3