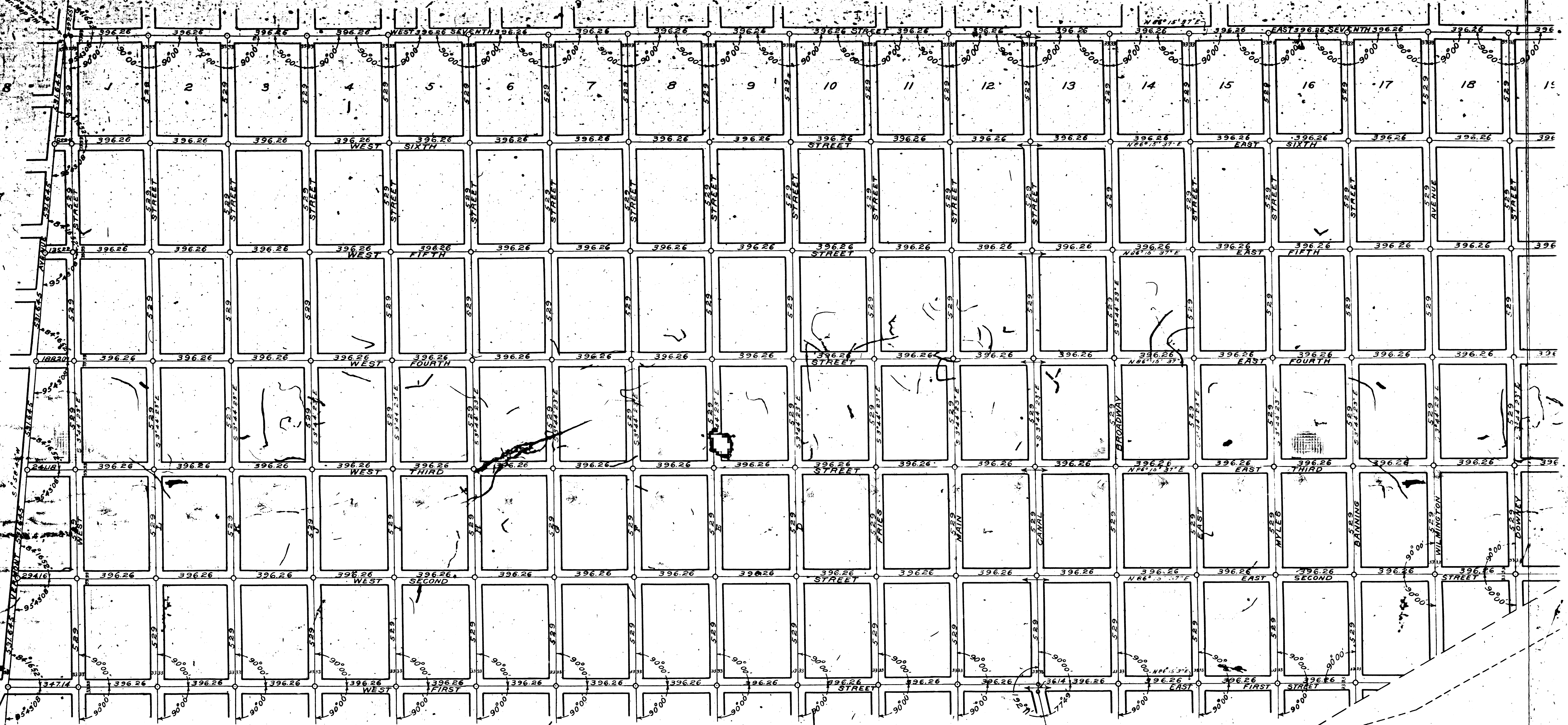


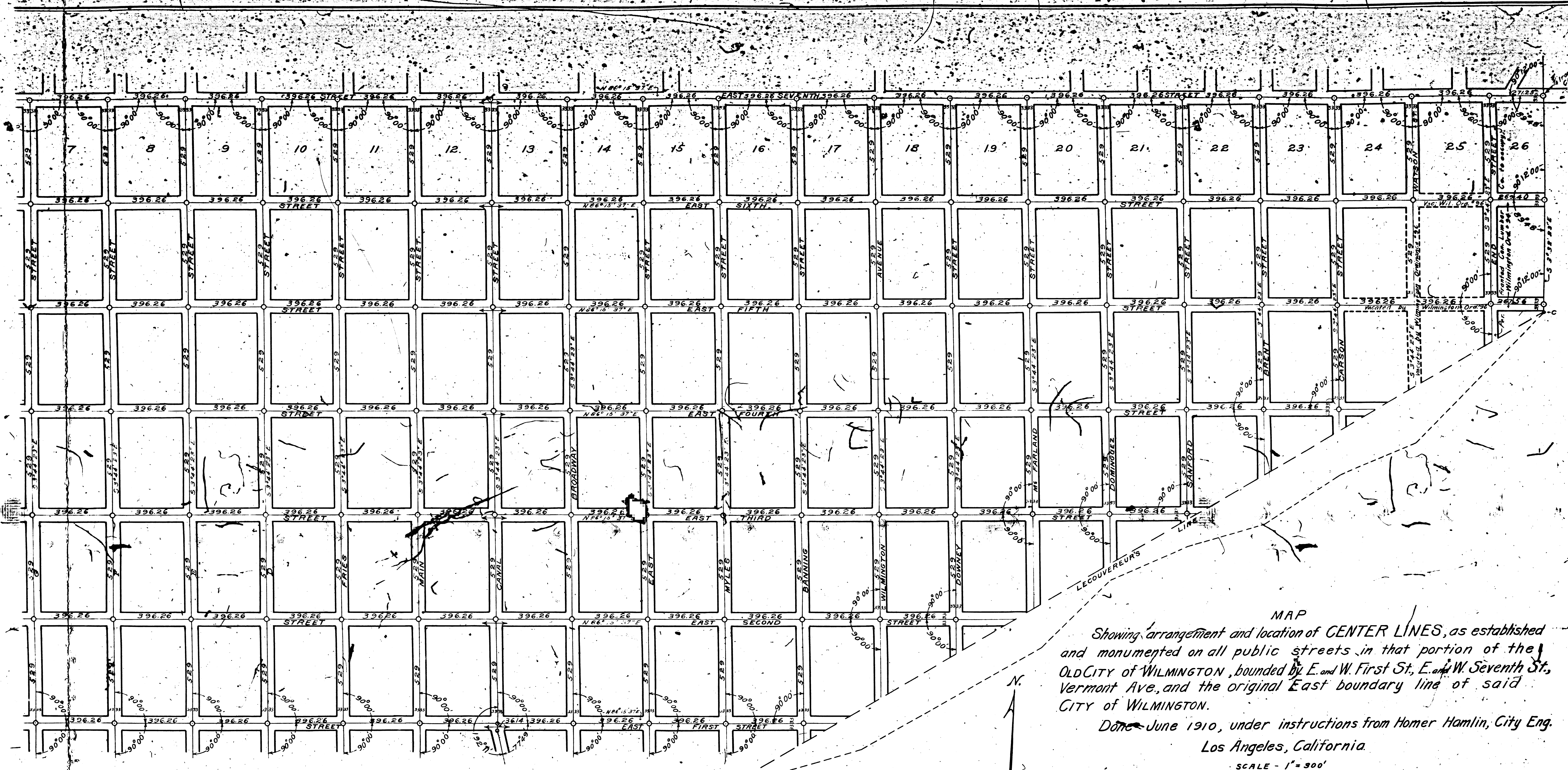
Range 8



Approved *[Signature]* 1910:  
*[Signature]*  
 City Engineer.

PM 17696

A11 OF A12



MAP  
 Showing arrangement and location of CENTER LINES, as established and monumented on all public streets in that portion of the Old City of WILMINGTON, bounded by E. and W. First St., E. and W. Seventh St., Vermont Ave., and the original East boundary line of said CITY of WILMINGTON.

Done June 1910, under instructions from Homer Hamlin, City Eng.  
 Los Angeles, California.

SCALE - 1" = 300'

Note: All Alleys omitted.  
 Parts of Canal St. and Broadway widened by Deeds to 80'.  
 Distances and Angles determined by precise measurements.  
 Center Line of East and West Seventh St. established as per County Surveyor's Map #7111.

Approved *[Signature]* 1910.  
*[Signature]*  
 City Engineer.

For change of street names see Ord. 38850  
 For dedic. publ. alleys sly from 5 St. betw Broad and Lakme Aves. } Ord. 38996  
 Canal " Broad " }  
 " " " " " Canal " Marine " }  
 " decl. publ. streets and alleys and naming streets. see Ord. 39053

FM 17696  
 A12 OF A12