

FM 17703
 A 2 OF A 10

STABLE

STABLE

HOTEL-COR

Papparo

Papparo with hedge

FOURTH

ST

$\Delta = 16^{\circ}07'15''$
 $R = 500'$
 $L = 140.68'$

E.C. 59+34.37

E.C. 54+15.05 = 54+15.97

E.C. 19+11.17 = 19+11.17

$\Delta = 20^{\circ}00'$
 $R = 500'$
 $L = 141.33'$

D-11-265 OR 5587-367

D-17-65 OR 562-140

D-17-25 OR 460-18

D-17-26 OR 562-150

D-11-267 OR 5587-379

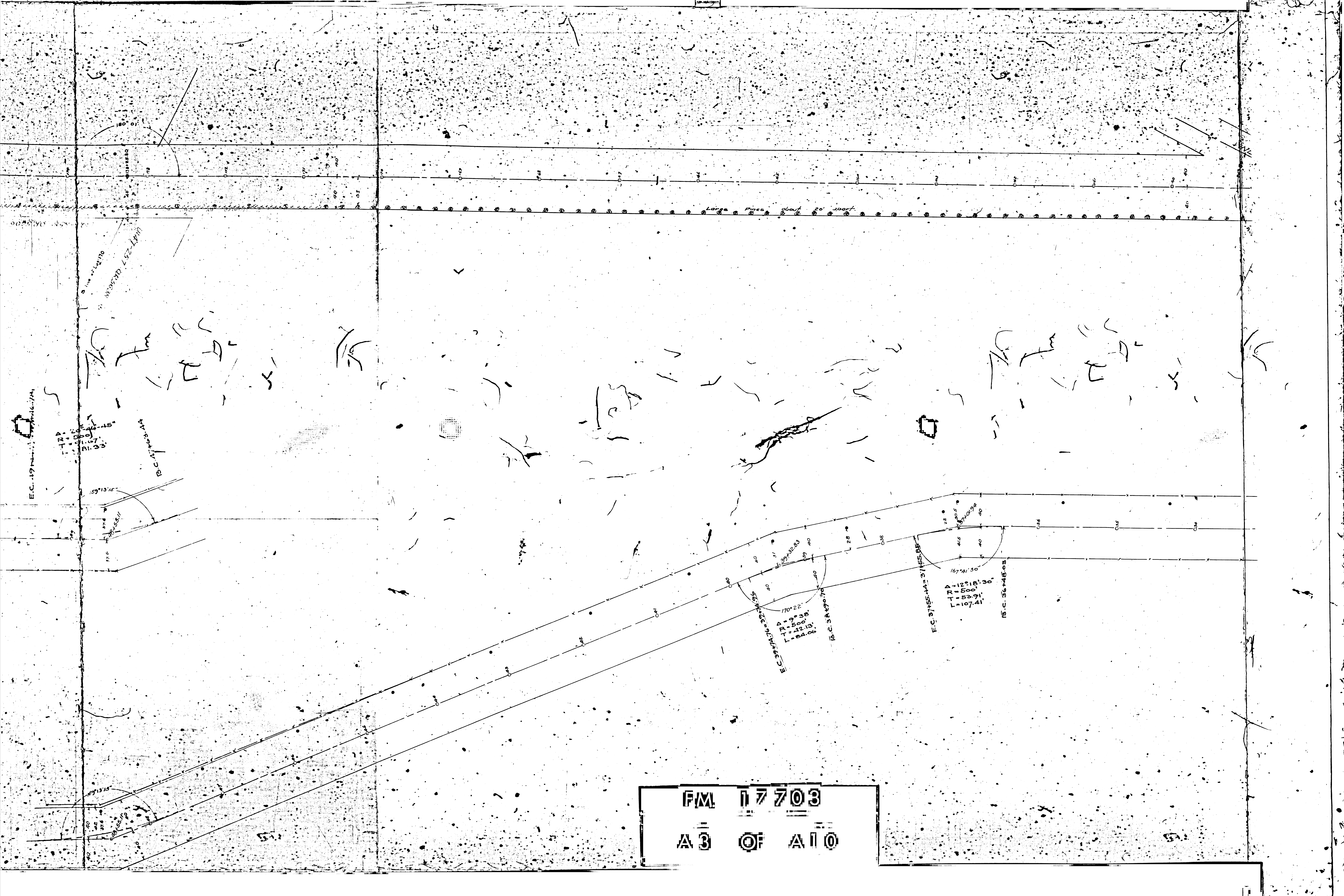
D-11-59 OR 1611-110

S

S

S

S



FM 17703
 A 3 OF A 10

VINELAND

ST.

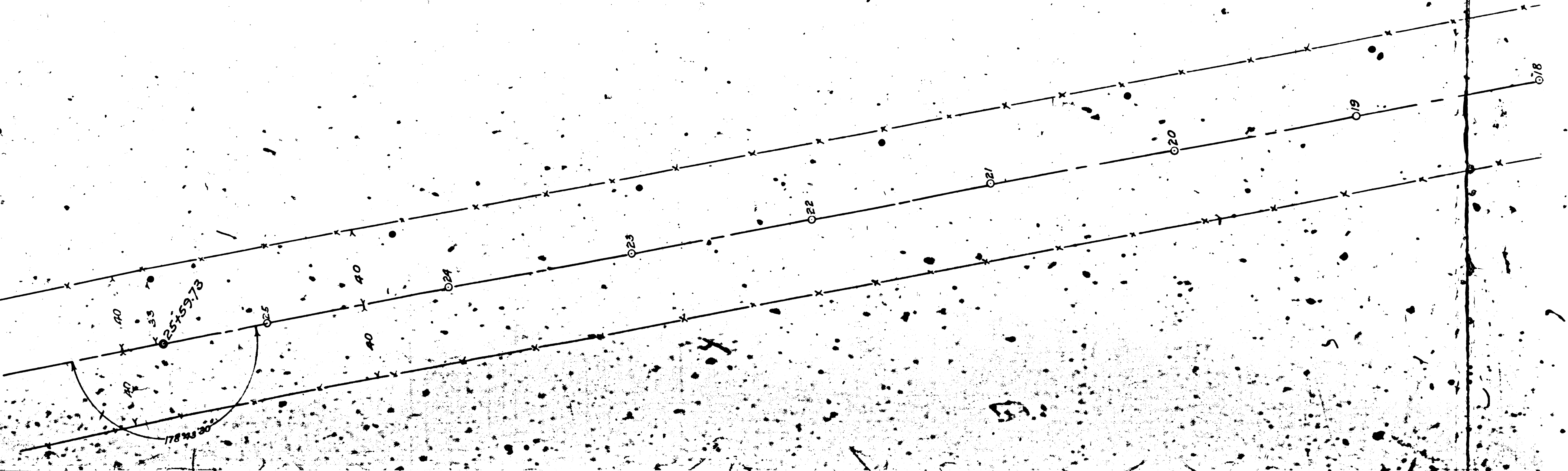
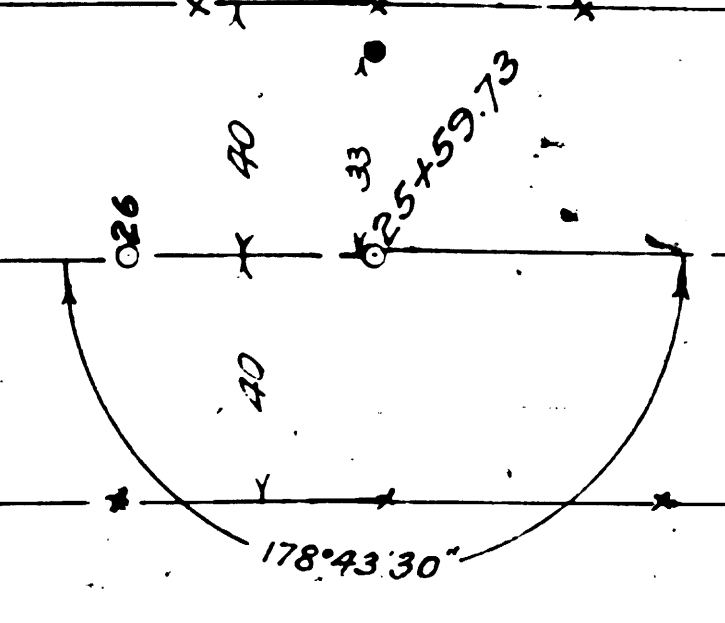
THIRD

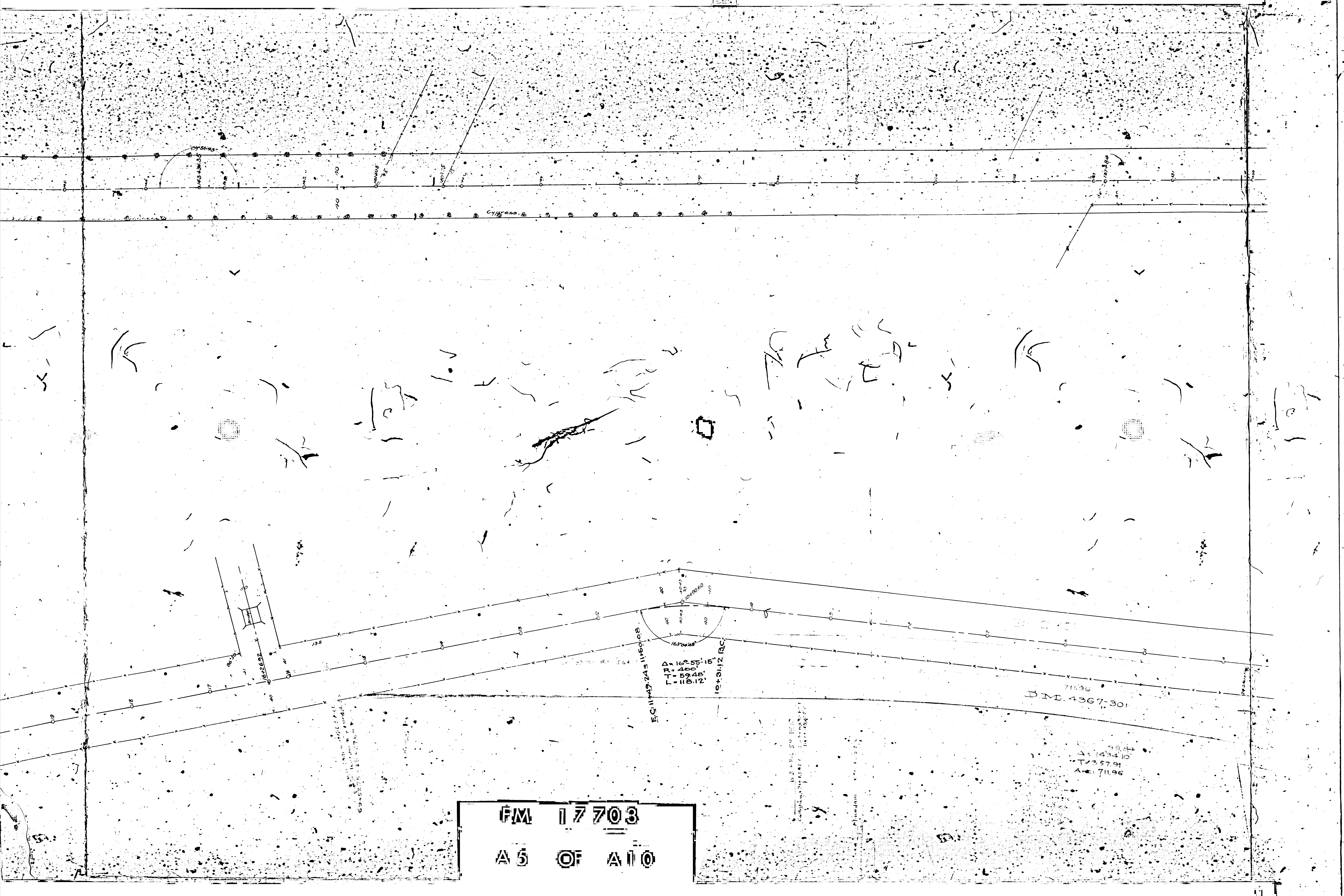
AVE.

Water Tank

Cypress trees with their...

FM 17703
 A4 OF A110





117°56'43"

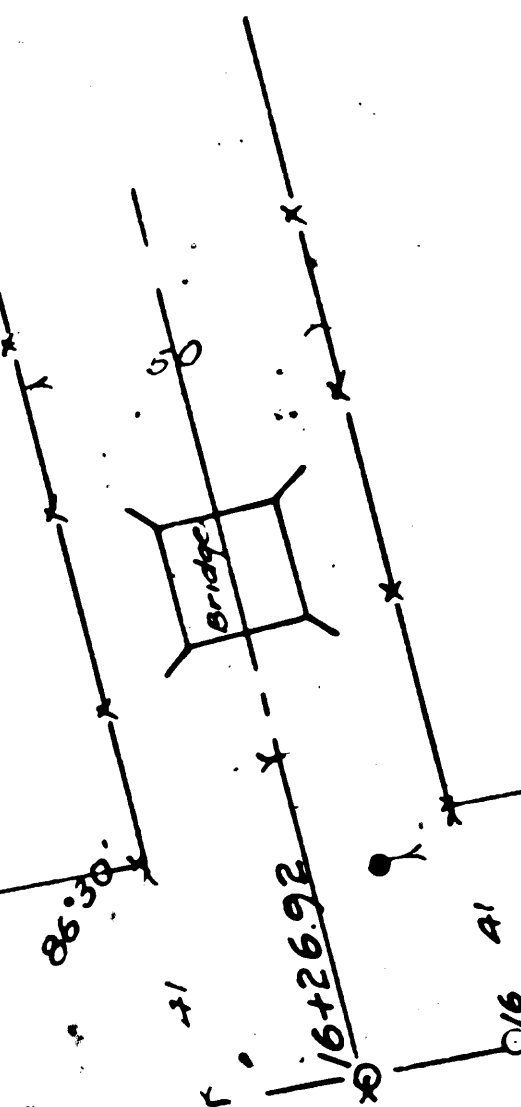
70

104°08'

100°15'

Cypress

104°48'



FC 1145.74 ± 1180.08

$\Delta = 16^{\circ}55'16''$
 $R = 400'$
 $T = 59.48'$
 $L = 118.12'$

10+31.12 RC

711.96
 D.M. 4367-301

99.84
 $\Delta = 143.410$
 $T = 357.91$
 $A = 711.96$

FM 17703
A5 OF A10

FLA ST

Large Pepper Trees

$\Delta = 17^{\circ}01'$
 $R = 500'$
 $Tan = 74.80'$
 $Arc = 143.50'$

$\Delta = 3^{\circ}39'$
 $R = 1000'$
 $Tan = 61.57'$
 $Arc = 63.70'$

$\Delta = 28^{\circ}40'$
 $R = 500'$
 $Tan = 127.76'$
 $Arc = 250.16'$

$\Delta = 28^{\circ}40'$
 $R = 500'$
 $Tan = 127.76'$
 $Arc = 250.16'$

$\Delta = 6^{\circ}30'30''$
 $R = 500'$
 $Tan = 26.43'$
 $Arc = 56.80'$

$\Delta = 18^{\circ}57'$
 $R = 450'$
 $Tan = 75.10'$
 $Arc = 148.83'$

$\Delta = 18^{\circ}57'$
 $R = 500'$
 $Tan = 33.45'$
 $Arc = 165.97'$

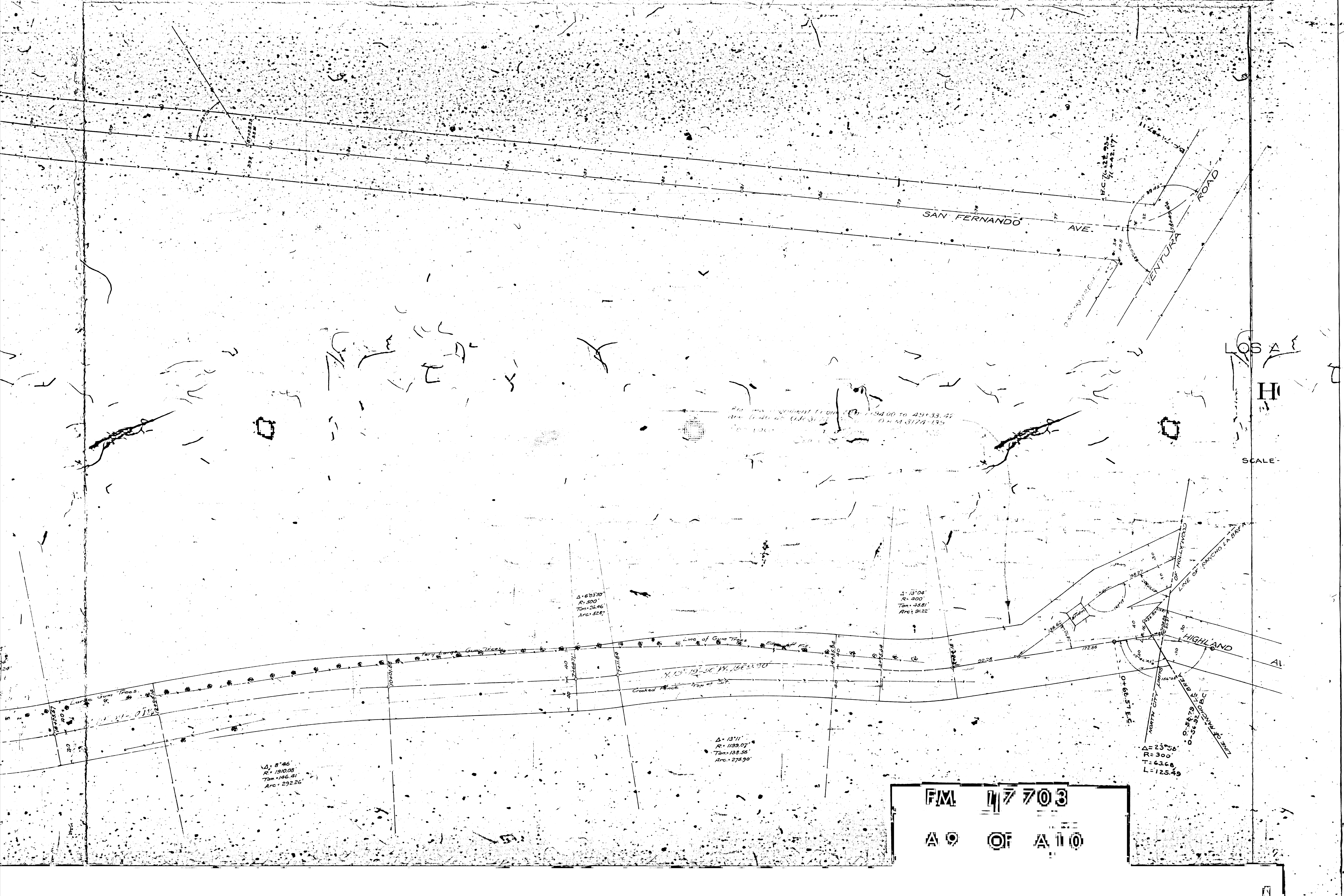
$\Delta = 10^{\circ}49'$
 $R = 204.38'$
 $Tan = 19.35'$
 $Arc = 38.58'$

$\Delta = 36^{\circ}04'$
 $R = 500'$
 $Tan = 162.78'$
 $Arc = 314.74'$

$\Delta = 36^{\circ}04'$
 $R = 300'$
 $Tan = 97.67'$
 $Arc = 188.82'$

F/M 17703

A 7 OF A 10



SAN FERNANDO AVE.

VENTURA ROAD

LOS ANGELES

SCALE

For the segment from station 19400 to 29133.22
 see L&A 3174-135 O.R.M. 3174-135

$\Delta = 67.320'$
 $R = 400'$
 $Tan = 23.46'$
 $Arc = 52.87'$

$\Delta = 13.04'$
 $R = 400'$
 $Tan = 75.81'$
 $Arc = 94.22'$

$\Delta = 8.46'$
 $R = 190.08'$
 $Tan = 146.41'$
 $Arc = 292.26'$

$\Delta = 13.11'$
 $R = 1139.07'$
 $Tan = 133.36'$
 $Arc = 275.90'$

$\Delta = 23.56'$
 $R = 300'$
 $T = 63.68'$
 $L = 125.49'$

FM 17703
 A 9 OF A 10

$N 13^{\circ} 19' 50'' W 156.90'$

Crooked Fence Top of 54'

Line of Gum Trees

HIGHLAND

LINE OF RANCHO LA BREA

LINE OF RANCHO LA BREA

LINE OF RANCHO LA BREA

LINE OF RANCHO LA BREA

LINE OF RANCHO LA BREA

LINE OF RANCHO LA BREA

LINE OF RANCHO LA BREA

LINE OF RANCHO LA BREA

LINE OF RANCHO LA BREA

S.V. 10

SAN FERNANDO AVE.

VENTURA ROAD

LOS ANGELES COUNTY HIGHWAY COMMISSION
 DIVISION 3
HOLLYWOOD - TOLUCA ROAD
 FROM NORTH CITY LIMITS OF HOLLYWOOD TO
 S.P.R.R. AT TOLUCA

SURVEYED OCT. & NOV. 1909.

SCALE - 1" = 50'

FIELD WORK BY WOS.
 C.G.R.
 OFFICE C.N.V.

FILE NO A-298

See C.S. 7739

$\Delta = 60.330^\circ$
 $R = 300'$
 $Tan = 20.46'$
 $Arc = 52.4'$

$\Delta = 71.02^\circ$
 $R = 300'$
 $Tan = 25.81'$
 $Arc = 91.22'$

$\Delta = 13.11^\circ$
 $R = 1139.07'$
 $Tan = 138.56'$
 $Arc = 276.90'$

$\Delta = 23.56^\circ$
 $R = 300'$
 $T = 63.68'$
 $L = 125.49'$

FM 17703
A 110 OF A 110

