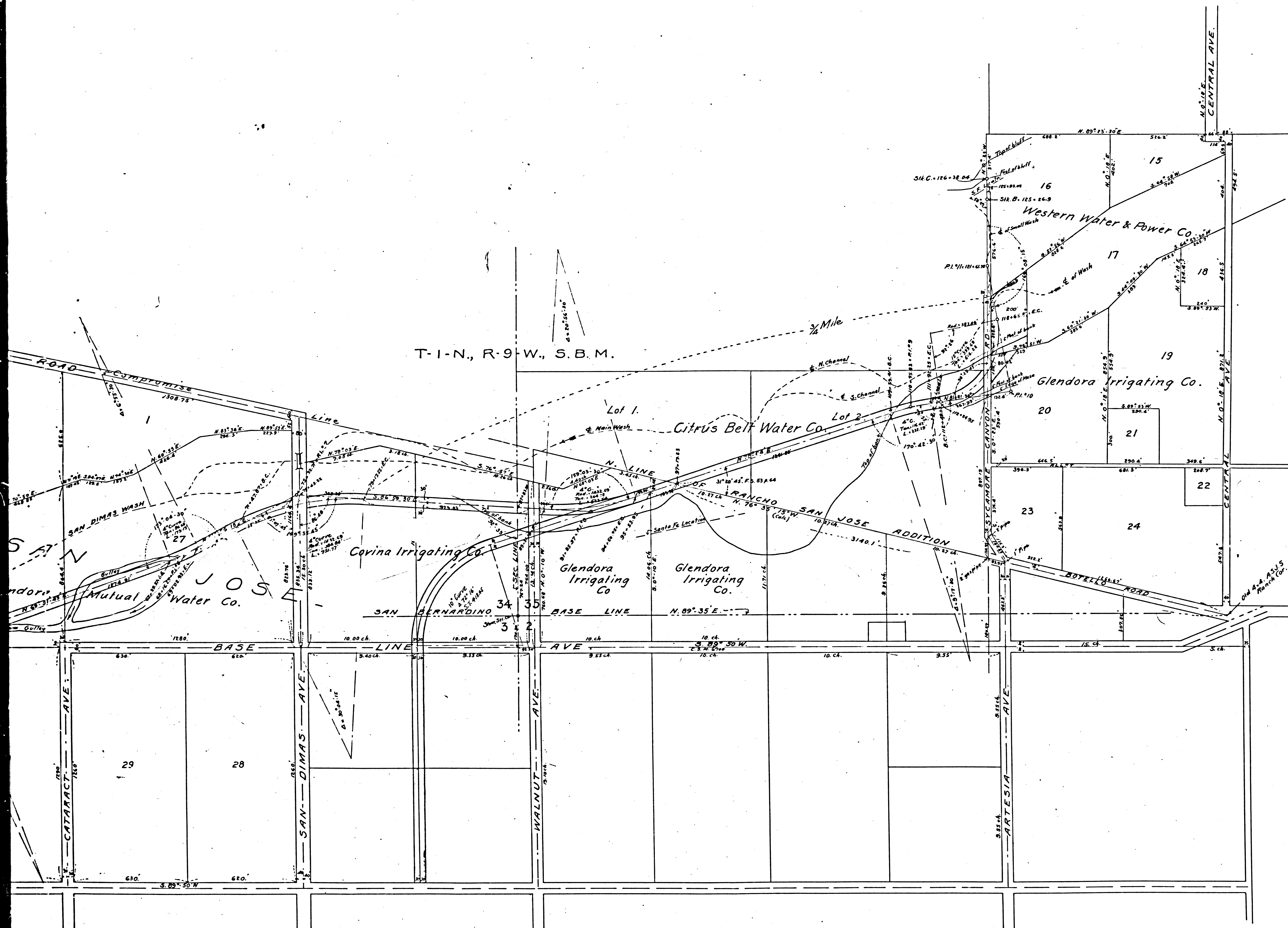


T-1-N., R-9-W., S.B.M.

F.M.	17712-2
A1	OF A2



Traced from Blue Print of
 L.A. COUNTY HIGHWAY COMMISSION
 MAP OF
 PROPOSED SPUR
 FROM
 A.T. & S.F. Ry., MAIN LINE,
 TO
 SAN DIMAS QUARRY.

Sept. 11th 1909

Scale - 300' = 1"

A.E. LODER, Chief Engr.

F.-B. N° 53

C.S. No. 7614
 (FM 17614)

(Traced, Oct. 14-1910)

F.M. 17712-2
 A 2 OF A 2