

Lot 4  
Pauline Kirs  
92.00 AC.  
112 Ave.  
9086

Lot 5 Estate  
92.00 AC.  
112 Ave.  
9086

Lot 6  
Emile Brodtbeck  
44.00 AC.

Lot 3  
Charles Weir  
41.00 AC.

15.00 AC.  
Arelas N. Tomie

RANCHO  
MISCELLANEOUS RECORDS, 4-851

CANADA

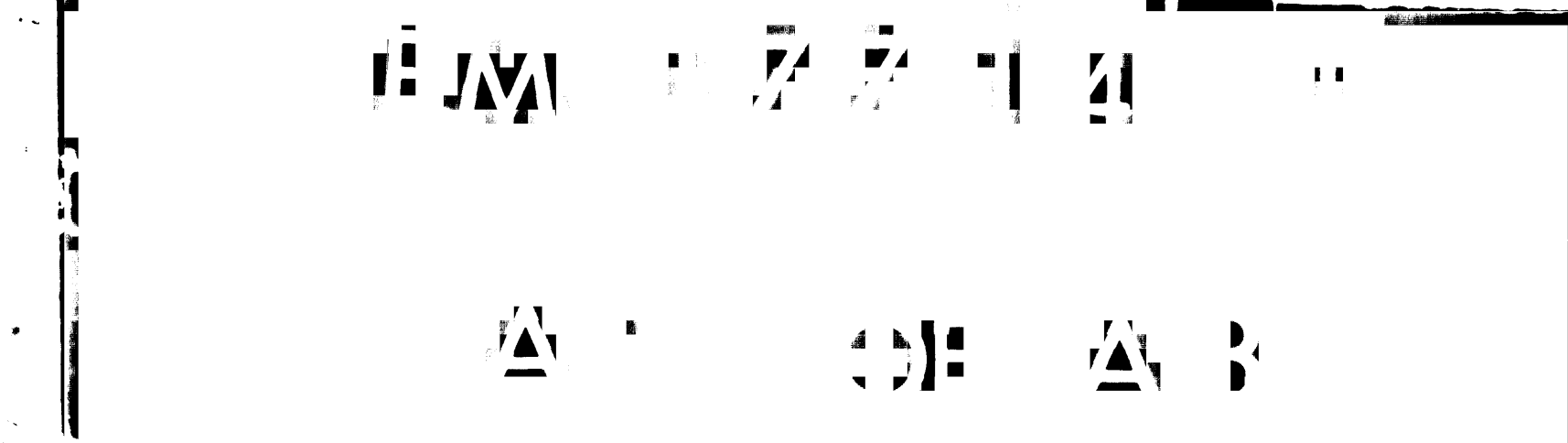
WATTS

MICHIGAN

OF

LA

SUBDIVISIONS



CANADA

For NEW Location see H-30-3&4

PORTION OF THE

RANCHO

SAN

SEE MARGINAL MAP

Lot 2  
Pasadena L.V.L. & Water Co.  
44.69 AC.

13.67 AC

SEE SHEET No. 2

PASQUAL

MR. 42-71

MAP No. 2

DEVIL'S GATE BRIDGE

SUBDIVISION

OF PART OF

RANCHO

SAN

RAFAEL

LOT 93

Charles E. Pendall  
20016 AC

Conrad Verdugo Engineer License 11-53110, B.S. 1914

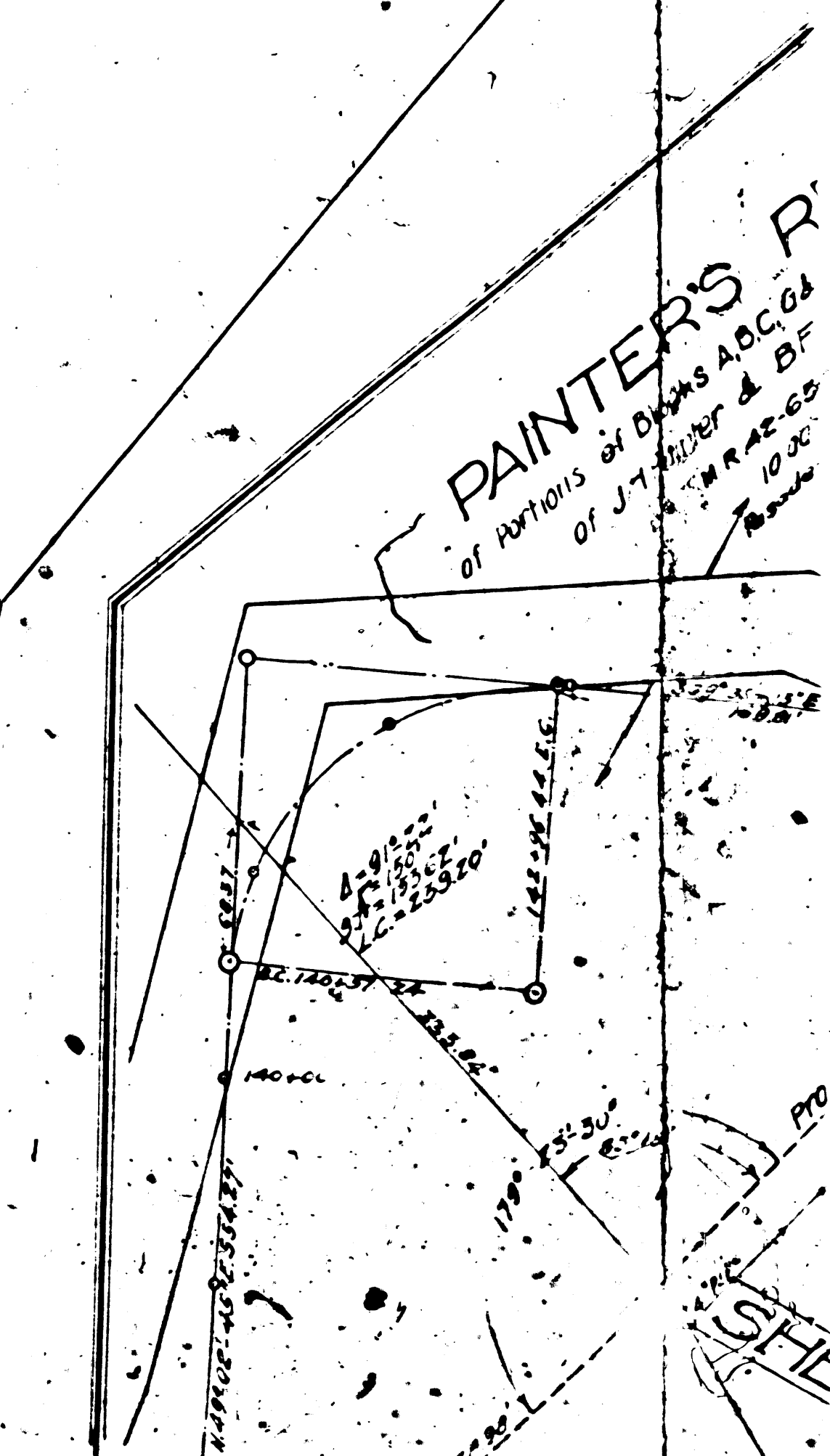
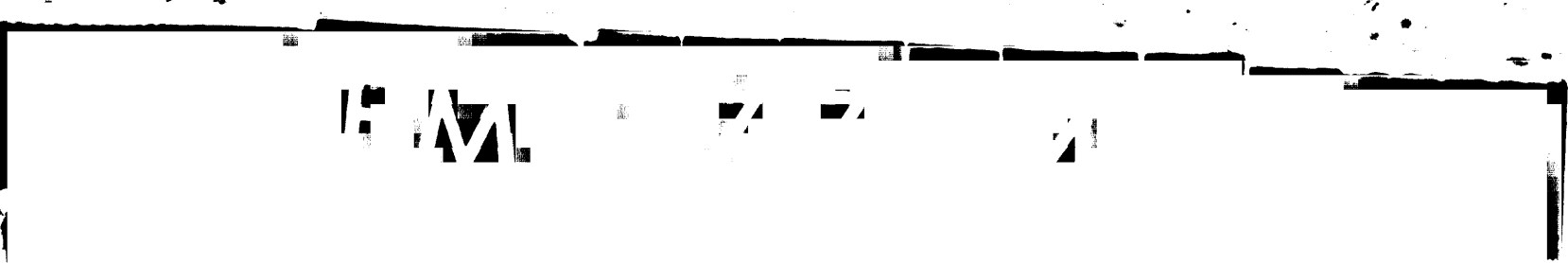
A.R.S. 318 4301

PAINTER'S R.  
of PARTS of D.W.S. A.B.C. Co.  
of J.T. ...

WATTS

15.00 AC  
Aretas N. Torre

DEEDS 1481 AS  
1481 AS  
Pasadena L.V.L. & Water Co.



PORTION OF THE

RANCHO SAN

RANCHO SAN

PASQUAL

SEE SHEET No. 2

SEE MARGINAL MAP

For easement for flooding rights, see in 27-228, D. 6129-31 and L.S. 3106 sheet 5 (Discarded) See M.S. 26-24-33

LOS ANGELES COUNTY HIGHWAY COMMISSION  
LA CANADA VERDUGO ROAD  
DIVISION 39

Right of Way Map from Atlanta Street to Michigan Ave.  
Scale, 1"=100'  
P.H.A.  
Feb. 1911.

A-301  
C.S. 771A

No. 2

RANCHO SAN

RAFAEL  
A.R.S. 318 & 319

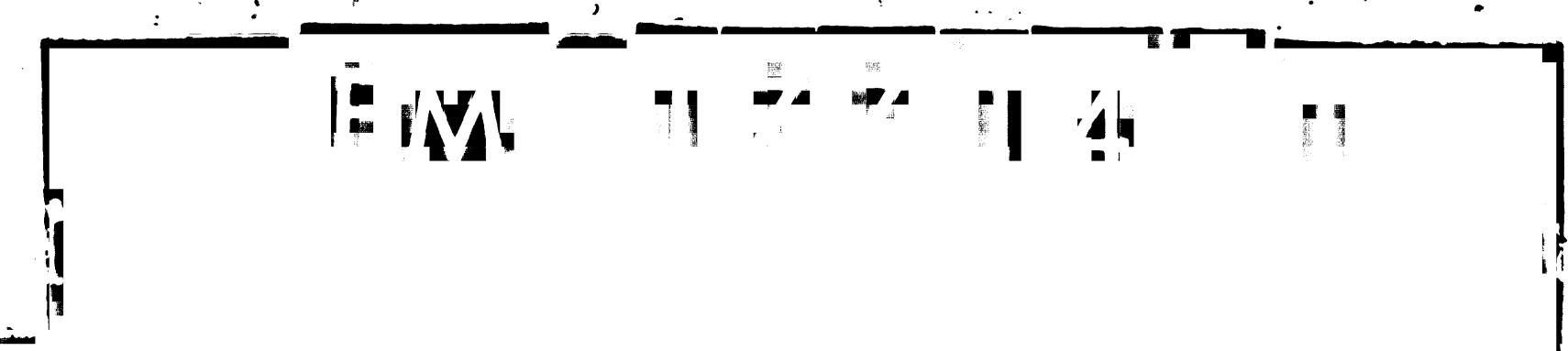
MARGINAL MAP  
Scale, 1"=800'

PAINTER'S REPLAT  
of Portions of Blocks A.D.C. 6411 of Subdivided Lands  
of J. Painter & B.F. Bell  
M.R. 42-25  
7-10-2008  
Replatman: E.V. L. Miller, C.  
A.S. 318-320  
3-1-1911  
L.S. 318-319

MASSACHUSETTS VISTA TRACT  
M.B. 12-112

WINDSOR AVE

SHeldon



100 200 300 400