

ONTARIO AND SAN ANTONIO
 HEIGHTS RAILROAD
 THROUGH
 THE CITY OF POMONA
 SCALE: 1" = 200 FT. LOS ANGELES CALIF. 3-10
 Chief Engineer

Ontario and San Antonio Heights R.R. Co. deeded all of its railroad and property in California to the Pac. Elect. Ry. Co. by D. 1882-57

1M49

SYCAMORE
 ABANDONED

SIDNEY SORBY TRACT

H. B. Davis J. C. F. Cummins

F.M. 17715

A1 OF A4

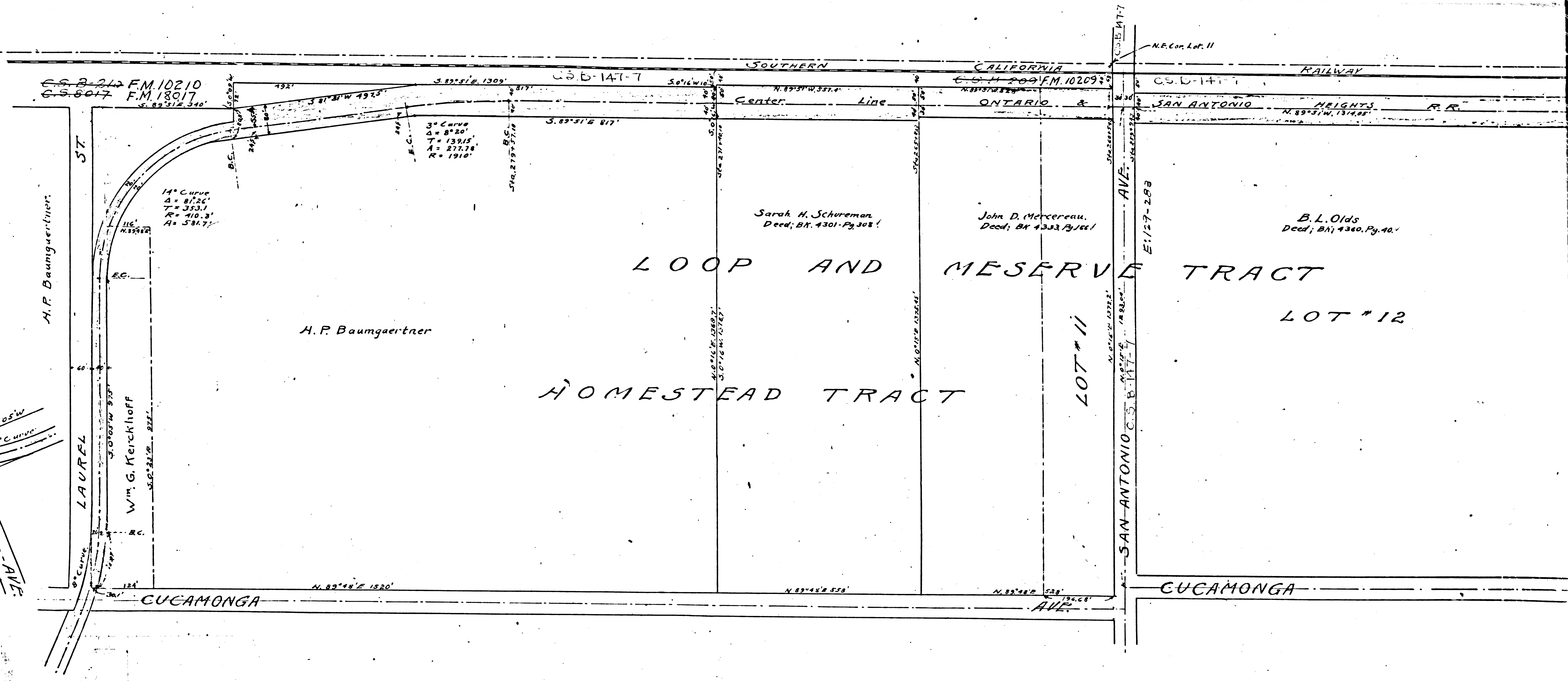
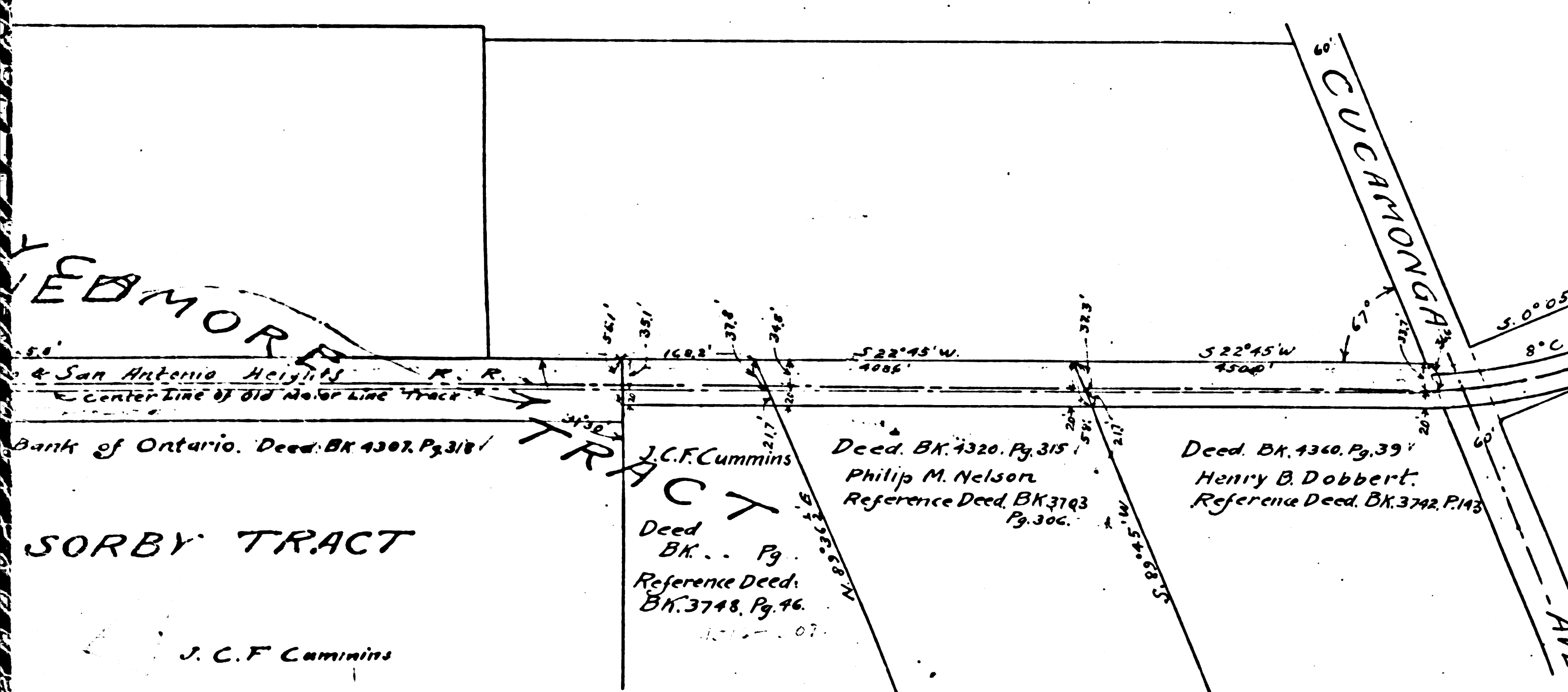
ONTARIO AND SAN ANTONIO
HEIGHTS RAILROAD
THROUGH
THE CITY OF POMONA

SCALE: 1" = 200 FT. LOS ANGELES CALIF. 3-10

Chief Engineer

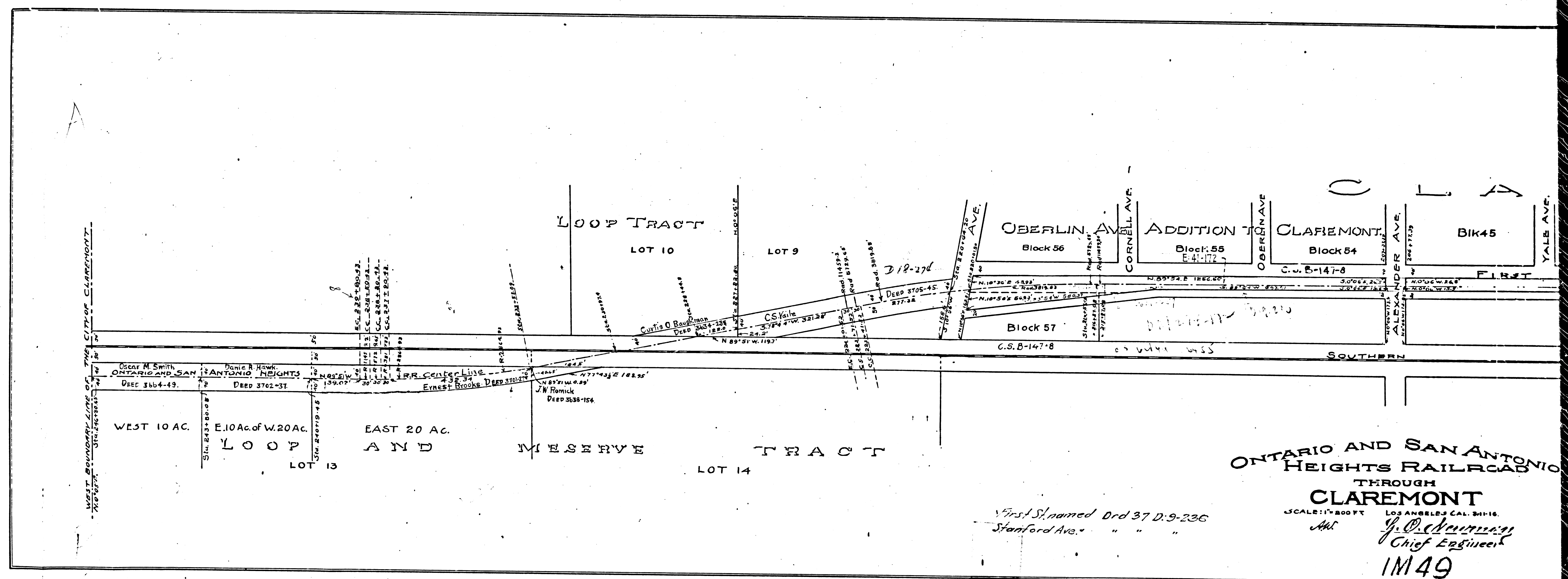
San Antonio Heights R.R. Co. ceded all of its railroad and
in California to the Pac. Elect. Ry. Co. by D. 1882-57

1M49



F.M. 17715
A2 OF A4

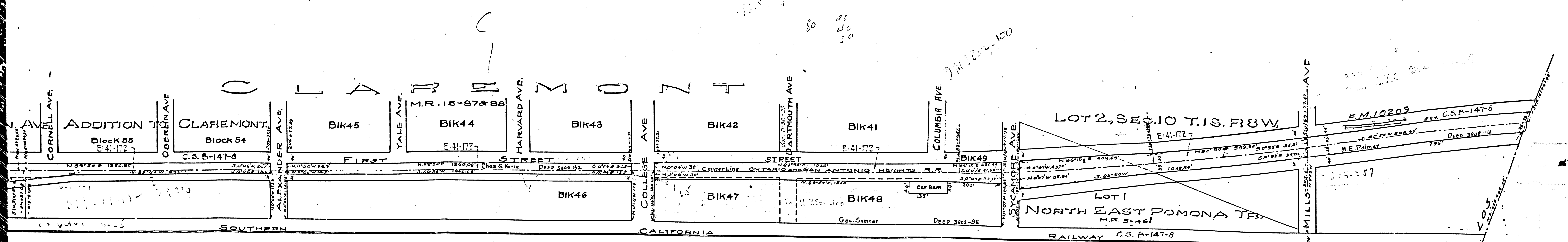
RAILWAY
 HEIGHTS R.R.
 B.L. Ows
 Deed, Bk, 4440, Pg. 14
 ACT
 LOT # 12
 EAST BOUNDARY LINE OF THE CITY OF POMONA
 WEST



ONTARIO AND SAN ANTONIO
 HEIGHTS RAILROAD
 THROUGH
 CLAREMONT
 SCALE: 1" = 200 FT. LOS ANGELES CAL. 8-16.
 J. O. Anthony
 Chief Engineer
 1M49

First St. named Drd 37 D. 9-236
 Stanford Ave. " " "

F.M. 17715
 A3 OF A4



ONTARIO AND SAN ANTONIO
HEIGHTS RAILROAD
THROUGH
CLAREMONT

SCALE: 1" = 800 FT
LOS ANGELES CAL. 311-10.
J. P. Ockerman
Chief Engineer

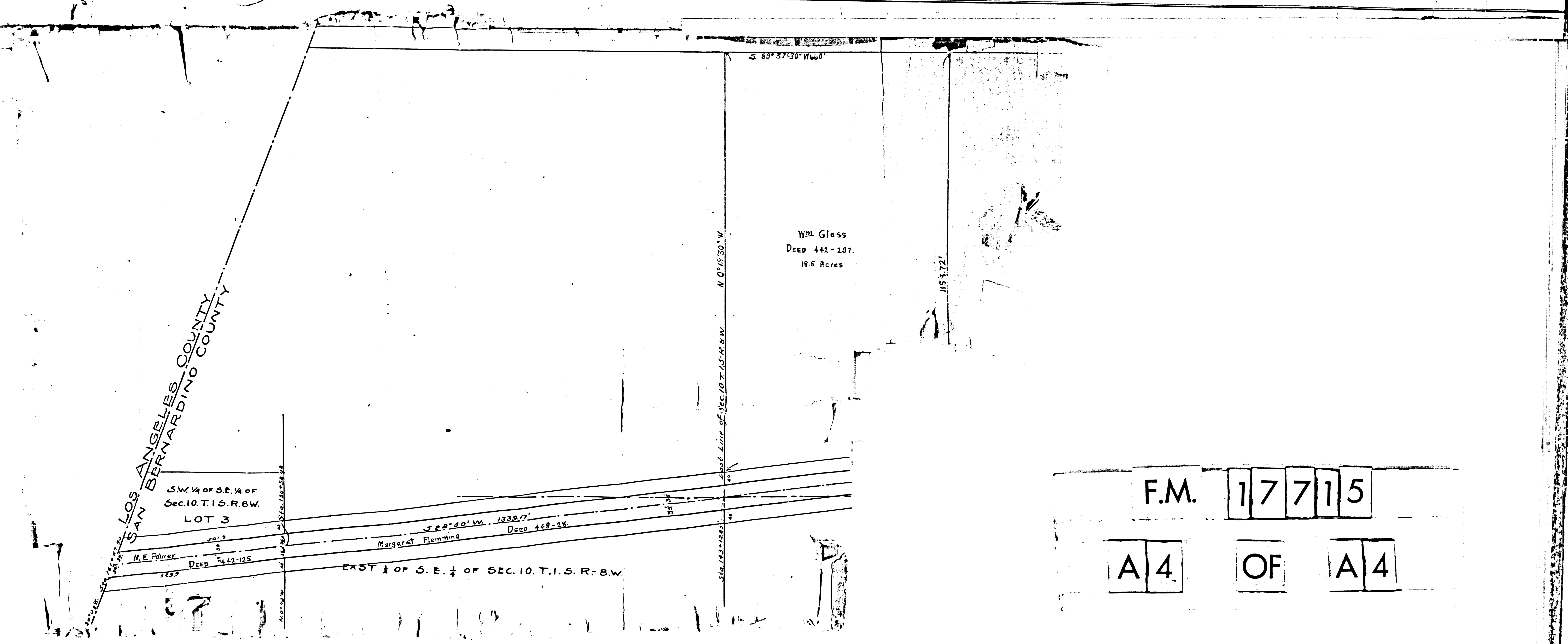
IM 49

Handwritten notes and calculations:

50
40
30

500
135
365

See page 2
1/2 of 227
227
227
227



F.M. 17715
A4 OF A4