

LOS ANGELES DOCK & TERMINAL CO.
 Map showing boundary lines of property in the western part of the city of
 Long Beach, California.

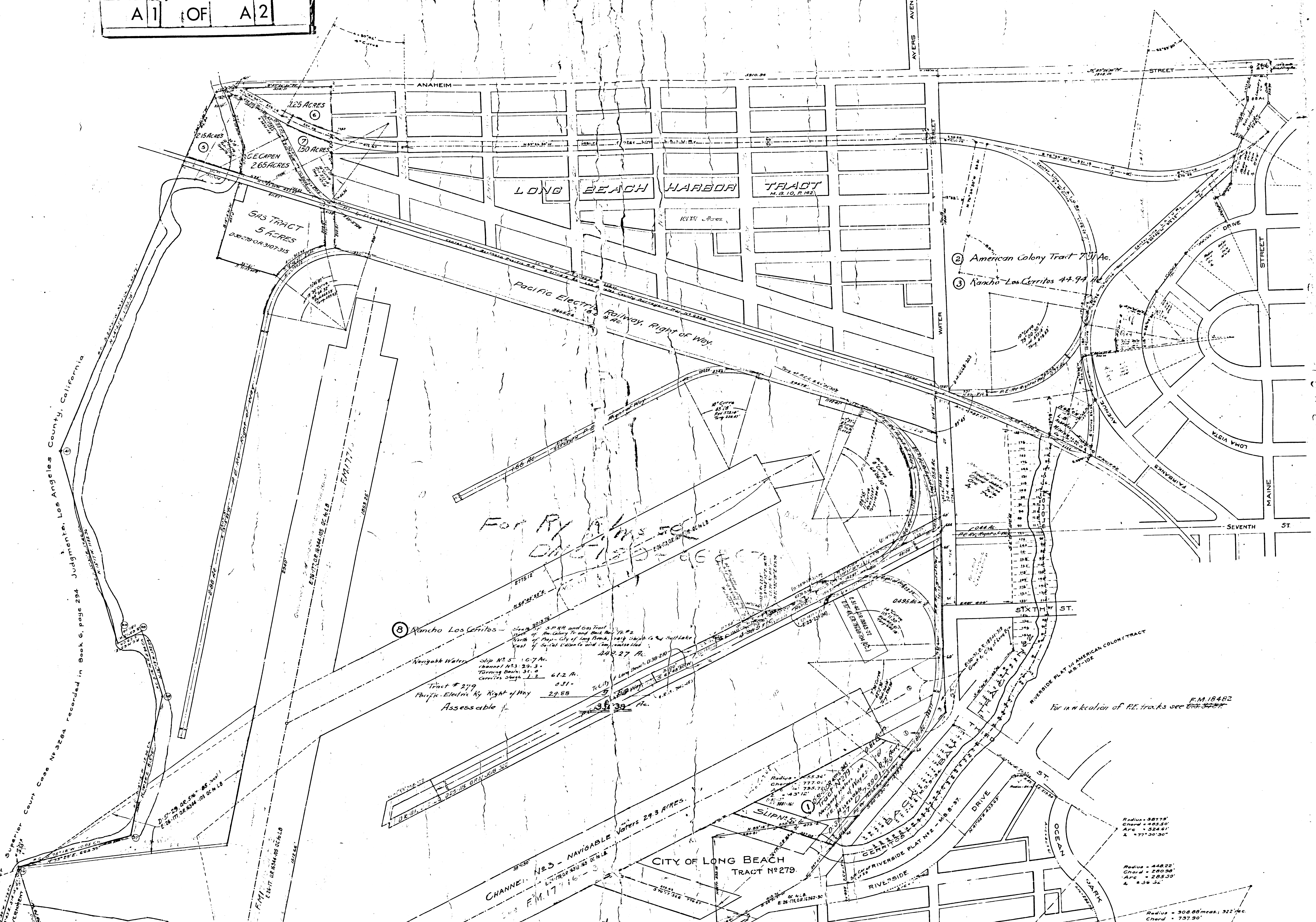
October, 1904

ASSESSMENT-MAP
 MARCH, 1911

IM30

F.M. 17716-1
 A 1 OF A 2

Scale 200 feet = 1 inch



Superior Court Case No. 3264, recorded in Book 6, page 294 Judgments, Los Angeles County, California

⑧ Rancho Los Cerritos - Slip #2 1.07 Ac.
 Channel #23 29.3 Ac.
 Turning Basin #1 0.81 Ac.
 Cerritos Slough #2 0.81 Ac.
 Tract # 279 Pacific Electric Ry Right of Way 22.88 Ac.
 Assessable 34.39 Ac.

② American Colony Tract 7.51 Ac.
 ③ Rancho Los Cerritos 44.94 Ac.

CITY OF LONG BEACH
 TRACT No 279

Radius = 38775'
 Chord = 489.50'
 Arc = 1.02461°
 Δ = 477°30'30"

Radius = 44825'
 Chord = 280.90'
 Arc = 285.50'
 Δ = 8.36 32"

Radius = 308.00 meads; 322' Ac.
 Chord = 757.90'
 Arc = 75.9 89'
 Δ = 47.54'

Supervisor Court Case No 2284 recorded in Book 6, page 294 Judgment Los Angeles County, California

For A2 of 17716-1

8 Rancho Los Cerritos
Navigable Water
Tract F 279
Pacific Electric Ry Right of Way
Accessible

For new location of R.R. tracks see F.M. 16482

Radius = 387.75'
Chord = 488.50'
Arc = 524.61'
A = 77°30'30"

Radius = 448.22'
Chord = 280.99'
Arc = 285.80'
A = 36°32'

Radius = 306.88' mens., 322' arc
Chord = 759.83'
Arc = 759.83'
A = 47°54'

F.M. 17716-1
A2 OF A2

For Water St changed to Pine Ave. D: 25-170 O-J B-422
Third St. • Fourth St. 21-21-130 • 215
Main St. • Ocean Ave. D: 18-130 • 719
Ocean Ave. • Ocean Boulevard D: 25-172 O-J B-422
Ocean Ave. • Ocean Boulevard D: 25-172 O-J B-422
Northern & Western • Arroyo • Riverside Drive • Orange Drive West D: 25-172 O-J B-422
Southern & Eastern • El Dorado St. D: 25-172 O-J B-422
Tulare • Tulare • Tulare Place • Tulare Place
For River Channel see S. 879 and C. S. 3490

