

12336
DOWNEY DEPOT GROUNDS

LOS ANGELES COUNTY HIGHWAY COMMISSION

19 SEC 1

WINNEY, NORWALK & ORANGE COUNTY LINE ROAD

100' E OF CRAWFORD ST. - DOWNEY TO STA 359+54.20

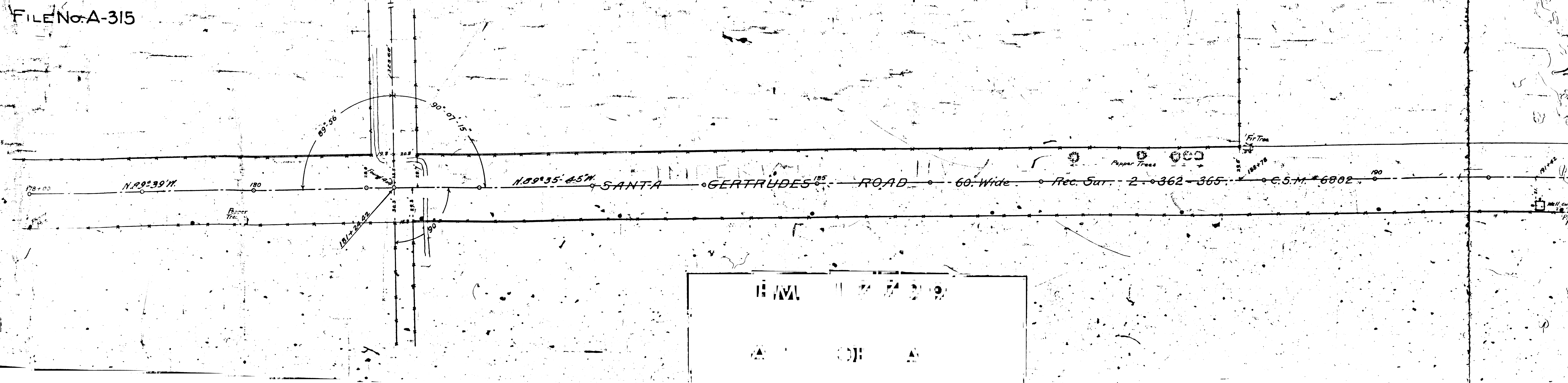
Approved by D.W.J. Nov. 1931
Platted by J.D.M. April 1910
Revised by J.D.M. May 1910

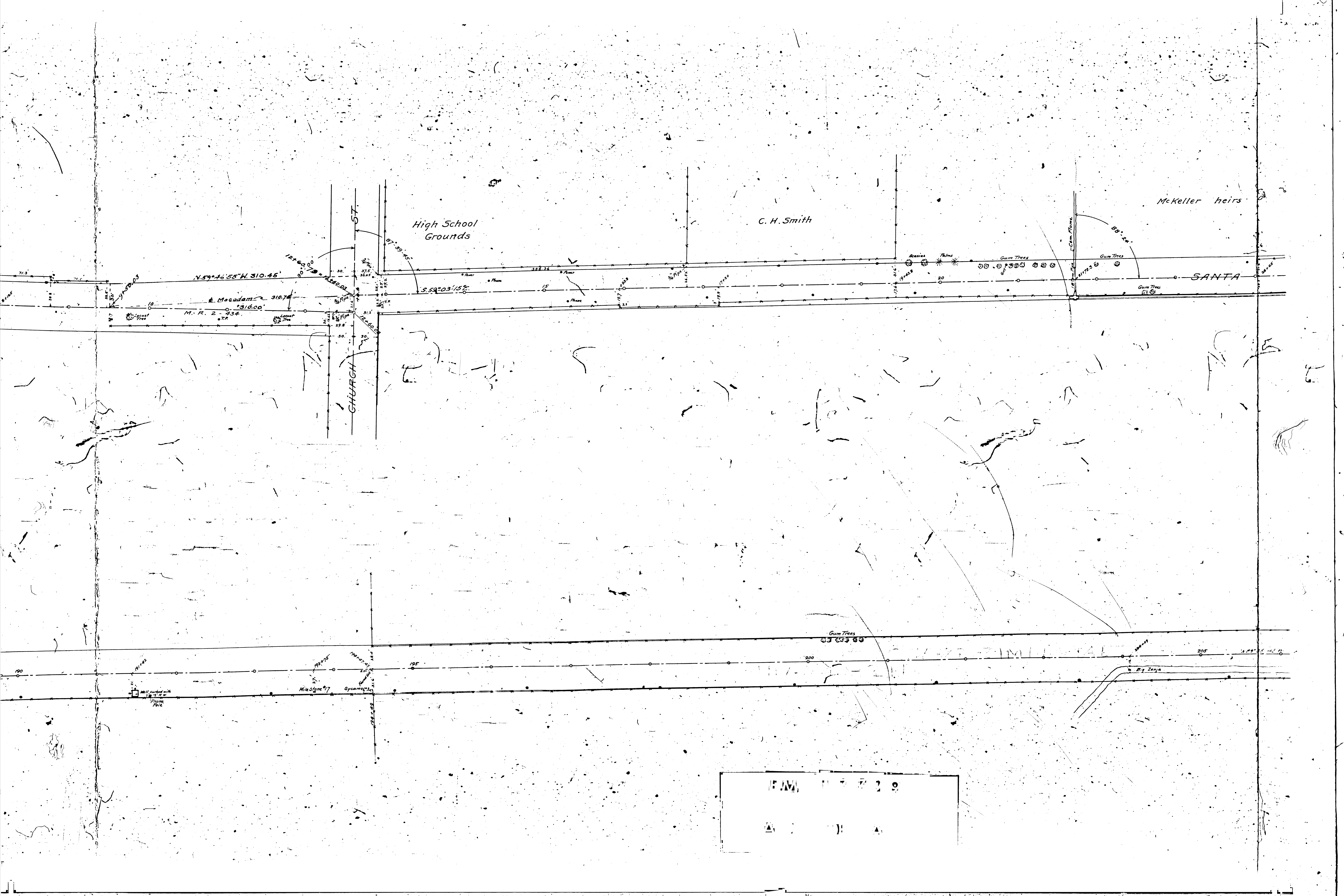
Approved AUG. 18 1912

C.N. Smith
Asst. Chief Engineer

Scale: 1"=50'

FILE No. A-315





N. 59° 46' 55" W. 310.45'

E. Macadam 310.74'

M. R. 2 - 934

High School Grounds

C. H. Smith

McKeller heirs

SANTA

CHURCH ST

127° 00' 00" = 1282.03'

97° 39' 45"

S. 53° 03' 15" E.

88° 24'

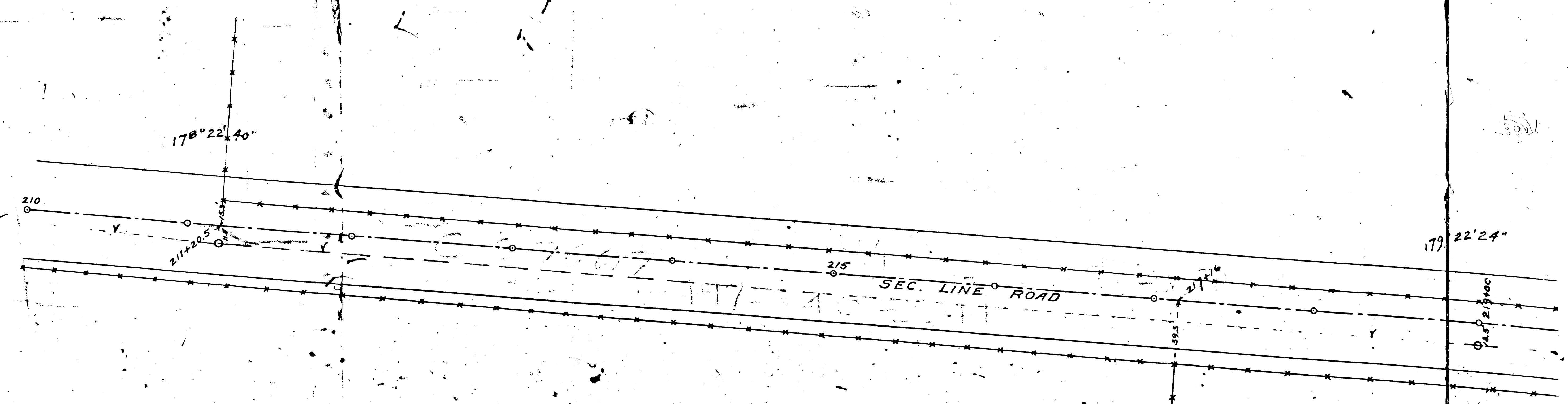
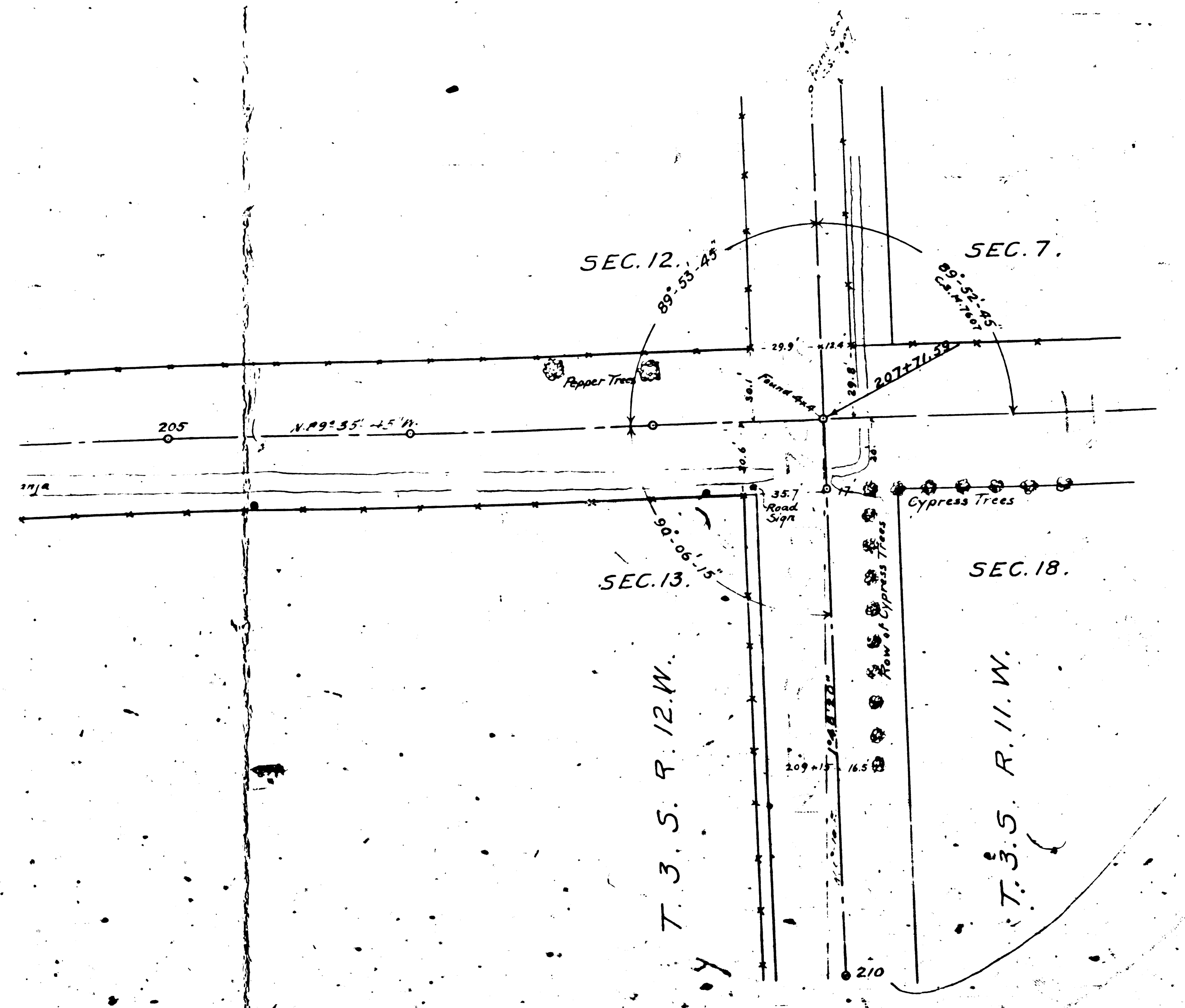
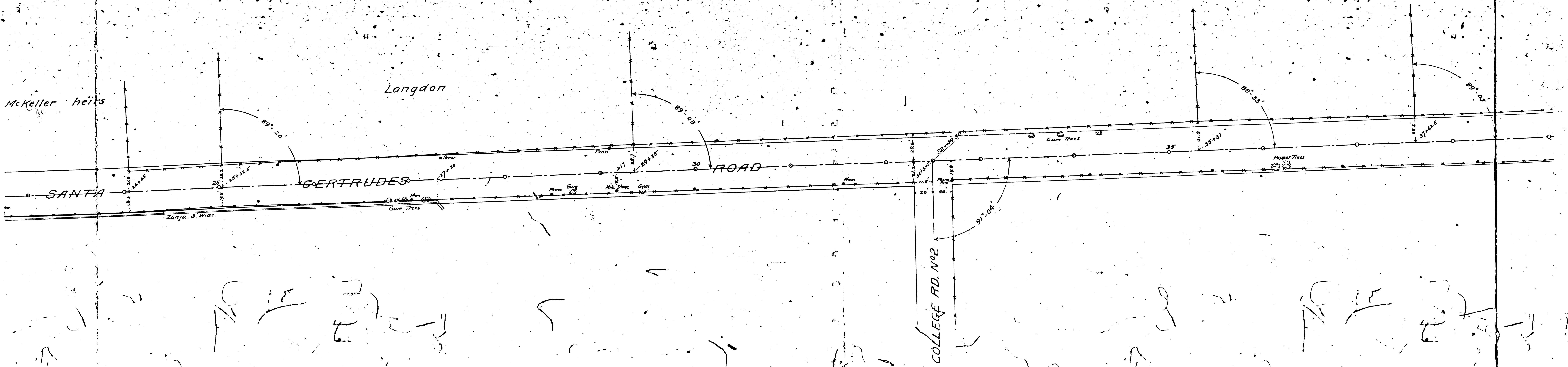
Gum Trees

Big Zanja

FWM 11 7 7 2 0
▲ : : ▲

McKeller heirs

Langdon



T. 3. S. R. 12. W.
 T. 3. S. R. 11. W.
 T. 3. S. R. 11. W.
 T. 3. S. R. 12. W.

J. E. Jennison

FIRESTONE

Paper Trees

Green Trees

17) 22' 24"

219

220

221

222

223

224

225

10° 14' 00" E

0° 26' 32"

228+73.07

122° 59' (Rec)

23° 35' 36"

Road 40' Wide
D: 2625.103

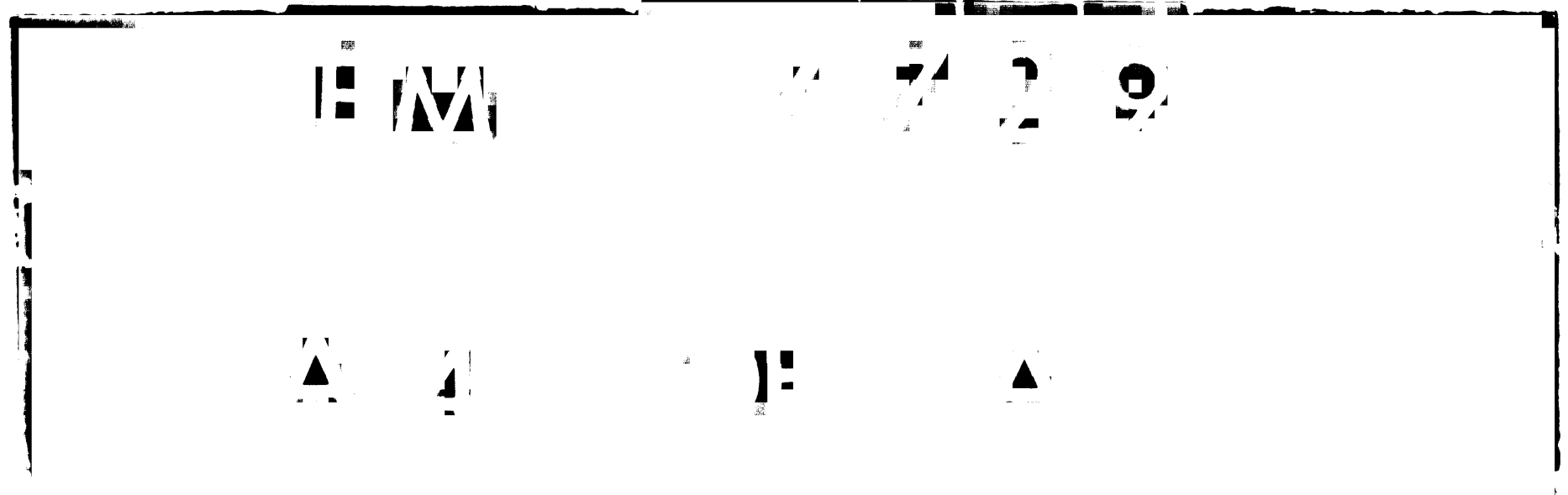
231+67.7

47° 44'

150

D: 5' 293

RANCHO SANTA GERTRUDES
RANCHO LOS COYOTES

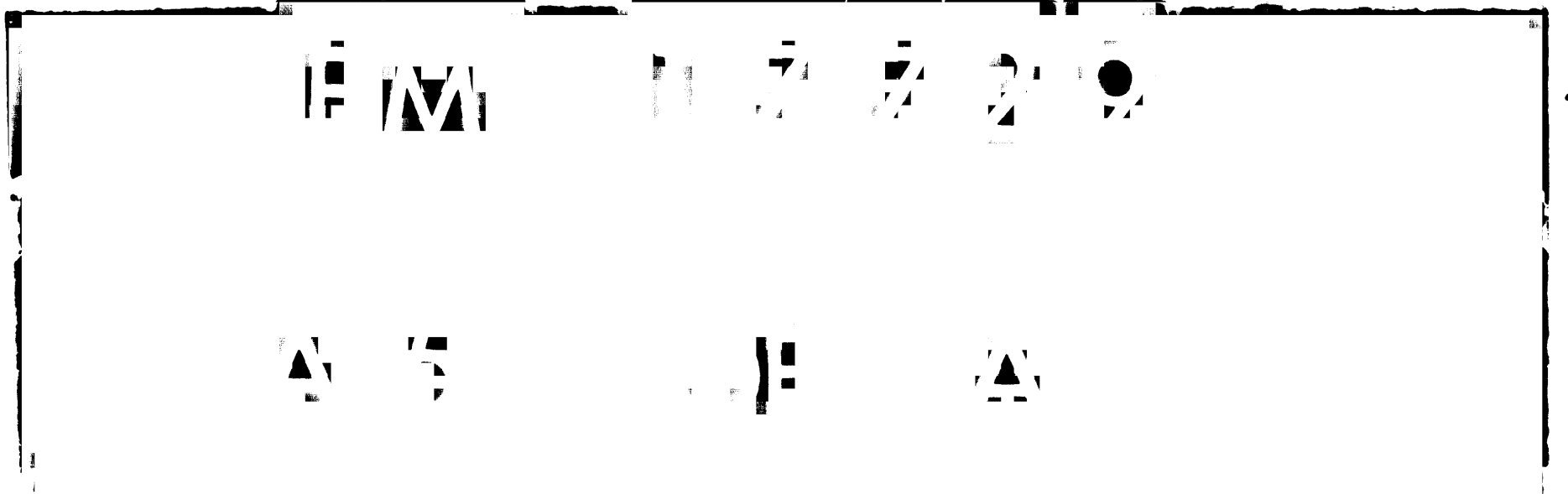


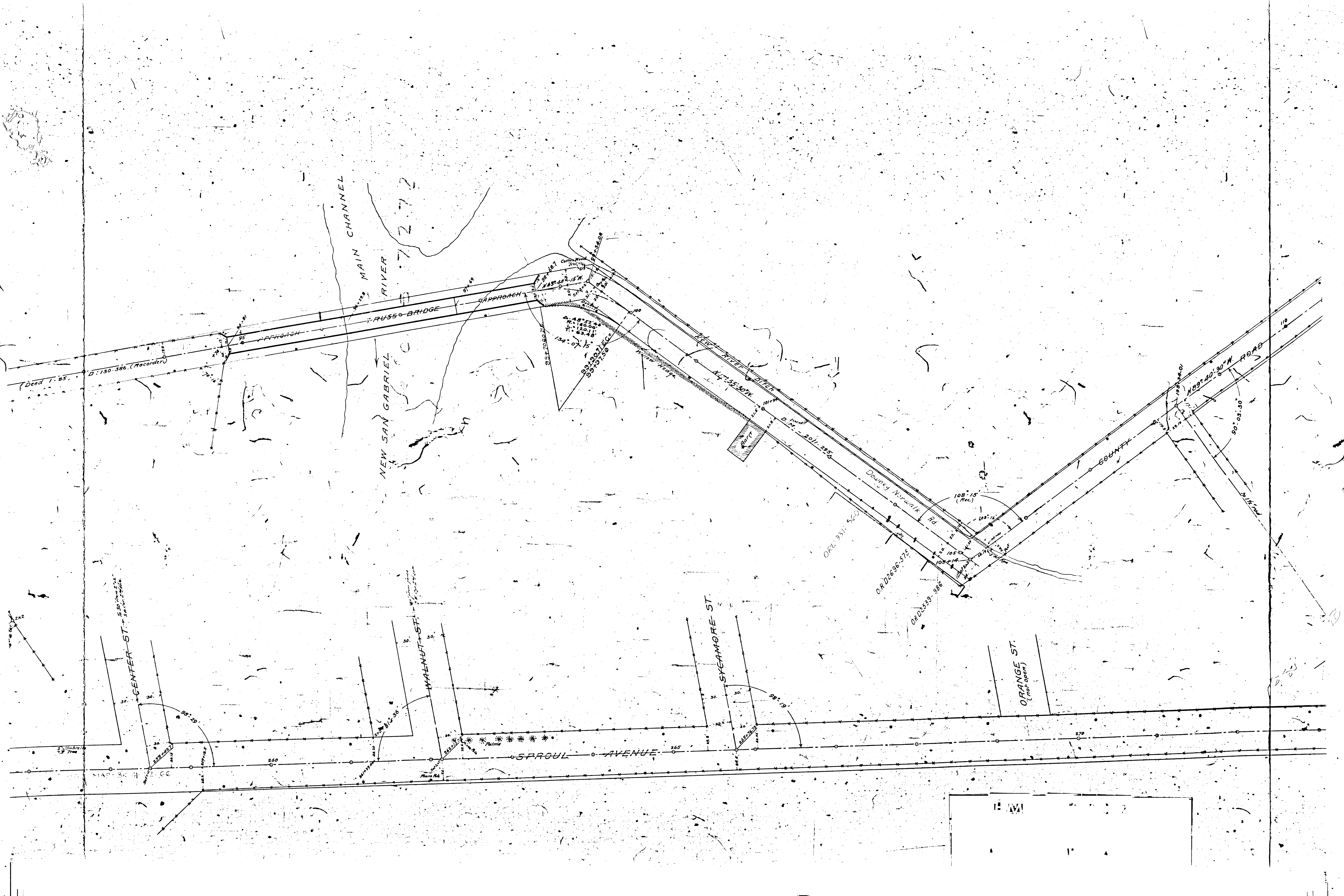
DOWNEY & SANFORD
BRIDGE ROAD

R. F. Newcomb

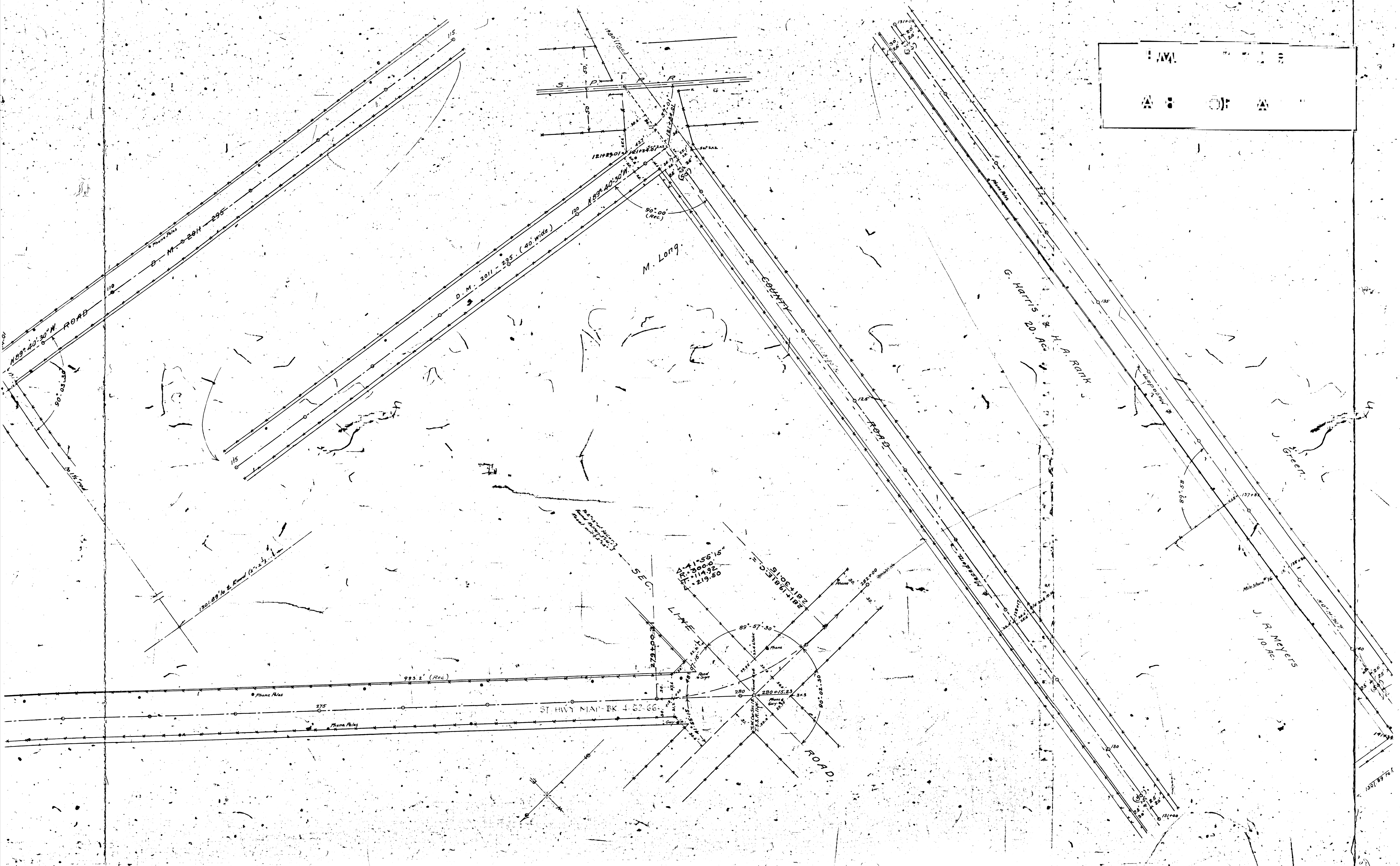
M. Wells
Deeded Oct. 2 1911

G. W. Pangborn





AM 7 1/2 S
A 5 OF A



N 89° 40' 30" W ROAD

D. M. 2011 - 285' (40' wide)

M. Long

G. Harris & H. A. Rank

SEC. LINE

ST. HWY MARK + 62.66

ROAD

J. R. Meyers

Green

41° 56' 15"
14.92
219.50

Phone Poles

Phone Poles

Phone Poles

Phone

Phone

Phone

Phone

Phone

Phone

Phone

Phone

Phone

Phone

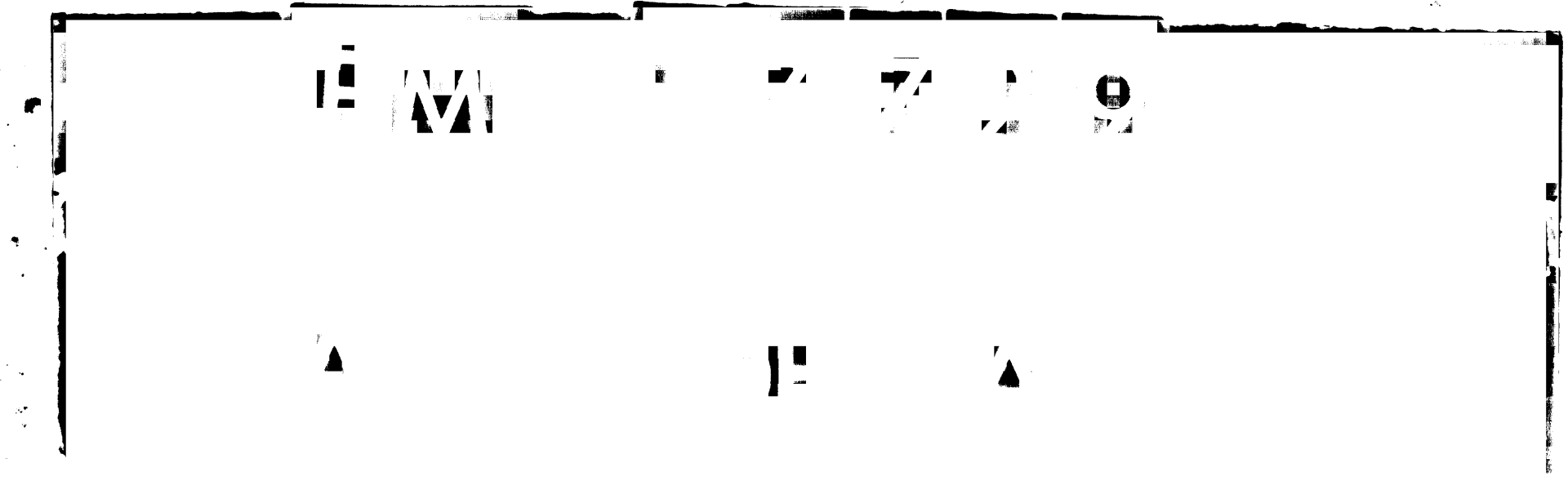
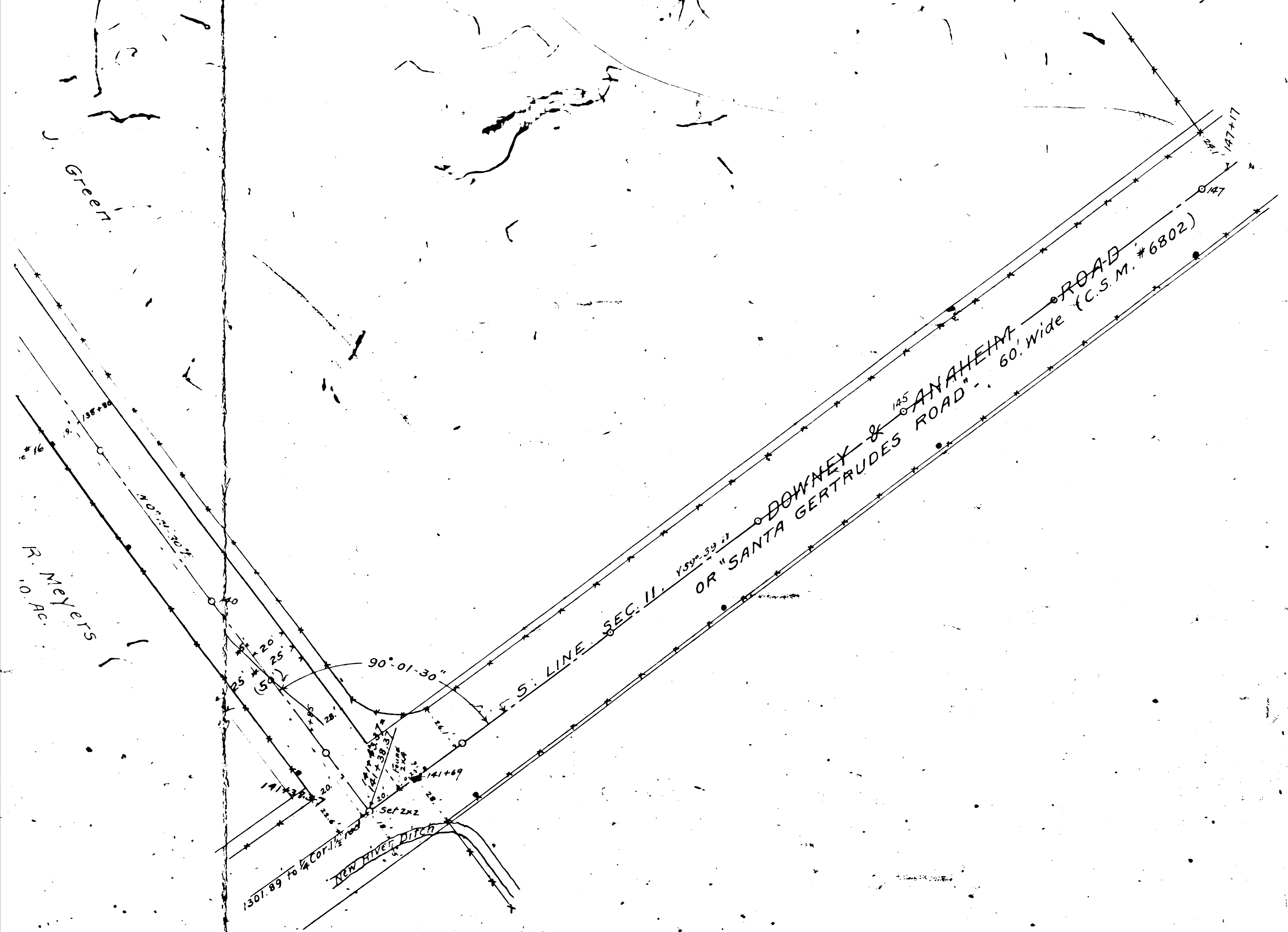
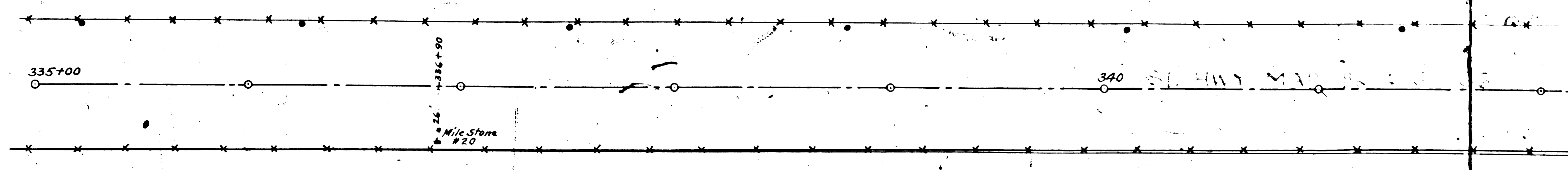
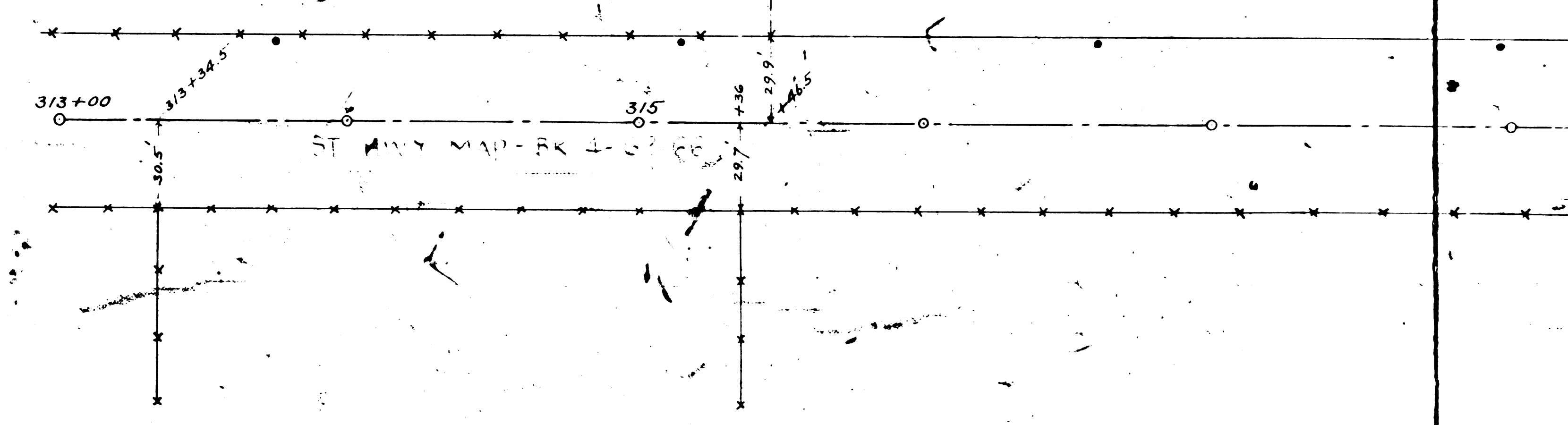
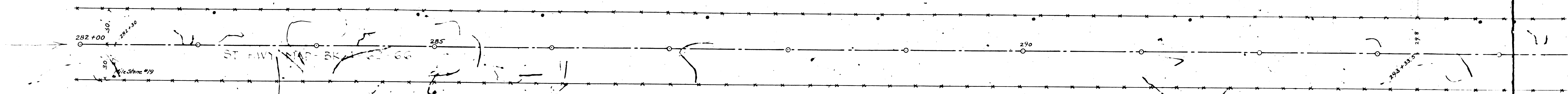
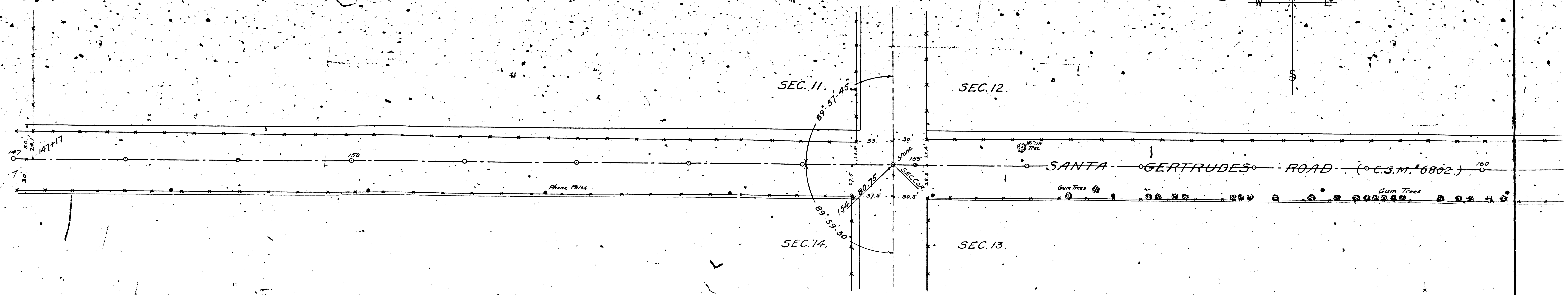
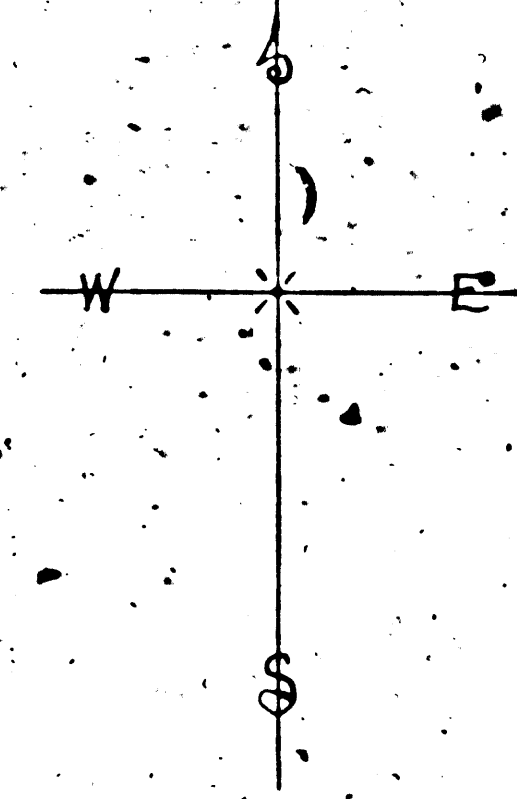
Phone

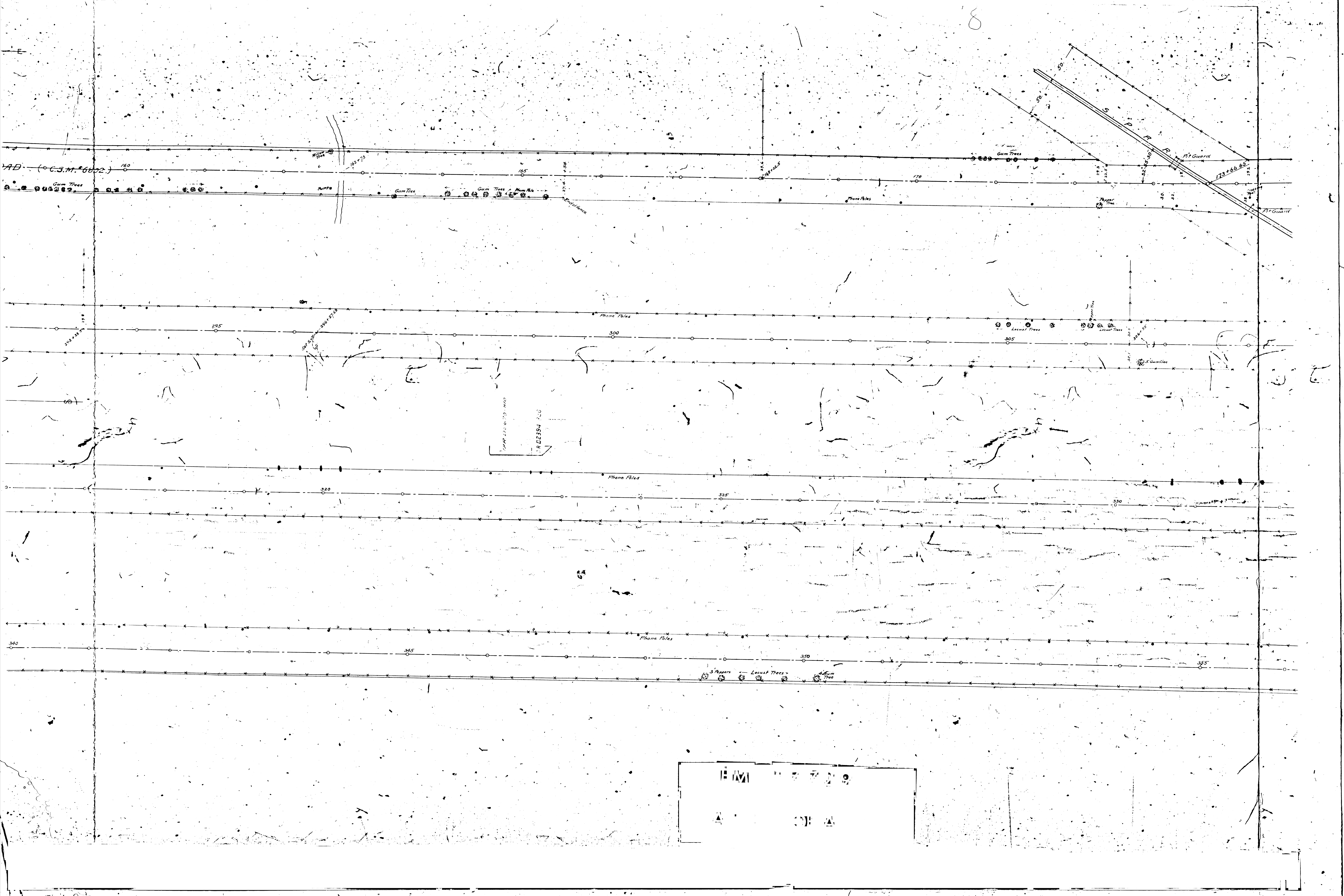
Phone

Phone

Phone

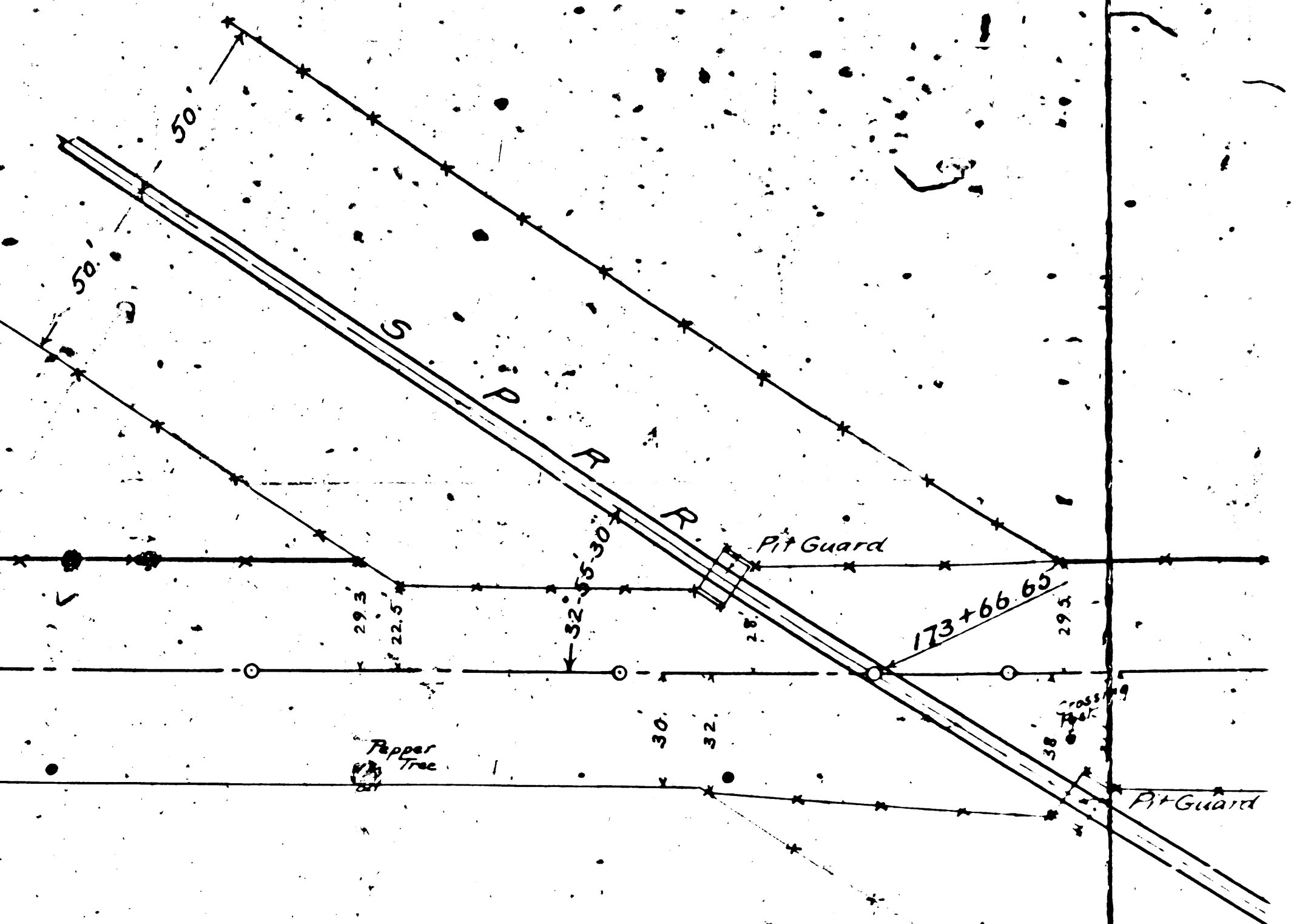
Phone





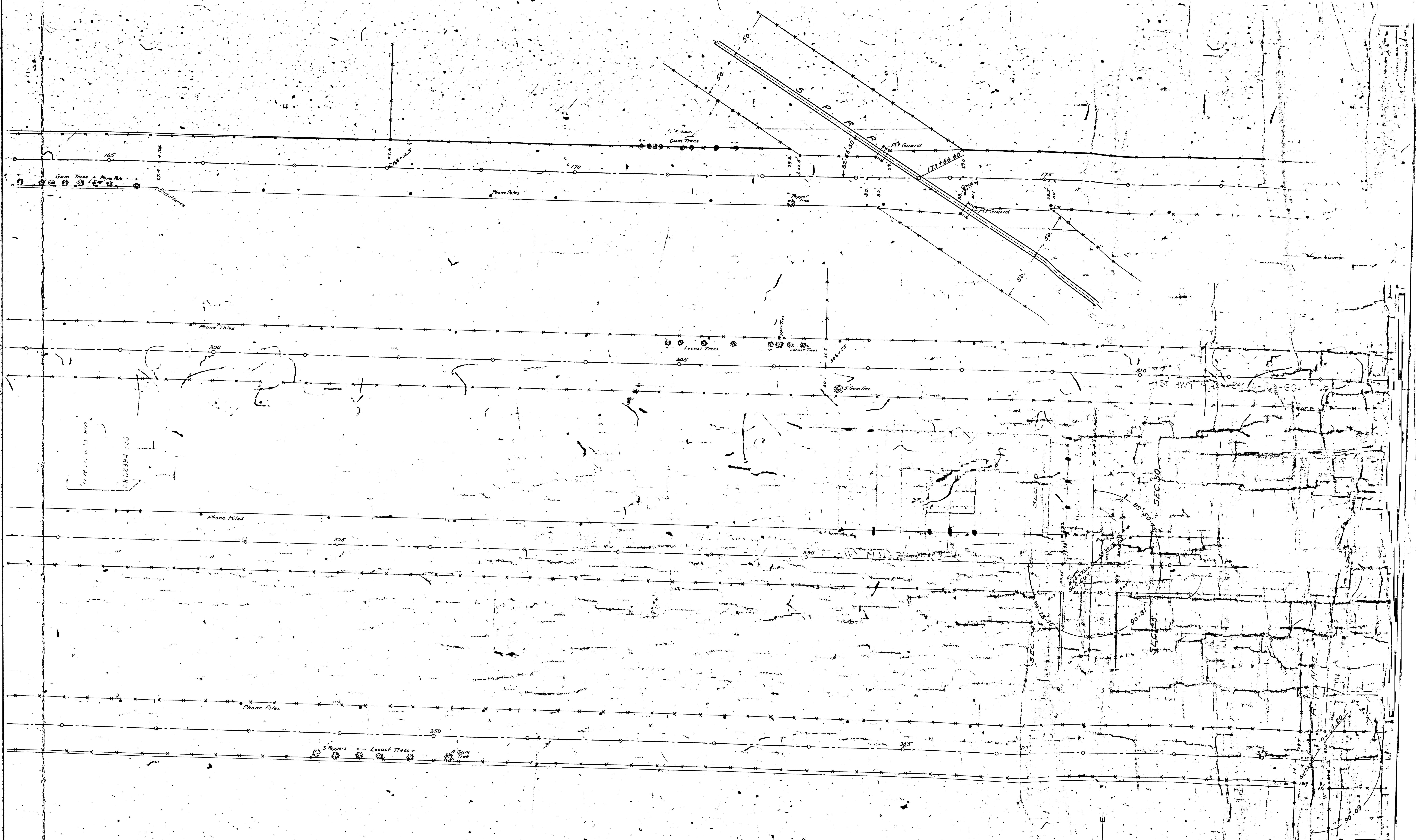
8

AD (C.S.M. 6602)



14 22394 700

E.M.I.
3/25/50



1402354 200
1402354 200

