

SAN GABRIEL & EL MONTE ROAD

VALLEY ROAD TO EL MONTE - POMONA ROAD

Field Work by A.B.S. F.B. 89

Office Work by W.H.S.

Scale 1 in. = 50 FEET

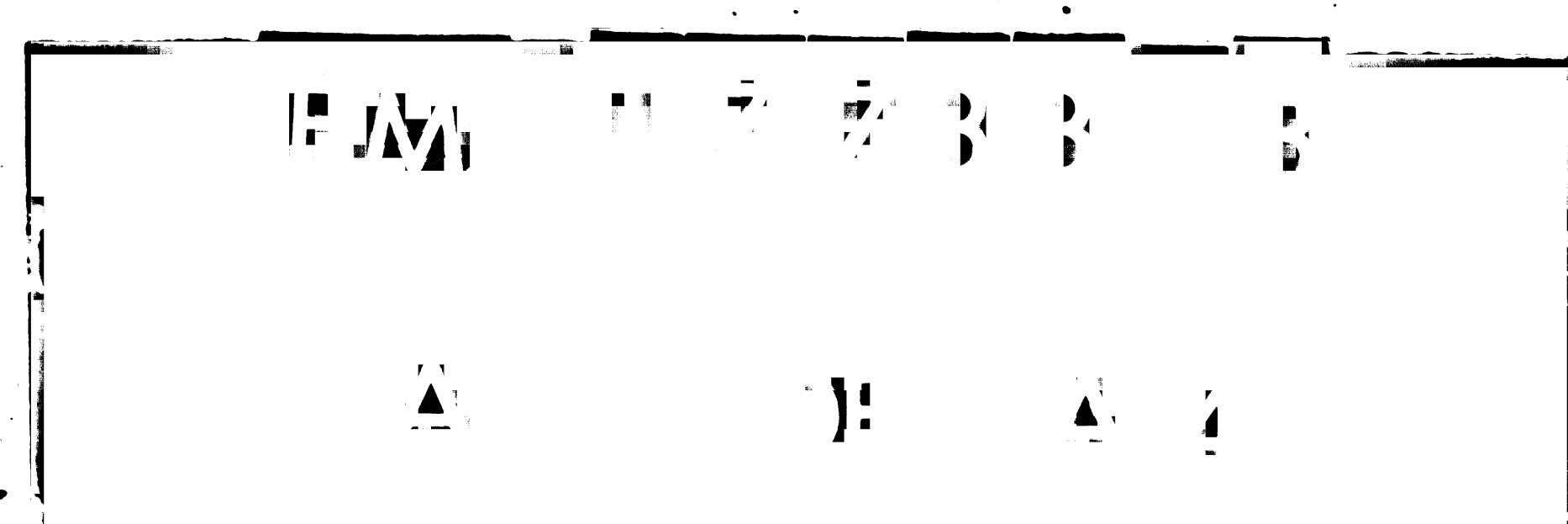
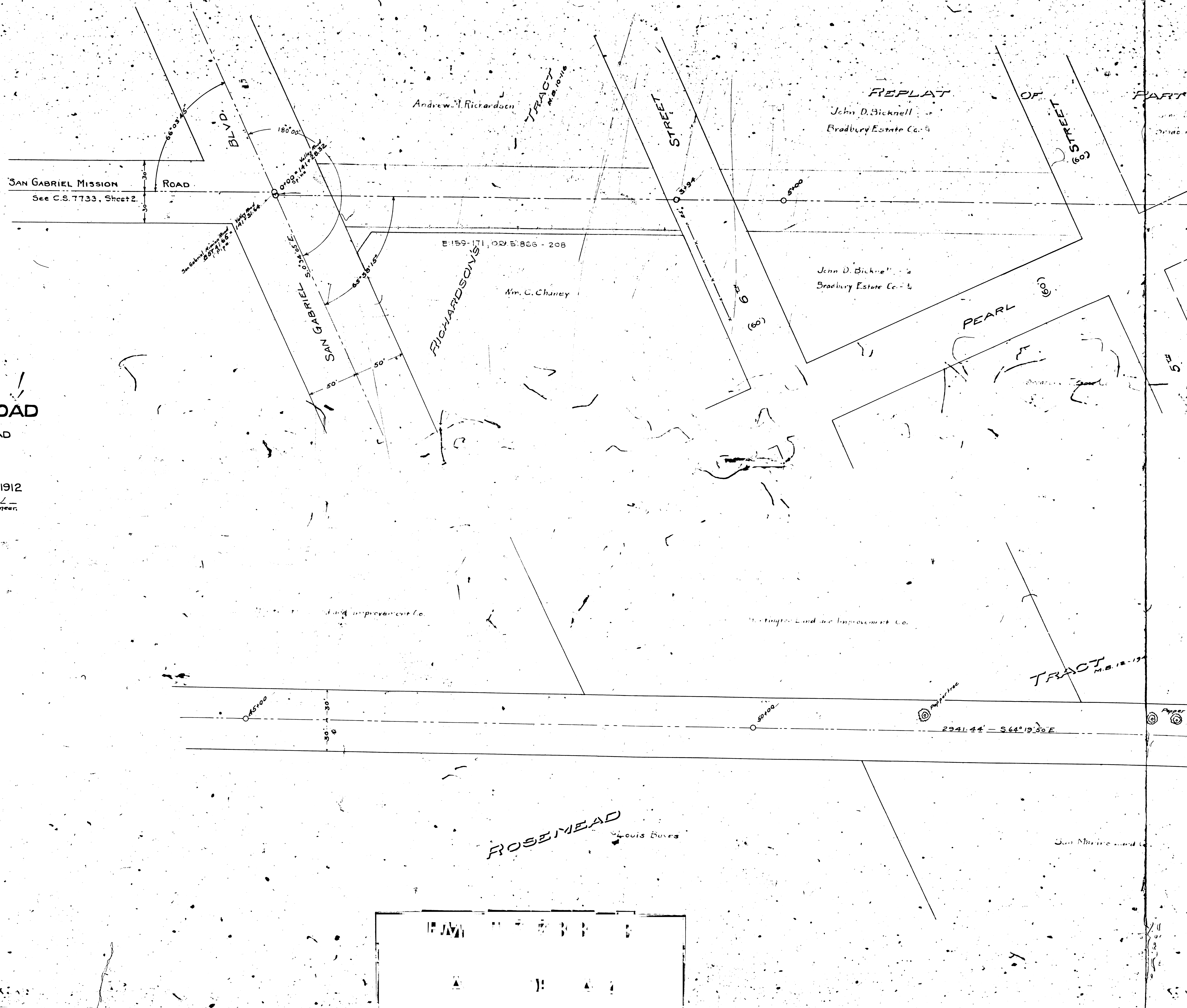
Approved Aug. 31-1912

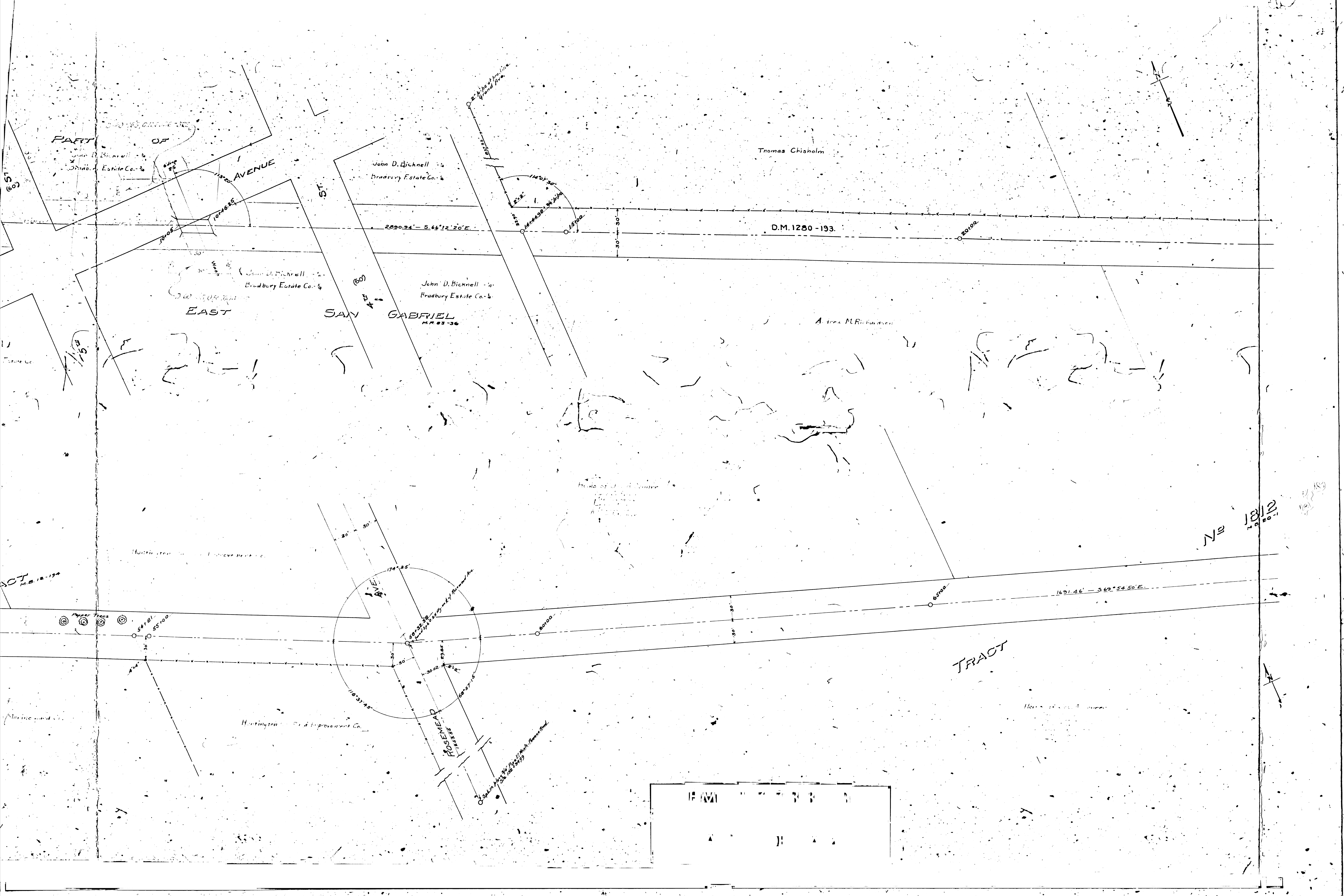
OFFICE OF
LOS ANGELES COUNTY HIGHWAY COMMISSION
W.H. Starnes
Chief Engineer

A-391

Note: Bearings taken from C.S. 7252.

C.S. MAP No. 7733, SHEET 3.





PART OF

AVENUE

ST.

John D. Bicknell
Bradbury Estate Co.

Thomas Chisholm

D.M. 1280-193

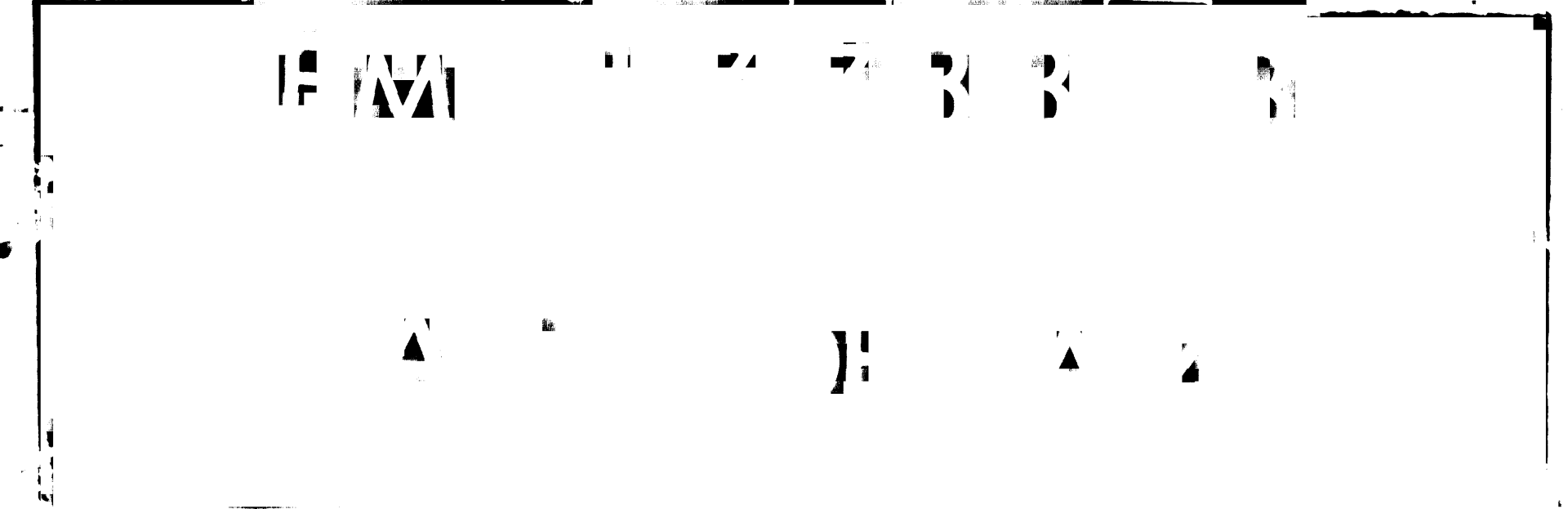
EAST

SAN

GABRIEL
M.R. 23-36

A. Lee M. Richardson

TRACT



No 1812

Ray V. Richardson

Della M. Mevine

Geo. L. Binder

TRACT

D:1283-241

Kate I. Richardson

John E. Quimby

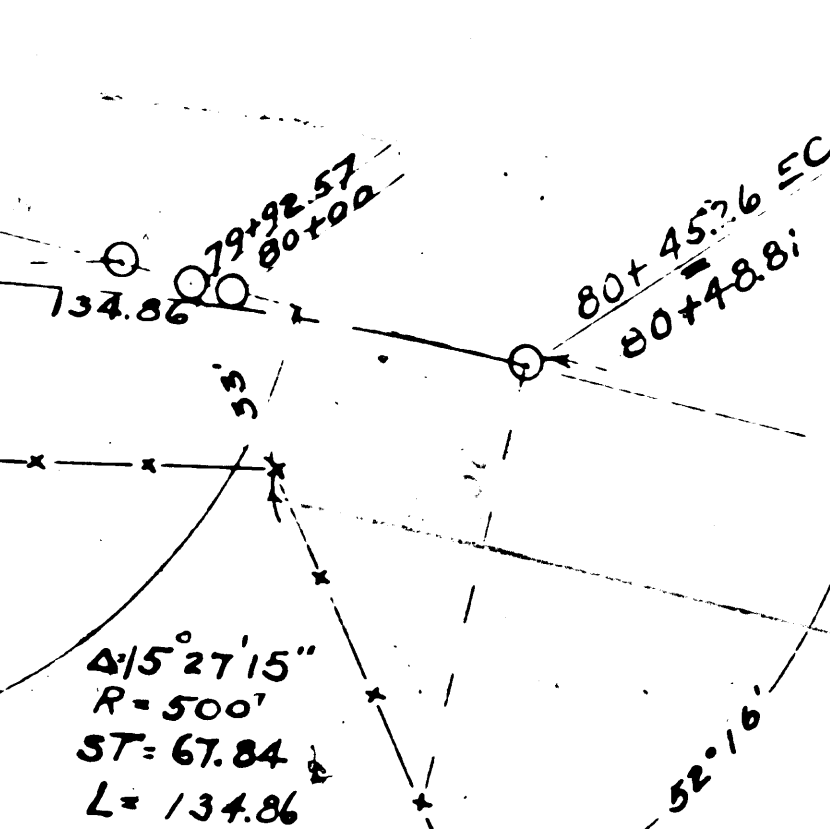
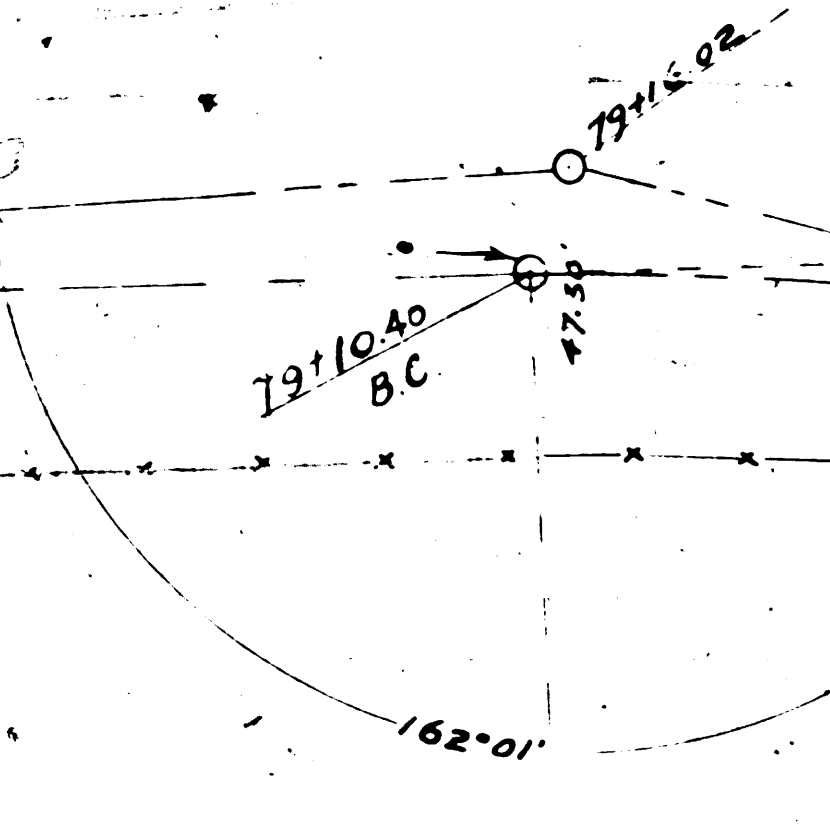
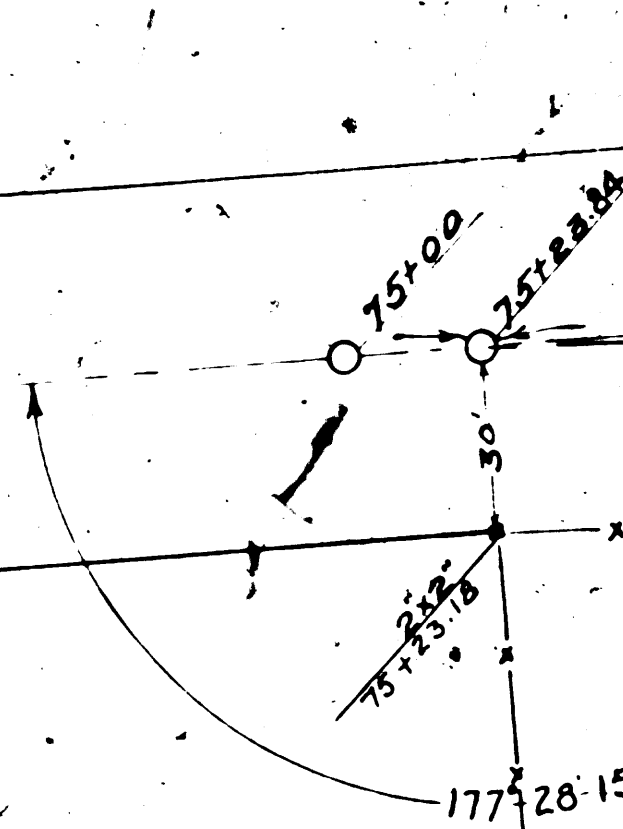
ROSEMEAD

John E. Quimby

John E. Quimby

1812
M.B. 20-195

SE Cor of Lot 3



415° 27' 15"
R = 500'
ST = 67.84
L = 134.84

LOS ANGELES

