

Mary A. Ormsby
Chas. W. Bunt
Ephriam G. Angell

Mary E. Rich

Nils Enokson

C.J. Wigdal

Wade A. Horton

Malinda C. Hewitt

Chas. A. Canfield

L. Dav. Tweedy

Lizzie Davidson

Alice

J. Stewart

Allen C. Neighbors

Los Angeles County

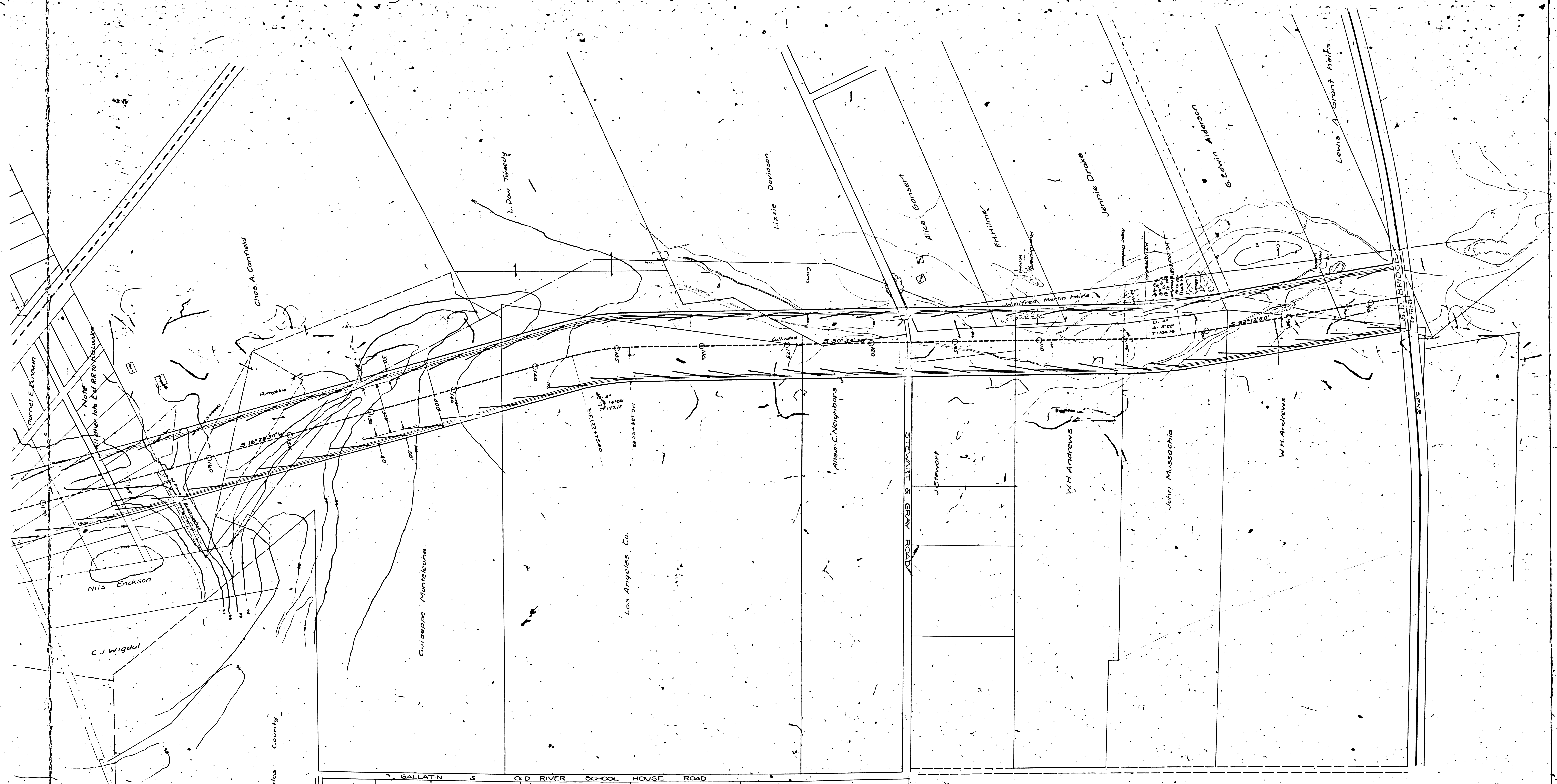
Los Angeles County

Los Angeles Co.

GALLATIN & OLD RIVER SCHOOL HOUSE ROAD

STEWART & GRAY ROAD

Approved by County Supervisors this day of Nov. 1911



SAN ANTONIO PROTECTION DISTRICT
 MAP SHOWING LOCATION OF RIVER CHANNEL
 SO. PAC. R.R. TO SO. LINE OF COUNTY FARM
 BY
 FRANK H. OLMSTED, DISTRICT ENGR.
 SCALE 1"=200'

Approved by County Supervisors this day of Nov 1911

NOTE
 Roads and property lines from Co. Survey 7705
 Channel located from Survey by F.H. Olmsted