

LOS ANGELES COUNTY HIGHWAY COMMISSION  
RIGHT OF WAY MAP OF

# EAGLE ROCK ROAD

FROM SAN RAFAEL AVE TO THE WESTERLY  
CITY BOUNDARY OF PASADENA

SCALE - 1 IN. = 50 FT. FEB. 15, 1912.

Drawn by L.R.S.  
COUNTY SURVEYOR'S MAP No 7783.

## A-387

CHEVIOTDALE  
M. B. 13-74875

TRACT

C.B. SCOVILLE

Victor Beaudry to Alexander R. Campbell-Johnston  
Oct. 11, 1883 - Deeds 112 - Page 112  
A.R. Campbell-Johnston to J.W. Scoville  
Aug. 2, 1886 - Deeds 167 - Page 506

$\Delta = 53^{\circ}44'5"$   
 $R = 299.41'$   
 $T = 152.27'$   
 $L = 281.73'$

$\Delta = 53^{\circ}15'$   
 $R = 300'$   
 $T = 150.39'$   
 $L = 278.82'$

TRACT No 183  
M. B. 14-18

SAN RAFAEL AVE.

SAN RAFAEL HEIGHTS  
M. B. 1-109  
C.W. BAILEY

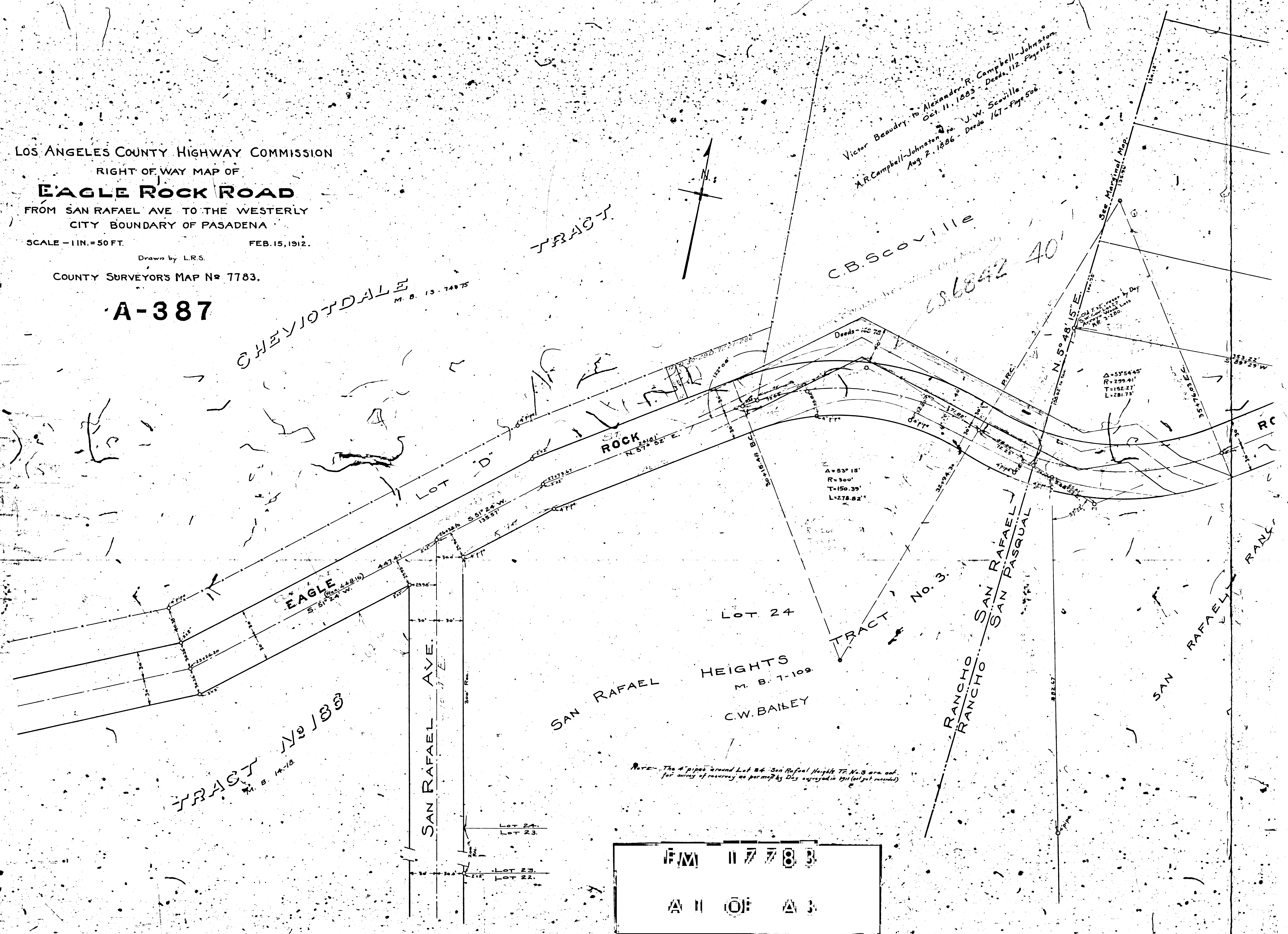
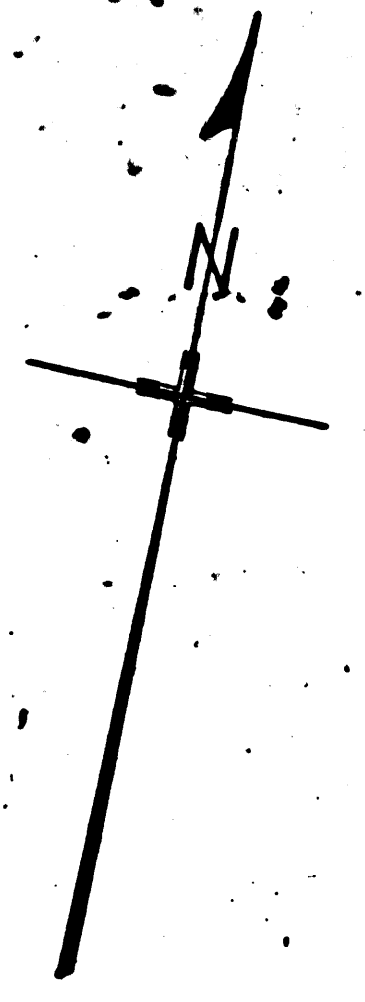
TRACT No. 3

RANCHO SAN RAFAEL  
RANCHO SAN PASQUAL

SAN RAFAEL RANCHO

Note: The 4" pipes around Lot 24 San Rafael Heights Tr. No. 3 are out of survey of roadway as permitted by City approved in 1911 (not recorded)

F.M. 117783  
A II OF A 3



Hander R. Campbell - Deeds 112, Page 12  
1886 - Deeds 167 - Page 504  
to J.W. Scoville  
1886 - Deeds 167 - Page 504

110  
1892 10

RANCHO  
RANCHO  
SAN RAFAEL  
SAN RAFAEL  
SAN PASQUAL

SAN RAFAEL RANCHO

C. B. SCOVILLE

C.S. B-1139

LOT 25

LOT 26

LOT 27

LOT 28

LOT 29

ROAD

WESTERN CITY

ARROYO

RUDOLPH SCHIFFMAN

WOOD

PASADENA

LOYS

RIGHT OF OCCUPATION AND ENTRY

BOUNDARY

For lots 26, 27 for park purp. - E. 23-171, Res. 6585

F.M. 117783  
A 2 OF A 3

See Marginal Map

See Marginal Map

See C.S. 624

See C.S. 624

See C.S. 624

See C.S. 624

See C.S. 624

See C.S. 624

See C.S. 624

See C.S. 624

See C.S. 624

See C.S. 624

See C.S. 624

See C.S. 624

See C.S. 624

See C.S. 624

See C.S. 624

See C.S. 624

See C.S. 624

See C.S. 624

See C.S. 624

See C.S. 624

See C.S. 624

See C.S. 624

See C.S. 624

See C.S. 624

See C.S. 624

See C.S. 624

See C.S. 624

See C.S. 624

See C.S. 624

See C.S. 624

See C.S. 624

See C.S. 624

See C.S. 624

See C.S. 624

See C.S. 624

See C.S. 624

See C.S. 624

See C.S. 624

See C.S. 624

See C.S. 624

See C.S. 624

See C.S. 624

See C.S. 624

See C.S. 624

See C.S. 624

See C.S. 624

See C.S. 624

See C.S. 624

See C.S. 624

See C.S. 624

See C.S. 624

See C.S. 624

See C.S. 624

See C.S. 624

See C.S. 624

See C.S. 624

See C.S. 624

See C.S. 624

See C.S. 624

See C.S. 624

See C.S. 624

See C.S. 624

See C.S. 624

See C.S. 624

See C.S. 624

See C.S. 624

See C.S. 624

See C.S. 624

See C.S. 624

See C.S. 624

See C.S. 624

See C.S. 624

See C.S. 624

See C.S. 624

See C.S. 624

See C.S. 624

See C.S. 624

See C.S. 624

See C.S. 624

See C.S. 624

See C.S. 624

See C.S. 624

See C.S. 624

See C.S. 624

See C.S. 624

See C.S. 624

See C.S. 624

See C.S. 624

See C.S. 624

See C.S. 624

See C.S. 624

See C.S. 624

See C.S. 624

See C.S. 624

See C.S. 624

See C.S. 624

See C.S. 624

See C.S. 624

See C.S. 624

See C.S. 624

See C.S. 624

See C.S. 624

See C.S. 624

See C.S. 624

See C.S. 624

See C.S. 624

See C.S. 624

See C.S. 624

See C.S. 624

See C.S. 624

See C.S. 624

See C.S. 624

See C.S. 624

See C.S. 624

See C.S. 624

See C.S. 624

See C.S. 624

See C.S. 624

See C.S. 624

See C.S. 624

See C.S. 624

See C.S. 624

See C.S. 624

See C.S. 624

See C.S. 624

See C.S. 624

See C.S. 624

See C.S. 624

See C.S. 624

See C.S. 624

See C.S. 624

See C.S. 624

See C.S. 624

See C.S. 624

See C.S. 624

See C.S. 624

See C.S. 624

See C.S. 624

See C.S. 624

See C.S. 624

See C.S. 624

See C.S. 624

See C.S. 624

See C.S. 624

See C.S. 624

See C.S. 624

See C.S. 624

See C.S. 624

See C.S. 624

See C.S. 624

See C.S. 624

See C.S. 624

See C.S. 624

See C.S. 624

See C.S. 624

See C.S. 624

See C.S. 624

See C.S. 624

See C.S. 624

See C.S. 624

See C.S. 624

See C.S. 624

See C.S. 624

See C.S. 624

See C.S. 624

See C.S. 624

See C.S. 624

See C.S. 624

See C.S. 624

See C.S. 624

See C.S. 624

See C.S. 624

See C.S. 624

See C.S. 624

See C.S. 624

See C.S. 624

See C.S. 624

See C.S. 624

See C.S. 624

See C.S. 624

See C.S. 624

See C.S. 624

See C.S. 624

See C.S. 624

See C.S. 624

See C.S. 624

See C.S. 624

See C.S. 624

See C.S. 624

See C.S. 624

See C.S. 624

See C.S. 624

See C.S. 624

See C.S. 624

See C.S. 624

See C.S. 624

See C.S. 624

See C.S. 624

See C.S. 624

See C.S. 624

See C.S. 624

See C.S. 624

See C.S. 624

See C.S. 624

See C.S. 624

See C.S. 624

See C.S. 624

See C.S. 624

See C.S. 624

See C.S. 624

See C.S. 624

See C.S. 624

See C.S. 624

See C.S. 624

See C.S. 624

See C.S. 624

See C.S. 624

See C.S. 624

See C.S. 624

See C.S. 624

See C.S. 624

See C.S. 624

See C.S. 624

See C.S. 624

See C.S. 624

See C.S. 624

See C.S. 624

See C.S. 624

See C.S. 624

See C.S. 624

See C.S. 624

See C.S. 624

See C.S. 624

See C.S. 624

See C.S. 624

See C.S. 624

See C.S. 624

See C.S. 624

See C.S. 624

See C.S. 624

See C.S. 624

See C.S. 624

See C.S. 624

See C.S. 624

See C.S. 624

See C.S. 624

See C.S. 624

See C.S. 624

See C.S. 624

See C.S. 624

See C.S. 624

See C.S. 624

See C.S. 624

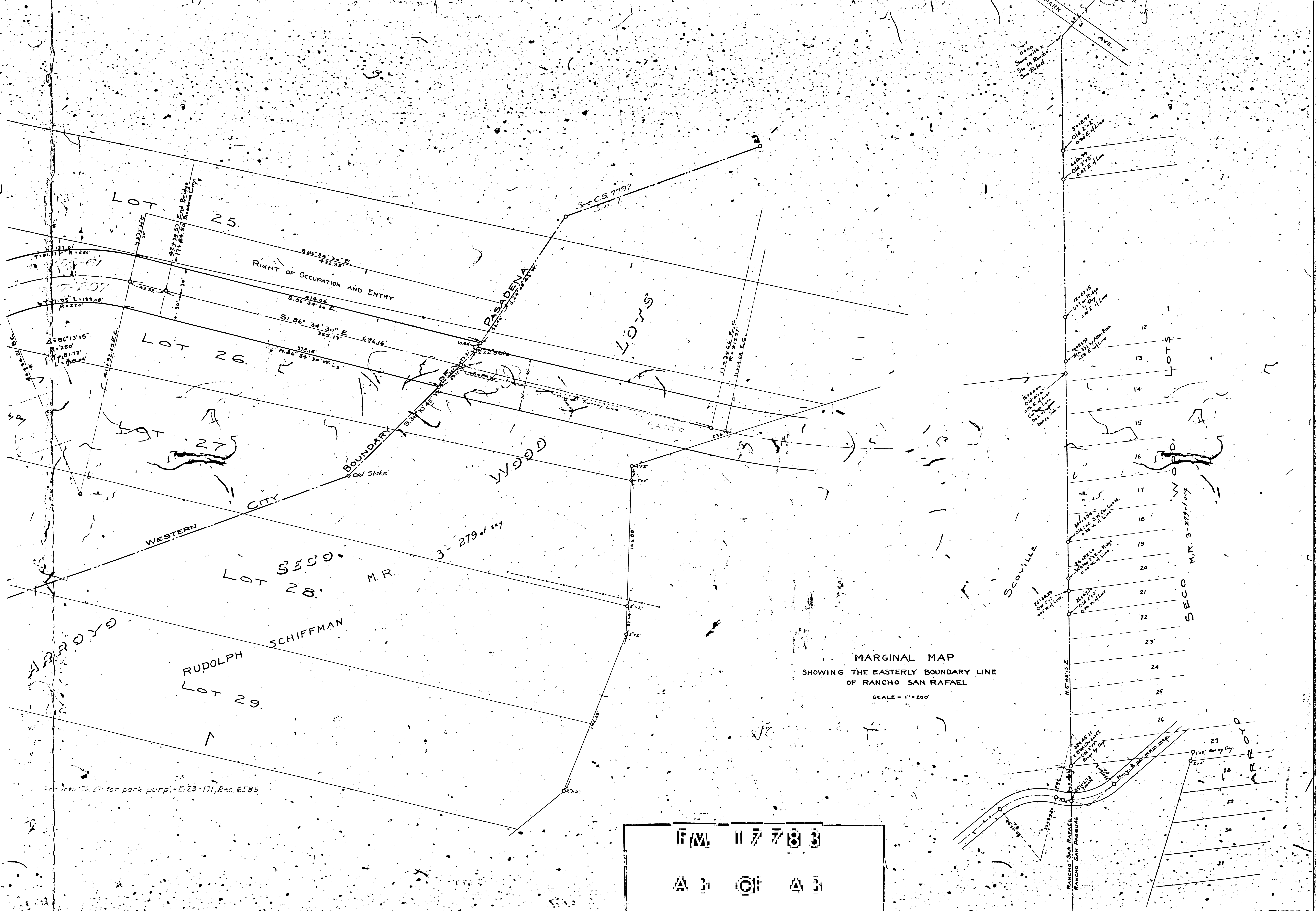
See C.S. 624

See C.S. 624

See C.S. 624

See C.S. 624

See C.S. 6



MARGINAL MAP  
 SHOWING THE EASTERLY BOUNDARY LINE  
 OF RANCHO SAN RAFAEL  
 SCALE - 1" = 200'

F/M 117783  
 A 3 OF A 3

lots 24, 27 for park purp. - E: 23-171, Res. 6585