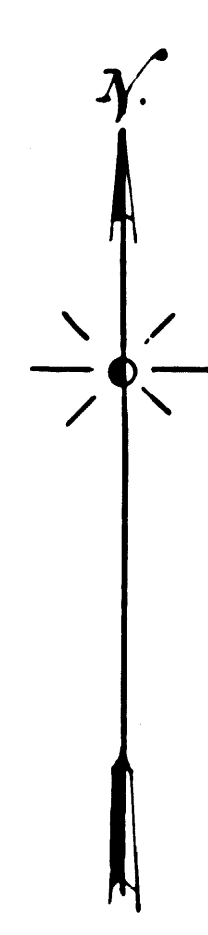
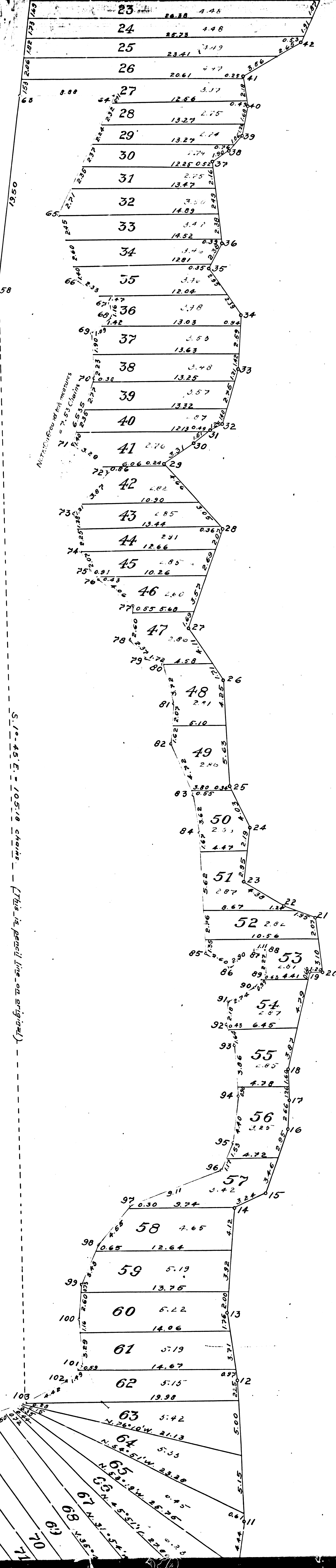
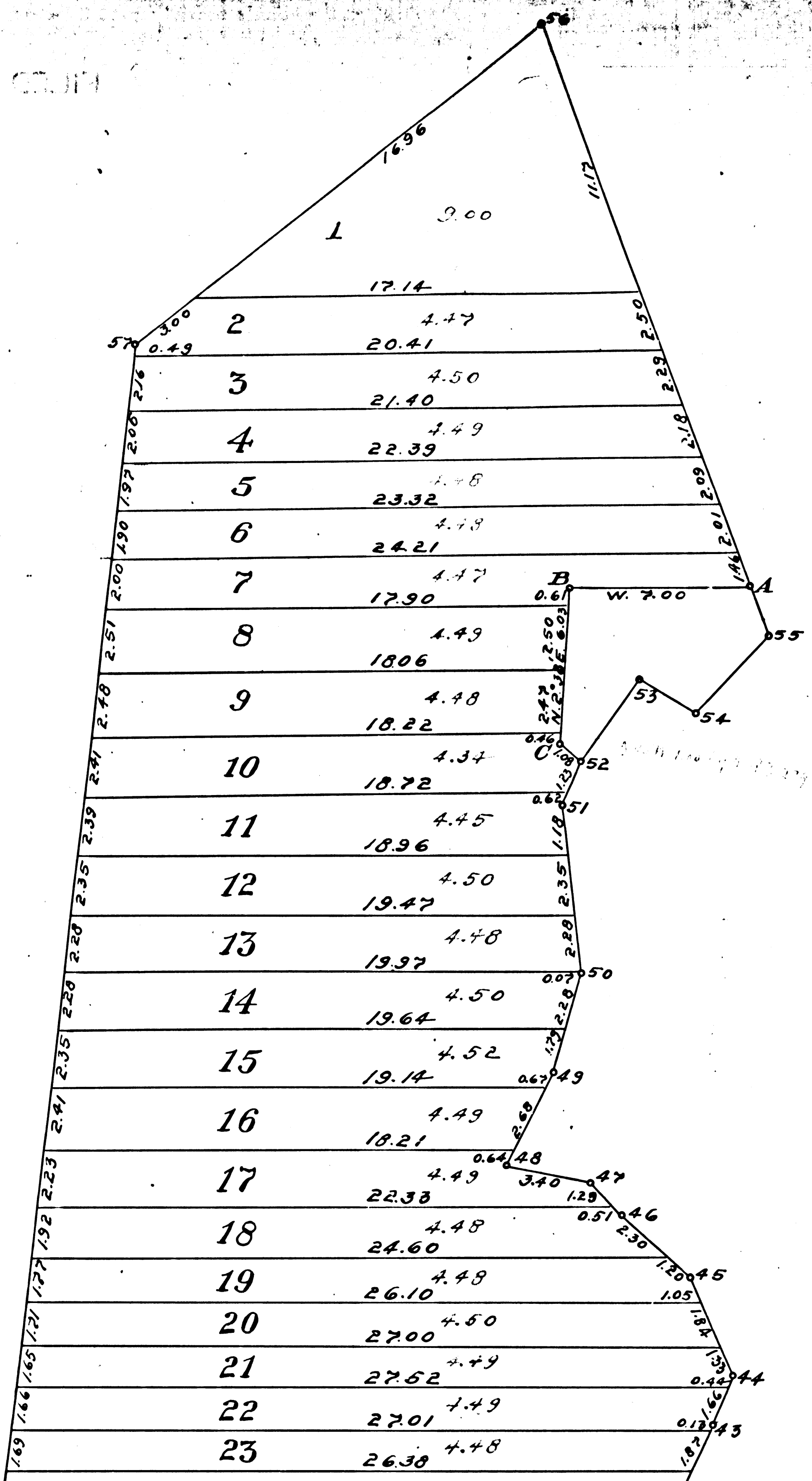


ASSTY. COM. CAM. CRUI.

FIELD BOOK NO. 101



F.M. 17788
 A 1 OF A 2

STATIONS	BEARINGS	DISTANCES
1-2	N 52° 01' E	3.06
2-3	N 24° 02' E	3.06
3-4	N 09° 39' E	12.06
4-5	N 44° 38' E	4.05
5-6	N 24° 52' E	5.70
6-7	N 52° 51' E	10.75
7-8	N 44° 31' E	10.75
8-9	N 46° 31' E	5.31
9-10	N 23° 49' E	12.33
10-11	N 3° 19' W	13.60
11-12	N 9° 31' W	6.45
12-13	N 3° 26' E	10.03
13-14	N 44° 41' E	3.25
14-15	N 19° 37' E	6.45
15-16	N 3° 17' E	2.66
16-17	N 3° 53' W	2.66
17-18	N 12° 17' E	9.32
18-19	S 09° 44' E	1.20
19-20	N 7° 14' W	5.12
20-21	N 69° 49' W	1.97
21-22	N 69° 22' W	4.39
22-23	N 7° 12' E	5.14
23-24	N 27° 09' W	4.37
24-25	N 32° 17' W	2.02
25-26	N 33° 39' W	5.02
26-27	N 78° 54' E	10.01
27-28	N 78° 54' E	10.01
28-29	N 55° 40' E	3.31
29-30	N 55° 32' E	2.00
30-31	N 64° 42' E	5.36
31-32	N 3° 22' E	4.35
32-33	N 34° 22' E	5.35
33-34	N 57° 05' E	2.73
34-35	N 6° 43' W	2.22
35-36	N 25° 35' E	1.90
36-37	N 40° 42' E	1.95
37-38	N 12° 17' E	2.95
38-39	N 9° 46' W	2.02
39-40	N 59° 38' E	6.21
40-41	N 22° 11' E	2.10
41-42	N 22° 48' W	4.23
42-43	N 33° 10' W	3.60
43-44	N 33° 44' W	1.80
44-45	N 30° 32' W	3.40
45-46	N 26° 22' E	3.39
46-47	N 49° 12' E	4.07
47-48	N 6° 16' W	6.52
48-49	N 51° 44' E	1.85
49-50	N 38° 04' E	3.08
50-51	N 61° 02' E	2.65
51-52	N 42° 22' E	4.02
52-53	N 20° 00' W	26.20
53-54	S 52° 12' W	19.20
54-55	S 6° 15' W	20.50
55-56	S 00° 00' W	10.56
56-57	S 34° 30' W	24.40
57-58	S 34° 30' W	24.40
58-59	S 27° 10' W	6.84
59-60	S 21° 14' E	10.30
60-61	S 41° 12' E	0.80
61-62	S 44° 20' W	12.71
62-63	S 15° 27' E	6.45
63-64	N 23° 31' E	3.00
64-65	S 71° 18' E	1.16
65-66	S 50° 46' W	2.51
66-67	S 24° 36' E	4.19
67-68	S 74° 15' W	6.35
68-69	S 53° 21' E	4.15
69-70	S 39° 10' W	3.00
70-71	S 39° 03' E	3.63
71-72	S 21° 46' E	2.07
72-73	S 30° 36' E	1.32
73-74	S 32° 16' E	4.05
74-75	S 6° 07' W	3.15
75-76	S 47° 33' E	2.75
76-77	N 62° 00' E	1.25
77-78	S 14° 00' E	3.25
78-79	S 4° 44' W	3.69
79-80	S 24° 02' E	3.29
80-81	S 04° 02' E	1.62
81-82	S 3° 40' E	11.40
82-83	S 50° 22' E	2.60
83-84	N 35° 01' W	2.60
84-85	S 06° 43' A	1.17
85-86	S 2° 05' W	2.29
86-87	S 32° 50' W	6.62
87-88	S 80° 32' W	2.62
88-89	S 5° 56' W	2.10
89-90	S 26° 50' W	4.07
90-91	S 4° 10' E	2.60
91-92	S 7° 00' W	4.40
92-93	S 20° 25' W	2.70
93-94	S 64° 00' W	3.11
94-95	S 33° 25' W	4.05
95-96	S 21° 50' W	4.08
96-97	S 6° 40' W	3.24
97-98	N 6° 01' E	4.46
98-99	S 46° 55' W	2.08
99-100	S 63° 20' W	4.25
100-101	S 71° 23' W	2.55
101-102	S 59° 25' W	26.65

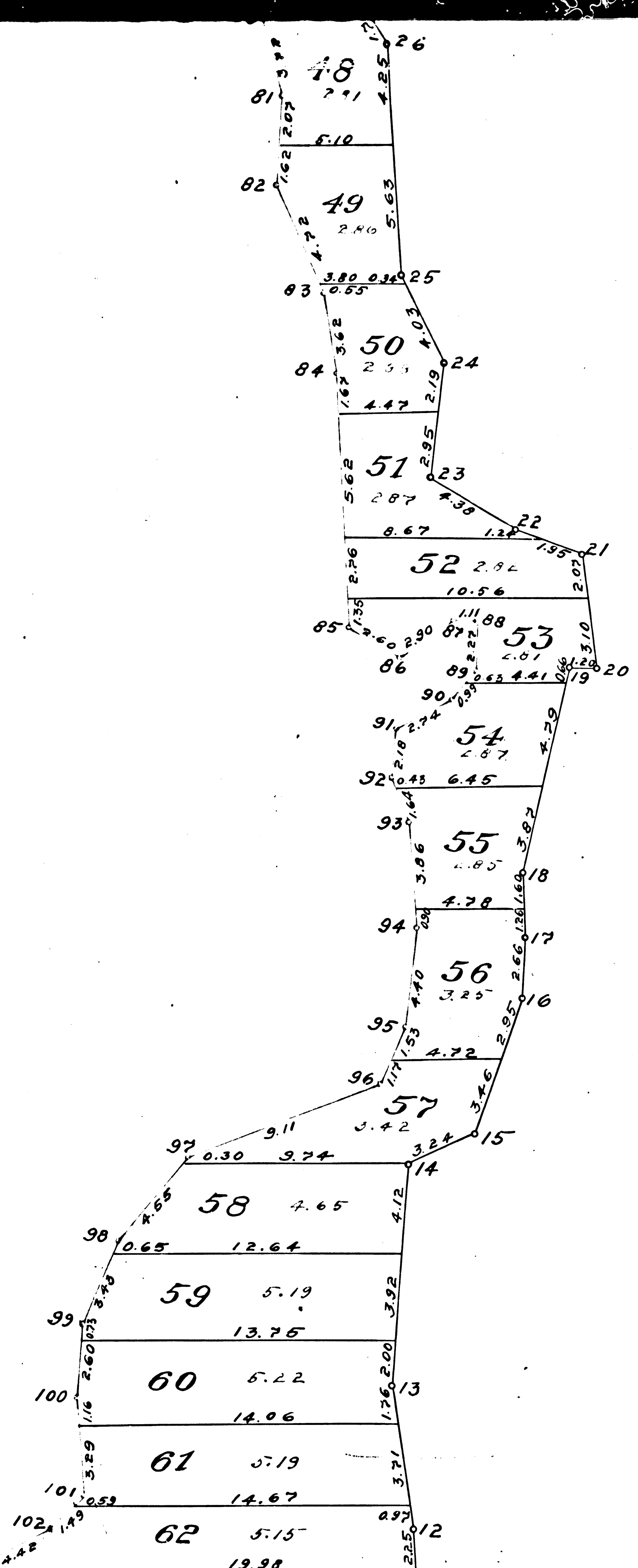
On ground this measures 7.53 ch.

S. 10° 45' E. 105.10 chains - (This is parcel line on original)

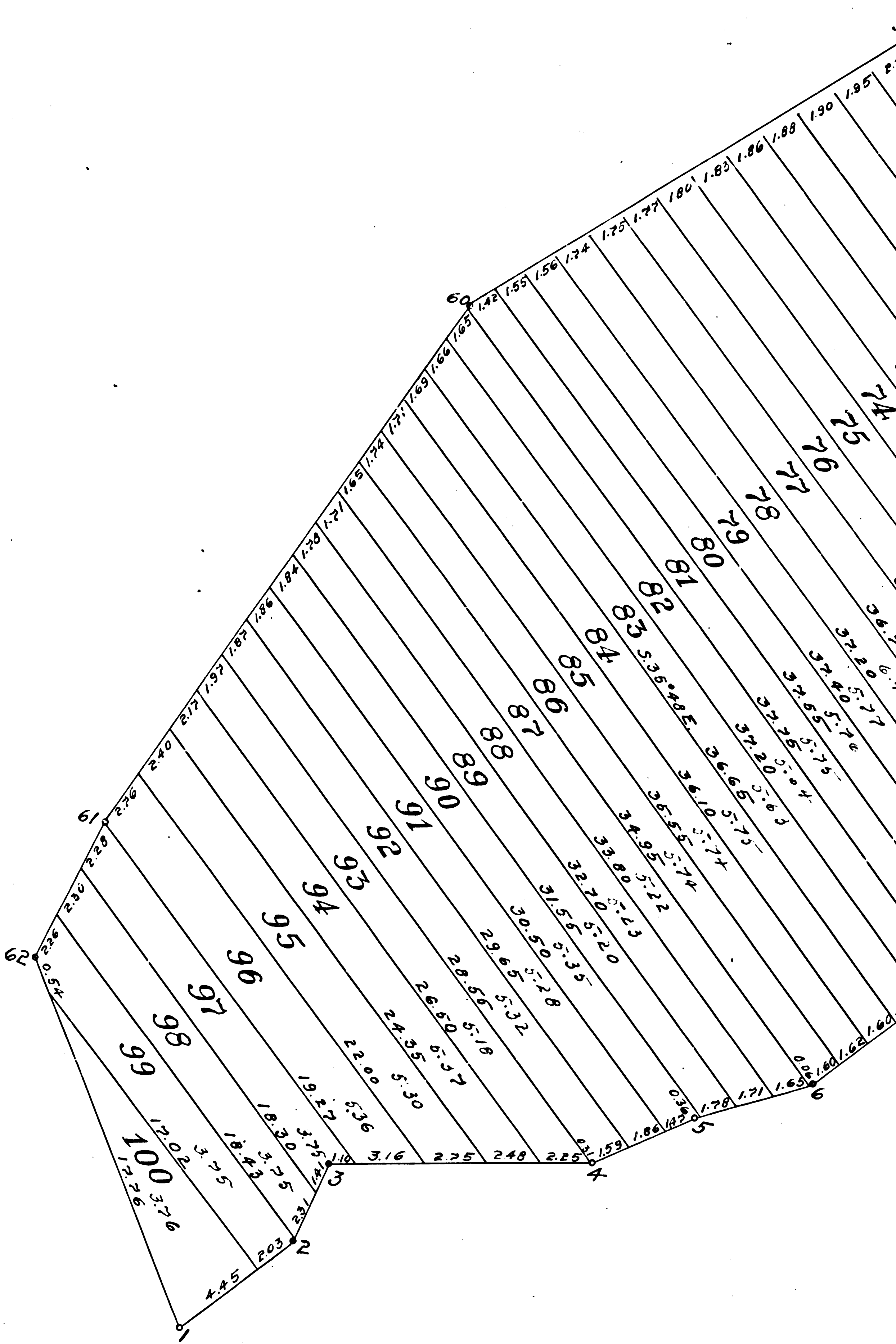
1-2	N 52° 01' E	6.475
2-3	N 24° 02' E	3.066
3-4	N 52° 01' E	6.475
4-5	N 64° 33' E	4.085
5-6	N 41° 22' E	3.750
6-7	N 52° 01' E	6.475
7-8	N 44° 31' E	4.551
8-9	N 46° 31' E	5.311
9-10	N 23° 49' E	12.333
10-11	N 3° 13' W	13.862
11-12	N 81° 31' W	6.455
12-13	N 81° 31' W	6.455
13-14	N 81° 31' W	6.455
14-15	N 81° 31' W	6.455
15-16	N 19° 37' E	6.415
16-17	N 3° 17' E	2.666
17-18	N 3° 17' E	2.666
18-19	N 12° 17' E	9.320
19-20	S 69° 44' E	1.200
20-21	N 2° 14' W	5.172
21-22	N 69° 23' W	3.139
22-23	N 69° 23' W	3.139
23-24	N 2° 12' E	5.142
24-25	N 2° 12' E	5.142
25-26	N 3° 27' W	3.882
26-27	N 33° 39' W	5.022
27-28	N 70° 04' E	10.000
28-29	N 70° 04' E	10.000
29-30	N 69° 40' E	3.311
30-31	N 55° 32' E	2.000
31-32	N 64° 12' E	1.222
32-33	N 19° 42' E	5.326
33-34	N 3° 22' E	4.995
34-35	N 3° 22' E	4.995
35-36	N 5° 05' E	2.753
36-37	N 6° 42' W	2.822
37-38	N 22° 35' E	1.392
38-39	N 9° 48' W	2.222
39-40	N 10° 34' E	2.344
40-41	N 9° 48' W	2.222
41-42	N 23° 44' E	6.214
42-43	N 23° 44' E	6.214
43-44	N 23° 44' E	6.214
44-45	N 23° 44' E	6.214
45-46	N 23° 44' E	6.214
46-47	N 23° 44' E	6.214
47-48	N 23° 44' E	6.214
48-49	N 23° 44' E	6.214
49-50	N 14° 53' E	4.077
50-51	N 6° 16' W	6.552
51-52	N 5° 27' E	6.455
52-53	N 55° 04' E	1.855
53-54	S 61° 02' E	2.665
54-55	N 50° 22' E	4.022
55-56	N 50° 22' E	4.022
56-57	S 51° 45' W	19.326
57-58	S 6° 15' W	20.500
58-59	S 6° 15' W	20.500
59-60	S 24° 00' W	12.222
60-61	S 34° 38' W	20.640
61-62	S 24° 18' W	6.882
62-63	S 21° 14' E	11.320
63-64	S 21° 14' E	11.320
64-65	S 24° 20' W	12.711
65-66	S 53° 35' E	3.000
66-67	S 53° 35' E	3.000
67-68	S 71° 18' E	1.166
68-69	S 50° 16' W	2.877
69-70	S 28° 30' E	4.155
70-71	S 17° 15' W	6.635
71-72	S 33° 10' W	3.022
72-73	S 3° 05' E	3.633
73-74	S 20° 46' E	2.077
74-75	S 30° 36' E	1.322
75-76	S 52° 16' E	4.066
76-77	S 6° 07' W	3.155
77-78	S 41° 31' E	2.377
78-79	S 62° 00' E	2.533
79-80	S 14° 08' E	3.722
80-81	S 4° 44' W	3.677
81-82	S 24° 02' E	3.577
82-83	S 0° 05' E	3.622
83-84	S 3° 40' E	11.400
84-85	S 28° 08' E	2.400
85-86	S 28° 08' E	2.400
86-87	S 32° 50' W	1.622
87-88	S 60° 52' W	2.722
88-89	S 20° 50' E	3.077
89-90	S 5° 10' E	3.766
90-91	S 2° 08' W	4.400
91-92	S 2° 08' W	4.400
92-93	S 60° 40' W	3.111
93-94	S 32° 25' W	4.400
94-95	S 2° 50' W	3.022
95-96	S 6° 30' W	3.333
96-97	S 6° 21' E	4.466
97-98	S 34° 52' W	2.222
98-99	S 63° 52' W	2.222
99-100	S 71° 25' W	2.833
100-101	S 59° 25' W	2.665

Original this measures 7.53 ch.

S. 1° 45' E. = 105° 18' Change. (This is general line on original)



F.M. 17788
 A2 OF A2



MAP OF THE ARROYO SECO WOOD LOTS

BELONGING TO THE
 SAN GABRIEL ORANGE GROVE ASSOCIATION
 Scale: 1 Inch = 5 Chains.

Surveyed in 1876
 By E.T. WRIGHT
 April, 1912. Copied from original
 in office of E.T. Wright.

See C.S. 7192 chs. 162
 M.K. 5-279 & seq.
 F.M. 12291
 Index #8