

LOS ANGELES COUNTY HIGHWAY COMMISSION

DIV. 30. SEC. 3.

EL MONTE - POMONA ROAD

FROM STA. 880+00 TO STA. 1035+00

SURVEYED - JUNE - 1909
F.B. 75

SCALE: 1 INCH = 50 FT.

A. E. LOOER, Chief Engineer.

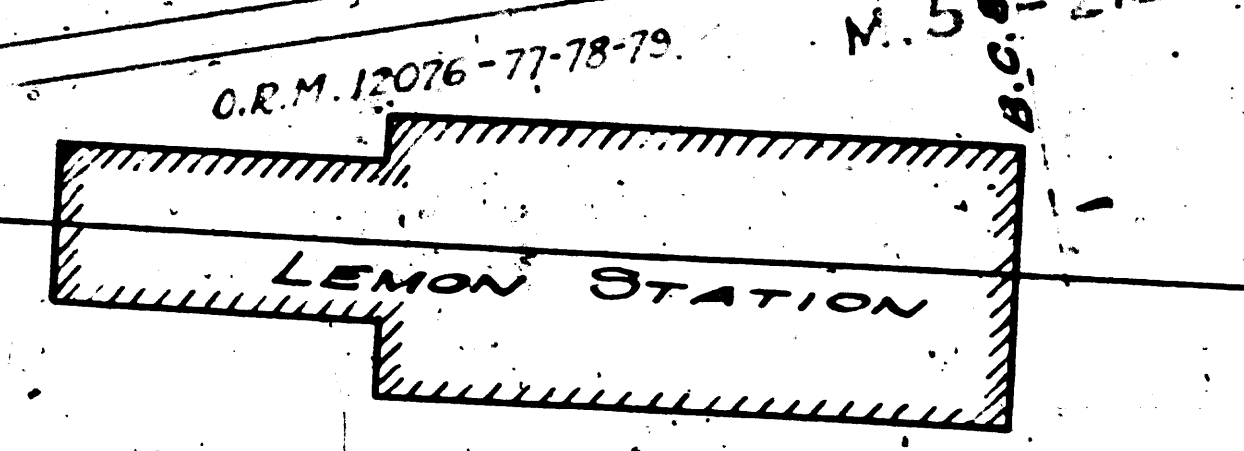
Field Work by W.O.S.
Office Work by A.W.M.C., W.M.S., E.L.Y.

FILE No. A-278.

FM 17802
A1 OF A7

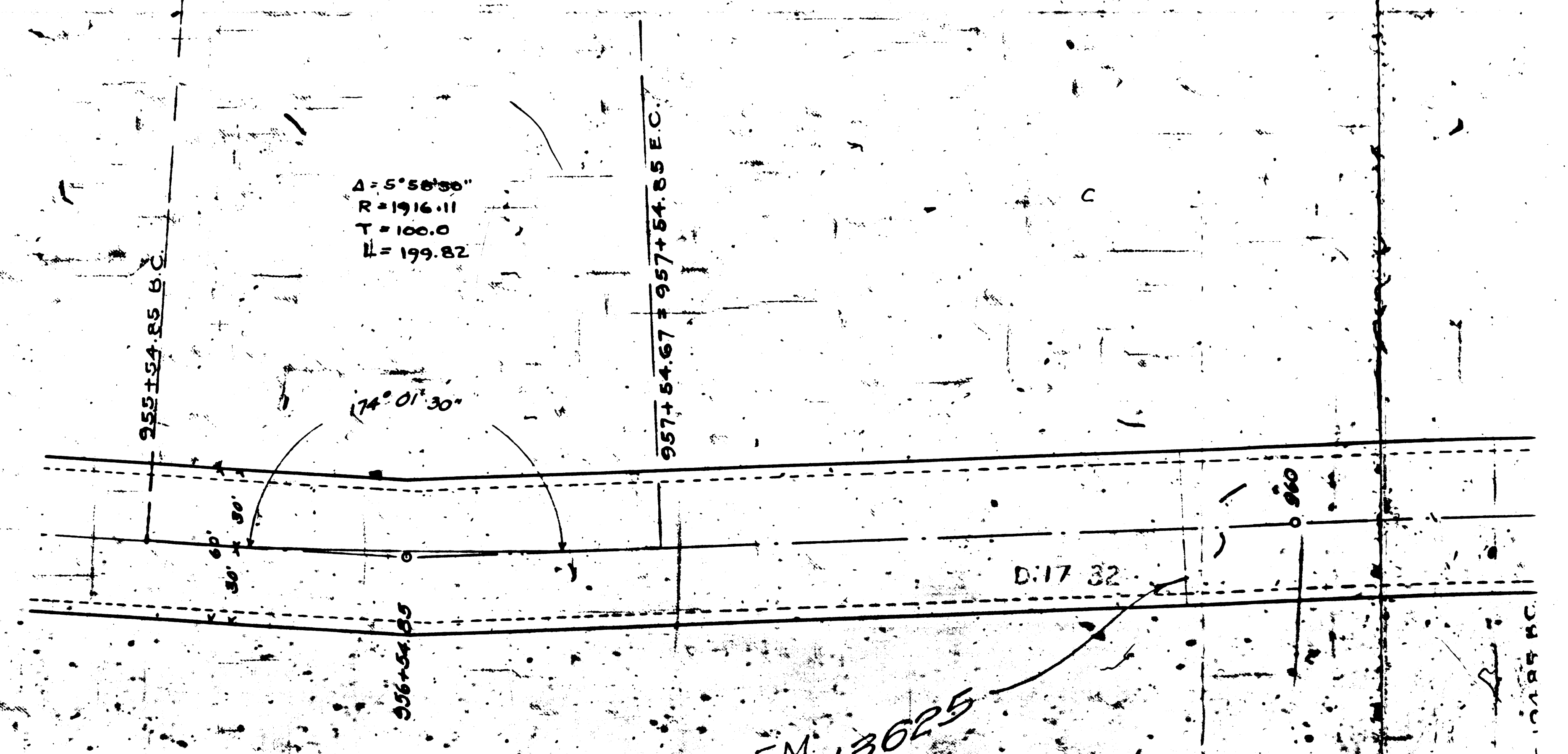
F.M. 6517803
D: 3-108
D: 1824-170

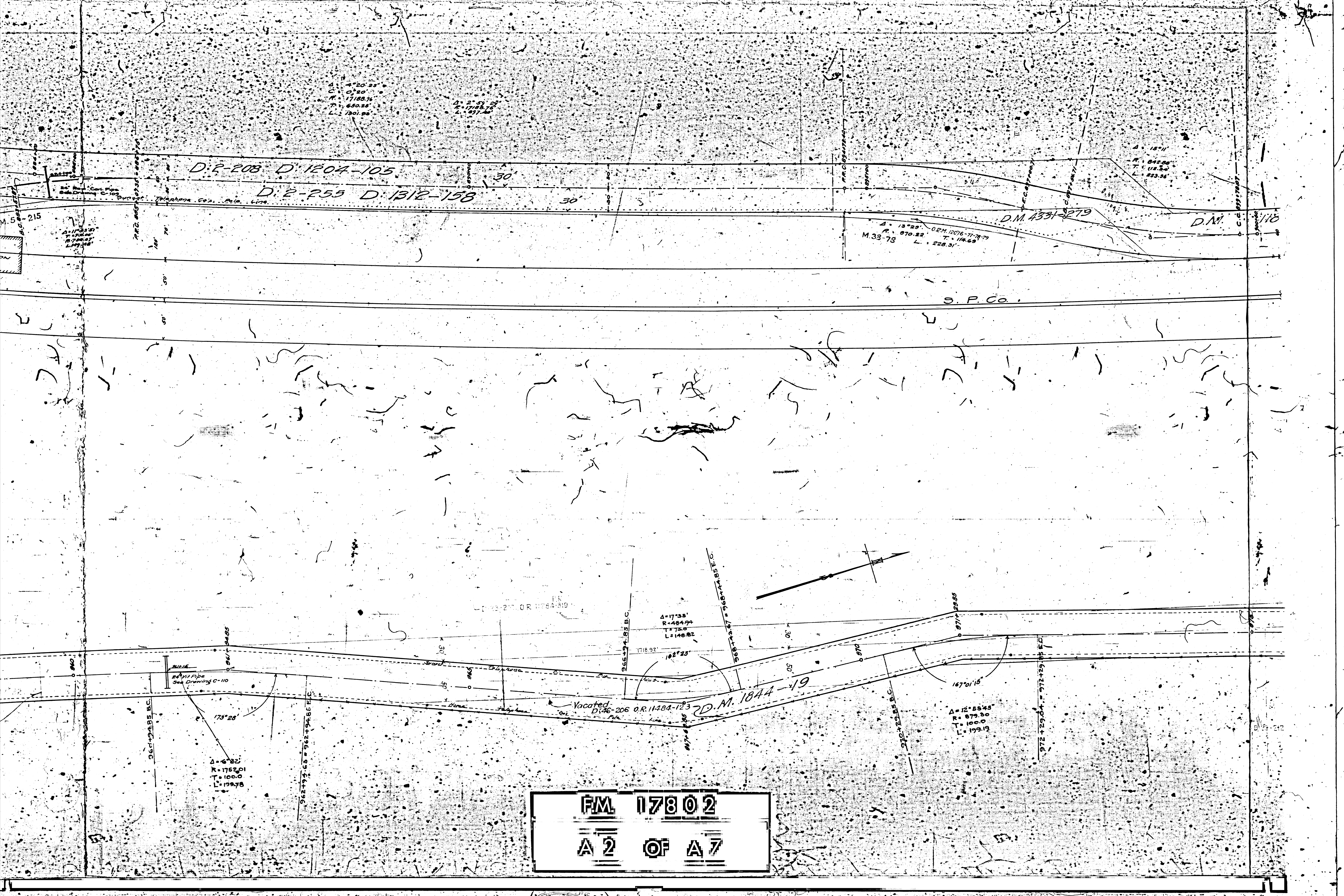
D.M. 4381-170



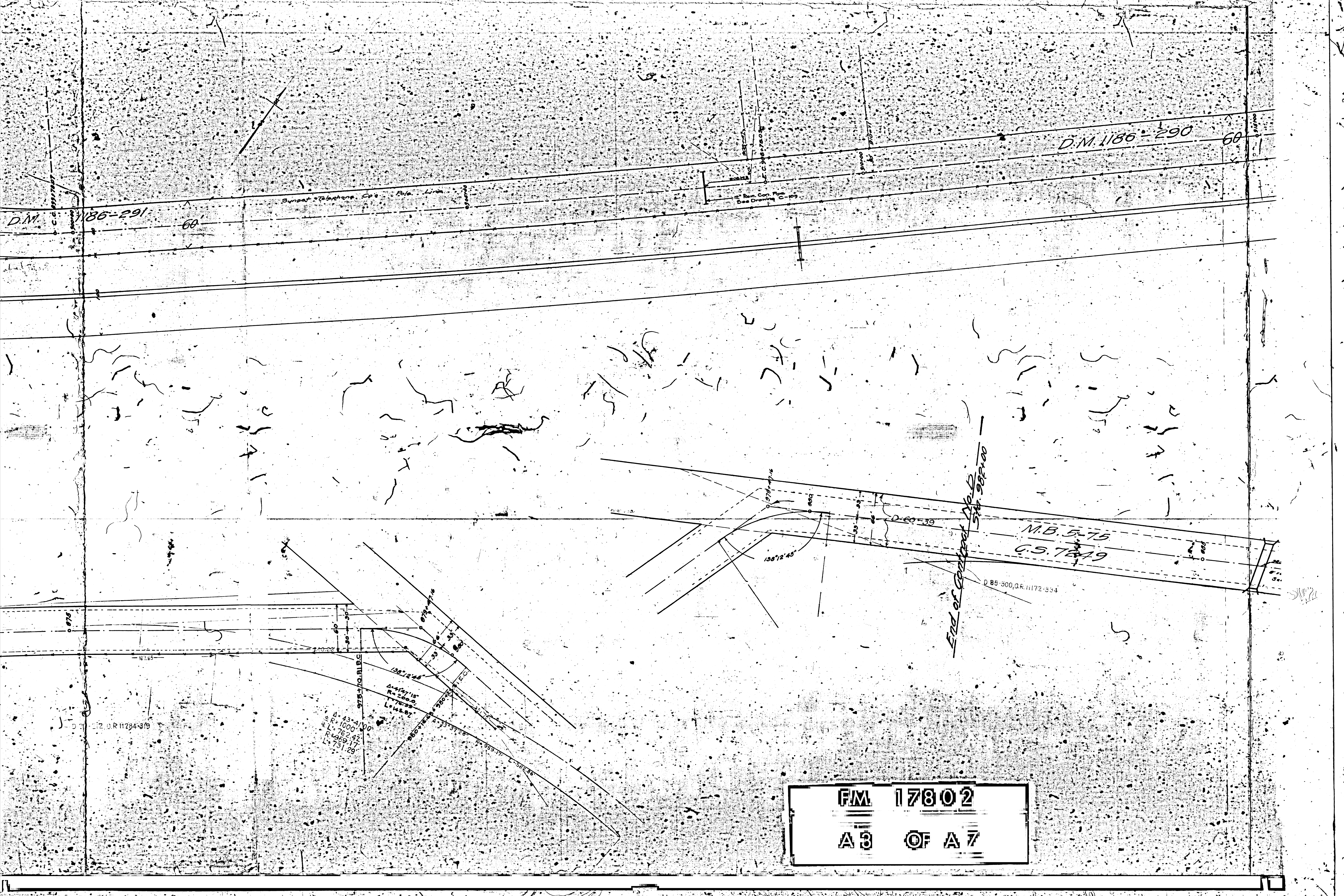
A = 5' 50.00"
R = 1916.11
T = 100.0
L = 199.82

FOR REALIGNMENT SEE F.M. 6513625





FM 17802
 A 2 OF A 7



D.M. 1186-290 60

D.M. 1186-291 60

Sunset Telephone Co. Pole Line

12" Iron Con. Pipe
See Drawing C-109

M.B. 5-75
C.S. 7649

End of Contract No. 2
Site 987100

D 85-300, O.R. 11172-334

138°12'45"

975+10.81 B.C.
44°57'15"
R=200.0
L=155.67
A=43+41.00
E.L. 1000.42
R=959.17
L=731.29

FM 17802
A 3 OF A 7

D 112, O.R. 11284-319



D.M. 1844-19

3\"/>
7\" Ren. Con. Pipe
See Drawing C-110

S.P.C.O.

290
60

3\"/>
6\" x 6\" Box Culvert
See Drawing C-110

DECLARED PUBLIC HIGHWAY D:60-39

S. 61° 03' 15\" W. - 2126.55'

Home Telephone Co. Bk. L.S.

Home Telephone Co. Bk. L.S.

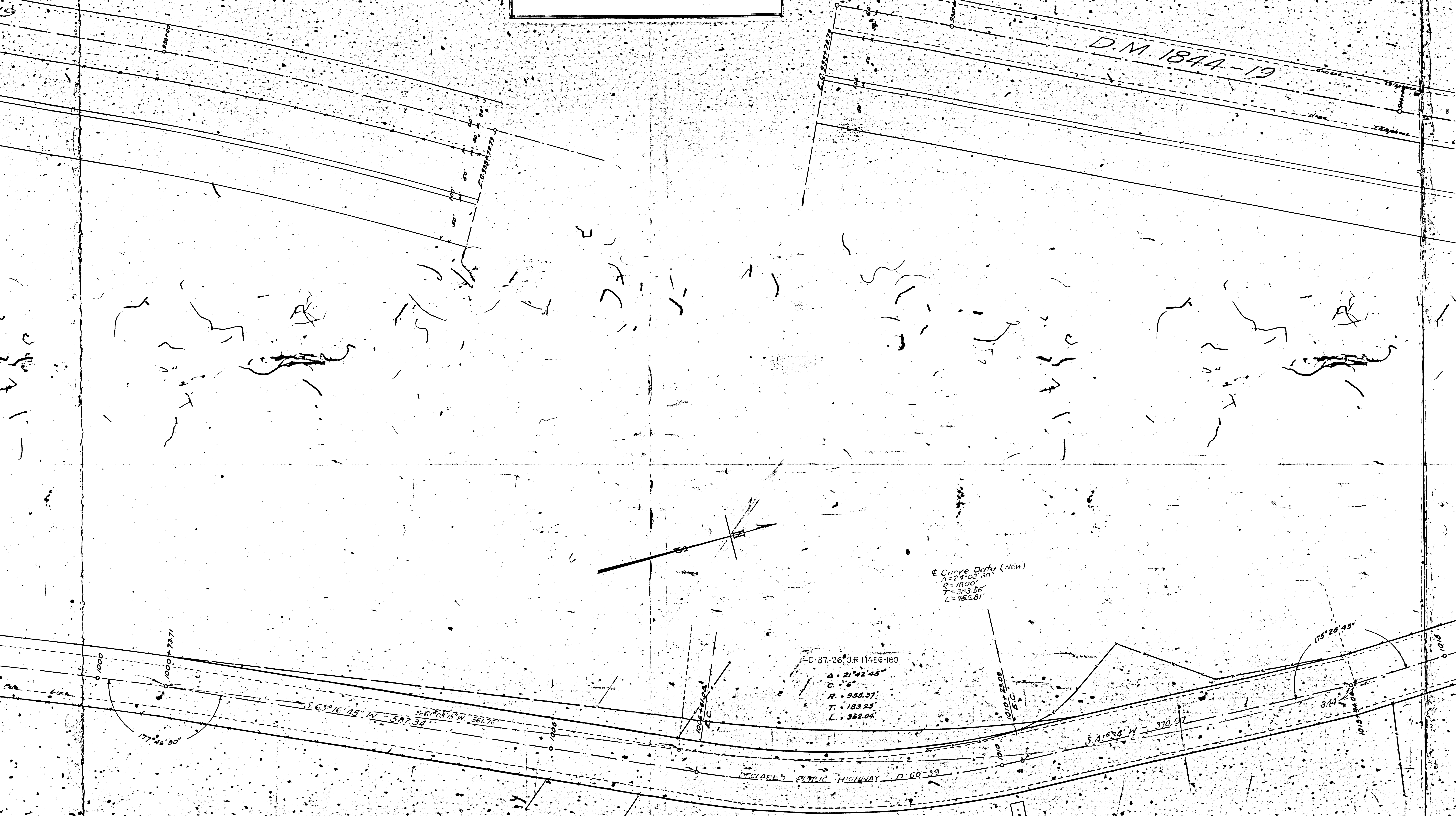
FM 17802
A 4 OF A 7

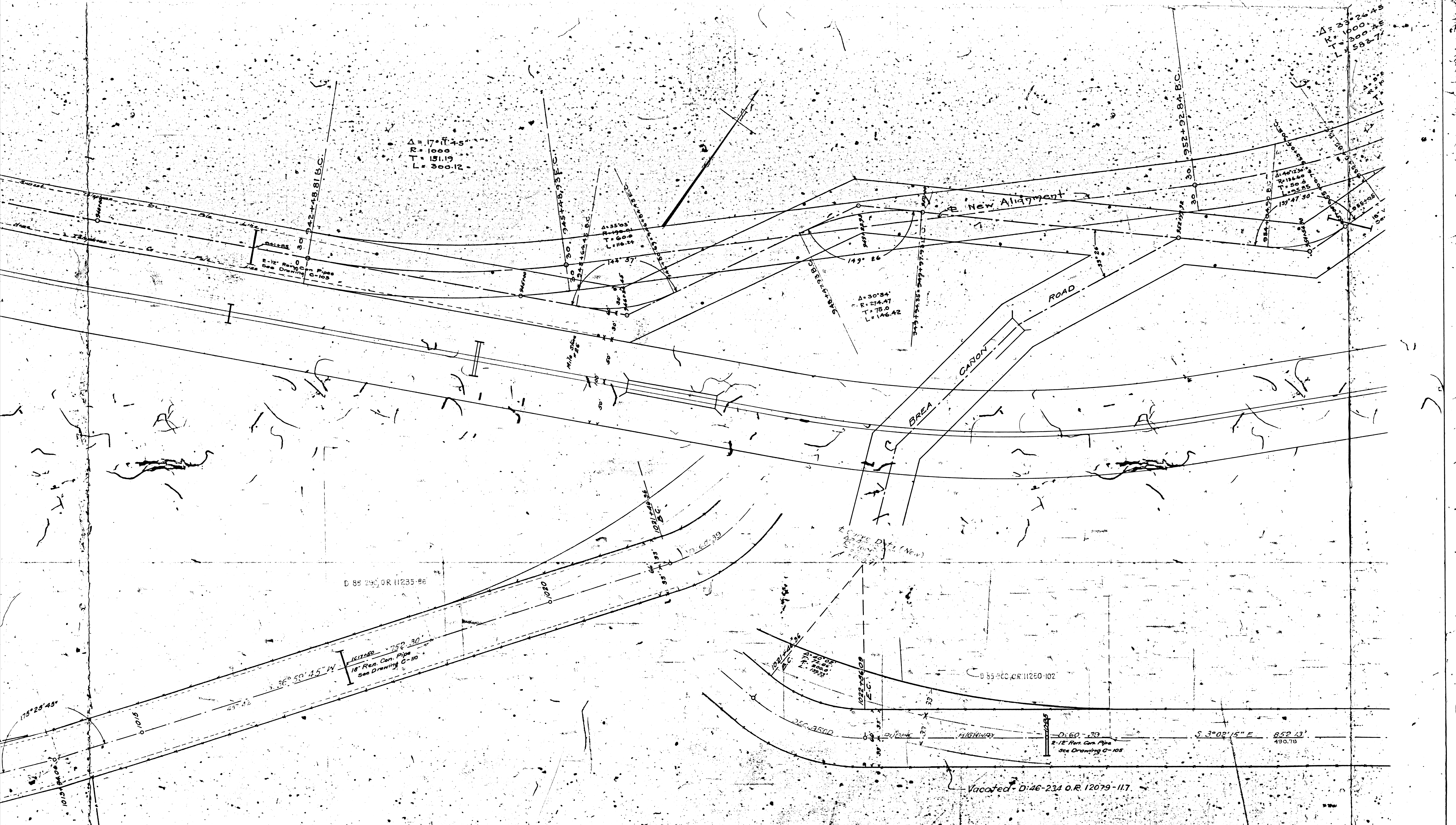
F.M. 17802
A 5 OF A 7

D.M. 1844-19

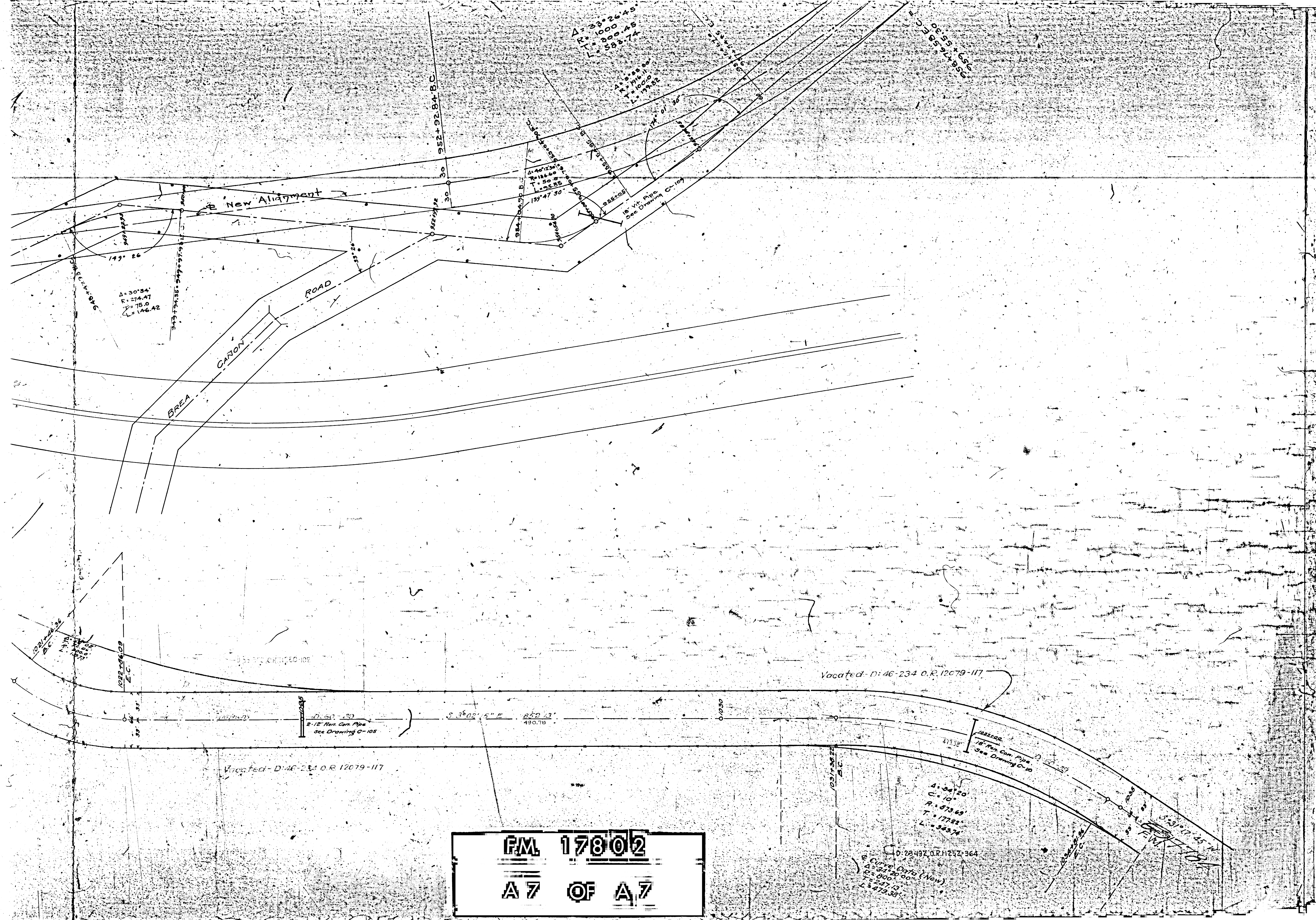
Curve Data (NEW)
 $\Delta = 24^{\circ} 23' 30''$
 $R = 1800'$
 $T = 383.36'$
 $L = 755.81'$

D: 87.26, O.R. 11456-180
 $\Delta = 21^{\circ} 42' 45''$
 $C = 16'$
 $R = 955.37'$
 $T = 183.25'$
 $L = 382.04'$





FM 117802
 A 6 OF A 7



FM 17802
A 7 OF A 7

Δ = 34° 20'
 R = 10'
 T = 17.82'
 L = 34.74'
 Δ = 34° 20' (New)
 R = 900'
 T = 247.13'
 L = 479.38'

Δ = 33° 26' 45"
 R = 1000'
 T = 300.45'
 L = 582.74'

Δ = 30° 34'
 R = 274.47'
 T = 75.0'
 L = 146.42'

Δ = 46° 12' 30"
 R = 116.66'
 T = 50.0'
 L = 95.85'

Δ = 33° 26' 45"
 R = 1000'
 T = 300.45'
 L = 582.74'

New Alignment

BREA CANYON ROAD

Vacated - D: 46-234 O.R. 12079-117

Vacated - D: 46-234 O.R. 12079-117

17'-00" ±
 2-12" Rein. Con. Pipe
 See Drawing C-105

18'-00" ±
 2-12" Rein. Con. Pipe
 See Drawing C-10