

DIVISION 16
COMPTON - CLEARWATER ROAD

EAST CITY BOUNDARY OF COMPTON TO
 OCEAN AVE. (VALLEY ROAD)

OFFICE OF
 LOS ANGELES COUNTY HIGHWAY COMMISSION
 LOS ANGELES, CAL.

SURVEYED - AUG. 1912.

FIELD WORK BY E.S.B.

PLATTED BY R.G.B.

TRACED BY S.W.J., L.R.S.

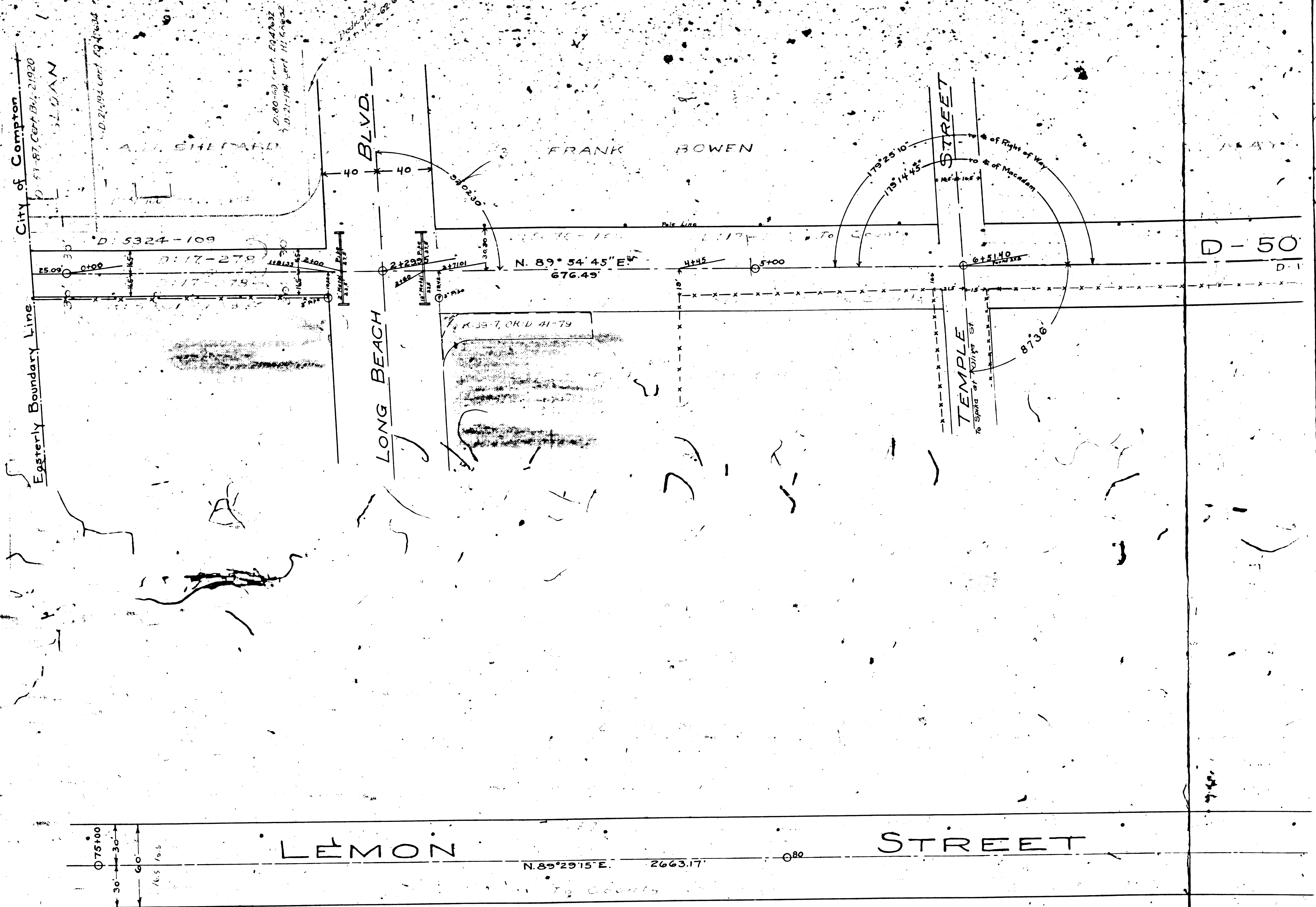
F.B.-93

A-395

COUNTY SURVEYOR'S MAP No. 7811

SCALE - 1" = 50'

APPROVED - OCT 16, 1912
R.N. O'Connell
 ASST. CHIEF ENGINEER



FM 17811
 =
A 1 OF A 6

A. A. MAYO

J. M. MAYO

T. C. MAYO

W. R. MAYO

MABEL TAYLOR

J. A. HOWE

D-5070-166
D-17-229

LEMON

ST

To County
of Macadam
of Right of Way
To County

Row of Poles & sp...

HILLER

NORTON

179°20'30"

N. 68°49'45"E. 940.72'

179°04'

Found Old 2 1/2" Stake of the
N. E. Corner of the
Tract
Temp. # 1. 2. 3. 4. 5.

FM 17811
A 2 O A 6

J. A. HOWIE

F. C. FARROW

STREET

N. 89° 19' 55" E. 5331.40'

Line of Macadam

Line of Right of Way

J. M. MAYO

J. M. MAYO

179° 39' 15"

SAN GABRIEL RIVER
NEW BRIDGE

WASHINGTON STREET

Lot 3.

Lot 4.

W. H. STONE, S. W. CORNER, Block 9,
Culiv. Cooperative Colony Tract,
M.P. 21 15 1/2.

STREET

F/M 178 11
A 3 OF A 6

J. J. MORTON

D-5070-166

D:17-229

To County

E. M. JAMES
East Half of Lot 4, Range 7, Temple and Gibson Tract,
M.R. 32-45.

See Search

STREET

N. 89°45'45" E. 5152.87'

AVE.

MICHIGAN
GARFIELD

350' Rec.

150' Rec.

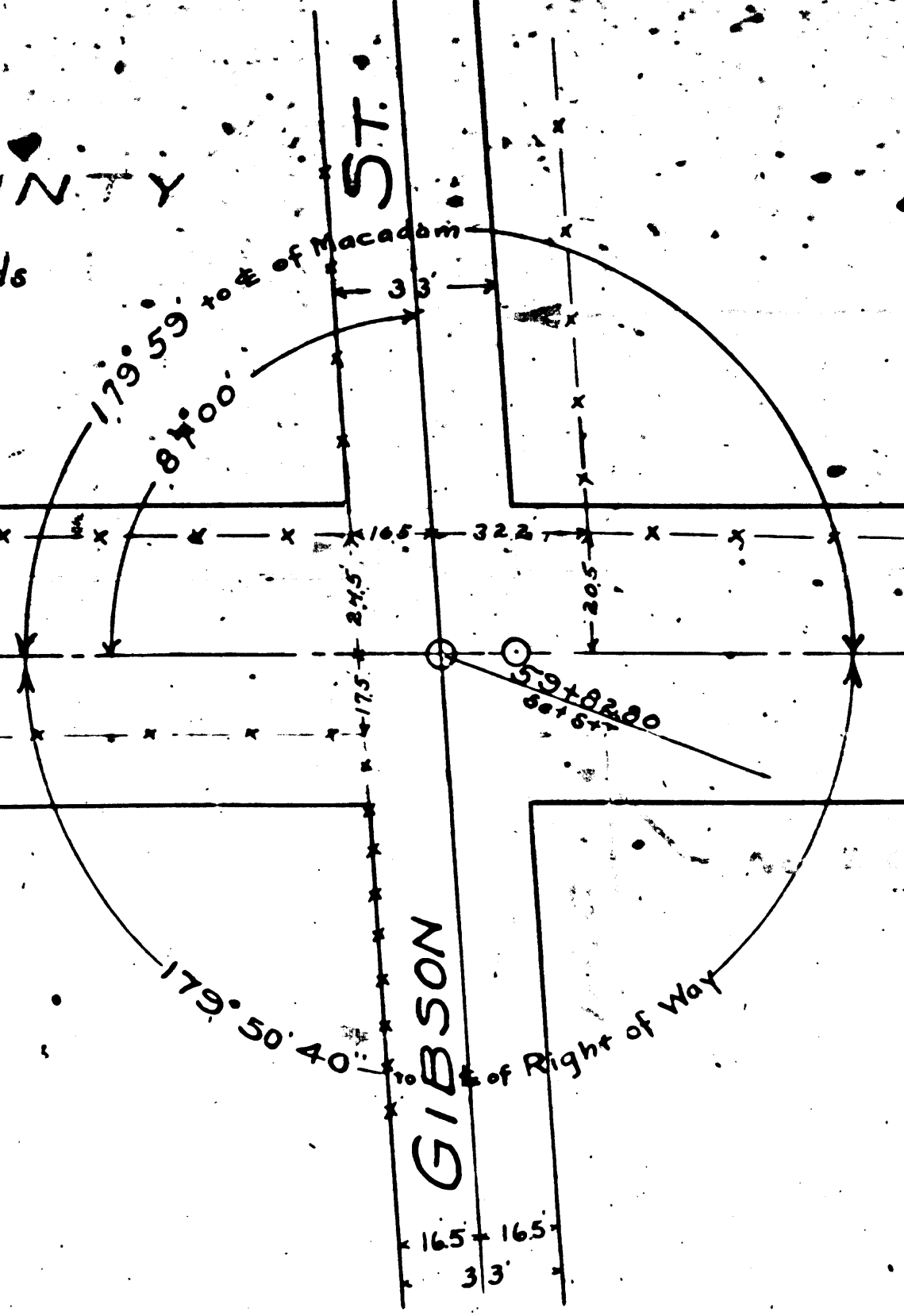
80'

MINNEAPOLIS AVE.

F.M. 17811

A 4 OF A 6

LA COUNTY
School Grounds



To County
E of Macadam
E of Right of Way

D: 17-229 D: 5070-166

LEMON

D: 5070-166 D: 17-229 To County

66

110

WILLIAMS

Hotel

MINNESOTA AVE.

ILLINOIS AVE.

OHIO AVE.

VERMONT AVE.

FM 178 11
A 5 OF A 6

W. H. CARPENTER (H. RS OF)

LEMON

STREET

0-17-265 To County

N. 89° 29' 15" E. 2463.17'

PROCTER

Hotel

Store

VERMONT AVE.

COLORADO AVE.

OCEAN VALLEY

AVE ROAD

To go from 333 1/2 E. Cor. State St.

FM 1178 11

A 6 OF A 6