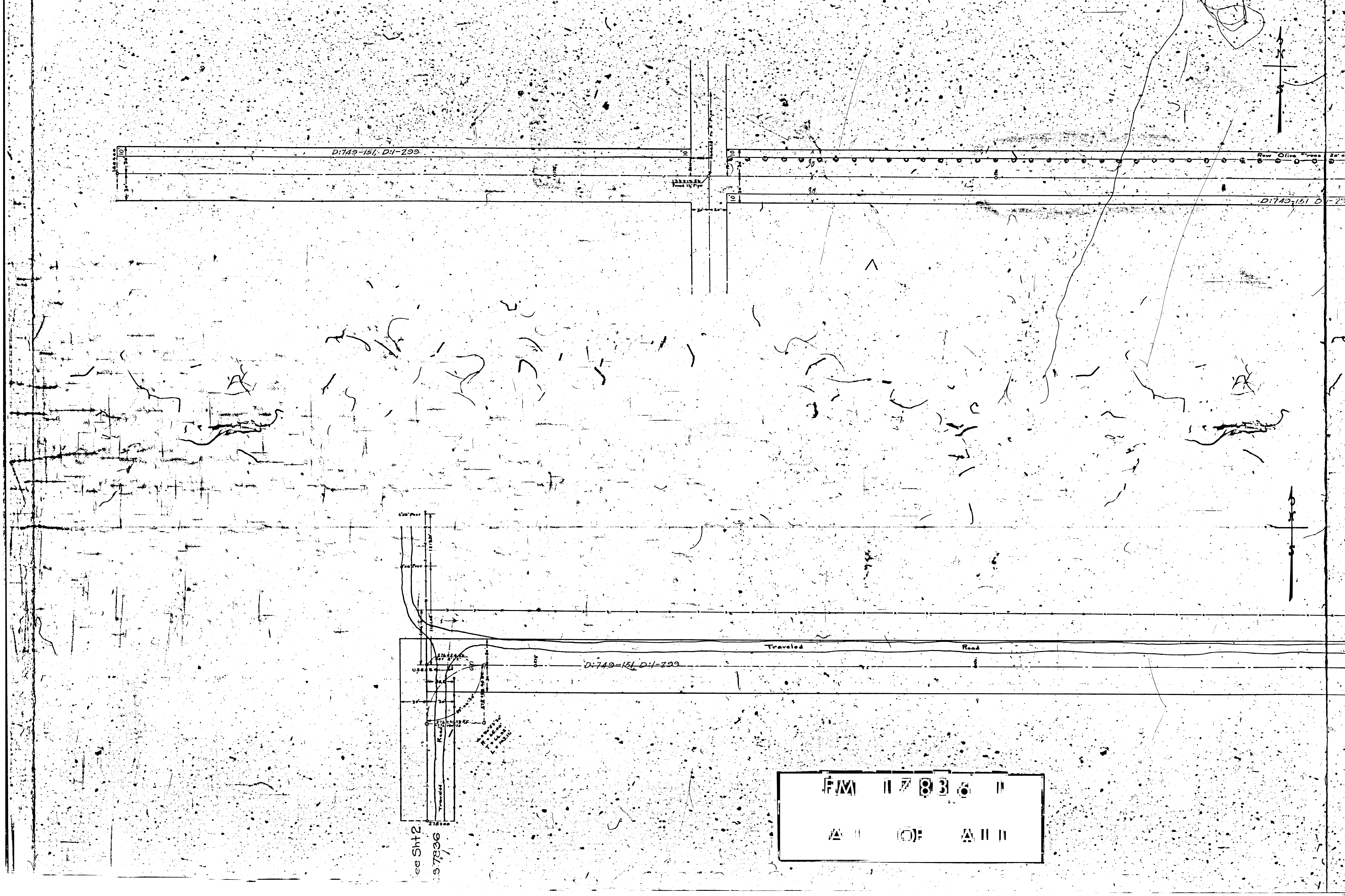
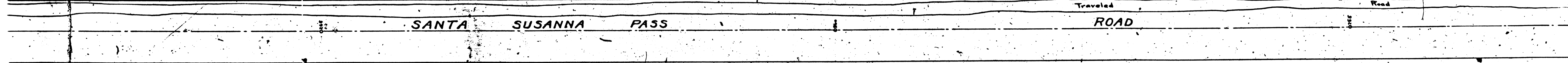
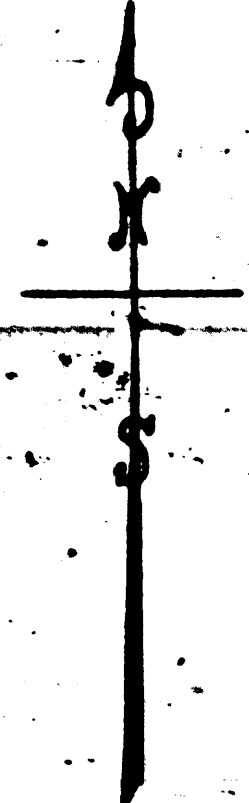
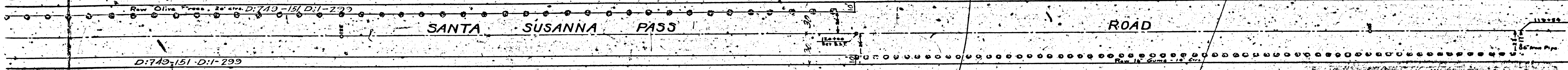


see SHT 2
5.7836

F.M. 17836
A II (O) A II





FM 1783611
A2 OI A111



D:749-151 D:1-203

20
20

30
20

102.254
80' Iron Street Pipe

High Cypress Hedge

Travelled

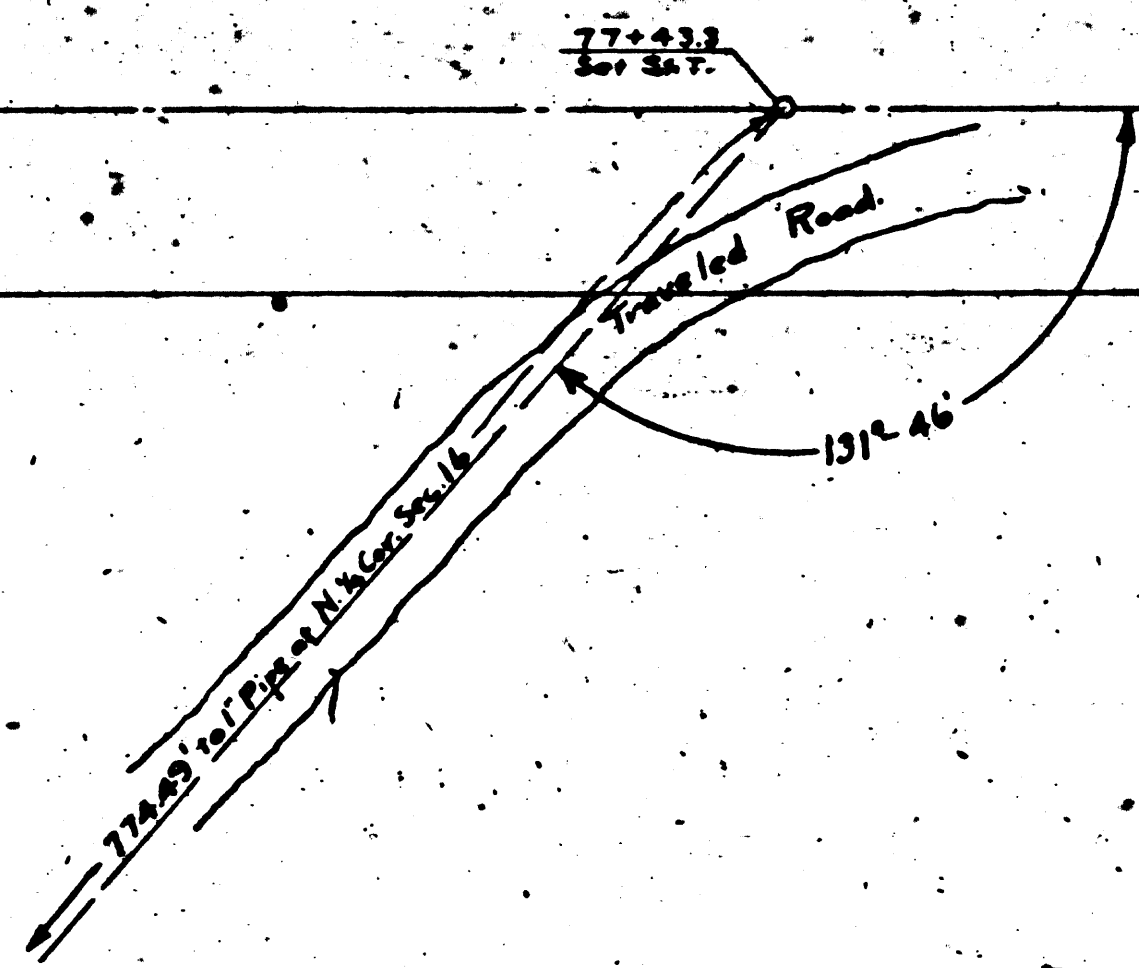
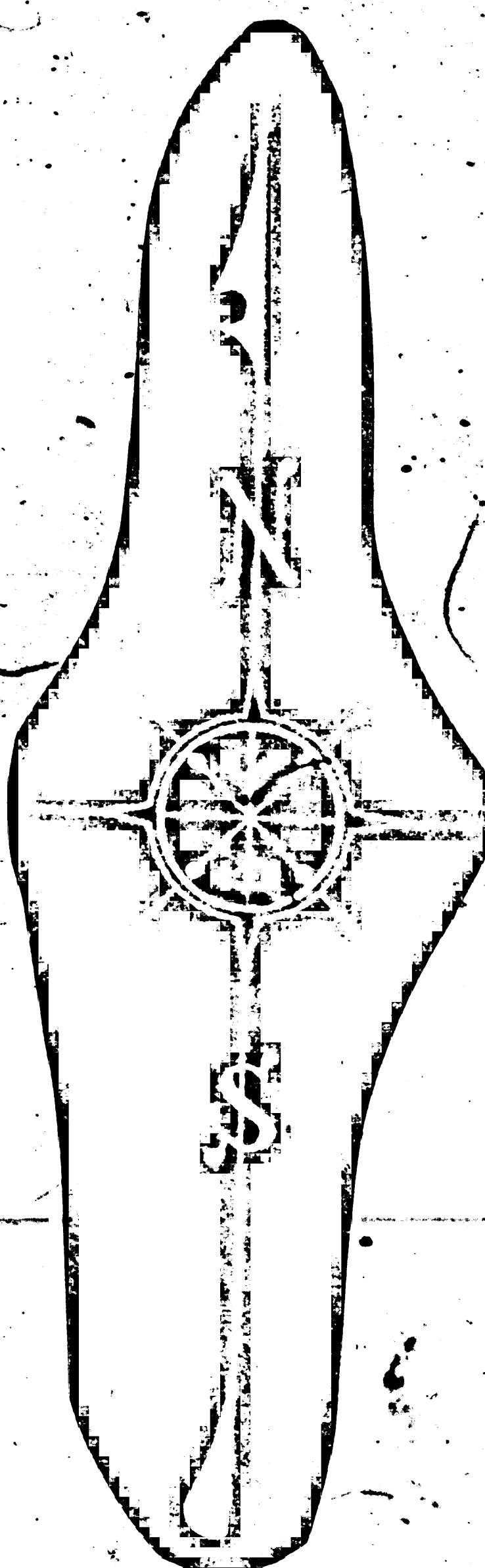
Road

F.M. 1783 61 II

A 31 OI A 11 II

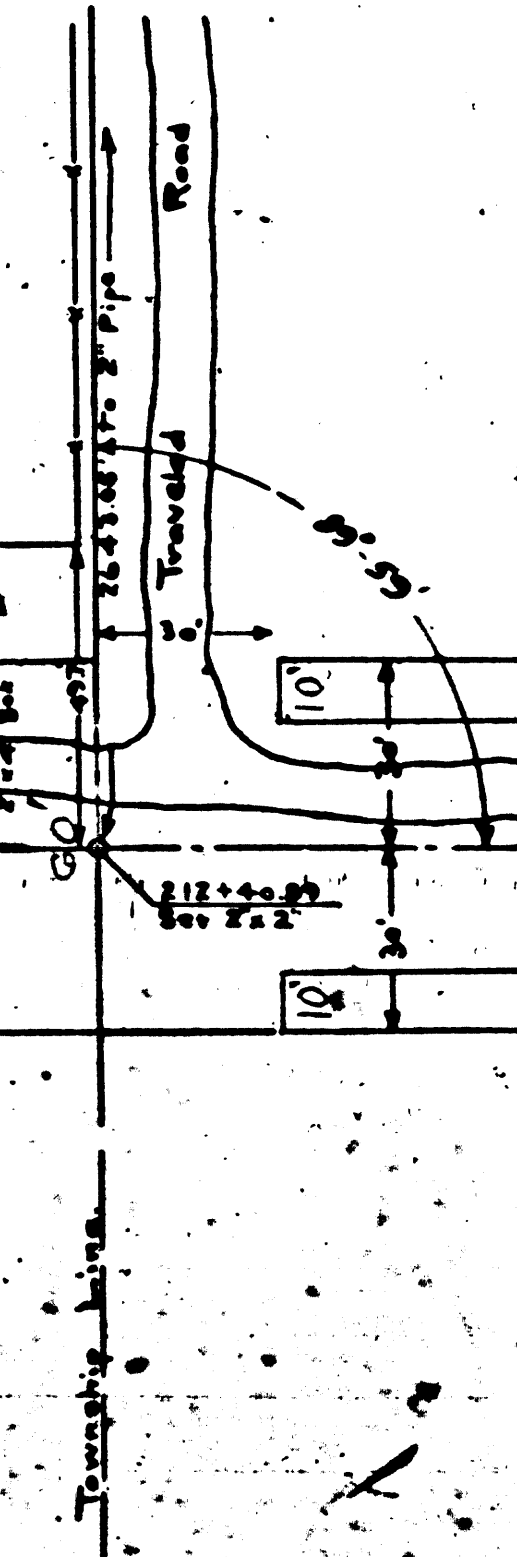
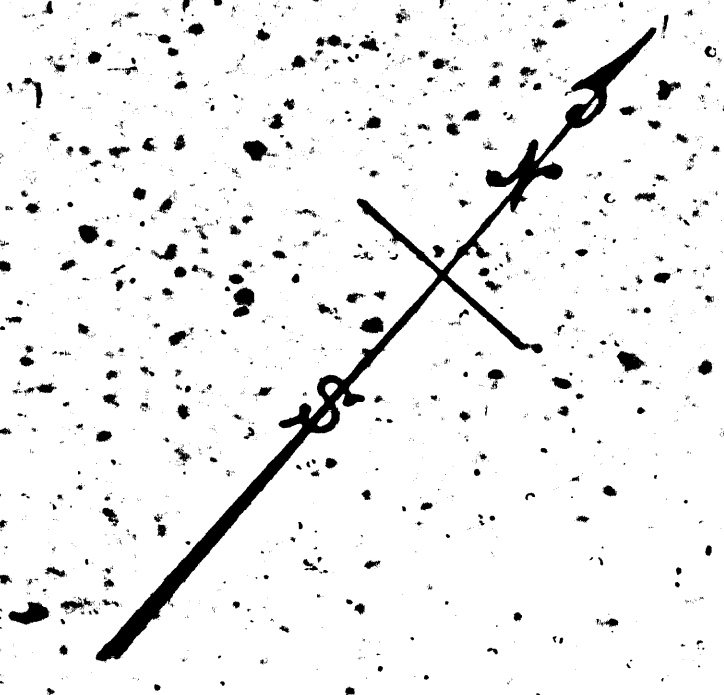
SANTA SUSANNA PASS

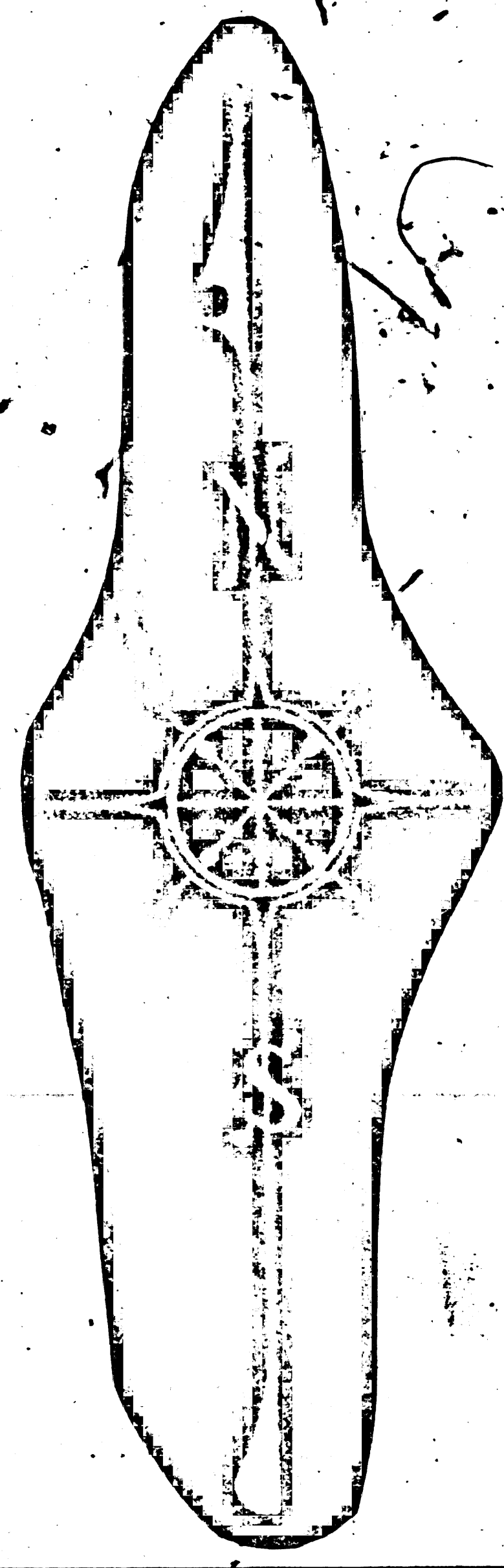
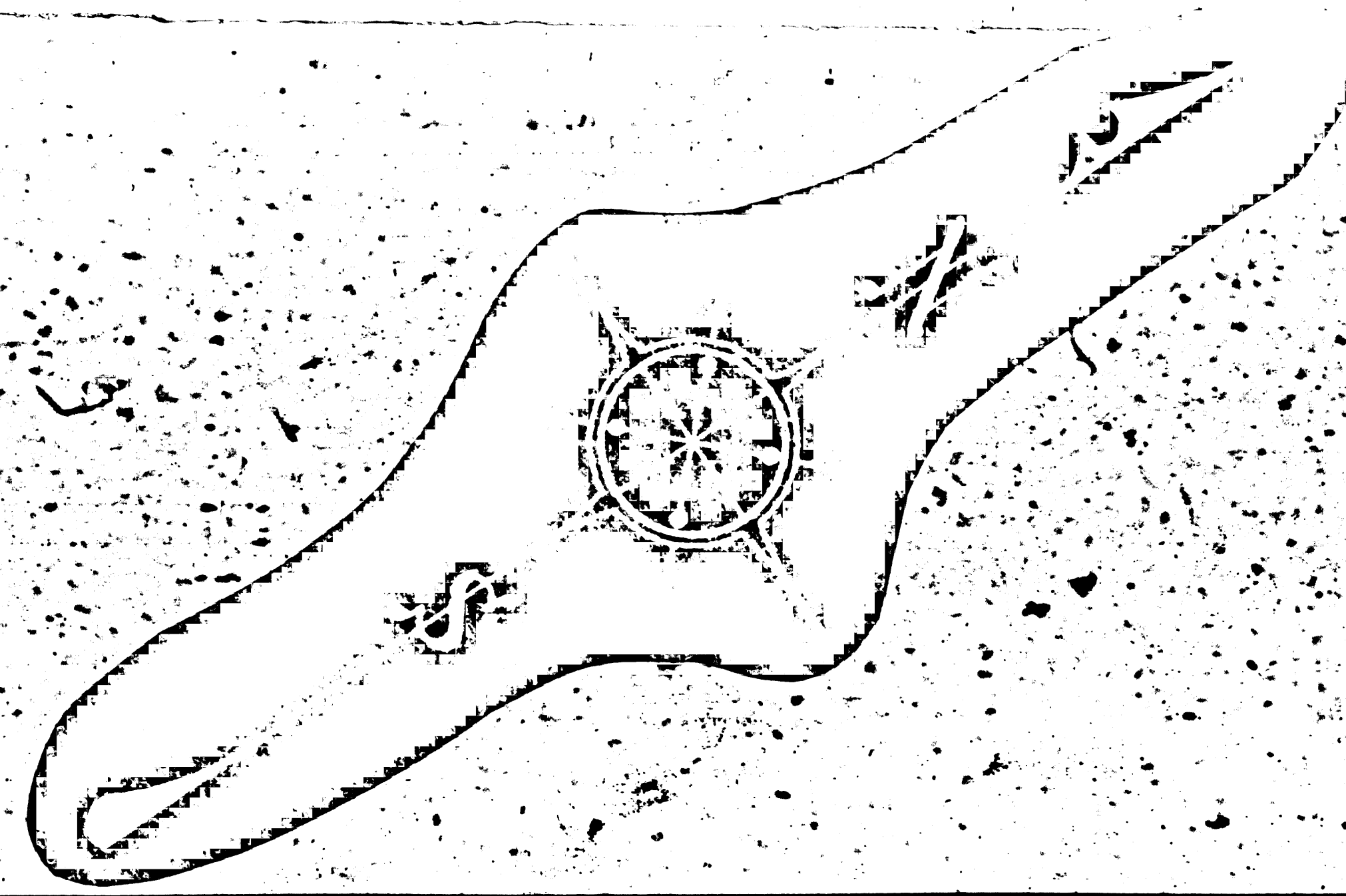
ROAD



SANTA SUSANNA PASS

F.M. 17836
A 5 OF A 11





ROAD

D:749-151 D:1-299

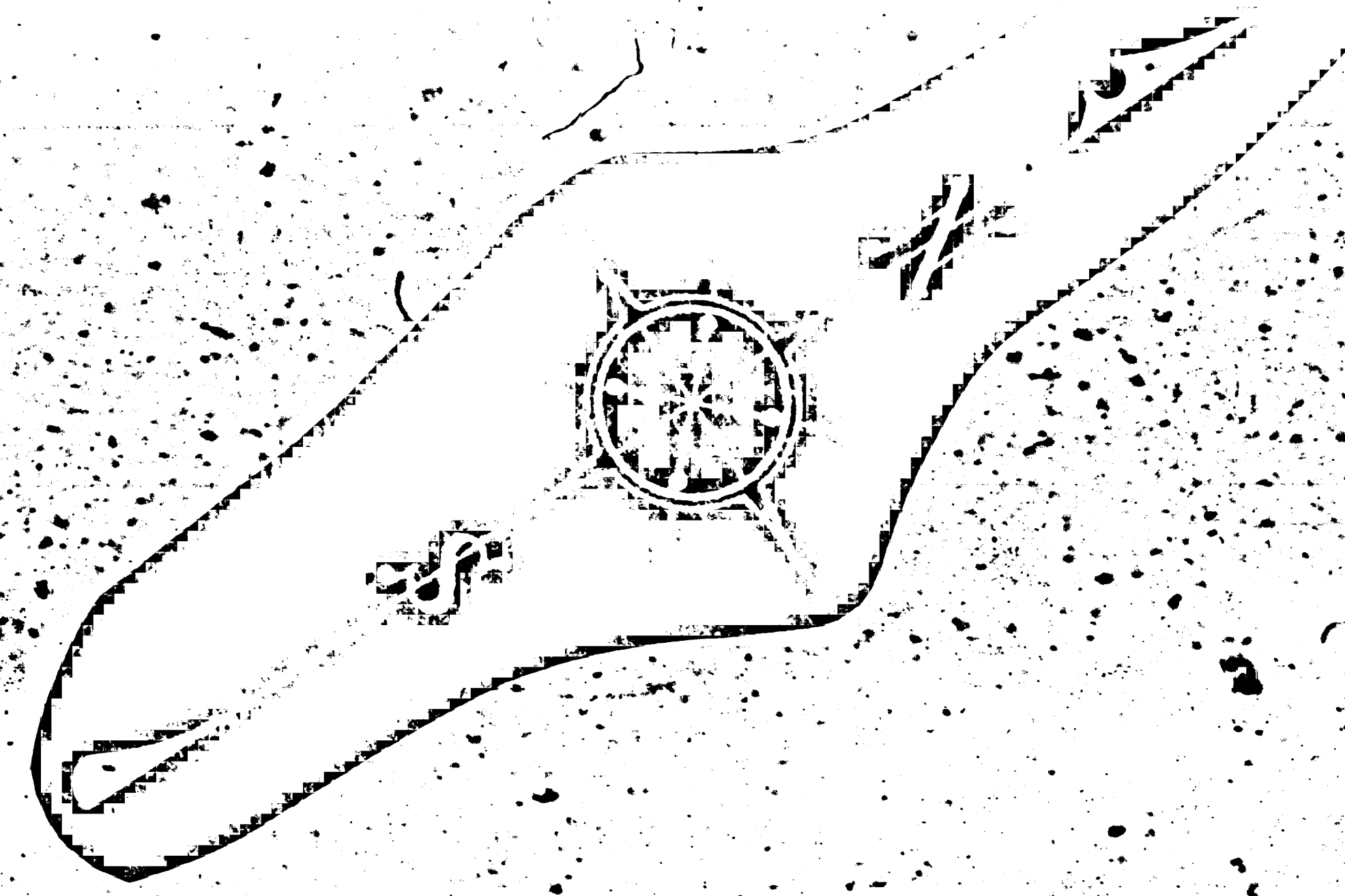
D:749-151 D:1-299

CHATS V

F/M 117836 II
A 1/6 OF A 11

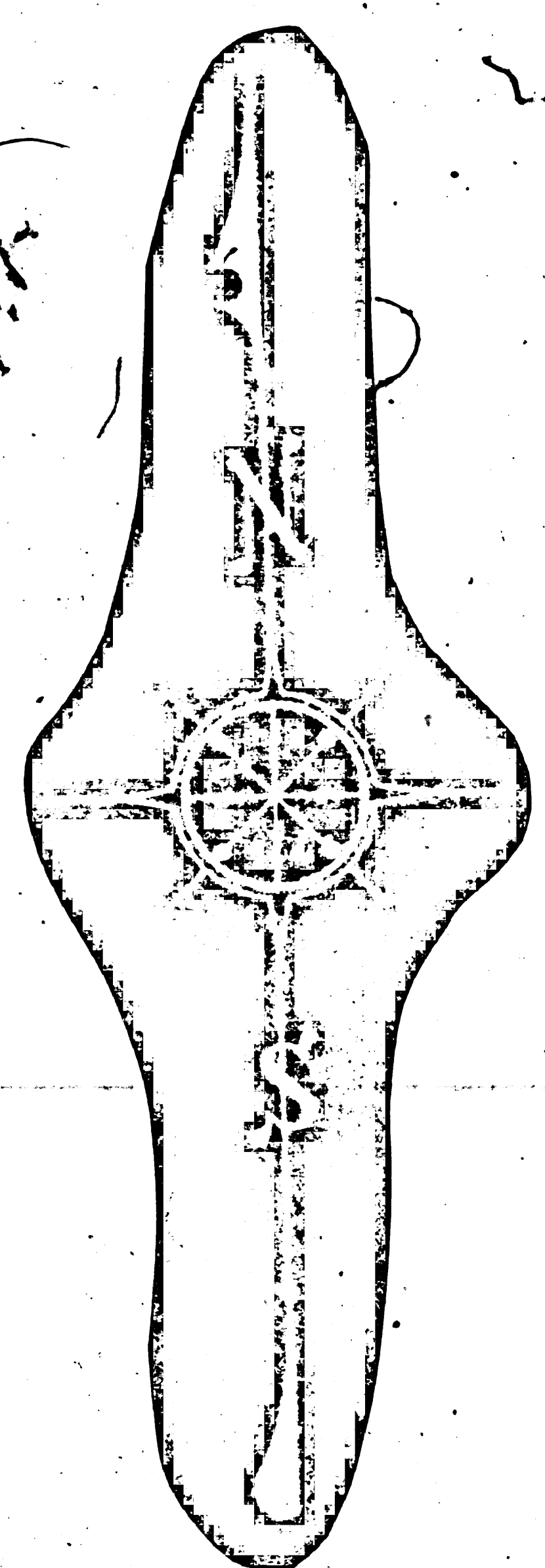
PETT AVE

CRD. 122, 124
CITY L.A.



SANTA SUSANNA PASS

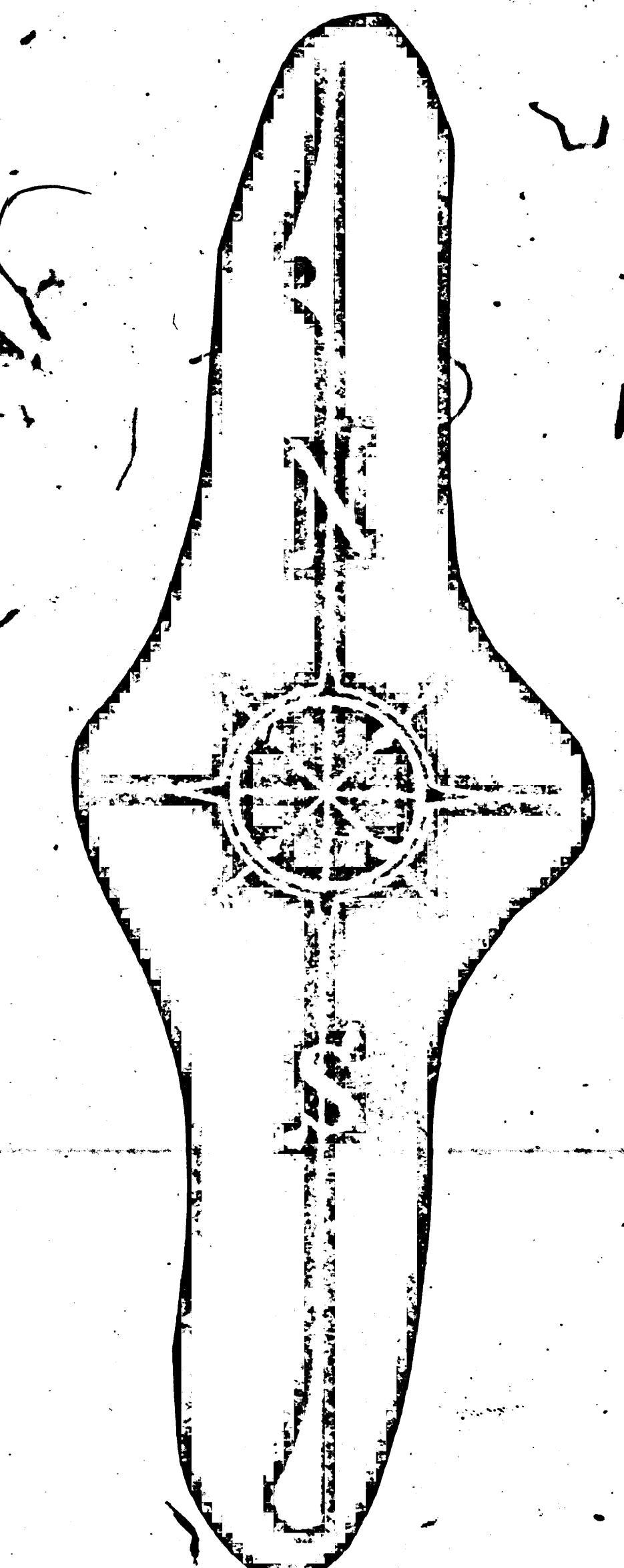
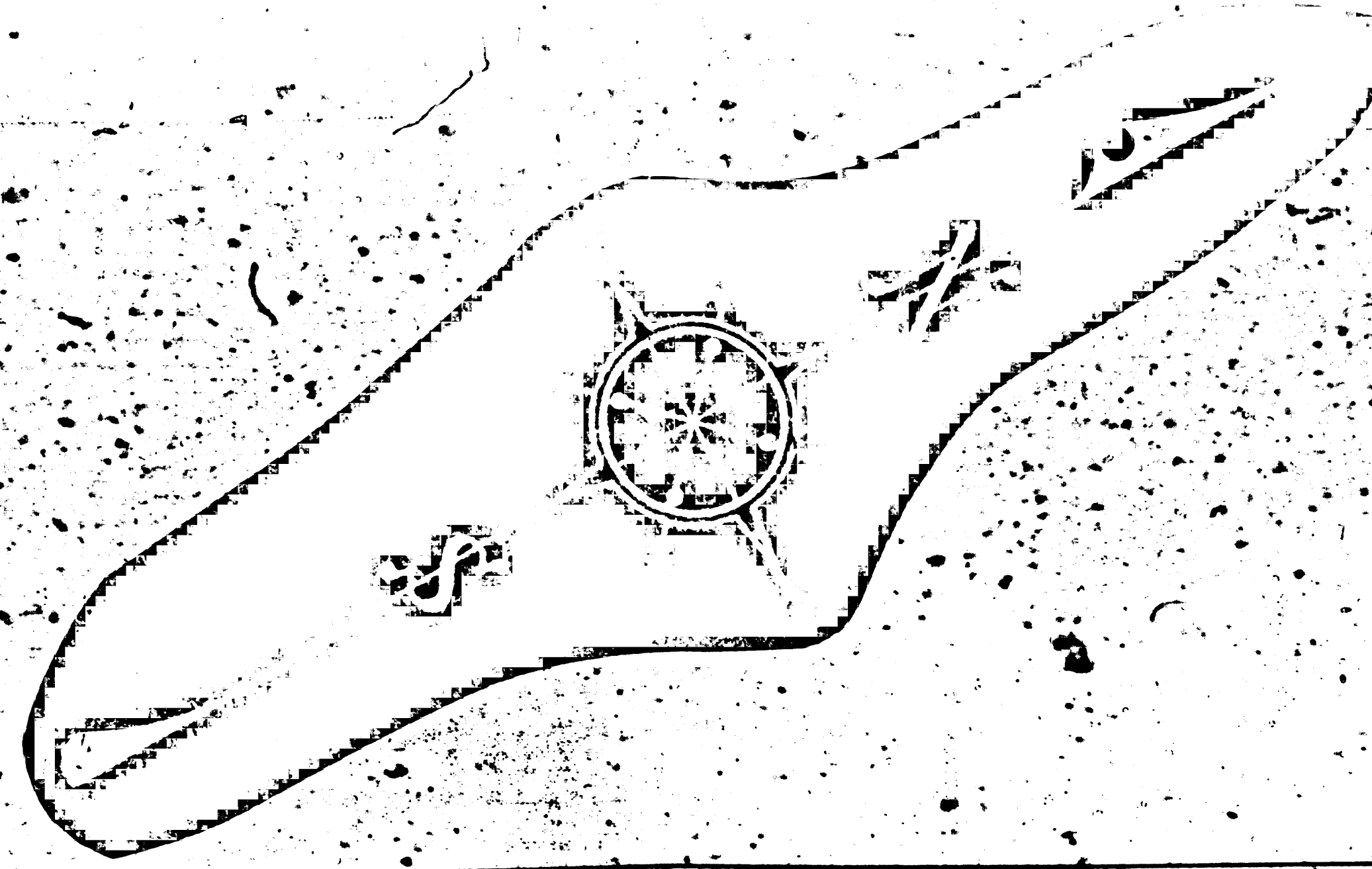
ROAD



SANTA SUSANNA PASS
CHATS WORTH ST.

ROAD

FM 17836 II
A 7 OF A 11



High water washes over road

Stream

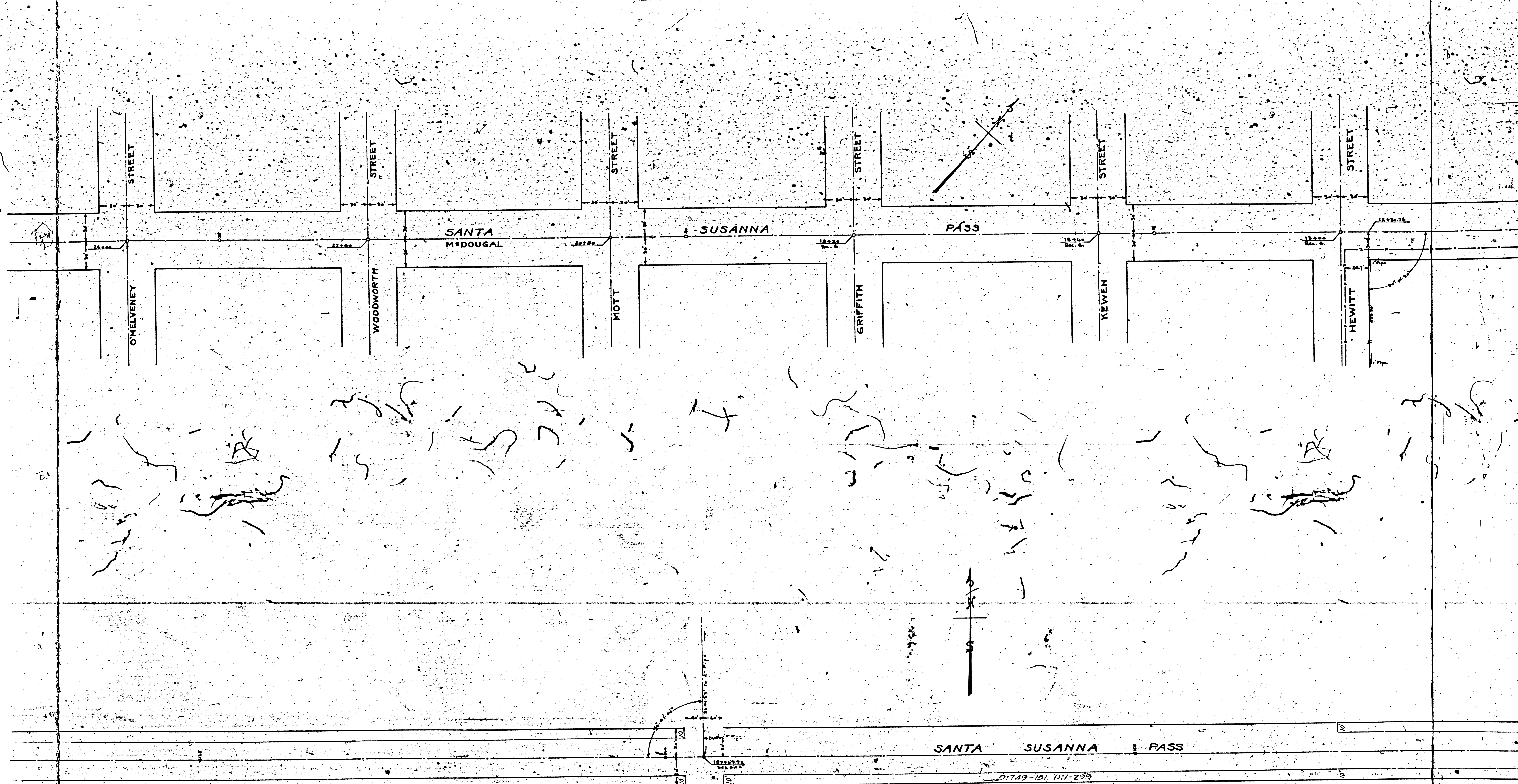
D:749-151, D:1-299

D:240-151, D:1-299

Wash

F	M	1	7	8	3	6	1
A	8	0	A	11	11		

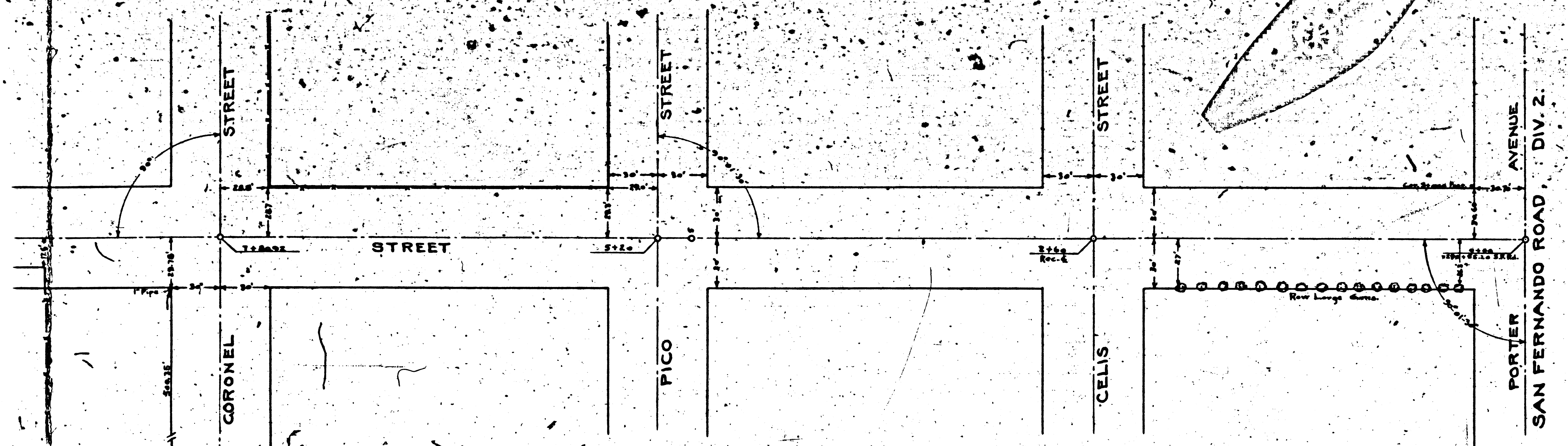
STREET
OMLEVENEY



F M 1783 6 II
A 9 OF A 11 II

SANTA SUSANNA PASS

D.749-151 D.1-299

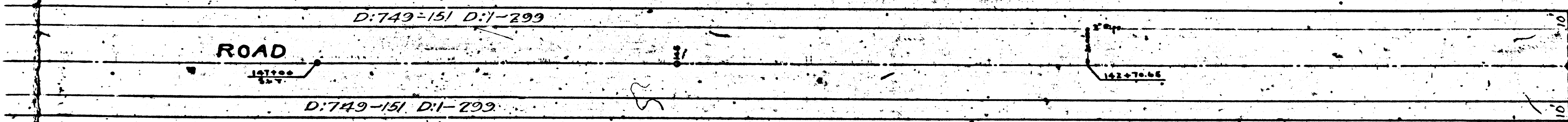


LOS ANGELES COUNTY HIGHWAY COMMISSION
 DIV. I.
SANTA SUSANNA PASS ROAD
 FROM STA. 0+00 (SAN FERNANDO ROAD) TO STA. 2+00.
 SCALE - 1" = 50' FIELD BOOK 1811

A-300

Approved June 15, 1912.
J. J. [Signature]
 Chief Engineer

Note: Santa Susanna Pass Rd
 deduced 60 wide with
 10' reserve on each
 side for walks
 See C. Sur. D-17299
 8-D-2-20
 Also D-1737
 J.E.T.



FM 17836
 A III OF A III