

See Sht 3
STREET
EN
17836

End. Sec. "1.
Sta 553+07.00

FOURTH

STREET

FIFTH

DEVONSHIRE SANTA SUSANNA PASS

F/M 11 7 8 3 6 2
A 11 (O) A 11 (O)

ANTA SUSANNA PASS

ROAD

See Plat
Book 1
See Plat
Book 1

FIFTH STREET

ROAD

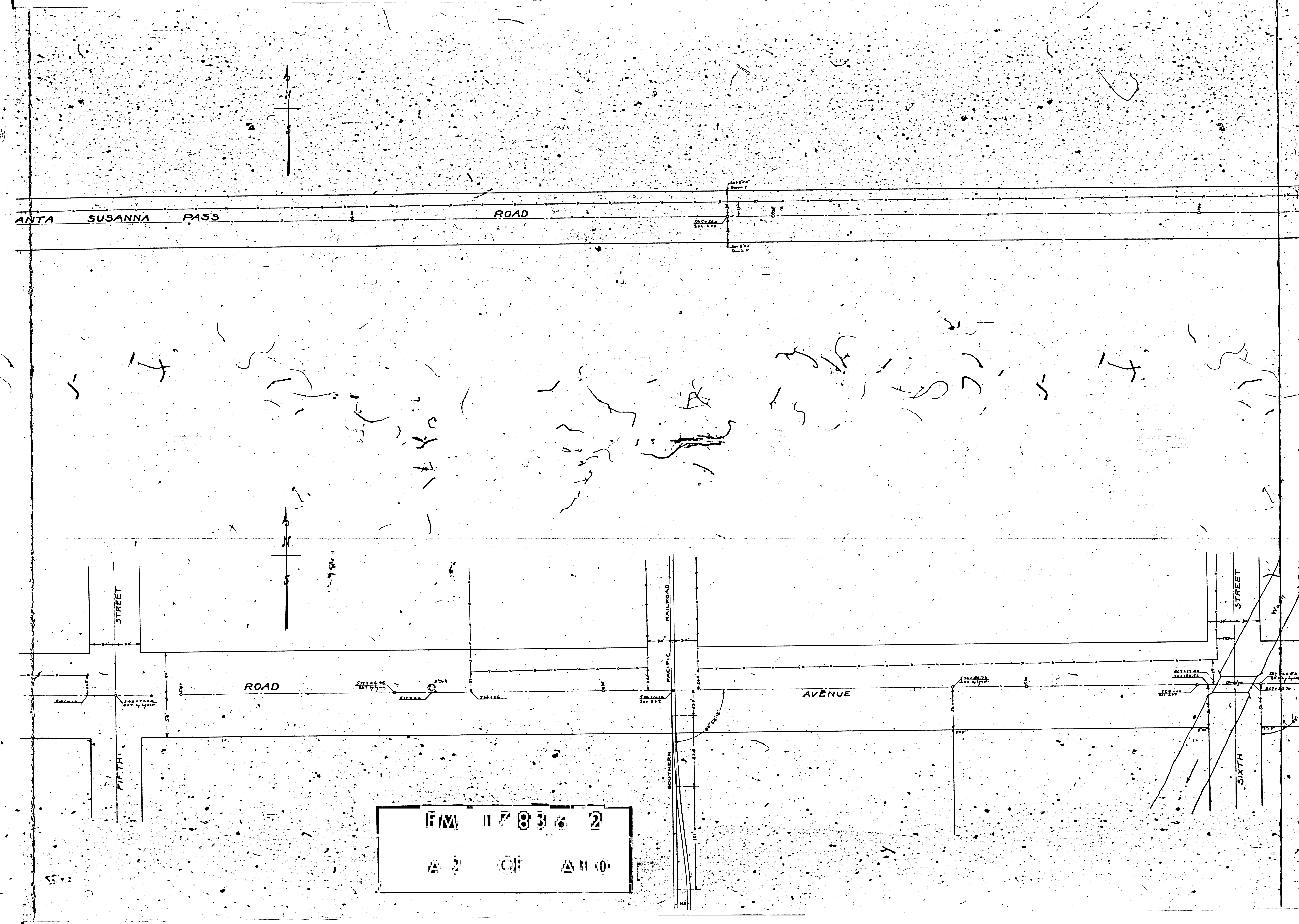
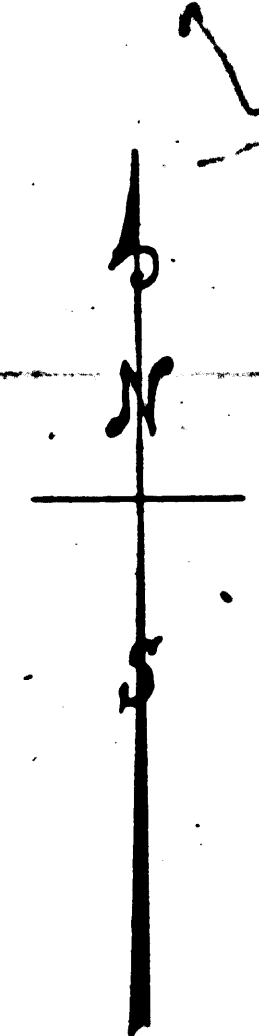
PACIFIC RAILROAD

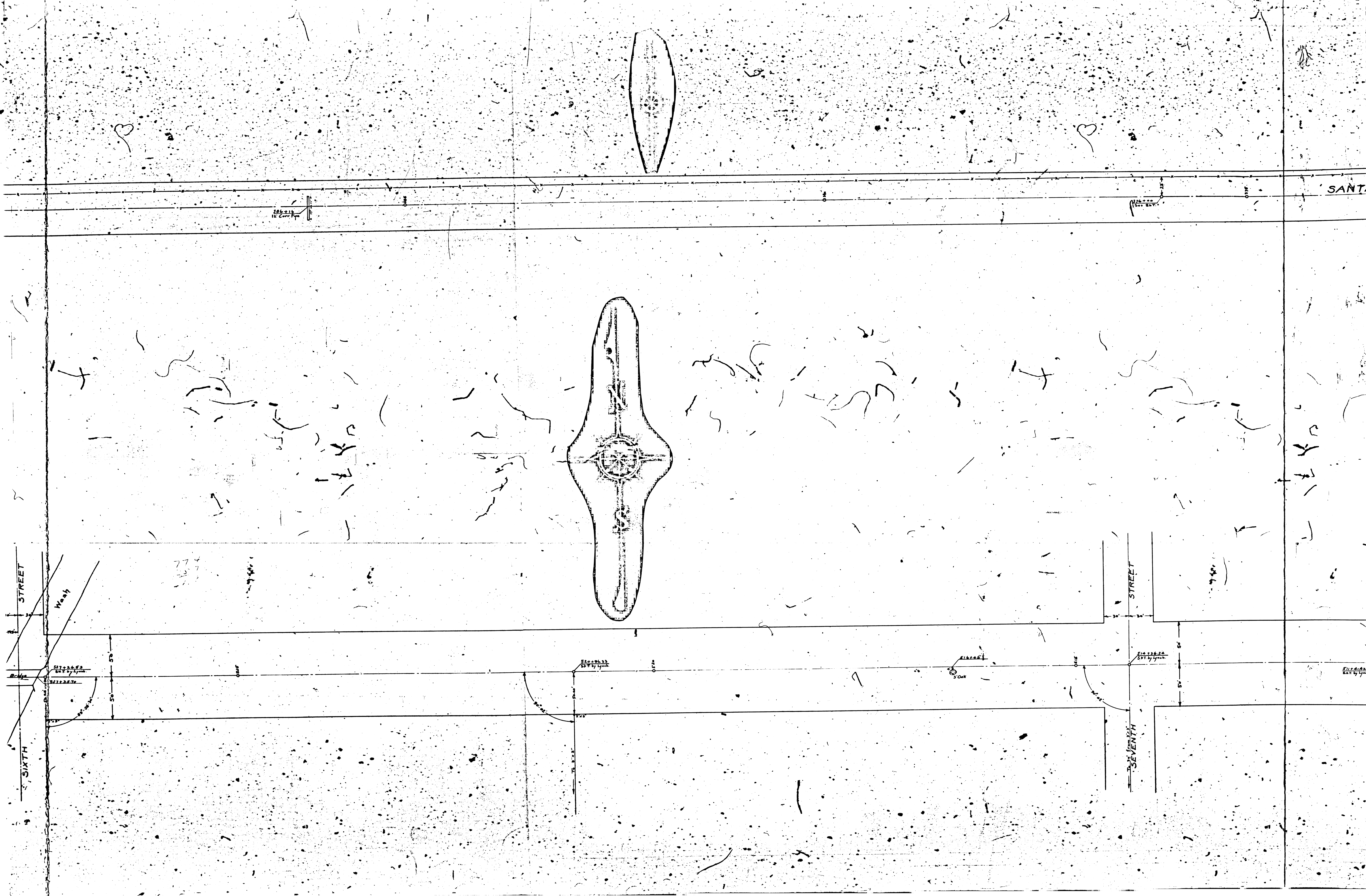
AVENUE

SIXTH STREET

SIXTH STREET

F/M 117836 2
A 2 OF A 110





SIXTH STREET

Wash

SEVENTH STREET

SANT

50

60

217226.62
217226.70

217226.53
217226.53

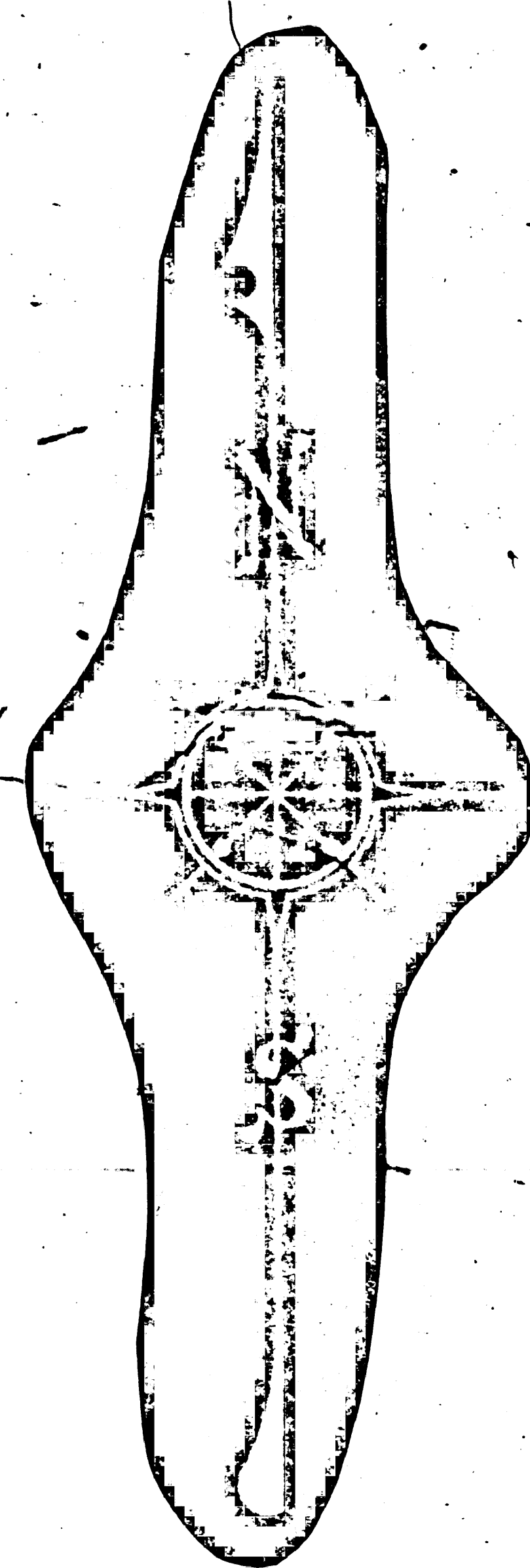
217226.25
217226.25

217226.44
217226.44



SANTA SUSANNA PASS

ROAD



SANTA SUSANNA PASS

ROAD
DEVONSHIRE

STREET

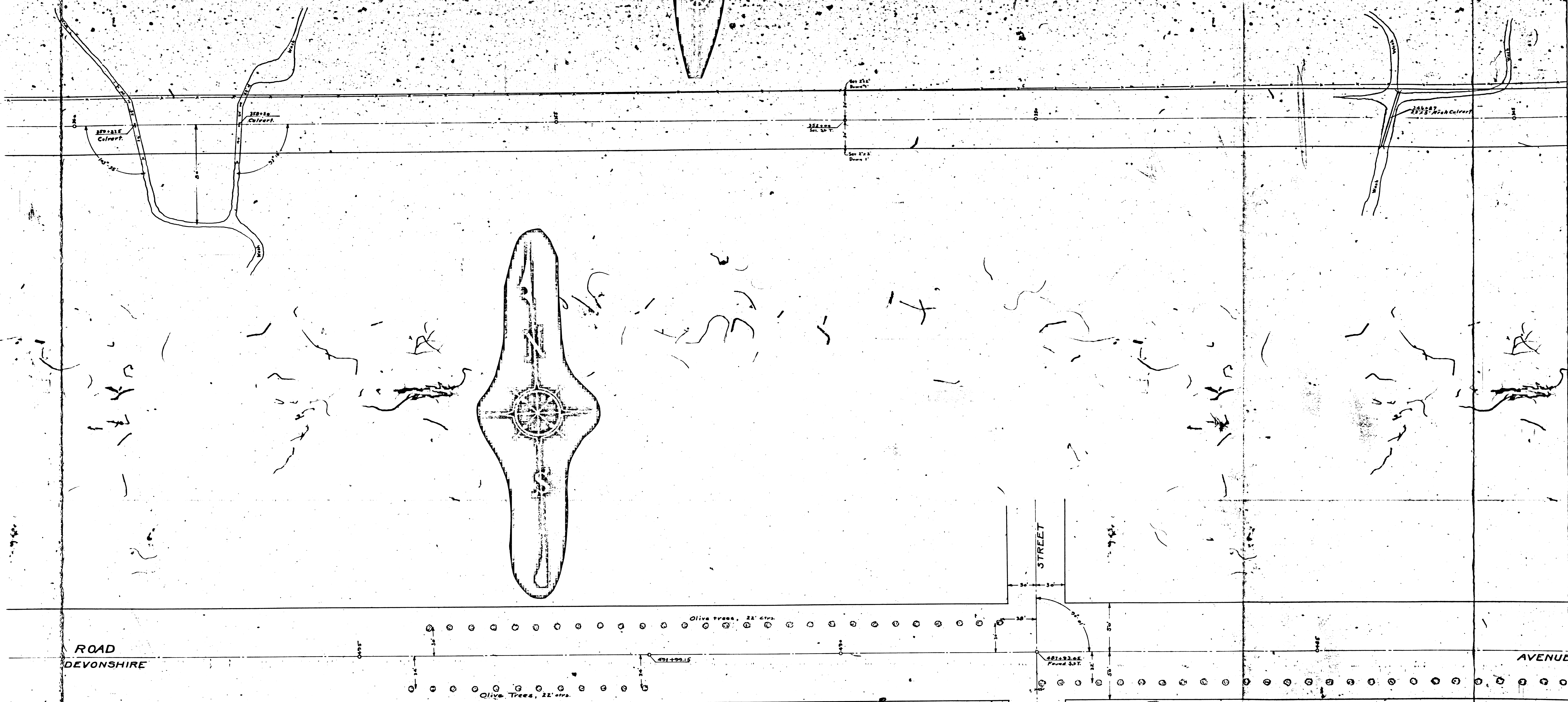
EIGHTH

F/M 117830 2

A 4 OF A 110

3

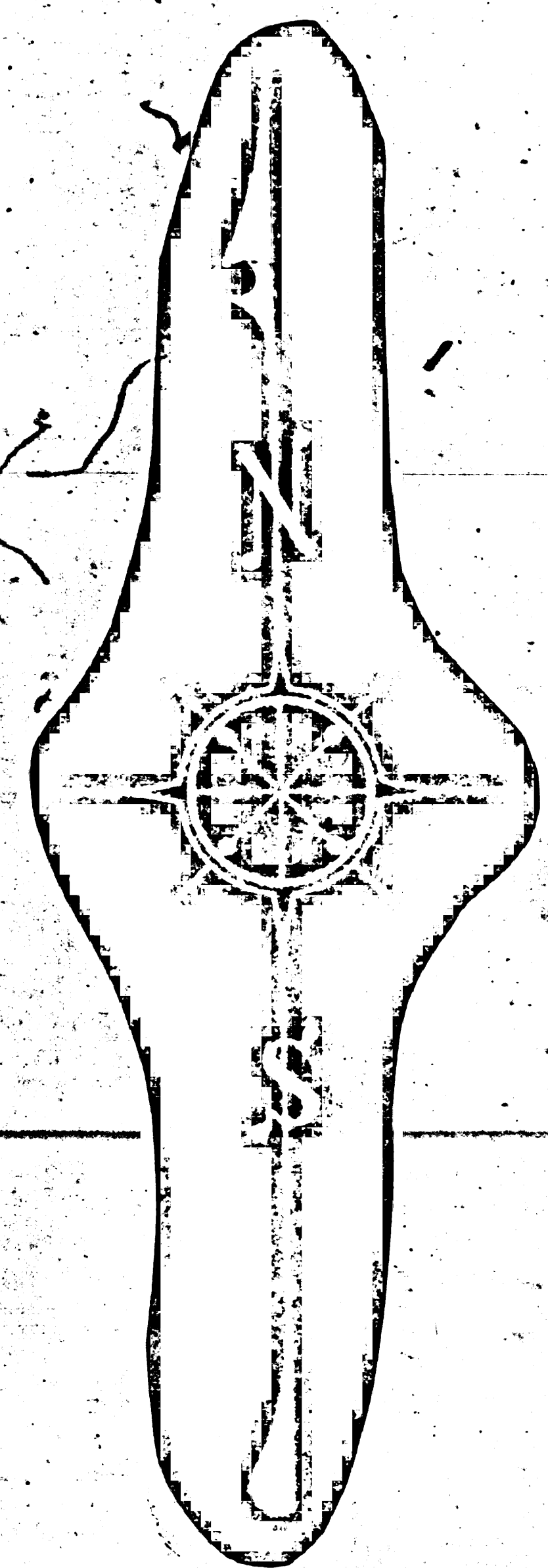
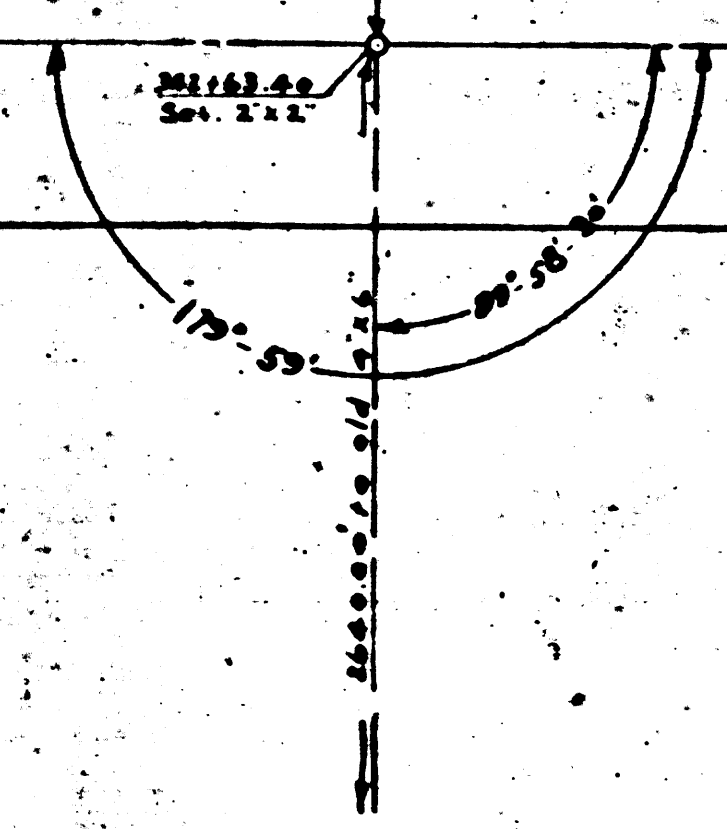
4



F.M. 17836 2
 A 5 OF A 10

72nd Street

SANTA SUSANNA PASS



AVENUE

SANTA SUSANNA

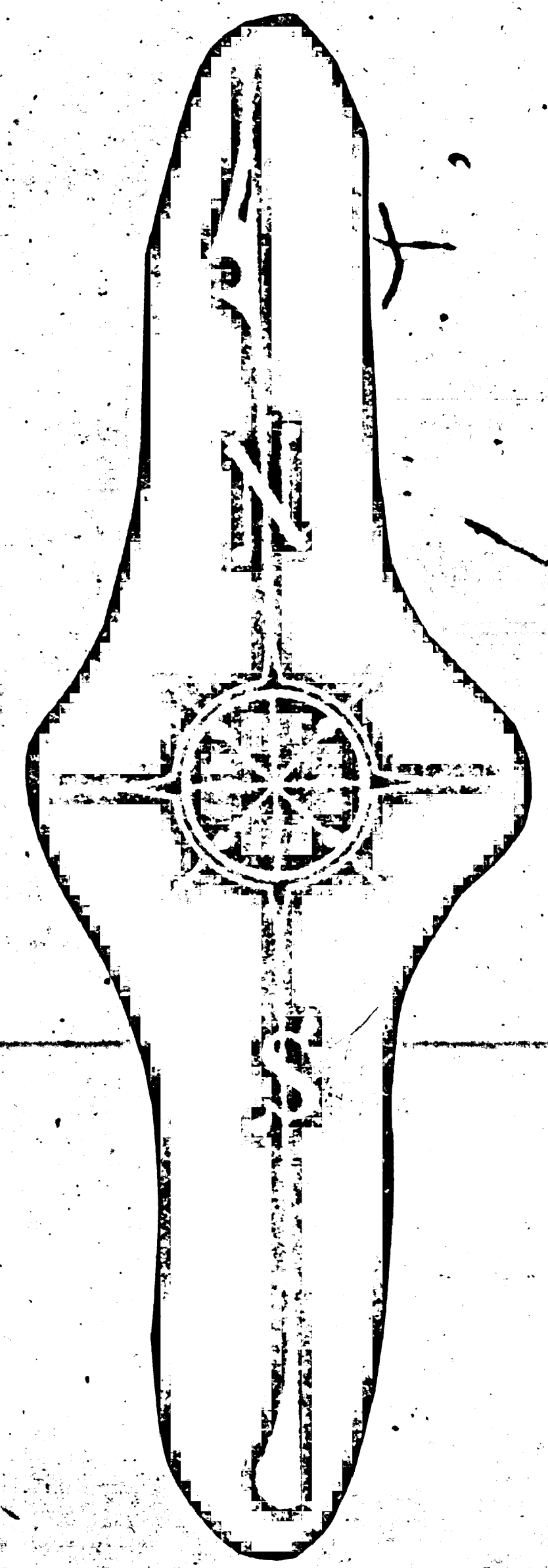
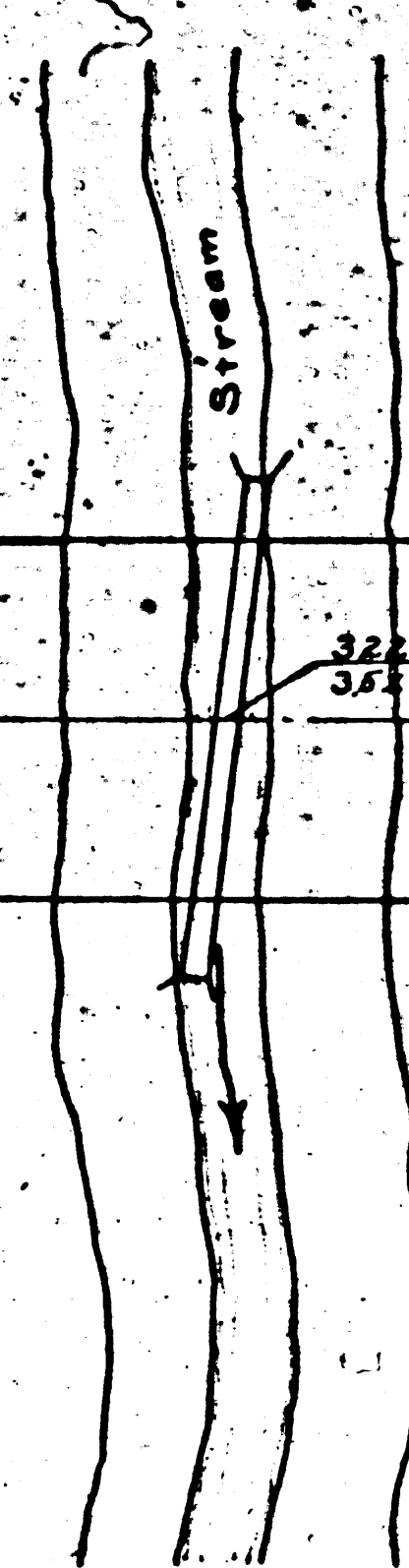
Olive Trees, 22' esp.

STREET

TENTH

FM 117836 2
 A 6 OF A 11 0

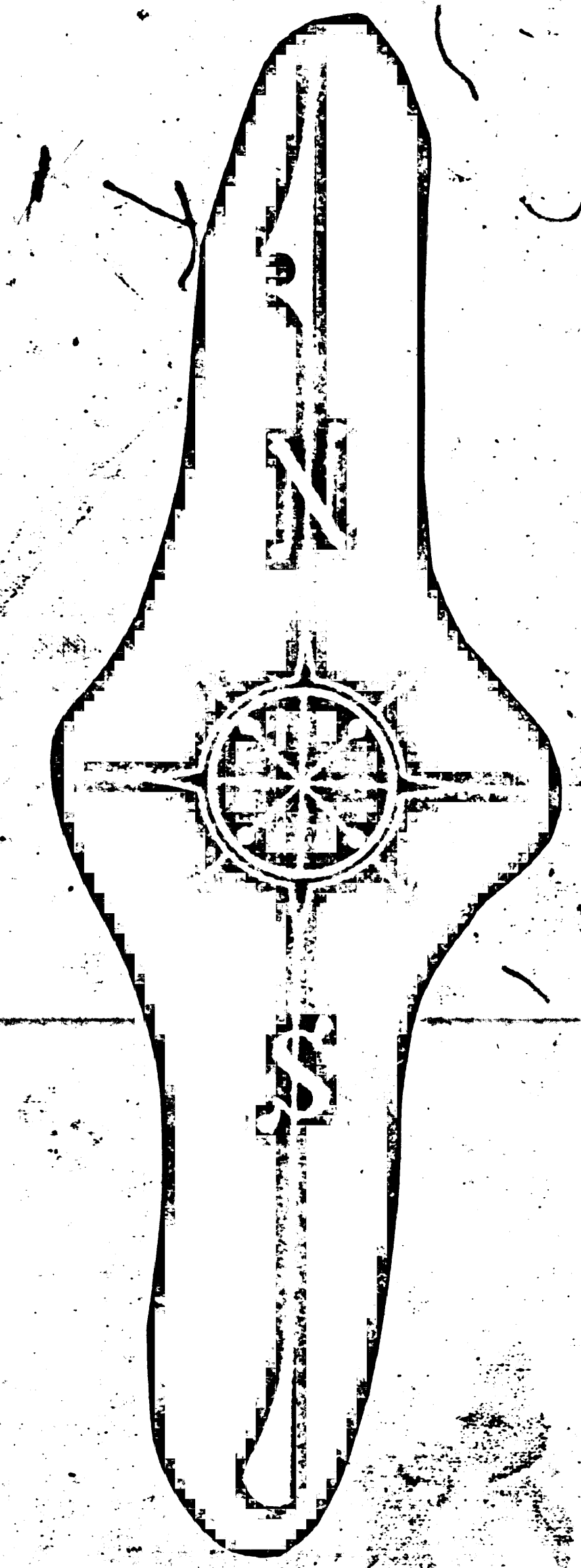
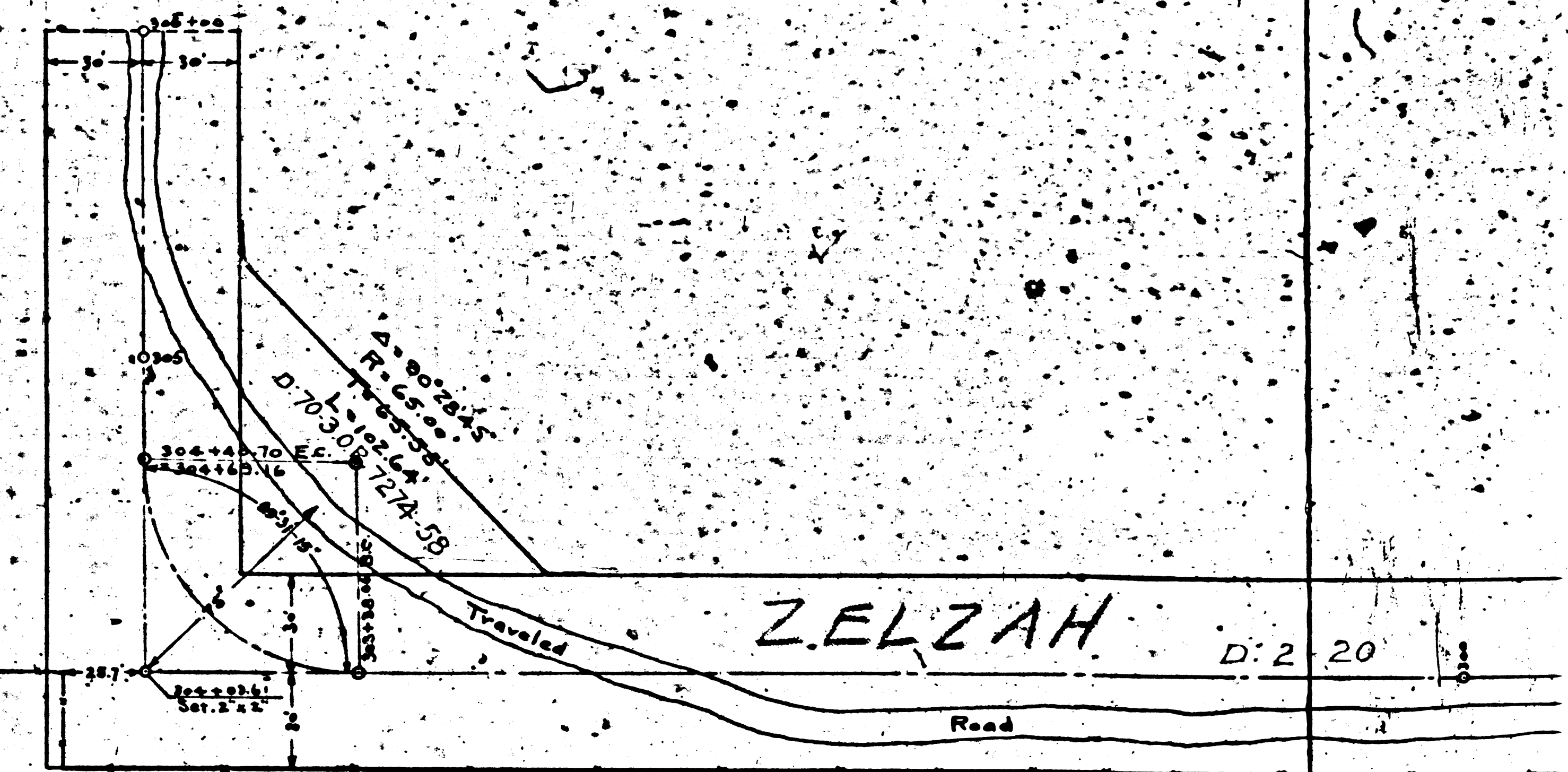
ROAD.



SANTA SUSANNA PASS

ROAD

FWM	1178362
A 7	A 110



F/M 1178362
A 8 OF A 110

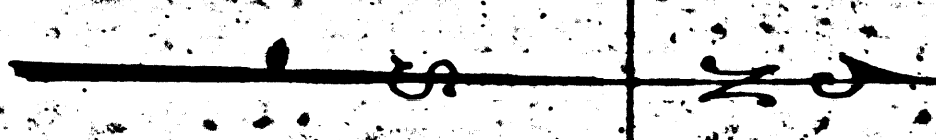
7AH

D: 2-20

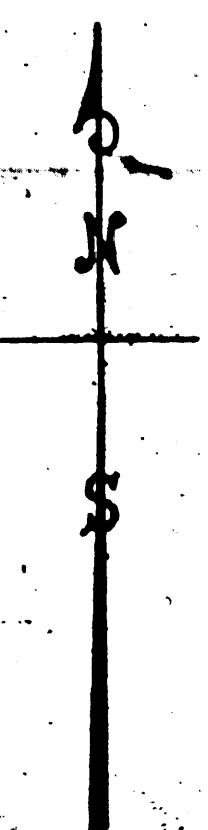
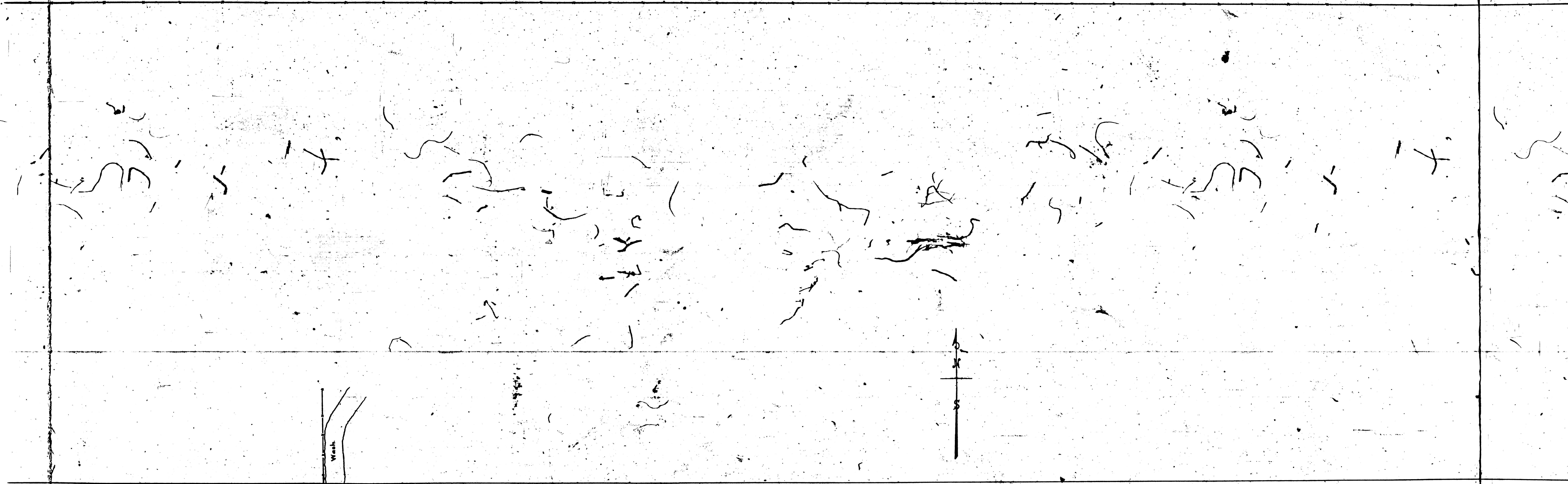
D: 1-299

SANTA SUSANNA PASS

ROAD



Road Traveled



SANTA SUSANNA PASS

ROAD

431250
431250
431250
Sec. 207

F/M 178362
A 9 OF A 110



See Sht 1
FM
6517836

LOS ANGELES COUNTY HIGHWAY COMMISSION
DIV. I.

SANTA SUSANNA PASS ROAD

FROM STA. 278+00 TO STA. 553+97.86 (FOURTH ST., CHATSWORTH PARK)

SCALE - 1" = 50'

FIELD WORK BY GWJ
OFFICE L.R.S.

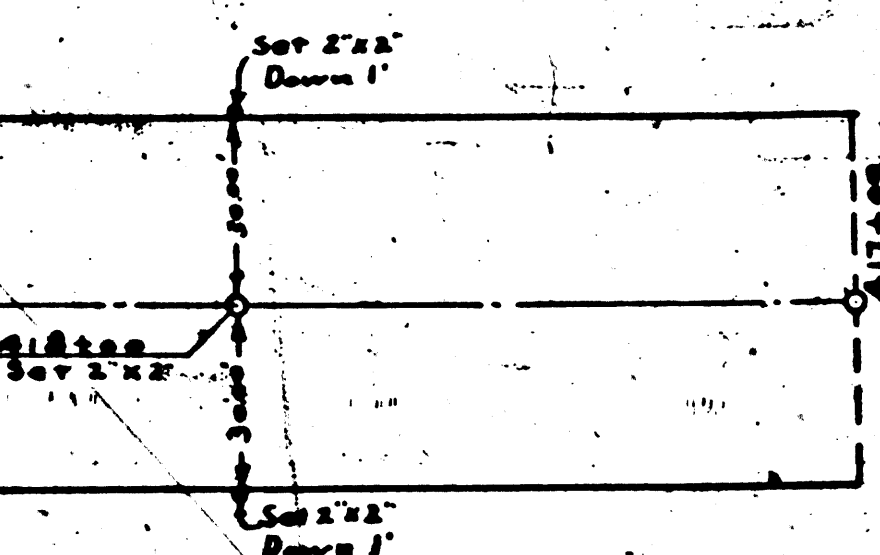
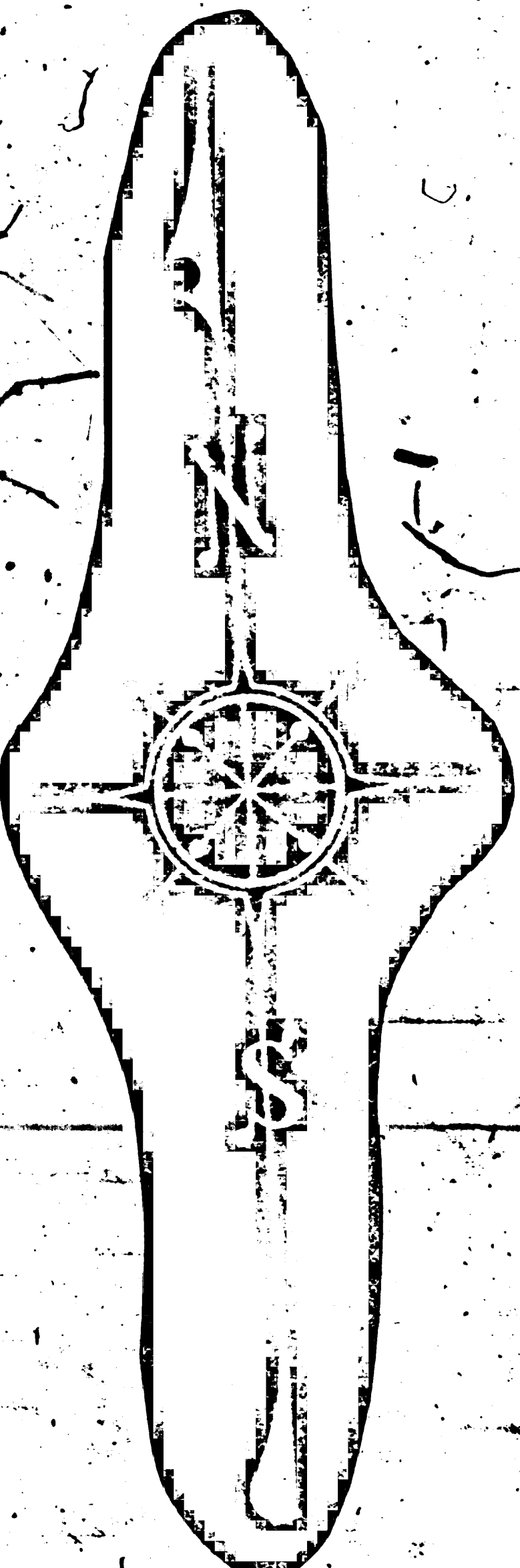
FIELD BOOK NO. 1113

A-390

Approved - June 15, 1912

[Signature]
Chief Engineer

Por. of Santa Susanna Pass Road changed to Zekiah Ave. and 2nd St.



FM 17836 2
A 10 OF A 10