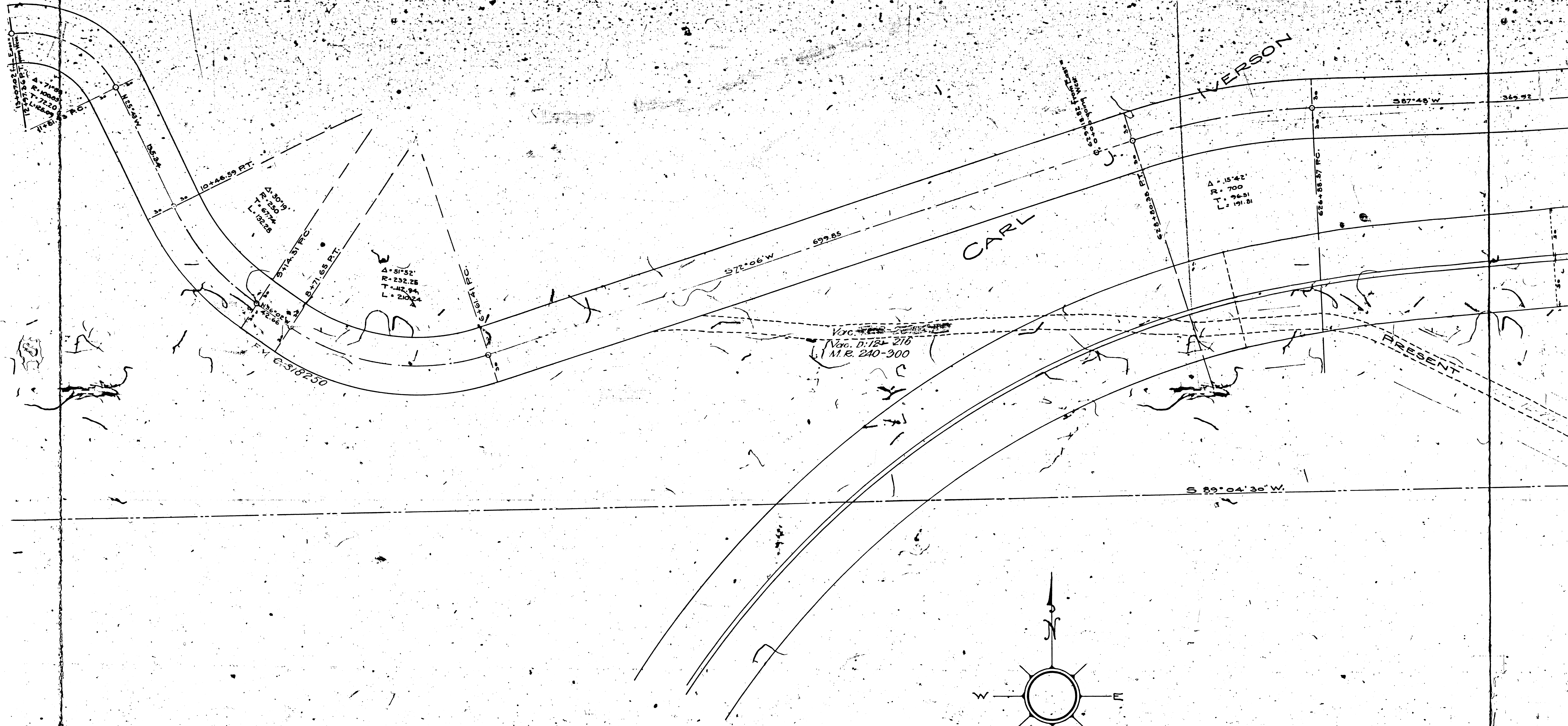
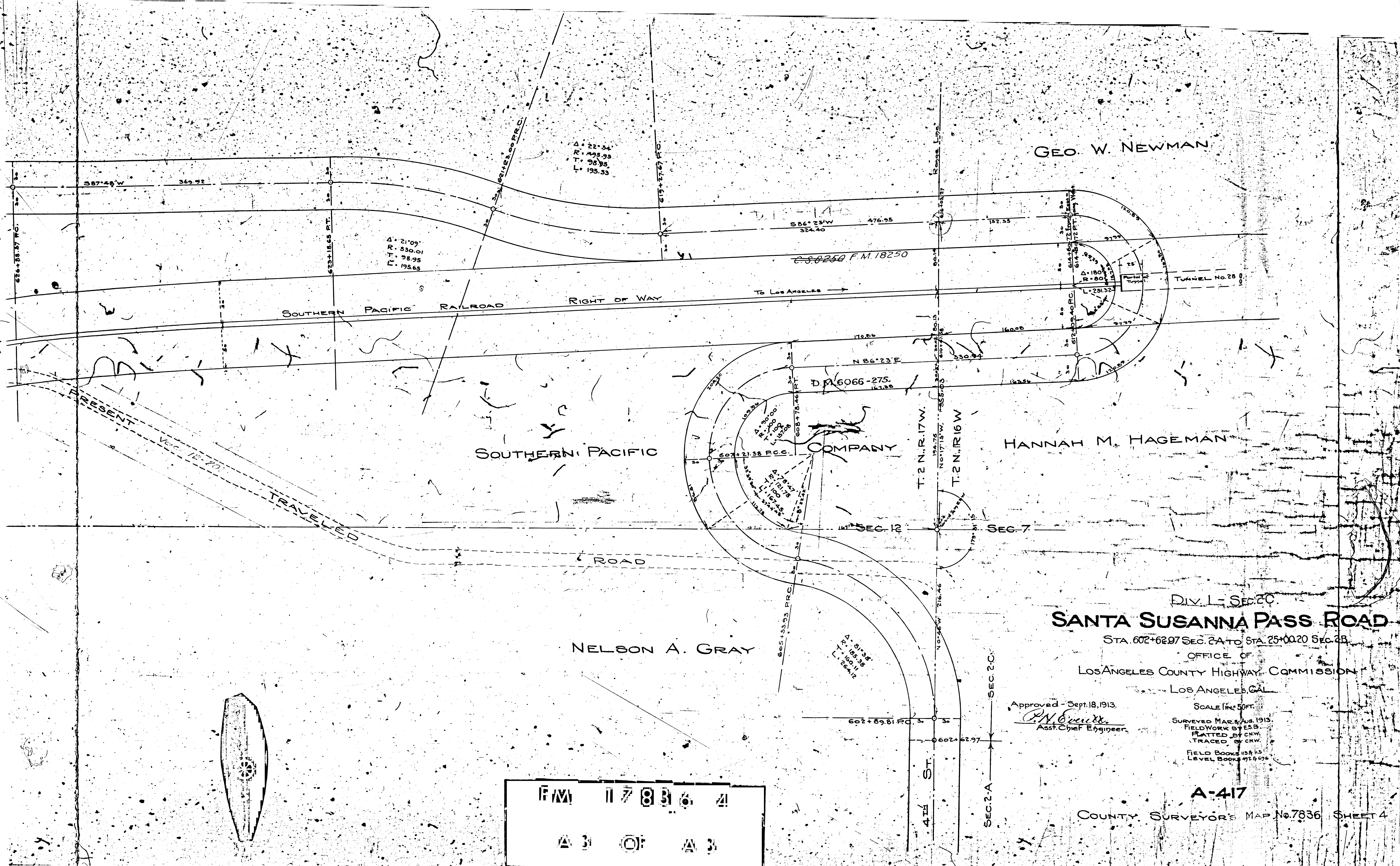


F/M 17836 4
 A 1 01 A 3



FM 178364
 A 2 OF A 3



GEO. W. NEWMAN

SOUTHERN PACIFIC COMPANY

HANNAH M. HAGEMAN

NELSON A. GRAY

SANTA SUSANNA PASS ROAD

STA. 602+62.97 SEC. 2A TO STA. 25+00.20 SEC. 2B

OFFICE OF
LOS ANGELES COUNTY HIGHWAY COMMISSION

LOS ANGELES, CAL.

Approved - Sept. 18, 1913.

P. H. Everett
Asst. Chief Engineer

SCALE 1" = 50 FT.

SURVEYED MAR. & AUG. 1913.
FIELD WORK BY E.S.B.
PLATTED BY C.H.W.
TRACED BY C.H.W.
FIELD BOOKS 1158 & 115
LEVEL BOOKS 97 & 98

A-417

COUNTY SURVEYOR'S MAP No. 7836 SHEET 4

F.M. 117836 4
A 3 OF A 3

