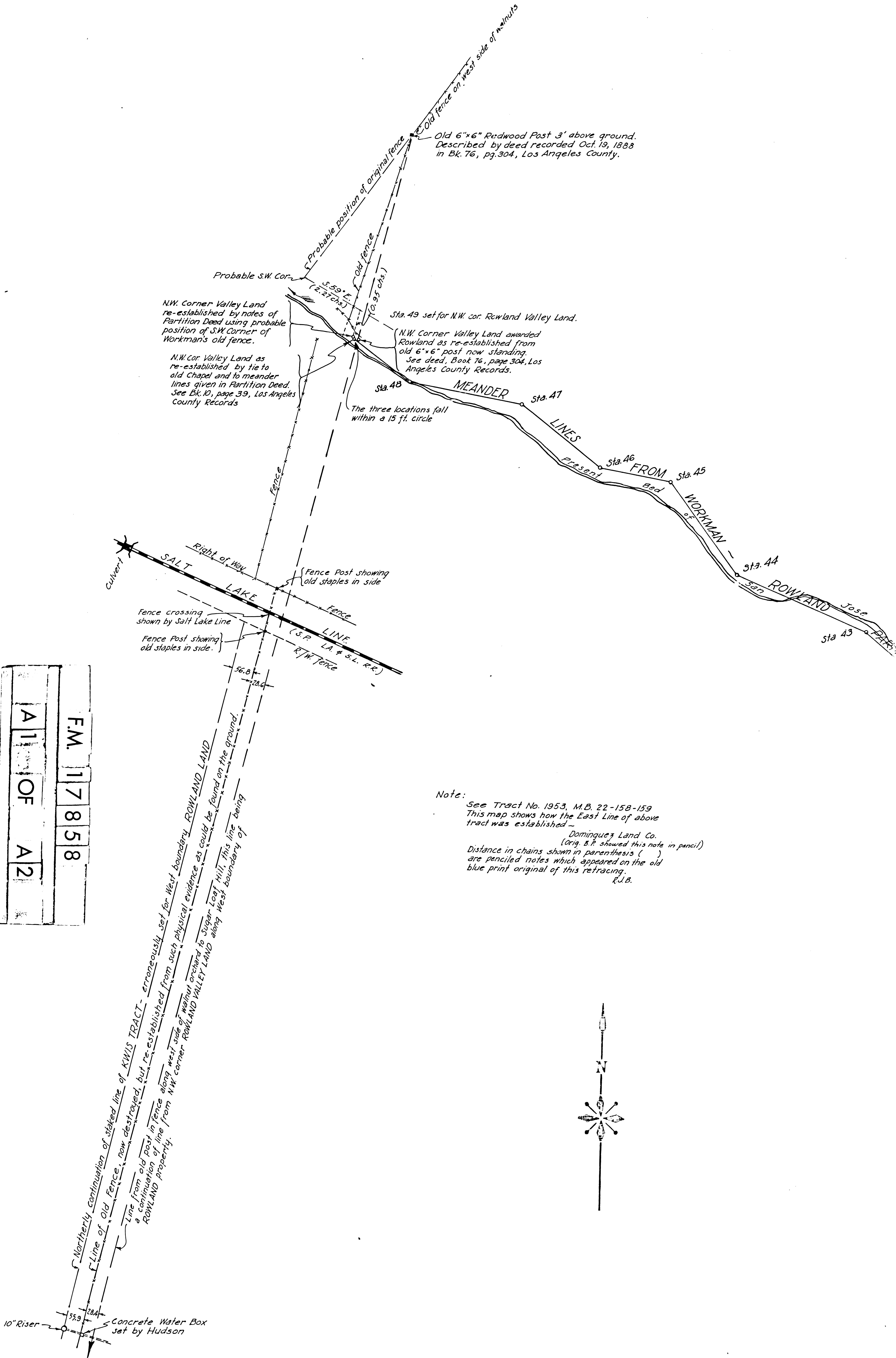


F.M.	17858
A 11 OF A 2	



N.W. Corner Valley Land re-established by notes of Partition Deed using probable position of S.W. Corner of Workman's old fence.

N.W. Corner Valley Land as re-established by tie to old Chapel and to meander lines given in Partition Deed. See Bk. 10, page 39, Los Angeles County Records

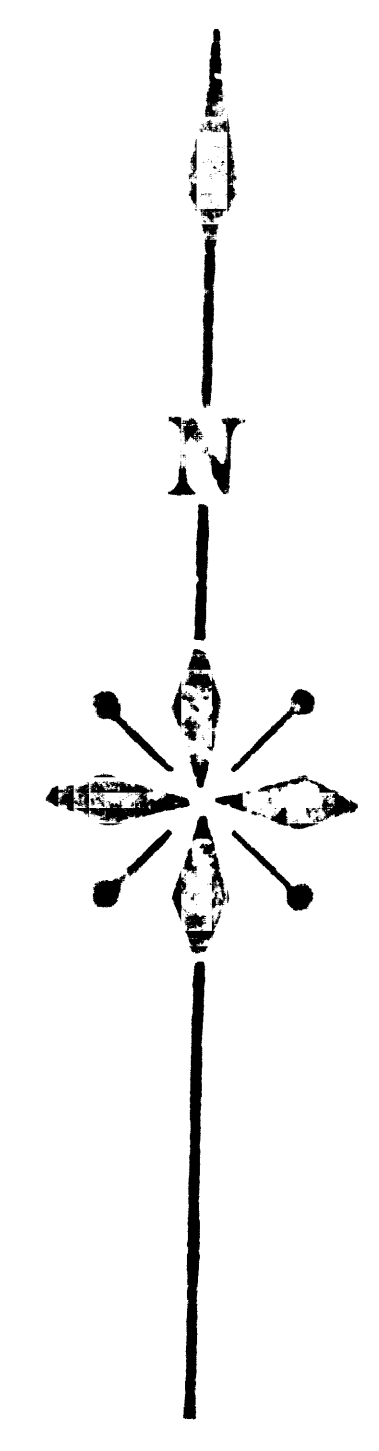
Old 6"x6" Redwood Post 3' above ground. Described by deed recorded Oct. 19, 1888 in Bk. 76, pg. 304, Los Angeles County.

Sta. 49 set for N.W. cor. Rowland Valley Land.

N.W. Corner Valley Land awarded Rowland as re-established from old 6"x6" post now standing. See deed, Book 76, page 304, Los Angeles County Records.

The three locations fall within a 15 ft. circle

Note:  
 See Tract No. 1953, M.B. 22-158-159  
 This map shows how the East Line of above tract was established -  
 Dominguez Land Co.  
 (Orig. B.P. showed this note in pencil)  
 Distance in chains shown in parenthesis ( ) are penciled notes which appeared on the old blue print original of this retracing.  
 R.J.B.

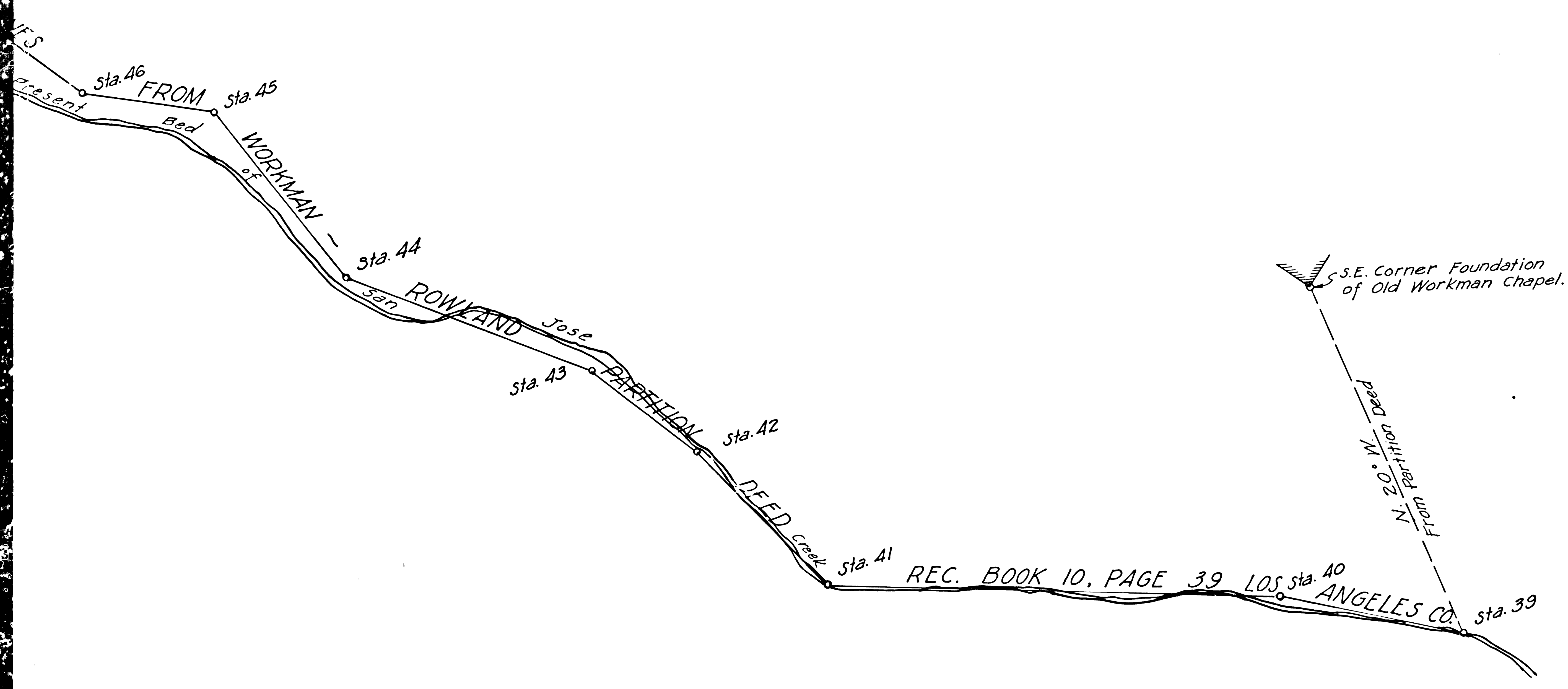


Northerly continuation of staked line of KWIS TRACT - erroneously set for West boundary ROWLAND LAND

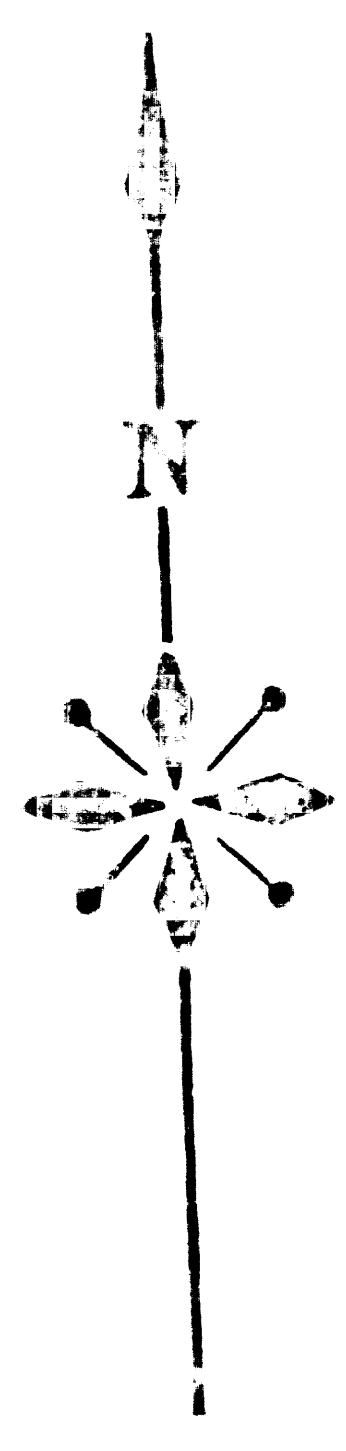
Line from old post in fence along west side of walnut orchard to Sugar Loaf Hill, this line being a continuation of line from NW corner ROWLAND VALLEY LAND along West boundary of ROWLAND properly.

Line from old post in fence, now destroyed, but re-established from such physical evidence as could be found on the ground.

ground.  
 Oct 19, 1888  
 County.



1953, M.B. 22-158-159  
 from the East Line of above  
 finished -  
 Dominguez Land Co.  
 (Orig. B.P. showed this note in pencil)  
 shown in parenthesis ( )  
 which appeared on the old  
 of this retracing.  
 R.J.B.



A	F.M.
2	17
OF	858
A	
2	

SKETCH  
 TO ESTABLISH  
 EAST BOUNDARY OF  
 PUENTE RANCHO  
 (PORTION OWNED BY TORRANCE MARSHALL CO.)  
 T. 2 S., R. 10 W.  
 FILED MAP NO. 17858

DOMINGUEZ LAND CO.		SCALE
LOS ANGELES	CALIFORNIA	1" = 100'
DRAWN BY C.F.S.	Approved: <i>Ralph Bennett</i> Chief Engineer	298
TRACED BY C.F.S.		
CHECKED BY C.F.S.		
DATE Sept 5 '12		

Retraced by R.J. Black, Jan. 1958, from the paper  
 blue-print original map which has been discarded.  
 Checked by *R.J. Black*

I.M. 33