

F.M. 17864
5.2' W.W.
D: 16-50

PC 5741.96
PCL 7638
PT 5316.54

5.2' W.W.

PC 3004.887
PCL 3594
PT 3301.833

Ord. 22875

D: 16-50 & D: 11-177

On Old Alignment D: 11-112 & D: 11-158 Reconveyed to Grant

FRB POST No. 157

F.M. 17865
A7 OF A7

13

18

19

1

2

3

4

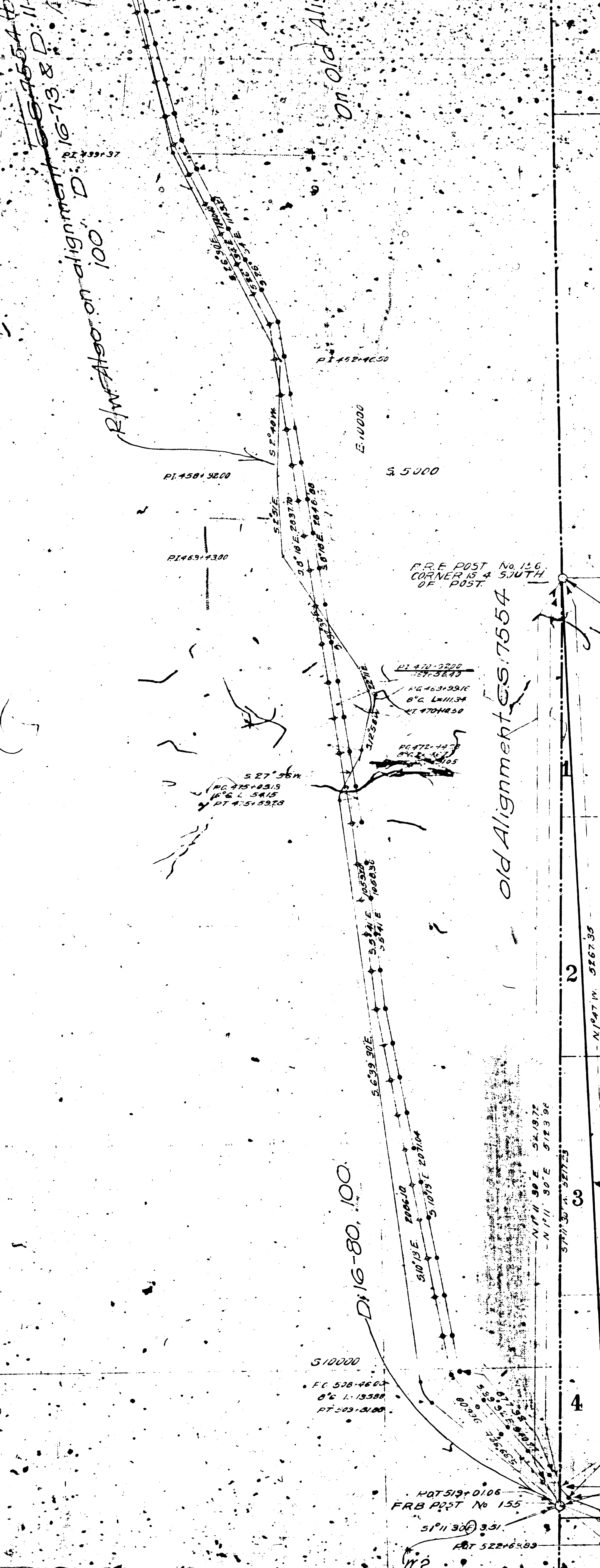
5

145000

000

19

30



FRB POST No. 126
CORNER 13 & 570TH
OF POST.

Old Alignment CS 7554

D16-80-100

R/W Also on alignment 100

F.M. 17855
 A 2 OF A 7

FRB POST No. 155

FRB 5224600

FRB 5224600

510000

PAT 319-0106
FRB POST No 155

PAT 522-6503

PAT 319-0106
FRB POST No 155
PAT 522-6503

PAT 522-6503

PAT 522-6503

PAT 522-6503

PAT 522-6503

PAT 522-6503

PAT 522-6503

PAT 522-6503

PAT 522-6503

PAT 522-6503

PAT 522-6503

PAT 522-6503

PAT 522-6503

PAT 522-6503

PAT 522-6503

PAT 522-6503

PAT 522-6503

PAT 522-6503

PAT 522-6503

PAT 522-6503
FRB POST No 155
PAT 522-6503

PAT 522-6503

41N.
31
R.15W.

private road
DIST-89 O.S. 6111-200

DC 5001837
O.S. 11-17-13
PT 511-17-13

DC 5001837
O.S. 11-17-13
PT 511-17-13

D-11-222, 100
& Perc. 5.7554 (Blue Print)

515000

NEWHALL RANCH

RESERVE

FOREST

FRB POST No 154

FRB POST No 154

FRB POST No 154

FRB POST No 154

FRB POST No 154

FRB POST No 154

FRB POST No 154

FRB POST No 154

FRB POST No 154

FRB POST No 154

FRB POST No 154

FRB POST No 154

FRB POST No 154

FRB POST No 154

TOWNSHIP 4 NORTH
TOWNSHIP 3 NORTH

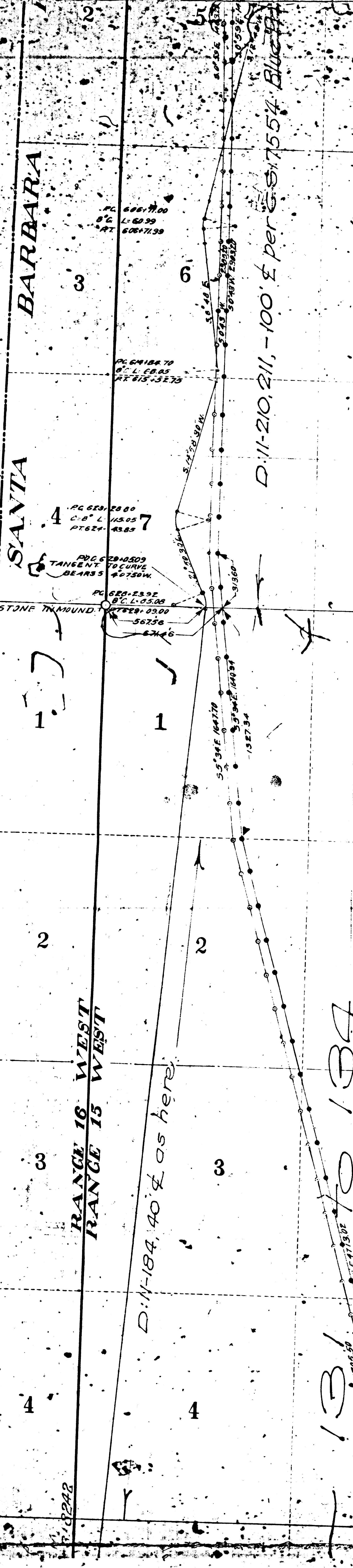
D-11-183, 40
& Perc. 5.7554 (Blue 3 Print)

DC 50012479
O.S. 11-17-13
PT 509-17-13

D-11-754 Blue Print

FM 17835
A3 OF A7

T3N.
6
R.15W.



T3N
6
R.15W.

T3N
7
R.15W.

SANTA BARBARA

RANGE 16 WEST
RANGE 15 WEST

D: 11-184.40' & as here

D: 11-210.211, -100' & per 5-175.54' Blue

FM 17865
A4 OF A7

320.00

327.5000

1-12222

1 B / 10 134

F.M. 17865
A5 OF A7

13

24

F.R.B. POST No 152
NEWHALL RANCH POST No 3

F.R.B. POST No 151
S.F. POST No 13

PG 743 1857
8° E. L. 115.81
BT 743 2331

Old Alignment

D.M. 35007

T3N
R.15W

T3N
R.15W

SAN

FERNANDO

SURV LINE

GAS PIPE IN MOUND PUT
IN BY STANDARD OIL Co

DOT 734 4956

2578

DOT 704 1305

See C-8 1922

3029.64 57.02 807

3029.64 57.02 807

3029.64 57.02 807

3029.64 57.02 807

3029.64 57.02 807

3029.64 57.02 807

3029.64 57.02 807

3029.64 57.02 807

3029.64 57.02 807

3029.64 57.02 807

3029.64 57.02 807

3029.64 57.02 807

3029.64 57.02 807

3029.64 57.02 807

3029.64 57.02 807

3029.64 57.02 807

3029.64 57.02 807

3029.64 57.02 807

3029.64 57.02 807

3029.64 57.02 807

3029.64 57.02 807

3029.64 57.02 807

3029.64 57.02 807

3029.64 57.02 807

3029.64 57.02 807

3029.64 57.02 807

3029.64 57.02 807

3029.64 57.02 807

3029.64 57.02 807

3029.64 57.02 807

3029.64 57.02 807

3029.64 57.02 807

3029.64 57.02 807

3029.64 57.02 807

3029.64 57.02 807

3029.64 57.02 807

3029.64 57.02 807

3029.64 57.02 807

3029.64 57.02 807

3029.64 57.02 807

3029.64 57.02 807

3029.64 57.02 807

3029.64 57.02 807

3029.64 57.02 807

3029.64 57.02 807

3029.64 57.02 807

3029.64 57.02 807

3029.64 57.02 807

3029.64 57.02 807

3029.64 57.02 807

24

T.3N.
19
R.15W.

MISSION

SAN

FERNANDO

EX

SULLY

RIGHT OF WAY

Alignment C.S.

153500

D:6039-74

F.M. 17865
A6 OF A7

F.R.B. POST No. 151
S.F. POST No. 15

P.C. 743+1057
S.C. L. 145.21
N.T. 743+5328

GAS PIPE IN MOUND. PUT
IN BY STANDARD OIL CO.

NO. 1554
P.C. 746+4468
S.C. L. 149.79
N.T. 747+5033

P.C. 748+1248
S.C. L. 1-20.58
N.T. 748+1248

D:2291

P.C. 801+000
S.C. L. 1-00.00
N.T. 801+000

P.C. 803+1123
S.C. L. 33.57
N.T. 803+1123

P.C. 812+8196
S.C. L. 73.80
N.T. 812+8196

P.C. 818+1807
S.C. L. 29.04
N.T. 818+1807

P.O.T. 820+196.06

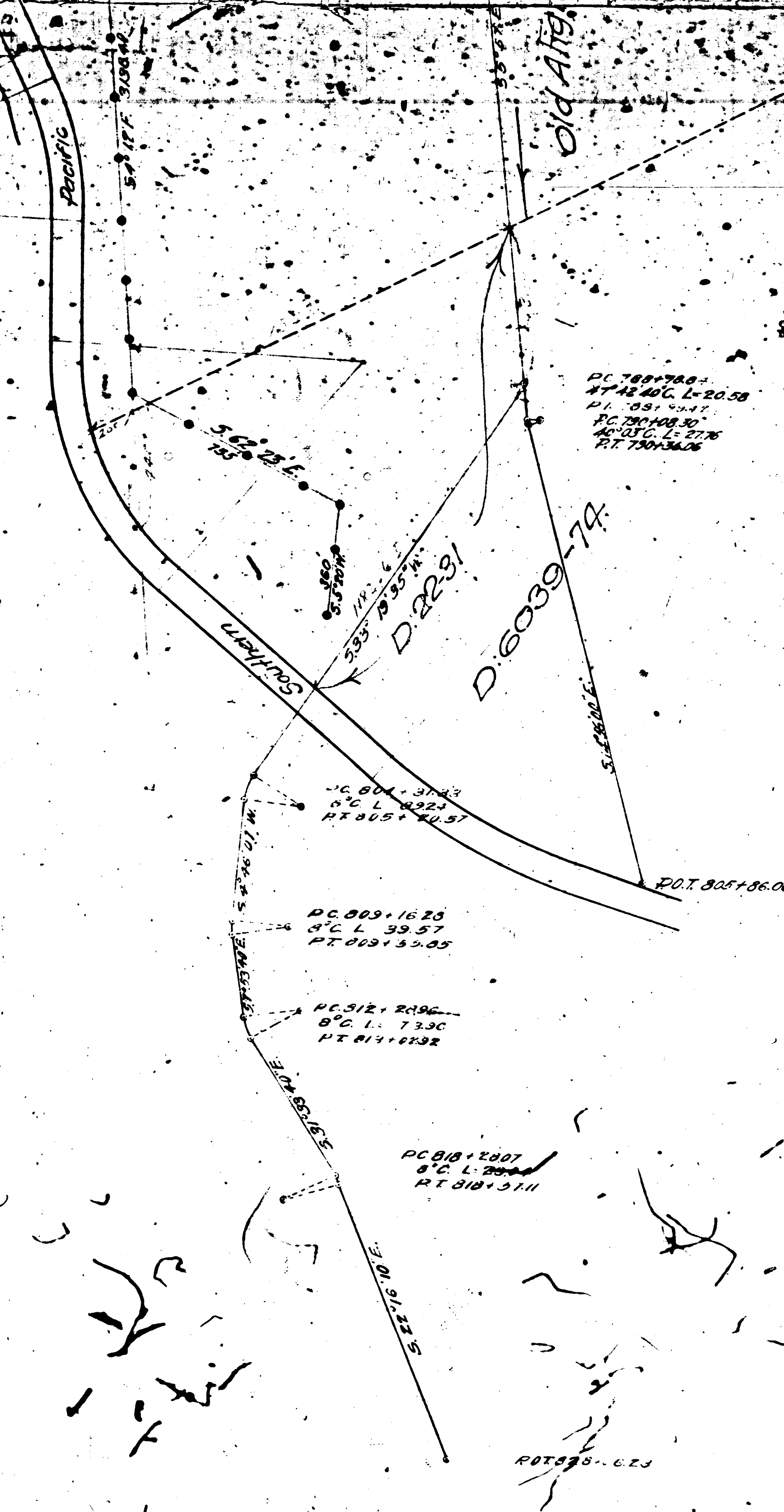
Pacific

SULLY

SULLY

SULLY

FOR PRIVATE USE



RIGHT OF WAY MAP
SAUGUS DIVISION

FROM
 STATION 390+49.82 TO STATION 828+06.23

Scale 1 inch = 400 Feet
 Jan. 1912

CITY OF LOS ANGELES
 DEPARTMENT OF PUBLIC WORKS
 LOS ANGELES AQUEDUCT

IM 56
 IM 62
 IM 234-117

RM 17865		
A7	OF	A7