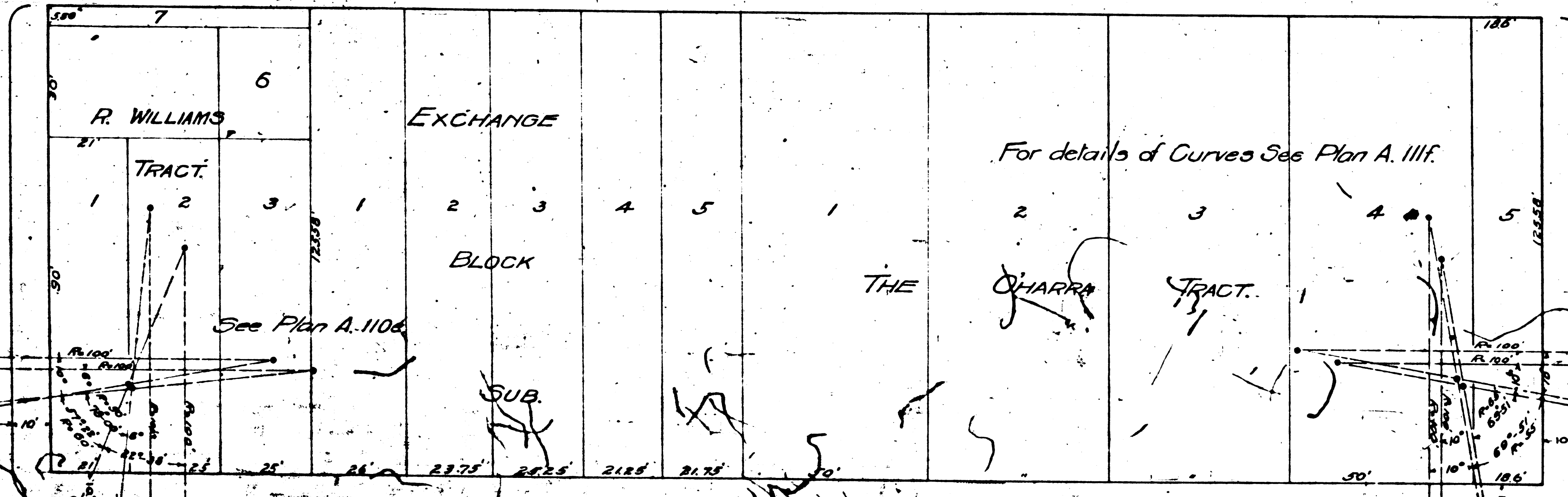


Scale 1" = 30'

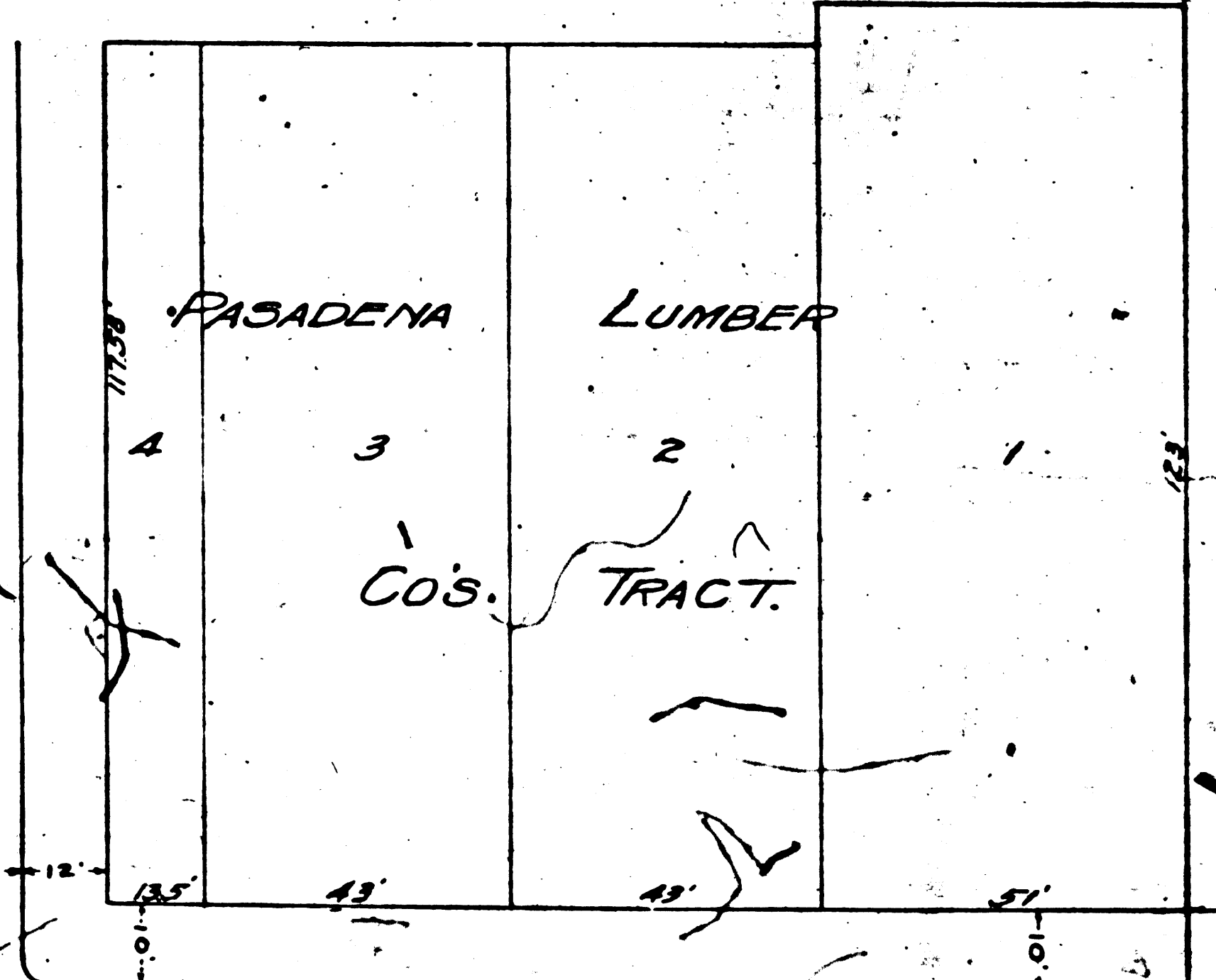
N

FAIR OAKS

AVE.



DOUBLE TRACKING MAP SEE RM. 216

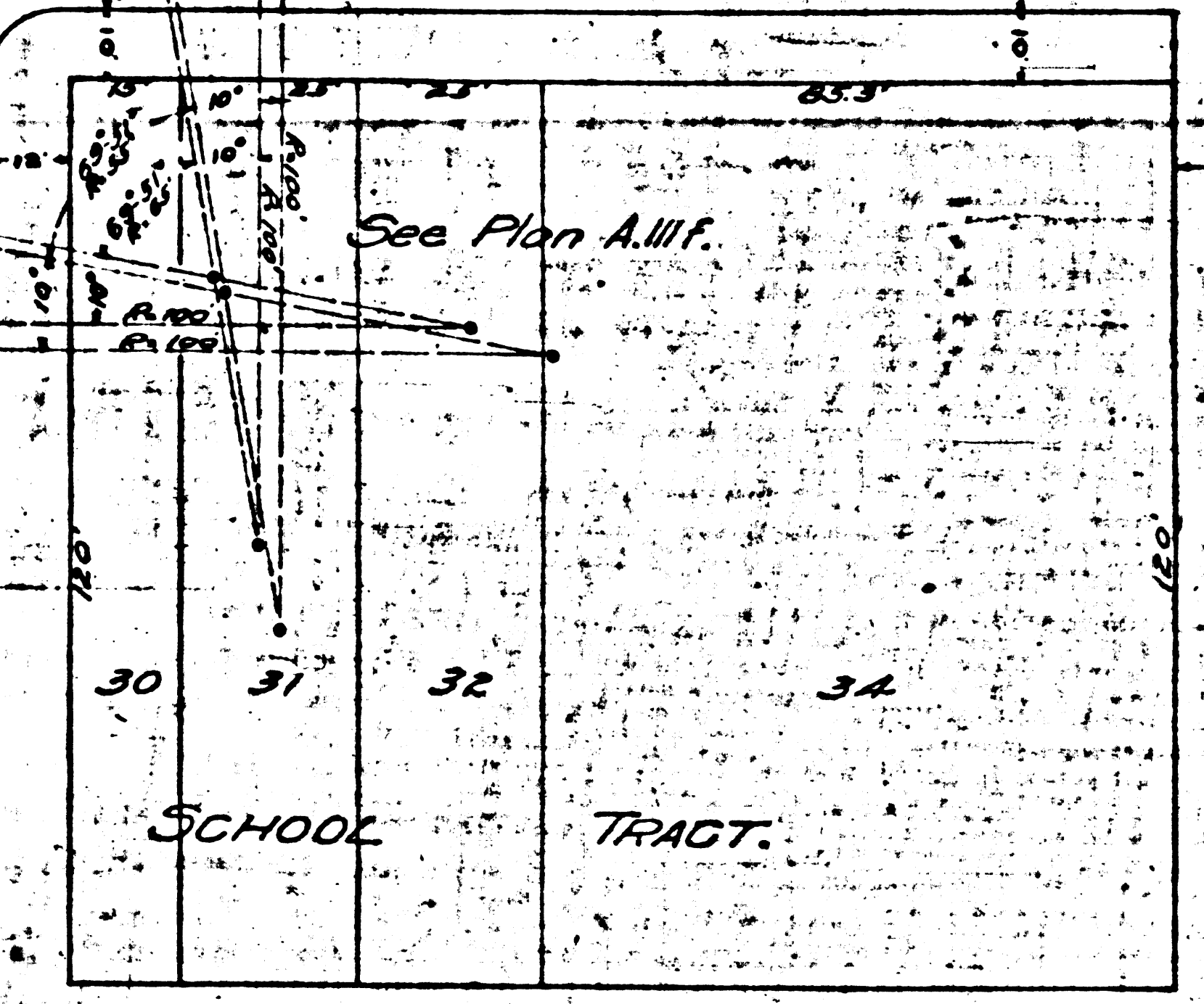
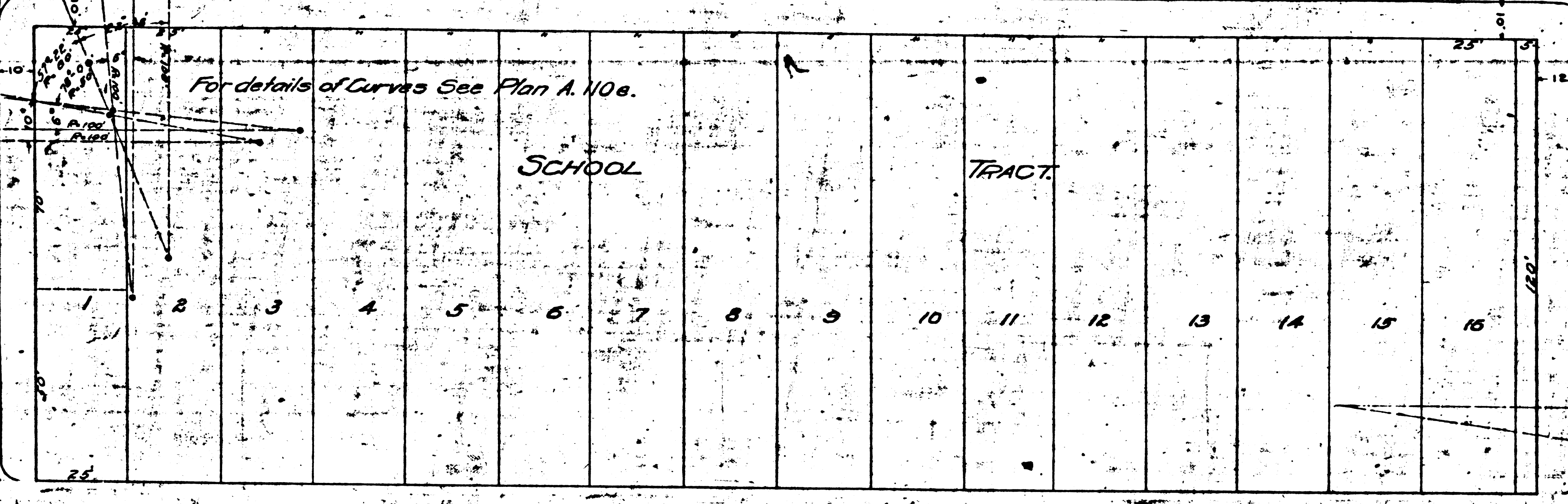


RAYMOND

SOUTHERN CALIFORNIA

COLORADO ST. BLVD.

Index # 8



AVE.

Drawing 171f.

F M 178 02

A II OF A II II

PACIFIC ELECTRIC
COLORADO

FROM FAIR OAKS AVE. TO HILL

PAS
Const. File

REVISED APRIL 1914. LEW.

For details of Crossing See Plan M.N.F. 134.

1.25'-30"
R. 1000'
57'-210"

BROADWAY

MARENGO

COLORADO

AVE.

FROST'S

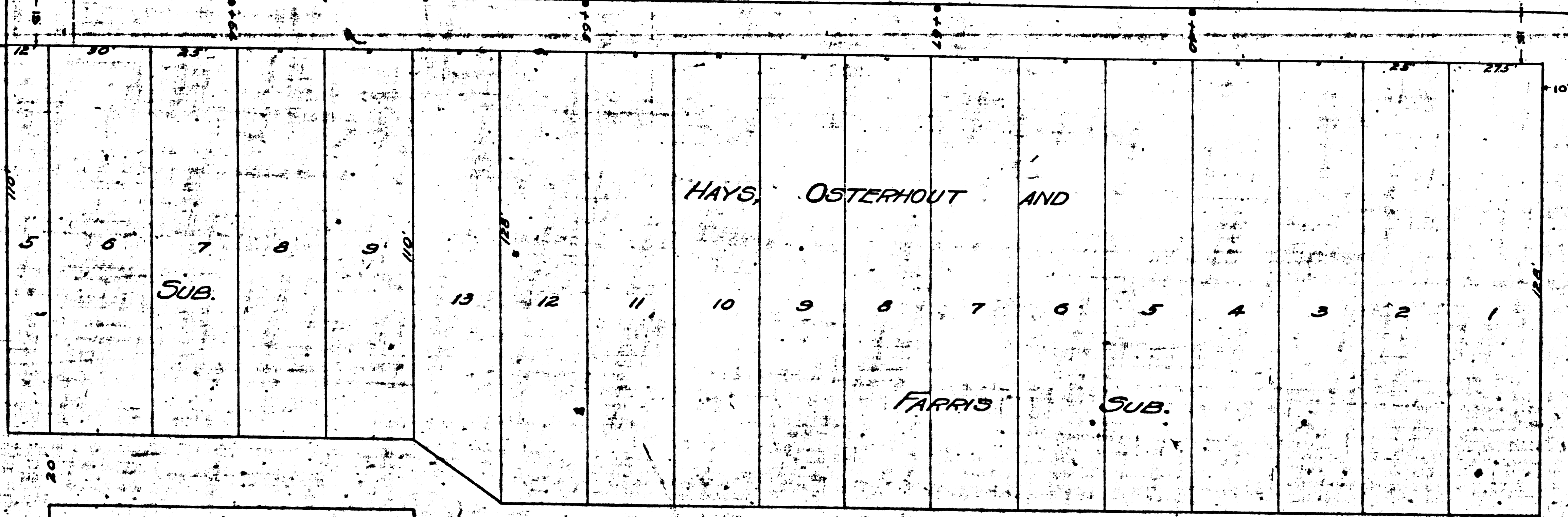
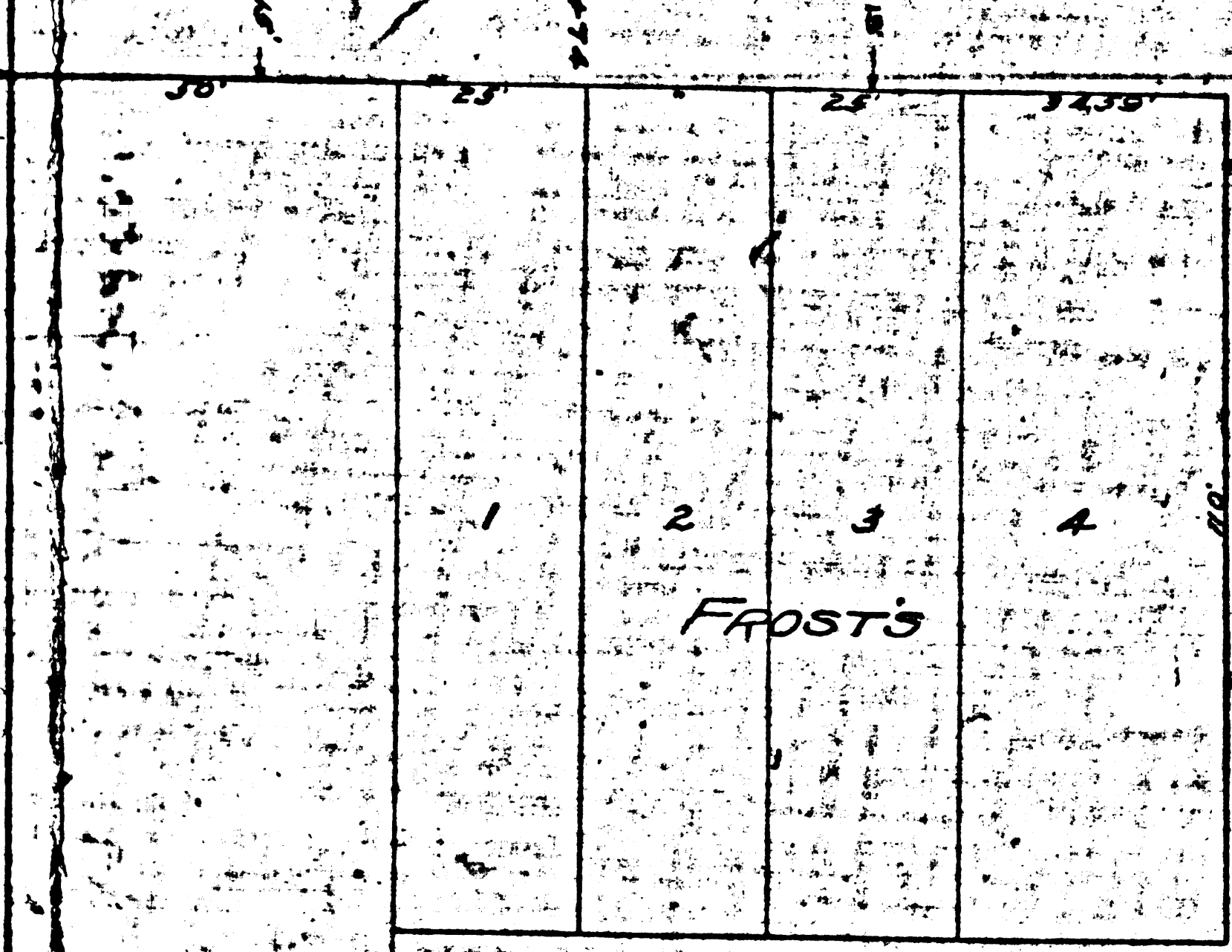
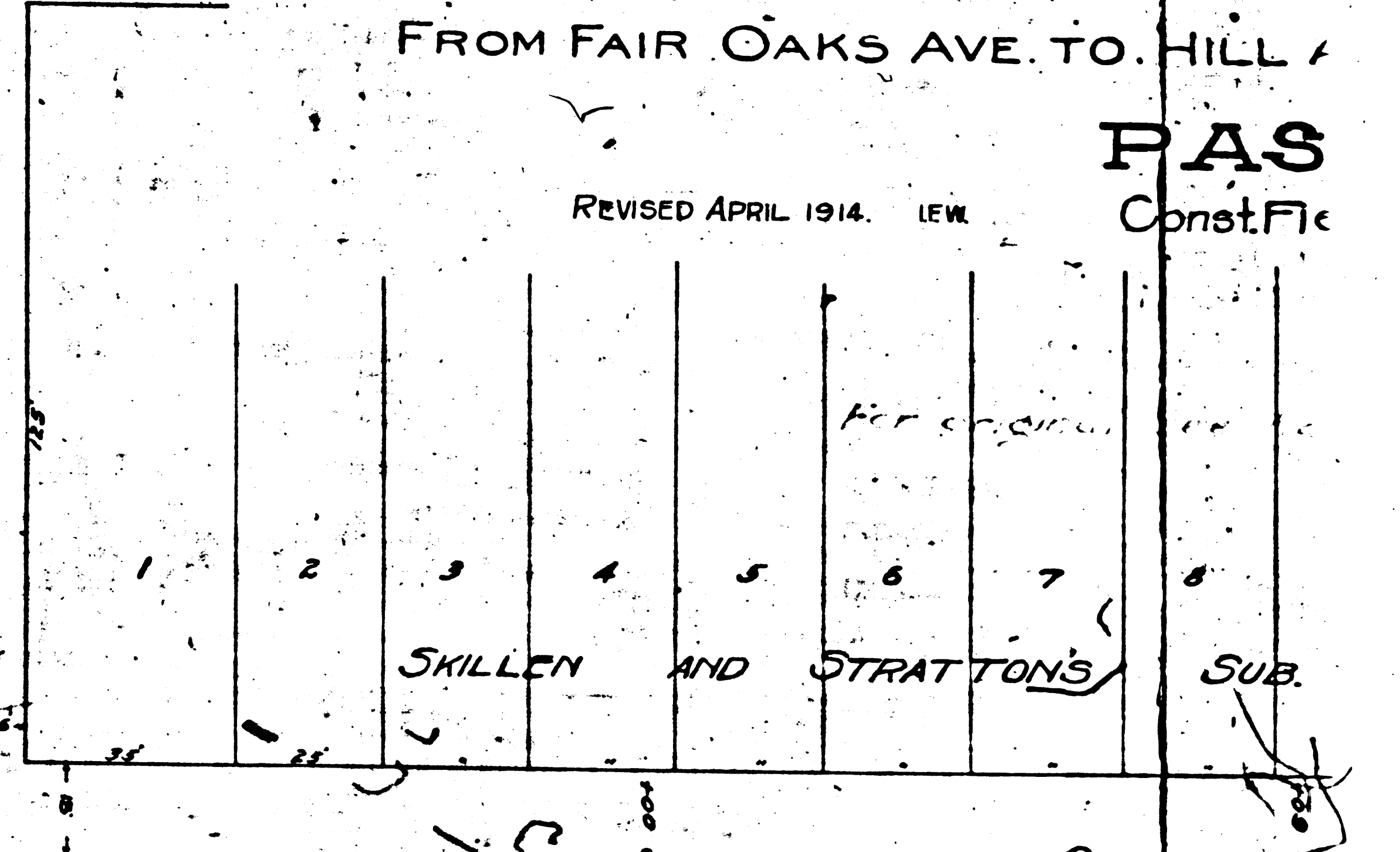
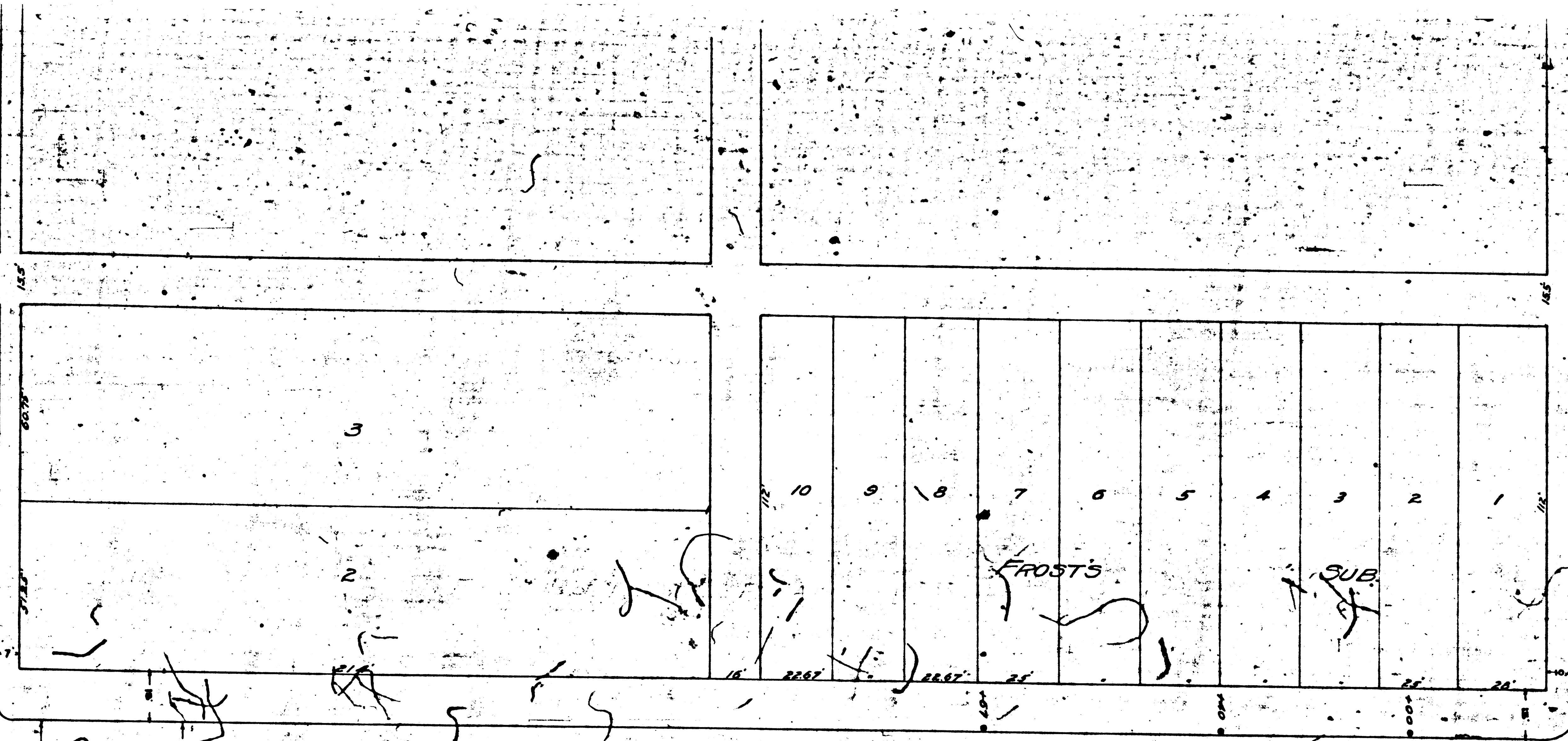
BROADWAY

HAYS, OSTERHOUT AND

FARRIS SUB.

PLAN 178912

A 2 OF A 11



PACIFIC ELECTRIC RAILWAY COMPANY

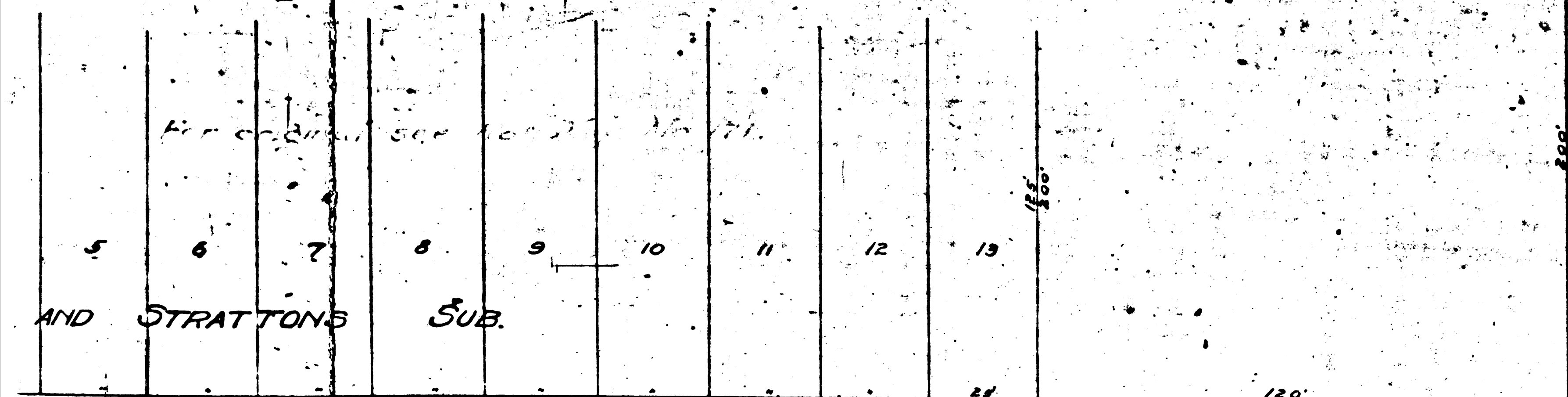
COLORADO STREET

FROM OAKS AVE. TO HILL AVE. THROUGH PASADENA

PASADENA

Const. Field Book No. 1607. Scale: 1"=30'

APRIL 1914. L.E.W.



WORCESTER AVE.

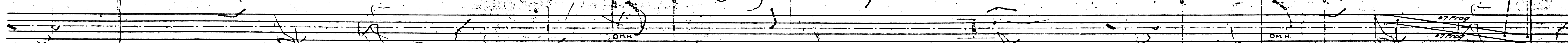
G. E. MEHARRY'S

EUCLID

SUBDIVISION.

COLORADO

ST.



AVE.

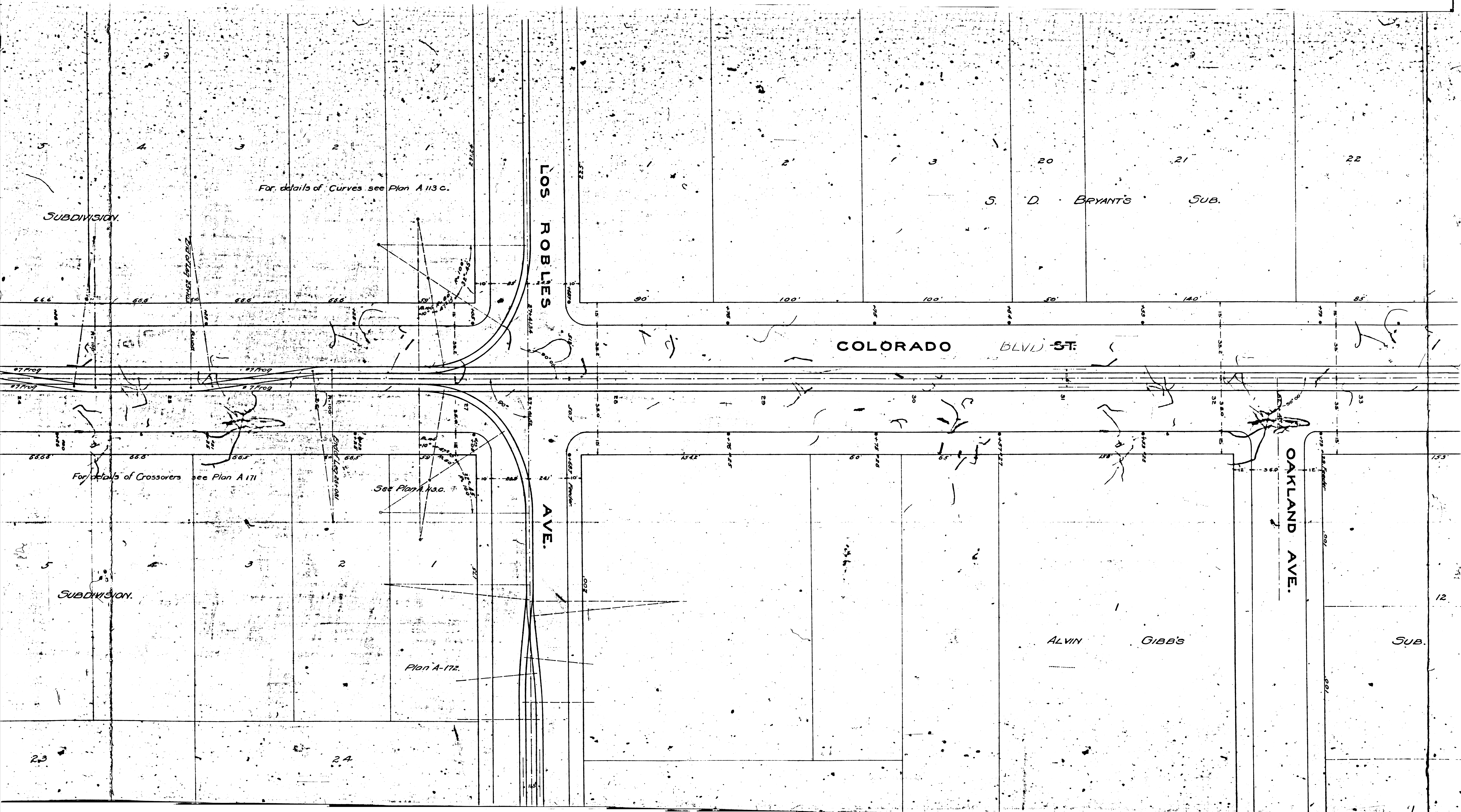
SKILLEN'S

SUBDIVISION.

For details of C

F/M 117892

A 3 OF A 11



For details of Curves see Plan A 113 C.

For details of Crossovers see Plan A 171

See Plan A 100.

Plan A-172.

LOS ROBLES AVE.

COLORADO BLVD ST.

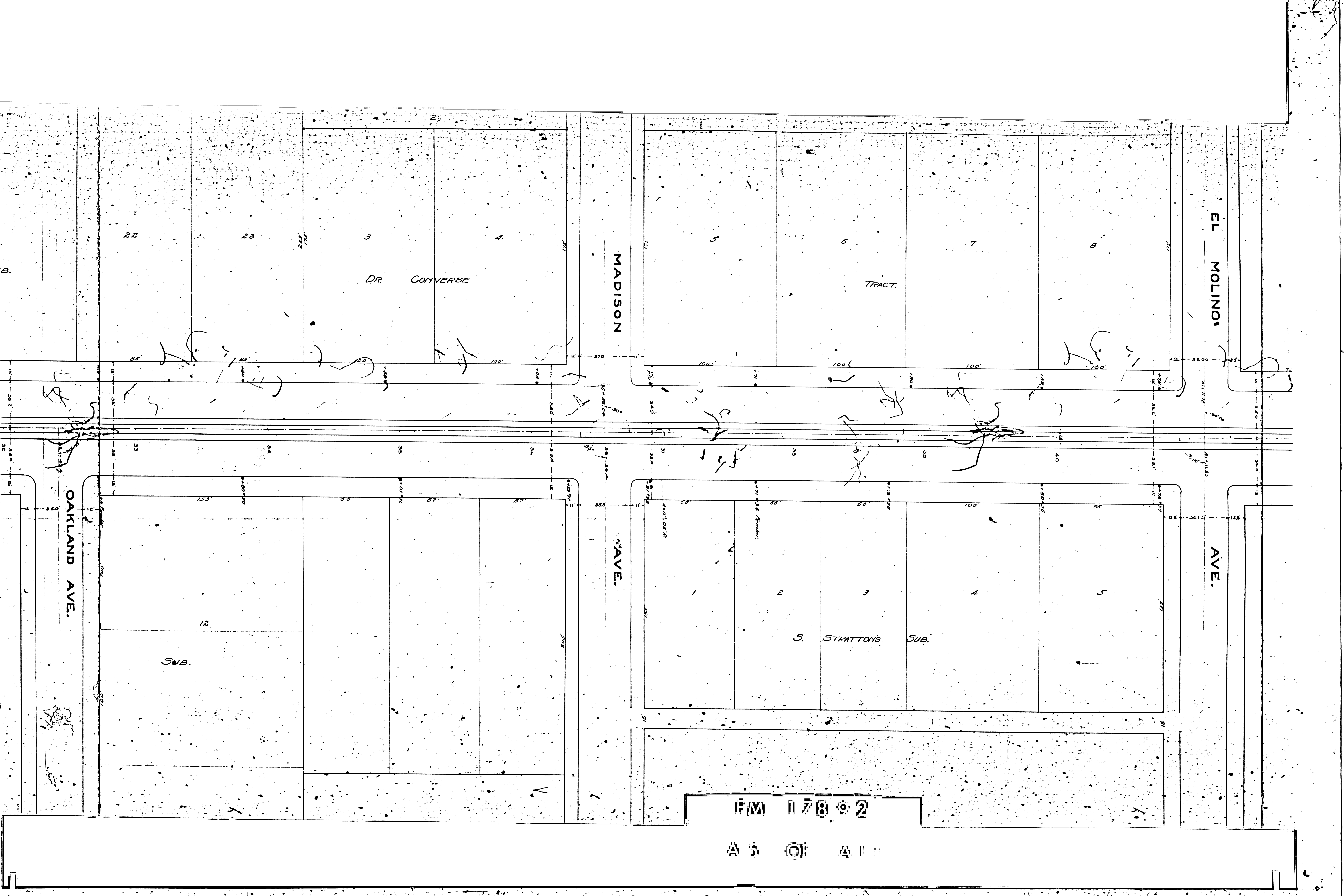
OAKLAND AVE.

S. D. BRYANT'S SUB.

ALVIN GIBB'S SUB.

F/M 17892

A 4 OF A 11



OAKLAND AVE.

MADISON

EL MOLINO

AVE.

AVE.

DR. CONVERSE

TRACT.

STRATTON'S SUB.

SUB.

FPM 117892

A 5 0 11

22

23

3

4

5

6

7

8

12

1

2

3

4

5

85

85

100

100

100.5

100

100

100

33

34

35

36

37

38

39

40

15

153

88

67

67

88

66

66

100

65

11

11

11

11

11

11

11

11

11

11

11

11

11

11

11

11

11

11

11

11

11

11

11

11

11

11

11

11

11

11

11

11

11

11

11

11

11

11

11

11

11

11

11

11

11

EL MOLINO

HUBSON

LAKE

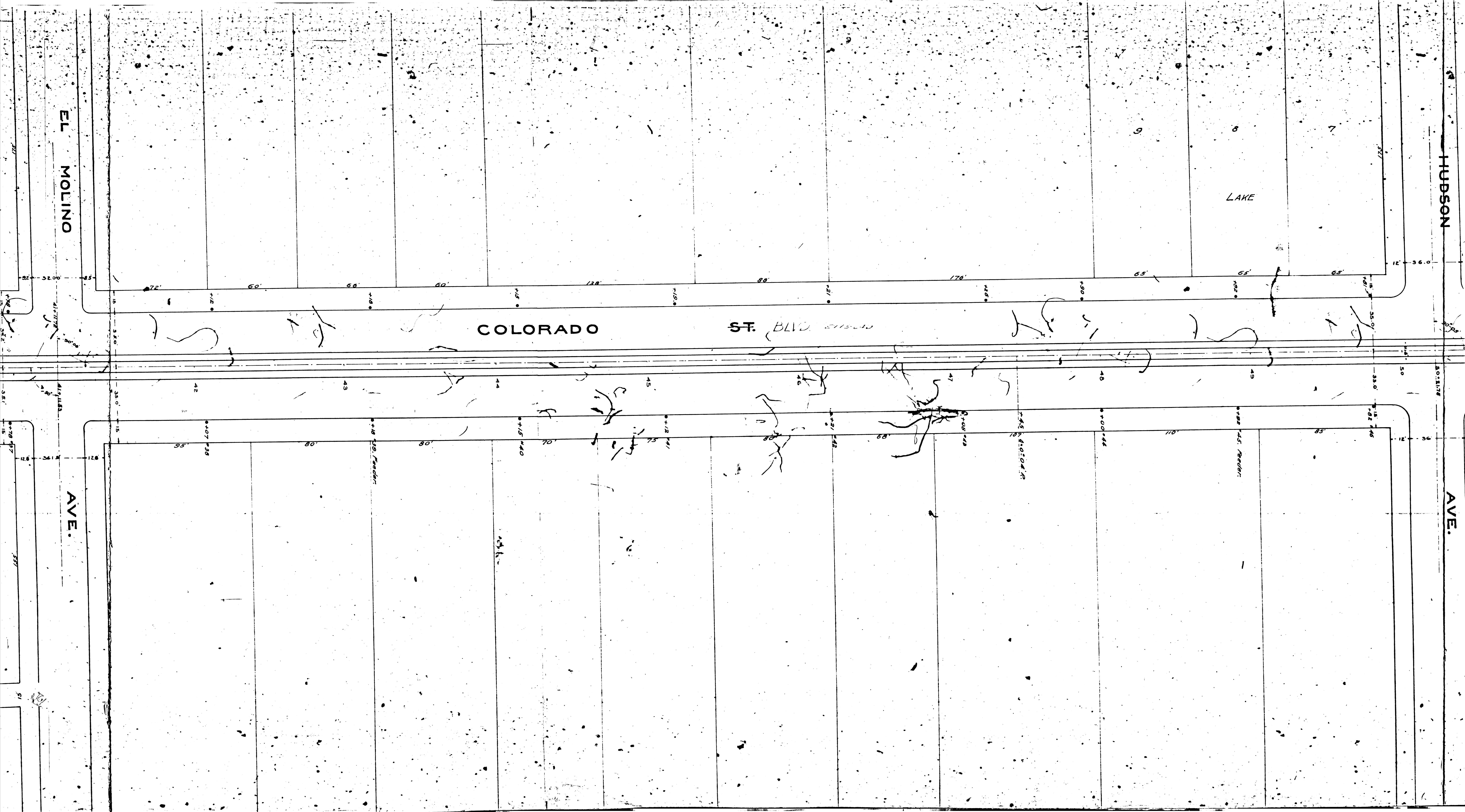
COLORADO ST. BLVD. 210110

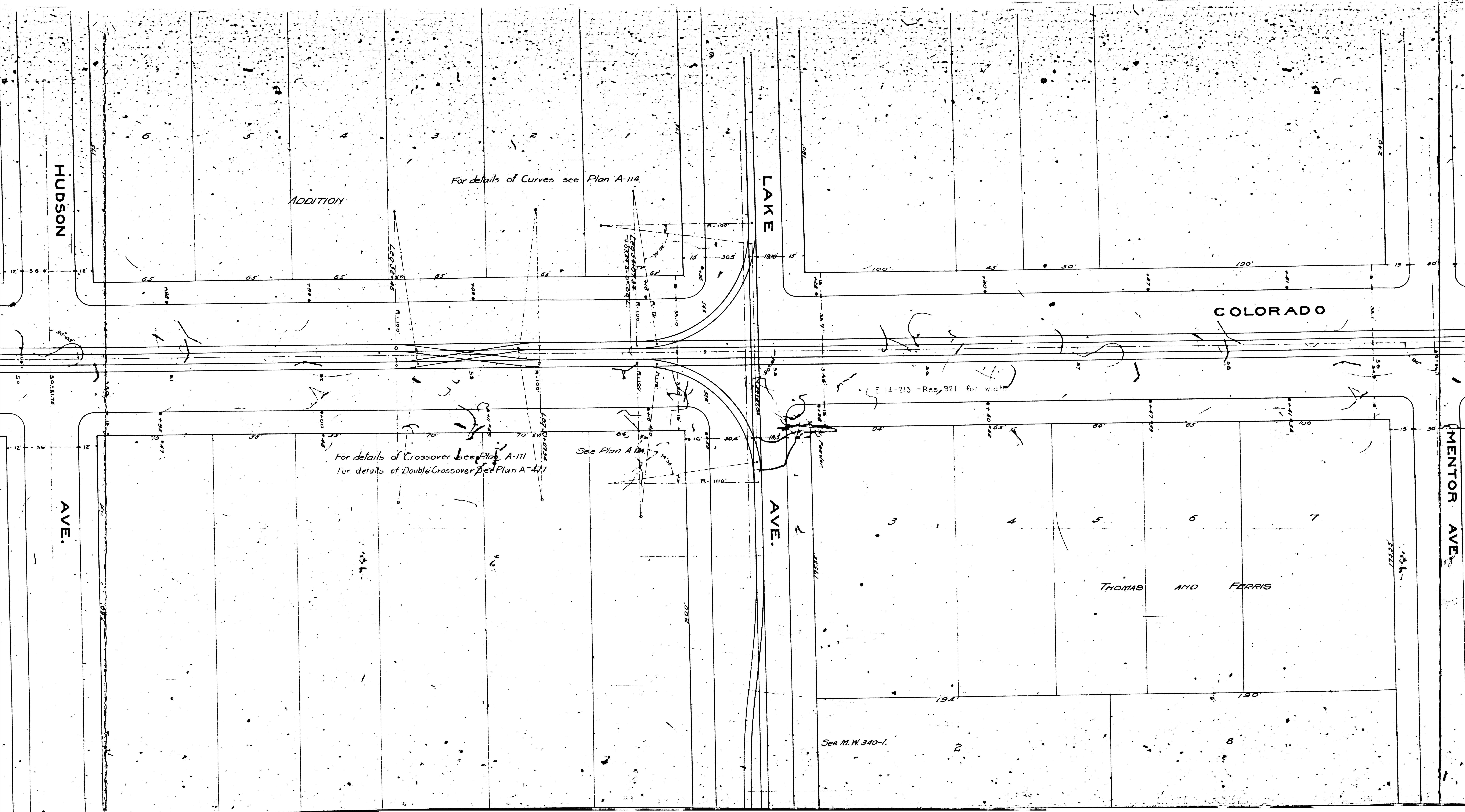
AVE.

AVE.

F/M 117892

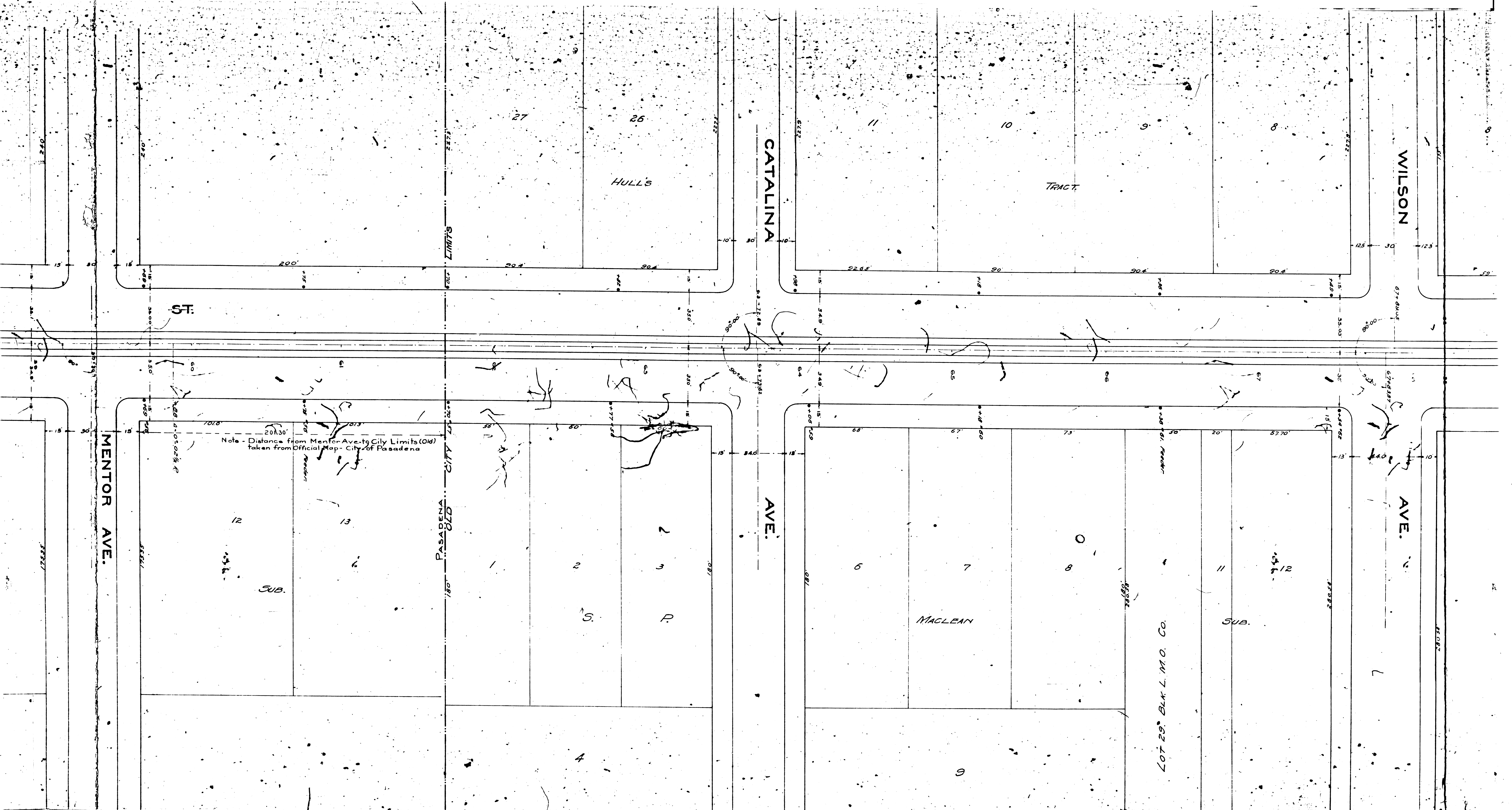
A 6 OF A 11





FM 117892

A 7 OF A 11



ST.

MENTOR AVE.

PASADENA CITY LIMITS

CATALINA AVE.

WILSON AVE.

Note - Distance from Mentor Ave. to City Limits (Old) taken from Official Map - City of Pasadena

12

13

SUB.

4

2

3

S

P

6

7

8

9

MACLEAN

LOT 29th BLK L. M. O. CO.

SUB.

11

12

27

26

HULLS

11

10

9

8

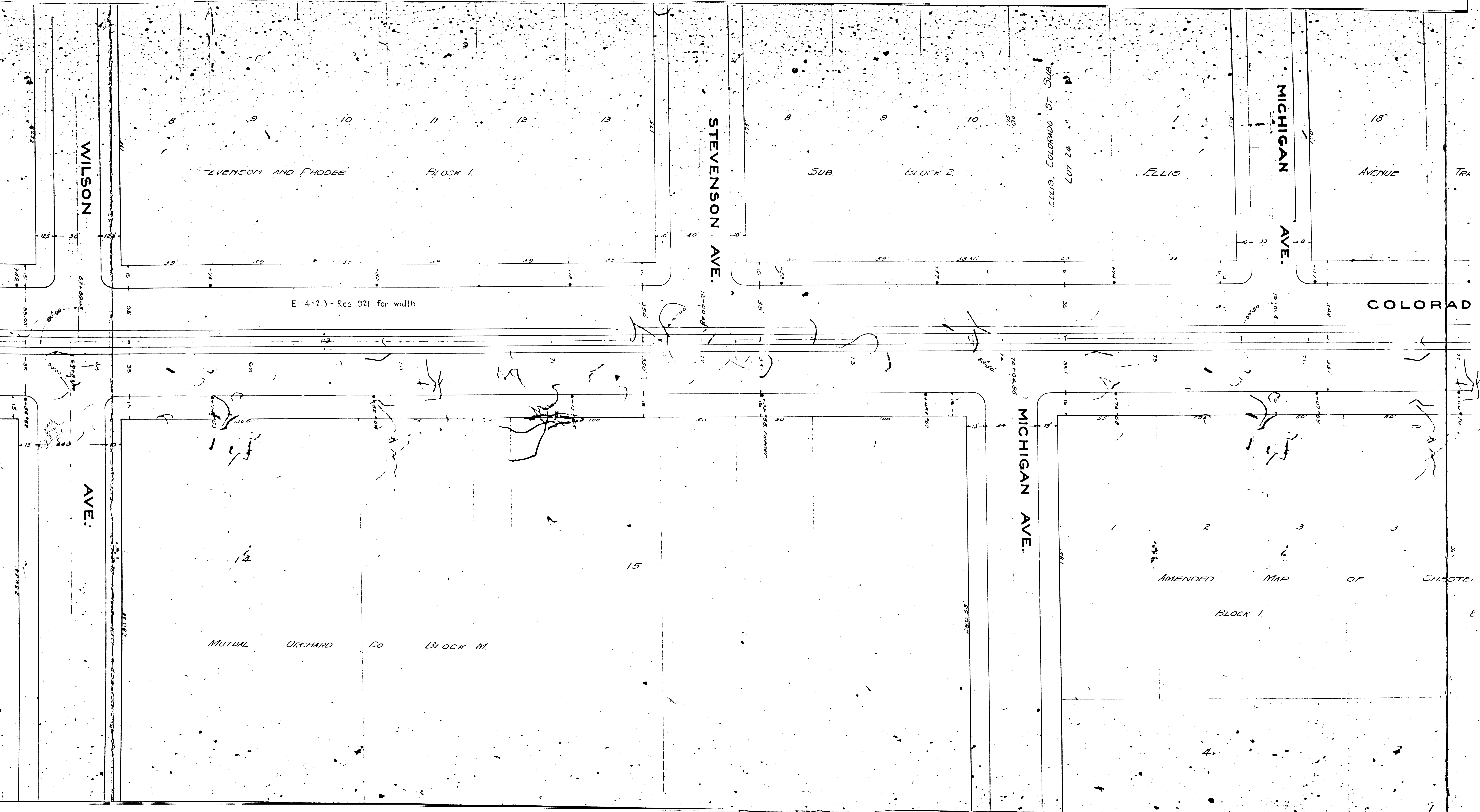
TRACT

CATALINA

WILSON

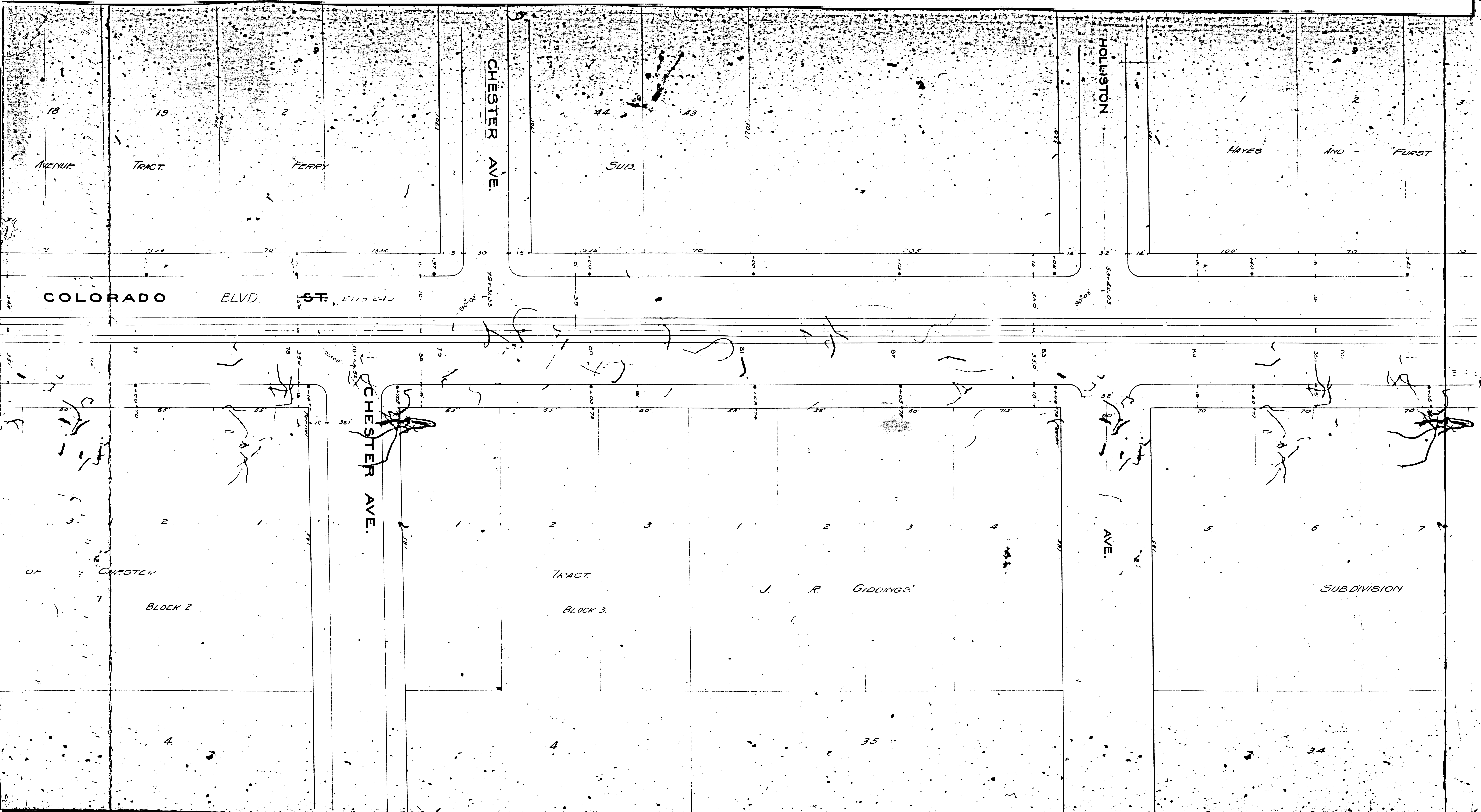
FM 178.02

A 8 OF A 11



F M 17892

△ ○ ⊙ △ ||



COLORADO BLVD. ST.

CHESTER AVE.

HOLLISTON AVE.

CHESTER AVE.

AVE.

BLOCK 2

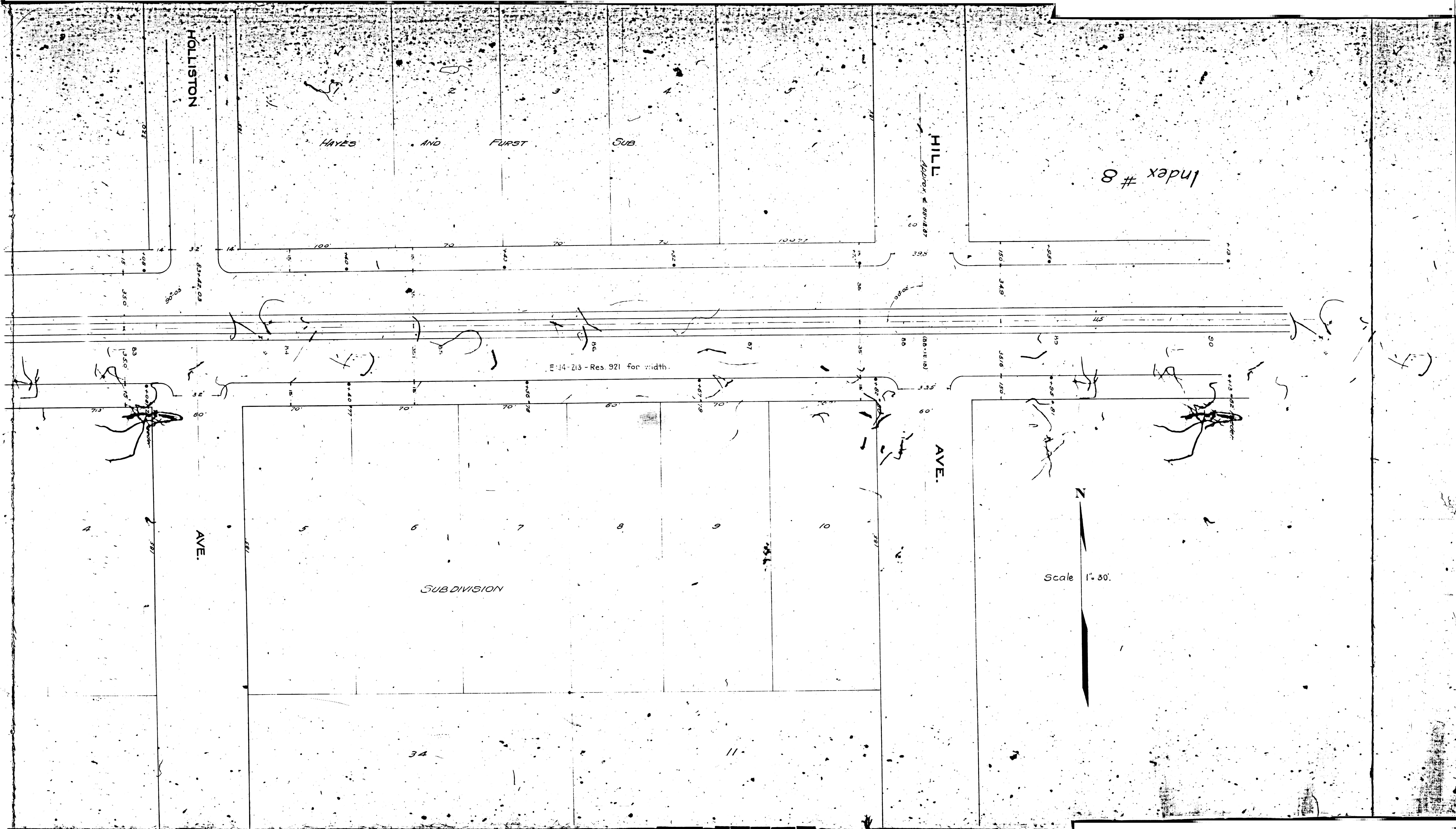
BLOCK 3

J. R. GIDDINGS

SUBDIVISION

FM 178 92

A 10 OF A 11



FM 17892

ATT OF ATT