

Declared a public highway 60ft. wide, 30ft. on each side of a line which is parallel with and 30ft. northeasterly, measured at right angles, from the LA MIRADA ROAD

A.T. & S.F. R.R. TO SAN DIEGO

F.M.	17936
A1	OF A9

100

line of Sprout St. except on the curves. Declared a public highway 60 feet wide, 30 feet on each side of center line shown, on C.S. 7607 from Anaheim Telegraph Road

Declared a public highway 40 feet wide R.B. 14-181-182 D:19-9

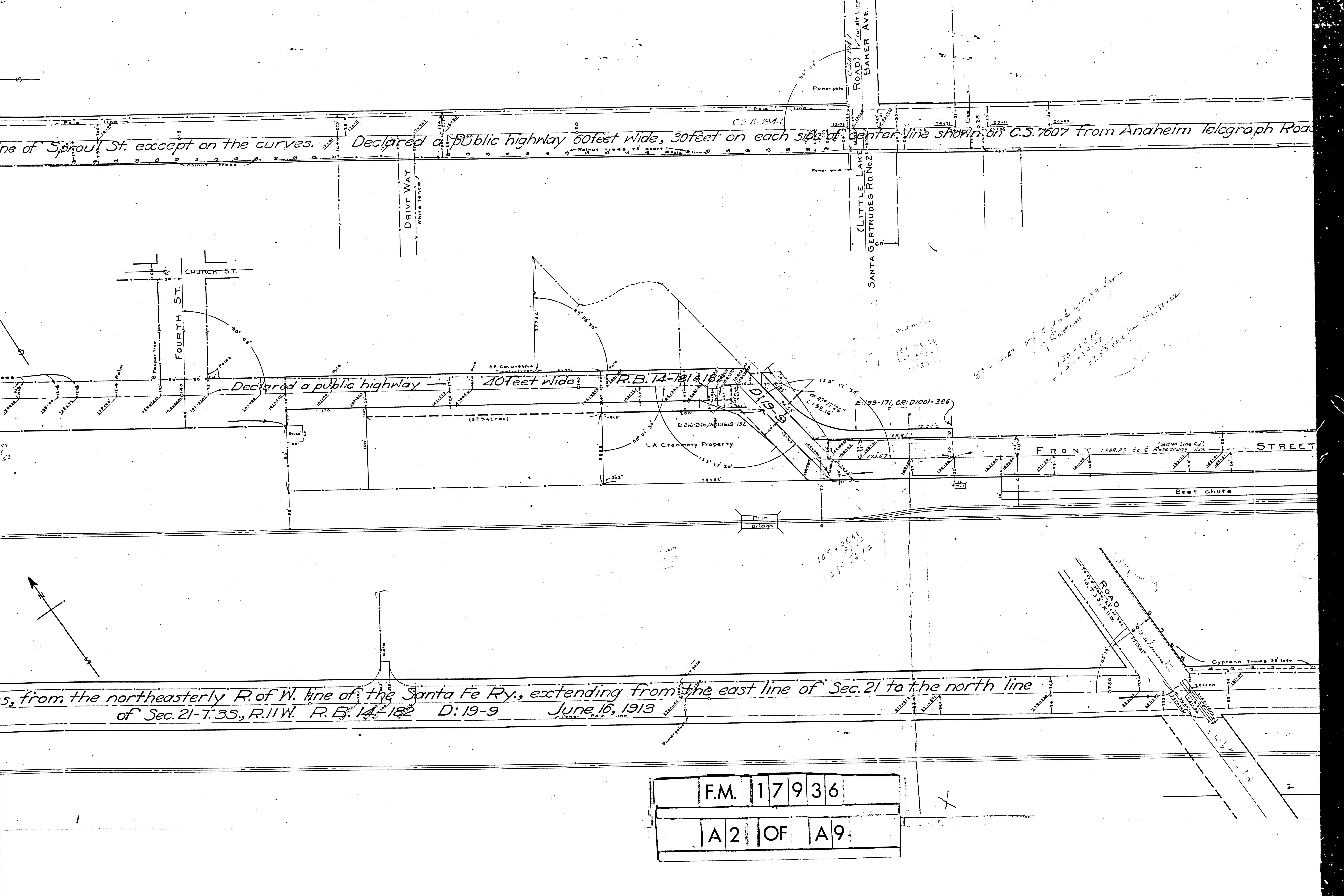
s, from the northeasterly R. of W. line of the Santa Fe Ry., extending from the east line of Sec. 21 to the north line of Sec. 21-7.35, R. 11 W. R.B. 14-182 D:19-9 June 16, 1913

F.M. 17936

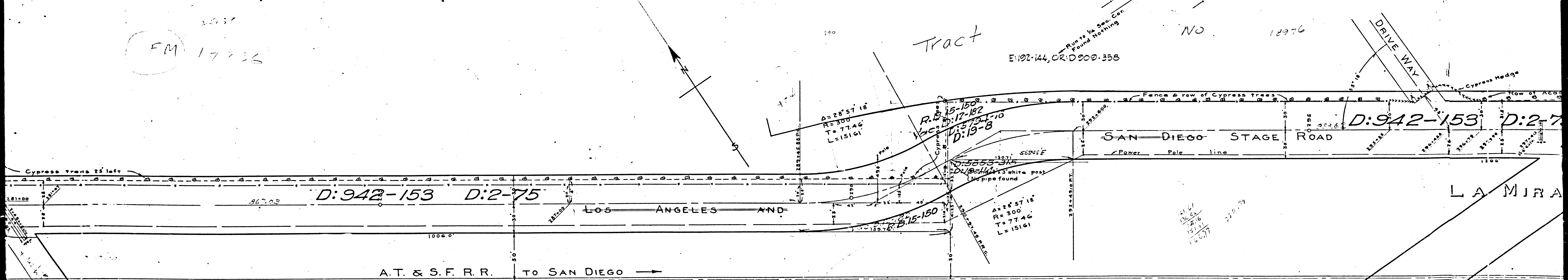
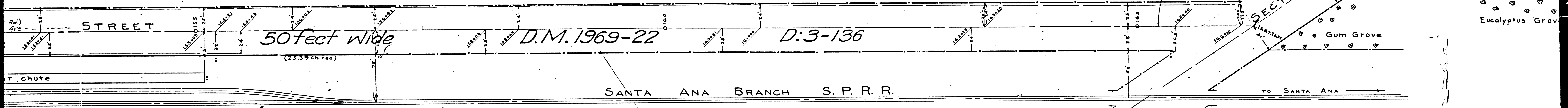
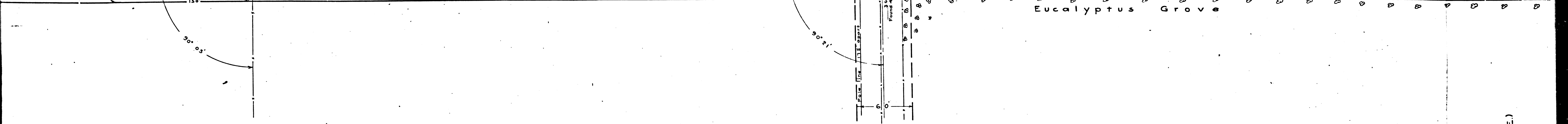
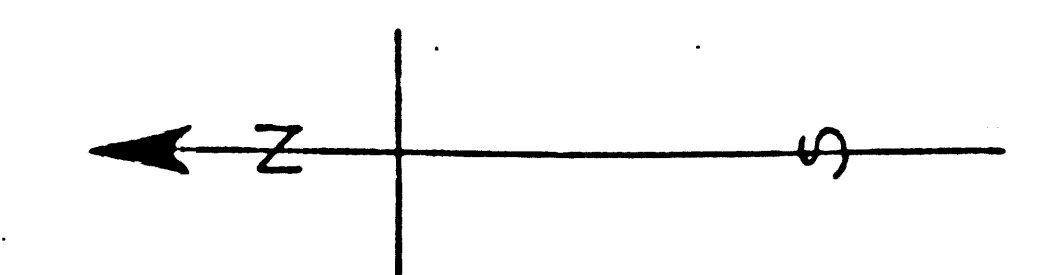
A2 OF A9

150 = 12.47
150 + 68.00 = 218.47
218.47 = 17.57 feet from Sd. 157 + 61

1484 + 2808 = 4292
4292 - 2134 = 2158
2158 - 5612 = -3454



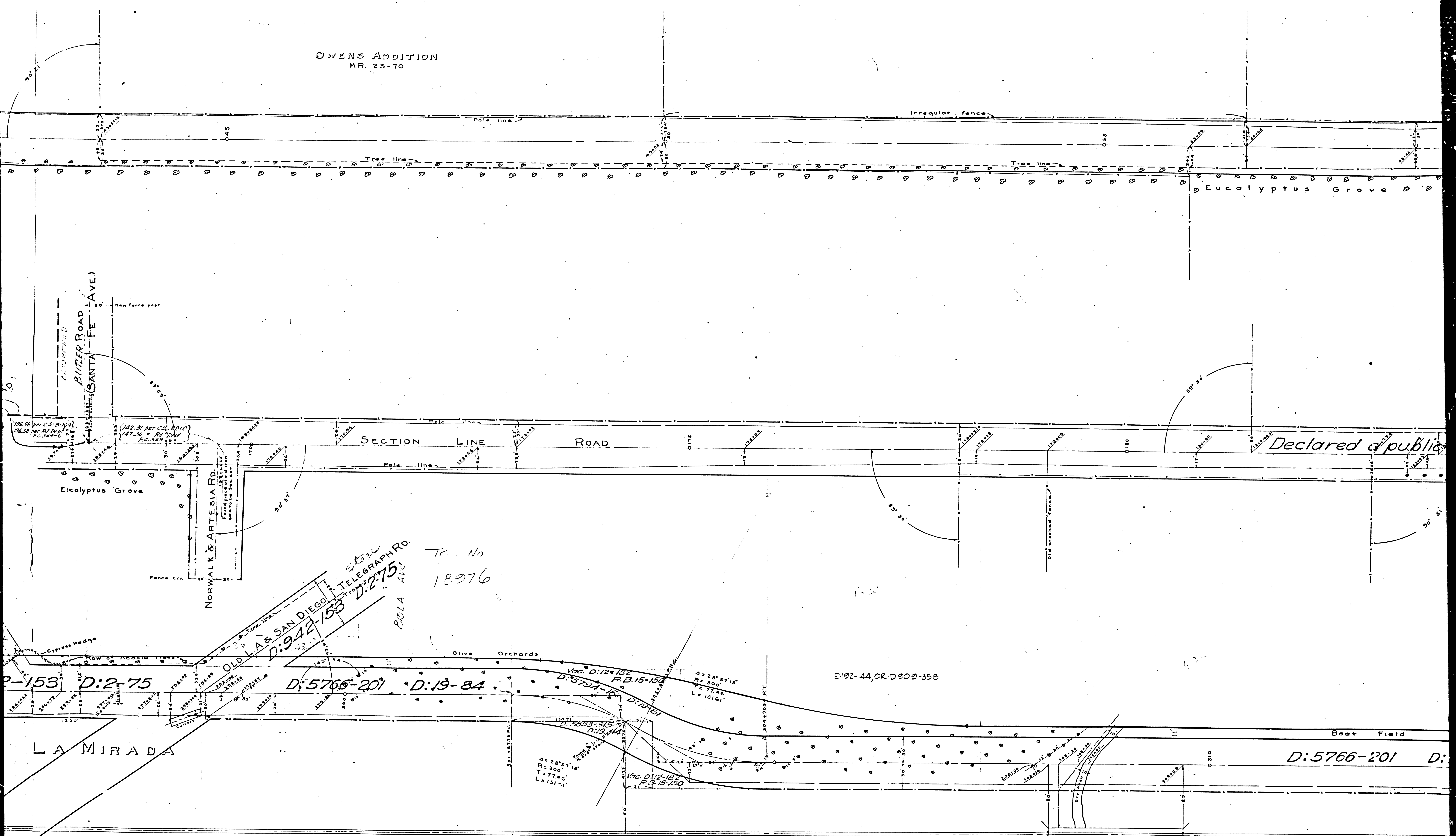
NORWALK & PUENTE MILLS ROAD
 on Telegraph Road to Spruce St. June 16, 1913, per R.B. 14 page 181-D:19-8



FM 17936

F.M.	1	7	9	3	6
A	3	OF	A	9	

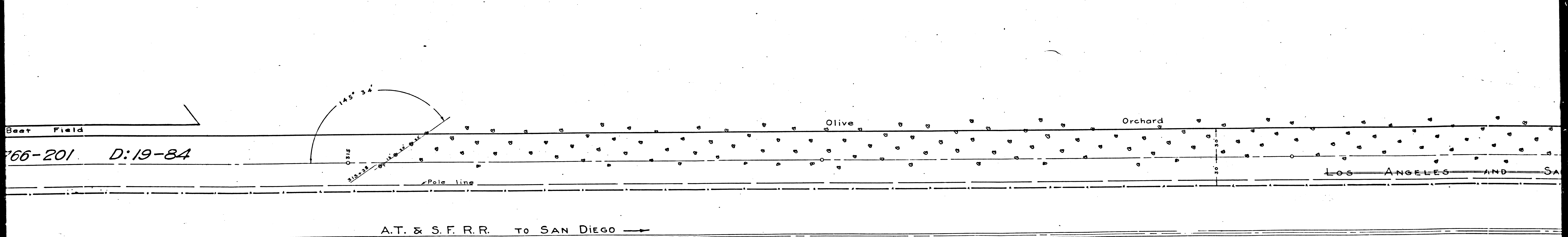
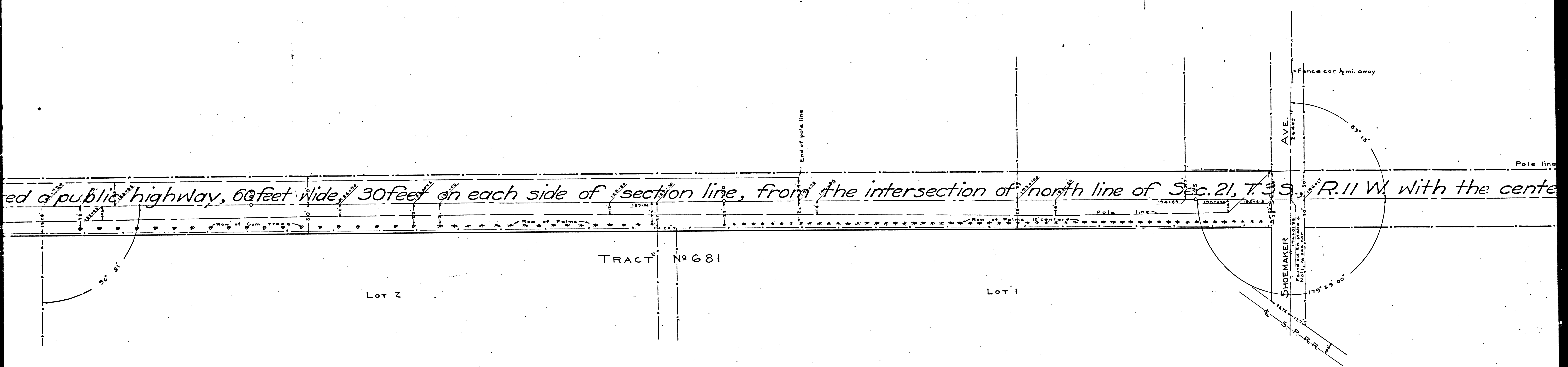
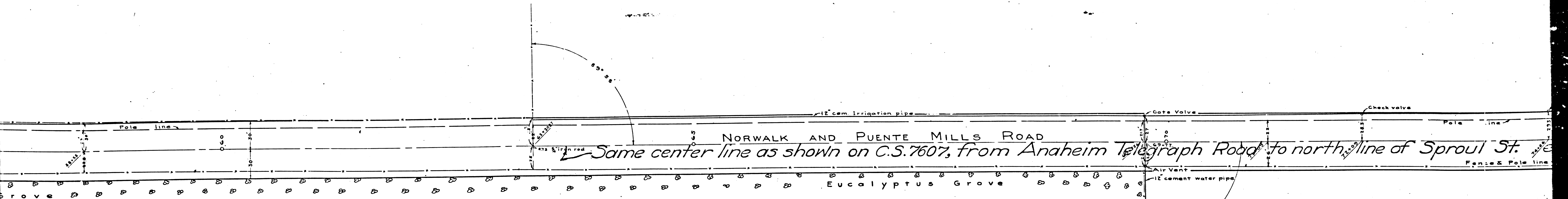
OWENS ADDITION
M.R. 23-70



Tr. No
18976

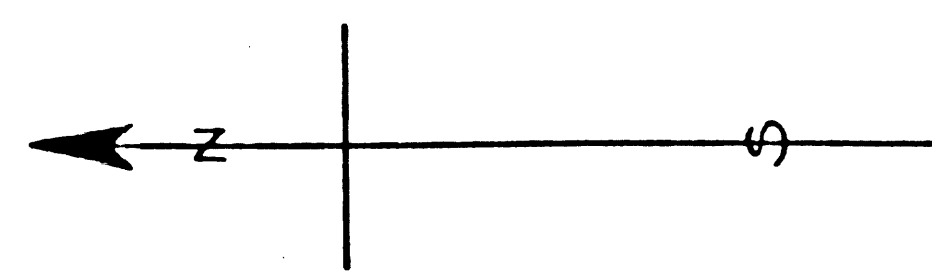
LA & SAN DIEGO TELEGRAPH RD.
D: 942-153
D: 2-75
D: 5766-201
D: 19-84
E: 192-144, OR: D: 909-356
R.B. 15-150
D: 19-151
D: 19-142
D: 19-141
D: 19-140
D: 19-139
D: 19-138
D: 19-137
D: 19-136
D: 19-135
D: 19-134
D: 19-133
D: 19-132
D: 19-131
D: 19-130
D: 19-129
D: 19-128
D: 19-127
D: 19-126
D: 19-125
D: 19-124
D: 19-123
D: 19-122
D: 19-121
D: 19-120
D: 19-119
D: 19-118
D: 19-117
D: 19-116
D: 19-115
D: 19-114
D: 19-113
D: 19-112
D: 19-111
D: 19-110
D: 19-109
D: 19-108
D: 19-107
D: 19-106
D: 19-105
D: 19-104
D: 19-103
D: 19-102
D: 19-101
D: 19-100
D: 19-99
D: 19-98
D: 19-97
D: 19-96
D: 19-95
D: 19-94
D: 19-93
D: 19-92
D: 19-91
D: 19-90
D: 19-89
D: 19-88
D: 19-87
D: 19-86
D: 19-85
D: 19-84
D: 19-83
D: 19-82
D: 19-81
D: 19-80
D: 19-79
D: 19-78
D: 19-77
D: 19-76
D: 19-75
D: 19-74
D: 19-73
D: 19-72
D: 19-71
D: 19-70
D: 19-69
D: 19-68
D: 19-67
D: 19-66
D: 19-65
D: 19-64
D: 19-63
D: 19-62
D: 19-61
D: 19-60
D: 19-59
D: 19-58
D: 19-57
D: 19-56
D: 19-55
D: 19-54
D: 19-53
D: 19-52
D: 19-51
D: 19-50
D: 19-49
D: 19-48
D: 19-47
D: 19-46
D: 19-45
D: 19-44
D: 19-43
D: 19-42
D: 19-41
D: 19-40
D: 19-39
D: 19-38
D: 19-37
D: 19-36
D: 19-35
D: 19-34
D: 19-33
D: 19-32
D: 19-31
D: 19-30
D: 19-29
D: 19-28
D: 19-27
D: 19-26
D: 19-25
D: 19-24
D: 19-23
D: 19-22
D: 19-21
D: 19-20
D: 19-19
D: 19-18
D: 19-17
D: 19-16
D: 19-15
D: 19-14
D: 19-13
D: 19-12
D: 19-11
D: 19-10
D: 19-9
D: 19-8
D: 19-7
D: 19-6
D: 19-5
D: 19-4
D: 19-3
D: 19-2
D: 19-1

F.M.	1	7	9	3	6
A	4	OF	A	9	

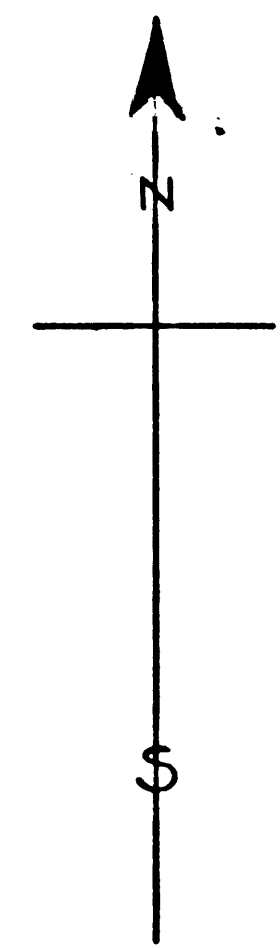


F.M.	1	7	9	3	6
A	5	OF	A	9	

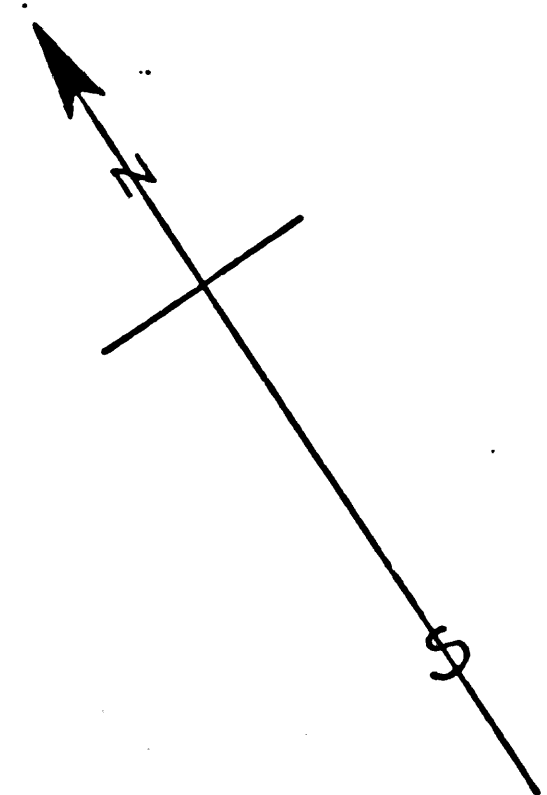
10



Sproul St. *except on the curves. Declared a public highway, 60 feet wide, 30 feet on each side of center line shown on C.S. 7607 from Anaheim Telegraph Road*
 Pole line
 Check valve
 12" cem Irrigation pipe
 Pole line
 Fence & Pole line
 Row of stumps 27 to 33' apart
 Gum trees
 50' Olive stump
 NORWALK
 Anaheim Telegraph Road



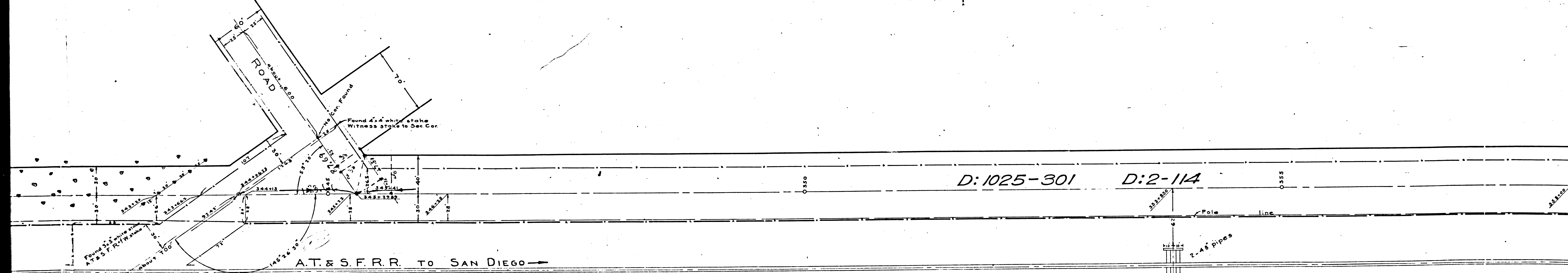
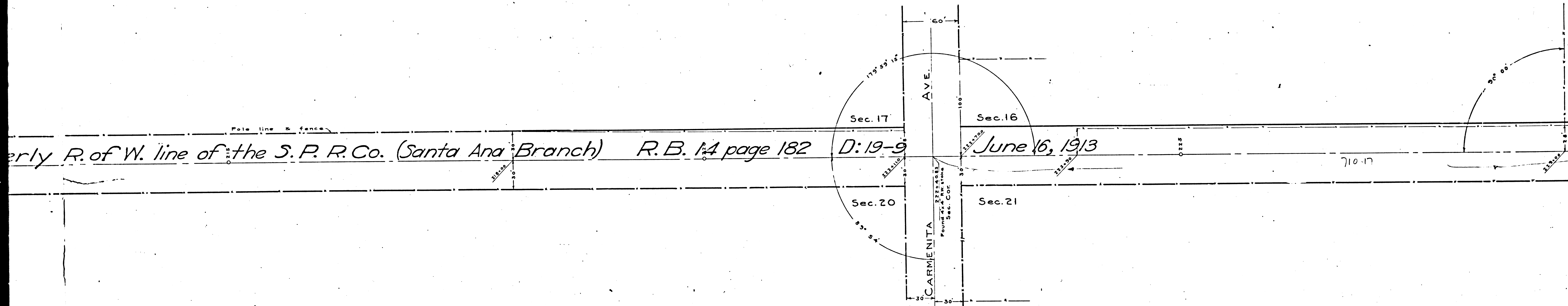
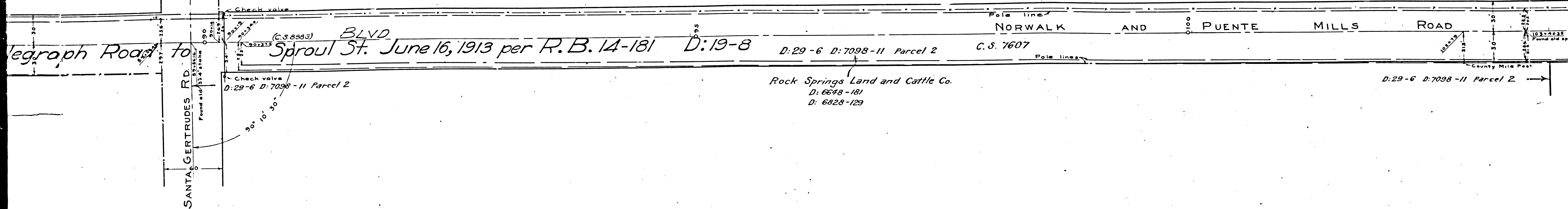
Pole line and fence
 the center line of La Mirada Road, ROAD Westerly to the intersection of the north line of Sect. 19 T. 3 S., R. 1 W. with the northeasterly R. of V



Olive
 Orchard
 D: 5766-201 D: 19-84
 SAN DIEGO STAGE ROAD
 Pole line

F.M. 17936
 A 6 OF A 9

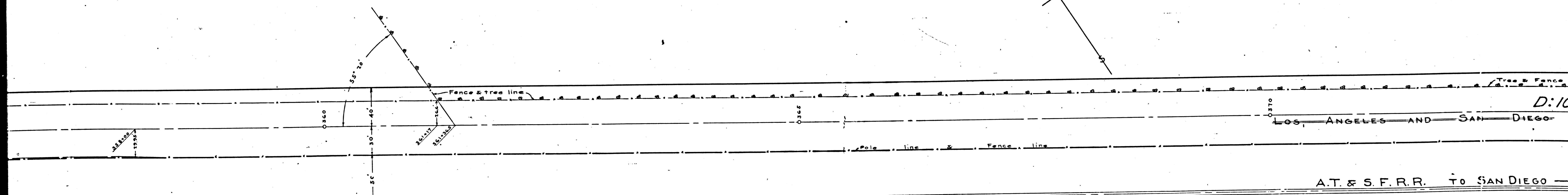
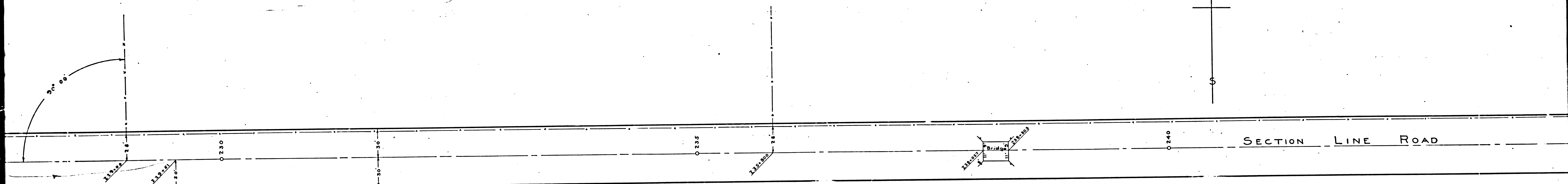
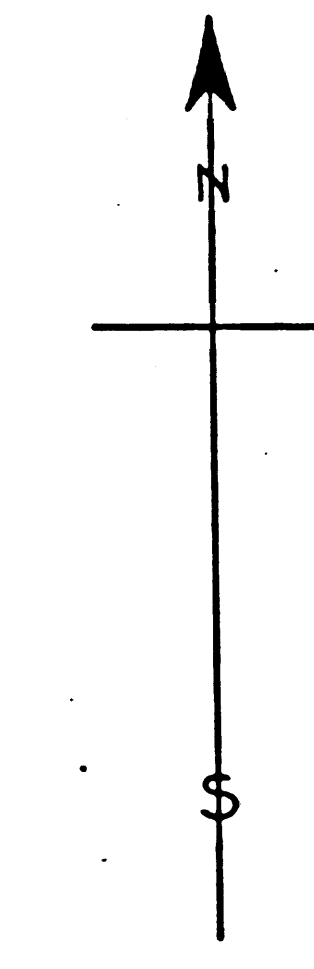
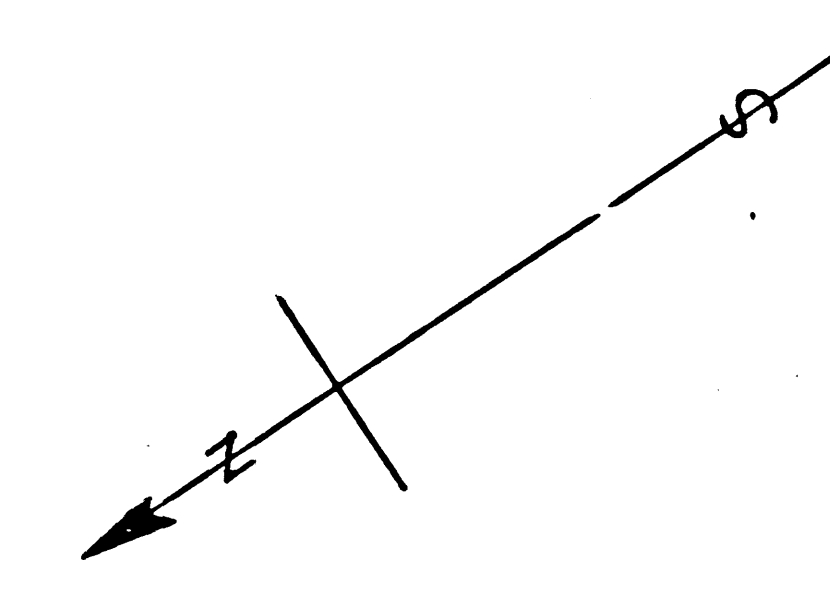
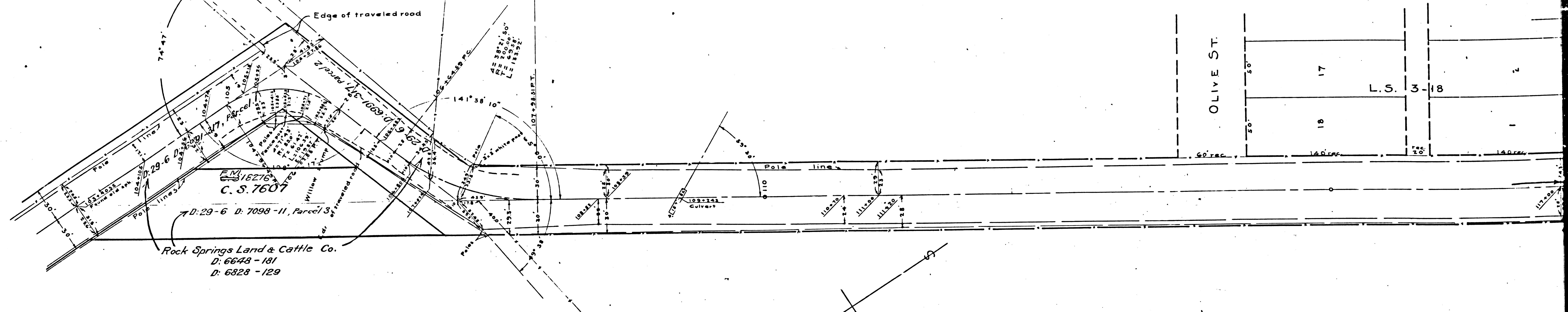
Found 2.7



F.M.	17	9	36
A7	OF	A9	

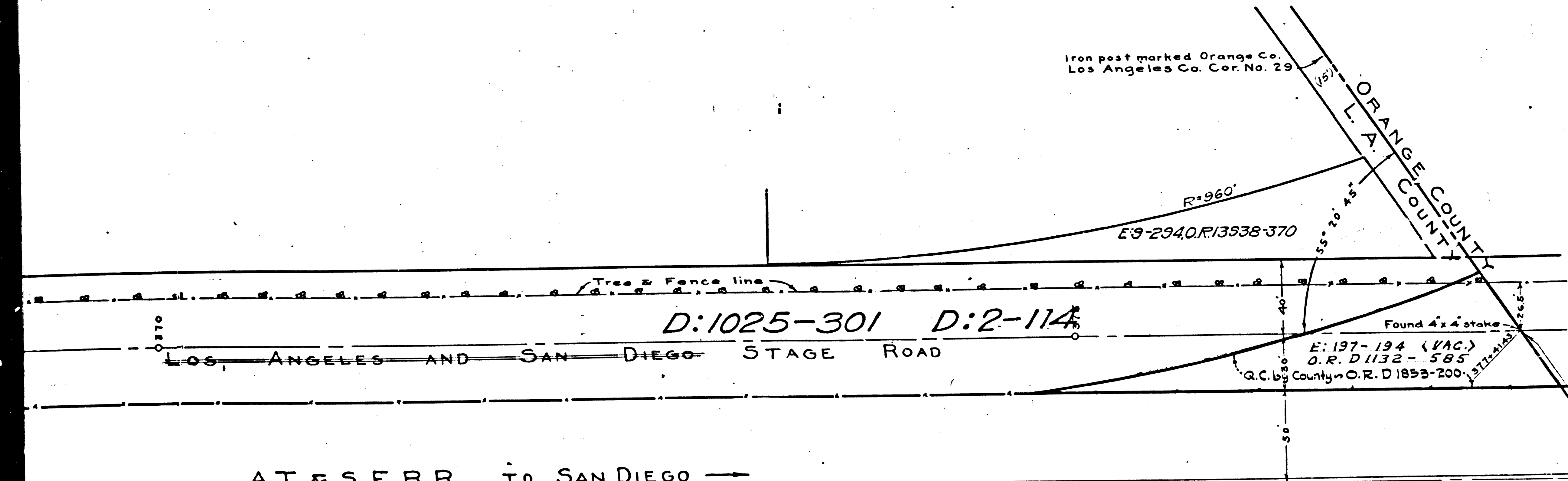
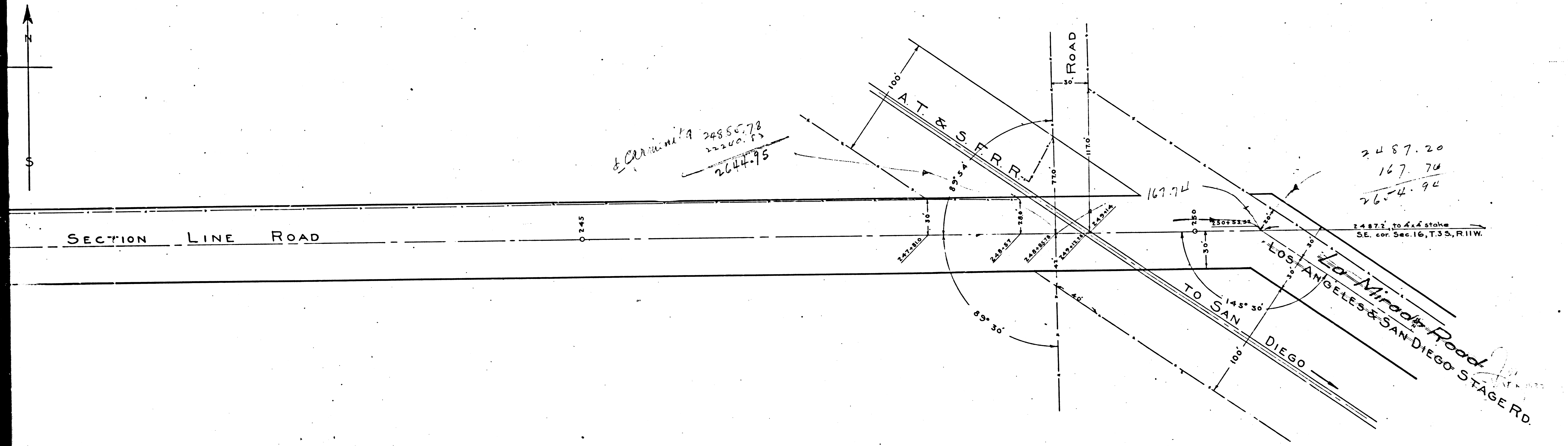
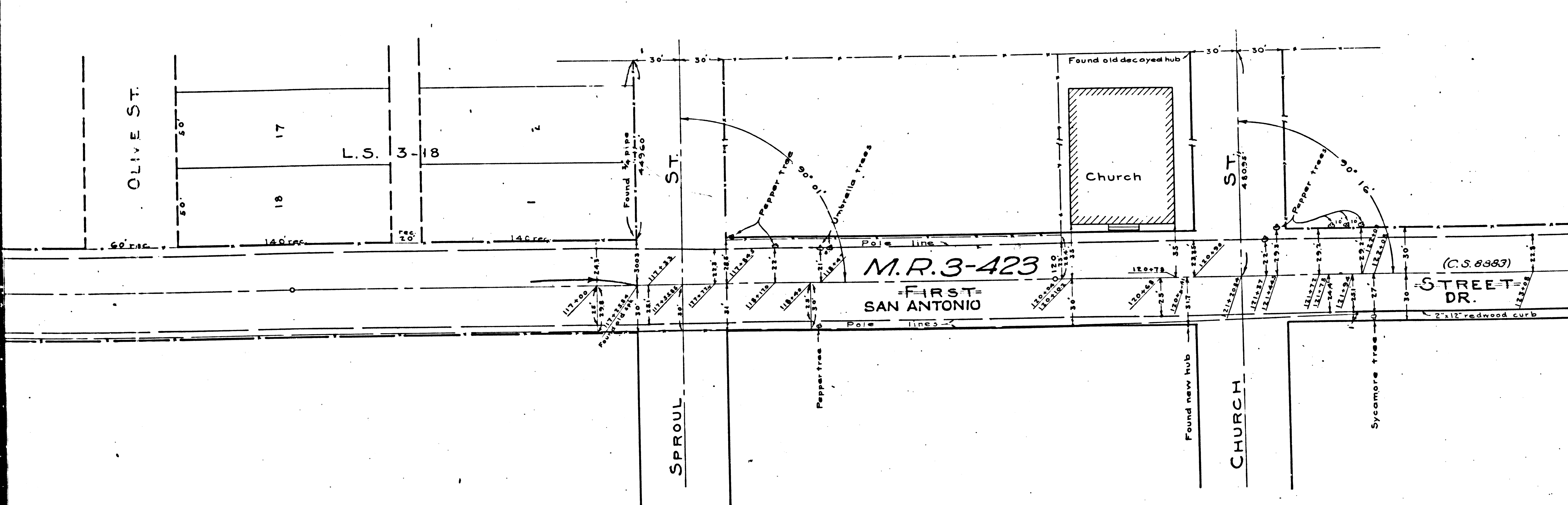


193148
Found at
Mile Post
2



A.T. & S.F.R.R. TO SAN DIEGO

F.M.	1	7	9	3	6
A	8	OF	A	9	



ROAD DISTRICT IMPROVEMENT No. 67

MAP SHOWING LOCATION OF WORK TO BE DONE ON
 NORWALK AND PUENTE MILLS ROAD, FIRST STREET, FRONT STREET,
 SECTION LINE ROAD, AND LOS ANGELES AND SAN DIEGO STAGE ROAD.

SCALE 1"=50'

JULY 1914

APPROVED *[Signature]*
 ENGINEER

DRAWN BY A.R.A.
 TRACED BY A.R.A.

PORTION TINTED GREEN TO BE GRADED AND PAVED WITH OILED MACADAM.

Carmenita Ave. changed to Carmenita Road D:13-90
Section Line Rd. " Rosecrans Ave. D:49-105
Norwalk & Puente Mills Rd. " Norwalk Blvd. D:49-105

I.M. 33
 I.M. 34

A-438

F.M.	1	7	9	3	6
A	9	OF	A	9	